

TYPE MV1.2



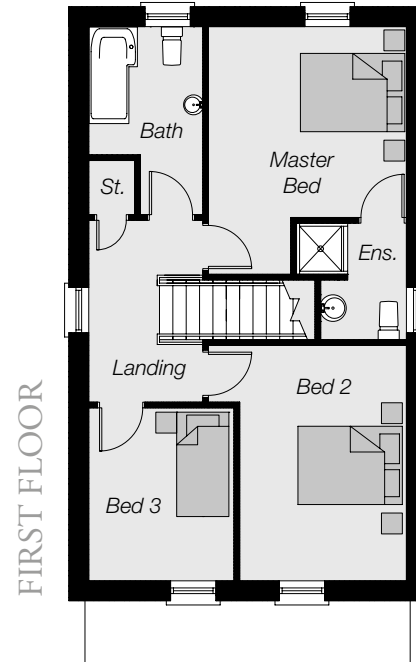
*Computer visual.*



**MILLMOUNT  
VILLAGE**

*Comber Road, Dundonald*

Sites: 297B, 311B, 311C, 343B and 343C



**TOTAL FLOOR AREA**

1,295 sq. ft. approx.



Telephone 028 9059 5555  
www.simonbrien.com



Telephone 028 9065 5555  
www.reedsrains.co.uk



**GROUND FLOOR**

Entrance Hall with separate wc	
Lounge	13'4" x 13'10"
Kitchen / Dining	17'10" x 13'10"
Sunroom	10'5" x 10'4"

**FIRST FLOOR**

Master Bedroom (max)	14'1" x 11'2"
Ensuite	
Bedroom 2	13'4" x 9'5"
Bedroom 3	9'9" x 8'2"
Bathroom	

These particulars do not constitute any part of an offer or contract. None of the statements contained in these particulars are to be relied on as statements or representations of fact and intending purchasers must satisfy themselves by inspection or otherwise as to the correctness of each of the statements contained in these particulars. All measurements of area are quoted as Net Sales Area which is calculated in accordance with the RICS Code of Measuring Practice (6th Edition) APP 21. Configurations of kitchens, bathrooms and wardrobes may be subject to alteration from those illustrated without prior notification. Purchasers should satisfy themselves as to the current specification at the time of booking. The Vendor does not make or give, and neither the Selling Agent, nor any person in their employment, has any authority to make or give any representation or warranty whatever in relation to any property. Computer visuals are for illustration only. Plans are not to scale and all dimensions shown are approximate.

**LaganHomes**  
www.laganhomes.com