

TYPE SR15.2



*Computer visual.*

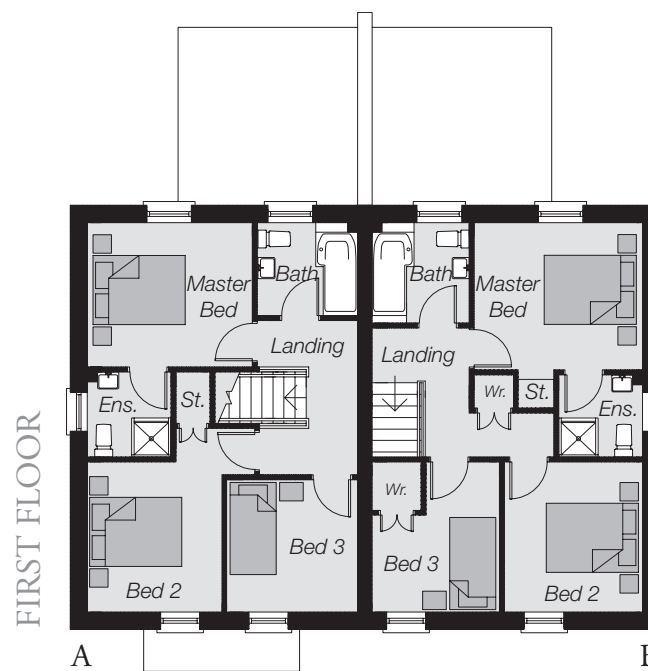
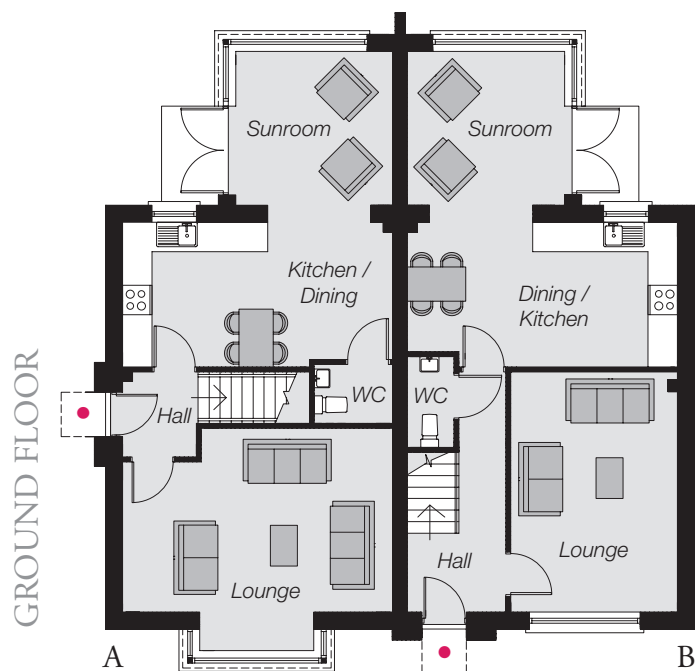
*Finish floor levels may vary*



MILLMOUNT  
VILLAGE

*Comber Road, Dundonald*





Type A: Site 499 - Type B: Site 500

#### GROUND FLOOR (A)

Entrance Hall with separate wc  
Lounge 17'10" x 12'1" (max)  
Kitchen / Dining 17'10" x 9'5"  
Sunroom 10'4" x 10'1"

#### FIRST FLOOR (A)

Master Bedroom 10'10" x 9'5"  
Ensuite  
Bedroom 2 9'10" x 8'9"  
Bedroom 3 8'8" x 8'6"  
Bathroom

#### GROUND FLOOR (B)

Entrance Hall with separate wc  
Lounge 15'10" x 10'11"  
Kitchen / Dining 17'10" x 9'5"  
Sunroom 10'4" x 10'1"

#### FIRST FLOOR (B)

Master Bedroom 11'0" x 9'8"  
Ensuite  
Bedroom 2 9'10" x 9'0"  
Bedroom 3 9'10" x 8'4" (max)  
Bathroom

These particulars do not constitute any part of an offer or contract. None of the statements contained in these particulars are to be relied on as statements or representations of fact and intending purchasers must satisfy themselves by inspection or otherwise as to the correctness of each of the statements contained in these particulars. All measurements of area are quoted as Net Sales Area which is calculated in accordance with the RICS Code of Measuring Practice (6th Edition) APP 21. Configurations of kitchens, bathrooms and wardrobes may be subject to alteration from those illustrated without prior notification. Purchasers should satisfy themselves as to the current specification at the time of booking. The Vendor does not make or give, and neither the Selling Agent, nor any person in their employment, has any authority to make or give any representation or warranty whatever in relation to any property. Computer visuals are for illustration only. Plans are not to scale and all dimensions shown are approximate.

#### TOTAL FLOOR AREAS

**A:** *With Sunroom* 1,050 sq. ft. approx.  
*Without Sunroom* 940 sq. ft. approx.  
**B:** *With Sunroom* 1,030 sq. ft. approx.  
*Without Sunroom* 920 sq. ft. approx.



Telephone 028 9059 5555  
[www.simonbrien.com](http://www.simonbrien.com)



Telephone 028 9065 5555  
[www.reedsrains.co.uk](http://www.reedsrains.co.uk)



**LaganHomes**  
[www.laganhomes.com](http://www.laganhomes.com)