



# Annual Review 2023

## Our Transition and Growth





# Contents

<b>4</b>	From the Chair
<b>6</b>	From our Chief Executive
<b>8</b>	Our Year in Highlights
<b>10</b>	Building on our Legacy
<b>14</b>	Our Transition and Growth
<b>24</b>	Our Educational Impact
<b>32</b>	Thank you
<b>36</b>	Financial Summary
<b>37</b>	Meet the LEAF Team





## From the Chair



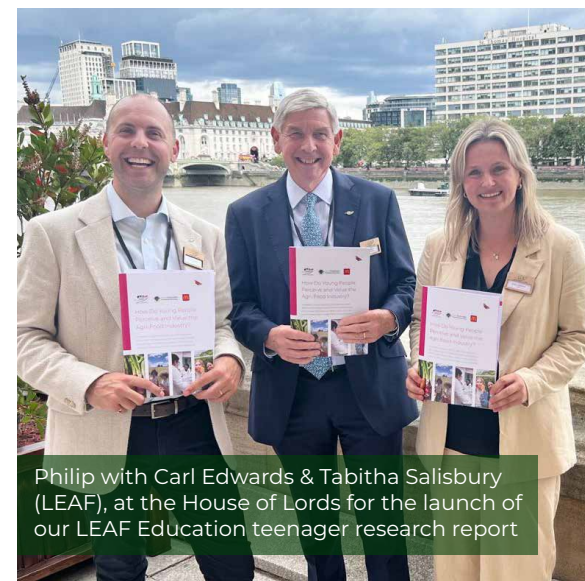
Philip Wynn

Another year has flown by and I am delighted to say LEAF is in great shape. We recently welcomed our new Chief Executive, David Webster, to lead LEAF through the next stage of our development and meet our strong ambitions for the future. David's experience will be invaluable as we expand our membership, continue the development of our assurance standards and support farmers, both here in the UK and globally, in their journey to produce food more sustainably.

We continue to invest in people and resources that will underpin our future success. Our strong legacy has provided LEAF with an unprecedented level of trust within both agriculture and food, but connecting farmers with solutions around carbon, water management and biodiversity will be an increasingly important priority. There is no 'rule book' for this new world of production, but the development of Integrated Farm Management to find practical solutions is at the heart of everything we do.



Philip attends the Farm to Fork Summit at 10 Downing Street



Philip with Carl Edwards & Tabitha Salisbury (LEAF), at the House of Lords for the launch of our LEAF Education teenager research report

The impacts of weather events around the globe over the last year have never been greater. In fact, the weather has become the most significant risk to all food producers, and adapting our approach will be fundamental to our future success. Alongside this, the importance of producing more with less is a strategy we all need to adopt.

Educating the next generation about the challenges and opportunities around farming, food and the environment is vital, and our team's achievements and progress over the last year has been exceptional. Our overall reach from resources, programmes, and projects was in excess of 700,000 young people.

This review showcases some of our many achievements and I hope it enables you to see the diversity, skills and leadership we are so fortunate to have at LEAF. We receive such generous support from so many; without this so much of what our charity does would not be possible. An enormous thank you from both the Trustees and staff, and we all look forward to building even stronger relationships with you in the year ahead.



# From our Chief Executive

Having worked closely with Caroline to establish the Jordans Farm Partnership in 2012, I was aware of the broad scope of the LEAF Marque standard and had attended numerous LEAF parliamentary briefings and Open Farm Sunday events.

However, in the three months since I first joined the organisation, I have been utterly amazed at the extent of the activity that LEAF undertakes and the depth of knowledge and expertise it can harness right across the global food supply chain.

I have met some of the most progressive farmers in the UK – using data and management systems to improve the resilience of their farms in harmony with nature; I have spoken to leaders in the agriculture, retail and financial services sectors who all recognise the urgent need to promote sustainable agricultural practices at scale and pace; and I have spoken to teachers and educators with the insight, care and expertise to engage young minds on the true value of farming to the health of our planet.

LEAF is an incredible organisation that makes an enormous impact that is far greater than the sum of its parts. As our society faces the harsh reality of increasingly unpredictable weather patterns, threats to food security, as well as challenges to the economic security of farming businesses, never has our work been more important.



**David Webster**  
Chief Executive



David with Clare Mike, LEAF Director, Technical & Business Development at Groundswell



David on a farm visit to Jake Freestone, LEAF Demonstration Farmer



# Our year in highlights



## JANUARY

Five pioneering farms across the UK and overseas begin their journey to net zero as part of our new ground-breaking project supported by the Co-op Foundation.

## FEBRUARY

Our annual conference brings together some of the smartest minds in the industry to discuss the way forward for more sustainable global farming systems.

## MARCH

We welcome Varfell Farms, the world's leading grower and packer of daffodil flowers and bulbs as a LEAF Demonstration Farm.

## APRIL

Asda and Aldi become the latest retailers to strengthen their environmental standards across their entire UK fresh produce supply chain through LEAF Marque, following similar commitments from Waitrose, M&S, Lidl, Tesco and Quaker Oats.

## MAY

LEAF honorary president, HRH The Duchess of Edinburgh launches Brockhill Park Performing Arts College as our first Gold Standard Demonstration School.

## JUNE

Over 250 farmers open their gates for LEAF Open Farm Sunday, welcoming over 170,000 visitors, including HRH The Duchess of Edinburgh.

## JULY

Scottish farming company 4 Front Farming Co Ltd and Cambridge University's Park Farm join the LEAF Network showcasing sustainable farming excellence.

## AUGUST

LEAF Education announces the results of its latest research of 2,500 young people carried out in partnership with McDonalds and Harper Adams School of Sustainable Food and Farming.

## SEPTEMBER

We welcome David Webster as our new CEO to help drive LEAF's next exciting chapter.

## OCTOBER

Jake Freestone, LEAF Demonstration Farmer is announced as the first winner of the Caroline Drummond Award – celebrating and communicating farming excellence.

## NOVEMBER

Members of the LEAF Network came together for a tour of Wild Ken Hill in Norfolk, taking a closer look at more regenerative and nature friendly farming practices.

## DECEMBER

We announce the launch of The LEAF Caroline Drummond Scholarship for Innovation in Sustainability to inspire future farming leaders and drive her legacy forward.





# Building on our Legacy



Enabling and inspiring farmers to farm more regeneratively through Integrated Farm Management underpins all LEAF's technical activities.

We provide farmers with access to cutting-edge insight, practical tools and best practice training to help them implement change towards more resilient farming solutions.



# Building on our Legacy

This year has been one of adjustment and growth. We continue to adapt to the loss of our former Chief Executive, Caroline Drummond MBE, who led LEAF since our inception in 1991 until her untimely death in 2022 - not only within LEAF but throughout the farming industry.

Central to Caroline's life was her love of people. She cared deeply about wanting society to feel differently about farming and food and to understand the intricacies, the contribution, and the wonder of the sector. She never gave up communicating her thoughts, pushing for change and, through initiatives like LEAF Open Farm Sunday, giving people from all walks of life the opportunity to experience farming at first hand.

Caroline's passion, purpose and pioneering spirit continues to influence, guide, and inspire all that we do. Every action and decision we make is underpinned by our determination to fulfil her commitments to deliver more sustainable food and farming systems across the globe.



## Celebrating and communicating farming excellence

Earlier this year, we were delighted to launch [The Caroline Drummond Award](#) – celebrating and communicating farming excellence, in partnership with The Institute of Agricultural Management and The British Guild of Agricultural Journalists. The award was set up to recognise individuals who personify Caroline's drive to advance more sustainable farming and communicate with peers, the wider food and the public. Jake Freestone, LEAF Demonstration Farmer, was announced as the first recipient - well-deserved recognition of his long dedication to engaging the public with farming.



Phil Ward (right), Caroline's husband, presenting Jake Freestone with the award



## Supporting innovation in sustainability

Caroline was a visionary and inspirational thinker. Her work was driven in large part by her conviction that the uptake of more sustainable global farming had to be farmer-led, practical and grounded in rigorous scientific research, data, and evidence. At the end of 2023, we announced the launch of the [LEAF Caroline Drummond Scholarship for Innovation in Sustainability](#). Awarded annually, the scholarship will support individuals and organisations to carry out pioneering research and innovative projects which advance more sustainable farming practices, that can be adopted and replicated at scale. This important scholarship programme will help ensure that Caroline's legacy lives on by supporting the next generation of thinkers, practitioners, and innovators.

Caroline left us too early, but collectively, we are determined to continue her legacy and drive forward her 'science into practice' vision.



# Our Transition and Growth



LEAF's heritage is built on innovation; we have a reputation for being a farmer-led, grass roots organisation, driving change from the ground up. These core values underpin our long-standing partnerships with our farmer and industry members, our certified growers, and the many individuals and organisations we work with through our UK and European projects.



# Our Transition and Growth

## The power of supply chains in driving sustainability

We are incredibly proud of our long standing partnerships with Waitrose, Marks and Spencers and a number of leading food brands. Building on the commitment and vision of these early pioneers, Tesco, Lidl, Aldi and Asda announced that they would also be advancing their own sustainability objectives through LEAF Marque certification, across their UK and global supply chains. Collectively, they have recognised sustainability as a strategic imperative and their role in scaling up the transition to more climate positive methods of production.

We remain focused on providing our farmer members and growers with the support, training, and resources to achieve LEAF Marque certification. We have increased staff numbers, invested heavily in the right technology and information management systems to support the needs of our growing membership base – both in the UK and globally.

Our enhanced training offer – delivered on-line and in person, provides growers with a comprehensive overview of the certification process, implementation guidelines and support for continuous improvement. We continue to build on our support for our international growers, with webinars, peer-to-peer learning opportunities and translations of our training courses and key documents.



As we look ahead to 2024, we expect to see most of our retailer partners to have rolled out LEAF Marque certification across their UK fresh produce supplier bases. Similarly, we look forward to continuing our retailer and brand collaborations particularly with Tesco, Waitrose and Marks and Spencers to support the global transition to more sustainable farming.

Change happens from the ground up, at farmer level. We are determined to provide the ongoing support, guidance, training, and tools to help them along every stage of this process.





## Advancing more sustainable farming through our industry partnerships

The journey to more sustainable farming is a shared one and our industry supported projects play a key part in driving innovation, sharing expertise and encouraging wider adoption of regenerative practices.



Archie & Bryony Graham, Lodge Farm



Nick & Lucy Tyler, Kingsplay Farming Company

### Sparkling regenerative approaches

In partnership with Corteva Agriscience, we are now a year in to our second [Resilient and Ready](#) programme – set up to develop future sustainability leaders. Siblings Bryony and Archie Graham, who run a 300 hectare arable farm in Essex alongside a busy wedding venue, and husband and wife team, Nick and Lucy Tyler of Kingsplay Farming Company Ltd, who run an 850 hectare mixed beef and arable business in north Wiltshire, are already beginning to see the benefits. They have worked alongside LEAF and Corteva Agriscience to focus on specific areas of their enterprises from nutrient and soil mapping, short term coppicing, maximizing home-grown proteins and increasing their public engagement activities.

*“So far Resilient & Ready has really solidified the need for change. We’re looking for all the advice, contacts and ideas we can get.”*  
- Bryony Graham, Resilient & Ready farmer.

Our farmers will be supported throughout their Resilient & Ready journey with one-to-one advice, mentoring, training, and resources. We look forward to seeing what they achieve in 2024!



Stone Ends Farm



Huntapac



Springfields Farm, South Africa



Woodrow Barton



LEAF Technical Officers, Pilar Pampin & Eleanor Marks (right), visit Whitriggs Farm

## Accelerating and demonstrating the journey to net zero

We are now a year into a [pioneering project](#) to support farmers on their net zero journey. It has been a year of collaboration, learning, and sharing of knowledge and experiences. Supported by the Co-op Foundation, we have been working with five incredible farms representing different farming sectors and locations in the UK and overseas. Our focus has been to understand their own unique targets and challenges in reducing carbon footprints as well as assessing the broader environmental benefits that stem from these efforts.

Every project farmer now has a carbon footprint baseline, and comprehensive net zero action plans are ready to guide them through the next two years and beyond, created with the help of their advisors. These will help form the basis for tangible and impactful changes. We ended 2023 with visits to some of our project farms to share progress, learnings, and future plans.

Looking ahead to the next phase of the project, we are committed to going even further in helping our farmers meet their net zero targets. With valuable insights, strengthened partnerships, and a deeper understanding of our farmers' unique contexts, we are excited for the challenges and triumphs that lie ahead.



## Farmer focused tools

We were delighted to launch our new [Farmers Guide to Ash Dieback](#) and suite of guidance videos early in 2023. Funded by Defra and involving a wide industry partnership with Forest Research, the University of Exeter, and FERA, we set out to understand farmers' knowledge of tree health and how best to improve it through a programme of farmer workshops.



The practical, farmer focused guide and 'how to' videos have been extremely well received by farmers and landowners, to help them make more informed decisions and take action to improve the health of trees on their land. We continue to work closely with tree health organisations and are looking at ways to extend our partnerships further into 2024.

## Developing and demonstrating sustainable farming

Our LEAF Network of Innovation Centres and LEAF Demonstration Farms continues to grow- pioneering new approaches and pushing forward the boundaries of Integrated Farm Management.

This year we saw the launch of two new LEAF Innovation Centres:

- [Hartpury University and College](#), Gloucester
- [IBERS \(Institute of Biological, Environmental and Rural Sciences\)](#) at Aberystwyth University

We were also delighted to welcome three new LEAF Demonstration Farms to the LEAF Network:

- [Varfell Farms](#), Cornwall
- [4 Front Farming Co Ltd](#), Scotland
- [Park Farm](#), University of Cambridge

## Bringing the LEAF Network together

Our first LEAF Network event of the year was held in February at LEAF Innovation Centre, [Harper Adams University](#), Shropshire. The two days consisted of exchanging ideas around the function of the LEAF Network, networking opportunities and a tour of Harper Adams University Farm as well as Bradford Estates on the Shropshire-Staffordshire border, where we dived into the role that technology plays in more sustainable farming approaches.

Our second LEAF Network event was hosted at [Wild Ken Hill](#) in Norfolk. This was a great opportunity for our new Chief Executive, David Webster to meet members of the Network and for everyone to learn about how we can work together with nature and build a more resilient future.



LEAF Network event at Wild Ken Hill, Norfolk



## Building on our technical understanding

We continue to build on our technical understanding and relate this to our activities through our UK and European projects. We have delved into the world of cover crops, earth observation technologies, global regenerative farming, tree health and more!

A standout moment this year was the AgriCaptureCO<sup>2</sup> ‘Regen in the Round’ event at LEAF Demonstration Farm, Bottom Farm in Northamptonshire. We were joined by keynote speaker Henry Dimbleby, along with Rebecca Hesketh from the Ellen MacArthur Foundation, Jane Hardy-Jones from Lancashire County Council, LEAF Demonstration Farmer, Duncan Farrington, and Joe Stanley, Head of Partnerships at the Allerton Project. The event focussed on how regenerative agriculture can be implemented to reach net zero targets, to the role of government and society in accelerating regenerative agriculture across the food system - it was evident that we all have a collective responsibility to action change.



## Beacons of Excellence

We continue to strengthen and grow our Beacons of Excellence programme to develop peer-to-peer learning and explore specific IFM practices. A number of farmer events took place during the year including a visit to Barfoots and LEAF Innovation Centre NIAB EMR. We also established the Beacons of Excellence water group, supporting farmers with practical and innovative solutions for more sustainable water management.

## LEAF out on the ground!

From the Low Carbon Agriculture Show to Groundswell and The Agroforestry Show, it has been wonderful to welcome and meet so many of our members and partners who visited the LEAF stand. We have heard many inspiring talks from our LEAF speakers, many of whom have included representatives from the LEAF Network, and we continue to share our vision for more sustainable farming and food systems across the globe. Look out for our presence at upcoming shows in 2024!







# Our Educational Impact



LEAF Education's vision is to engage, inspire and motivate young people and wider society to be conscious consumers who feel empowered to make decisions that ensures we have a world that is growing, eating and living sustainably.



# LEAF Education

## 2023 highlights:

38,032

young people worked  
with on-farm, in school  
& in the community

1,471

teachers supported  
in their CPD

733,530

young people  
benefitted from  
LEAF Education's  
work in 2023

609

farmers accessed  
accredited training &  
CPD opportunities

### How do young people perceive and value the agri-food industry?

This year the LEAF Education and Public Engagement team, in partnership with [McDonalds](#) and the [School of Sustainable Food and Farming](#), launched the findings of the Teenager Research project, which explored the often assumed disconnect and disinterest between young people and the agri-food industry.

It was incredibly rewarding to work with so many young people and we thank everyone involved with the research. Read the full report at [leaf.eco/education/research](https://leaf.eco/education/research).



HRH The Duchess of Edinburgh at our residential event at Harper Adams University as part of our Teenager research project. © Harper Adams

### Inspiring the next generation

#### National Food, Farming and the Natural Environment Competition

This year's competition once again aimed to engage secondary school students with farming, food production and the natural environment through an [immersive farm experience at Myerscough College](#). Big congratulations to the students at Heartlands Academy, who emerged as the overall winners. The weekend was a testament to the power of education and hands-on learning, showing young minds the diverse possibilities in the agri-food industry. Since the launch of the competition in 2018, **over 35%** of students who attended finalist weekend events have gone on to apply to a land based college.



Winners of the National Food, Farming and the Natural Environment Competition 2023, Heartlands Academy

#### All for Farm & Food for All

This year we launched the first [National Primary Competition](#), kindly supported by Food Educators, EIT Food and co-funded by the European Union. Regional finalists of the competition will have the opportunity to experience a day out on-farm in June 2024!





# The first LEAF Education & Public Engagement Pop up Knowledge Hub

This year saw the first of our 'Pop-up Knowledge Hub' events which sparked a lot of interest amongst farmers, educators, and wider industry - with over 100 in attendance. The day was held at Dyson Farming, Mayfield Farm and included practical workshops to see the latest developments in agri-education and access to free resources. From learning about soil health, to a holistic farming approach and exploring careers and virtual farm visits, everyone came away feeling inspired with new ideas to connect young people with farming.



Thank you to our LEAF Education patrons:



## Countryside Classroom

[Countryside Classroom](#) is our 'go to' education hub for all resources and inspiration for the classroom relating to food, farming, and the natural environment. Countryside Classroom, managed by LEAF in partnership with a range of organisations representing the very best in food, farming and environment education.

And what an impact we have had this year! We were delighted to present our achievements and progress at the House of Lords with The Lord Curry of Kirkharle Kt CB.

1.9 million impressions

270,000 views

4 new partners this year



Countryside Classroom partners meeting at the House of Lords



# LEAF Open Farm Sunday

On 11th June 2023, farmers across Britain opened their gates and welcomed over 170,900 visitors onto farms for LEAF Open Farm Sunday - farming's annual open day.

Every event was unique, with each farmer showcasing their own farming story. But all were united with a shared aim of helping to demonstrate the industry's commitment to more sustainable farming through boosting biodiversity, creating habitats for nature, effective soil and water management whilst delivering nutritious food and a well-managed countryside - today and for future generations.

## 2023 Highlights

<div>257</div> <div>farmers opened their gates</div>	<div>170,900</div> <div>people visited a farm for LOFS</div>	<div>5,500</div> <div>helpers supported events</div>	<div>87%</div> <div>of visitors said LOFS had increased their trust in British farming</div>
--	--	--	--



## A royal visit

Her Royal Highness The Duchess of Edinburgh, LEAF's Honorary President, supported LEAF Open Farm Sunday at Hampton Estate Farms' event in Surrey. During her visit The Duchess saw first-hand farming activities, learned about the history and process of hop growing, explored the role of technology and how regenerative farming promotes biodiversity. The Duchess also met some inspiring young people pursuing careers in the sector, including apprentices, a trainee vet, and the estate's butcher, as well as an aquatic biodiversity expert.



HRH The Duchess of Edinburgh visits Hampton Estate Farms on LOFS © Jon Hawkins



© Jon Hawkins

## Thank you!

A huge thank you to all the farmers who hosted such inspiring and engaging events, to all our visitors for getting involved, your hugely positive feedback continues to inspire us. And to all our helpers, supporters and Principal Sponsors - we couldn't do it without you.

AHDB	Arla	ASDA	BASF We create chemistry	Co-op	FARMERS WEEKLY	Department for Environment Food & Rural Affairs	frontier
JOHN DEERE	LEAF	M&S EST. 1884	NFU	Sainsbury's Helping everyone eat better	TESCO	WAITROSE & PARTNERS	



# Thank you

To all our members who have helped support our work during 2023,  
our work as a charity wouldn't be possible without you.

We are grateful to our wide range of corporate partners...







Our grateful thanks to the following organisations and individuals who have provided donations to LEAF and LEAF Education:

- |  |  |
|--|--|
| The A Team Foundation  | Ian Askew Charitable Trust                         |
| The Aurora Trust (formerly The Ashden Trust)                       | JA Pye Charitable Settlement                       |
| The Broyst Foundation  | The John Coates Charitable Fund                    |
| The Chacegrove Family Foundation                                   | J Reginald Corah Foundation                        |
| Chadacre Trust   | The Llys dinam Trust                               |
| The CLA Charitable Trust   | The Mary Robertson Trust                           |
| Cumbria Community Foundation and the Westmorland Family Foundation | Newby Trust  |
| The Doris Field Charitable Trust                                   | The Nineveh Trust                                  |
| East Sussex Proficiency Test Council                               | The NFU Mutual Charitable Trust                    |
| Ernest Cook Trust  | The Norfolk Association of Agricultural Valuers    |
| The Florence Turner Trust  | The Rowan Bentall Charitable Trust                 |
| The Ganton Furze Settlement  | The Tendril Trust                                  |
| The Gerald Micklem Charitable Trust                                | The William Dean Countryside and Educational Trust |
| The Hadrian Trust  | The Worshipful Company of Farmers                  |



# Financial summary

Income & expenditure for the year ended 31 March 2023

INCOME FROM:	2022	2023
Donations & legacies	£137,822	£146,707
Charitable activities	£1,720,559	£1,750,816
Other trading activities	£137,651	£175,009
Investment income	£70	£23
Other income	£25,515	-
TOTAL INCOME	£2,021,617	£2,072,555
EXPENDITURE ON:		
Raising funds	£102,548	£56,182
Charitable activities	£1,665,137	£2,149,893
TOTAL EXPENDITURE	£1,767,685	£2,206,075
NET MOVEMENT IN FUNDS	£253,982	(£133,520)
RECONCILIATION OF FUNDS:		
Total funds brought forward	£1,064,716	£1,318,648
Net movement in funds	£253,932	(£133,520)
TOTAL FUNDS CARRIED FORWARD	£1,318,648	£1,185,128

# Meet the LEAF team

- Philip Adams, Education Manager

Teresa Andrews, Executive Assistant

Callum Bennett, Farming with Nature Project Manager

Jim Blumire, Bookkeeper

Matthew Bradley, Marketing & Communications Officer

Mollie Burns, Standard Setting Officer

Hope Chapman, Monitoring & Evaluations Officer

Julie Clark, Technical Admin Officer

Rebecca Davis, Technical Coordinator

Angela Demetriou, Monitoring & Evaluation Manager

Lisa Dunne, LEAF Education Specialist

Carl Edwards, Director, Education & Public Engagement

Faye Edwards, LEAF Education Specialist

Lucy Hando, Marketing & Communications Officer

Justine Hards, Marketing & Communications Manager

Bobbie Harvey, LEAF Education Specialist

Jo Hatton, LEAF Education Specialist

Abbey Holman, Standards & Impacts Manager

Justine Hunt, Education Support Coordinator

Steve Jones, Chief Operating Officer

Ellie Knight, Marketing & Communications Coordinator

Elizabeth Lake, LEAF Education Specialist

Jessica Madge, Education & Public Engagement Officer
- Chloe Maloney, Technical Officer

Eleanor Marks, Technical Officer

Olivia McDonagh, Technical Officer

Clare Mike, Director, Technical & Business Development

Harriette Miller, Impacts Coordinator

Ronan Mulcahy, Training Manager

Leocadia Muzah, Assurance Officer

Katy Pallas, LEAF Education Specialist

Pilar Pampin, Technical Officer

Fiona Rust, LEAF Education Specialist

Tabitha Salisbury, Education Programme & Development Manager

Annabel Shackleton, LEAF Open Farm Sunday Manager

Will Sibly, Business Relationships Coordinator

Phil Skentelbery, Assurance Manager

Dan Stevenson, IFM Manager

Kuljit Sumal, Finance Officer

Dawn Teverson, Knowledge Manager

Sherida Walker, Membership Manager

David Webster, Chief Executive

Megan Whatty, IFM Network Coordinator

Daisy Wood, Technical Officer

Sam Wyman, LEAF Education Specialist





# Who’s who at LEAF

## LEAF Board of Trustees

Philip Wynn, LEAF Chairman  
Ian Ashbridge, Bidwells, LEAF Vice Chairman  
Angus Davison, Haygrove Ltd  
Sara Eppel, Eppel Sustainability Ltd  
Tom Green, Spearhead International Ltd  
Caroline Mason, Seeds To Thrive Ltd  
Emma Penny, AgriBriefing Ltd  
Cedric Porter, Supply Intelligence, LEAF Vice Chairman  
Ian Pigott, J W Pigott & Son  
Jane Rickson, Cranfield University  
Ana Romero, Wellington College  
Mike Young, Farmacy PLC

## LEAF Marque Board

David Webster, LEAF Chief Executive  
Steve Jones, LEAF Chief Operating Officer  
Tom Green, Spearhead International Ltd  
Ian Ashbridge, Bidwells  
Angus Davison, Haygrove Ltd

## LEAF Network Advisory Board

Sarah Cowlrick, AICC  
Robert Kynaston, Great Wollaston Farm  
Jacques Launay, DEFRA  
Calum Murray, Innovate UK  
Ron Stobart, Sainsbury’s  
Jonathan Sutton, Westfalia Fruit

## LEAF Marque Technical Advisory Committee

Andrew Francis, TEAM Ag (UK) Ltd. (Chairman)  
Libby Rowland, Barfoots (Vice Chair)  
Carl Edwards, LEAF  
Ed Ford, Beeswax Dyson Farming  
Alice Ritchie, Tesco  
Jake Richards, Sainsbury’s  
Connor Linstead, WWF  
Will McManus, WRAP  
Ed Ford, Dyson Farming  
Joe Revell, Blue Skies  
Mark Holderness, Agri-Food Innovation  
Lucy Tyler, Kingsplay Farming Company  
Natalie McWilliam, DPS Ltd.  
Evi Arachoviti, Innovation for Agriculture  
Jennifer Fulton, Ulster Wildlife  
Jennifer Bromley, Vertical Future  
Paul Billings, Germinal  
Piers Sangan, Sangan Island Conservation Ltd  
Marie Keys, SAI Global Ltd  
Robert Evans, NSF Certification  
Caitlin Burns, Environment Agency  
Craig Murray, DEFRA

## LEAF Open Farm Sunday Ambassadors

Rona Amiss, South West  
Molly Biddell, South East  
Helen Chappell, North West  
Rebecca Dawes, Scotland  
Andy Guy, Midlands  
Anne Mair-Chapman, North East  
Jamie McCoy, Wales  
Jon Myhill, East of England  
Lucy Nott, West Midlands

## LEAF Demonstration Farmers

Robert Addicott, Addicott Partners, Somerset  
Rob Ball, Elveden Farms Ltd, Norfolk  
Brian & Patrick Barker, E J Barker and Sons, Suffolk  
Andy Bason, Newhouse Farm, Hampshire  
Chris Baylis, Sir Richard Sutton Estates Ltd, Lincolnshire  
Sandy Booth & Jackie Barr, New Forest Fruit Company, Hampshire  
Nick & Claire Bragg, Frogmary Green Farm, Somerset  
Hugh Broad, P N Broad and Son, East Lothian  
Philip & Charlie Chamberlain, Crowmarsh Battle Farms Ltd, Oxfordshire  
Nick Down, Yattendon Estate, Berkshire  
Jeremy Durrant, E W Davies Farms  
Duncan Farrington, Bottom Farm, Northamptonshire  
David Felce, R C Felce and Son, Cambridgeshire  
Andrew Ferguson & Andrew Hoad, Leckford Estate, Hampshire  
Jake Freestone & Penelope Bossom, Overbury Enterprises, Gloucestershire  
Simon Gardner – Varfell Farms  
Keith Harris, Silton Manor Farming, Dorset  
Paul Hayward, E Dunning and Son, East Yorkshire  
Paul Kelly & Peter Wilderspin, Park Farm – University of Cambridge  
Andrew Keyte, Ragley Hall Farm, Warwickshire  
William Pitts, The Green House Sussex Ltd, West Sussex  
Charlie Parker, JSR Farms Ltd, East Yorkshire  
David Kennedy & Chris Savage, Morriston Farms, Ayrshire  
Mark Knight, Tangmere Airfield Nurseries Ltd, West Sussex  
Robert Kynaston, Great Wollaston, Shropshire  
Craig Livingstone, Lockerley Estate  
James & Emma Loder-Symonds, Nonington Farms  
Chris Newenham & Andrey Ivanov, Wilkin and Sons Ltd, Essex  
Jeremy & Sue Padfield, Church Farm, Somerset  
Ian Pigott, J W Pigott and Son, Hertfordshire  
Tim Pratt, Wantisden Hall Farms, Suffolk  
John & Helen Renner, Renner Farming, Northumberland  
Mike Renouard, The Jersey Royal Company

Harriet Ross & Ben Lowe, HB Farms/Newseat of Dumbreck, Ayrshire  
Charles Shropshire & Stewart McIntyre, Cambs Farms Growers (G’s), Cambridgeshire  
Robert Smith, Russell Smith Farms, Cambridgeshire  
Anthony Snell, A.J & C.I Snell, Herefordshire  
Matt Waldie, 4 Front Farming  
Ian Waller, Hampden Bottom Farm Ltd, Buckinghamshire  
Duncan Worth & Simon Day, Worth Farms  
Keston Williams & Neil Cairnes, Barfoots of Botley, West Sussex  
Sion Williams, Bowhill Farming Ltd

## LEAF Innovation Centres

Agrii Throws Farm Technology Centre, Essex  
Bangor University, Gwynedd  
Bayer Cropscience, Cambridgeshire  
The Allerton Project, Leicestershire  
Harper Adams University, Shropshire  
Hartpury College and University, Gloucester  
IBERS, Aberystwyth  
James Hutton Institute, Perthshire  
Newcastle University Farms, Northumberland  
NIAB East Malling, Kent  
Rothamsted Research Harpenden, Hertfordshire  
Rothamsted Research North Wyke, Devon  
Royal Agricultural University, Gloucestershire  
SRUC - The Dairy Cattle Research and Innovation Centre, Midlothian  
SRUC – The Hill & Mountain Research Centre, Perthshire  
Stockbridge Technology Centre, Yorkshire  
University of Reading Centre for Dairy Research (CEDAR), Berkshire



## LEAF (Linking Environment And Farming)

LEAF works with farmers, the food industry, scientists, educators and consumers to develop and promote more sustainable, regenerative farming.

Help us achieve our vision of a global farming and food system that delivers climate positive action for farming, food production and society.

- Join us as a member
- Partner with us
- Look out for the LEAF Marque on your fresh produce
- Become LEAF Marque certified

Find out more at [www.leaf.eco](http://www.leaf.eco)



LEAF  
Stoneleigh Park  
Kenilworth  
Warwickshire UK  
CV8 2LG

[enquiries@leaf.eco](mailto:enquiries@leaf.eco)

+44 (0)2476 413 911

LEAF is a registered charity (No. 1045781)

