




Worldwide  
Olympic Partner



Worldwide  
Paralympic Partner



# TOYOTA C-HR

A red Toyota C-HR GR Sport is shown driving on a city street. The car is in the foreground, moving towards the viewer. The background features tall, multi-story buildings with classical architectural details. The scene is captured with a slight motion blur, suggesting the car is in motion. The sky is clear and blue. A man is walking on the sidewalk to the right of the car, and a woman is visible in the distance on the left. The car's license plate area displays 'TOYOTA C-HR GR SPORT'.

Don't just take to the streets – own them. Turn corners, turn heads, turn up. Drive away from convention with the Toyota C-HR. The already iconic Toyota C-HR, with its striking looks and aerodynamic aesthetic, is now rejuvenated as your standout SUV. So step inside the lush interior, take the wheel and power towards your new adventure. With the Toyota C-HR, you will satisfy your need to be bold and go further. Leave ordinary behind.



**LEAVE  
ORDINARY  
BEHIND**

# TIME TO WAKE UP THE CITY

In a world full of ordinary, stand out. Throw away the rule book and trust in the extraordinary. A contemporary coupe with an iconic angular design and compact silhouette, the Toyota C-HR embodies urban mobility. It's coupled with a wide stance, formidable power and impeccable handling, a gift to the winding streets and ever-changing city life. So aspire to be the best, to be yourself and enjoy life's adventures.







A man with a beard and short hair is driving a red car. He is looking out the window to the left, where a city street is blurred, suggesting motion. The car's interior, including the steering wheel and dashboard, is visible in the foreground. The overall tone is dynamic and energetic.

# THRILLING PERFORMANCE, INSTANT POWER

Life is a journey waiting to be driven. Engaging and dynamic, the Toyota C-HR ensures you take on your adventure fully equipped to conquer every road. With instant acceleration exactly when you need it, and power patiently waiting to assume command, you'll take on all challenges on your terms. Exceptionally able, the Toyota C-HR delivers a Hybrid experience that kicks against convention.



## YOUR ROAD, YOUR WAY

Smooth, efficient and powerful, the Toyota C-HR performs as never before. With instant acceleration and further capability from the recently introduced 2.0 litre Hybrid powertrain, you can thread through city streets and power along motorways, defying norms at every opportunity.

### Specifications

#### HYBRID

##### 1.8 PETROL HYBRID AUTO

Power **122 DIN hp**

Fuel consumption\*

**53.3–57.6 mpg**

CO<sub>2</sub> emissions\* **110–120 g/km**

0–62 mph **11.0 seconds**

Available on all grades

#### HYBRID

##### 2.0 PETROL HYBRID AUTO

Power **184 DIN hp**

Fuel consumption\*

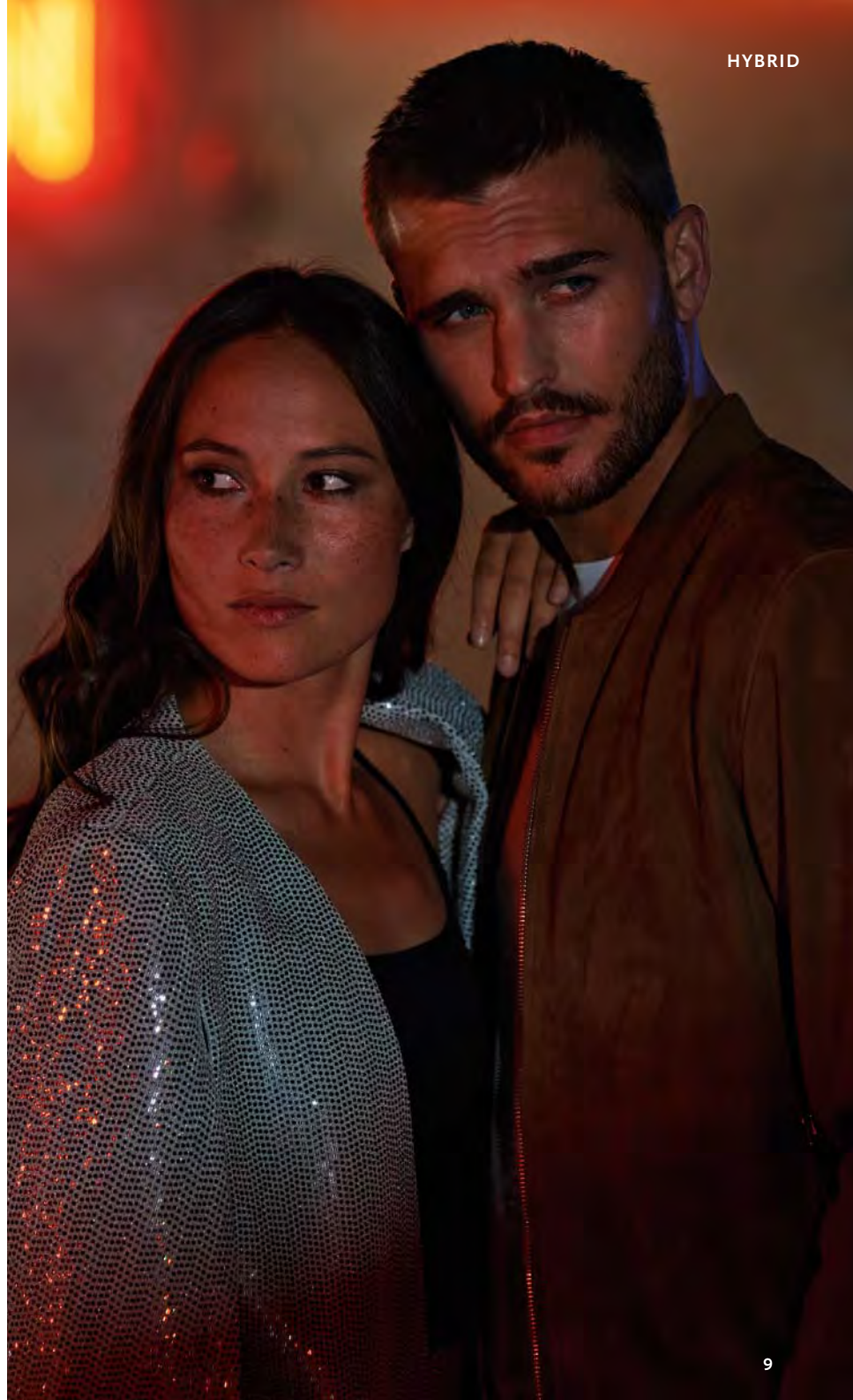
**49.6–54.3 mpg**

CO<sub>2</sub> emissions\* **119–128 g/km**

0–62 mph **8.2 seconds**

Available on **Design, Excel  
and GR SPORT**

\* Combined cycle.



The image shows the interior of a car, likely a Toyota C-HR, at night. The scene is dimly lit, with a soft blue glow emanating from the ambient lighting. The driver's seat and the steering wheel are visible. The steering wheel features the Toyota logo. The car's door is open, and the interior door panel is visible. The background shows a blurred view of the car's exterior and some lights outside.

# CLEAN CUT DETAILS TAKE CENTRE STAGE

You want the most out of every moment: the way you live, the way you work and the way you play. That's why we designed the Toyota C-HR cabin to be enjoyed. With seats that hug and strong diamond patterns that lend prestige, both comfort and style are catered for. Lining the interior, soft-touch surfaces are paired with contrasting gloss black inserts to create a contemporary feel. Then as day fades, the mood changes, and you are bathed in the soft blue glow of the ambient lighting.



## 576 WATTS OF PASSION IMMERSE YOURSELF IN CRISP TREBLE AND RICH BASS

You move to a different beat. We wouldn't want it any other way. That's why the bespoke JBL® audio system\* gives you a clarity you've only experienced live. Connect your smartphone and stream your favourite tracks for an experience that puts the artist in your car.

**Life has a soundtrack, play it loud.**

\* Optional on Excel and GR SPORT.



# CONNECT YOUR PHONE GET MORE FROM YOUR DRIVE

*MyT* | Connected  
Services

## LIFE HAPPENS WHEN YOU CONNECT

MyT Connected Services includes MyT Multimedia and MyT App. Each suite is host to its own set of features, designed to make driving safer and more fun, whether you are inside or outside your vehicle. Through MyT Connected Services, you'll have access to real-time updates such as speed camera warnings and online service booking. In addition you'll have the ability to connect your phone to your car to enjoy your favourite apps directly through the infotainment screen.

Discover more at: [www.toyota.co.uk/owners/vehicle-information/myt](http://www.toyota.co.uk/owners/vehicle-information/myt)





## MyT | Multimedia

INTUITIVE, ADVANCED AND ENTERTAINING

With Smartphone Integration via Apple CarPlay and Android Auto™ you can also use favourite apps like Spotify, WhatsApp, Audible, Google Maps and Waze, all accessible via Siri voice assist and Ok Google.

MyT Multimedia gives you access to the information you really need, like real-time traffic alerts and speed camera warnings. You can also check Points of Interest, locate parking spaces and review destinations with Google Street View.

Apple CarPlay is a trademark of Apple Inc.



## MyT | App

ALWAYS CONNECTED TO YOUR TOYOTA

MyT App on your smartphone lets you communicate with your car, no matter where you are. You can plan journeys from home, locate your parked car and book your service online directly with your preferred dealer.

MyT by Toyota



# YOU DO LIFE, WE DO SAFETY

Take it easy. Toyota C-HR has some of the most sophisticated safety technologies in the world. Stay focused and in the moment while we take care of keeping you and your passengers safe.

**Blind Spot Monitor (BSM)\***

Alerts the driver to any vehicles that might be missed in the side view mirrors.

**Rear Cross Traffic Alert (RCTA-B)\*  
(with Automatic Braking)**

When you back out of a parking space, rear-mounted sensors identify vehicles approaching from the left or right, warning you and then applying the brakes to avoid a collision.

**Simple Intelligent Parking Assist  
(S-IPA)§**

The system helps you to steer your Toyota smoothly into a parking space or garage. All you do is provide the necessary acceleration and braking while the car parks itself.

**Intelligent Clearance Sonar with  
Automatic Braking¶**

Using an array of sensors to create a 360° picture, the system detects objects around the vehicle, and provides an audible warning before applying the brakes to avoid a collision.

\* Standard on Design, Excel and GR SPORT – Optional on Icon as part of Tech pack and Parking Pack.

§ Standard on Design, Excel and GR SPORT.

¶ Standard on Design, Excel and GR SPORT – Optional on Icon as part of Tech Pack and Parking Pack.

All active safety technologies are intended to be back-up systems only and are not a substitute for safe and attentive driving. The functionality of these systems may be impacted by driving conditions. Further information is available from your local Toyota Centre.



TOYOTA C-HR HYBRID

# ICON

## Main features

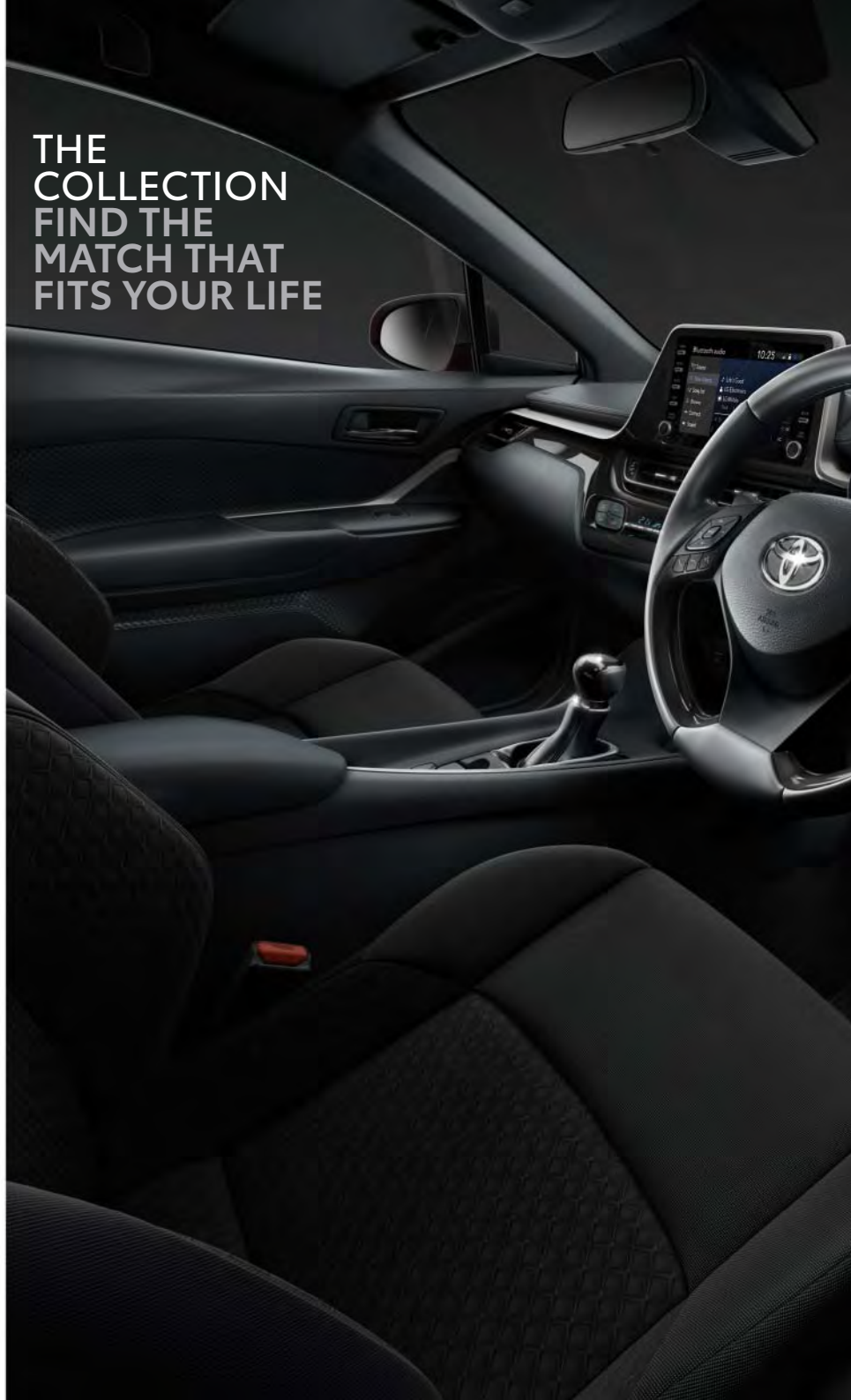
- 17" Silver alloy wheels (5-double-spoke)
- Toyota Safety Sense 2 incl Pre-Collision System with Cyclist Detection, Day and Night-time Pedestrian Detection, Adaptive Cruise Control (ACC), Lane Trace Assist (LTA), Automatic High beam (AHB) & Road Sign Assist (RSA)
- 8" touchscreen with Toyota Touch® 2 media system with Smartphone Integration, including Apple CarPlay and Android Auto™, 6 speakers, DAB & Bluetooth® connectivity, wi-fi & voice recognition
- Reversing camera
- Adaptive Cruise Control (ACC)
- Dual-zone automatic air conditioning
- Push-button start
- 4.2" coloured multi-information display
- 3-spoke leather steering wheel
- Electronic parking brake
- LED Daytime running lights
- LED Auto Headlights
- Front Fog lights
- Grey Deco line
- AVAS (Acoustic Vehicle Approach System)

## Optional features

- 17" Matt black or black machined-face alloy wheels (5-spoke)
- Parking Pack
- Tech pack
- Essential Protection Pack
- Side Steps
- Chrome Pack
- Sport Pack\*
- Sport+ Pack\*
- Protection+ Pack\*

\* Sport Pack & Sport+ Pack are incompatible with a tow bar.

THE  
COLLECTION  
FIND THE  
MATCH THAT  
FITS YOUR LIFE





**START A REVOLUTION**  
AN UNAPOLOGETIC INTRODUCTION  
TO THE TOYOTA C-HR



Black fabric with light  
grey stitching



17" Silver alloy wheels  
(5-double-spoke)



# DESIGN



MAKE A STATEMENT  
SET THE STANDARD WITH PLENTY  
OF EXTRA FEATURES



Black fabric & synthetic leather sports seats



18" Bi-tone black machined-face alloy wheels (5-double-spoke)

## Main features (additional to Icon grade)

- 18" Bi-tone black machined-face alloy wheels (5-double-spoke)
- 8" HD Toyota Smart Connect multimedia system with wireless Smartphone integration, smart voice assist & connected cloud Navigation
- Rear Cross Traffic Alert with Automatic Braking (RCTA-B) & Blind Spot Monitor (BSM)
- Simple Intelligent Parking Assist (S-IPA)
- Front and rear parking sensors with Intelligent Clearance Sonar (ICS) and automatic braking
- Heated front seats with manual height adjustment
- Power-adjustable lumbar support (Driver seat only)
- Smart Entry
- Auto wipers
- Auto-retractable, heated door mirrors with integrated indicator
- Privacy Glass
- Illuminated entry with blue ambient lighting in front doors & cupholders
- Auto dimming rear-view mirror
- Gun Metal Deco line

## Optional features

- 18" Matt black (5-double-spoke) with matt black centre cap
- Full electric black leather seats
- Essential Protection Pack
- Side Steps
- Chrome Pack
- Sport Pack\*
- Sport+ Pack\*
- Protection+ Pack\*

\* Sport Pack & Sport+ Pack are incompatible with a tow bar.



# EXCEL

## Main features (additional to Design grade)

- 18" Dark chrome alloy wheels (10-double-spoke)
- Full black leather electrically heated front seats
- Heated steering wheel
- LED Adaptive headlights
- LED Rear lights with sequential indicators
- LED Fog lights
- Puddle lights
- Silver Deco line

## Optional features

- 18" Matt black (5-double-spoke) with matt black centre cap
- JBL® Premium Sound System with 9 speakers including an 8 channel, 576-Watt amplifier, 2x tweeters, 2x wide-dispersion speakers, 2x woofers and 3x subwoofers
- Essential Protection Pack
- Side Steps
- Chrome Pack
- Sport Pack\*
- Sport+ Pack\*
- Protection+ Pack\*

\* Sport Pack & Sport+ Pack are incompatible with a tow bar.





COMPROMISE IS NOT YOUR STYLE  
NEXT LEVEL LUXURY THAT  
COMES AS STANDARD



Black perforated leather  
with diamond pattern



18" Dark chrome alloy wheels  
(10-double-spoke)





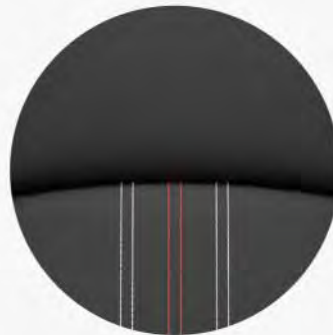
STAND OUT  
WITH SPORTY, REFINED STYLE

**Main features (additional to Design grade)**

- 19" Black machined-face alloy wheels (5-double-spoke)
- Bi-tone paint
- GR SPORT Badges & scuff plates
- GR SPORT Stabilisers
- 3-spoke perforated leather steering wheel with red stitching
- Tinted LED adaptive headlights
- LED Rear lights with sequential indicators
- LED Fog lights
- Puddle lights
- Cool Silver Deco line

**Optional features**

- Full electric black Alcantara® leather seats
- Full electric black Alcantara® leather seats & JBL® Premium Sound System with 9 speakers including an 8 channel, 576-Watt amplifier, 2x tweeters, 2x wide-dispersion speakers, 2x woofers and 3x subwoofers
- Essential Protection Pack
- Protection+ Pack
- Chrome Pack



GR SPORT Black Fabric



19" Black machined-face alloy wheels (5-double-spoke)

MIX IT UP,  
BE BOLD



1K3 Satin Grey<sup>MS</sup>

785 Midnight Teal\*

040 Pure White

089 Platinum White Pearl<sup>0</sup>

3U5 Scarlet Flare<sup>80</sup>

9AH Deep Amethyst\*

209 Eclipse Black\*

1G3 Decuma Grey\*

1L0 Silver Metallic\*

# CHANGE PERSPECTIVE, BE DISTINCT GR SPORT BI-TONE COLOURS



1



2



3



4



5



6



7



8



9

- 1. 2MQ Pure White with black roof
- 2. 2VP Platinum White Pearl<sup>o</sup> with black roof
- 3. 2NB Decuma Grey\* with black roof

- 4. 2YB Midnight Teal\* with black roof
- 5. 2VU Silver Metallic\* with black roof
- 6. 2TB Scarlet Flare<sup>o</sup> with black roof

- 7. 2TH Satin Grey\* with black roof
- 8. 2VF Ash Grey\* with black roof
- 9. 2XE Deep Amethyst\* with black roof

\* Metallic paint.

<sup>§</sup> Not available on Excel.

<sup>o</sup> Pearlescent paint.

## IT'S THE DETAILS THAT COUNT



1. 17" Silver alloy wheels (5-double-spoke) Standard on Icon
2. 18" Bi-tone black machined-face alloy wheels (5-double-spoke) Standard on Design
3. 18" Dark chrome alloy wheels (10-double-spoke) Standard on Excel
4. 19" Black machined-face alloy wheels (5-double-spoke) Standard on GR SPORT
5. 17" Matt black alloy wheels (5-spoke) Optional on Icon
6. 17" Black machined-face alloys (5-spoke) Optional on Icon
7. 18" Matt black alloy wheels (5-double-spoke with matt black wheel caps) Optional on Design and Excel



1. **Black fabric with light grey stitching** Standard on Icon
2. **Black fabric & synthetic leather sports seats** Standard on Design
3. **Black perforated leather with diamond pattern** Standard on Excel, optional on Design
4. **GR SPORT Black Fabric** Standard on GR SPORT
5. **GR SPORT Black Alcantara®** Optional on GR SPORT

## STYLE WITHOUT COMPROMISE SPORT PACK



Rear Underguard & Side Underrun



Front Skirt

## SPORT+ PACK



Front Skirt & Side Skirt



Rear Underguard & Side Underrun



Front Underguard & Side Underrun

Vehicle shown is for illustrative purposes only.

Choice of options and accessories fitted (pre-registration) may affect the official CO<sub>2</sub> figures, car tax and 'on the road' price.

## DISCOVER YOUR C-HR



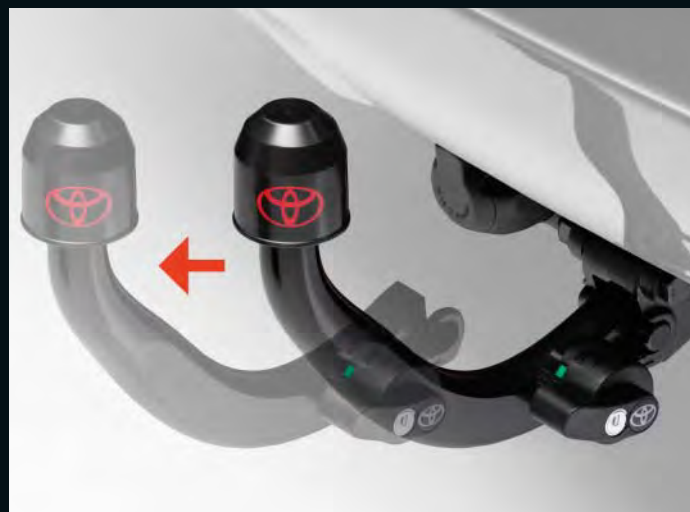
Luggage box



Ski holder



Crossbars



Toyota C-HR towing options consist of a detachable tow bar with a choice of either a 7- or 13-pin dedicated Toyota genuine wiring kit.

Supplied with a smart protective tow-ball cap which can be neatly placed over tow-ball when not towing. The hook is easily removed from the mount by means of a release knob which incorporates a dedicated security lock.

The detachable tow bar is designed for your car's maximum towing capacity, which varies depending on engine type.

# COMPLETE PROTECTION

## ESSENTIAL PROTECTION PACK



### Boot liner

Tailored to fit the boot of your vehicle, the boot liner offers a durable protective tray which is removable and easy to clean. Perfect for travelling pets.



**Rear bumper protection plate (polished chrome or black)**  
A polished chrome rear bumper protection providing tough paintwork protection when loading or unloading the boot.

## SIDE STEPS



### Side Steps

Vehicle shown is for illustrative purposes only.

## CHROME PACK



### Fog Light Surrounds



### Side Sills & Boot Garnish

## PROTECTION+



Rear bumper protection plate (chrome or black)



Boot liner



**Rubber floor mats**

Designed to protect your car's interior, rubber floor mats are lightweight, waterproof and incredibly hard-wearing.

# SPECIFICATIONS

ENVIRONMENTAL PERFORMANCE	1.8 Petrol Hybrid	2.0 Petrol Hybrid
Fuel economy – combined max WLTP (mpg)	53.3–57.6	49.6–54.3
Combined CO <sub>2</sub> (g/km)	110–120	119–128
Fuel grade – recommended	95 or higher	95 or higher
Fuel tank capacity (l)	43	43
Euro class	EURO 6 AM	EURO 6 AP
Carbon monoxide, CO (mg/km)	69.8	190.5
Hydrocarbons, THC (mg/km)	11	19.9
Hydrocarbons, NMHC (mg/km)	8.7	17.2
Nitrogen Oxides, NOx (mg/km)	3.6	4.9
Sound Level Drive by (dB(A))	66.7	65.0

**Quoted mpg and CO<sub>2</sub>:** Figures are provided for comparability purposes; only compare fuel consumption and CO<sub>2</sub> figures with other cars tested to the same technical procedures. These figures may not reflect real-life driving results.

All vehicles are certified according to the World Harmonised Light Vehicle Test Procedure (WLTP). CO<sub>2</sub> figures (and hence car tax and recommended 'on the road' prices) may differ from information printed before 1 April 2020, due to a change in the official method of calculation. This date may change, please visit [www.vehicle-certification-agency.gov.uk/fcb/wltp.asp](http://www.vehicle-certification-agency.gov.uk/fcb/wltp.asp) for the latest information.

Please contact your local Toyota Centre for further information.

ENGINE	1.8 Petrol Hybrid	2.0 Petrol Hybrid
Engine code	2ZR-FXE	M20A-FXS
Number of cylinders	4 in line	4 in line
Valve mechanism	16-valve DOHC, chain drive (with VVT-i)	16-valve DOHC, chain drive (with VALVEMATIC and dual VVT-i)
Fuel injection system	SFI	SFI
Displacement (cc)	1798	1987
Bore x stroke (mm x mm)	80.5 x 88.3	80.5 x 97.6
Compression ratio	13.0:1	14.0:1
Maximum output (kW@rpm)	90	135
Maximum output (DIN hp)	122	184
Maximum torque (Nm@rpm)	142/3600	190/4400–5200
Total hybrid system output (kW)	72	112
Total hybrid system output (DIN hp)	122	184

**1.8 ELECTRIC FRONT MOTOR****HYBRID BATTERY**

Type	Permanent magnet motor	Type	Lithium-ion
Maximum output (kW)	53	Number of battery modules	56
Maximum torque (Nm)	163	Battery capacity Ah (hr)	3.6

**2.0 ELECTRIC FRONT MOTOR****HYBRID BATTERY**

Type	Permanent magnet motor	Type	Lithium-ion
Maximum output (kW)	80	Number of battery modules	180
Maximum torque (Nm)	202	Battery capacity Ah (hr)	6.5

**TRANSMISSION****1.8 Petrol Hybrid****2.0 Petrol Hybrid**

Transmission type	Automatic	Automatic
-------------------	-----------	-----------

**PERFORMANCE**

Maximum speed (mph)	105	111
Acceleration 0–62 (mph) (sec)	11.0	8.2
Drag coefficient	0.32	0.32

**WEIGHTS & TOWING CAPACITY**

Gross train weight – total (kg)	2585	2655
Gross vehicle weight – total (kg)	1860	1930
Kerb weight / unladen weight (kg)	1420–1460	1490–1525
Maximum trailer weight – braked (kg)	725	725
Maximum trailer weight – unbraked (kg)	725	725
Gross vehicle weight – front (kg)	1050	1050
Gross vehicle weight – rear (kg)	1080	1080

**SUSPENSION**

Front	MacPherson Strut	MacPherson Strut
Rear	Double wishbone	Double wishbone

**BRAKES**

Front	Ventilated disc	Ventilated disc
Rear	Disc	Disc

# SPECIFICATIONS

## EXTERIOR DIMENSIONS

	1.8 Petrol Hybrid	2.0 Petrol Hybrid
Exterior length (mm)	4390	4395
Exterior width (mm)	1795	1795
Exterior height (mm)	1555	1555
Front tread (mm)	1540	1550
Rear tread (mm)	1550	1560
Overhang front (mm)	935	935
Overhang rear (mm)	815	820
Wheelbase (mm)	2640	2640

## INTERIOR DIMENSIONS

	1.8 Petrol Hybrid	2.0 Petrol Hybrid
Number of seats	5	5
Interior length (mm)	1800	1800
Interior width (mm)	1455	1455
Interior height (mm)	1210	1210

## CAPACITY

	1.8 Petrol Hybrid	2.0 Petrol Hybrid
5 seat mode – laden to parcel shelf (l)	377	358
5 seat mode – laden to roof (l)	443	424
2 seat mode – laden to parcel shelf (l)	924	862
2 seat mode – laden to roof (l)	1164	1102

## STEERING

	1.8 Petrol Hybrid	2.0 Petrol Hybrid
Turning radius tyre (m)	5.2	5.2

**OFF ROAD**

**1.8 Petrol Hybrid**

**2.0 Petrol Hybrid**

Minimum running ground clearance (mm)	142	142
Approach angle (°)	14	14
Ramp break-over angle (°)	26	26

**WHEELS**

**ICON**

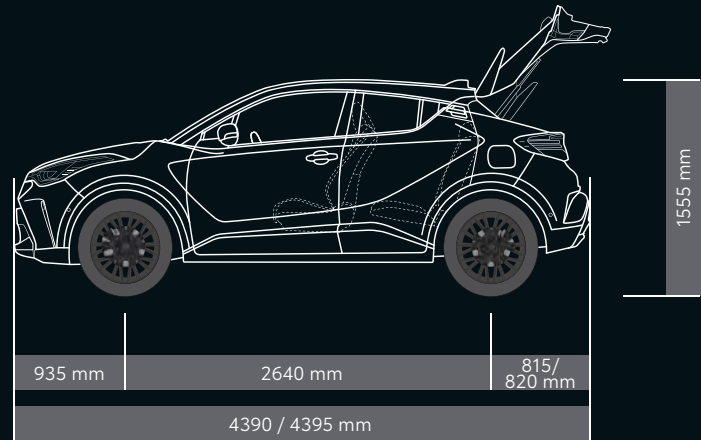
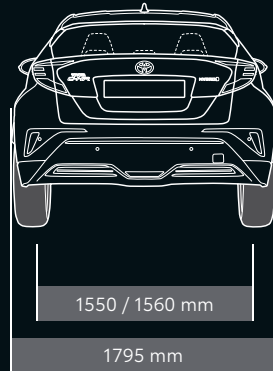
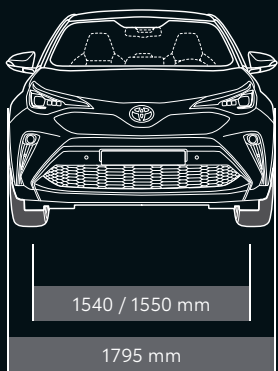
**DESIGN**

**EXCEL**

**GR SPORT**

17" Silver alloy wheels (5-double-spoke)	●	–	–	–
18" Bi-tone Black Machined-face alloy wheels (5-double-spoke)	–	●	–	–
18" Dark chrome alloy wheels (10-double-spoke)	–	–	●	–
19" Black Machined-face alloy wheels (5-double-spoke)	–	–	–	●
Tyre Repair Kit (TRK)	●	●	●	●

● = Standard    – = Not Available



# EQUIPMENT

## EXTERIOR STYLING

	ICON	DESIGN	EXCEL	GR SPORT
Shark-fin antenna	●	●	●	●
GR SPORT badge	—	—	—	●
Body-coloured front bumper	●	●	●	●
Black & body-coloured rear bumper	●	●	●	●
Body-coloured door handles	●	●	●	●
Black lower front grille	●	●	●	—
Dark chrome lower front grille	—	—	—	●
LED front light guide	—	—	●	●
Privacy glass	—	●	●	●
Rear bumper with black and chrome inserts*	—	—	—	●
Rear bumper with chrome plated inserts*	—	●	●	—
Rear spoiler	●	●	●	●
Tinted headlights	—	—	—	●

## EXTERIOR COMFORT

Auto headlights	●	●	●	●
Auto wipers	○ <sup>5</sup>	●	●	●
Automatic headlight cut-off	●	●	●	●
Auto-retractable door mirrors	○ <sup>5</sup>	●	●	●
Electric heated power-adjustable door mirrors	●	●	●	●
Manually retractable door mirrors	●	—	—	—
Boot door release with Push-button	●	●	●	●
Follow-me-home headlights	●	●	●	●
Headlight cut-off reminder	●	●	●	●
Puddle lights	○ <sup>5</sup>	—	●	●
Remote door lock	●	●	●	●
Push-button start	●	●	●	●
Smart Entry & Push-button start	○ <sup>5</sup>	●	●	●

## INTERIOR STYLING

3-spoke Leather steering wheel with black stitching	●	●	●	—
3-spoke Perforated Leather steering wheel with red stitching	—	—	—	●
Toyota C-HR scuff plates	●	●	●	—
GR SPORT scuff plates	—	—	—	●
Chrome interior door handles	●	●	●	●
Grey deco line on upper dashboard	●	—	—	—
Gun Metal deco line on upper dashboard	—	●	—	—
Silver deco line on upper dashboard	—	—	●	—
Cool Silver deco line on upper dashboard	—	—	—	●

## INTERIOR STYLING

ICON

DESIGN

EXCEL

GR SPORT

	ICON	DESIGN	EXCEL	GR SPORT
Black upper dashboard, door insert & centre armrest	●	●	–	●
Dark brown upper dashboard, door insert & centre armrest	–	–	●	–
Electronic parking brake	●	●	●	●
Leather gear shift	●	●	●	●
Light blue ambient lighting on front cup holders	–	●	●	●
Light blue ambient lighting on front doors	–	●	●	●

## INTERIOR COMFORT

Dual-zone automatic air conditioning	●	●	●	●
Heated driver & front passenger seats	–	●	●	●
Manually height-adjustable, reclining & sliding driver seat	●	●	–	●
Manually reclining & sliding front passenger seat	●	●	●	●
Manually height-adjustable front passenger seat	–	●	●	●
Power-adjustable lumbar support on driver seat	–	●	●	●
Power-height-adjustable, reclining & sliding driver seat	–	○ <sup>o</sup>	●	○ <sup>o</sup>
Power-tilting cushion on driver seat	–	○ <sup>o</sup>	●	○ <sup>o</sup>
Heated steering wheel	–	–	●	–
Manual telescopic & tilting steering wheel	●	●	●	●
Audio, multi-media & telephone switches on steering wheel	●	●	●	●
Lane Departure Alert (LDA) switch on steering wheel	●	●	●	●
Voice recognition switch on steering wheel	●	●	●	●
12v power socket - Front	●	●	●	●
4.2" Colour multi-information display	●	●	●	●
60:40 split-folding rear seats	●	●	●	●
Front & rear power windows	●	●	●	●
Auto up & down function & anti-jam on power windows	●	●	●	●
Boot light	●	●	●	●
Clean air filter	●	●	●	●
Driver & front passenger personal lights & mirrors	●	●	●	●
Electrochromatic auto-dimming rear view mirror	○ <sup>s</sup>	●	●	●
Illuminated entry system	●	●	●	●
Noise reduction layer on windscreen & front windows	●	●	●	●
Power passenger window lock	●	●	●	●
Rear window defogger	●	●	●	●
Rear window wiper	●	●	●	●
UV-filter on driver & front passenger windows	●	●	●	●
UV-filter on rear windows	●	●	●	●

\* 2.0 Petrol Hybrid.

<sup>s</sup> Optional as part of the Tech Pack.<sup>o</sup> Optional as part of the Black Leather Pack / Black Alcantara Leather Pack.

● = Standard

○ = Optional

– = Not Available

# EQUIPMENT

## STORAGE

	ICON	DESIGN	EXCEL	GR SPORT
Boot underfloor storage*	—	●	●	●
Driver & passenger seatback pockets	—	●	●	●
Front cup holders	●	●	●	●
Glovebox with light	●	●	●	●
Hard tonneau cover	●	●	●	●
Hooks for shopping bags & luggage holding net	●	●	●	●

## MULTIMEDIA

8" Toyota Touch® 2 multimedia system	●	—	—	—
8" HD Toyota Smart Connect multimedia system with wireless Smartphone integration, smart voice assist & connected cloud Navigation	—	●	●	●
Smartphone integration incl Apple CarPlay & Android Auto™	●	●	●	●
6 speakers	●	●	●	●
JBL® Premium Sound System	—	—	○ <sup>o</sup>	○ <sup>o</sup>
9 speakers	—	—	○ <sup>o</sup>	○ <sup>o</sup>
Aux-in connector	●	●	●	●
Bluetooth® Connectivity	●	●	●	●
Digital Audio Broadcast (DAB)	●	●	●	●
Microphone on front personal light	●	●	●	●
USB connector	●	●	●	●
Wi-Fi connectivity	—	●	●	●

## SAFETY

Adaptive Cruise Control (ACC)	●	●	●	●
Automatic High Beam (AHB)	●	●	●	●
Blind Spot Monitor (BSM)	○ <sup>s</sup>	●	●	●
Intelligent Front & Rear parking sensors with clearance sonar & automatic braking	○ <sup>s</sup>	●	●	●
Lane Departure Alert (LDA) with Steering Control	●	●	●	●
Lane Trace Assist (LTA)	●	●	●	●
Pre-Collision System with Cyclist Detection	●	●	●	●
Pre-Collision System with Pedestrian Day & Night-time detection	●	●	●	●
Rear Cross Traffic Alert with Automatic Braking (RCTA-B)	○ <sup>s***</sup>	●	●	●
Reversing Camera	●	●	●	●
Road Sign Assist (RSA)	●	●	●	●
Simple Intelligent Parking Assist (S-IPA)	—	●	●	●
Adjustable Speed Limiter (ASL)	●	●	●	●

SAFETY	ICON	DESIGN	EXCEL	GR SPORT
Automatic headlight levelling	–	–	●	●
Child safety locks on rear doors	●	●	●	●
Driver & front passenger Whiplash Injury Lessening (WIL) seats	●	●	●	●
Front fog lights	●	●	–	–
Front seat belt reminder	●	●	●	●
Glass-breaking alarm sensors	●	●	●	●
Hill-start Assist Control (HAC)	●	●	●	●
Immobiliser	●	●	●	●
Intrusion Alarm	●	●	●	●
Intrusion Sensor	●	●	●	●
ISOFIX child restraint system	●	●	●	●
LED Adaptive Front light System (AFS)	–	–	●	●
LED Daytime running lights	●	●	●	●
LED Front fog lights	–	–	●	●
LED High mounted stop light	●	●	●	●
LED Rear brake lights	–	–	●	●
LED Rear combination lights	–	–	●	●
LED Reflector headlights	●	●	–	–
Manual headlight levelling	●	●	–	–
Motion sensor alarm	●	●	●	●
Passenger airbag on/off-switch	●	●	●	●
Pre-tensioners and force limiters	●	●	●	●
Rear seat belt reminder	●	●	●	●
Supplemental Restraint System (SRS) airbags – 5 air bags	●	●	●	●
Tyre Pressure Monitoring System (TPMS)	●	●	●	●
Tyre Pressure Warning System (TPWS)	●	●	●	●
Vehicle Stability Control (VSC)	●	●	●	●

### PERFORMANCE, TRANSPORT & PROTECTION

Front & Rear Stabilisers	●	●	●	–
GR SPORT Front & Rear Stabilisers	–	–	–	●
Front & Rear spoilers	●	●	●	●
Floor mats	●	●	●	–
GR Floor mats	–	–	–	●

\* 2.0 Petrol Hybrid.

<sup>§</sup> Optional as part of the Tech Pack.

<sup>°</sup> Optional as part of the JBL® Premium Sound System Pack.

\*\* Not available on Icon (RCTA).

● = Standard

○ = Optional

– = Not Available

# EQUIPMENT

OPTION PACKS	ICON	DESIGN	EXCEL	GR SPORT
Parking Pack: Front & rear parking sensors with Intelligent Clearance Sonar and Automatic braking	○	●	●	●
Tech Pack: Smart entry, Rear Cross Traffic Alert (RCTA-B), Blind Spot Monitor (BSM), Auto-retractable door mirrors with puddle lights, Auto-dimming rear-view mirror & Auto wipers. Front & rear parking sensors with Intelligent Clearance Sonar and Automatic braking	○	—	●	●
Black Leather Pack: Full Electric Black Leather seats	—	○	●	—
Black Alcantara® Leather: Full Electric Black Alcantara® leather seats	—	—	—	○
JBL® Premium Sound System with 9 speakers: JBL® Premium Sound System with 9 speakers including an 8-channel, 576-watt amplifier, 2x tweeters, 2x wide-dispersion speakers, 2x woofers and 3x subwoofers	—	—	○	—
Black Alcantara® Leather & JBL® Premium Sound System with 9 Speakers: Full Electric Black Alcantara® Leather seats & JBL® Premium Sound System with 9 Speakers including an 8-channel, 576-watt amplifier, 2x tweeters, 2x wide-dispersion speakers, 2x woofers and 3x subwoofers	—	—	—	○
Metallic paint	○	○	○	○
Pearlescent paint (Platinum White Pearl & Scarlet Flare)	○	○	○	○

CUSTOMISATION PACKS	ICON	DESIGN	EXCEL	GR SPORT
17" alloys: Matt Black (5-spoke)	○	–	–	–
17" alloys: Black Machined-face (5-spoke)	○	–	–	–
18" alloys: Matt Black (5-double-spoke) with Matt Black Centre Cap	–	○	○	–
Essential Protection Pack: Choice of black/chrome rear bumper protection plate & boot liner	○	○	○	○
Protection+ Pack: Choice of black/chrome rear bumper protection plate, boot liner & rubber floor mats	○	○	○	○
Side Steps: Black side steps with stainless steel anti-slip	○	○	○	–
Chrome Pack: Chrome side sills, fog lamp surrounds & rear boot garnish	○	○	○	–
Sport Pack: Front skirt, rear underguard & side underrun	○*	○*	○*	–
Sport+ Pack: Front underguard, rear underguard & side skirts	○*	○*	○*	–
Towing Solutions: detachable – 7-pin & 13-pin	○	○	○	–
Nextbase front-facing dash camera (Centre fitment only)	○	○	○	○
Nextbase front and rear-facing dash camera (Centre fitment only)	○	○	○	○
Medium taxi-screen (Centre fitment only)	○	○	○	○

\* Sport Pack & Sport+ Pack are incompatible with a Towbar.

● = Standard    ○ = Optional    – = Not Available

# INSPIRING THE WORLD TO MOVE

Over 85 years of innovation have brought us our greatest mission yet: giving the freedom of movement to humankind. That's why Toyota is the Worldwide Official Mobility Partner of the International Olympic Committee and the International Paralympic Committee and proud partner of Team GB and Paralympics GB.

We are committed to making movement better for everyone, whether that be across a country, a city or across a room, because when you are free to move, anything is possible.

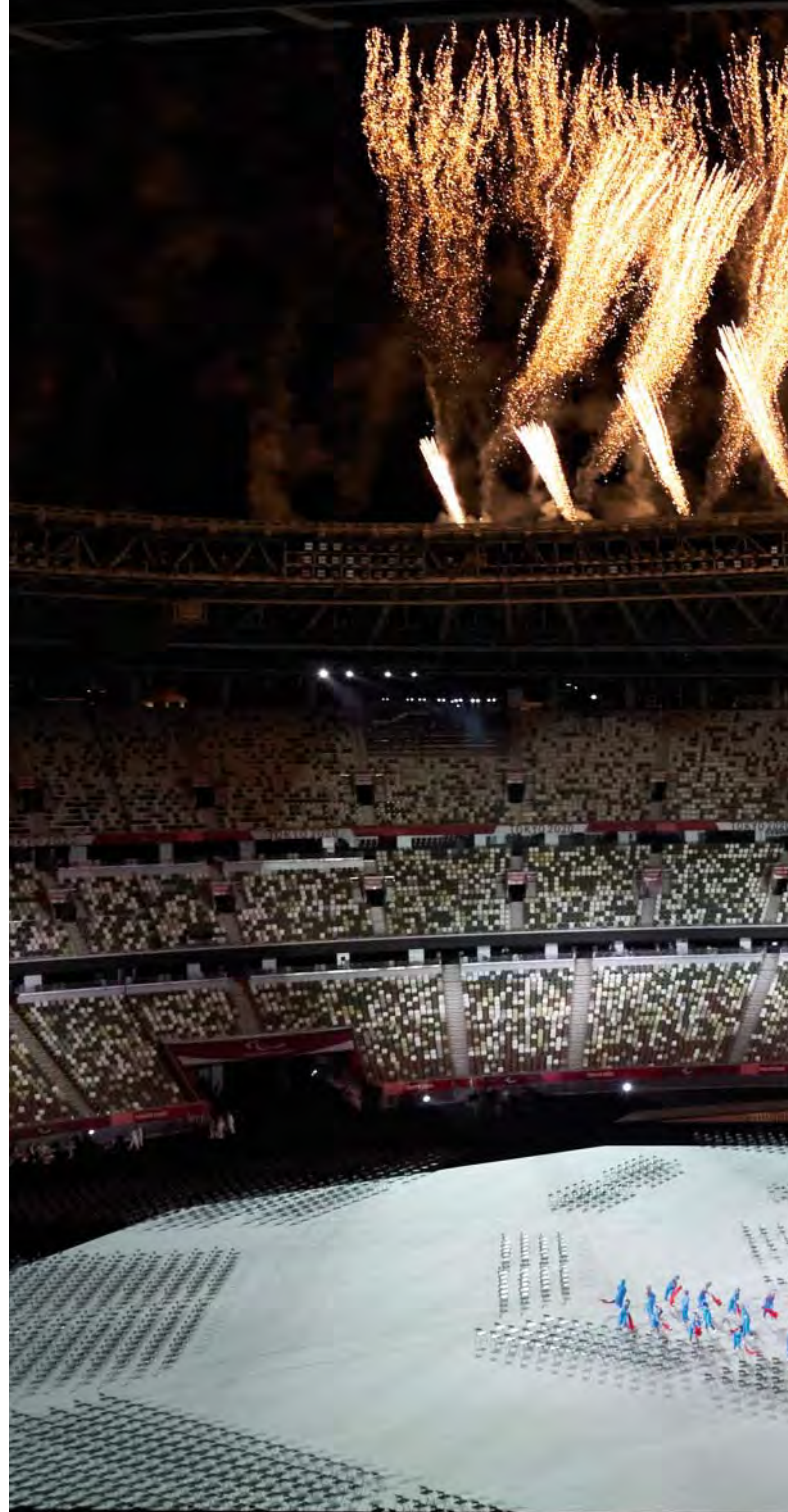
START YOUR  
**IMPOSSIBLE**



Worldwide  
Olympic Partner



Worldwide  
Paralympic Partner





# OWNING YOUR TOYOTA C-HR

## Servicing your Toyota

Toyota Service Pricing means you will be sure to know the cost of your service up front. Expertly trained technicians using only genuine Toyota parts will carry out your service at one of over 200 Authorised Toyota Service Centres. The technicians will advise you on the correct service for your car based on the car's age, mileage and service history.

For more information visit [toyota.co.uk/owners/servicing-and-aftercare/service-mot-maintenance](http://toyota.co.uk/owners/servicing-and-aftercare/service-mot-maintenance)

## Service Plans

Inflation-proof pricing with a monthly or one-off payment plan means one less thing to worry about. With Toyota Service Plans the price you're quoted is guaranteed for the duration of your plan. The service, parts and labour are all paid for either in monthly instalments or as a one-off payment at the beginning of your plan.

For more information visit [toyota.co.uk/owners/servicing-and-aftercare/service-mot-maintenance](http://toyota.co.uk/owners/servicing-and-aftercare/service-mot-maintenance)

## Toyota Price Repairs using Genuine Parts

We offer transparent prices on a number of repair items for your Toyota giving you peace of mind when it comes to managing costs. Also don't forget we only use genuine Toyota parts, all of which come with at least 12 months' warranty (some even offer unlimited mileage warranties); and your car will always be dealt with by a trained Toyota technician.

For more information visit [toyota.co.uk/owners/parts-accessories/parts](http://toyota.co.uk/owners/parts-accessories/parts)

## MyT

Whether you're a long-term owner or have recently taken delivery of a new Toyota, there are lots of reasons to join **MyT**. Packed with time-saving and convenient features, **MyT** ensures everything you need to manage your vehicle ownership is in one place. You'll also gain access to **My Rewards** where you can enjoy great offers and discounts from big brands on everything from family days out to pampering as well as everyday deals.

For more information visit [toyota.co.uk/mytoyota](http://toyota.co.uk/mytoyota) or download the **MyT** app now available on iTunes® and Android.

## Toyota Accessories

Toyota accessories are designed and manufactured with the same care, quality and attention to detail as Toyota vehicles. Tailor-made for your Toyota, they fit perfectly and add a personal touch of style, comfort and practicality. Also, because they've been tested under the most severe conditions, you can have complete confidence in their reliability and durability.

For more information visit [toyota.co.uk/owners/parts-accessories/parts](http://toyota.co.uk/owners/parts-accessories/parts)

## Toyota Roadside Assistance

When you buy a new Toyota you will automatically receive 12 months' AA Roadside Assistance in the UK and Europe, free of charge. After the first year, you can renew this cover by calling 0344 701 6201 or visiting [toyota.co.uk/owners/roadside-assistance/](http://toyota.co.uk/owners/roadside-assistance/)



### Get up to 10 years/100,000 miles

#### Toyota Warranty\*

Every new Toyota comes with a 3 year manufacturer warranty followed by a 12 months/10,000 miles additional warranty, with every qualifying service.

For more information visit <https://www.toyota.co.uk/owners/toyota-warranty>

#### Corrosion Cover

The 12-year unlimited mileage cover protects against rust perforation affecting sheet metal body panels as a result of a manufacturing fault. This warranty can also be transferred to any future owner throughout the 12-year period.

#### Rust and Paint Cover

The 3-year unlimited mileage cover protects against defects and surface rust as a result of a manufacturing fault.

### Toyota Business Centre

Our Toyota Business Centre network promises you sameday access to a business manager or dedicated sales executive. With business offers and interactive wholelife cost modelling tools which consider emissions, fuel economy, servicing, insurance and residual value data, our advisers can accurately compare tax costs against any competitor. Whenever servicing is due, we can offer fixed-price servicing, free local vehicle collection and delivery (with wash and vac).

Special offers, fixed-price fleet servicing, specialist fleet insurance, business daily hire, Toyota Fleet Financial Services, extended test drives and a dedicated Business Centre Network are just some of the services business customers can expect from Toyota.

For more information visit [toyota.co.uk/businesscustomers](https://www.toyota.co.uk/businesscustomers)

### Toyota Motor Insurance

Toyota Motor Insurance is available for Toyota owners at competitive premiums. To obtain details of the benefits included and to arrange a quotation, please contact your local Toyota Centre or call 0800 350 500.

### Flexible Finance from Toyota Financial Services

All our plans offer easy budgeting and peace of mind, and **AccessToyota** brings these benefits together in one flexible package.

Toyota Financial Services, Great Burgh, Burgh Heath, Epsom, Surrey, KT18 5UZ.

Finance subject to status to over 18s only. Indemnities may be required. Terms and conditions apply.

TFS is authorised and regulated by the Financial Conduct Authority.



**Toyota**  
Financial Services

\* Terms and conditions apply. For full details, please ask your official Toyota Centre or visit <https://www.toyota.co.uk/owners/toyota-warranty>



# THE TOYOTA C-HR HYBRID LEAVE ORDINARY BEHIND

[www.toyota.co.uk/C-HR](http://www.toyota.co.uk/C-HR)

While every effort is made to reproduce accurate information, we reserve the right to change specifications, equipment and availability without prior notice. This brochure cannot be regarded as infallible (some of the vehicles shown may not be to exact UK specification), and as such does not constitute an offer for sale of any particular vehicle or specification. For the latest specification and availability, we ask that you contact your local Toyota Centre. Vehicle body colours may differ slightly from the printed images in this brochure.

Quoted mpg and CO<sub>2</sub>: Figures are provided for comparability purposes; only compare fuel consumption and CO<sub>2</sub> figures with other cars tested to the same technical procedures. These figures may not reflect real-life driving results. Fuel consumption and CO<sub>2</sub> produced varies significantly depending on a number of factors, including the accessories fitted (post-registration), driving style, conditions, speed and vehicle load.

All models and grades are certified according to the World Harmonised Light Vehicle Test Procedure (WLTP). All mpg and CO<sub>2</sub> figures quoted are full WLTP figures.

The official CO<sub>2</sub> figures for vehicles changed as from 6 April 2020, due to a change in the official method of calculation. CO<sub>2</sub> figures are used in the calculation of Vehicle Excise Duty (car tax) for new cars during their first year of registration. As a result, all CO<sub>2</sub> figures, car tax and 'on the road' prices for new vehicles, which were provided or displayed prior to 6 April 2020, may now have changed for vehicles which were not registered before that date. These dates may change, please visit [www.vehicle-certification-agency.gov.uk/fcb/wltp.asp](http://www.vehicle-certification-agency.gov.uk/fcb/wltp.asp) for the latest information.

Please contact your local Toyota Centre for further information.

© 2022 by Toyota Motor Europe NV/SA ('TME'). No part of this publication may in any way be reproduced without the prior written approval of Toyota (GB) PLC.



ToyotaUK



@ToyotaUK

GBNGV-1220B-CH October 2022