

LEAN  CALE

**SquirrelSQL Client - Windows**

# Table of Contents

- 1. Introduction ..... 1
  - 1.1. License ..... 1
- 2. Download ..... 1
- 3. Installation ..... 1
  - 3.1. Linux ..... 1
- 4. Run Client ..... 10
  - 4.1. Windows ..... 10
- 5. Connection drivers ..... 10
- 6. Download JDBC driver ..... 10
- 7. Install JDBC driver ..... 11
- 8. Connect to LeanXcale ..... 14
- 9. Setting up a connection ..... 15

# 1. Introduction

DBeaver is an SQL client and a database administration tool. For relational databases it uses the JDBC API to interact with databases via a JDBC driver. For other databases (NoSQL) it uses proprietary database drivers. It provides an editor that supports code completion and syntax highlighting. It provides a plugin architecture (based on the Eclipse plugins architecture) that allows users to modify much of the application's behavior to provide database-specific functionality or features that are database-independent. This is a desktop application written in Java and based on Eclipse platform.

## 1.1. License

The community edition (CE) of DBeaver is a free and open source software that is distributed under the Apache License. A closed-source enterprise edition of DBeaver is distributed under a commercial license.

## 2. Download

*Table 1. Download options*

| OS    | Download Link   |
|-------|---|
| Linux | <a href="https://dbeaver.io/download/">https://dbeaver.io/download/</a> |

## 3. Installation

Generally, installation is done by running the installer from the command line with a `java -jar squirrel-sql-<version>-install.jar` type command. For details, see below.

To install DBeaver:

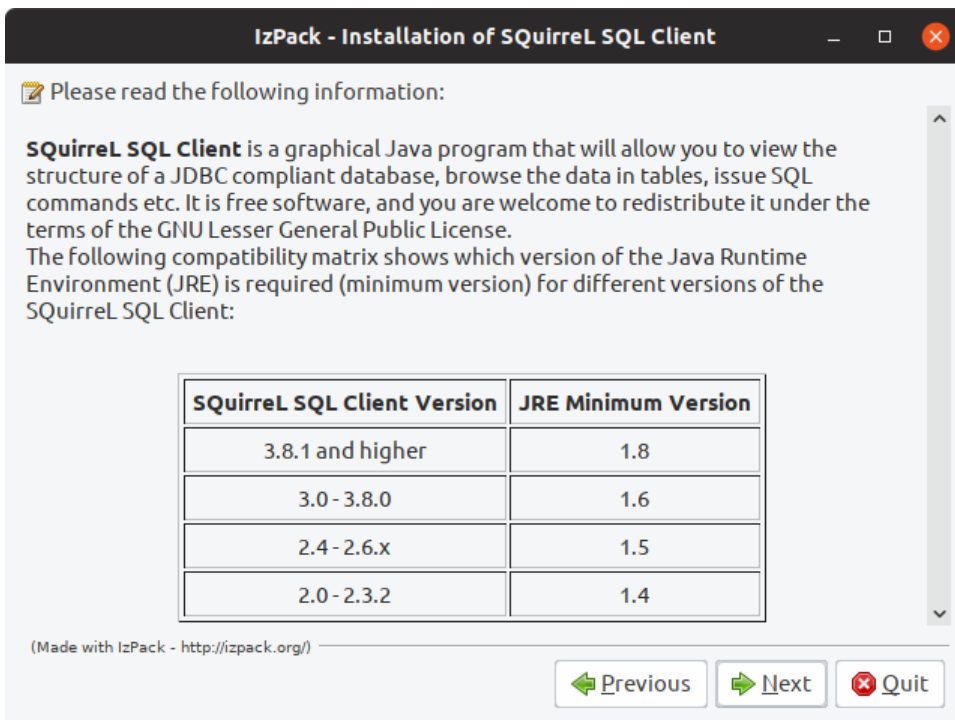
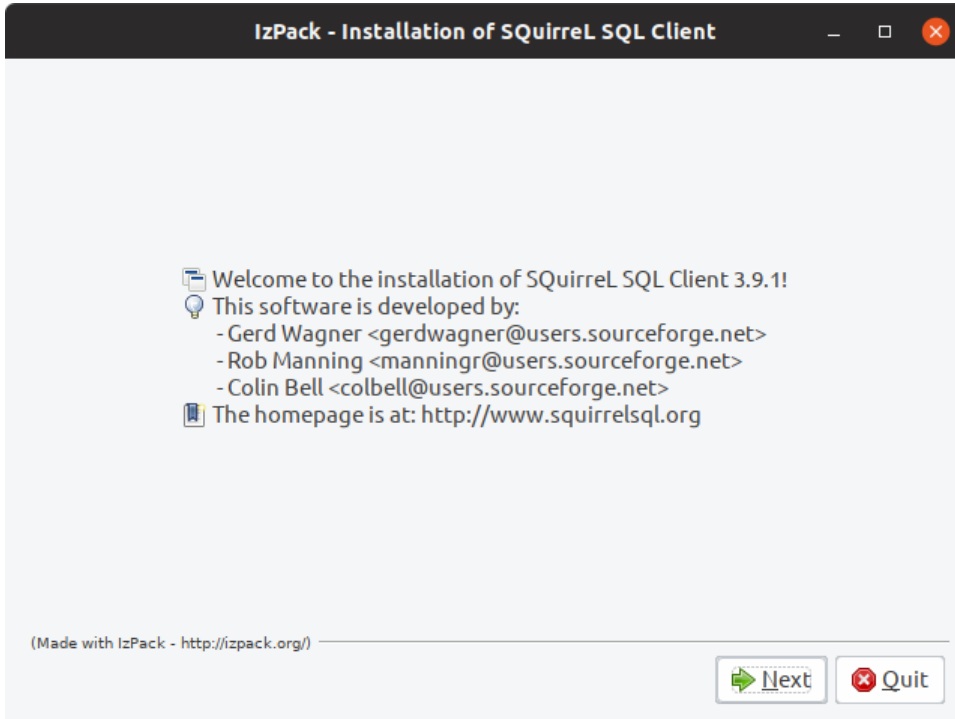
- Open a console/command line window
- Decide which directory you want to install into
- Make sure that you have write access to that directory

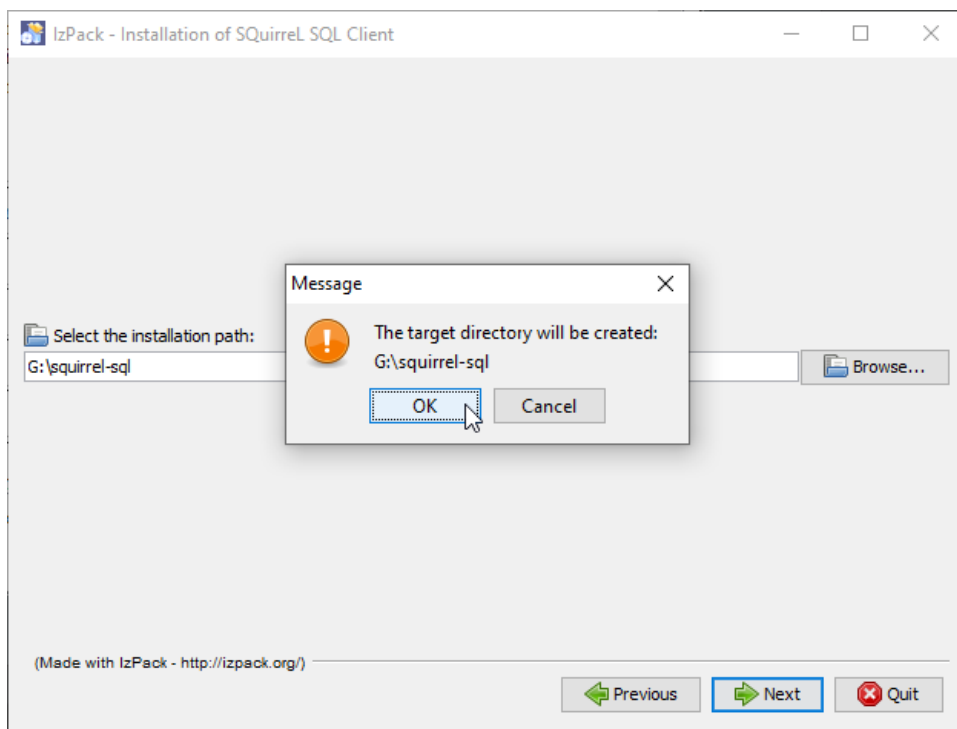
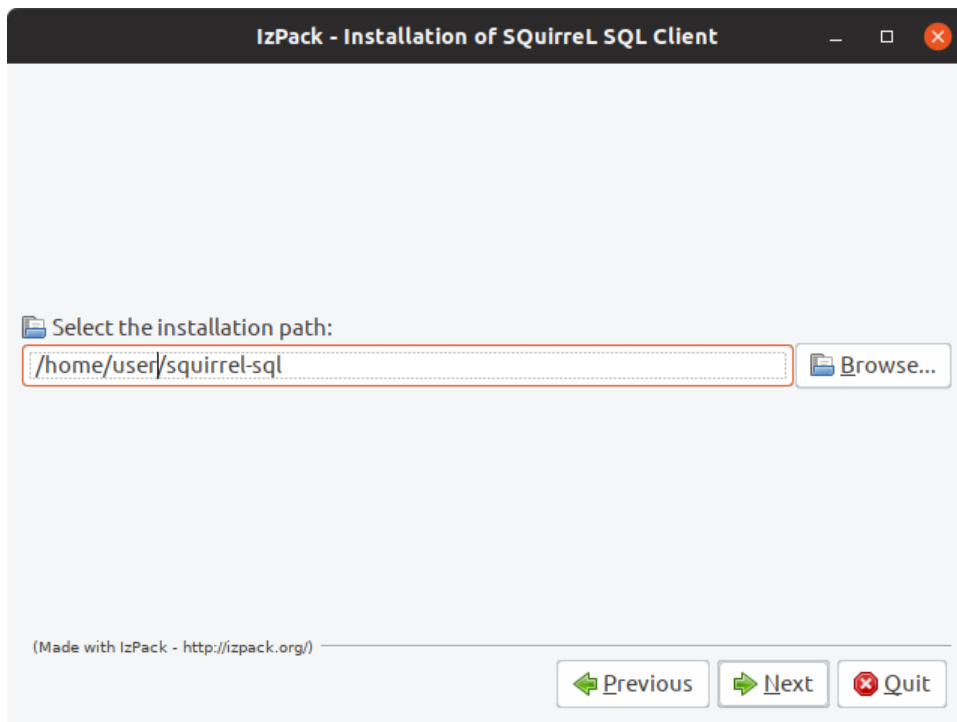
### 3.1. Linux

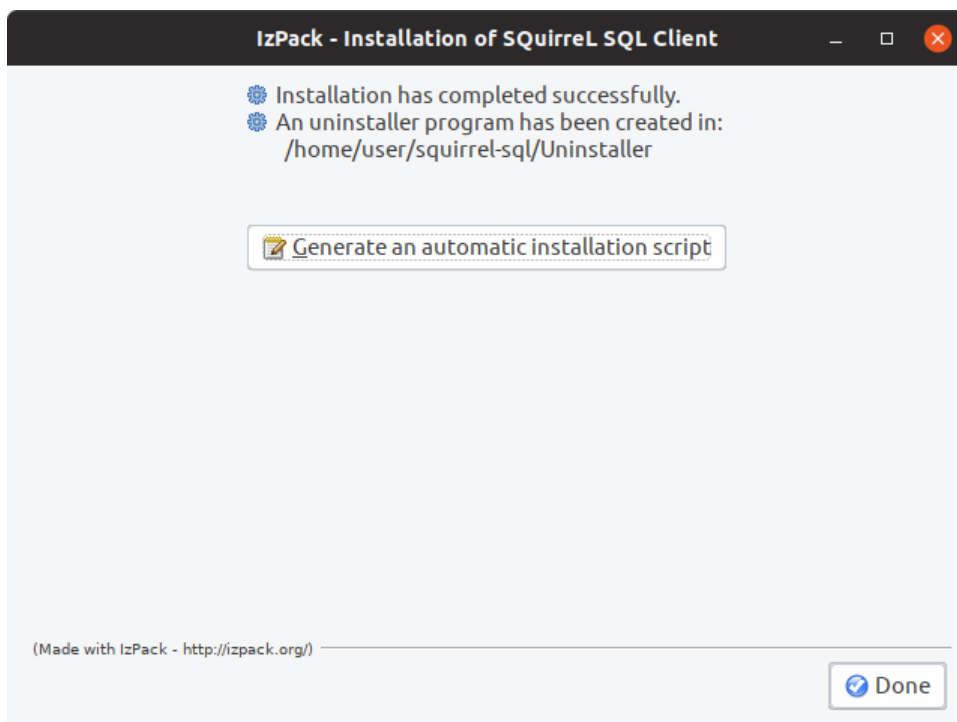
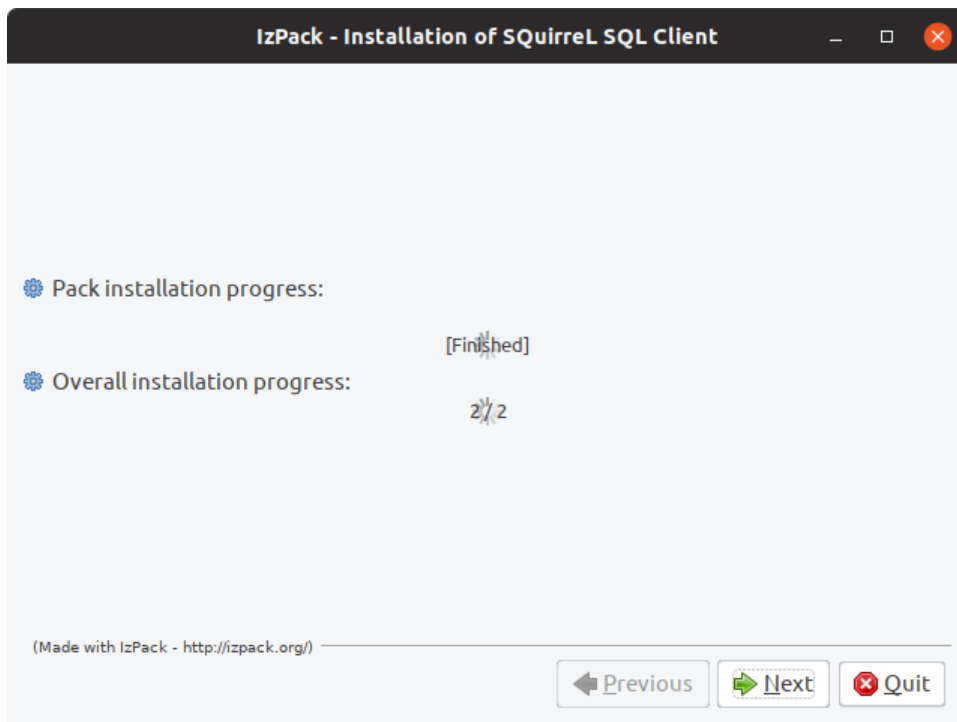
- Run the installer `.jar`:

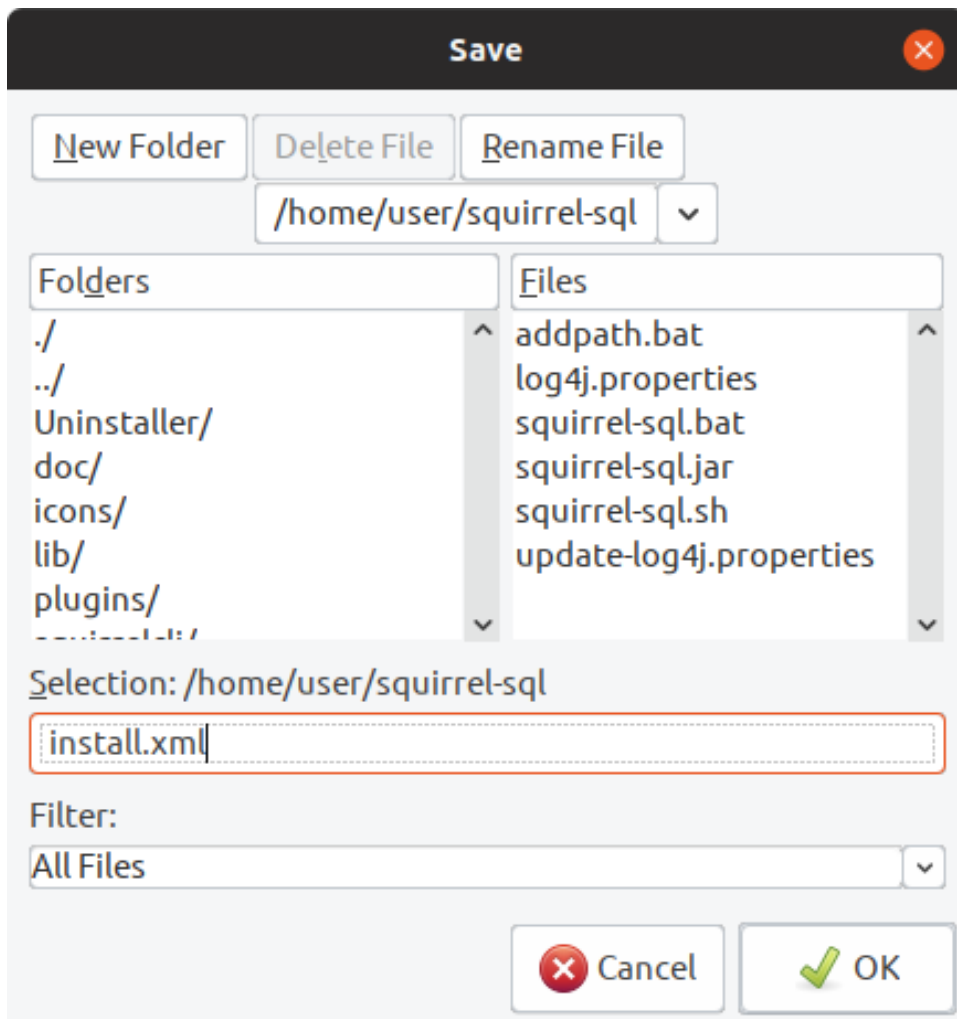
```
java -jar squirrel-sql-3.9.1-standard.jar
```

- Follow the installation guide:







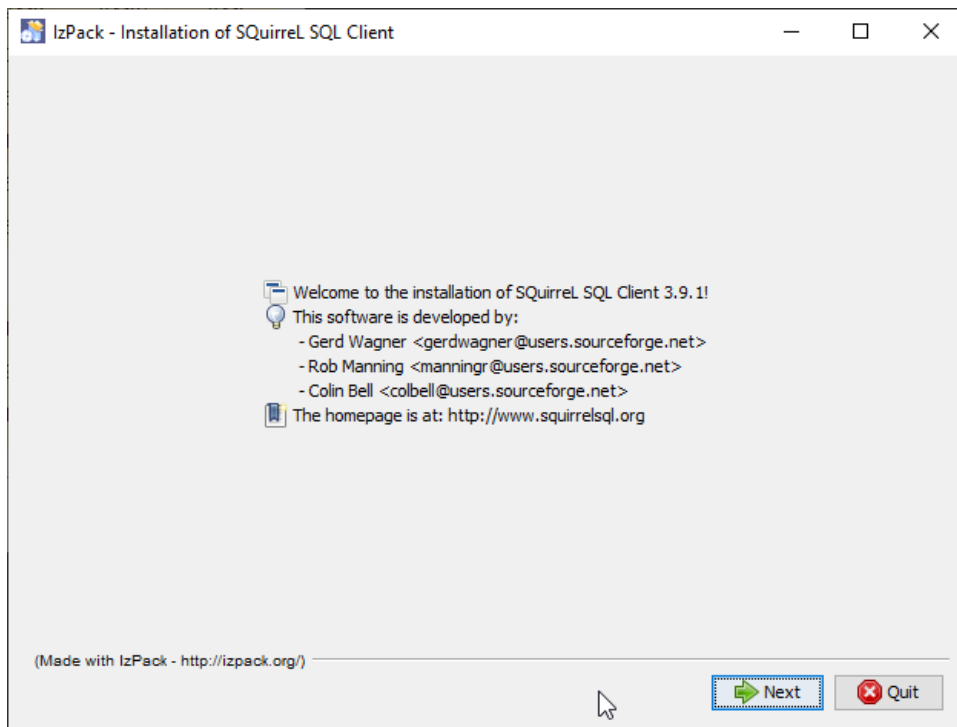


### 3.1.1. Windows

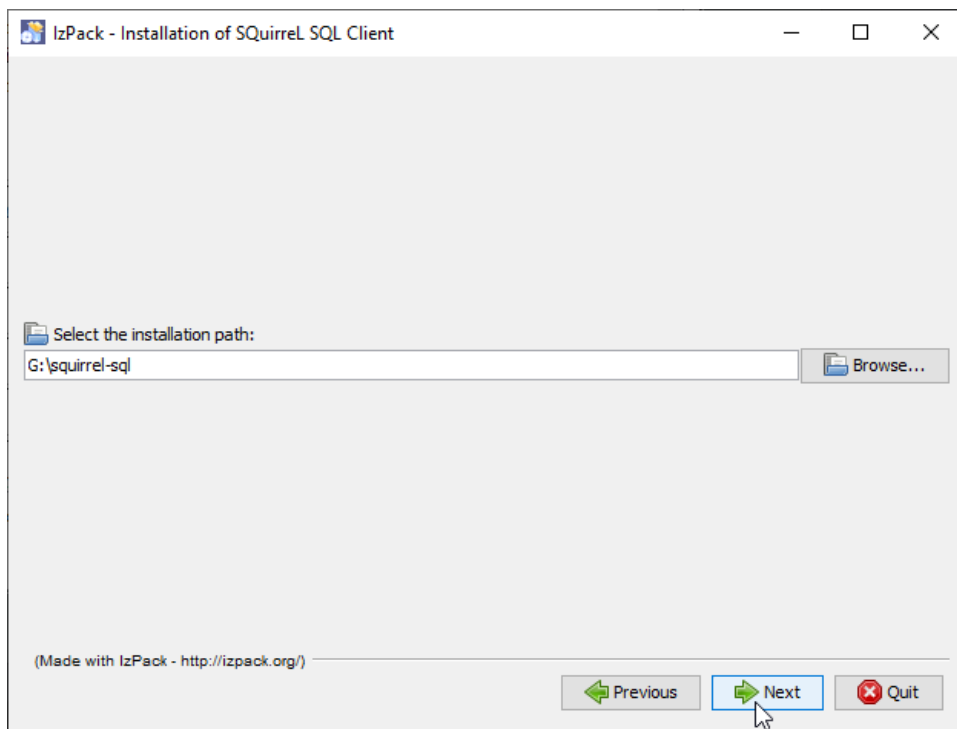
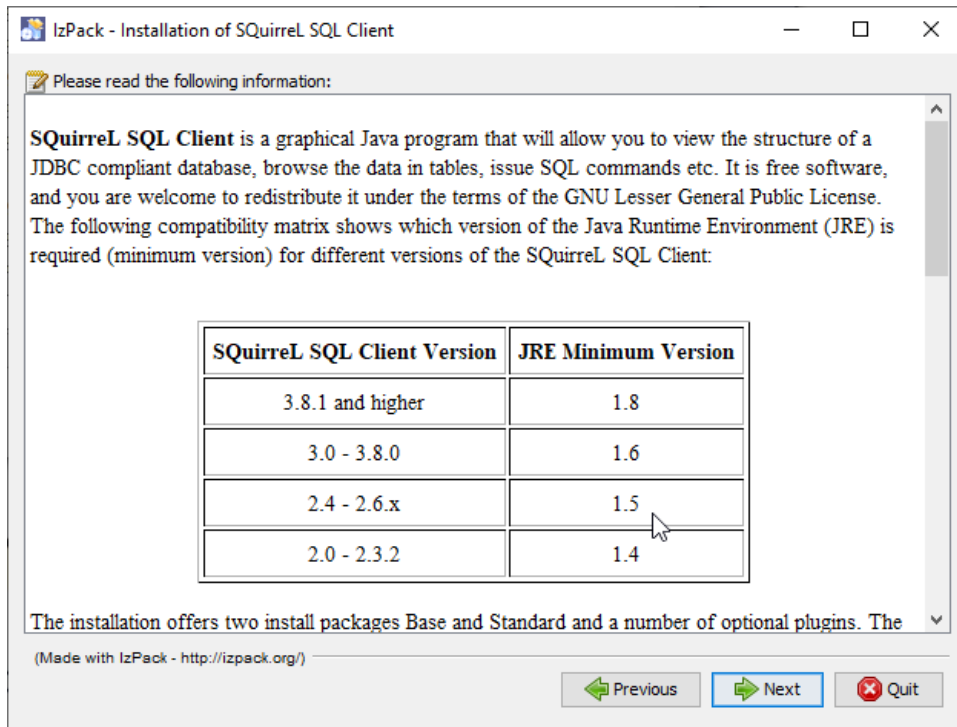
- Run the installer .jar:

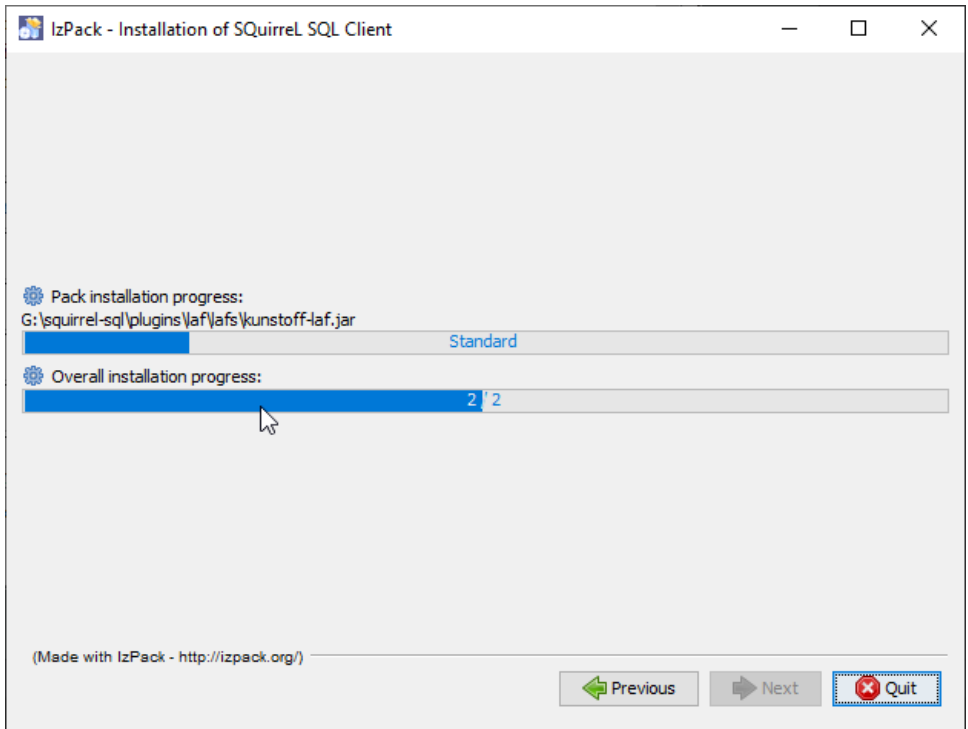
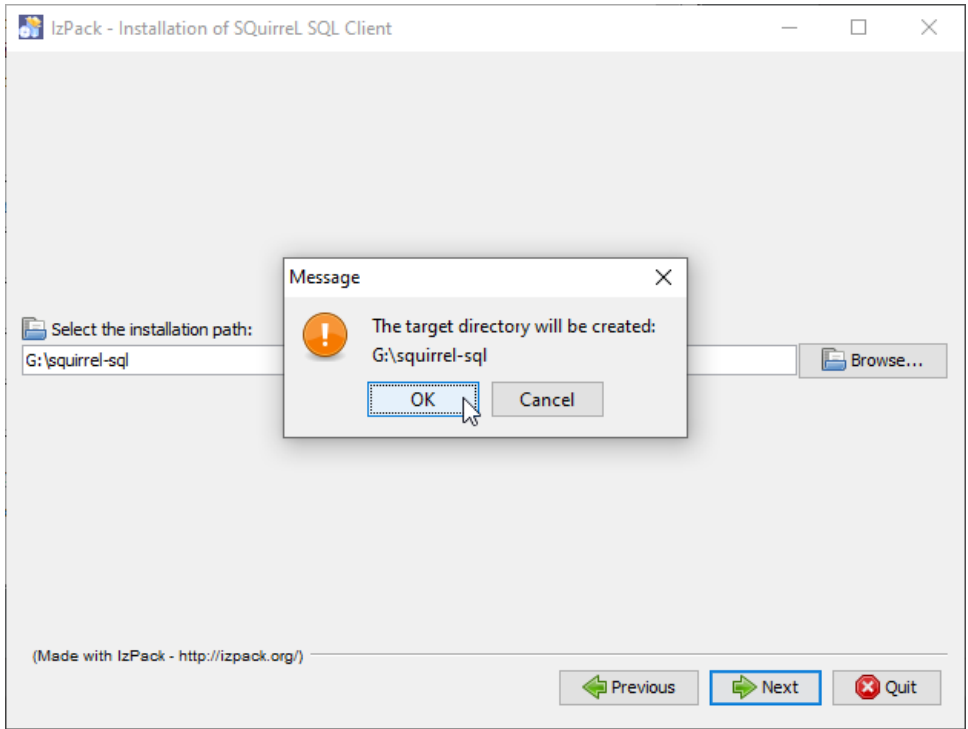
```
java -jar squirrel-sql-3.9.1-standard.jar
```

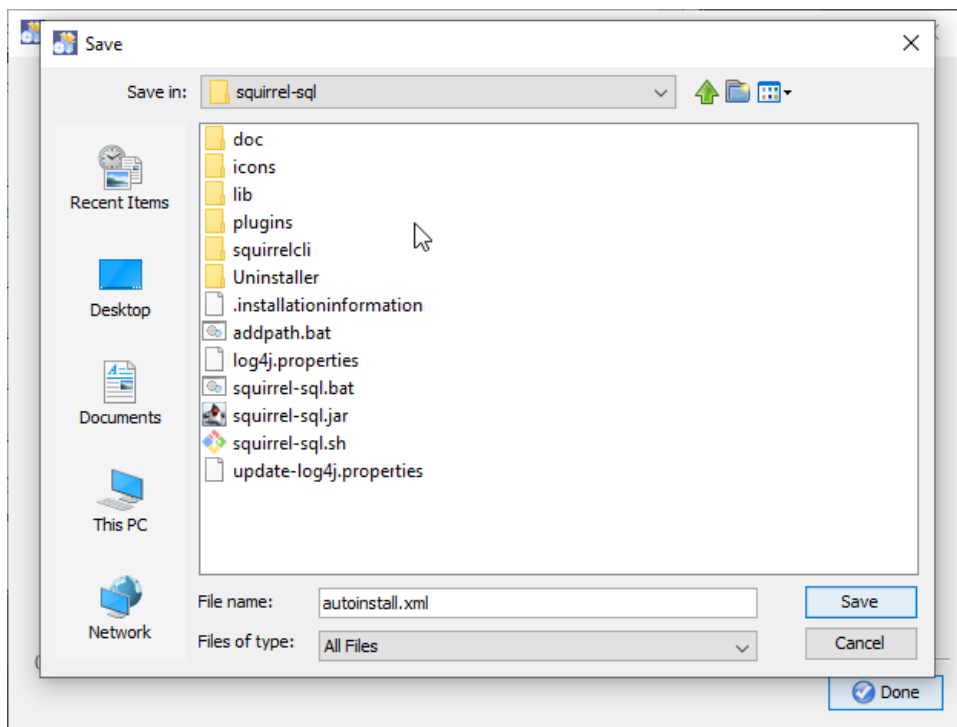
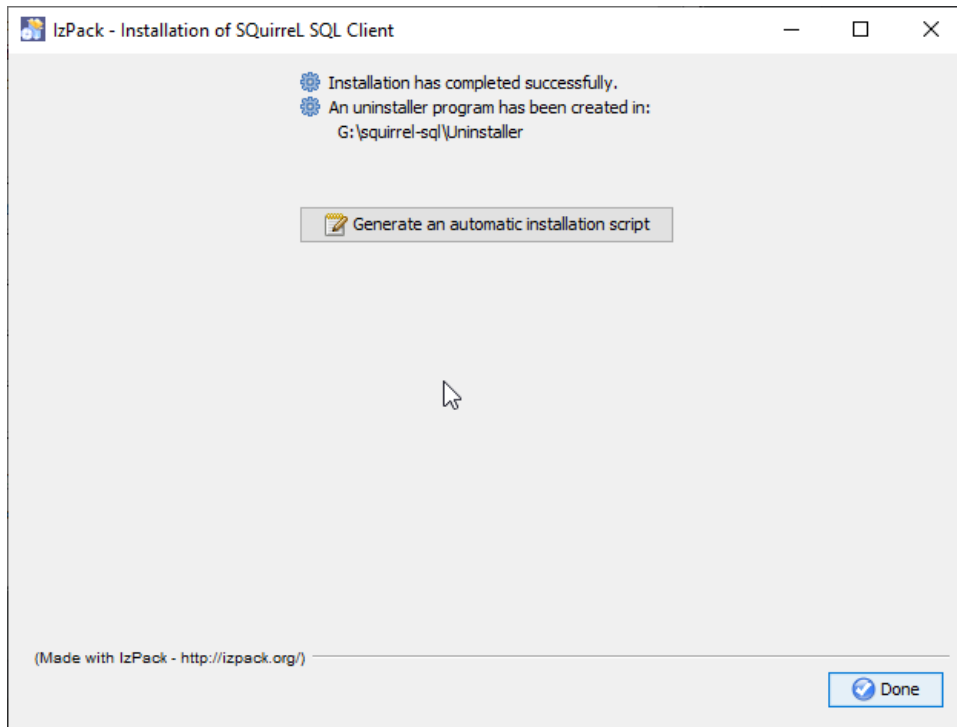
- Follow the installation guide:

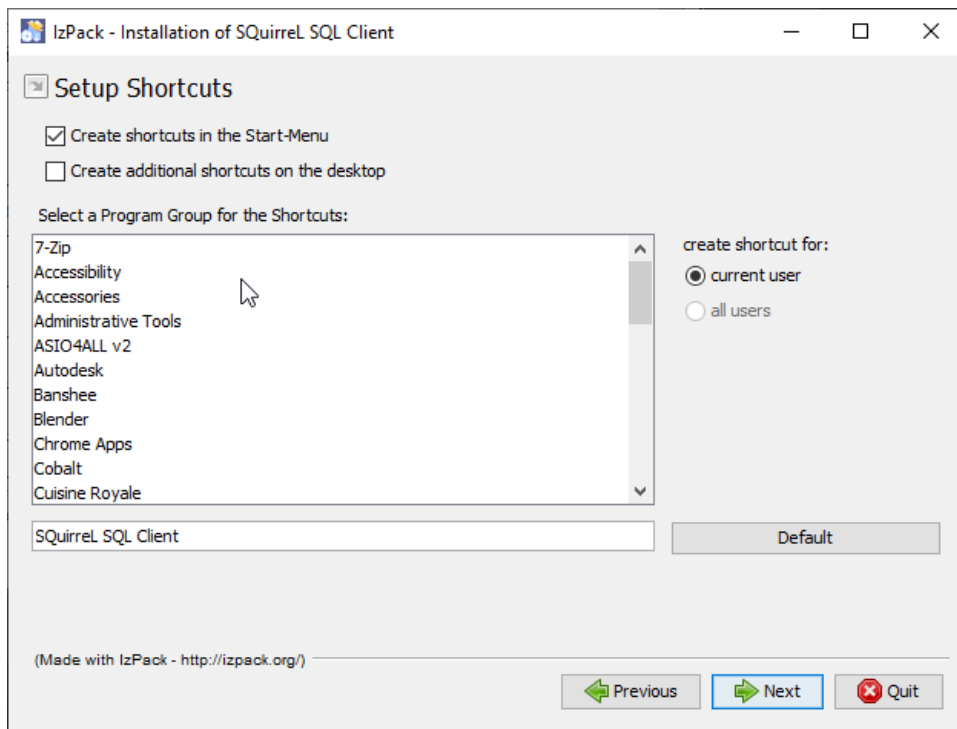












## 4. Run Client

To start the client, use the provided startup script in the installation directory.

### 4.1. Windows

In command line:

```
squirrel-sql.bat
```

## 5. Connection drivers

In order to connect to LeanXcale, you need to install the LeanXCale JDBC driver.

## 6. Download JDBC driver

The JDBC driver can be downloaded from:

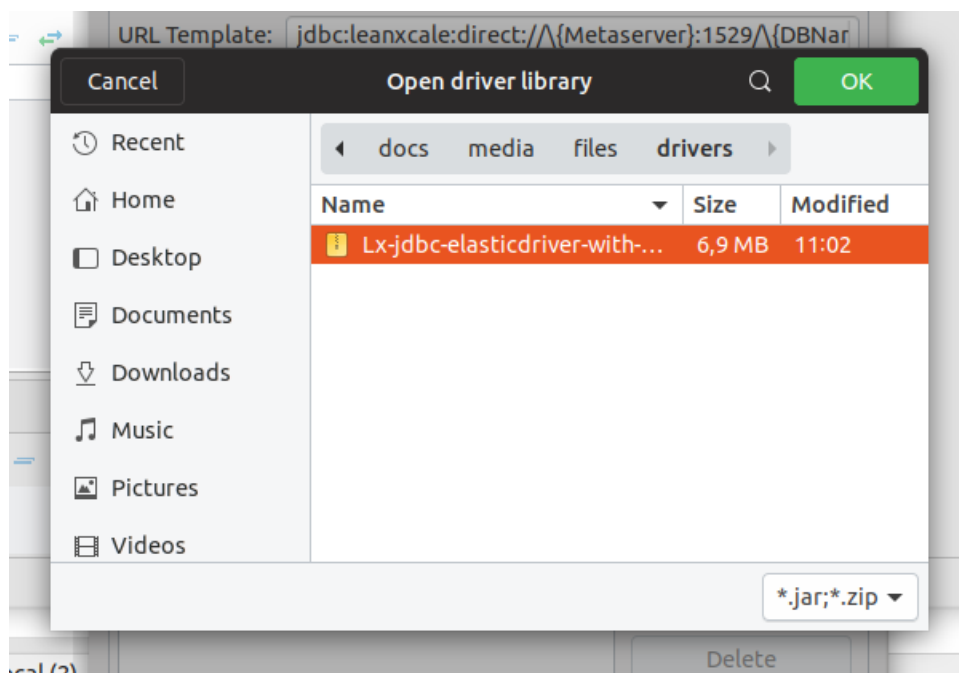
[Lx-jdbc-elasticdriver-with-dependencies.zip](#)

## 7. Install JDBC driver

The driver can be installed directly without extracting the zip file.

To install the JDBC driver:

- Open the Driver Manager
- Click **Add File**
- Browse to the downloaded zip file



- Select the file
- Click **OK**

**Edit Driver 'LeanXcale'**
□ ×

---

**Settings**

Driver Name\*:  Driver Type: Generic ▾

Class Name:

URL Template: jdbc:direct://{Metaserver}:1529/{DBName};create=true

Default Port:   Embedded  No authentication

---

**Description**

Category: LeanXcale ▾ ID:

Description:

---

**Libraries** | Connection properties | Adv. parameters

/data/code/lx/Documentation/docs/me

Add File

Add Folder

Add Artifact

Download/Update

Information

Delete

Classpath

Driver class: ▾

---

?
Reset to Defaults
Cancel
OK

- Add some required information:

- Driver Name: LeanXcale
- Driver Type: Generic
- Class Name: com.leanxcale.jdbc.ElasticDriver
- URL Template:

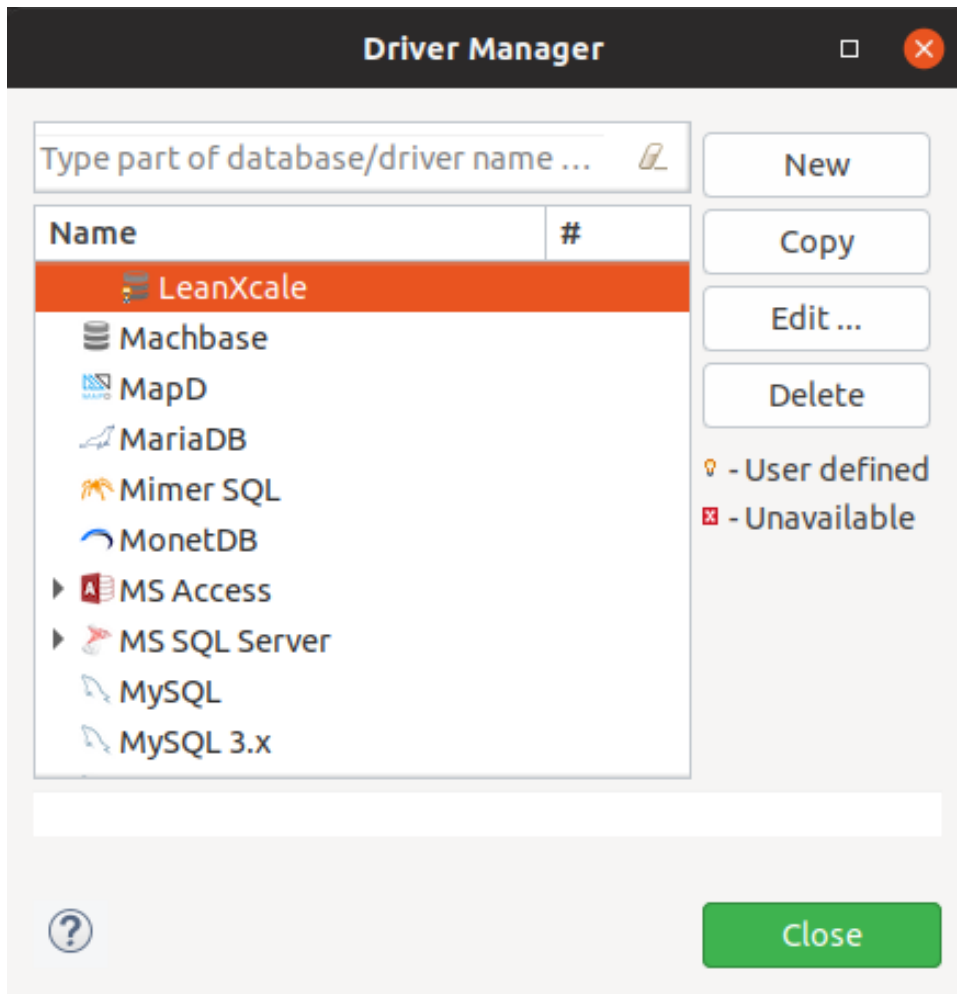
```
jdbc:leanxcale:direct://{host}:{port}/{database};create=true
```

- Category: LeanXcale
- Default Port: 1529



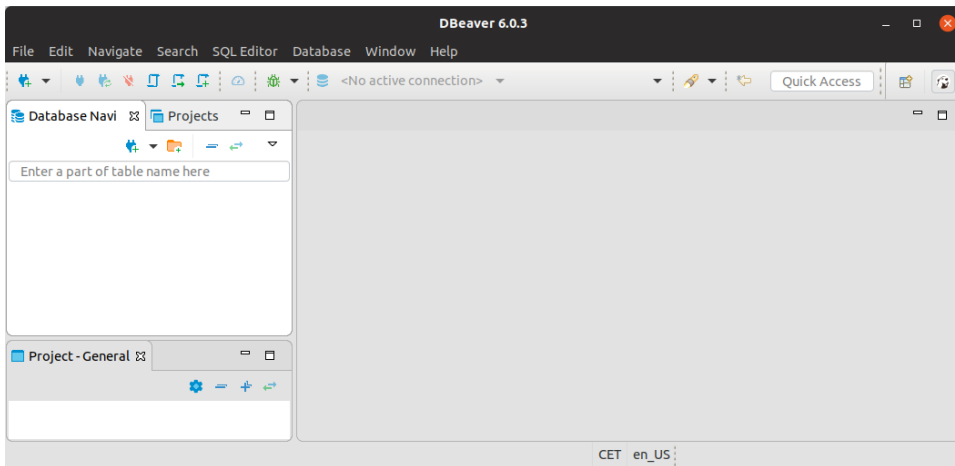
The parameter `create=true` is required to create the database.

- Click **OK**



- Click **Close**

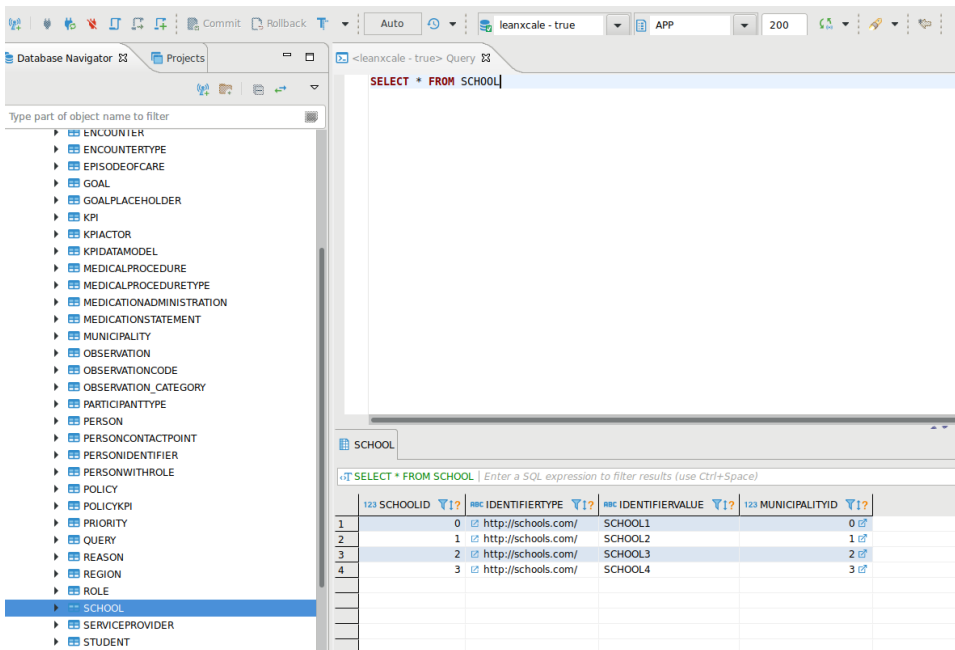
The driver is registered:



You can now set up the connection.

## 8. Connect to LeanXcale

After setting up the driver, you should be able to create a new connection to the datastore using the New Connection Wizard. When the connection is established, the user should be able to see the data tables and the write her own queries to retrieve data, as shown in the following figure.



Note that by using the `create=true` property in the connection URL, the database will be automatically created in the first connection. You may notice that first connection takes longer because of this reason.





The general format for the connection string is:

```
jdbc:sqlserver://[serverName[\instanceName][:portNumber]
][;property=value[;property=value]]===
```

## 9. Setting up a connection