

LEAN  CALE

**SquirrelSQL Client - Windows**

# Table of Contents

- 1. Introduction ..... 1
  - 1.1. License ..... 1
  - 1.2. Version ..... 1
- 2. Download ..... 1
  - 2.1. Plugins ..... 1
- 3. Installation ..... 2
  - 3.1. Linux ..... 2
- 4. Run Client ..... 10
  - 4.1. Windows ..... 11
- 5. Connection drivers ..... 11
- 6. Download JDBC driver ..... 11
- 7. Install JDBC driver ..... 11
- 8. Connect to LeanXcale ..... 13
- 9. Setting up a connection ..... 13

# 1. Introduction

The Squirrel SQL Client uses JDBC to allow users to explore and interact with databases via a JDBC driver.

It provides an editor that offers code completion and syntax highlighting for standard SQL.

Plugin's can be added to modify the application's behavior and to add database-specific functionality.

Squirrel SQL is written in Java with Swing UI, and so should run on any platform with a JVM.

## 1.1. License

Squirrel SQL Client is free as open source software that is distributed under the GNU Lesser General Public License. For more information, see <http://www.gnu.org/licenses/licenses.html#LGPL>.

## 1.2. Version

In this guide, we are using **version 3.9.1** of Squirrel SQL Client. If you wish to use a different version, please pay attention to when the version number is used in the instructions.

# 2. Download

*Table 1. Download options*

OS	Download Link
Windows	<a href="http://sourceforge.net/projects/squirrel-sql/files/1-stable/3.9.1/squirrel-sql-3.9.1-MACOSX-install.jar/download">http://sourceforge.net/projects/squirrel-sql/files/1-stable/3.9.1/squirrel-sql-3.9.1-MACOSX-install.jar/download</a>

## 2.1. Plugins

A list of plugins is available at <http://squirrel-sql.sourceforge.net/index.php?page=plugins>

## 3. Installation

Generally, installation is done by running the installer from the command line with a `java -jar squirrel-sql-<version>-install.jar` type command. For details, see below.

To install Squirrel SQL:

- Open a console/command line window
- Decide which directory you want to install into
- Make sure that you have write access to that directory

### 3.1. Linux

- Run the installer .jar:

```
java -jar squirrel-sql-3.9.1-standard.jar
```

- Follow the installation guide:



IzPack - Installation of Squirrel SQL Client

Please read the following information:

**Squirrel SQL Client** is a graphical Java program that will allow you to view the structure of a JDBC compliant database, browse the data in tables, issue SQL commands etc. It is free software, and you are welcome to redistribute it under the terms of the GNU Lesser General Public License.  
The following compatibility matrix shows which version of the Java Runtime Environment (JRE) is required (minimum version) for different versions of the Squirrel SQL Client:

Squirrel SQL Client Version	JRE Minimum Version
3.8.1 and higher	1.8
3.0 - 3.8.0	1.6
2.4 - 2.6.x	1.5
2.0 - 2.3.2	1.4

(Made with IzPack - <http://izpack.org/>)

Previous Next Quit

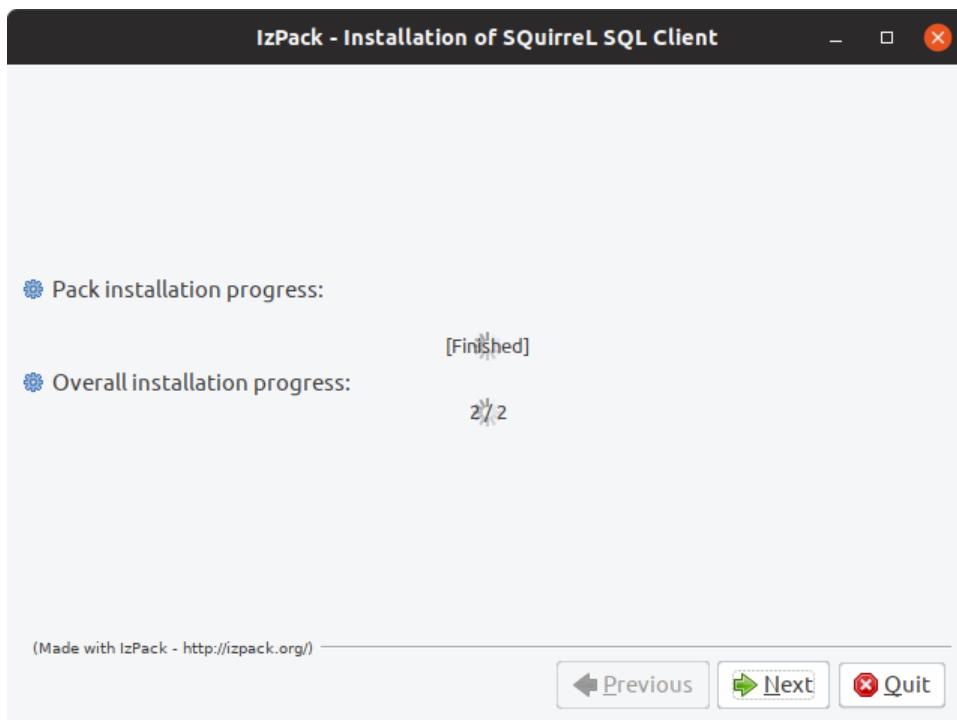
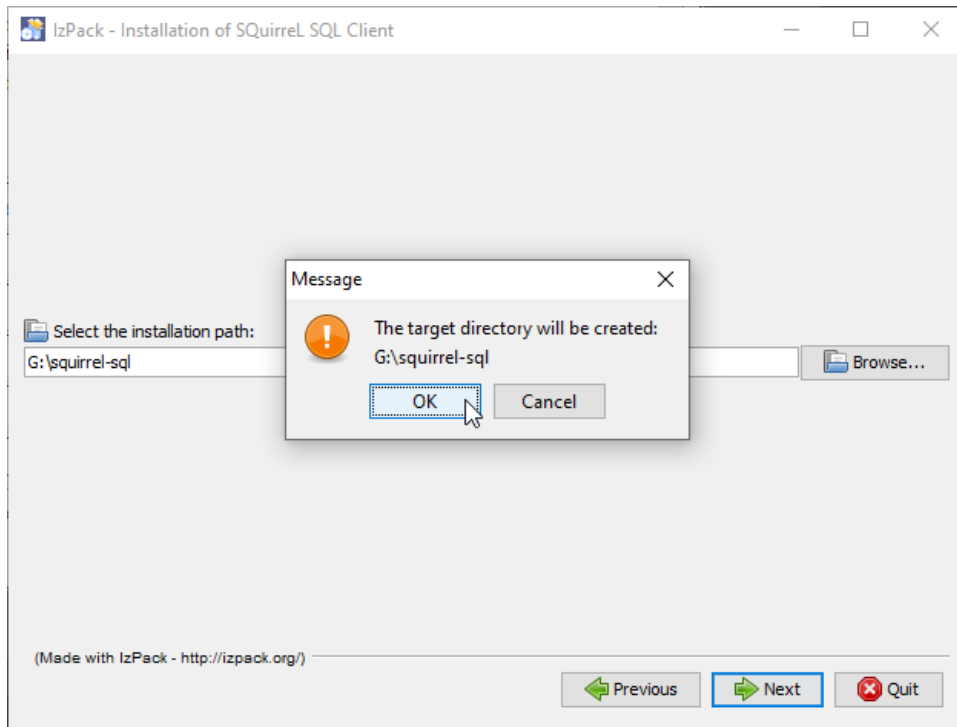
IzPack - Installation of Squirrel SQL Client

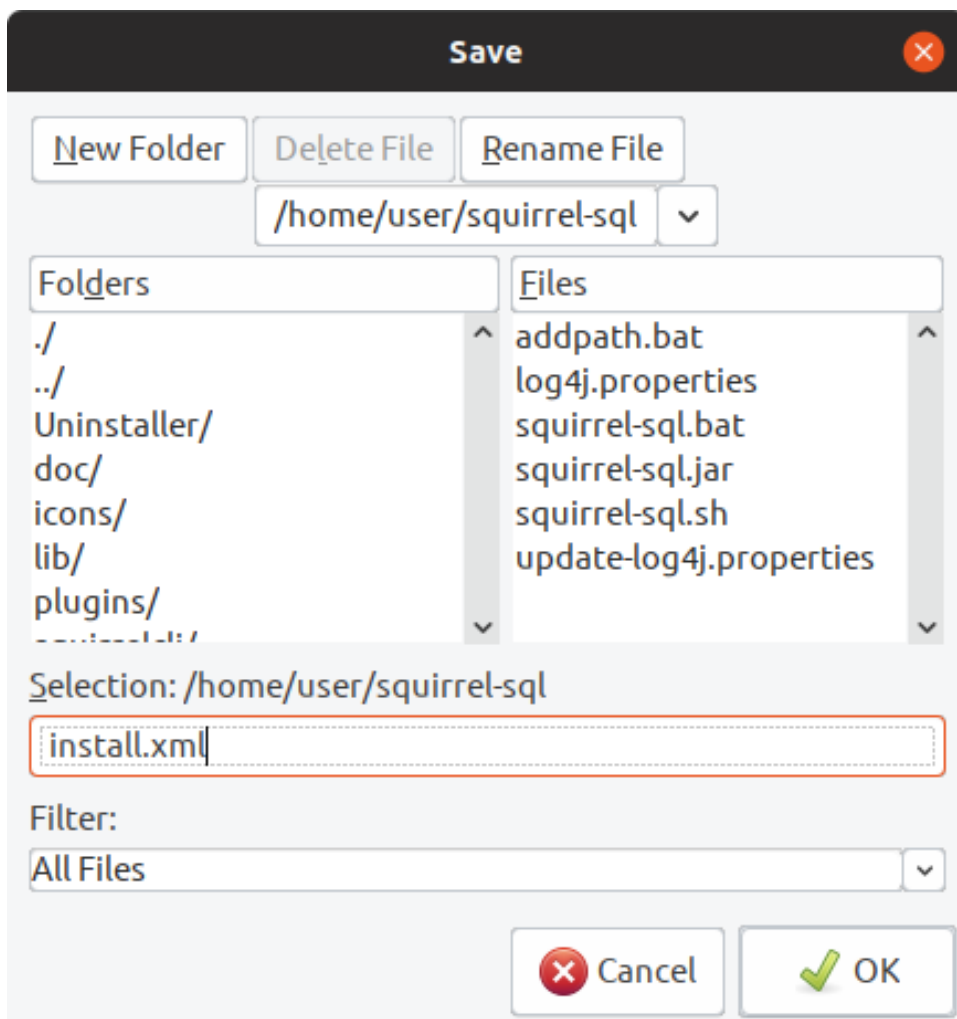
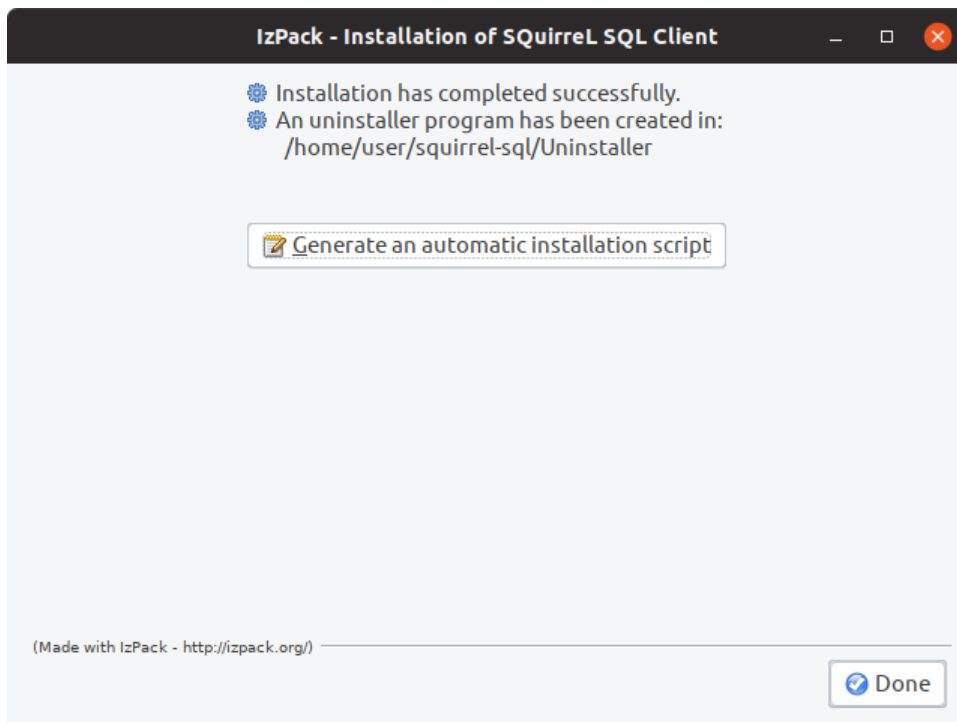
Select the installation path:

Browse...

(Made with IzPack - <http://izpack.org/>)

Previous Next Quit







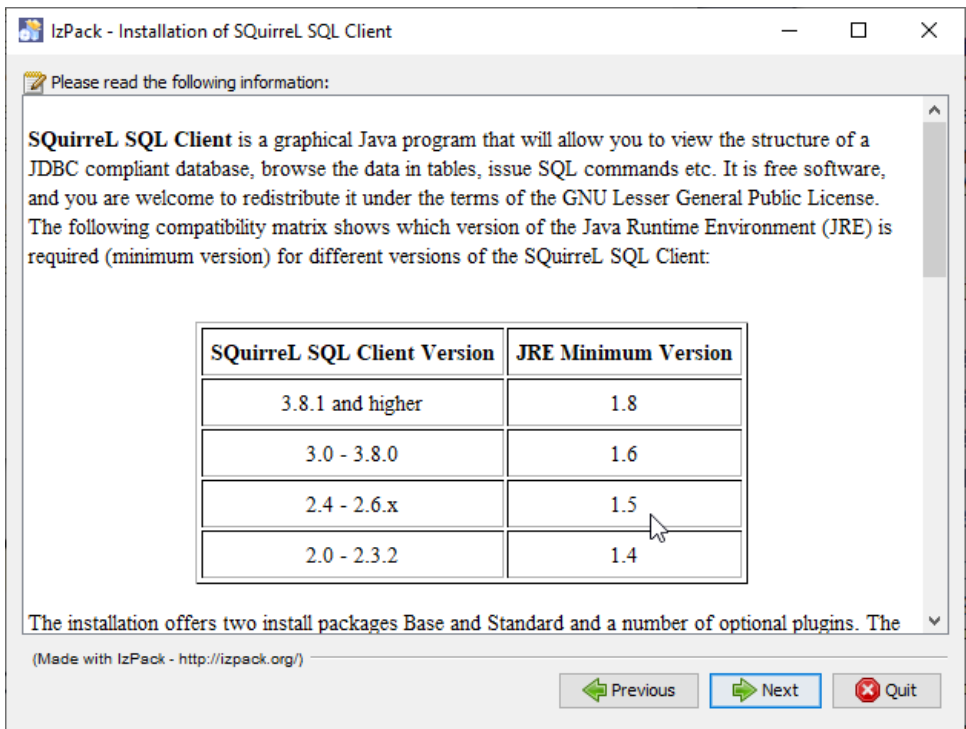
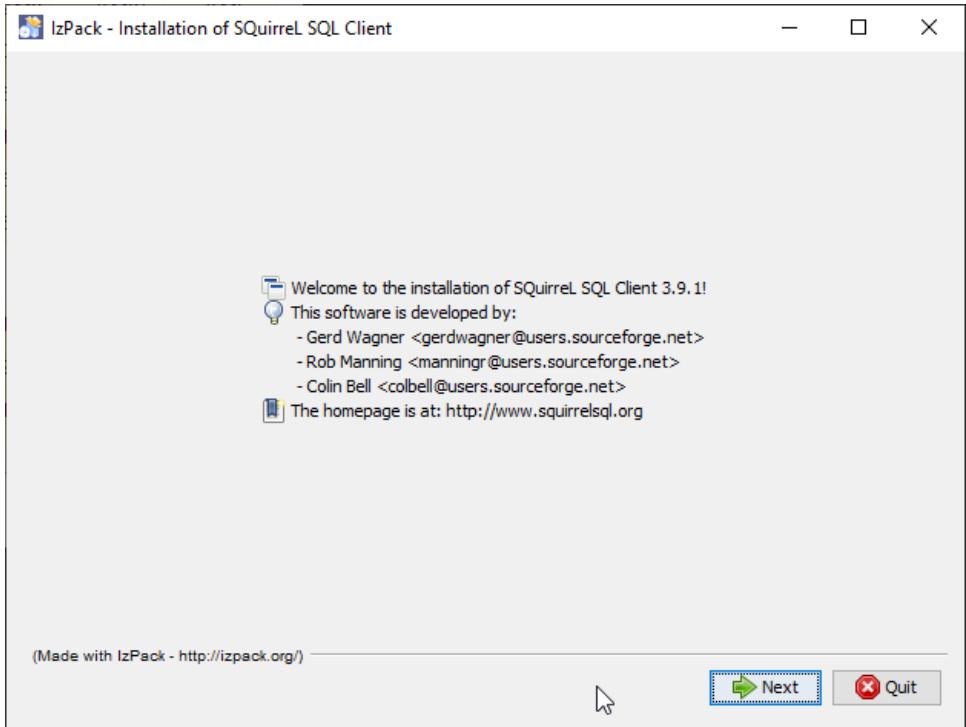
### 3.1.1. Windows

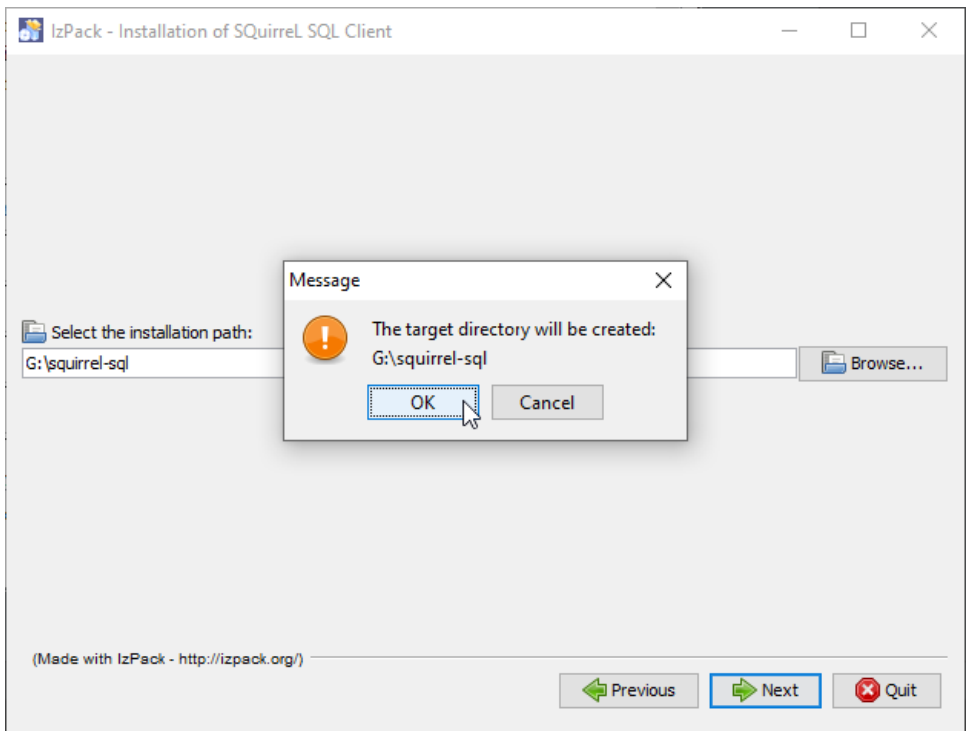
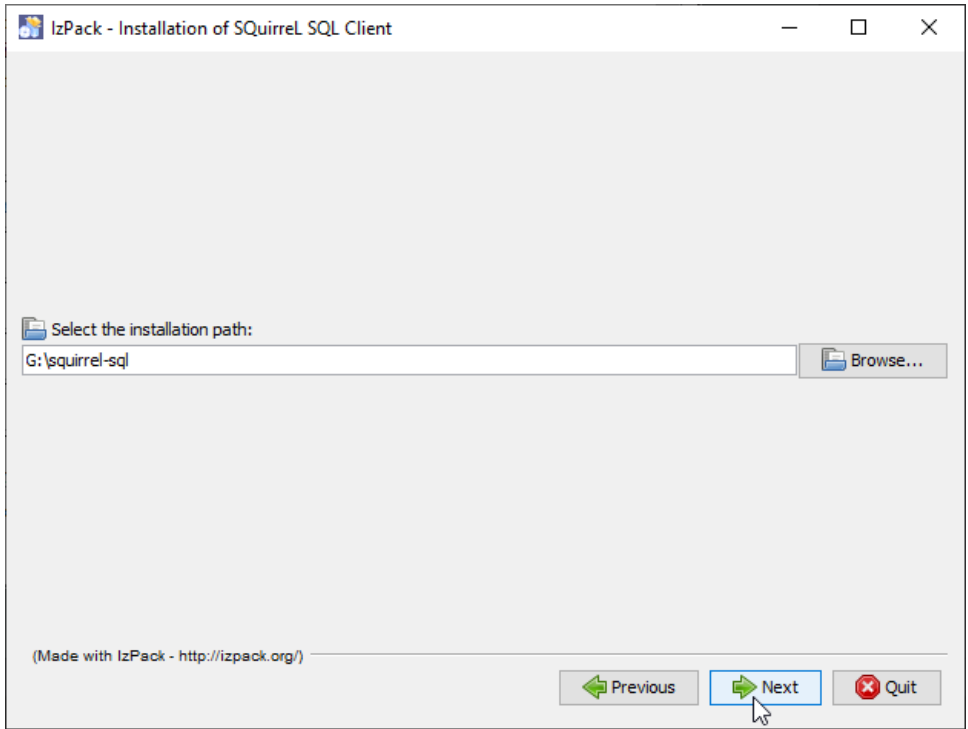
- Run the installer .jar:

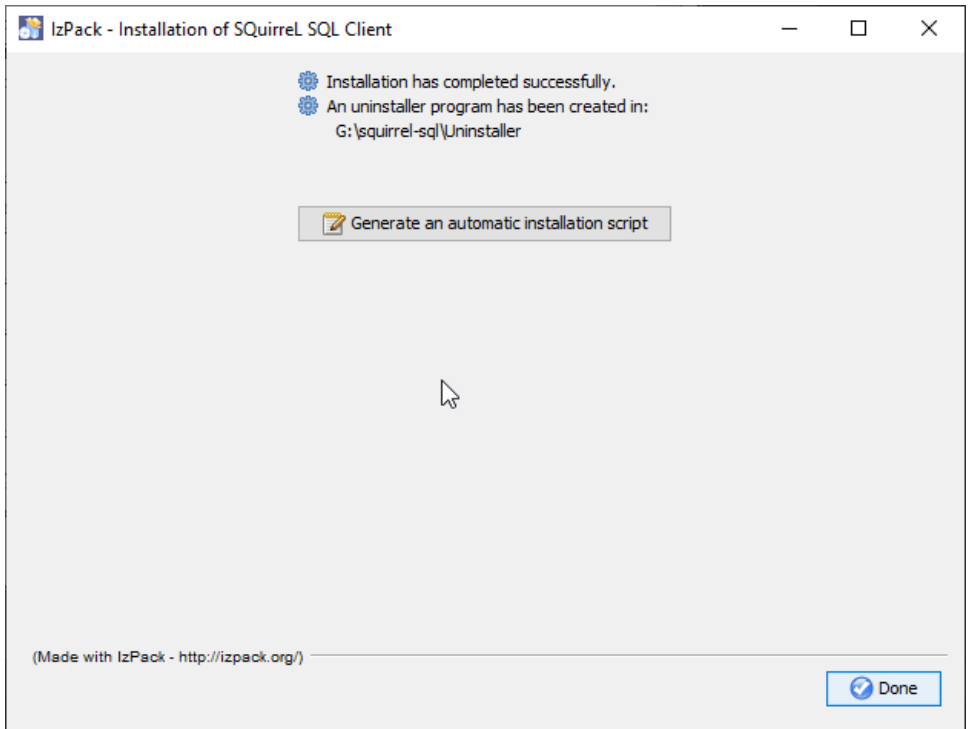
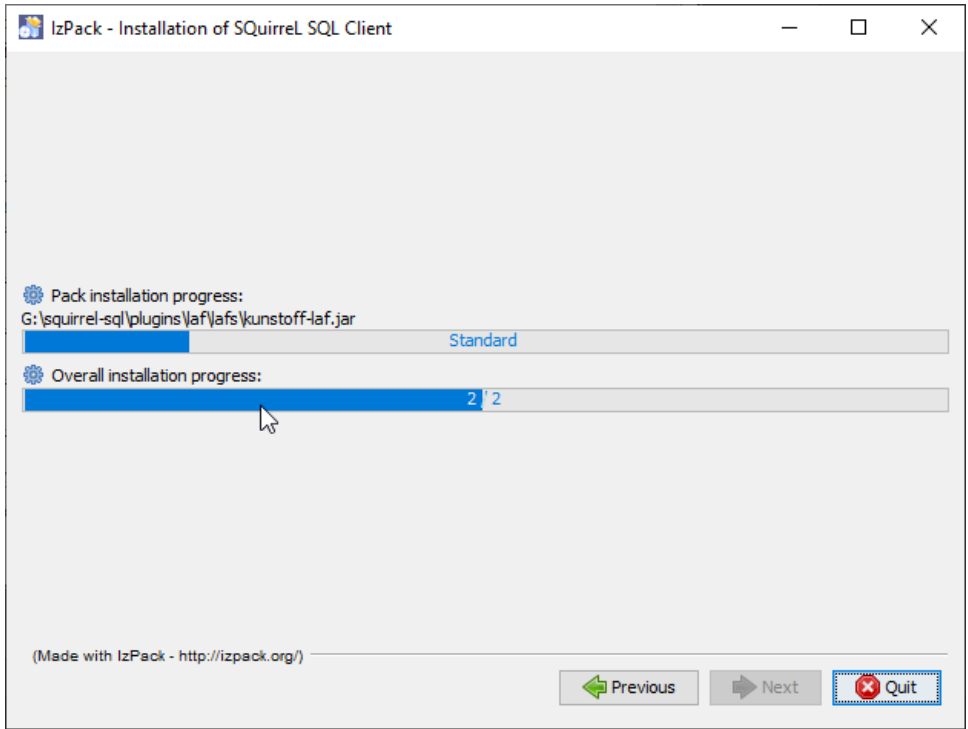
```
java -jar squirrel-sql-3.9.1-standard.jar
```

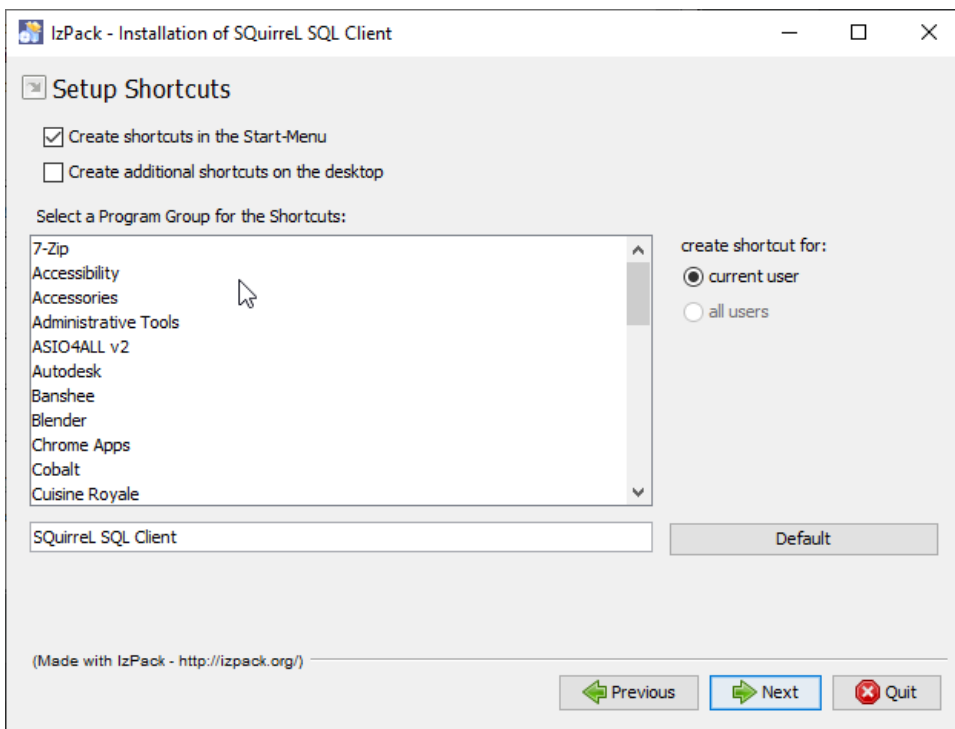
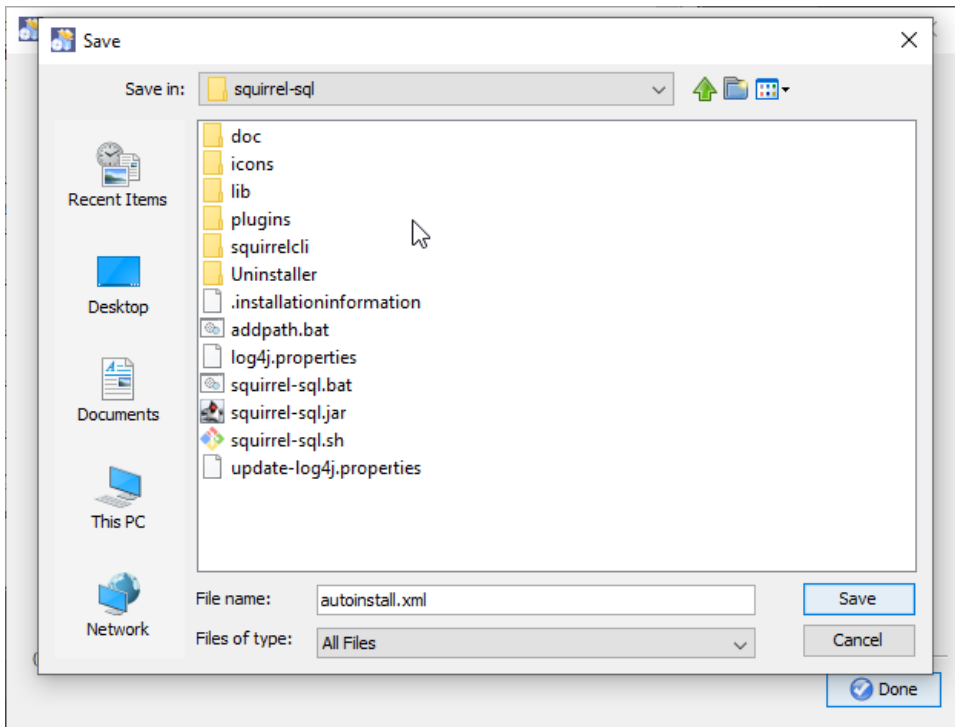
- Follow the installation guide:











## 4. Run Client

To start the client, use the provided startup script in the installation directory.

## 4.1. Windows

In command line:

```
squirrel-sql.bat
```

## 5. Connection drivers

In order to connect to LeanXcale, you need to install the JDBC driver `.jar` files.



You do need to install both the `elasticdriver` **and** `l18n` files.

## 6. Download JDBC driver

The JDBC driver can be downloaded from:

[Lx-jdbc-elasticdriver-with-dependencies.zip](#)

## 7. Install JDBC driver

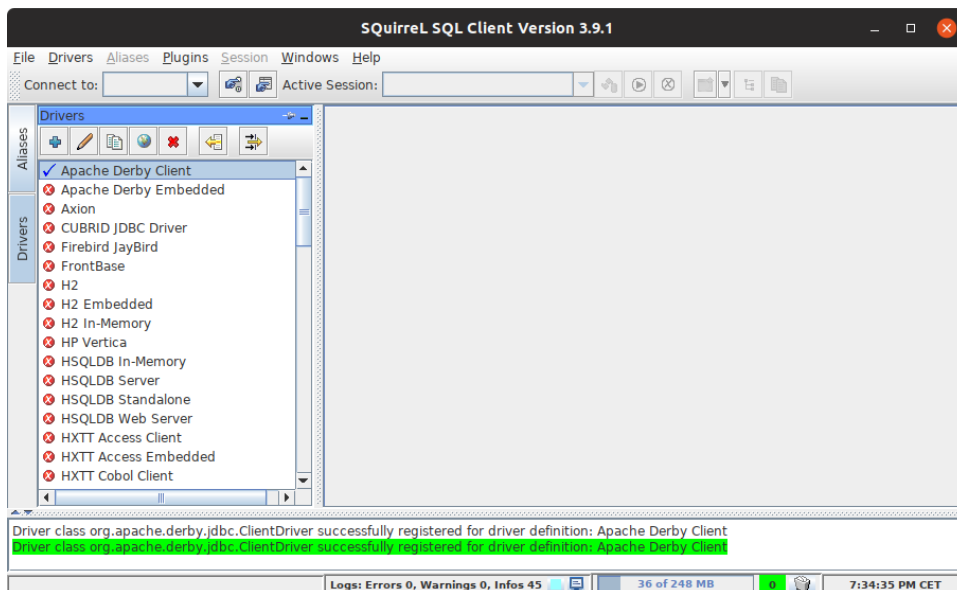
To install the JDBC driver:

- Expand/extract the downloaded archive
- Copy the `.jar` file from the expanded
- Find the Squirrel SQL install directory
- Open the `lib` directory
- Paste the `.jar` file into the `lib` directory



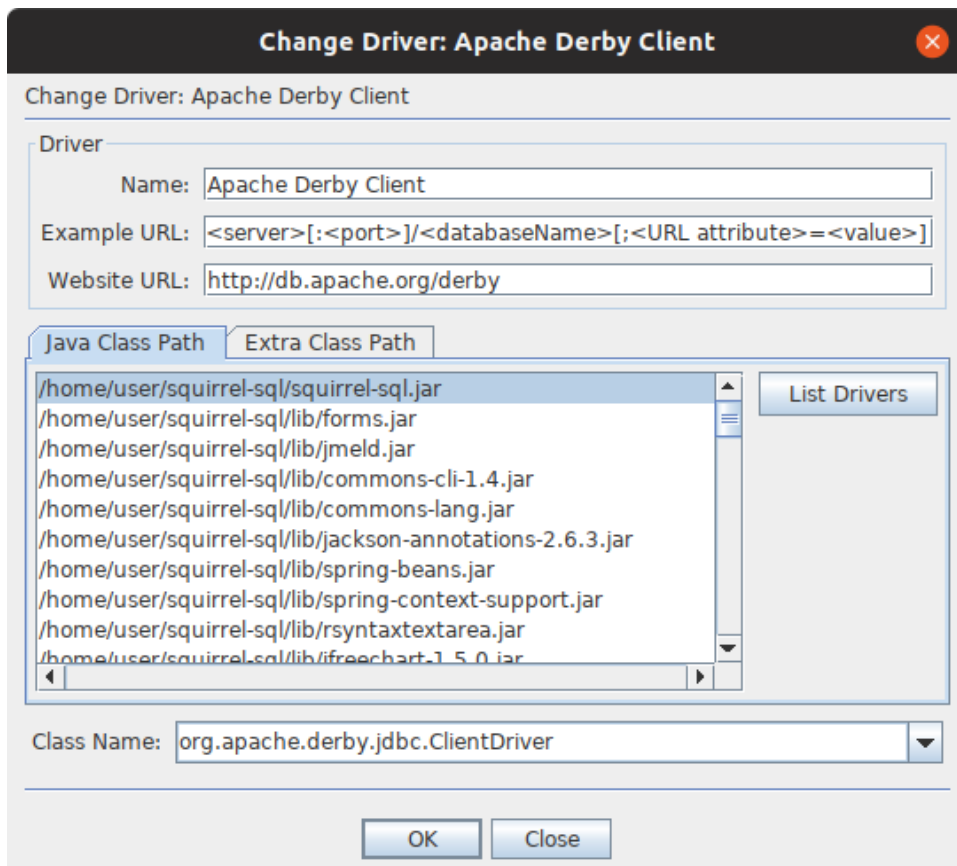
When the driver has been placed in the `lib` directory, it is shown as active in the Squirrel SQL interface (a blue tick mark).

- Open Squirrel SQL
- Click **Drivers**



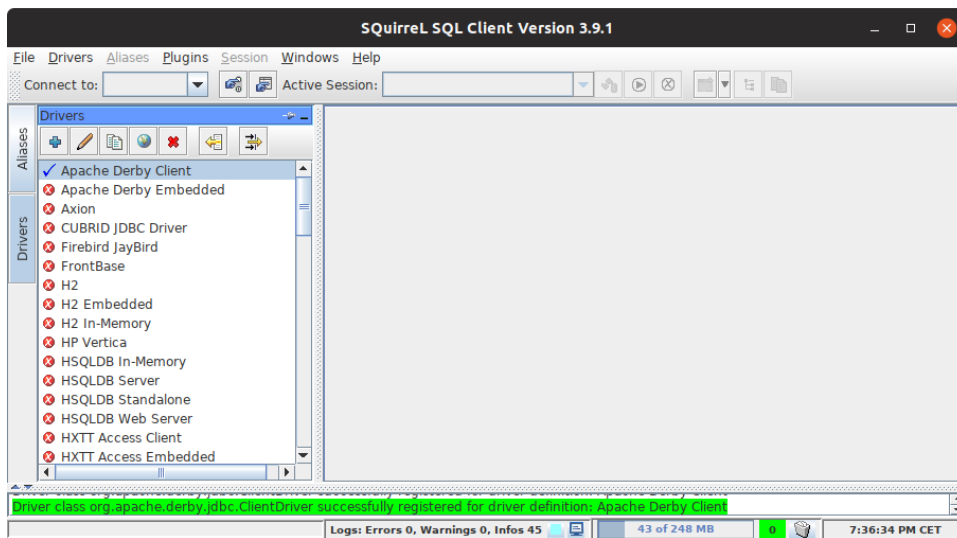
- Select the Apache Derby Client
- Double click the entry

The configuration shows the driver options:



- Click **OK**

The driver is registered:



You can now set up the connection.

## 8. Connect to LeanXcale

In Squirrel SQL, a database connection is called an **Alias** and are set up in the **Alias** tab.



The general format for the connection string is:

```
jdbc:sqlserver://[serverName[\instanceName]][:portNumber]
][;property=value[;property=value]]====
```

## 9. Setting up a connection