

LEAN  CALE

**SquirrelSQL Client - OS X**

# Table of Contents

- 1. Introduction ..... 1
  - 1.1. License ..... 1
  - 1.2. Version ..... 1
- 2. Download ..... 1
  - 2.1. Plugins ..... 1
- 3. Installation ..... 2
  - 3.1. OS X ..... 2
- 4. Run Client ..... 6
  - 4.1. OS X ..... 6
- 5. Connection drivers ..... 6
- 6. Download JDBC driver ..... 6
- 7. Install JDBC driver ..... 7
- 8. Connect to LeanXcale ..... 9
- 9. Setting up a connection ..... 9

# 1. Introduction

The Squirrel SQL Client uses JDBC to allow users to explore and interact with databases via a JDBC driver.

It provides an editor that offers code completion and syntax highlighting for standard SQL.

Plugin's can be added to modify the application's behavior and to add database-specific functionality.

Squirrel SQL is written in Java with Swing UI, and so should run on any platform with a JVM.

## 1.1. License

Squirrel SQL Client is free as open source software that is distributed under the GNU Lesser General Public License. For more information, see <http://www.gnu.org/licenses/licenses.html#LGPL>.

## 1.2. Version

In this guide, we are using **version 3.9.1** of Squirrel SQL Client. If you wish to use a different version, please pay attention to when the version number is used in the instructions.

# 2. Download

*Table 1. Download options*

OS	Download Link
OS X	<a href="http://sourceforge.net/projects/squirrel-sql/files/1-stable/3.9.1/squirrel-sql-3.9.1-MACOSX-install.jar/download">http://sourceforge.net/projects/squirrel-sql/files/1-stable/3.9.1/squirrel-sql-3.9.1-MACOSX-install.jar/download</a>

## 2.1. Plugins

A list of plugins is available at <http://squirrel-sql.sourceforge.net/index.php?page=plugins>

## 3. Installation

Generally, installation is done by running the installer from the command line with a `java -jar squirrel-sql-<version>-install.jar` type command. For details, see below.

To install Squirrel SQL:

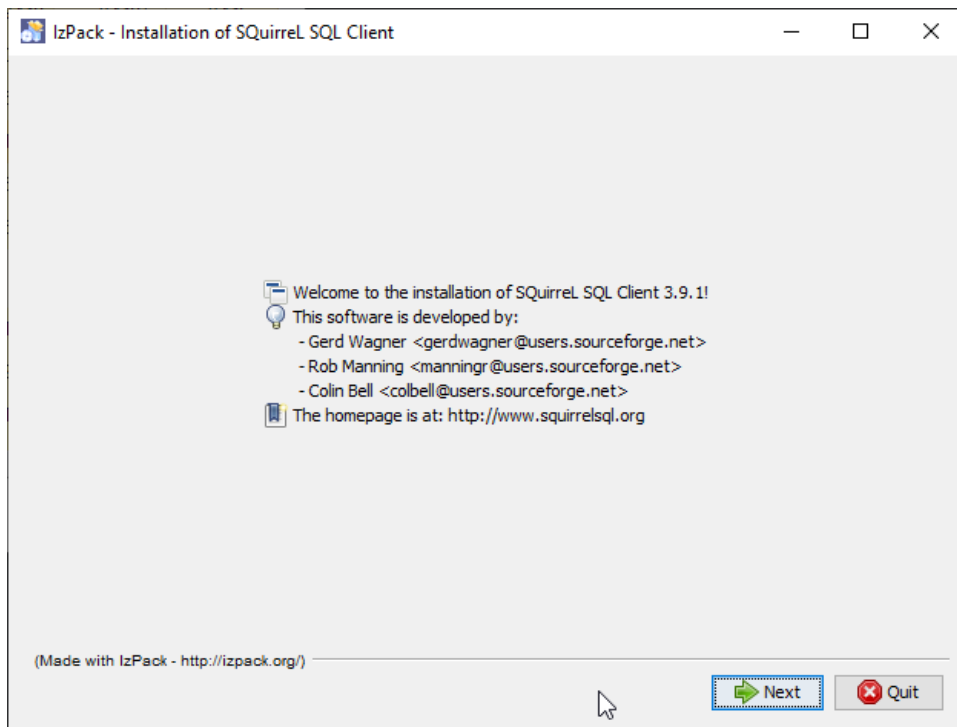
- Open a console/command line window
- Decide which directory you want to install into
- Make sure that you have write access to that directory

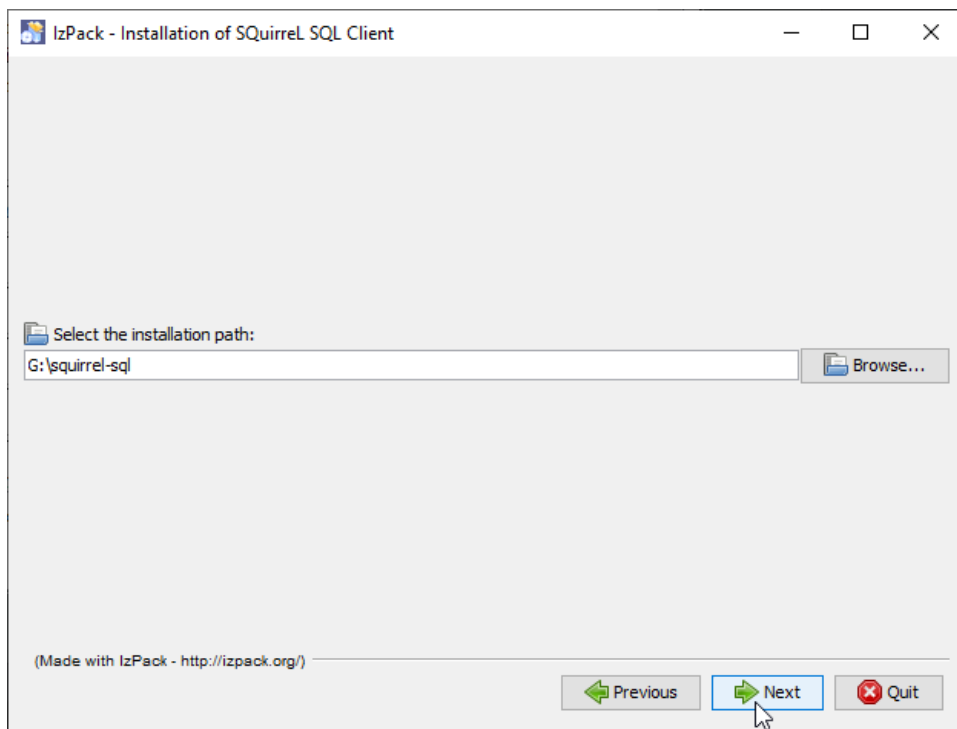
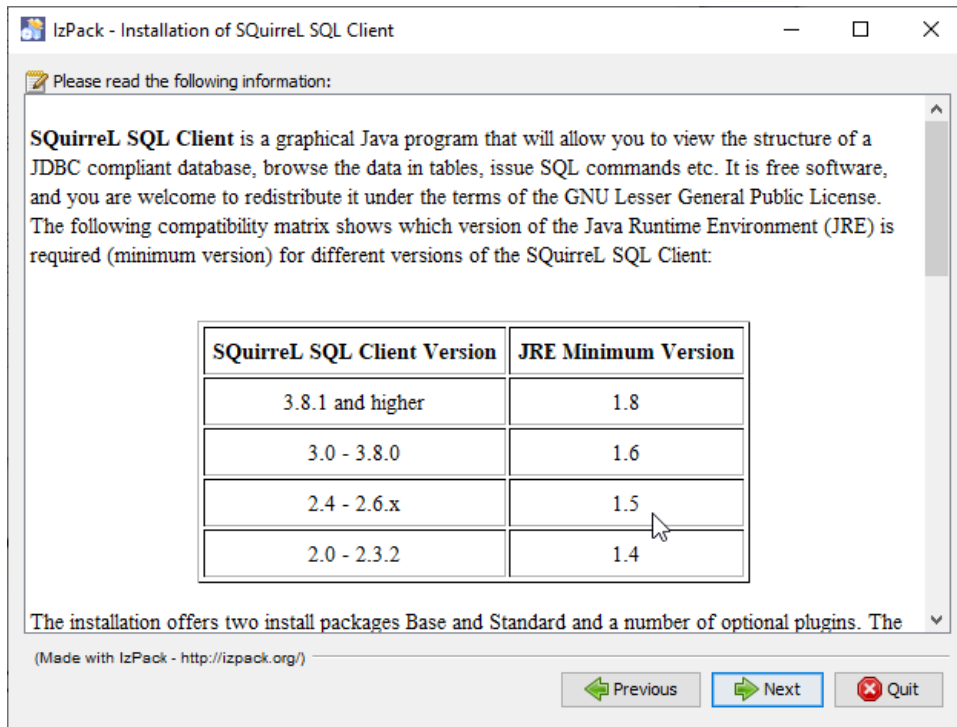
### 3.1. OS X

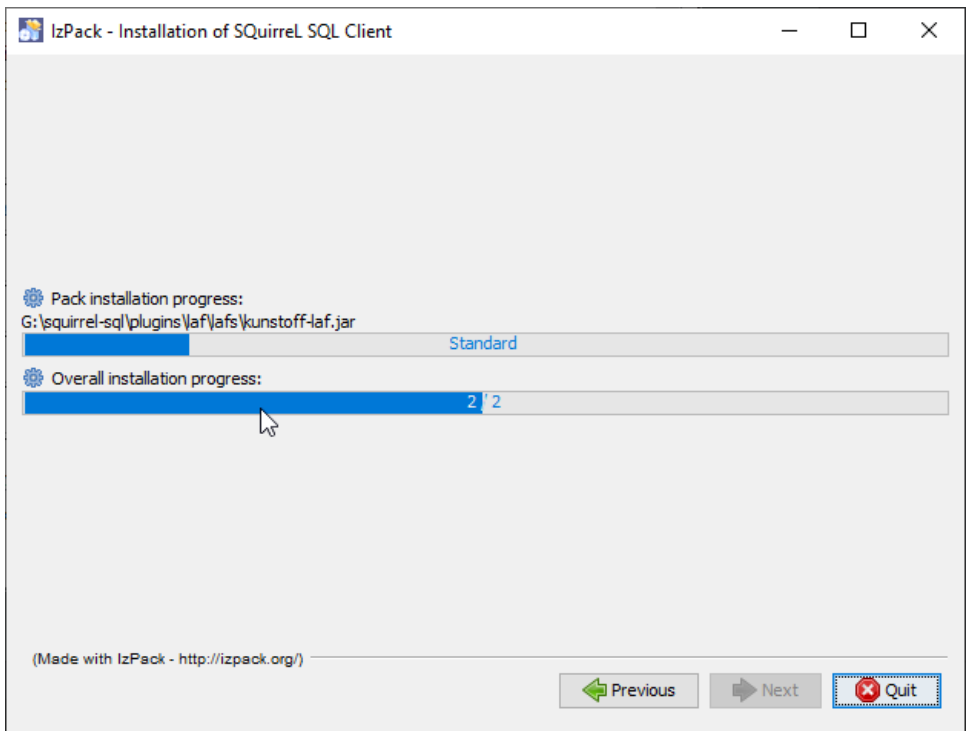
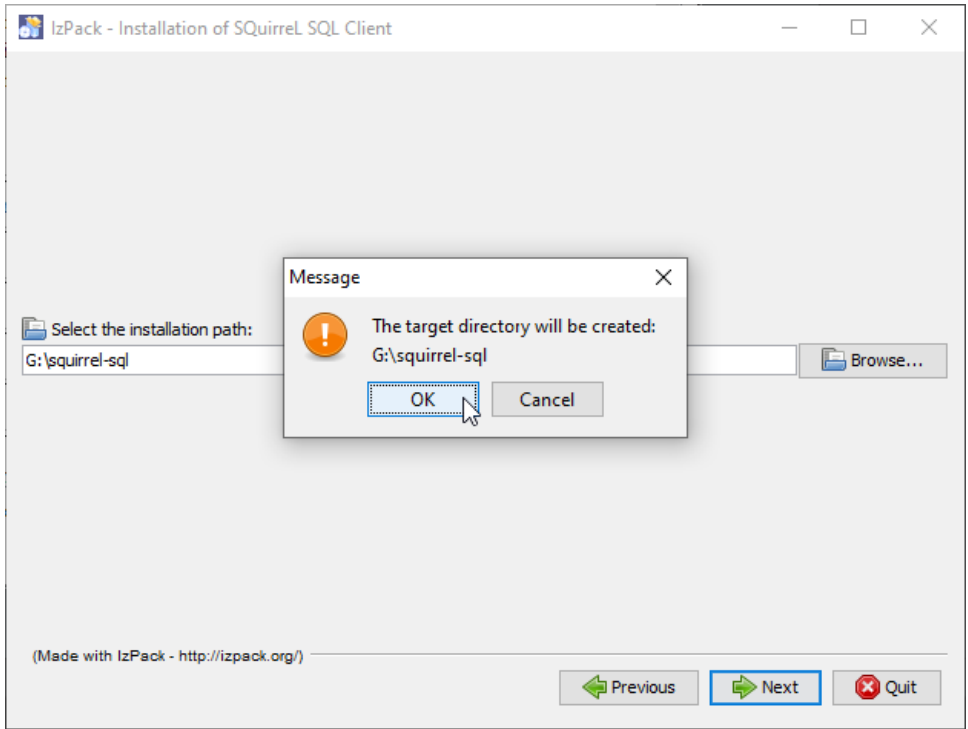
- Run the installer .jar:

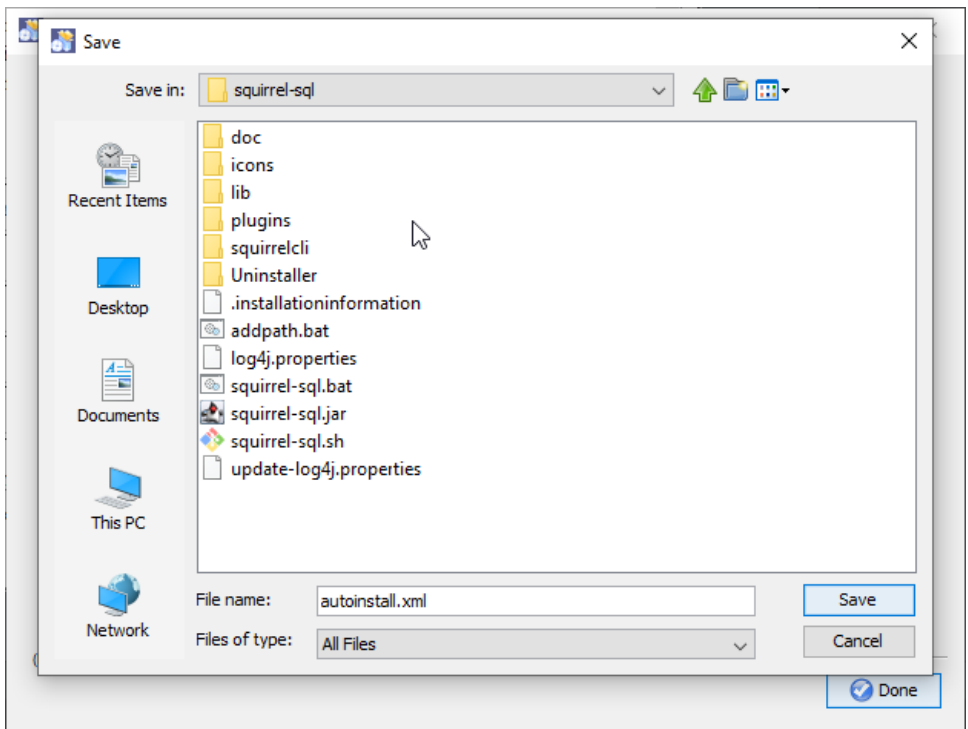
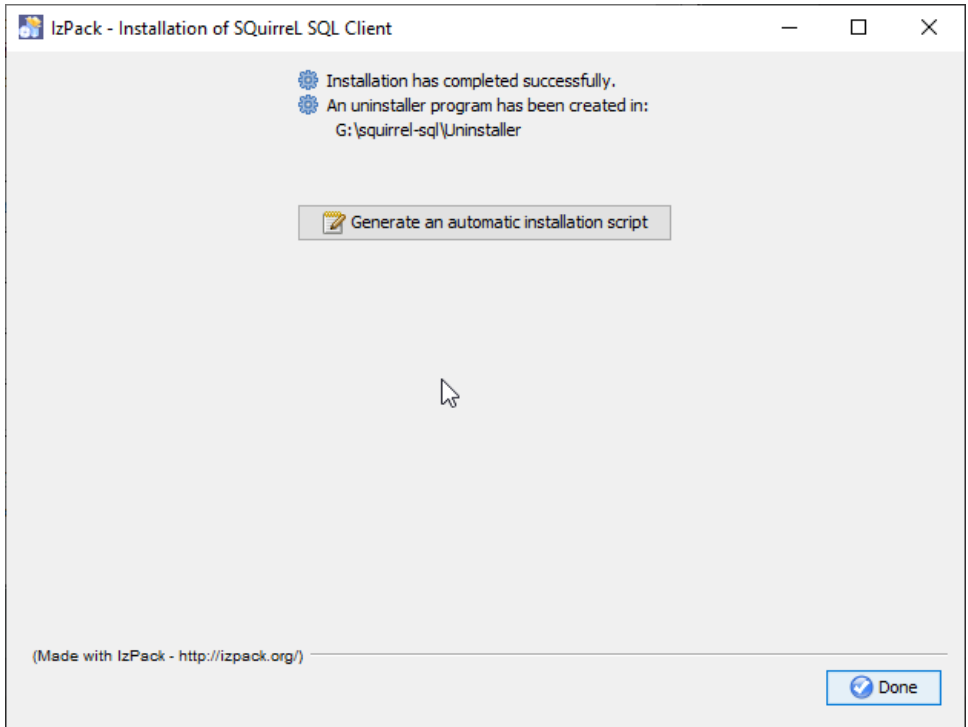
```
java -jar squirrel-sql-3.9.1-MACOSX-install.jar
```

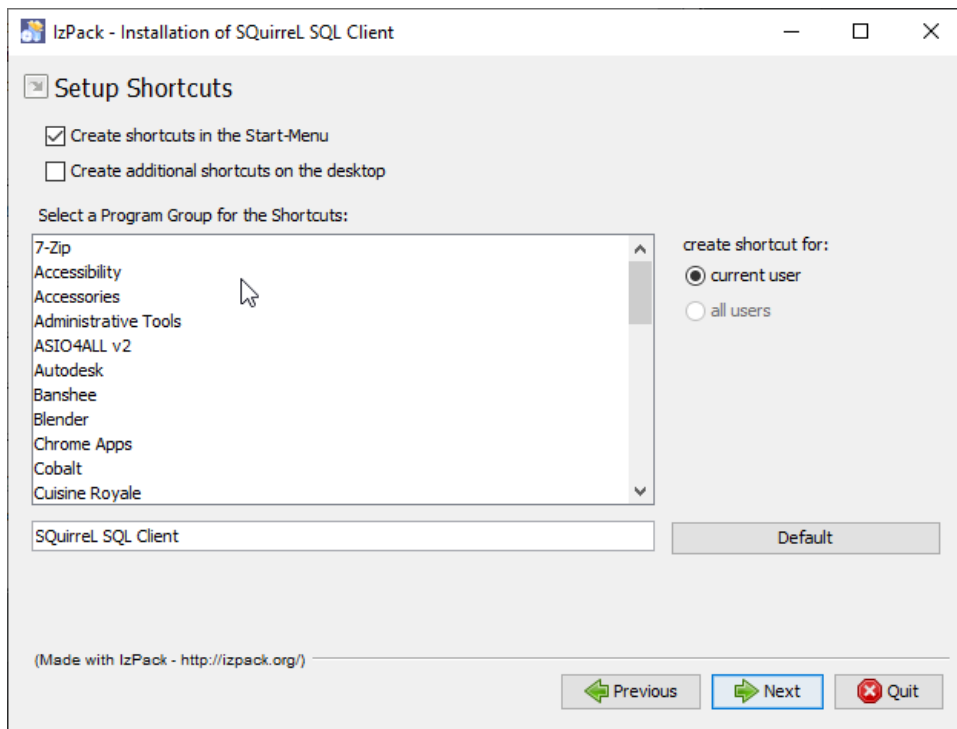
- Follow the installation guide:











## 4. Run Client

To start the client, use the provided startup script in the installation directory.

### 4.1. OS X

In the console:

```
squirrel-sql.sh
```

## 5. Connection drivers

In order to connect to LeanXcale, you need to install the JDBC driver . jar files.



You do need to install both the `elasticdriver` **and** `l18n` files.

## 6. Download JDBC driver

The JDBC driver can be downloaded from:

[Lx-jdbc-elasticdriver-with-dependencies.zip](#)



## 7. Install JDBC driver

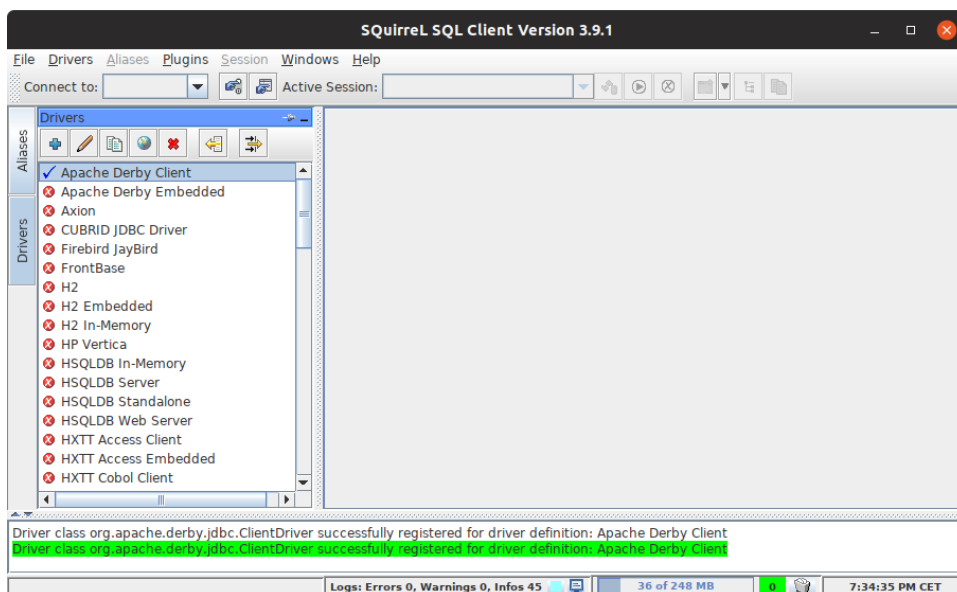
To install the JDBC driver:

- Expand/extract the downloaded archive
- Copy the `.jar` file from the expanded
- Find the Squirrel SQL install directory
- Open the `lib` directory
- Paste the `.jar` file into the `lib` directory



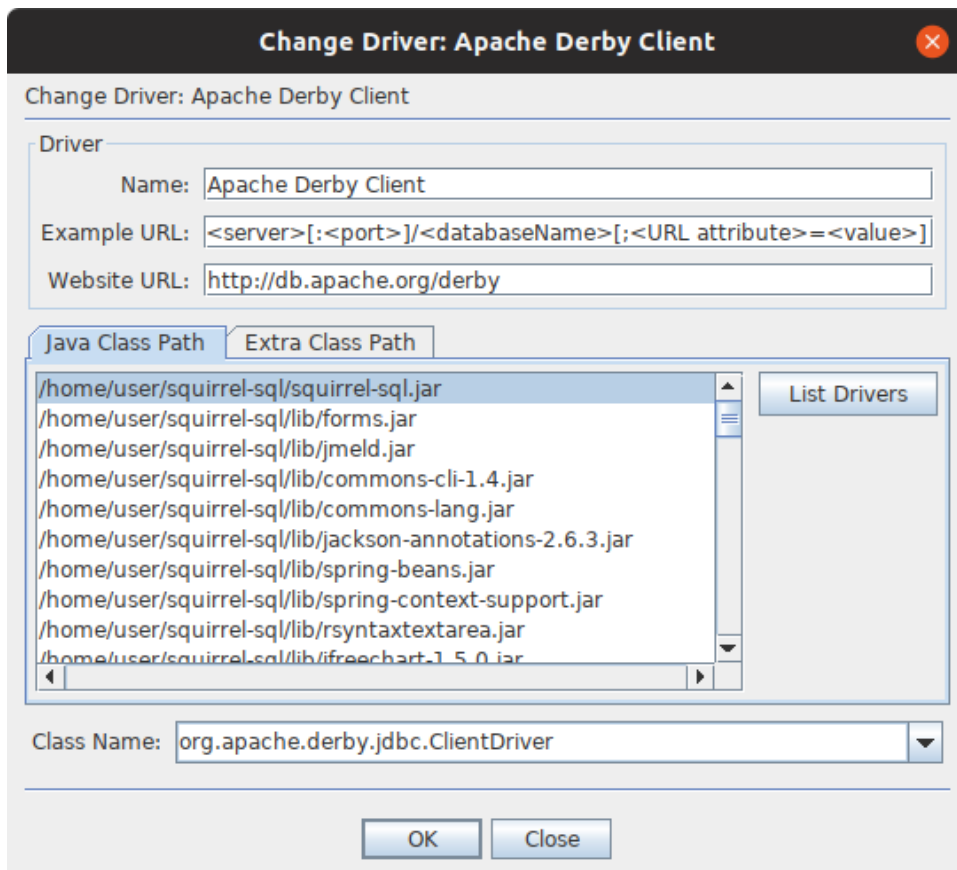
When the driver has been placed in the `lib` directory, it is shown as active in the Squirrel SQL interface (a blue tick mark).

- Open Squirrel SQL
- Click **Drivers**



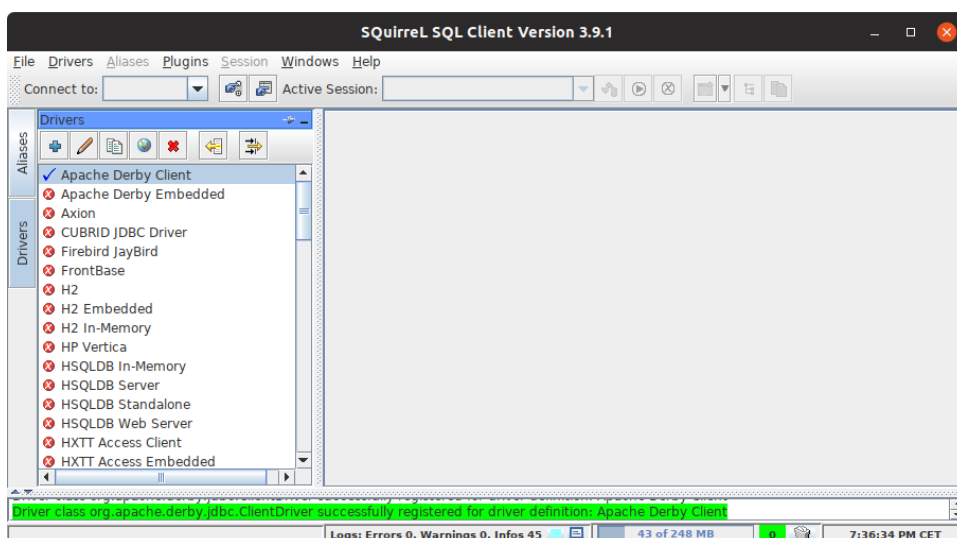
- Select the `Apache Derby Client`
- Double click the entry

The configuration shows the driver options:



- Click **OK**

The driver is registered:



You can now set up the connection.

## 8. Connect to LeanXcale

In Squirrel SQL, a database connection is called an **Alias** and are set up in the **Alias** tab.



The general format for the connection string is:

```
jdbc:sqlserver://[serverName[\instanceName][:portNumber]]
[;property=value[;property=value]]====
```

## 9. Setting up a connection