

SAMPLE PAPER 4: PAPER 2

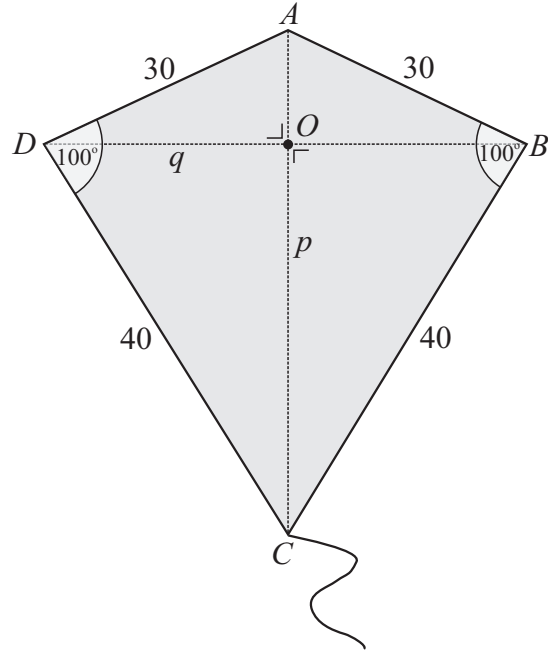
QUESTION 9 (75 MARKS)

Question 9 (a)

- (i) A **rhombus** is a simple quadrilateral whose sides are equal.
 (ii) The angles in a quadrilateral add up to 360° . If each angle is equal, each angle will be 90° and hence a **square** is the shape formed.

Question 9 (b)

- (i) Perimeter $P = 2a + 2b$
- (ii) Area of $\triangle ADC = \frac{1}{2}(p)(\frac{1}{2}q) = \frac{1}{4}pq$
 Area of $\triangle ABC = \frac{1}{2}(p)(\frac{1}{2}q) = \frac{1}{4}pq$
 Area of $ABCD = \frac{1}{4}pq + \frac{1}{4}pq = \frac{1}{2}pq$
- Area of $\triangle ADC = \frac{1}{2}ab \sin \theta$
 Area of $\triangle ABC = \frac{1}{2}ab \sin \theta$
 Area of $ABCD = ab \sin \theta$



Question 9 (c)

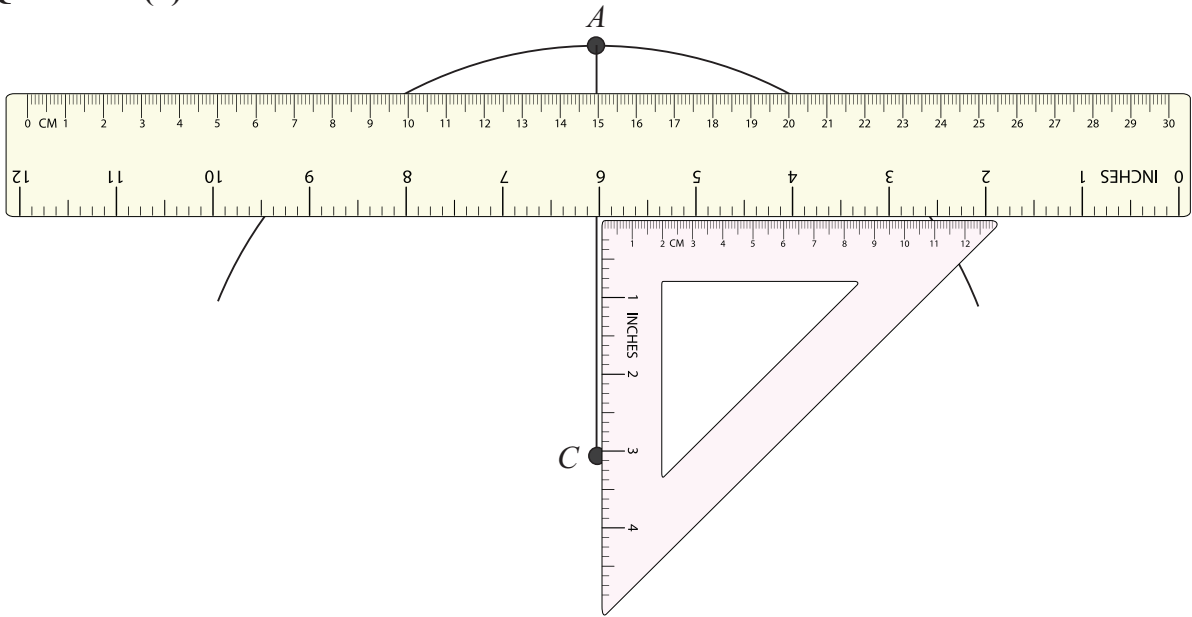
- (i) $|AC|^2 = 30^2 + 40^2 - 2(30)(40)\cos 100^\circ$
 $\therefore |AC| = 54 \text{ cm}$

- (ii) $\frac{\sin(|\angle CAD|)}{40} = \frac{\sin 100^\circ}{54}$
 $\sin(|\angle CAD|) = \frac{40 \sin 100^\circ}{54}$
 $|\angle CAD| = \sin^{-1}\left(\frac{40 \sin 100^\circ}{54}\right) = 46.8^\circ$

- (iii) $\sin(|\angle CAD|) = \frac{\frac{1}{2}|BD|}{30}$
 $\therefore \sin 46.8^\circ = \frac{|BD|}{60}$
 $|BD| = 60 \sin 46.8^\circ = 43.7 \text{ m}$

- (iv) Area = $(30)(40)\sin 100^\circ = 1182 \text{ cm}^2$

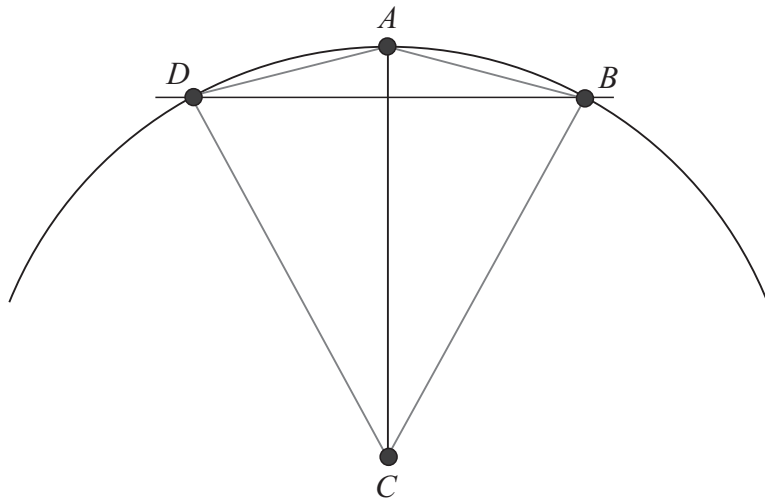
Question 9 (d)



Draw a line segment $[AC]$ of length 10 cm.

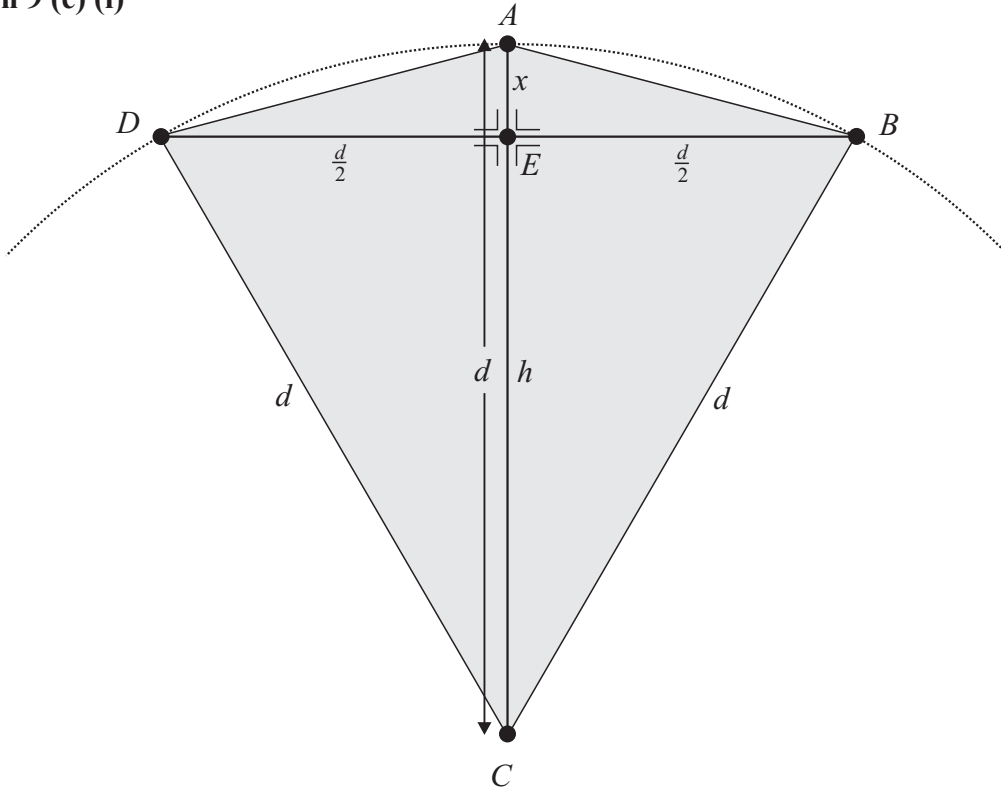
Using a compass draw an arc of radius 10 cm with C as centre.

Using a set square place a rule perpendicular to AC and move the ruler into position such that it measures a chord of distance of 10 cm. Draw a line along the ruler in this position.



Draw the kite $ABCD$.

Question 9 (e) (i)



Consider the right-angled triangle BEC :

$$d^2 = h^2 + \left(\frac{d}{2}\right)^2$$

$$d^2 = h^2 + \frac{d^2}{4}$$

$$\therefore h^2 = d^2 - \frac{d^2}{4} = \frac{3d^2}{4}$$

$$h = \sqrt{\frac{3d^2}{4}} = \frac{\sqrt{3}}{2}d$$

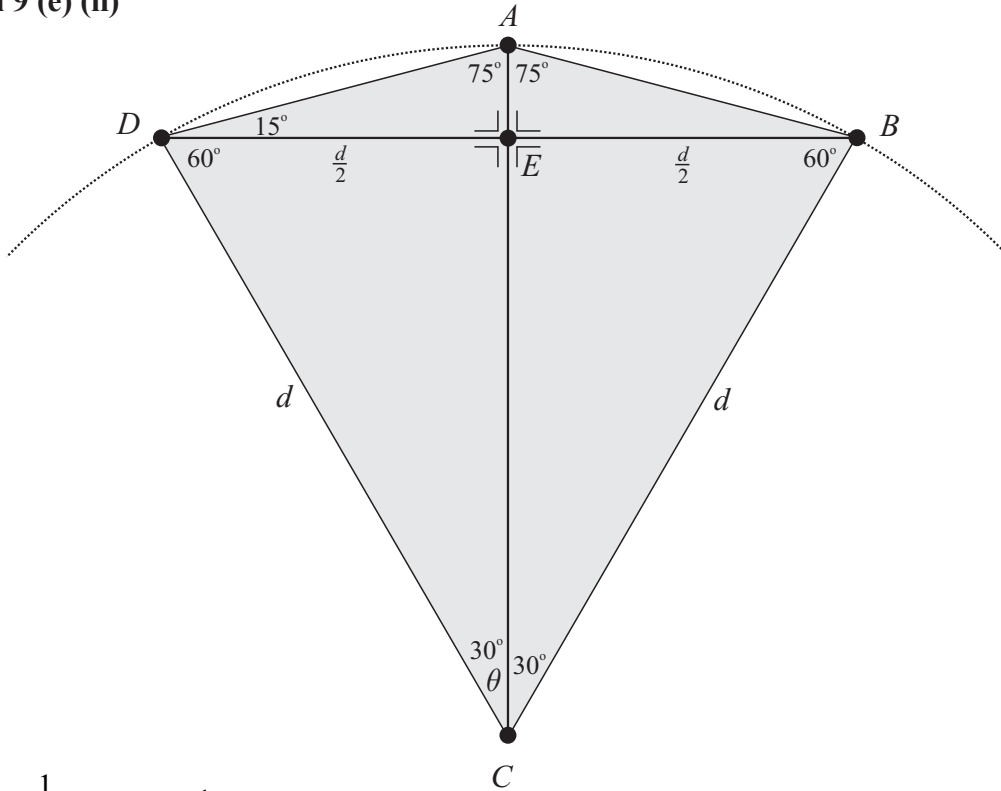
Consider the right-angled triangle BEA :

$$x = d - h = d - \frac{\sqrt{3}}{2}d = d\left(1 - \frac{\sqrt{3}}{2}\right) = d\left(\frac{2 - \sqrt{3}}{2}\right)$$

$$\tan(|\angle ABD|) = \frac{d\left(\frac{2 - \sqrt{3}}{2}\right)}{\frac{d}{2}} = (2 - \sqrt{3})$$

$$\therefore |\angle ABD| = \tan^{-1}(2 - \sqrt{3}) = 15^\circ$$

Question 9 (e) (ii)



$$\sin \theta = \frac{\frac{d}{2}}{d} = \frac{1}{2} \Rightarrow \theta = \sin^{-1}\left(\frac{1}{2}\right) = 30^\circ$$

$$|\angle ADC| = 75^\circ, |\angle ABC| = 75^\circ, |\angle BAD| = 150^\circ, |\angle BCD| = 60^\circ$$

Question 9 (f)

$$\tan 15^\circ = \tan(45^\circ - 30^\circ)$$

$$= \frac{\tan 45^\circ - \tan 30^\circ}{1 + \tan 45^\circ \tan 30^\circ}$$

$$= \frac{1 - \frac{1}{\sqrt{3}}}{1 + \frac{1}{\sqrt{3}}}$$

$$= \frac{\left(1 - \frac{1}{\sqrt{3}}\right)}{\left(1 + \frac{1}{\sqrt{3}}\right)} \times \frac{\sqrt{3}}{\sqrt{3}} = \frac{\sqrt{3} - 1}{\sqrt{3} + 1}$$

$$= \frac{(\sqrt{3} - 1)}{(\sqrt{3} + 1)} \times \frac{(\sqrt{3} - 1)}{(\sqrt{3} - 1)} = \frac{3 - 2\sqrt{3} + 1}{3 - 1}$$

$$= \frac{4 - 2\sqrt{3}}{2}$$

$$= 2 - \sqrt{3}$$
