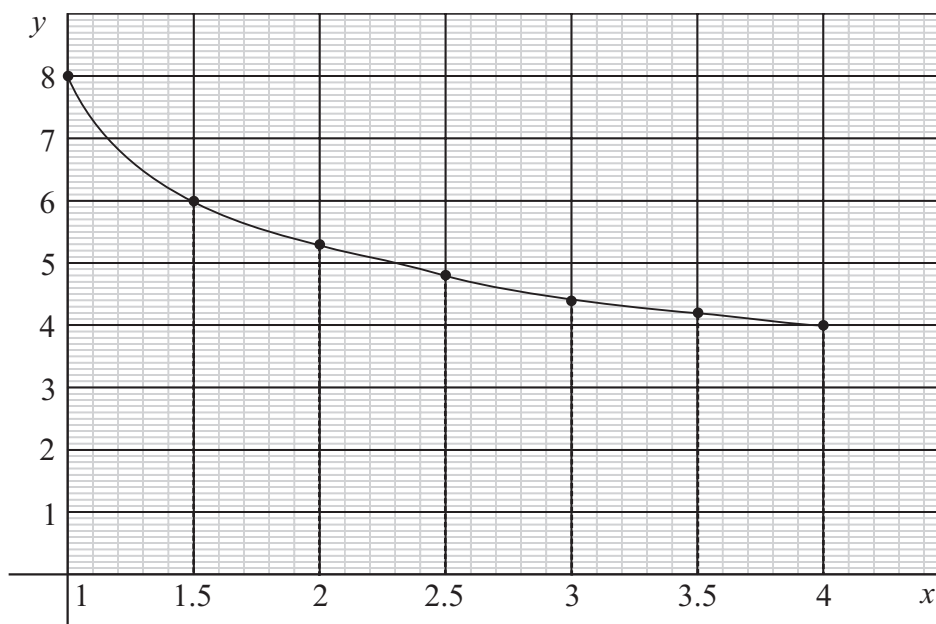


## SAMPLE PAPER 4: PAPER 2

### QUESTION 3 (25 MARKS)

#### Question 3 (a) & (b)

$x$	1.0	1.5	2.0	2.5	3.0	3.5	4.0
$y$	8.0	6.0	5.3	4.8	4.4	4.2	4.0



#### Question 3 (c)

$$A \approx \frac{h}{2} [y_1 + y_n + 2(y_2 + y_3 + y_4 + \dots + y_{n-1})]$$

$$h = 0.5$$

$$A \approx \frac{0.5}{2} [8 + 4 + 2(6 + 5.3 + 4.8 + 4.4 + 4.2)] = 15.35 \text{ square units}$$


---