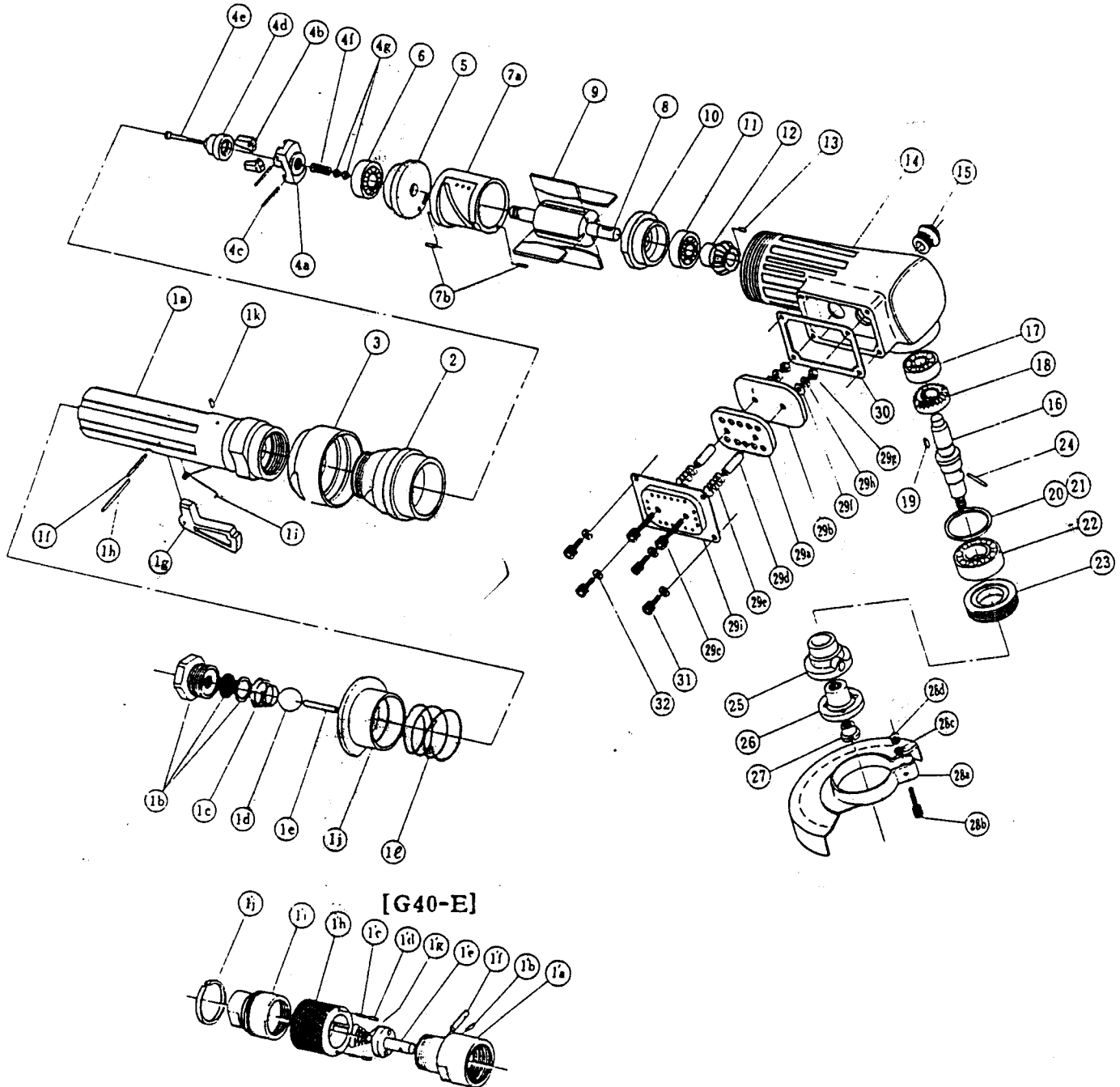


MODELS: G40-EF [G40-E] DISC GRINDERS (YES-00)

Tool No.	1120	0000	00	00
	1128	0000	00	00

● EXPLODED VIEW



MODELS: G40-EF [G40-E] DISC GRINDERS (YES-00)

Tool No.	1120	0000	00	00
	1128	0000	00	00

● PARTS LIST

Index No.	Name of Parts	Per Set	Parts No.	Index No.	Name of Parts	Per Set	Parts No.
1	Throttle Body Assy.	1set	1117 0101 00 99	20	C-Packing (30×34.5×0.1)	1	8010 1142 00 00
	(a) Throttle Body	1	1117 0101 00 00	21	C-Packing (30×34.5×0.2)	1	8010 1135 00 00
	(b) Hose Joint	1	1114 0113 00 00	22	Ball Bearing (# 6202Z)	1	9100 4006 00 00
	Strainer	1	1601 0111 00 00	23	Bearing Cap	1	1106 0618 00 00
	Washer (15×18.8×1)	1	8040 1034 00 00	24	Spring Roll Pin (3×16)	1	9250 1050 00 00
	(c) Conical Spring (16×21×16)	1	8020 3045 00 00	25	Inner Flange (φ15.88)	1	1117 0653 00 01
	(d) Ball (5/8)	1	9150 4006 00 00	26	Outer Flange (φ15.88)	1	1117 0654 00 01
	(e) Pin (4×24)	1	8051 2017 00 00	27	Outer Wheel Screw	1	1103 0655 00 00
	(f) Spring Roll Pin (3×20)	1	9250 1052 00 00	28	Wheel Cover Assy.	1set	1117 0662 00 99
	(g) Throttle Lever	1	1422 0110 00 00		(a) Wheel Cover	1	1117 0662 00 01
	(h) Spring Roll Pin (3×32)	1	9250 1058 00 00		(b) Hexagon Socket Bolt (M6×22×18)	1	8070 3035 00 00
	(i) Torsion Coil Spring	1	1422 0125 00 00		(c) Spring Washer (M6)	1	9200 2006 00 00
	(j) Throttle Body Sleeve	1	1422 0132 00 00		(d) Hexagon Nut (M6)	1	9500 1005 00 01
	(k) Spring Roll Pin (3×6)	1	9250 1043 00 00	29	Silencer Assy.	1set	1119 0081 00 99
	(l) Spring (36.5×23)	1	8020 1121 00 00		(a) Silencer Cover	1	1421 0081 00 00
2	Governor Case	1	1119 0521 00 00		(b) Silencer Sheet	1	1119 0032 00 00
3	Governor Case Set Nut	1	1119 0501 00 00		(c) Hexagon Socket Bolt (M4×22×14)	2	8070 3011 00 00
4	Governor Body Assy.	1set	1105 0512 00 99		(d) Roll Spacer (4×15)	2	9270 1002 00 00
	(a) Governor Body	1	1105 0512 00 00		(e) Spring (8×16)	2	8020 1066 00 00
	(b) Governor Weight	2	1105 0513 00 00		(f) Polished Washer (M4)	2	9220 1002 00 00
	(c) Spring Roll Pin (2×16)	2	9250 1019 00 00		(g) Hexagon Nut (M4)	2	9500 1002 00 01
	(d) Governor Valve	1	1105 0505 02 00		(h) Spring Washer (M4)	2	9200 3004 00 00
	(e) Governor Rod	1	1105 0511 01 00		(i) Exhaust Cover	1	1421 0016 00 00
	(f) Spring (5.7×15)	1	8020 1032 00 00	30	S-Packing	1	1421 0003 00 00
	(g) Adjust Nut	2	1105 0503 00 00	31	Hexagon Socket Bolt (M4×8)	4	8070 3005 00 00
5	Upper Plate	1	1105 0303 00 00	32	Spring Washer (M4)	4	9200 3004 00 00
6	Ball Bearing (≅ 629VY)	1	9100 3005 00 00	[G40-E]			
7	Cylinder Assy.	1set	1105 0304 00 99	1	Throttle Body Assy.	1set	1105 0101 01 99
	(a) Cylinder	1	1105 0304 00 00		(a) Throttle Body	1	1105 0101 01 00
	(b) Spring Roll Pin (2.5×6)	2	9250 1030 00 00		(b) Pin (2.5×6)	1	8051 1072 00 00
8	Rotor	1	1105 0305 01 00		(c) Spring (2.5×10)	2	8020 1001 00 00
9	Vane	4	1105 0306 00 00		(d) Pin (3×7)	2	8051 2013 00 00
10	Lower Plate	1	1105 0307 00 00		(e) Throttle Valve	1	1105 0108 00 00
11	Ball Bearing (≅ 629)	1	9100 1009 00 00		(f) Pin (4×17)	1	8053 1022 00 00
12	Rotor Bevel Gear	1	1102 0315 02 00		(g) Conical Spring (6×18×10)	1	8020 3003 00 00
13	Key (3×3×10)	1	8060 1011 00 00		(h) Throttle Handle	1	1105 0102 01 00
14	Motor Case	1	1119 0011 00 00		(i) Hose Joint	1	1105 0113 00 00
15	Oil Plug (A)	1	1401 0010 00 00		(j) Joint Ring	1	1105 0116 00 00
16	Main Shaft	1	1107 0614 00 00	25	Inner Flange (φ22.23)	1	1117 0653 00 02
17	Ball Bearing (≅ 629)	1	9100 1009 00 00	26	Outer Flange (φ22.23)	1	1117 0654 00 02
18	Main Shaft Bevel Gear	1	1102 0615 01 00] STANDARD			
19	Key (3×3×6)	1	8060 1009 00 00				

OPTIONAL

STANDARD



YOKOTA EUROPA BV

P.O. BOX 392 NL - 1000 AJ AMSTERDAM PHONE 020 - 625 29 53 FAX 020 - 625 35 69

Hydraulic Impulse Wrenches, Impact Wrenches, Drills, Grinders, Screwdrivers, Chippers, Scalers, Pumps.