

## KI 8-D

»rod ends and spherical bearings

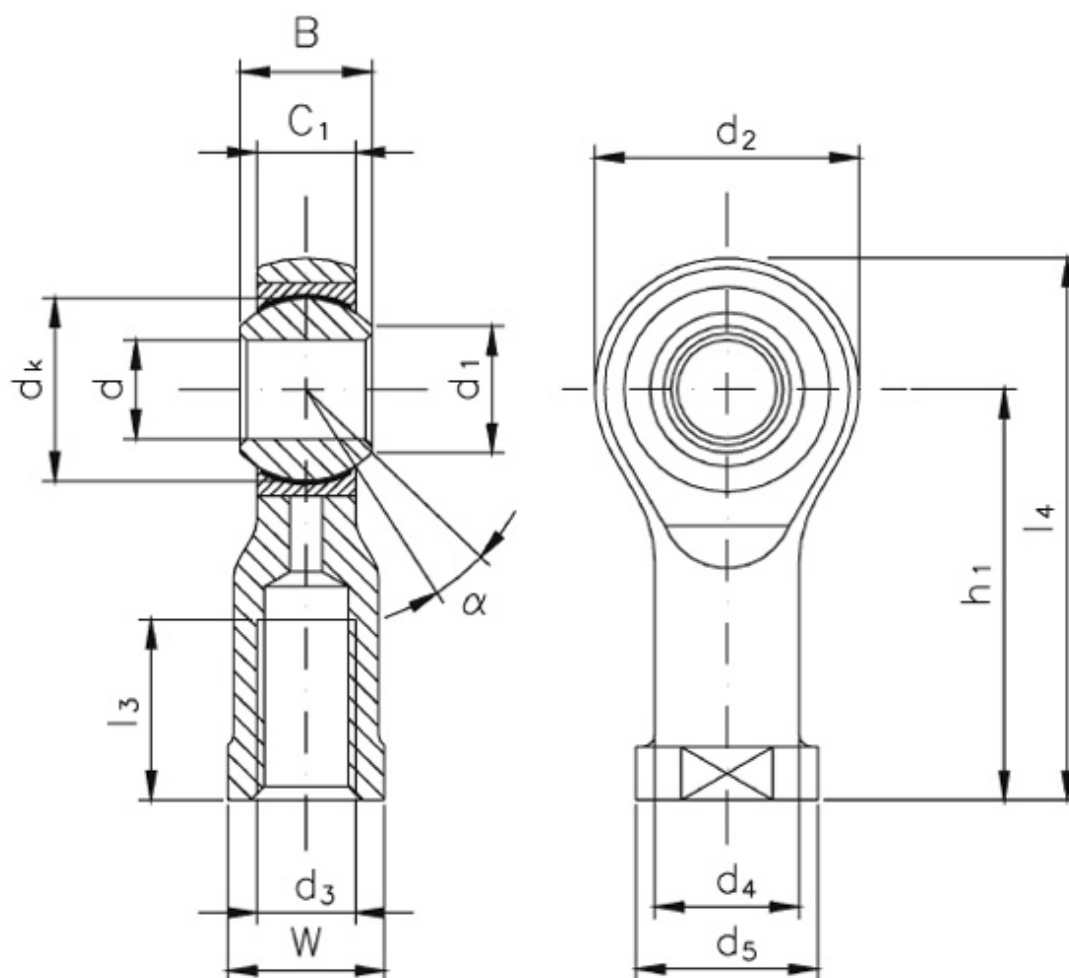
»Rod ends dimension series K

»Standard

»maintenance free

»Female thread

ø	8 mm
d3	M8 mm
B	12 mm
C1	9,00 mm
d1 ~	10,3 mm
d2 max.	25 mm
d4 ~	12,5 mm
d5	16 mm
dk	15,8 mm
h1	36 mm
l3 min.	12 mm
l4 ~	48,5 mm
W	14 mm
Load ratings stat C0 Standard	12 kN
Load ratings stat C0 -V	16 kN
Load ratings stat C0 -L	21 kN
Tilt angle alpha	13 °
Weight	0,043 kg



## Maintenance and instruction manual

### Rod ends maintenance free

#### Storage

ASKUBAL rod ends are covered with an anticorrosive. They can be stored in the original packaging in between a temperature from 10°C up to 40°C and a relatively humidity less than 60% for several years.

#### Mounting

The temperature of rod end must be in between -10°C and 80°C during operating.

**Caution: These bearings do have a sliding film with a PTFE sliding face. The PTFE sliding face is inert and completely non-toxic. Over 320°C PTFE is pyrolyzing and getting highly toxic even in small quantities and after cooling down. Therefore do not heat these bearings over 150°C.**

#### Before mounting

Shaft or bolt must be free of burrs.

All parts must be clean and dust-free, the spherical bearing too.

Do not touch metallic bright surfaces barehanded; risk of corrosion.

#### Mounting

Be sure that the force fitting of shaft or bolt occurs only under consistent pressure on the inner ring.

Caution: Never let mounting forces affect the sliding surface. (for example by pressing the bolt into bore do not let force affect the housing)

Never hammer for mounting or demounting.

Follow the instructions of the machine design engineer for the set-screw tightening torque.

#### Inspection after mounting

Check sufficient clearance of inner ring.

Check the fitting position of rod end on shaft to avoid too highly tilting of bearing.

### Maintenance

Check the increase of bearing clearance and excessive abrasion.