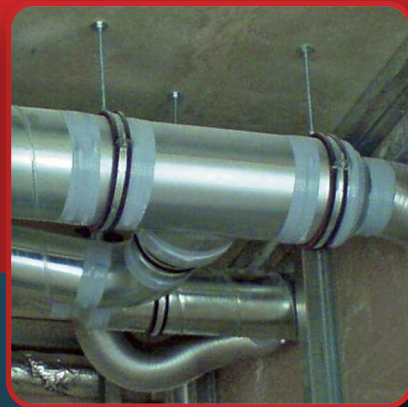
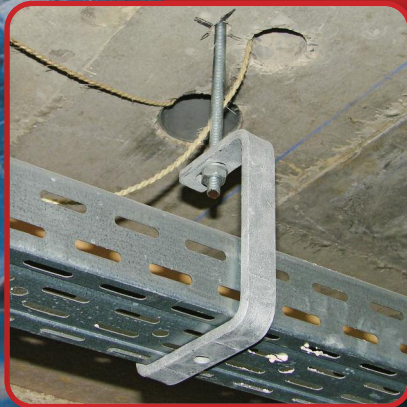
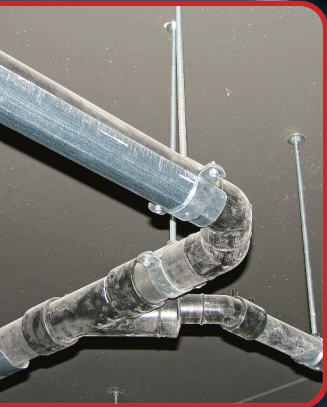
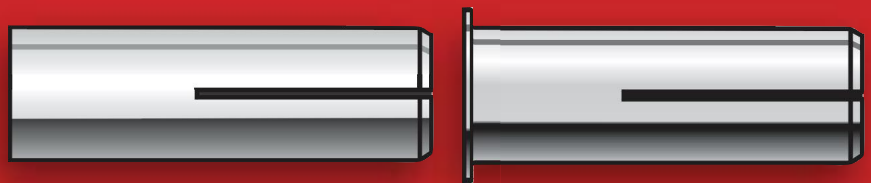


Which approved drop-in anchor is easy to install in cracked and uncracked concrete?



**Mechanical
Anchors**

DM-PRO

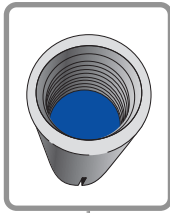


DM-PRO: easy installable approved drop-in anchor for cracked and uncracked concrete

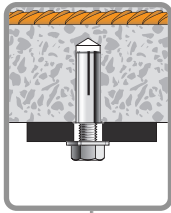
ETA option 7 and part 6 approval



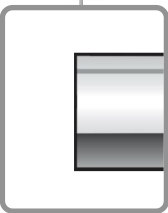
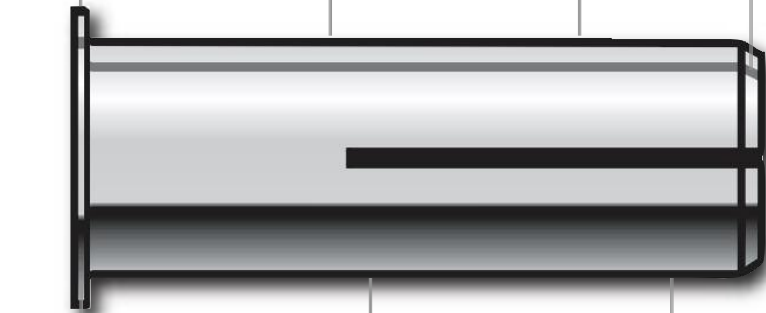
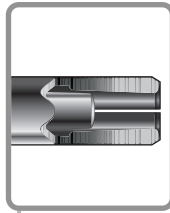
Special blue cone-sheet to stabilise the cones in transport



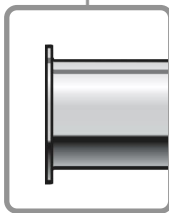
Special M6x25 for shallow embedment



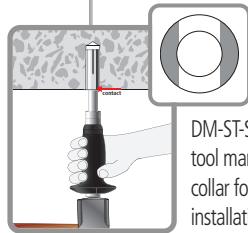
Quick setting due to special cone design



Non-lip for invisible coverage with mortar after use



Lip for correct embedment depth and automatic aligning of rods



DM-ST-SG setting tool marks the collar for correct installation

Approvals and test reports



M8-M16



M6-M12

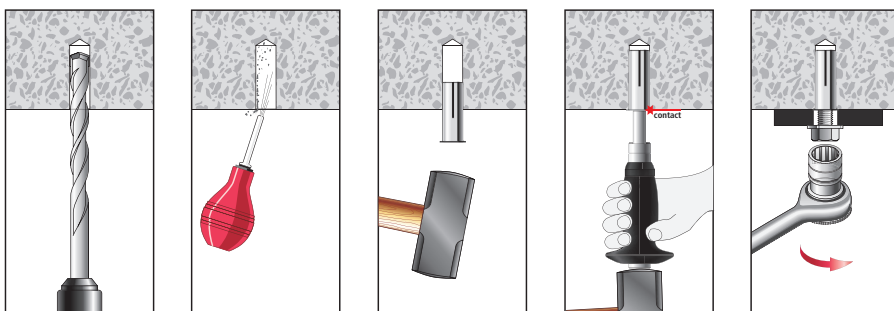


Suitable base materials



max. M8

Installation instruction



Available range



DM-LIP-PRO

Zinc plated with lip

SIZES:

M6 to M20



DM-PRO

Zinc plated

SIZES:

M6 to M20

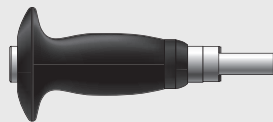


DM-SS-PRO

A4 steel

SIZES:

M6 to M20



DM-ST-SG

Setting tool with safety grip, marks the anchor for correct installation

SIZES:

M6 to M20



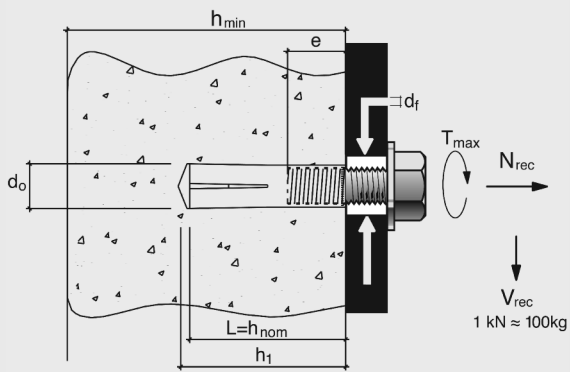
DM-ST

Standard setting tool

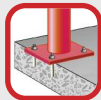
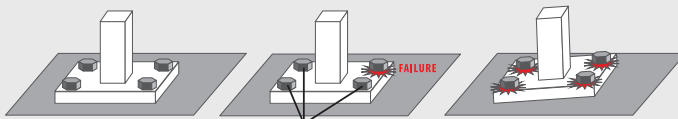
SIZES:

M6 to M20

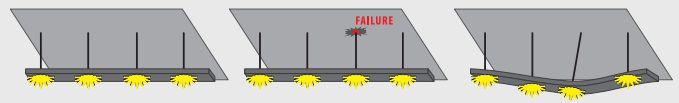




Explanation ETA Option 7 and ETA Part 6 for redundant systems



Option 7 application. High loads, uncracked concrete. Failure of one anchor means failure of complete system.



Part 6 application. Low loads, cracked concrete. Failure of one anchor means deformation of complete system but no failure. The load is transferred to other anchors.



Technical data in uncracked concrete, ETA option 7 (ETA-10/0144), steel grade 8.8

Type	Size	d ₀ mm	d _f mm	h _{nom} mm	h ₁ mm	e mm	T _{max} Nm	h _{min} mm	edge C _{min} mm	spacing S _{min} mm	uncracked concrete N _{rec} kN	V _{rec} kN
DM-LIP-PRO, DM-PRO, DM-SS-PRO	M6*	8	7	25	26	11	4	80	150	200	2,1	1,9
DM-LIP-PRO, DM-PRO, DM-SS-PRO	M8	10	9	30	32	13	8	120	100	70	3,9	3,3
DM-LIP-PRO, DM-PRO, DM-SS-PRO	M10	12	12	40	42	17	15	120	130	100	3,6	4,2
DM-LIP-PRO, DM-PRO, DM-SS-PRO	M12	16	14	50	53	22	35	130	170	120	4,1	10,3
DM-LIP-PRO, DM-PRO, DM-SS-PRO	M16	20	18	65	68	30	60	160	200	160	4,1	13,5
DM-LIP-PRO, DM-PRO, DM-SS-PRO	M20*	25	22	80	85	32	120	180	240	200	10,2	17,8

* No ETA for uncracked concrete, option 7



Technical data in cracked concrete, ETA part 6 (ETA-10/0145)

Type	Size	d ₀ mm	d _f mm	h _{nom} mm	h ₁ mm	e mm	T _{max} Nm	h _{min} mm	edge C _{min} mm	spacing S _{min} mm	cracked concrete N _{rec} kN	V _{rec} kN
DM-LIP-PRO, DM-PRO, DM-SS-PRO	M6	8	7	25	26	11	4	80	150	200	0,6	0,6
DM-LIP-PRO, DM-PRO, DM-SS-PRO	M8	10	9	30	32	13	8	120	100	70	0,6	0,6
DM-LIP-PRO, DM-PRO, DM-SS-PRO	M10	12	12	40	42	17	15	120	130	100	1,4	1,4
DM-LIP-PRO, DM-PRO, DM-SS-PRO	M12	16	14	50	53	22	35	130	170	120	1,7	1,7
DM-LIP-PRO, DM-PRO, DM-SS-PRO	M16*	20	18	65	68	30	60	160	200	160	-	-
DM-LIP-PRO, DM-PRO, DM-SS-PRO	M20*	25	22	80	85	32	120	180	240	200	-	-

* No ETA for cracked concrete, part 6

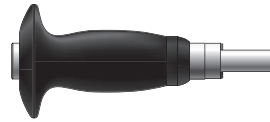


DM-PRO range overview



DM-LIP-PRO drop-in anchor – zinc plated with lip

Type	Art. Nr.		
DM-LIP-PRO M6	06304	100	1600
DM-LIP-PRO M8	06305	100	800
DM-LIP-PRO M10	06306	100	800
DM-LIP-PRO M12	06308	100	400
DM-LIP-PRO M16	06320	25	100
DM-LIP M20	06312	25	100



DM-ST-SG drop-in anchor setting tool with safety grip

Type	Art. Nr.		
DM-ST-SG M6	06330	1	
DM-ST-SG M8	06332	1	
DM-ST-SG M10	06334	1	
DM-ST-SG M12	06336	1	
DM-ST-SG M16	06338	1	
DM-ST-SG M20	06340	1	



DM-PRO drop-in anchor – zinc plated

Type	Art. Nr.		
DM-PRO M6	24600	100	1600
DM-PRO M8	24602	100	800
DM-PRO M10	24604	100	800
DM-PRO M12	24606	100	400
DM-PRO M16	24608	25	100
DM M20	24610	25	100



DMST drop-in anchor setting tools

Type	Art. Nr.		
DM6ST	06315	1	20
DM8ST	06307	1	20
DM10ST	06309	1	20
DM12ST	06310	1	20
DM16ST	06311	1	20
DM20ST	06313	1	20



DM-SS-PRO drop-in anchor – A4 steel

Type	Art. Nr.		
DM-SS-PRO M6	06224	100	1600
DM-SS-PRO M8	06225	100	800
DM-SS-PRO M10	06226	100	800
DM-SS-PRO M12	06228	100	400
DM-SS-PRO M16	06230	25	100
DM-SS M20	06232	25	100

Your Powers Dealer:



EN-BRO_DM-PRO_332-1-1-1
ArtNo.61212

+31 (0)888-POWERS (769 377)

Powers cannot be responsible for any errors and reserves the right to make technical and range modifications without notice. No liability is accepted for printing errors and omissions. Powers terms and conditions apply.
Copyright © 2011 Powers Fasteners Europe. All rights reserved.



Powers[®]