

GALACTIC SEPARATOR

NEW LINE

Kit includes separators and relative screw connectors to make Galactic connections. Once installed according to instructions, the connections, separated by the wrap-around accessory, are inserted into a tray or a confined casing to then be filled with Magic Gel or Ray Gel, Magic Rubber or Ray RTV or else insulated with the supplied PVC tape.

Product Code

Maximum conductor cross section (n° x mm²)

Galactic Separator 6

5 x 1 to 6

Galactic Separator 16

5 x 2,5 to 16

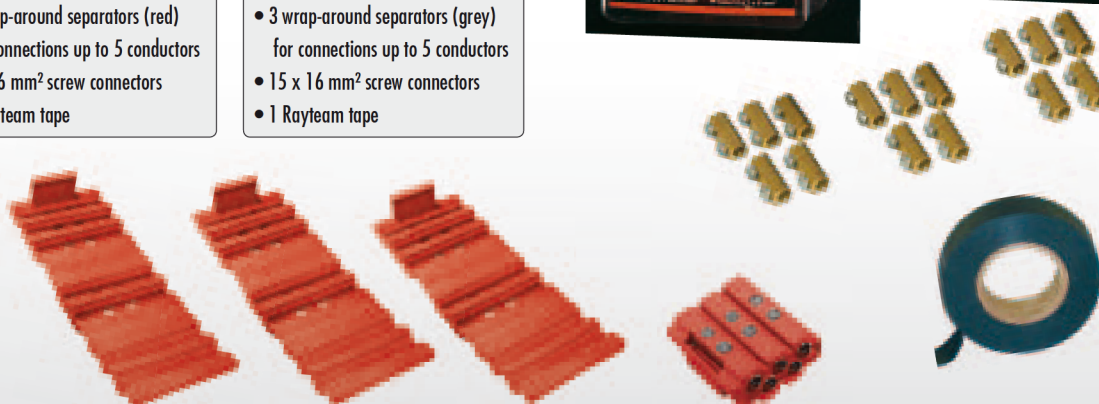
Kit composition

Galactic Separator 6

- 6 wrap-around separators (red)
for connections up to 5 conductors
- 30 x 6 mm² screw connectors
- 1 Rayteam tape

Galactic Separator 16

- 3 wrap-around separators (grey)
for connections up to 5 conductors
- 15 x 16 mm² screw connectors
- 1 Rayteam tape



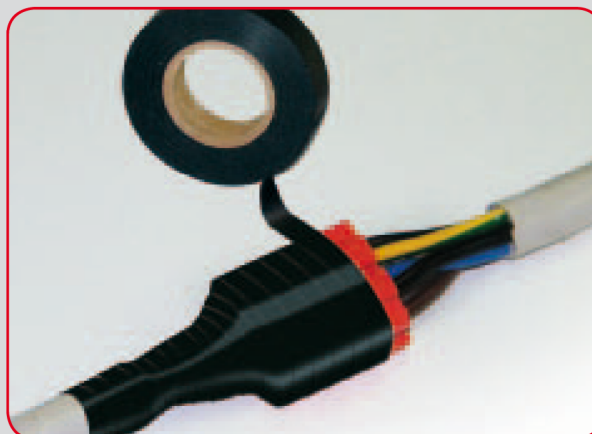
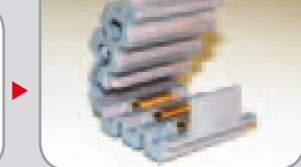
Installation sequence



Galactic Gel connection 6



Galactic Gel connection 16



Ray
tech

Galactic Line