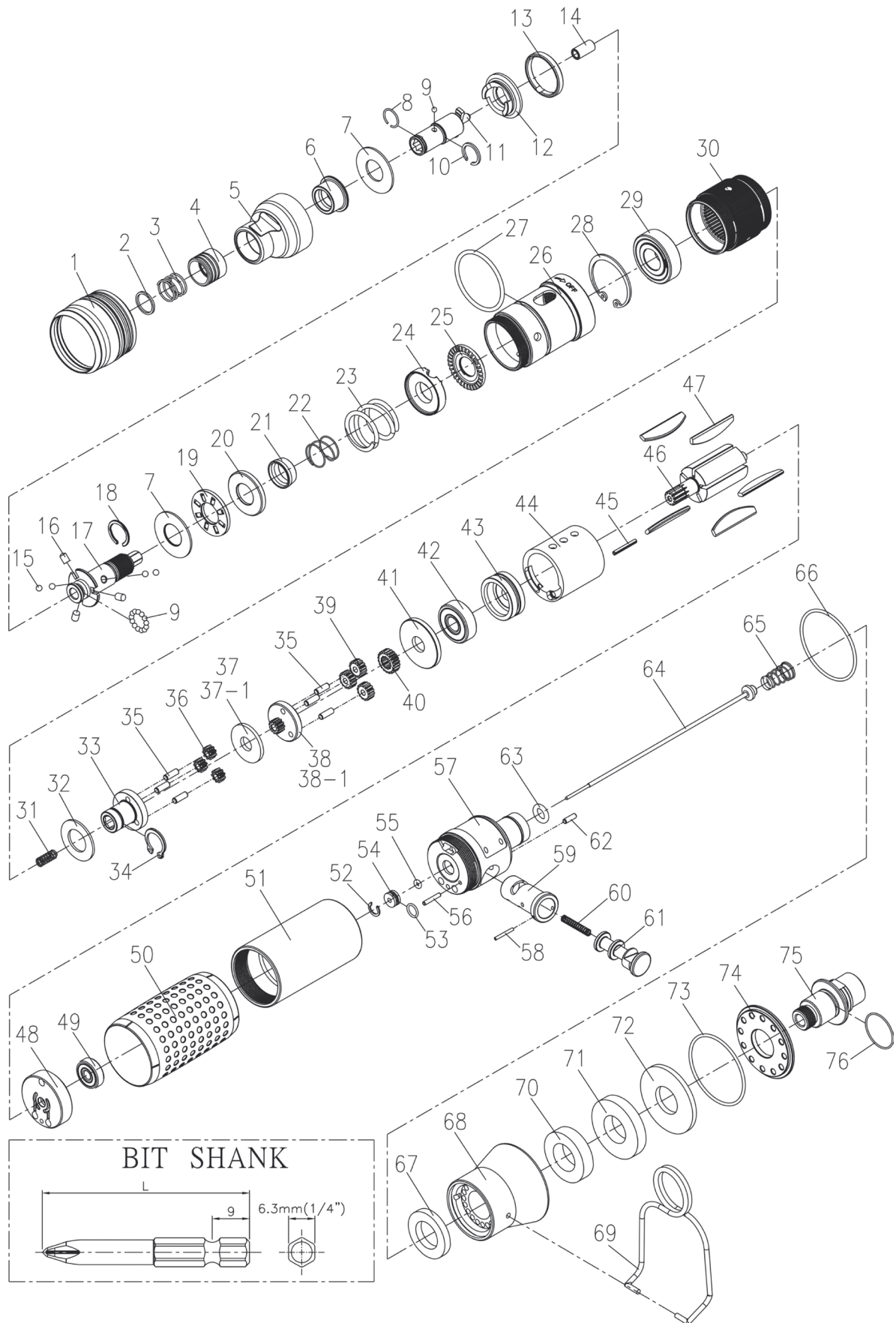


RRI-SD21104

SCREWDRIVER (PUSH START TYPE)

EDITION: 1



RRI-SD21104

SCREWDRIVER (PUSH START TYPE)

EDITION: 1

Index No.	Part No.	Description	Q'ty
1	B20S-207	Adjusting Cover	1
2	B20S-415	Spring Washer	1
3	B20S-418	Spring (Ø10.8 x Ø0.8 x 10.6L)	1
4	B20S-417	Quick Change Holder	1
5	B20S-420	Housing Cover	1
6	B20S-202	Anvil Bushing	1
7	00-1516	Washer (Ø12 x Ø26 x 1t)	2
8	B20S-428B	Anvil Collar B	1
9	00-3816	Steel Ball (Ø2.5)	14
10	B20S-428A	Anvil Collar A	1
11	B20S-405	Anvil	1
12	B20S-425	Clutch Ring	1
13	B20S-424	Ejector Ring	1
14	00-6301	DU Bearing (Ø4 x Ø6 x 6L)	1
15	00-3826	Steel Ball (Ø3)	4
16	B20S-426	Ejector Pin	3
17	B20S-416	Transmission Shaft	1
18	B20S-428C	Anvil Collar C	1
19	00-2804	Thrust Bearing (NTB122601)	1
20	B20S-433	Spring Seat	1
21	B20S-449	Control Ring	1
22	B20S-427	Spring	1
23	B20S-429	Spring	1
24	B20S-431	Adjusting Lock Ring	1
25	B20S-430	Adjusting Nut	1
26	B20S-201	Clutch Housing	1
27	00-41222	O-Ring (Ø25 x Ø2)	1
28	00-3113	Snap Ring (R28)	1
29	00-2305A	Ball Bearing (6001 Ø28 x Ø12 x 8t)	1
30	C20S-440	Internal Gear	1
31	C20S-450	Spring	1
32	C20S-441	Washer	1
33	C20S-442	Front Gear Cage	1
34	00-3507	Snap Ring (S12)	1
35	00-3424	Pin (Ø3 x 8L)	6
37-1	C20S-444B	Washer B (2mm)	1
38-1	C20S-452B	Rear Gear Cage B + Rear Gear B	1
36	C20S-443A	Planet Gear A	3
39	C20S-443B	Planet Gear B	3
40	C20S-447	Rotor Gear	1

Index No.	Part No.	Description	Q'ty
41	C20S-448	Rear Cover	1
42	00-2332	Ball Bearing (608ZZ Ø22 x Ø8 x 7t)	1
43	C20S-301	Front Plate	1
44	C20S-302	Cylinder	1
45	00-3344	Spring Pin (Ø2 x 16)	1
46	CS20S-303	Rotor	1
47	C20S-304	Rotor Blade	1
48	C20S-305	Rear Plate	1
49	00-2355	Ball Bearing (625Z Ø16xØ5x5t)	1
50	B20S-103	Housing Rubber	1
53	C20S-101	Motor Housing	1
54	00-3115	Snap Ring (R8)	1
55	00-41189	O-Ring (Ø6 x Ø1)	1
56	C20S-526	Guide Ring	1
57	00-41113	O-Ring (Ø2 x Ø1.5)	1
58	00-3447	Pin (Ø2 x 12L)	1
59	C20S-518	Seat	1
60	00-3367	Spring Pin (Ø1.5 x 12)	1
61	C20S-501	Valve Sleeve	1
62	C20S-528	Spring (Ø0.4 x Ø3.5 x 19L)	1
63	C20S-502	Reverse Valve	1
64	00-3448	Pin (Ø2.5 x 8L)	1
65	00-41188	O-Ring (Ø5.7 x Ø2.5 x Ø10.7)	1
66	B20S-314	Valve Stem	1
67	C20S-515	Spring	1
68	00-41223	O-Ring (Ø31 x Ø1)	1
69	C20S-601	Muffler	1
70	B20S-603	Exhaust Deflector	1
71	B20S-102	Hanger	1
72	B20S-601A	Muffler	1
73	B20S-601B	Muffler	1
74	B20S-601C	Muffler	1
75	00-41224	O-Ring (Ø38 x Ø41 x Ø1.5)	1
76	B20S-608	Deflector Cap	1
77	B20S-604A	Air Inlet (1/4" PF-19)	1
77	B20S-604B	Air Inlet (1/4" PT-19)	1
77	B20S-604C	Air Inlet (1/4" NPT-18)	1
78	00-41175	O-Ring (Ø13 x Ø16 x Ø1.5)	1