



TVM 3420 Series

TVM 3440 Series

TVM 3620 Series

TVM 3640 Series

Full Installation Guide

Everything you need to get your TV safely on the wall, in no time

Before you start

...we just wanted to say thanks for choosing Vogel's. Smart choice.

And you're already making another smart choice – reading the manual! Keep reading to learn all about safe, efficient installation, and how to use your new mount.

Stay safe



Warning

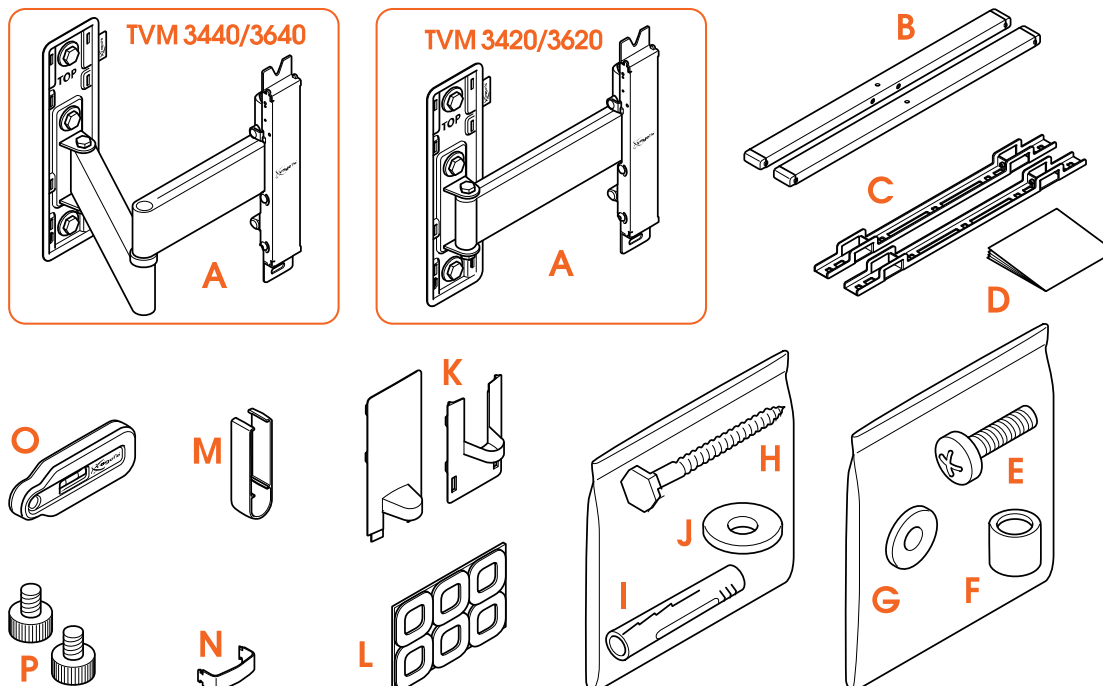
Always read these safety instructions carefully before installing and using this product.

Following these instructions is strictly required. Incorrect mounting and/or installation could put you, your TV, and your family at substantial risk.

Don't dare risk it... Read all

- Vogel's recommends that the mounting and/or installation of this product should be carried out by a suitably qualified expert.
- Vogel's cannot be held responsible for any injury and/or damage caused by incorrect installation.
- Please consult the manual for your TV and ensure that the weight and size of the TV is within the maximum weight and size limits specified for this product, and that the TV mounting bolts used are of a suitable length and diameter. Note that not all the TV mounting accessories provided are required for the installation of any one TV.
- The wall mounting accessories provided are exclusively intended for installation on walls made of solid brick, solid concrete or solid wood columns.
- Any material covering the wall must not exceed 3 mm/ 0.12 inch.
- For mounting on walls made of other materials, such as hollow bricks, wood panels or plasterboard, please consult your installer and/or specialist supplier.
- Clean the product with a dry, lint-free cloth. Do not use detergents or other solvents to clean the product.
- Only qualified, certified personnel may repair the product. Use only original spare parts. The use of other parts will result in voiding the warranty, and could lead to injuries.
- Alterations to the product and technical modifications are not permitted. This will void the warranty, and could lead to injuries.
- Always store the product in a dry and safe place with a temperature between -10°C to +50°C.
- Handle and transport the product with care.
- Repack the product when transporting or not using it for a longer period of time.
- Lifting your TV is a two-person job. Don't be bold!

What's in your box?



- Something missing? Make sure your packaging has everything in place:

- A. Wall mount
- B. Horizontal bars
- C. Vertical strips
- D. Safety instructions
- E. Bolts for fastening strips on TV (see contents below)
- F. Spacers
- G. Washers 18 mm
- H. Screws
- I. Plugs (fischer® DuoPower)
- J. Washers 22 mm
- K. Covers
- L. Protective TV patches
- M. Cable clip or clips (depending on model)
- N. Cable clip for wall plate
- O. Spirit level
- P. Thumbnuts (pre-attached to horizontal bars for some models)

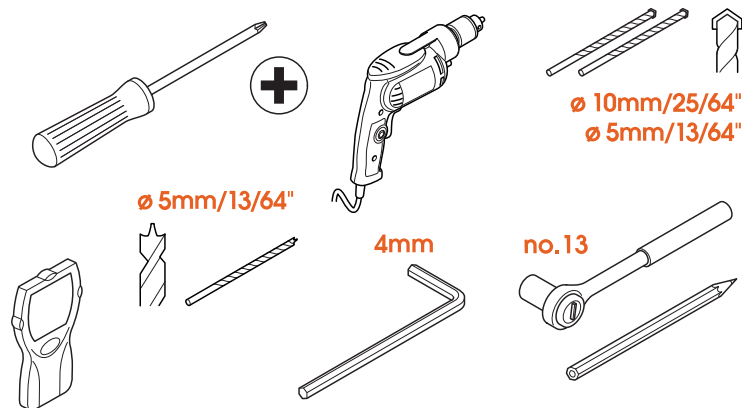
- Contents of the TV fasteners kit:

- 4x M6*12mm bolts
- 4x M6*25mm bolts
- 4x M6*35mm bolts
- 4x M8*12mm bolts
- 4x M8*25mm bolts
- 4x M8*45mm bolts
- 4x M6 washer
- 4x spacer 10mm
- 4x spacer 5mm



You just need four bolts to mount your TV. Store the rest for other use!

Got your tools ready?



- Don't start without all the necessary tools:

- Crosshead screwdriver
- Drilling machine
- 10 mm or 25/64" concrete / brick drill (for concrete / brick walls only)
- 5 mm or 13/64" concrete / brick drill (for concrete / brick walls only)
- 5 mm or 13/64" wood drill (for walls with wooden studs only)
- Stud finder (for walls with wooden studs only)
- Socket wrench no. 13
- Pencil
- M4 (4mm) Allen key

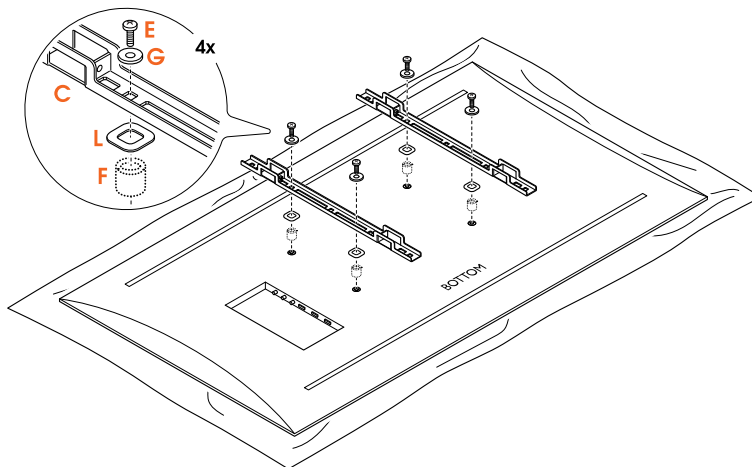
Take care of your safety



- Who cares about looking cool? Always wear personal protective equipment:
 - Eye protection
 - Ear protection
 - Safety shoes

Ready... set... get installing!

Step 1: Attach the strips to the TV



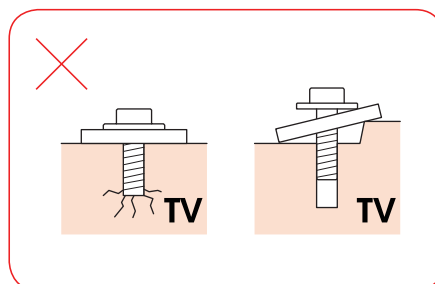
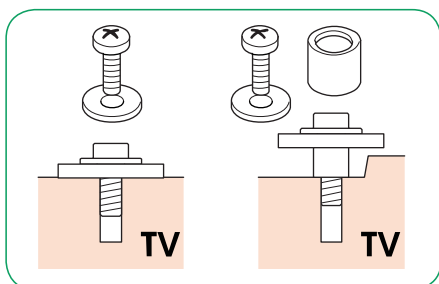
1. Carefully place the TV face down, on a soft clean surface without any obstacles.
2. Fix the **protective TV patches** ① onto the **vertical strips** ②. Screw the **strips** ② onto the TV with the **bolts** ③. Make sure the **strips** ② are at the same height and do not stick out.

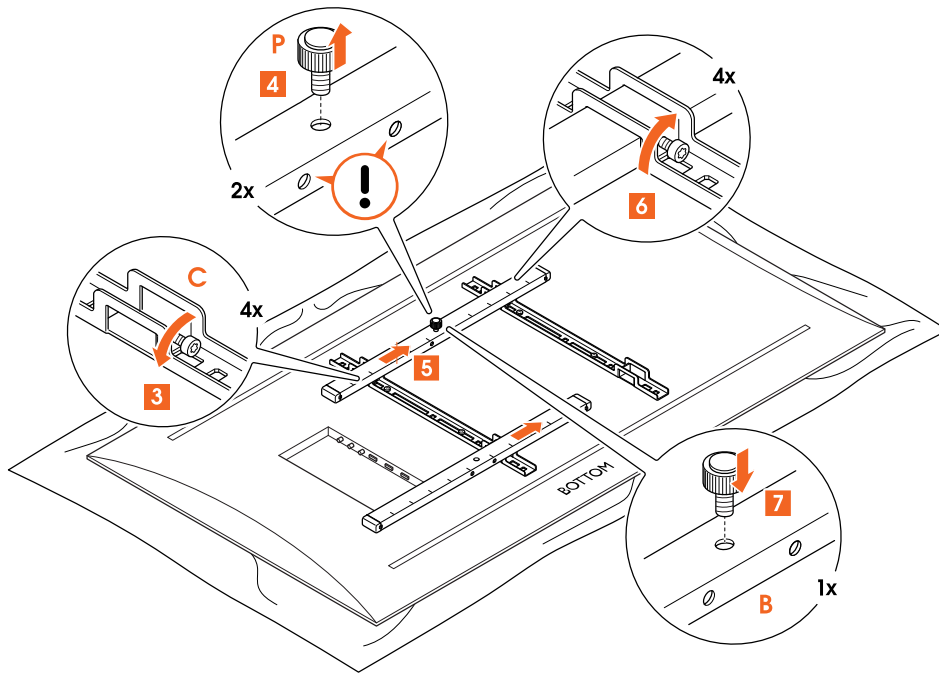


Are you missing any bolts? Or need different ones? The friendly team at Vogel's Consumer Care are waiting to help: vogels.com/contact



Refer to the user manual of your TV for the correct bolt sizes. Make sure bolts and washers are positioned correctly. Use spacers where needed.





3. Loosen the **pre-attached bolts** © with the **allen key** © .
4. For models where the thumbnuts are pre-attached: remove both **thumbnuts** ® from the **horizontal bars** ® .
5. Slide the **horizontal bars** ® through the designated spacing of the **vertical strips** © . Make sure the **bars** ® are placed in a centered position. Notice the holes on the side of the **bars** ® . They need to face downwards.
6. Attach both **bars** ® to the strips by tightening the **pre-attached bolts** © with the **allen key** © .
7. Screw one **thumbnut** ® into the upper bar. Make sure you don't screw it in completely, yet.

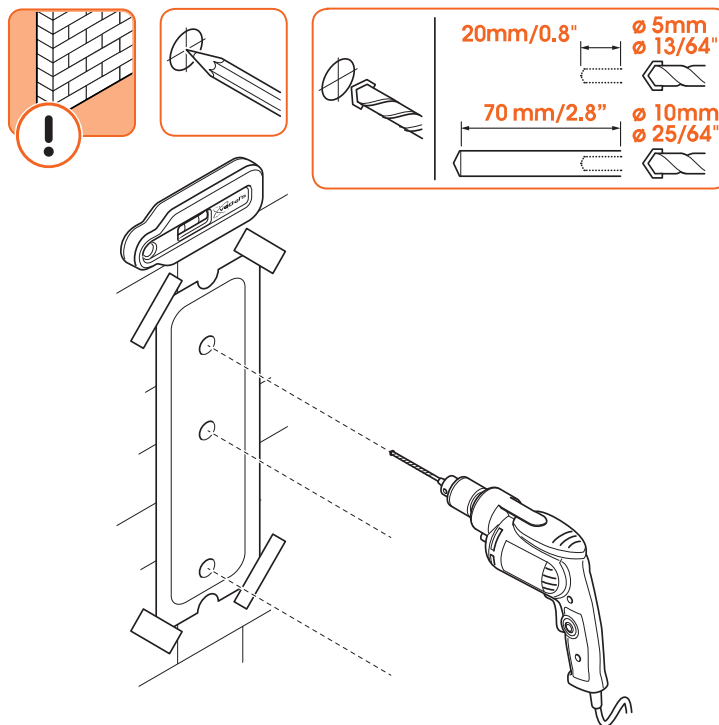
Step 2: Attach the wall mount to the wall

How well do you know your walls? What they're made of matters more than you think...

Concrete / Brick wall



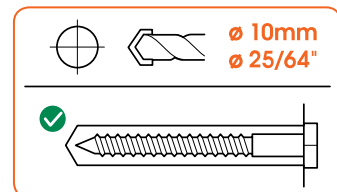
Don't drill yet! Try our free [DrillRight™ AR app](#) to find just the right height and mark the first hole, easily.

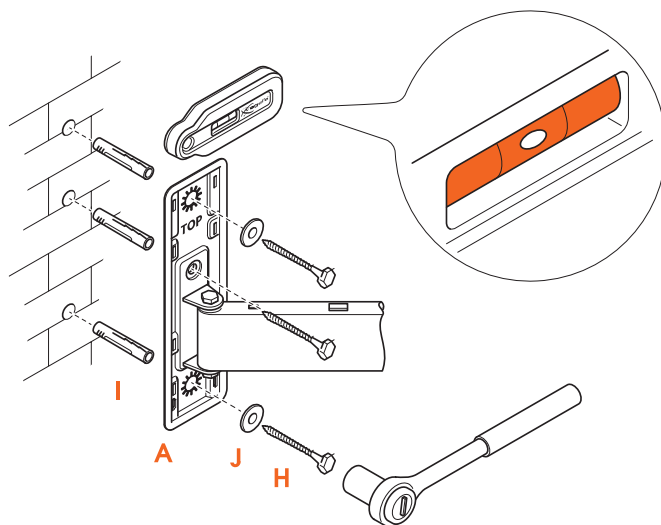
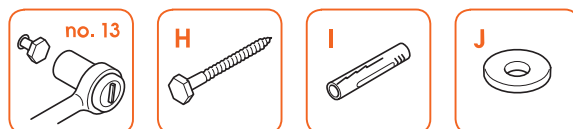


1. Find the perfect spot for drilling with our [DrillRight™ AR app](#) and the included drilling template.
2. Drill the holes.



How deep do you drill? Check the length of the screw (not the plug!) to find the right depth – this stops things from breaking.

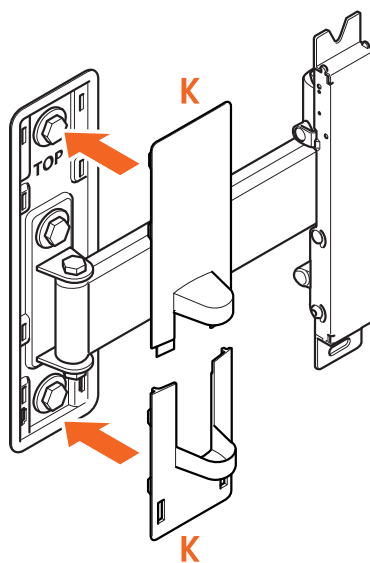




3. Attach the **wall mount** Ⓐ to the wall with the **screws** Ⓜ , **washers** Ⓟ and **plugs** Ⓡ . Use the **spirit level** Ⓒ to level the wall mount.



Lubricate the screws for easy screwing in.

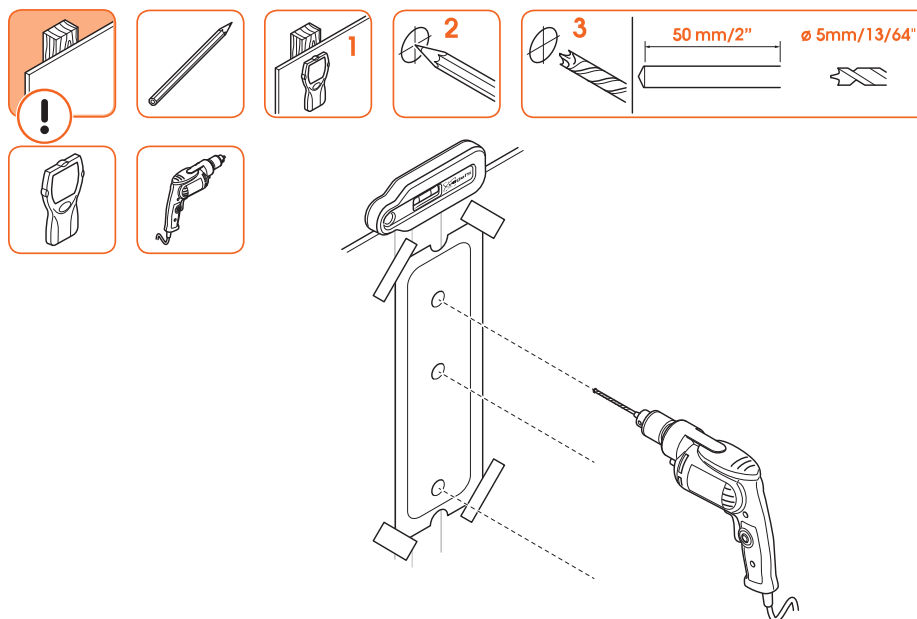


4. Place the **covers** Ⓚ .

Walls with wooden studs



Don't drill yet! Try our free [DrillRight™ AR app](#) to find just the right height and mark the first hole, easily.

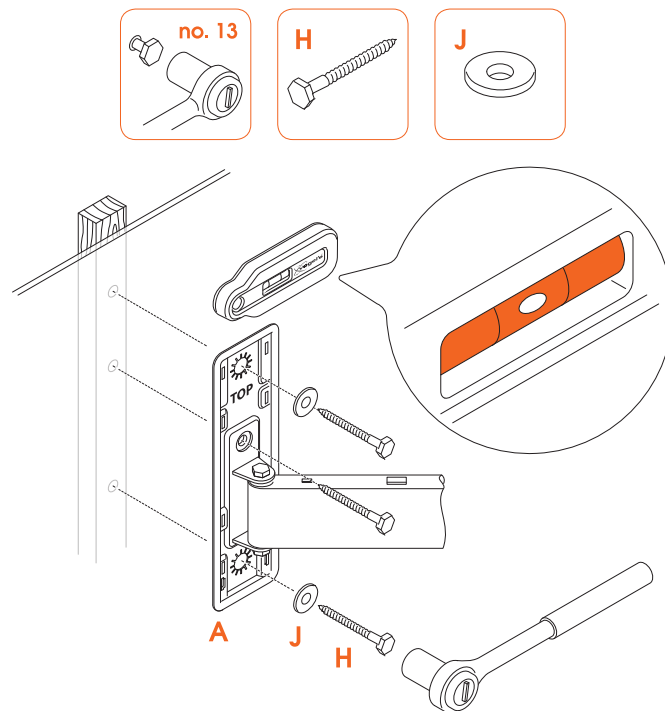


1. Don't just guess! Always use a **stud finder** to determine the position of studs.
2. Find the perfect spot for drilling with our [DrillRight™ AR app](#) and the included drilling template.



Don't destroy your belongings! The wall mount must always be attached to the studs.

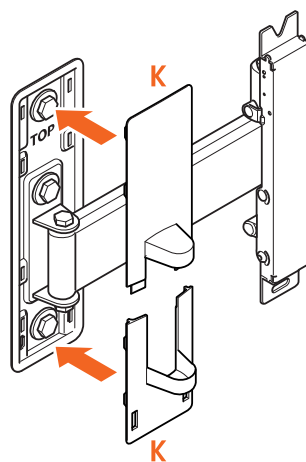
3. Now for the fun part... drilling the holes.



4. Attach the **wall mount** ④ to the wooden wall with the **screws** ⑨ and **washers** ⑩. Use the **spirit level** ⑮ to level the wall mount.



Lubricate the screws for easy screwing in.



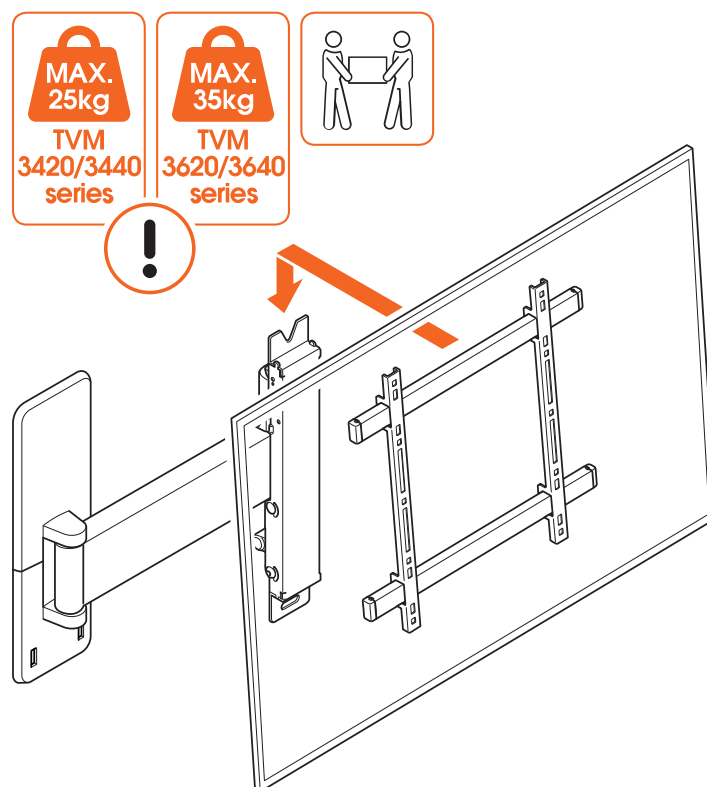
5. Place the **covers** ⑮.

Other wall type / I don't know my wall type

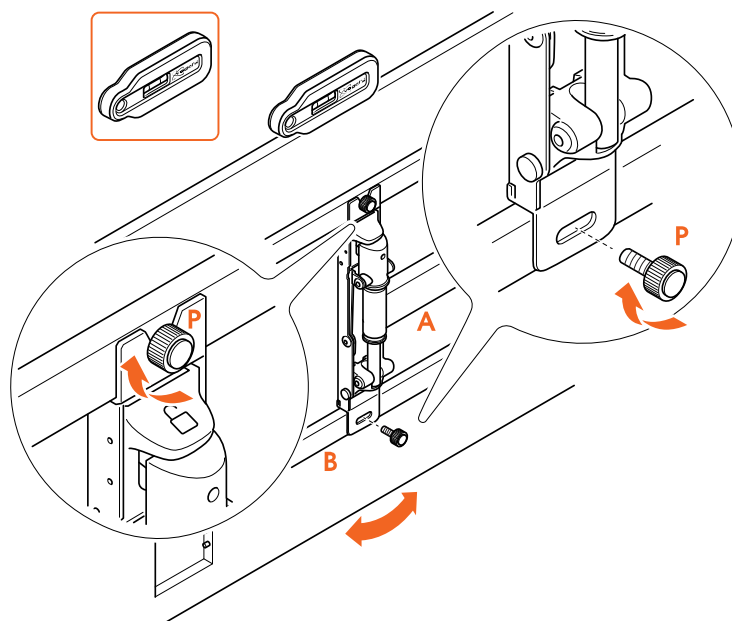


If your wall is a little special – for example, hollow bricks, metal stud walls, wood panels or plasterboard – or you simply aren't sure, don't worry! Just ask your installer, specialist supplier or the Vogel's Consumer Care team at www.vogels.com/contact.

Step 3: Attach the TV to the wall mount



1. Carefully lift and attach the TV to the **wall mount** ④. Place the upper **thumbnut** ⑤ in the top notch of the wall mount.



2. Position the bottom thumbnut through the hole in the wall mount and in the bottom bar.
3. Fasten both **thumbnuts** ® , optionally with an allen key. Make sure the TV is leveled, using the spirit level.



Lifting your TV is a two-person job. Don't be bold!

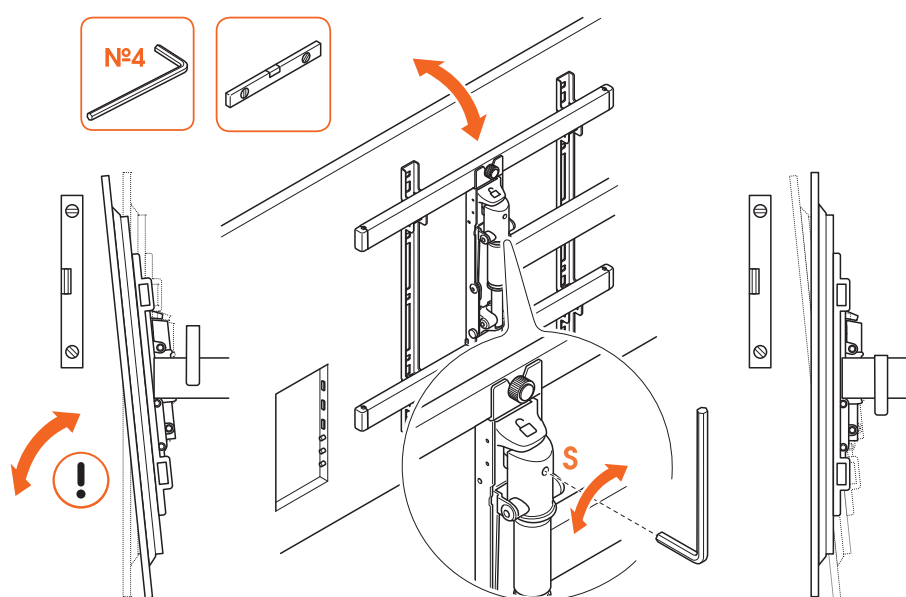
Job done now! Enjoy watching your TV!

Handy features



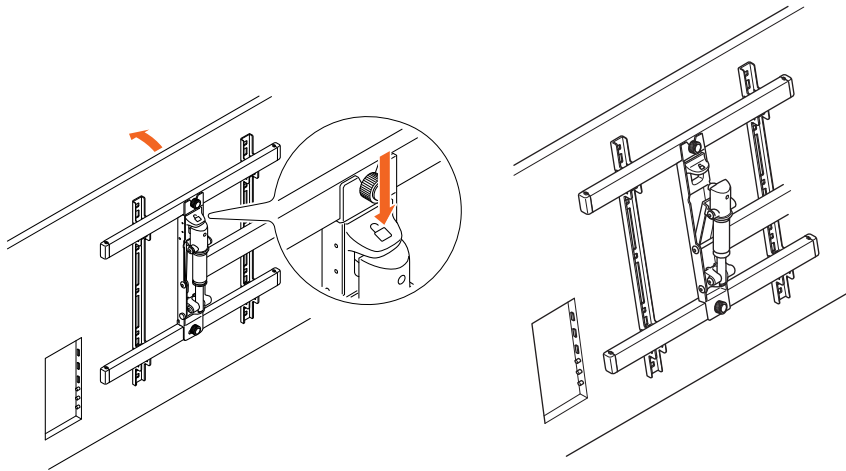
Having a cable mess? Do you need inspiration about how to hide and guide your cables or how to place other TV accessories? Take a look at our website vogels.com!

Vertical and horizontal correction



1. Vertical correction: If the tilt option is not used and the screen still tilts downwards / upwards: tighten / loosen **screw** **S** with an allen key until the screen is vertically leveled.
2. Horizontal correction: If one side of the TV is lower than the other, slightly loosen the bottom **thumbnut** **S**. Level the TV and check with a spirit level on top of the TV. Tighten the thumbnut again, preferably with an allen key.

Tilt to avoid reflections

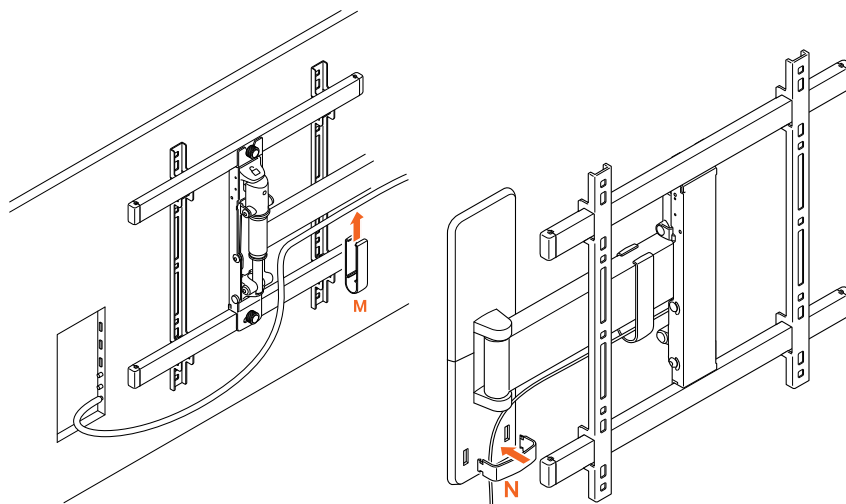


1. Click the TiltAnchor™ button to release the TV from home position.
2. Adjust the tilt angle. Gently pull the top of the screen forward.



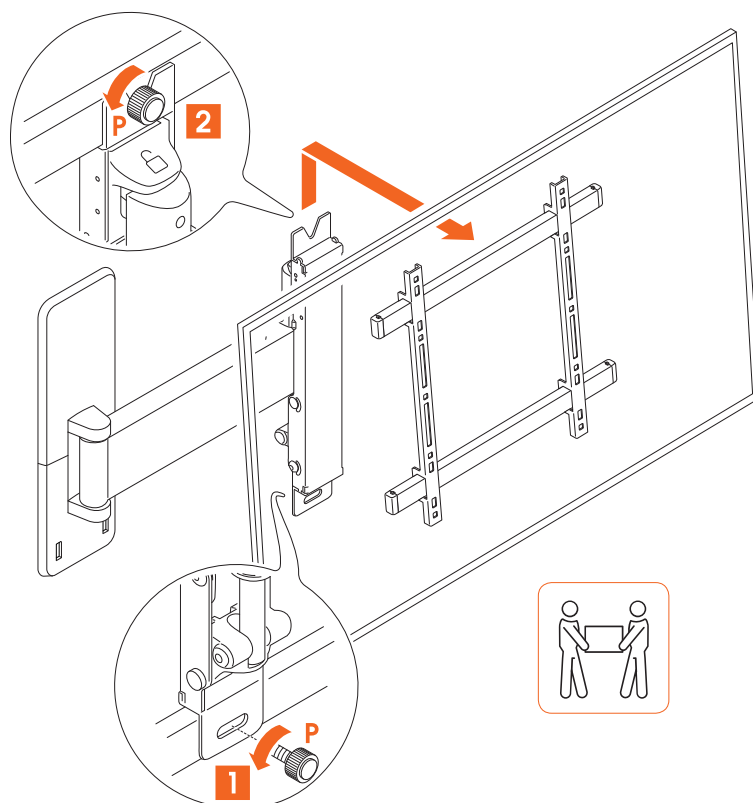
Do not force the screen in the other direction.

Guide your cables



1. Guide the cables.
2. Place the **cable clip** ® over the cables on the lower arm.
3. Place the wall **cable clip** ® over the cables on the wall plate.

Removing your TV



1. Remove the lower **thumbnut** ® and loosen the upper **thumbnut** ® .
2. Remove the TV , and put it down somewhere safe.



Again, lifting your TV is a two-person job. Always get help.

Tell us how you feel!

Your opinion matters more than you might think. It helps us make better products, and helps other customers make informed choices.

Share your feedback, and sign up to win Vogel's products!

Simply visit vogels.com/review for sharing or the Terms and Conditions.

Confused? Unsure? Going crazy?

There's plenty of help waiting for you, online:



info@vogels.com
www.vogels.com/contact



[facebook.com/
VogelsForSure/](https://facebook.com/VogelsForSure/)



[instagram.com/
vogels_official/](https://instagram.com/vogels_official/)



[www.youtube.com/
c/VogelsForSure](https://www.youtube.com/c/VogelsForSure)

Simple troubleshooting

Found a problem you can't fix? Don't panic... try these!

Problem	Cause	Solution
'There are stains on the arms of the wall mount'	The stains are caused by the paper pulp interior in the box. We decided to reduce the amount of plastic in the packaging and therefore there is no plastic bag around the product anymore to prevent from some paper dust on the product. So, these stains might occur.	The stains are easy to remove with a cloth.
'My TV does not remain leveled horizontally, with moving / turning it'	When you level your TV and tighten the thumbnut by hand, it might not be tight enough to stay level.	Level the TV with a spirit level and tighten the thumbnut thoroughly with a 4 mm allen key, instead of by hand.

'I don't have the right bolts for my TV!'	The world of TV technology is always changing – it can be hard to keep up sometimes. So, it might be the case that the correct bolt size is not included... you're just too advanced!	Just ask Vogel's Consumer Care to request a service kit, and we'll send everything you need. Click here to contact Vogel's Consumer Care.
'I have a lot of leftover bolts, is something wrong?'	No, you did it very well! You only need 4 bolts to install the mount to your TV. Because of all the different types of TVs, we have included the most common sizes for the most sold TVs.	Don't waste the other bolts, save them! You can use them for another TV when you buy a new one or use it elsewhere.
'My wall screws have snapped!'	You might not be drilling deep enough... or your drill could be too blunt, so that the hole is too narrow and the screw gets stuck.	Use another hole in the wall plate to fix the wall mount to the wall. Make sure you use a sharp drill of the correct size. Use the size of the screw as indication of the depth to be drilled.

FAQs

'Where can I request the correct bolts for my TV (a service kit)?'	Whatever you need, simply contact your local Vogel's dealer or Vogel's. Click here to contact Vogel's Consumer Care.
'Where can I find installation videos?'	Click or tap the button on the front page of this manual. The installation video can be found at the product page of your product on our website. It can also be found on our YouTube channel: www.youtube.com/c/VogelsForSure
'What if I need spare parts?'	If you require a spare part, please contact your local dealer or Vogel's. Click here to contact Vogel's Consumer Care.
'Where can I find the drilling template?'	The drilling template is printed on the inlay card in the box. You can cut it out for your convenience.
'How high do I need to hang my TV?'	The center of your TV should ideally be positioned at eye level, while seated. Download and use the free DrillRight™ AR app to determine the height of the TV and to mark the first hole.
'How high do I need to hang my TV in case of a tilt mount?'	When a wall mount with tilt function is used, your TV can be mounted above eye level.

'Which bolts or screws do I need to use?'	Use all wall screws and four bolts for securing your TV. Vogel's offers a complete assembly kit with all mounting materials included in the box, for both your TV and wall. Do you miss the correct bolts for your TV? Please contact your local Vogel's dealer. Click here to contact Vogel's Consumer Care.
'Why do you use Fischer© plugs?'	The Fischer© DuoPower plug is widely regarded as the best standard in plugs. Don't settle for less!
'What is VESA?'	VESA is a standard pattern of mounting location holes on the back of a TV which allows many standard TV mounts to be easily fitted to your TV.

Go green!

We care about the planet. If you're getting rid of the packaging or the TV mount itself, please visit your local recycling facility, or contact your municipal office. Recycling matters!



Guarantee



Thanks again for choosing Vogel's! Durability is paramount in the development and production of our products. For this reason, we are able to provide a product guarantee for the reasonable service life of all of our wall mounts. We resolve any issues regarding product complaints or returned products and assess all complaints based on usage.

If your product is not functioning properly due to material faults or manufacturing defects, we will repair it free of charge or replace it at our own discretion.

If you have any problems with our product or want to know whether the guarantee is applicable, please:

1. Complete the contact form or mail our Consumer Care Team. Preferably, please add a picture.
2. Within 2 business days you will be contacted by our local Vogel's distributor.
3. If the guarantee is invoked, the product should be returned, together with the original purchase document (invoice, sales slip or cash receipt). The purchase document should clearly show the name of the supplier and the date of purchase. You will be informed about the specific return address and further procedure.

Vogel's guarantee shall lapse in the following cases:

- If the product has not been installed or used in accordance with the instructions;
- If applicable, if the holes in the wall have not been properly drilled in accordance with the Vogel's installation instructions for the applicable wall type;
- If the product has been altered or repaired by someone other than Vogel's;
- If a fault arises due to external causes (outside the product) such as for example lightning, water nuisance, fire, scuffing, exposure to extreme temperatures, weather conditions, solvents or acids, wrong use or negligence;
- If the product is used for different equipment than is mentioned on or in the packaging.

Do you have any other questions? Please make use of our contact form.