

The Hisense logo is displayed in a bold, white, sans-serif font. The background of the entire page features a dark grey gradient on the left, transitioning into several broad, sweeping, light grey curved bands that sweep from the bottom left towards the top right, creating a sense of motion and modernity.

# Hisense

life reimagined

## USER'S OPERATION MANUAL


Before operating this unit, please read this manual thoroughly, and retain for future reference

FV341N4EC1

English

## Contents

Safety and warning information.....2	Helpful hints and tips..... 15
Installing your new appliance.....7	Cleaning and care.....16
Description of the appliance.....11	Troubleshooting.....17
Display controls.....12	Disposal of the appliance.....19
Using your appliance.....14	

 This appliance is in accordance with the following EU guidelines:2006/95/EC and 2004/108/EC and 2009/125/EC and EC.643/2009 and 2002/96/EC



## Safety and warning information

For your safety and correct usage, before installing and first using the appliance, read this user manual carefully, including its hints and warnings.

To avoid unnecessary mistakes and accidents, it is important to make sure that all people using the appliance are thoroughly familiar with its operation and safety features. Save these instructions and be sure that they remain with the appliance if it is moved or sold, so that anyone using it throughout its life will be properly informed on usage and safety notices.

For the safety of life and property, keep the precautions of these user's instructions as the manufacturer is not responsible for damages

caused by omission.

### **Safety for children and others who are vulnerable**

- This appliance can be used by children aged from 8 years and above, and persons with reduced physical, sensory or mental capabilities or lack of experience and knowledge if they have been given supervision or instruction concerning use of the appliance in a safe way and understand the hazards involved. Children shall not play with the appliance. Cleaning and user maintenance should not be carried out by children without supervision. Keep all packaging away from children as there is risk of suffocation.

- If you are discarding the appliance, pull the plug out of the socket, cut the connection cable (as close to the appliance as you can) and remove the door to prevent children from suffering an electric shock or from closing themselves inside.
- If this appliance, featuring a magnetic door seals, is to replace an older appliance having a spring lock (latch) on the door or lid, please make the spring lock unusable before you discard the old appliance. This will reduce the risk of trapping children or animals inside.

### General safety



- **WARNING** — This appliance is designed to be used in domestic households and not intended for use in retail or commercial environments.

- **WARNING** — Do not store explosive substances such as aerosol cans with a flammable propellant in this appliance.
- **WARNING** — If the supply cord is damaged, it must be replaced by the manufacturer, its service agent or similarly qualified persons in order to avoid a hazard.
- **WARNING** — Keep ventilation openings in the appliance enclosure or in any built-in structure clear of obstruction.
- **WARNING** — Do not use mechanical devices or other means to accelerate the defrosting process, other than those recommended by the manufacturer.
- **WARNING** — Do not damage the refrigerant circuit.
- **WARNING** — Do not use electrical appliances inside the food storage compartments of the appliance, unless they are of the type recommended by the manufacturer.
- **WARNING** — The refrigerant and insulation are flammable.

When disposing of the appliance, do so only at an authorized waste disposal center. Do not expose to flame.

## Refrigerant

The refrigerant isobutene (R600a) is contained within the refrigerant circuit of the appliance. This is a natural gas with a high level of environmental compatibility, which is nevertheless flammable. During transportation and installation of the appliance, ensure that none of the components of the refrigerant circuit becomes damaged.

The refrigerant (R600a) is flammable.



### **Caution: risk of fire**

If the refrigerant circuit is damaged:

- Avoid naked flames and sources of ignition.
- Thoroughly ventilate the room in which the appliance is situated.

It is dangerous to alter the specifications or modify this product in any way.

Any damage to the cord may cause a shortcircuit, fire, and/or electric shock.



### **Electrical safety**

- 1.The power cord must not be lengthened.
- 2.Make sure that the power plug is not crushed or damaged. A crushed or damaged power plug may overheat and cause a fire.
- 3.Make sure that you can access the main plug of the appliance.
- 4.Do not pull the main cable.
- 5.If the power plug socket is loose, do not insert the power plug. There is a risk of electric shock or fire.
- 6.You must not operate the appliance without the interior lighting lamp cover.
- 7.The fridge should only be supplied with single phase alternating current of 220 ~ 240V / 50Hz . If the supply fluctuates outside this range an automatic A.C. voltage regulator of more than 350W should be used. The fridge should be plugged into an adequately earthed supply

---

## Daily use

- Do not store flammable gas or liquids in the appliance, there is a risk of explosion.
  - Do not operate any electrical appliances in the appliance (e.g. electric ice cream makers, mixers etc.).
  - When unplugging always pull the plug from the mains socket. Do not pull on the cable.
  - Do not place hot items near the plastic components of this appliance.
  - Do not place food products directly against the air outlet on the rear wall.
  - Store pre-packed frozen food in accordance with the frozen food manufacture's instructions.
  - The manufacture's storage recommendations should be strictly adhered to. Refer to relevant instructions for storage.
- Do not place carbonated or fizzy drinks in the freezer compartment as it creates pressure on the container, which may

Cause it to explode, resulting in damage to the appliance.

- Frozen food can cause frost burns if consumed straight from the freezer compartment.
  - Do not place the appliance in direct sunlight.
  - Keep burning candles, lamps and other items with naked flames away from the appliance
  - The appliance is only intended for keeping food and/or beverages for normal household consumption as explained in this instruction booklet
- The appliance is heavy. Care should be taken when moving it.
- Do not remove nor touch items from the freezer compartment if your hands are damp/wet, as this could cause skin abrasions or frost/freezer burns.
  - Never use the base, drawers, doors etc. to stand on or as supports. Frozen food must not be refrozen once it has been thawed out.

- To avoid items falling and causing injury or damage to the appliance, do not overload the door racks or put too much food in the crisper drawers.

### **Caution!**

#### **Care and cleaning**

- Before performing maintenance, switch off the appliance and disconnect the mains plug from the mains socket.
- Do not clean the appliance with metal objects, steam cleaners, ethereal oils, organic solvents or abrasive cleansers.
- Do not use sharp objects to remove frost from the appliance. Use a plastic scraper.

#### **Installation Important!**

- For electrical connection carefully, follow the instructions given in this manual.  
Unpack the appliance and check for damage. Do not connect the appliance if it is damaged. Report possible damage immediately to your retailer. In this case, please retain packing.

- It is advisable to wait at least four hours before connecting the appliance to avoid damaging the compressor.
- Adequate air circulation should be provided around the appliance. To achieve sufficient ventilation. Please follow the instructions relevant to installation.
- Wherever possible the back of the product should not be too close to flammable materials as some components are hot in normal operation.  
The appliance must not be located close to radiators or cookers.
- Make sure that the mains plug is accessible following installation of the appliance.

#### **Service**

- This product must be serviced by an authorized Service Center or Service Agent, and only genuine spare parts must be used

## Installing your new appliance

Before using the appliance for the first time, you should be informed of the following tips.

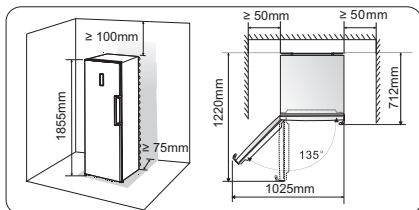
### Ventilation of appliance



In order to improve efficiency of the cooling system and save energy, it is necessary to

maintain good ventilation around the appliance for the dissipation of heat. For this reason, sufficient clear space should be available around the refrigerator.

Suggest: It is advisable for there to be at least 75mm of space from the back to the wall, at least 100mm from its top, at least 50mm from its side to the wall and a clear space in front to allow the doors to open 135°. As shown in follow diagrams.



### Note:

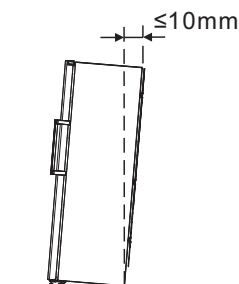
- This appliance performs well within the climate class from SN to T shown in the table below.
- It may not work properly if left at a temperature above or below the indicated range for a long period.

Climate class	Ambient temperature
SN	+10°C to +32°C
N	+16°C to +32°C
ST	+16°C to +38°C
T	+16°C to +43°C

- Stand your appliance in a dry place to avoid high moisture.
- Keep the appliance out of direct sunlight, rain or frost. Stand the appliance away from heat sources such as stoves, fires or heaters.

### Leveling of appliance

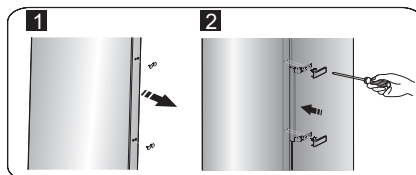
- For sufficient leveling and air circulating in the lower rear section of the appliance, the bottom feet may need to be adjusted. You can adjust them manually by hand or by using a suitable spanner.
- To allow the doors to self-close, tilt the top backwards by about 10mm.



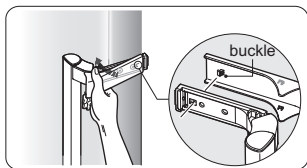
### Installing the door handles

For the convenience of transportation, the door handles are separately provided in a plastic bag, you can install the door handles as follows.

1. Lever screw covers on the right side of the door, and then put them back to the plastic bag.
2. Match the handle on the right side of the door, keeping axes of screw holes in the handle and the door in a line, as the picture shows.
3. Fix the handle with the special screws provided in the plastic bag. And then install the handle covers.



**Note:** Install the handle cover as the follow figure shows :button the buckle firstly , and then close the cover from the inside until you hear the sound of "popping" .

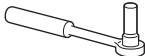
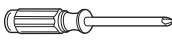
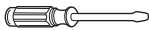



### Reversing the door

The side at which the door opens can be changed, from the left side (as supplied) to the right side, if **required**.

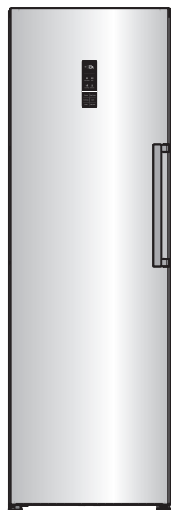
**Warning!** When reversing the door, the appliance must not be connected to the mains. Ensure that the plug is removed from the mains socket.

Tools you will need:

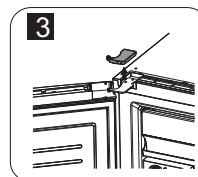
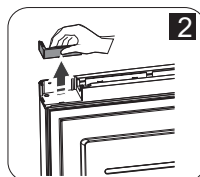
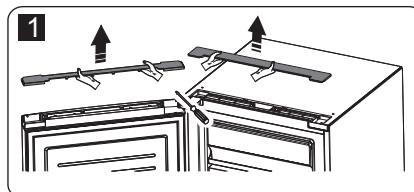
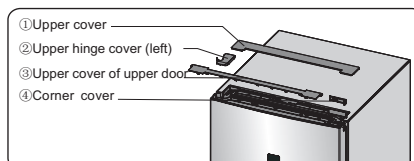
	
8mm socket wrench	Cross-shaped screwdriver
	
Thin-blade screwdriver	8mm wrench

**Note:** When required, tilt the refrigerator back in order to gain access to the base, you should rest it on soft foam packaging or similar material to avoid damaging the backboard of the refrigerator. To reverse the door, the following steps are generally recommended.

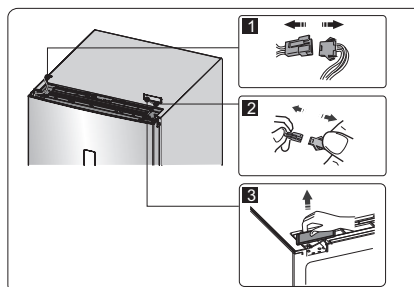
1. Stand the refrigerator upright.



2. Open part ① on top of the refrigerator body from left side and then **remove** part ③ and part ④ on the door in the same way. **Remove** part ② and put it back to the plastic bag.

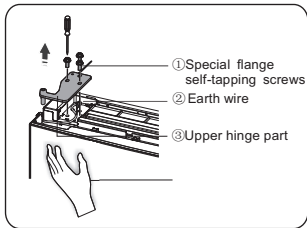


3. Disconnect electrical connector ① as well as electrical connector ② and then **remove** part ③.



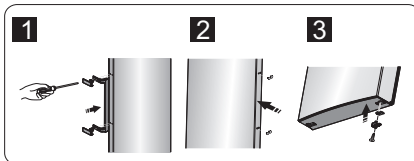
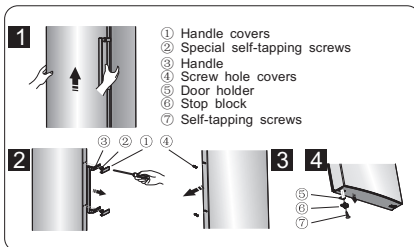
4. Remove the screws ①, **loosen** wire ②, and remove part ③.





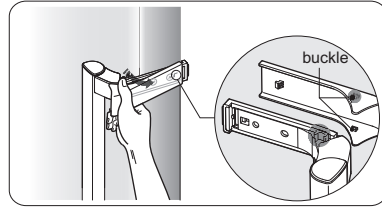
**Note:** Please hold the door by hand during step 4 to prevent door dropping.

5. Remove the door and place it on a smooth surface with its panel upwards. Lever part① and part④, then **loosen** screws②, as shown in the picture. Change handle③ to the left side, then install screws②, part① and part④ in turn. **Loosen** screws⑦, detach part⑥ and part⑤, turn part ⑥ over and then install part⑤ and part⑥ to the right side with screws⑦.

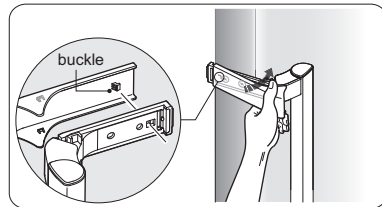


**Note:**  
Please note the following

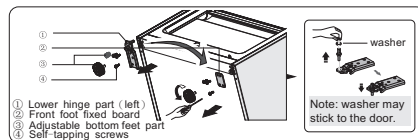
**Note 1:** Remove the handle cover as the following figure shows :bend the upper and lower wings outwards and pull the upper buckle away from the handle, then slide the handle cover off the handle.



**Note 2:** Install the handle cover as the following figure shows : locate the buckle first, and then close the cover from the inside until you hear a clicking sound.

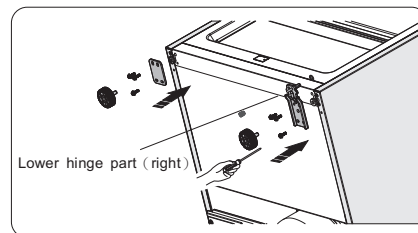


6. **Tilt the refrigerator back**, remove part③ and then loose screws④ . Remove part ② and part①.

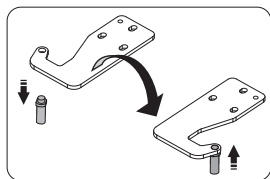


7. Screw out lower hinge, change it to the near hole site, and then screw up and mount washer.

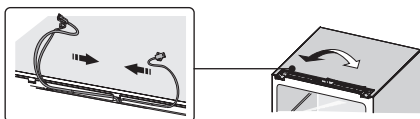
8. Just remount to the step 6, change part① to right and part② to left and then fix them with screws④. Finally install part③.



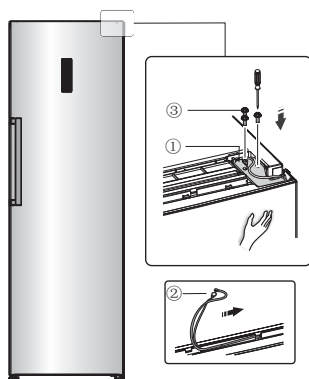
9. Screw out the upper hinge axis, turn the upper hinge over and fix axis on it. Then place it at side for use.



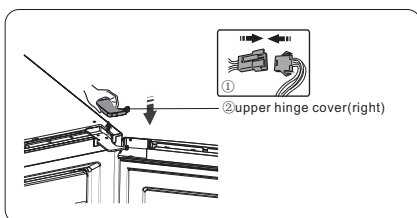
10. Exchange wires both in the left and right slots of refrigerator body.



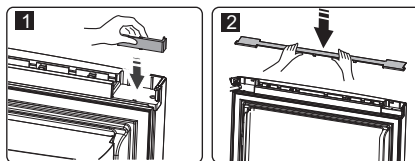
11. Move the door to appropriate position, adjust part① and the door. Move the connecting wire② in the slot of the door from left to right, and then fix part① and wire② by screws③. (Please hold the door by hand when installing)



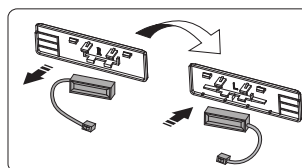
12. Connect electrical connector① in accordance with step 3 and then install part② (which is in the plastic bag).



13. Reverse part① by 180° and install it onto the left corner of the door, then mount part②. (both of which are taken down in step 2)

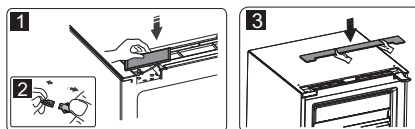


14. Take the reed switch out of the coping block(part③ in step 3) and mount it on another block for use (which is with mark "L" in the plastic bag). Put the coping block just removed back to the plastic bag.



**Note:** Make sure the reed switch is correctly fitted into the coping block.

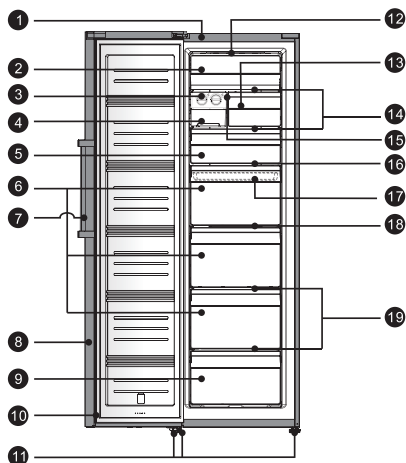
15. Install part ①, connect the wire connector②, and then install part③.



## Description of the appliance

1. Cabinet
2. Flap cover
3. Twist ice maker
4. Ice storage box
5. Upper freezer drawer
6. Middle freezer drawer(huge box)
7. Easy handle
8. Freezer door
9. Lower freezer drawer
10. Freezer door seal
11. Adjustable bottom feet
12. LED light
13. Narrow freezer drawer
14. Glass shelf
15. Shelf bracket
16. Upper shelf
17. Small storage box(inside)
18. Middle shelf
19. Lower shelf

View of the appliance



### Optional part list

Part	Model	RS-34WC4SBA/CLA1	RS-34WC4SBA/CLA2	RS-34WC4SIA/CLA1-005 FV341N4EC1
Top LED light		X	X	✓
Twist ice maker		X	✓	✓
Ice cube tray		X	✓	✓
Common handle		✓	✓	X
Easy handle		X	X	✓
Small storage box		X	X	✓

**Note:** Due to unceasing modification of our products, your refrigerator may be slightly different from this instruction manual, but its functions and **usage** methods remain the same. To get more space in the freezer, you can remove drawers (except lower freezer drawer), install bracket and integrative ice maker/twistable ice tray.

## Display controls

Use your appliance according to the following control regulations, your appliance has the corresponding functions and modes as the control panels showed in the pictures below. When the appliance is powered on for the first time, the backlighting of the icons on display panel starts working. If no buttons have been pressed and the doors are closed, the backlighting will turn off.



### Controlling the temperature

We recommend that when you start your refrigerator for the first time, the temperature for the refrigerator is set to -18°C. If you want to change the temperature, follow the instructions below.

**Caution!** When you set a temperature, you set an average temperature for the whole refrigerator cabinet. Temperatures inside each compartment may vary from the temperature values displayed on the panel, depending on how much food you store and where you place them. Ambient temperature may also affect the actual temperature inside the appliance.

### 1. Freezer

Press “Freezer” to set freezer temperature between -14°C and -24°C as needed, and control panel will display corresponding values according



### 2. Super Freeze



Super Freeze will quickly lower the temperature within the freezer so food will freeze faster. This can lock in the vitamins and nutrients of fresh food and keep food fresh longer.

- Press “Super Freeze” button to activate the super freeze function. The light will come on and the freezer temperature setting displays -24°C.

- In case of the maximum amount of food to be frozen, please wait about 24 h.

- Super freeze automatically switches off after 26 hours.

- When super freeze function is on you can switch off super freeze function by pressing “Super Freeze” or “Freezer” button, then the freezer temperature setting will revert back to the previous setting or the “Eco Energy” function will be activated.

### 3. Eco Energy



The function makes the freezer work in a power saving mode which is useful for when you are away on holiday by reducing energy consumption. Pressing “Eco Energy” button for 3 seconds until the light comes on.

- When the Eco Energy function is activated, the temperature of the freezer is automatically switched to -15°C to minimize the energy consumption.

- When the Eco Energy function is on, you can switch it off by pressing any button or “Eco Energy” and “Freezer” button. The freezer temperature setting will revert back to the previous setting.

#### 4. Alarm



In case of alarm, “Alarm” icon will be on and there will be buzzing sound. Press “Alarm” key to clear alarm and then “Alarm” icon will turn off and stop buzzing.

##### Door Alarm

- When the door is open for over 2 minutes, the door alarm will sound. In case of door alarm, buzzer will sound 3 times every 1 minute and will stop alarming automatically after 10 minutes.
- To save energy, please avoid keeping the door open for a long time when using the appliance. The door alarm can also be cleared by closing the door.

##### Temperature alarm

- If freezer temperature is too high due to power failure or other reasons, there will be a temperature alarm and the freezer temperature setting displays “--”.
- In case of temperature alarm, buzzer will sound constantly for 10 times and then stop automatically.
- In case of temperature alarm, press “Alarm” button for 3 seconds to check the highest freezer temperature. The temperature value and “Alarm” icon will simultaneously flash for 5 seconds. This function may not be available according to the model.

**Caution!** When power is restored, it is normal that the temperature alarm appears, this can be cleared by pressing “Alarm”.

#### 5. Power

If you want to clean the appliance or stop using it, you can turn the appliance off by pressing “Power” button.

- When the refrigerator is working, you can switch the appliance off by pressing “Power” button for 5 seconds, meanwhile the display panel will be turned off.

**Important!** Do not store any food in the fridge during this time.

- When the appliance is power off, you can switch the appliance on by pressing “Power” button for 1 second, and the refrigerator returns to the previous temperature setting.

#### 6. Child Lock



You can press the “Child Lock” button in case children **alter settings**

**inadvertently.** When the Child Lock function is activated, pressing the other buttons would not work except “Alarm” button.

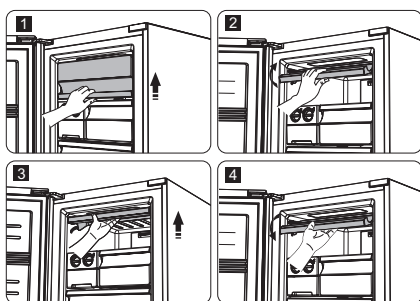
- When the appliance is unlocked, you can activate the child lock function by pressing “Child Lock” button for 3 seconds, **When activated the** “Child Lock” icon will be illuminated.
- When the child lock function is activated, you can switch off this function by pressing “Child Lock” button for 3 seconds. The “Child Lock” icon will be turned off.

## Using your appliance

Your appliance has been supplied with various accessories and use of these items is described below :

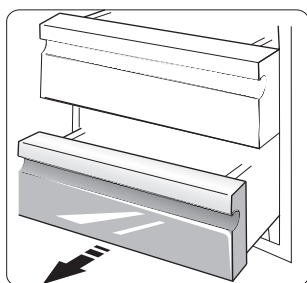
### Flap cover

- You can turn the flap cover upwards when you want to take food out of the top chamber.
- Before you open or close the flap cover, you must lift it to the guide track first. Then, the flap cover can slide up or down the guide tracks.



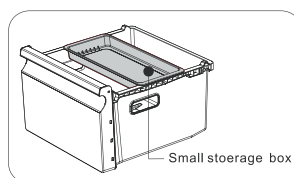
### Freezer Drawer

- It is used to store food which needs to be frozen, including meat, fish, ice cream, etc.



### Small storage box

- It is used to store smaller food items which need to be frozen, such as frozen dessert, etc.
- It can only be put into the huge box(the uppermost one) or the upper drawer.

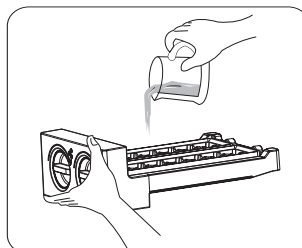


### Twistable ice tray

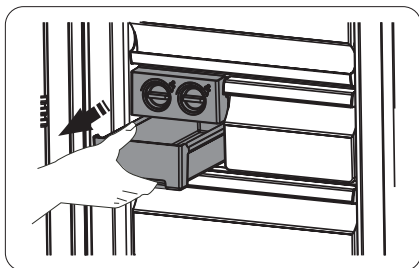
**Note:** If the ice tray is used for the first time or has not been used for a long time, please clean it before using.

- The twist ice tray is used to make and deposit ice cubes. You should use it as follows.

1. Pull out the twistable ice tray from the installation bracket.
2. Pour water into the ice trays and the water level shall not exceed the maximum line.

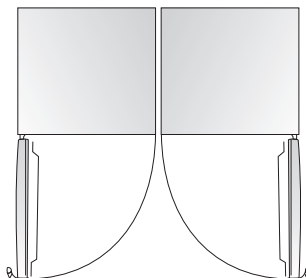


3. Place the filled ice tray back to the bracket.
4. When ice cubes form, twist the knobs clockwise and the ice will drop into the ice box below.
5. Ice cubes can be stored in the ice box **until needed**.



### Installing refrigerators in pairs

- Your freezer can be installed with a fridge in pairs.
- It can be installed by using a linking kit.



## Helpful hints and tips

### Energy saving tips

We recommend that you follow the tips below to save energy.

- Try to avoid keeping the door open for long periods in order to conserve energy.
- Ensure the appliance is away from any sources of heat. (Direct sunlight, electric oven or cooker etc.)
- Don't set the temperature colder than necessary.
- Don't store warm food or evaporating liquid in the appliance.
- Place the appliance in a well ventilated, humidity free, room. Please refer to Installing your new appliance chapter.
- The diagram shows the correct combination for the drawers, crisper and shelves. Do not adjust the combination as this is designed to be the most energy efficient configuration.

### Hints for fresh food refrigeration

- Do not place hot food directly into the refrigerator, the internal temperature will increase resulting in the compressor having to work harder and will consume more energy.
- Do cover or wrap the food, particularly if it has a strong flavor.
- Place food properly so that air can circulate freely around it.

### Hints for refrigeration

- **Meat (All Types)** Wrap in polythene food: wrap and place on the glass shelf above the vegetable drawer. Always follow food storage times and use by dates suggested by manufacturers.
- **Cooked food, cold dishes, etc.:** They should be covered and may be placed on any shelf.
- **Fruit and vegetables:** They should be stored in the special drawer provided.

- Butter and cheese: Should be wrapped in airtight foil or plastic film wrap.

- Milk bottles:

Should have a lid and be stored in the door racks.

### Hints for freezing

- When first starting-up or after a period out of use, let the appliance run at least 2 hours on the higher settings before putting food in the compartment.

- Prepare food in small portions to enable it to be rapidly and completely frozen and to make it possible to subsequently thaw only the quantity required.

- Wrap up the food in aluminum foil or polyethylene food wraps which are airtight.

- **Do not allow fresh, unfrozen food to touch the food which is already frozen to avoid partially thawing the frozen food.**

- Iced products, if consumed immediately after removal from the freezer compartment, will probably cause frost burns to the skin.

- It is recommended to label and date each frozen package in order to keep track of the storage time.

### Hints for the storage of frozen food

- Ensure that frozen food has been stored correctly by the food retailer.

- Once defrosted, food will deteriorate rapidly and should not be re-frozen. Do not exceed the storage period indicated by the food manufacturer.

### Switching off your appliance

If the appliance needs to be switched off for an extended period, the following steps should be taken prevent mould on the appliance.

1. Remove all food.
2. Remove the power plug from the mains socket.
3. Clean and dry the interior thoroughly.
4. Ensure that all the doors are wedged open slightly to allow air to circulate.

## Cleaning and care

For hygienic reasons the appliance (including exterior and interior accessories) should be cleaned regularly at least every two months.

**Caution!** The appliance must not be connected to the mains during cleaning. Danger of electrical shock! Before cleaning switch the appliance off and remove the plug from the mains socket.

### Exterior cleaning

To maintain good appearance of your appliance, you should clean it regularly.

- Wipe the digital panel and display panel with a clean, soft cloth.

- Spray water onto the cleaning cloth instead of spraying directly on the surface of the appliance. This helps ensure an even distribution of moisture to the surface.

- Clean the doors, handles and cabinet surfaces with a mild detergent and then wiped dry with a soft cloth.



**Caution!**

-Don't use sharp objects as they are likely to scratch the surface.  
 -Don't use Thinner, Car detergent, Clorox, ethereal oil, abrasive cleansers or organic solvent such as Benzene for cleaning. They may damage the surface of the appliance and may cause fire.

**Interior cleaning**

You should clean the appliance interior regularly. It will be easier to clean when food stocks are low.

-Wipe the inside of the fridge freezer with a weak solution of bicarbonate of soda, and then rinse with warm water using a wrung-out sponge or cloth.  
 -Wipe completely dry before replacing the shelves and baskets. Thoroughly dry all surfaces and removable parts.

Although this appliance automatically defrosts, a layer of frost may occur on the refrigerator's interior walls if the door is opened frequently or kept open too long. If the frost is too thick wait until food stocks are low and proceed as follows:

1.Remove existing food and accessories baskets, unplug the appliance from the mains power and leave the doors open. Ventilate the room thoroughly to accelerate the thawing process.

2.When defrosting is completed, clean your freezer as described above.

**Caution!** Don't use sharp objects to remove frost from the refrigerator. Only after the interior is completely dry should the appliance be switched back on and plugged back into the mains socket.

**Door seal cleaning**

Take care to keep door seals clean. Sticky food and drinks can cause seals to stick to the cabinet and tear when you open the door. Wash seal with a mild detergent and warm water. Rinse and dry it thoroughly after cleaning.

**Caution!** Only after the door seals are completely dry should the appliance be powered on.

**Replacing the LED light**

**Warning:** The LED light should not be replaced by the user. If the LED light is faulty, contact the customer helpline for assistance.

To replace the LED light, the following steps can be used:

- 1.Unplug your appliance.
- 2.Remove light cover by pushing up and out.
- 3.Hold the LED cover with one hand and pull it with the other hand while pressing the connector latch.
- 4.Replace LED light and snap it correctly in to place.

**Troubleshooting**

If you experience a problem with your appliance or are concerned that the appliance is not functioning correctly, you can carry out some easy checks before calling for service, please see below. You can carry out some easy checks according to this section before calling for service.

**Warning!** Don't try to repair the appliance yourself. If the problem persists after you have made the checks mentioned below, contact a qualified electrician, authorized service engineer or the shop where you purchased the product.

Problem	Possible cause & Solution
Appliance is not working correctly	Check whether the power cord is plugged into the power outlet properly.
	Check whether the "Power" function is on by pressing the "power" button for 1 second.
	Check the fuse or circuit of your power supply, replace if necessary.
	The ambient temperature is too low. Try setting the chamber temperature to a colder level to solve this problem.
	It is normal that the refrigerator is not operating during the automatic defrost cycle, or for a short time after the appliance is switched on to protect the compressor.
Odours from the compartments	The interior may need to be cleaned.
	Some food, containers or wrapping cause odours.
Noise from the appliance	<p>The sounds below are quite normal:</p> <ul style="list-style-type: none"> <li>● Compressor running noises.</li> <li>● Air movement noise from the small fan motor in the fridge compartment or other compartments.</li> <li>● Gurgling sound similar to water boiling.</li> <li>● Popping noise during automatic defrosting.</li> <li>● Clicking noise before the compressor starts.</li> </ul>
	<p>Other unusual noises are due to the reasons below and may need you to check and take action:</p> <ul style="list-style-type: none"> <li>● The cabinet is not level.</li> <li>● The back of appliance touches the wall.</li> <li>● Bottles or containers fallen or rolling.</li> </ul>
The motor runs continuously	<p>It is normal to frequently hear the sound of the motor, it will need to run more when in following circumstances:</p> <ul style="list-style-type: none"> <li>● Temperature setting is set colder than necessary</li> <li>● A large quantity of warm food has recently been stored within the appliance.</li> <li>● The temperature outside the appliance is too high.</li> <li>● Doors are kept open too long or too often.</li> <li>● After your installing the appliance or it has been switched off for a long time.</li> </ul>
A layer of frost occurs in the compartment	Check that the air outlets are not blocked by food and ensure food is placed within the appliance to allow sufficient ventilation. Ensure that door is fully closed. To remove the frost, please refer to cleaning and care chapter.
Temperature inside is too warm	You may have left the doors open too long or too frequently; or the doors are kept open by some obstacle; or the appliance is located with insufficient clearance at the sides, back or top.

## Disposal of the appliance

It is prohibited to dispose of this appliance as household waste.


### Packaging materials

Packaging materials with the recycle symbol are recyclable. Dispose of the packaging into a suitable waste collection container to recycle it.

### Before disposal of the appliance

1. Pull out the mains plug from the mains socket.
2. Cut off the power cord and discard with the mains plug.

**Warning!** Refrigerators contain refrigerant and gases in the insulation. Refrigerant and gases must be disposed of professionally as they may cause eye injuries or ignition. Ensure that tubing of the refrigerant circuit is not damage prior to proper disposal.

	<p>Correct Disposal of this product</p> <p>This marking indicates that this product should not be disposed with other household wastes throughout the EU. To prevent possible harm to the environment or human health from uncontrolled waste disposal, recycle it responsibly to promote the sustainable reuse of material resources. To return your used device, please use the return and collection systems or contact the retailer where the product was purchased. They can take this product for environmental safe recycling.</p>
---	---

**220-240V~, 50Hz, R600a ;**

**Hisense UK Ltd**

**Unit 2 , Meadow Court , Millshaw ,**

**Leeds LS11 8LZ**

**For Service please call : 0844 346 0087**

**Hisense**

life reimagined