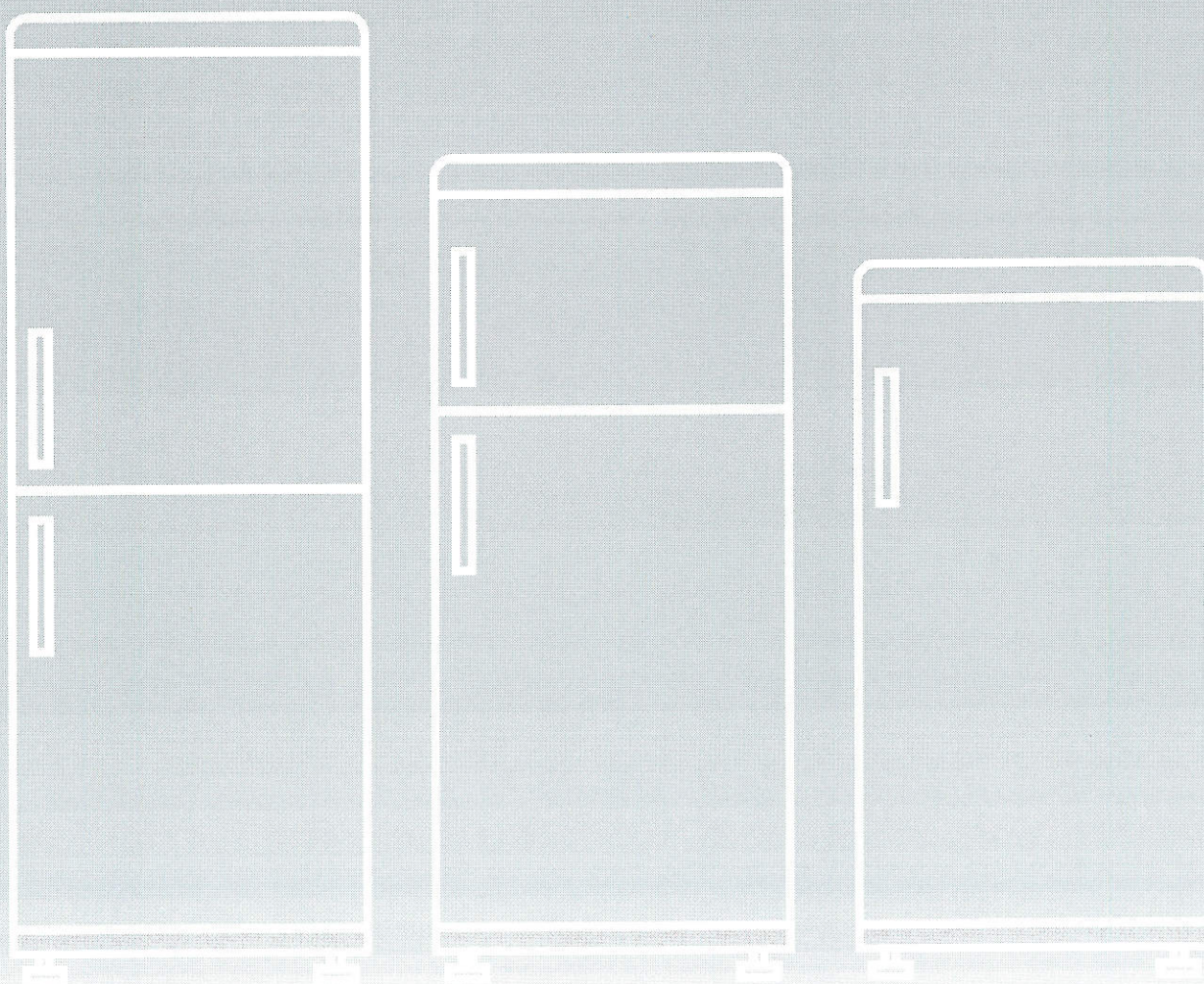


| | |
|--|----|
| GUIDA RAPIDA DI MANUTEZIONE E D'USO | IT |
| MAINTENANCE AND USER'S GUIDE | EN |
| GUÍA RÁPIDA DE USO Y MANTENIMIENTO | ES |
| MANUEL D'ENTRETIEN ET D'UTILISATION | FR |
| SCHNELLANLEITUNG FÜR INSTANDHALTUNG UND GEBRAUCH | DE |
| GUIA RÁPIDO DE MANUTENÇÃO E DE USO | PT |
| HANDLEIDING VOOR ONDERHOUD EN GEBRUIK | NL |
| ΓΡΗΓΟΡΟΣ ΟΔΗΓΟΣ ΣΥΝΤΗΡΗΣΗΣ ΚΑΙ ΧΡΗΣΗΣ | EL |
| KRÓTKA INSTRUKCJA KONSERWACJI I UŻYTKOWANIA | PL |
| RYCHLÝ PRŮVODCE PRO POUŽITÍ A ÚDRŽBU | CZ |



| | |
|---------------------------------|----|
| SAFETY INFORMATION | 10 |
| INSTALLATION | 10 |
| OPERATION | 11 |
| CONSERVATION | 12 |
| FREEZING | 13 |
| DEFROSTING | 14 |
| MAINTENANCE AND CLEANING | 14 |
| ENERGY SAVINGS | 14 |
| AVOIDING NOISES | 15 |
| REVERSIBILITY OF THE DOOR | 15 |
| SUSPENDING USE OF THE APPLIANCE | 15 |
| TROUBLESHOOTING | 16 |

Thank you for purchasing this product.

Before using your refrigerator, please carefully read this instruction manual in order to maximize its performance.

Store all documentation for subsequent use or for other owners.

This product is intended solely for household use or similar applications such as:

- the kitchen area for personnel in shops, offices and other working environments
- on farms, by clientele of hotels, motels and other environments of a residential type
- at bed and breakfasts (B & B)
- for catering services and similar applications not for retail sale.

This appliance must be used only for purposes of storage of food, any other use is considered dangerous and the manufacturer will not be responsible for any omissions.

Also, it is recommended that you take note of the warranty conditions.

SAFETY INFORMATION

The refrigerator contains a refrigerant gas (R600a: isobutane) and insulating gas (cyclopentane), with high compatibility with the environment, that are, however, inflammable.

We recommend that you follow the following regulations so as to avoid situations dangerous to you:

- Before performing any operation, unplug the power cord from the power socket.
- The refrigeration system positioned behind and inside the refrigerator contains refrigerant. Therefore, avoid damaging the tubes.
- If in the refrigeration system a leak is noted, do not touch the wall outlet and do not use open flames. Open the window and let air into the room. Then call a service centre to ask for repair.
- Do not scrape with a knife or sharp object to remove frost or ice that occurs. With these, the refrigerant circuit can be damaged, the spill from which can cause a fire or damage your eyes.
- Do not install the appliance in humid, oily or dusty places, nor expose it to direct sunlight and to water.
- Do not install the appliance near heaters or inflammable materials.
- Do not use extension cords or adapters.
- Do not excessively pull or fold the power cord or touch the plug with wet hands.
- Do not damage the plug and/or the power cord; this could cause electrical shocks or fires.
- It is recommended to keep the plug clean, any excessive dust residues on the plug can be the cause fire.
- Do not use mechanical devices or other equipment to hasten the defrosting process.
- Absolutely avoid the use of open flame or electrical equipment, such as heaters, steam cleaners, candles, oil lamps and the like in order to speed up the defrosting phase.
- Do not use or store inflammable sprays, such as spray paint, near the refrigerator. It could cause an explosion or fire.
- Do not use electrical appliances inside the food storage compartments, unless they are of the type recommended by the manufacturer.
- Do not place or store inflammable and highly volatile materials such as ether, petrol, LPG, propane gas, aerosol spray cans, adhesives, pure alcohol, etc. These materials may cause an explosion.
- Do not store medicine or research materials in the refrigerator.

When the material that requires a strict control of storage temperatures is to be stored, it is possible that it will deteriorate or an uncontrolled reaction may occur that can cause risks.

- Maintain the ventilation openings in the appliance enclosure or in the built-in structure, free of obstruction.
 - Do not place objects and/or containers filled with water on the top of the appliance.
 - Do not perform repairs on this refrigerator. All interventions must be performed solely by qualified personnel.
 - This appliance must not be used by persons (including children) with physical, sensory or mental handicaps, or lacking in experience or knowledge of use, without the supervision of persons who have read the use instructions and that are directly responsible for their safety.
- Make sure children do not play near the appliance to keep them safe.

Scrapping old appliance



By ensuring that this product is properly disposed of, you will help prevent potential negative consequences for the environment and human health, which could otherwise arise due to inappropriate waste handling of this product on reaching the end of its working life.

With proper disposal of the appliance, it is possible to recover valuable raw materials!

This appliance is marked as conforming to the European Directive 2012/19/EU on Waste of Electrical and Electronic Equipment (WEEE).

The symbol on the product indicates that this appliance may not be treated as normal household waste; it must, instead, be delivered over to the nearest collection point for the recycling of electrical and electronic equipment.

Disposal must be effectuated in accordance with the environmental regulations in force for waste disposal.

For more detailed information about treatment, recovery and recycling of this product, contact the competent public office (Department of Ecology and Environment), your home household waste disposal service, or the shop where you purchased the product.

Cut and dispose of the power cord with the plug.

Up until appropriate disposal, do not damage the tubing because they contain the refrigerant gas.

For the disposal of packing materials, follow local regulations.

Conformity



This equipment, in the parts intended to come into contact with food products, is in conformity with the requirements of EC Regulation No. 1935/2004. Apparatus conforms with European Directive 2004/108/EC, 2006/95/EC and successive amendments.

INSTALLATION

WARNINGS:

- Do not install the appliance in a damp or wet location as this could compromise the insulation and result in leakage
- Furthermore, on the exterior of the same, condensate could accumulate
- Do not place the appliance in locations outside or near sources of heat or exposed to direct sunlight.

The appliance operates properly within the range of environmental temperatures indicated:

+10 +32°C for the climatic class SN

+16 +32°C for the climatic class N

+16 +38°C for the climatic class ST

+16 +43°C for the climatic class T

(See the nameplate of the product)

- Do not place containers with liquids on top of the appliance.
- Wait at least 3 hours after final placement before placing the appliance in operation.

1 Make sure that the space around the refrigerator is adequate for ventilation. The illustration (fig. 1) shows the minimum space required for the installation of the refrigerator.

Maintaining a wider space from the wall, results in reduced electrical energy consumption.

The use of the refrigerator in a space the size less than those indicated in the illustration below (fig. 1) could result in improper operation, loud noises and breakdowns.

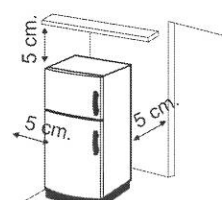


Fig.1

2 If present, install the wall spacer in a central position at the rear of the appliance.(Fig.2)

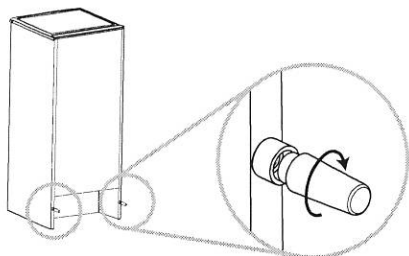


Fig.2

3 Adjust the feet to ensure the stability of the appliance and prevent vibrations and noise (fig. 3). If the front part is higher than the rear, the door can be closed more easily.

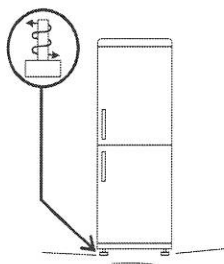


Fig.3

NOTE:

If your refrigerator is in stainless steel or other special finish, it might come with a peel-off coating that protects the surface. To remove this protection, do not use sharp objects that could damage it.

Electrical connection

After shipping, place the appliance vertically and wait at least 2 - 3 hours before connecting it to the electrical system. Before inserting the plug into the electrical socket, make sure that:

- The socket is earthed and in compliance with the law.
- The socket can withstand the maximum power load of the appliance, as indicated on the nameplate of the refrigerator.
- The power supply voltage is within the amounts indicated on the nameplate of the refrigerator.
- The socket is compatible with the plug of the appliance. If not, request replacement of the plug by an authorized technician; do not use extension cords and/or multiple connectors.
- When the appliance is installed, the electrical cord and the current socket must be easily reached.
- The cord must not be folded or compressed.
- The cord must be checked regularly and replaced solely by authorized technicians.
- The manufacturer declines any liability whenever these safety measures are not respected.

Appliance start-up

Remove all wrapping/packaging present inside the appliance and clean with water and baking soda or neutral soap.

After the installation, wait 2 - 3 hours to allow time for the refrigerator/freezer to stabilize at normal working temperature, before placing fresh or frozen foods inside.

If the power cord becomes disconnected, wait at least five minutes before restarting the refrigerator/ freezer. At this point, the appliance is ready for use.

OPERATION

Turning On/Off (no display)

- The thermostat unit for control of the appliance is located inside of the refrigerator compartment (Fig.4).

Rotate the thermostat knob of the thermostat beyond the "0" position. The light is on when the refrigerator door is open. Turning the knob to "0" completely turns off the product.

Turning the knob to "0" completely turns off the product

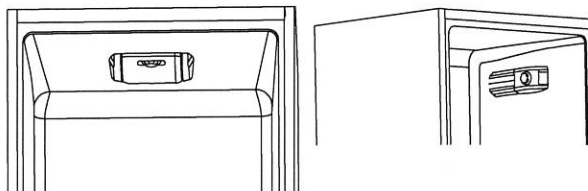


Fig.4

Temperature adjustment (no display)

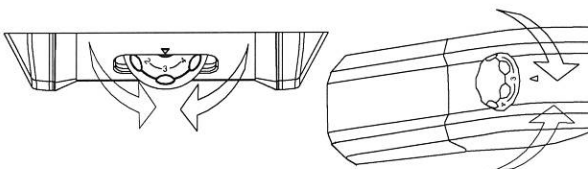


Fig.5

- The temperature adjustment of both compartments is effected by rotating the thermostat knob (fig. 5).

Select the desired position:

- For colder temperature in the refrigerator and in the freezer, by turning towards MAX**.
- For temperature less cold in the refrigerator and in the freezer, by rotating in the direction of 0.

Refrigerator Compartment Fan (if present)

The fan is preset to OFF.

To activate, press the switch (fig. 6)

To optimize energy consumption, it is recommended that you turn the fan on only when the ambient air temperature exceeds 28 to 30°C.

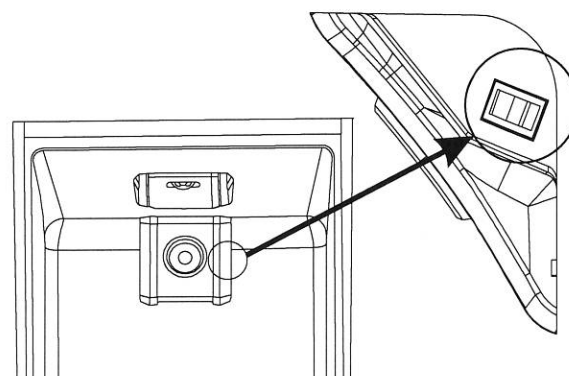


Fig.6

Turning ON / Off (with display)

PRODUCT IN STANDBY: For shutting off the TOTAL NO FROST products, select the freezer function by the MODE button and utilise the arrows 7-8 to visualize the symbol -. For all other products, select the refrigerator function by the MODE button and utilise the arrows 7-8 to visualize the symbol +.

NOTICE:

The product remains powered up until the removal of the power cord.

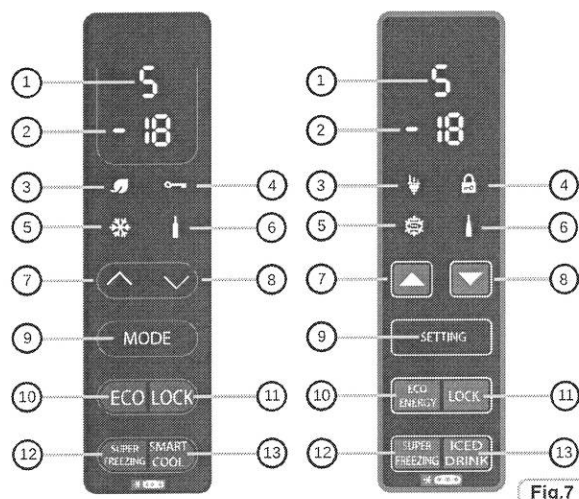


Fig.7

Temperature adjustment (with display)

The preset values are: +5 (range +1 ++7) for the refrigerator, and -18 (range -16 ÷ -22) for the freezer.

After switching off or an extended off periods, the product restarts with the previously set temperature.

• FUNCTION MODE (9)

Pressing the Mode button, it is possible to adjust the temperatures of the refrigerator and freezer.

Refrigerator

Pressing the Mode button once, you adjust the refrigerator temperature. It is possible to set the desired position using the arrows 7, 8.

Position 1: the coldest setting; position 7 least cold setting.

If the appliance is a Total No Frost type, after the reading 1, H (Holiday) will be displayed.

Freezer

Pressing the Mode button 2 times, the desired position for the freezer can be adjusted: -16, less cold, -22, colder; select the desired reading and wait 3 seconds and the temperature will be set.

• FUNCTION ECO (10) / (3)

By activating this function, the appliance optimizes energy efficiency by automatically setting the ideal temperature for ensuring food preservation with lowest energy consumption.

To turn off the Eco function, press the button again.

• LOCK FUNCTION (11) / (4)

Pressing the Lock button, lock of the buttons is activated (any other command will be ignored). To deactivate, press the Lock button again.

• SUPER FREEZING FUNCTION (12) / (5)

To freeze a large amount of food, activating the Super Freezing function is recommended. To activate the function, press the Super Freezing button. This function will be activated for 26 to 34 hours (depending on model). The function automatically deactivates or by again pressing the Super Freezing button.

• SMART COOL/ICED DRINK FUNCTION (13) / (6)

To rapidly cool drinks, put the bottle in the freezer compartment and activate the function by pressing smart cool/iced drink button.

A countdown of 30 minutes starts, after which a 15" acoustic signal indicates that the bottle has reached ideal cooling. The function can be turned off by again pressing the button.

• HOLIDAY FUNCTION (only on TOTAL NO FROST PRODUCTS)

In the case of prolonged absences, it is possible to use the Holiday function.

This function allows you to turn off the refrigerator compartment, but the freezer compartment will remain on. Be sure to remove food from the refrigerator compartment before using this function. To activate see the refrigerator function Mode. To deactivate this function, reset the temperature of the refrigerator.

• REFRIGERATOR DOOR ALARM

If the door remains open for more than a minute, the appliance emits an acoustic signal. Press the MODE button if you want to muffle it.

CONSERVATION

• To maintain the best flavour, nourishment and freshness of foods, it is advisable to store them in the refrigerator compartment as shown in fig. 8 below, making sure to wrap them in aluminium or plastic sheets or in appropriate covered containers to avoid cross-contamination.

Refrigerator zone

Fruit / Vegetables

• To decrease fruit and vegetable moisture losses they must be wrapped in plastic materials such as, for example, films or bags and then inserted in the fruit/vegetable zone. In this way rapid deterioration is avoided.

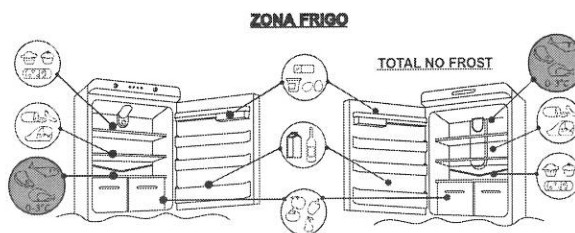


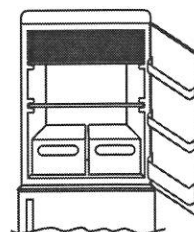
Fig.8

Refrigerated section – Chill

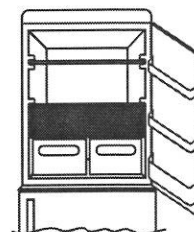
(not all models)

The zone shown below is recommended for meat, fish, poultry, etc.; do not store fruit and vegetables because they can freeze;

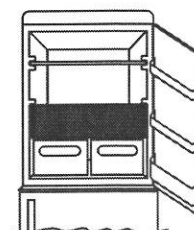
Total No Frost Products



Static Products



Built-in Products



Indicator of the temperature in the coldest zone

(not all models)

Some models are equipped with an indicator of the temperature in the refrigerator compartment in the coldest zone, for you to be able to control the average temperature.

This symbol indicates the coldest zone of the refrigerator. (fig. 9)

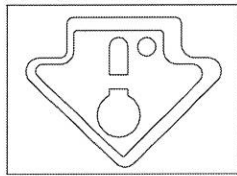


Fig.9

Check that on the indicator of the temperature, the word OK is clearly shown. (fig. 10)

If the word does not appear, this means that the temperature is too high: adjust the temperature to a cooler setting and wait for about 10 hours. Recheck the indicator: if necessary, proceed with a new adjustment.

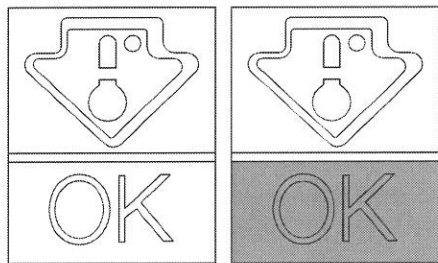


Fig.10

NOTE:

If large quantities of food are inserted or the refrigerator door frequently opened, it is normal for the indicator fails to show OK. Wait at least 10 h before adjusting the knob to a higher setting.

Freezer zone

The storage of frozen food is for about a month in the compartments. *

Use the table below for the compartments. *

Freezing process can only occur in the compartments. *

| | | | |
|-----------------|--|--|--|
| 2 - 3 MESI | | | |
| 4 - 6 MESI | | | |
| 6 - 8 MESI | | | |
| 10 - 12 MESI | | | |

Practical recommendations

Place food on the shelves in a homogeneous manner to allow air to circulate properly and to cool it.

- Avoid contact between the food and the far end walls of the refrigerator compartment.

- Do not introduce hot foods as they can cause deterioration of existing ones and increase energy consumption.

- Remove the wrappings of foods before inserting them.

- Do not put in dishes or other containers unless previously washed.

- Do not obstruct the cold air ventilator openings with food.

- Do not cover the glass shelf of the vegetable bin to allow for proper air circulation.

- Do not store bottles in the freezer compartment as they can burst when frozen.

- In the case of prolonged power outage, keep the doors closed so that foods remain cold as long as possible.

- The installation of the appliance in a hot and humid location, with frequent door openings and storing large amounts of vegetables can cause the formation of condensate and affect the performance of the unit itself.

- To prevent excessive energy consumption, the frequent or prolonged opening of the doors is not recommended.

FREEZING

- Foods must be fresh.

- Freeze small amounts of food at a time in order to freeze quickly. Never exceed the maximum amount indicated on the nameplate.

- During freezing, do not open the freezer door.

- Food must be sealed, airtight.

- Separate food to be frozen by those already frozen.

- Label bags or containers to keep an inventory of frozen foods.

- Once defrosted, do not ever refreeze foods and consume them promptly.

WARNING:

Do not touch the internal parts or frozen food with moist or wet hands as it can cause burns.

NOTE:

•PRODUCTS WITHOUT DISPLAY

Normally it is not necessary to intervene with the thermostat knob. Only in case you find excessive cooling of the products contained in the refrigerator compartment, gently turning the thermostat knob toward 0 is recommended. (fig. 11)

On completion of freezing, return the knob to the usual position.

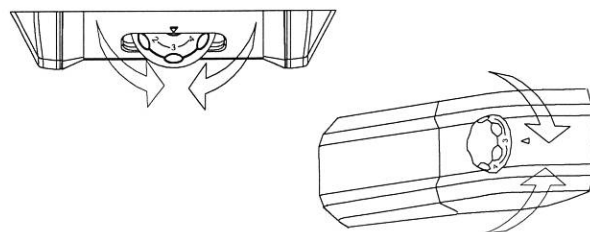


Fig.11

Products with display

See Turn ON / OFF Display

For products with a NO FROST freezer compartment, activate the SUPER FREEZING function 8 hours before introducing the foods. For the other products, activate the SUPER FREEZING function at the time of introduction of the foods.

DEFROSTING

Defrosting the refrigerator compartment

During normal functioning, the refrigerator is automatically defrosted. There is no need to dry the drops of water present on the rear wall or to eliminate the frost (depending on functioning). The water is conveyed to the rear part through the drain hole found there and the heat of the compressor causes it to evaporate.

- Keep the drainage pipe (fig.12) clean in the refrigerator compartment to keep it free of water.

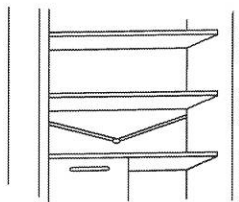


Fig.12

Defrosting the freezer compartment

(static products without NO-FROST technology)

When the layer of frost present in the freezer compartment exceeds 3mm, it is recommended to proceed with the defrosting as it increases energy consumption.

- 1) Rotate the knob to the „0“ position (fig.13)

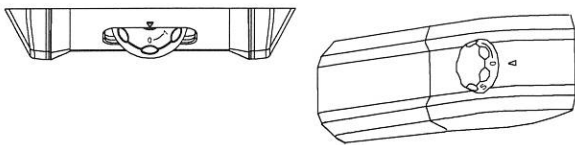


Fig.13

- 2) Disconnect the power cord.
- 3) Remove the frozen food and temporarily place them in a cool place.
- 4) Leave the freezer door open to speed defrosting.
- 5) Collect the water on the bottom of the product.
- 6) Dry the freezer.
- 7) Reconnect the power cord and set the thermostat knob to the desired position.
- 8) Wait a moment and reintroduce the frozen foods.

WARNING:

Absolutely avoid the use of open flames or electrical appliances, such as heaters, steam cleaners, candles, oil lamps and the like to accelerate the defrosting phase.

Do not scrape with a knife or sharp object to remove frost or ice present. These can damage the refrigerant circuit, the leakage of which can cause a fire or damage your eyes.

Defrosting the freezer compartment

(NO-FROST products)

Defrosting is automatic.

MAINTENANCE AND CLEANING

Lighting (according to model)

Bulb Replacement

To replace the lamp bulb, place the thermostat knob on 0 and disconnect the power cord. Remove the protective cover (fig. 14), replace the bulb with a power rating analogous with that indicated on the protective cover.(Fig.14)

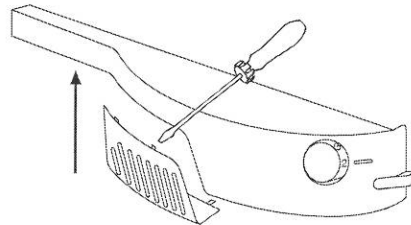


Fig.14

WARNING:

- The light bulb supplied with this appliance is a „special use lamp bulb“ usable only with the appliance supplied. This „special use lamp“ is not usable for domestic lighting.
- Do not touch the light bulb if it has been on for a long period of time because it could be very hot.

LED lighting (Where present)

If the product is equipped with LED lights, please contact the Technical Assistance Service in case of replacement.

Compared to traditional light bulbs, the LEDs last longer and are environmentally friendly.

Cleaning

NOTICE:

- Before each operation, remove the refrigerator plug from the power socket to prevent electric shocks.
- Do not pour water directly on the outside or inside of the refrigerator itself. This could lead to oxidation and damaging of the electrical insulation.

IMPORTANT:

To prevent cracking of the inside surfaces and plastic parts, follow these suggestions:

- Wipe away any food oils adhered to plastic components.
- The internal parts, gaskets and external parts can be cleaned with a cloth with warm water and baking soda or a neutral soap. Do not use solvents, ammonia, bleach or abrasives.
- Remove the accessories, for example, the shelves, from the refrigerator and from the door. Wash in hot soapy water. Rinse and thoroughly dry.
- The back of the appliance tends to accumulate dust which can be eliminated with the use of a vacuum cleaner, after having switched off and disconnected the appliance from the electrical outlet. This provides greater energy efficiency.

ENERGY SAVINGS

For better energy savings, we suggest:

- Installing the appliance away from heat sources and not exposed to direct sunlight and in a well ventilated room.
- Avoid putting hot food into the refrigerator to avoid increasing the internal temperature and therefore causing continuous functioning of the compressor.
- Do not excessively stuff foods so as to ensure proper air circulation.
- Defrost the appliance in case there is ice (see DEFROSTING) to facilitate the transfer of cold.
- In case of absence of electrical energy, it is advisable to keep the refrigerator door closed.
- Open or keep the doors of the appliance open as little as possible
- Avoid adjusting the thermostat to temperatures too cold.
- Remove dust present on the rear of the appliance (see CLEANING).

AVOIDING NOISES

During its operation, the refrigerator emits some absolutely normal noises, such as:

- **HUMMING**, the compressor is running.
- **RUMBLINGS, RUSTLINGS and HISSING**, the refrigerant is flowing through the tubes.
- **TICKS and CLICKS**, the operation shutdown of the compressor.

Small measures to reduce the vibration noises:

- **THE APPLIANCE IS NOT LEVEL**: Adjust the feet to line up the movable.
- **Containers touch each other**: Avoid contact between containers and glass recipients.
- **Appliance in contact**: Install the appliance distanced from other furniture or electrical appliances.
- **Drawers, shelves, bins vibrate**: Check the proper installation of internal accessories.

NOTE:

The refrigerant gas produces noise even when the compressor is off; it is not a defect, it is normal.

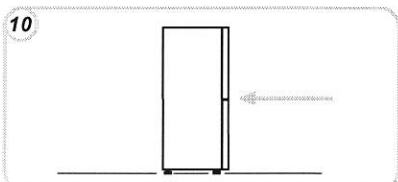
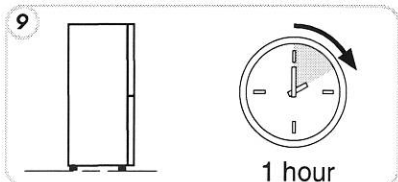
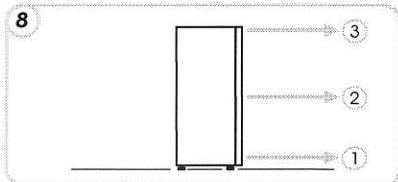
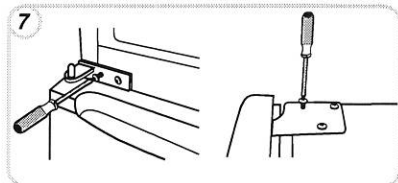
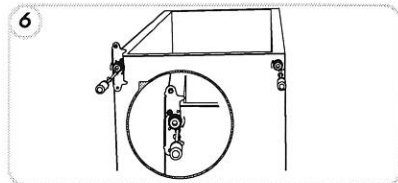
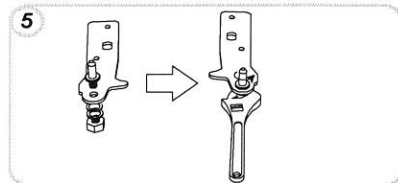
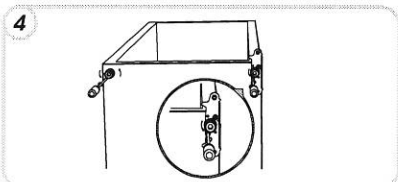
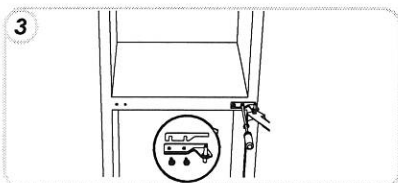
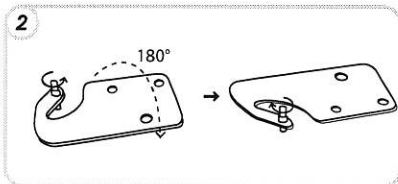
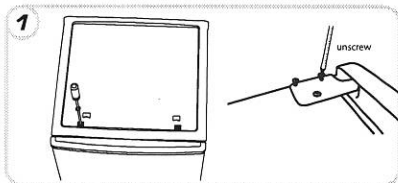
If you hear a clicking sound inside the appliance, it is normal as due to expansion of the various materials.

REVERSIBILITY OF THE DOOR

The doors of the appliance can be reversed so as to allow the opening to the right or left according to exigency.

NOTICE:

- Inversion of the doors must be performed by qualified technical personnel.
- Inversion of the doors is not covered by the warranty.



SUSPENDING USE OF THE APPLIANCE

If the appliance is not to be used for a long time:

- 1) Turn the appliance OFF (see Operation).
- 2) Extract the plug or remove the safety device.
- 3) Clean the appliance
- 4) Leave the doors of the appliance open.

TROUBLESHOOTING

| PROBLEM | CAUSE | REMEDY |
|--|---|--|
| The inside illumination light bulb does not turn on. | <ul style="list-style-type: none"> The light bulb is burned out. Electricity absence. Door switch is blocked. | <ul style="list-style-type: none"> Replace the lamp bulb (see lighting). The power cord is not properly plugged in. Check whether the appliance is switched off. (see Temperature Adjustment). Ensure that there is a current in the house. Check that it is active. |
| The refrigerator and freezer do not sufficiently cool. | <ul style="list-style-type: none"> The doors are not closed. The doors are frequently opened Erroneous setting of the temperature. The refrigerator and freezer have been excessively filled. Surrounding temperature is too low. No electrical power. The rear of the appliance is too close to the wall. | <ul style="list-style-type: none"> Check that the door and gaskets close properly. Avoid unnecessary opening of the doors for a period of time. Check the position of the knob or temperature setting and, if it is possible, cool even more (see Temperature adjustment) Wait for the stabilization of the temperature of the refrigerator or freezer. Check that the ambient temperature is in accordance with what is indicated on the nameplate (see Installation). The power cord is not properly plugged in. Check whether the appliance is switched off (see Temperature adjustment) Ensure that in the home there is current. Move the appliance away from the wall (see Installation). |
| The food in the refrigerator freezes. | <ul style="list-style-type: none"> Erroneous setting of the temperature. Food in contact with the back wall. The freezing of too much fresh food causes a lowering of the temperature of the refrigerator | <ul style="list-style-type: none"> Check the position of the knob or temperature setting (see Temperature Adjustment) and, if possible, decrease temperature setting. Separate the food from the back wall of the refrigerator. Do not exceed the maximum amount to be frozen (see Freezing). |
| The bottom of the refrigerator compartment is wet or droplets are present. <small>Presence of drops or water on the back wall</small> | <ul style="list-style-type: none"> Products that are not NoFrost: the drain tube could be clogged. Normal operation of the refrigerator | <ul style="list-style-type: none"> Clean the drain tube with a stick or the like to allow the discharge of water. This is not a defect (see Defrosting) |
| The motor runs continuously. | <ul style="list-style-type: none"> The doors are not closed. The doors are opened frequently. Ambient temperature is very high. Thickness of frost than 3mm. | <ul style="list-style-type: none"> Make sure the doors are closed and if the seals close properly. Avoid unnecessary open ports for a certain period. Verify that the ambient temperature is in accordance with the specifications on the nameplate (see Installation). Set the thermostat knob on low numbers / Set the display a warmer temperature. Defrost the unit (see Defrosting). |
| The temperature of some external parts is high. | <ul style="list-style-type: none"> Presence of the condensate drain pipe. | <ul style="list-style-type: none"> It is normal: temperatures are high to prevent the formation of condensation on certain parts. |
| The frozen food is thawing. | <ul style="list-style-type: none"> The ambient temperature range below climate class of the product. The compressor starts rarely The freezer door is not closed. | <ul style="list-style-type: none"> Move the unit to a warmer or heat the room. Make sure the door is closed and that the gasket is sealing properly. |
| Condensation on the outside. | <ul style="list-style-type: none"> Environment too moist. | <ul style="list-style-type: none"> Move the unit in a less humid. |

IF YOU ARE NOT SOLVED THE PROBLEM, CONTACT THE SERVICE CENTER, PLEASE GIVE THE TYPE OF FAULT AND THE INFORMATION ON THE PLATE OF THIS APPARATUS TO INSIDE THE REFRIGERATOR COMPARTMENT:

- The model of equipment.
- The number of series.