



Installation & Operating Manual



IQ30-NF185X
No Frost Fridge Freezer - Inox



Please read these instructions carefully before attempting to install or use this appliance.
It is advisable to keep these instructions in a safe place for future reference.

CONTENTS

Introduction	3
Safety	4
Care & Cleaning	6
Installation	9
The Appliance	13
Operating the Appliance	14
Accessories	17
Hints/ Tips	17
Troubleshooting	19
Maintenance	20
Special for New European Standard	21
Guarantee	22
WEEE Information	23

INTRODUCTION

Thank you for choosing this ICEKING appliance.

Your appliance has been designed to give years of trouble- free use provided it is installed, maintained and used according to the manufacturers instructions.

Please read these instructions carefully before installing or using your appliance for the first time and keep them in a safe place for future reference. It is also advisable to keep your purchase and installation receipts with these instructions in a safe place for future reference (These will be required if you make any claim within the guarantee period).

Included is some important safety information in addition to guidelines and recommendations that will enable you to take full advantage of all the functions available.

This quality appliance has been tested and certified to meet all applicable UK electrical and safety standards.

This appliance must be installed and connected in accordance with current regulations by a qualified electrician or suitably qualified technician.

After unpacking the appliance ensure that there is no visible damage. If the appliance has been damaged during transit, **do not use it**, contact your retailer immediately.

Before using the appliance make sure that it is left to stand for 4 hours before first use.

How to register your guarantee and in the unfortunate case of failure contact for service please see the rear of this manual for details.

We continuously try to improve our products for the benefit of our customers. For this reason we reserve the right to make changes to any product at any time, without notice.

SAFETY

SAFETY INFORMATION

In the interest of your safety and to ensure the correct use, before installing and first using the appliance, read this user manual carefully, including its hints and warnings. To avoid unnecessary mistakes and accidents, it is important to ensure that all people using the appliance are thoroughly familiar with its operation and safety features. Save these instructions and make sure that they remain with the appliance if it is moved or sold, so that everyone using it through its life will be properly informed on appliance use and safety.

For the safety of life and property keep the precautions of these user's instructions as the manufacturer is not responsible for damages caused by omission.

CHILDREN AND VULNERABLE PEOPLE SAFETY

- This appliance can be used by children aged from 8 years and above and persons with reduced physical, sensory or mental capabilities or lack of experience and knowledge if they have been given supervision or instruction concerning use of the appliance in a safe way and understand the hazards involved.
- Children aged from 3 to 8 years are allowed to load and unload this appliance.
- Children should be supervised to ensure that they do not play with the appliance.
- Cleaning and user maintenance shall not be made by children unless they are aged from 8 years and above and supervised.
- Keep all packaging well away from children. There is risk of suffocation.
- If you are discarding the appliance pull the plug out of the socket, cut the connection cable (as close to the appliance as you can) and remove the door to prevent playing children to suffer electric shock or to close themselves into it.
- If this appliance featuring magnetic door seals is to replace an older appliance having a spring lock (latch) on the door or lid, be sure to make that spring lock unusable before you discard the old

appliance. This will prevent it from becoming a death trap for a child.

GENERAL SAFETY

⚠ WARNING: Keep ventilation openings, in the appliance enclosure or in the built-in structure, clear of obstruction.

⚠ WARNING: Do not use mechanical devices or other means to accelerate the defrosting process, other than those recommended by the manufacturer.

⚠ WARNING: Do not damage the refrigerant circuit.

⚠ WARNING: Do not use other electrical appliances (such as ice cream makers) inside of refrigerating appliances, unless they are approved for this purpose by the manufacture.

⚠ WARNING: Do not touch the light bulb if it has been on for a long period of time because it could be very hot. ⁽¹⁾

⚠ WARNING: When positioning the appliance, ensure the supply cord is not trapped or damaged.

⚠ WARNING: Do not locate multiple portable socket-outlets or portable power suppliers at the rear of the appliance.

- Do not store explosive substances such as aerosol cans with a flammable propellant in this appliance.
- The refrigerant isobutane (R-600a) is contained within the refrigerant circuit of the appliance, a natural gas with a high level of environmental compatibility, which is nevertheless flammable.
- During transportation and installation of the appliance, be certain that none of the components of the refrigerant circuit become damaged.
 - avoid open flames and sources of ignition
 - thoroughly ventilate the room in which the appliance is situated
- It is dangerous to alter the specifications or modify this product in any way. Any damage to the cord may cause a short circuit, fire and/or electric shock.

SAFETY

- This appliance is intended to be used in household applications only.

⚠ WARNING: Any electrical components (plug, power cord, compressor and etc). must be replaced by a certified service agent or qualified service personnel.

⚠ WARNING: The light bulb supplied with this appliance is a "special use lamp bulb" usable only with the appliance supplied. This "special use lamp" is not usable for domestic lighting. ⁽¹⁾

⁽¹⁾ If there is a light in the compartment.

- Power cord must not be lengthened.
- Make sure that the power plug is not squashed or damaged by the back of the appliance. A squashed or damaged power plug may overheat and cause a fire.
- Make sure that you can gain the mains plug of the appliance.
- Do not pull the mains cable.
- If the power plug socket is loose, do not insert the power plug. There is a risk of electric shock or fire.
- You must not operate the appliance without the lamp.
- This appliance is heavy. Care should be taken when moving it.
- Do not remove nor touch items from the freezer compartment if you hands are damp/wet, as this could cause skin abrasions or frost/freezer burns.
- Avoid prolonged exposure of the appliance to direct sunlight.

DAILY USE

- Do not put hot on the plastic parts in the appliance.
- Do not place food products directly against the rear wall.
- Frozen food must not be re-frozen once it has been thawed out. ⁽¹⁾
- Store pre-packed frozen food in accordance with the frozen food manufacturers instructions. ⁽¹⁾

- Appliances manufactures storage recommendations should be strictly adhered to. Refer to relevant instructions.
- Do not place carbonated or fizzy drinks in the freezer compartment as it creates pressure on the container, which may cause it to explode, resulting in damage to the appliance. ⁽¹⁾
- Ice lollies can cause frost burns if consumed straight from the freezer. ⁽¹⁾

To avoid contamination of food, please respect the following instructions:

- Opening the door for long periods can cause a significant increase of the temperature in the compartments of the appliance.
- Clean regularly surfaces that can come in contact with food and accessible drainage systems.
- Store raw meat and fish in suitable containers in the refrigerator, so that it is not in contact with or drip onto other food.
- Two-star frozen-food compartments (if they are presented in the appliance) are suitable for storing pre-frozen food, storing or making ice-cream and making ice cubes.
- One-, two- and three-star compartments (if they are presented in the appliance) are not suitable for the freezing of fresh food.
- If the appliance is left empty for long periods, switch off, defrost, clean, dry and leave the door open to prevent mould developing within the appliance.

⁽¹⁾ If there is a freezer compartment.

⁽²⁾ If there is a fresh-food storage compartment.

CARE & CLEANING

- Before maintenance, switch off the appliance and disconnect the mains plug from the mains socket.
- Do not clean the appliance with metal objects.
- Do not use sharp objects to remove frost from the appliance. Use a plastic scraper. ⁽¹⁾
- Regularly examine the drain in the refrigerator for defrosted water. If necessary, clean the drain. If the drain is blocked, water will collect in the bottom of the appliance. ⁽²⁾

INSTALLATION

⚠ IMPORTANT: For electrical connection carefully follow the instructions given in specific paragraphs.

- Unpack the appliance and check if there are damages on it. Do not connect the appliance if it is damaged. Report possible damages immediately to the place you bought it. In that case retain packing.
- The appliance should be left to stand at least four hours before connecting the appliance to allow the oil to flow back in the compressor.
- Adequate air circulation should be around the appliance, lacking this leads to overheating. To achieve sufficient ventilation, follow the instructions relevant to installation.
- Wherever possible the spacers of the product should be against a wall to avoid touching or catching warm parts (compressor, condenser) to prevent possible burn.
- The appliance must not be located close to radiators or cookers.
- Make sure that the mains plug is accessible after the installation of the appliance.
- This refrigerating appliance is not intended to be used as a built-in appliance.

SERVICE

- Any electrical work required to do the servicing of the appliance should be carried out by a qualified electrician or competent person.
- This product must be serviced by an authorized Service Centre, and only genuine spare parts must be used.

ENERGY SAVING


- Don't put hot food in the appliance.
- Don't pack food close together as this prevents air circulating.
- Make sure food doesn't touch the back of the compartment(s).
- If electricity goes off, don't open the door(s).
- Don't open the door(s) frequently.
- Don't keep the door(s) open for too long time.
- Don't set the thermostat on exceeding cold temperatures.
- All accessories, such as drawers, shelves and balconies, should be kept there for lower energy consumption.

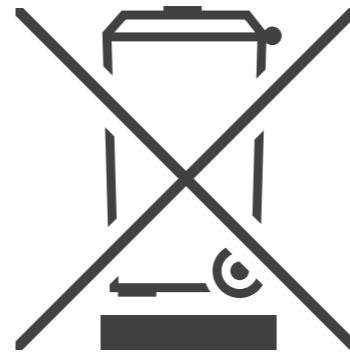
⁽¹⁾ If there is a freezer compartment.

⁽²⁾ If there is a fresh-food storage compartment.

CARE & CLEANING

ENVIRONMENTAL PROTECTION

This appliance does not contain gases which could damage the ozone layer, in either its refrigerant circuit or insulation materials. The appliance shall not be discarded together with the urban refuse and rubbish. The insulation foam contains flammable gases: the appliance shall be disposed according to the appliance regulations to obtain from your local authorities. Avoid damaging the cooling unit, especially the heat exchanger. The materials used on this appliance marked by the symbol  are recyclable.



The symbol on the product or on its packaging indicates that this product may not be treated as household waste. Instead it should be taken to the appropriate collection point for the recycling of electrical and electronic equipment.

By ensuring this product is disposed of correctly, you will help prevent potential negative consequences for the environment and human health, which could otherwise be caused by inappropriate waste handling of this product. For more detailed information about recycling of this product, please contact your local council, your household waste disposal service or the shop where you purchased the product.

Packaging Materials

The materials with the symbol are recyclable. Dispose the packaging in a suitable collection container to recycle it.

Disposal of the Appliance

1. Disconnect the mains plug from the mains socket.
2. Cut off the mains cable and discard it.

⚠ WARNING: During using, service and disposal the appliance, please pay attention to symbol as left side, which is located on rear of appliance (rear panel or compressor). It's risk of fire warning symbol. There are flammable materials in refrigerant pipes and compressor. Please be far away fire source during using, service and disposal.

SAFETY ADVICE

- Please read this booklet thoroughly before installing and switching on the appliance. The manufacturer accepts no responsibility for incorrect installation and usage.
- If this appliance is to replace an old refrigerator, as a safety measure remove the door/doors before disposal.
- Your old appliances contain insulation gases and refrigerant that must be disposed of correctly. Please ensure that the refrigerant circuit is not damaged before the appliance is taken away for correct disposal in line with current legislation. If there is any doubt contact your Local Authority for instructions.
- This appliance may contain the refrigerant isobutene (R600a). This is a natural gas with a high level of environmental compatibility; however, caution is required as isobutene is a flammable gas. It is essential to ensure that refrigerant tubes are not damaged during transportation and the installation of the appliance. In the event that the refrigerant circuit is damaged, avoid naked flames or sources of ignition and ventilate the room in which the appliance is situated.
- Do not damage the refrigerant circuit.
- This appliance shall not be used by children aged from 8 years and above and persons with reduced physical, sensory or mental capabilities, or lack of experience and knowledge, unless they have been given supervision or instruction on how to use of the appliance in a safe way and understand the hazards involved. Children shall not play with the appliance. Cleaning and user maintenance shall not be made by children without supervision.

CARE & CLEANING

- Do not use extension leads or adaptors.
- Do not twist or bend the cables, and keep them away from hot surfaces.
- Do not plug in or unplug this appliance with wet hands.
- Following installation make sure that the power cable is not trapped underneath the appliance.
- If the power supply cord is damaged, it must be replaced by the manufacturer, its service agent or similarly qualified persons in order to avoid a hazard.

INSTALLATION

⚠ IMPORTANT! This appliance must be left to stand in an upright position for at least 4 hours before being switched on for the first time.

- This appliance has been designed for Domestic Use Only. Remove all packaging and securing tape from the appliance.
- Wash the interior of the appliance with luke warm water containing a small amount of bicarbonate soda (5ml to 0.5 litres of water).
- It is not recommended to site this appliance in a cold atmosphere, i.e. garage, cellar or shed where the temperature may fall below 10°C. Doing so may invalidate your guarantee and cause the appliance not to run or the freezer unit to under freeze and lead to condensation issues - see below.
- N.B. If you site this appliance in a garage/ out-building or any other cold environment, condensation may occur depending on the ambient temperature. This may form on the outer cabinet and "pool" under the appliance. This is quite normal and does not indicate that there is a fault with the appliance. However, condensation droplets may also enter the appliance and damage the insulation.
- N.B. Condensation or related problems such as rust are not covered under the manufacturers guarantee.
- N.B. If you site this appliance in a very warm room/environment, i.e. conservatory, the motor may run continuously and the required temperature may not be achieved inside the cabinet.
- Position the appliance in a dry atmosphere and out of direct sunlight.
- Do not position next to a cooker or other sources of heat, i.e. radiator. Leave a minimum gap of 2cm between the appliances in order to avoid condensation. • Please ensure that there is a 50mm 'air-gap' between the appliance and the rear and side walls.
- Do not place or store heavy items on the top of this appliance.
- Ensure that the appliance is level, upright and

wheels/feet are firmly positioned on a flat floor.

- Connect the plug to an adjacent 13amp socket outlet and ensure that the appliance is not standing on the supply cable.
- Install this appliance at a location where the ambient temperature corresponds to the climate class indicated on the rating plate which can be found inside your appliance or on the rear of your appliance:

Extended Temperate (SN): "this refrigerating appliance is intended to be used at ambient temperature ranging from 10 °C to 32 °C;

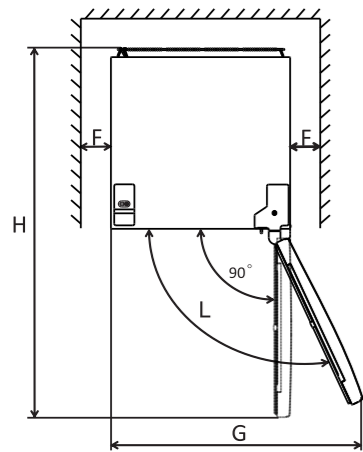
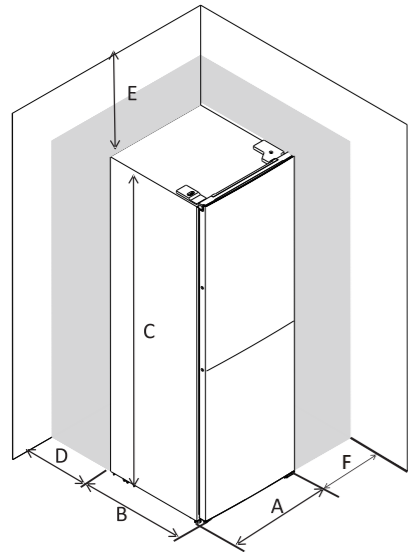
Temperate (N): this refrigerating appliance is intended to be used at ambient temperatures ranging from 16 °C to 32 °C;

Subtropical (ST): this refrigerating appliance is intended to be used at ambient temperatures ranging from 16 °C to 38 °C;

Tropical (T): this refrigerating appliance is intended to be used at ambient temperatures ranging from 16 °C to 43 °C.

INSTALLATION

SPACE REQUIREMENT

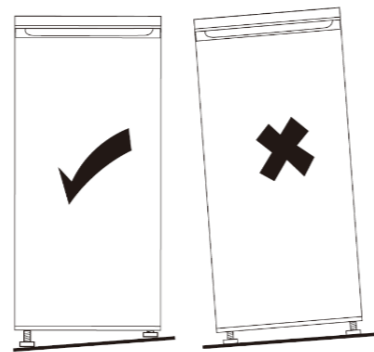
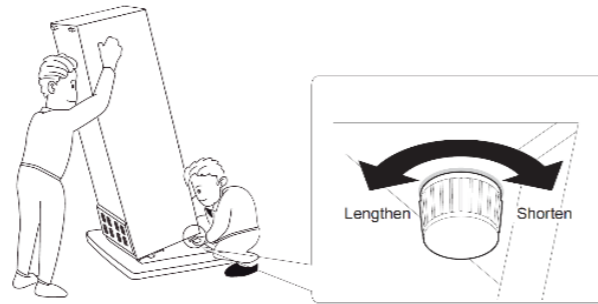


FN2-520	
A	600
B	680
C	1865
D	min=50
E	min=50
F	min=50
G	1008
H	1236
L	135°

LEVELLING THE UNIT

To do this, adjust the two levelling feet in the front of the unit.

If the unit is not level, the door and magnetic seal alignments will not be covered properly.



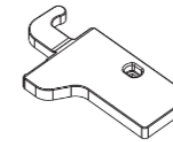
INSTALLATION

DOOR REVERSAL

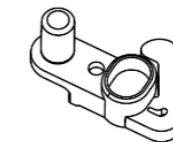
Before reversing the door, please prepare below tools and material:

Straight screwdriver, cross screwdriver, spanner and the components included in the accessory bag.

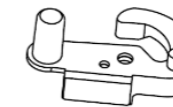
Left Door Hinge Cover x1



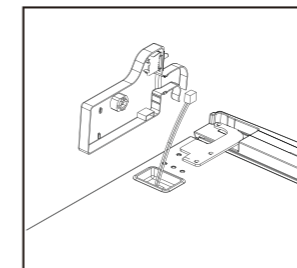
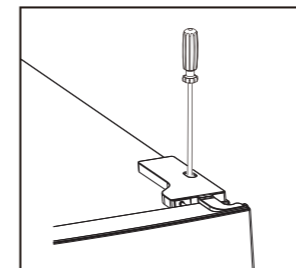
Left Aid-Closer on Upper Door x1



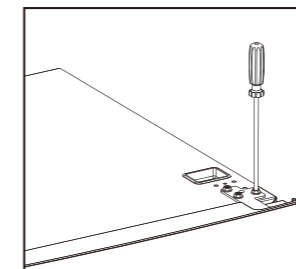
Left Aid-Closer on Upper Door x1



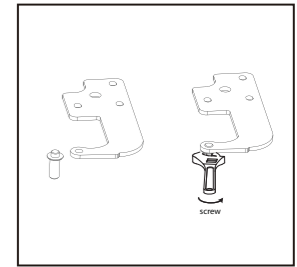
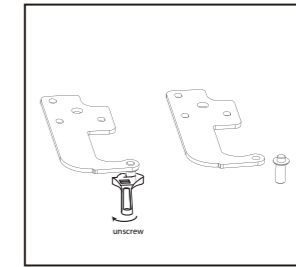
1. Unscrew the top hinge cover and disconnect connectors of door switch.



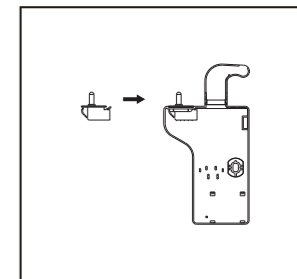
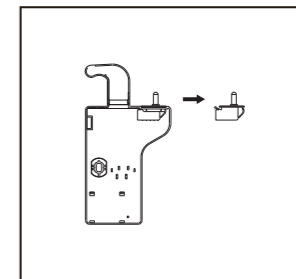
2. Unscrew top hinge.



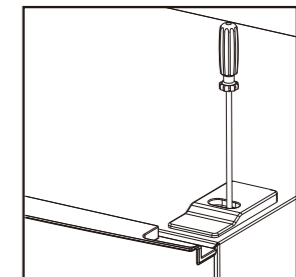
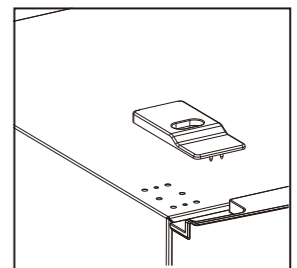
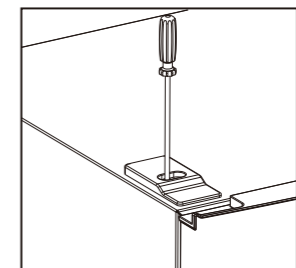
3. Remove the pin with a screwdriver and flip the hinge bracket. Then refit the pin to hinge bracket.



4. Move door switch from the right hinge cover to the left hinge cover in accessory bag.

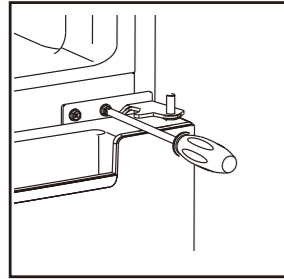


5. Move the top left cover to the right side.

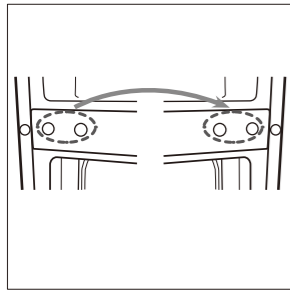


INSTALLATION

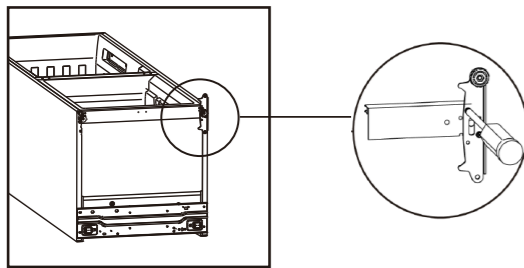
6. Take off the upper door, take out the screw from the middle hinge by cross screwdriver, then take off the lower door.



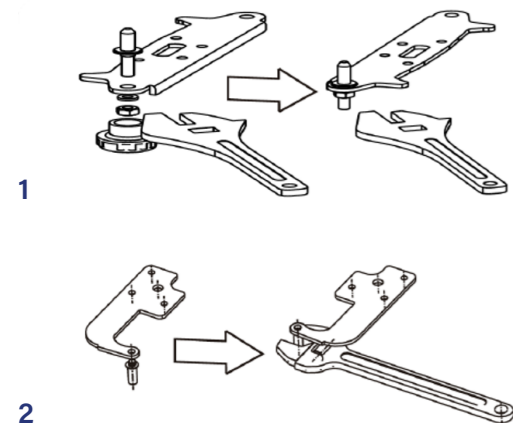
7. Move the hinge hole covers from the left side to the right side.



8. Unscrew bottom hinge. Then remove the adjustable feet from both sides.



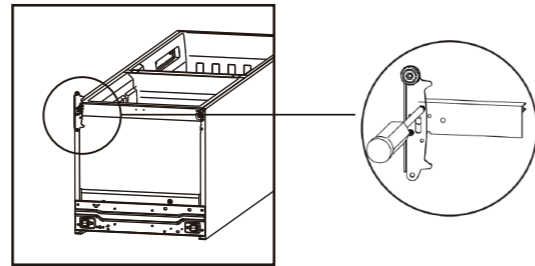
9. Unscrew and remove the bottom hinge pin, turn the bracket over and replace it.



1

2

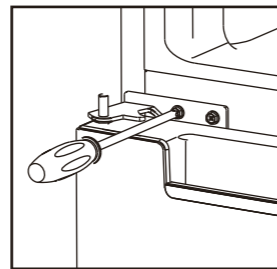
10. Refit the bracket fitting to the bottom hinge pin. Replace both adjustable feet.



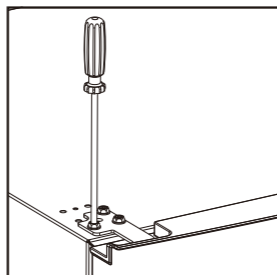
11. Remove aid-closers from bottom of upper and lower doors, then take new aid-closers from accessory bag and install them to the left side.



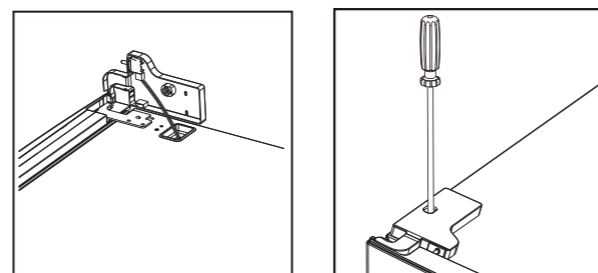
12. Install the lower door, adjust and fix the middle hinge onto the cabinet.



13. Replace the upper door, please ensure the door aligns with the cabinet to make sure the door gasket seals with the cabinet tightly.

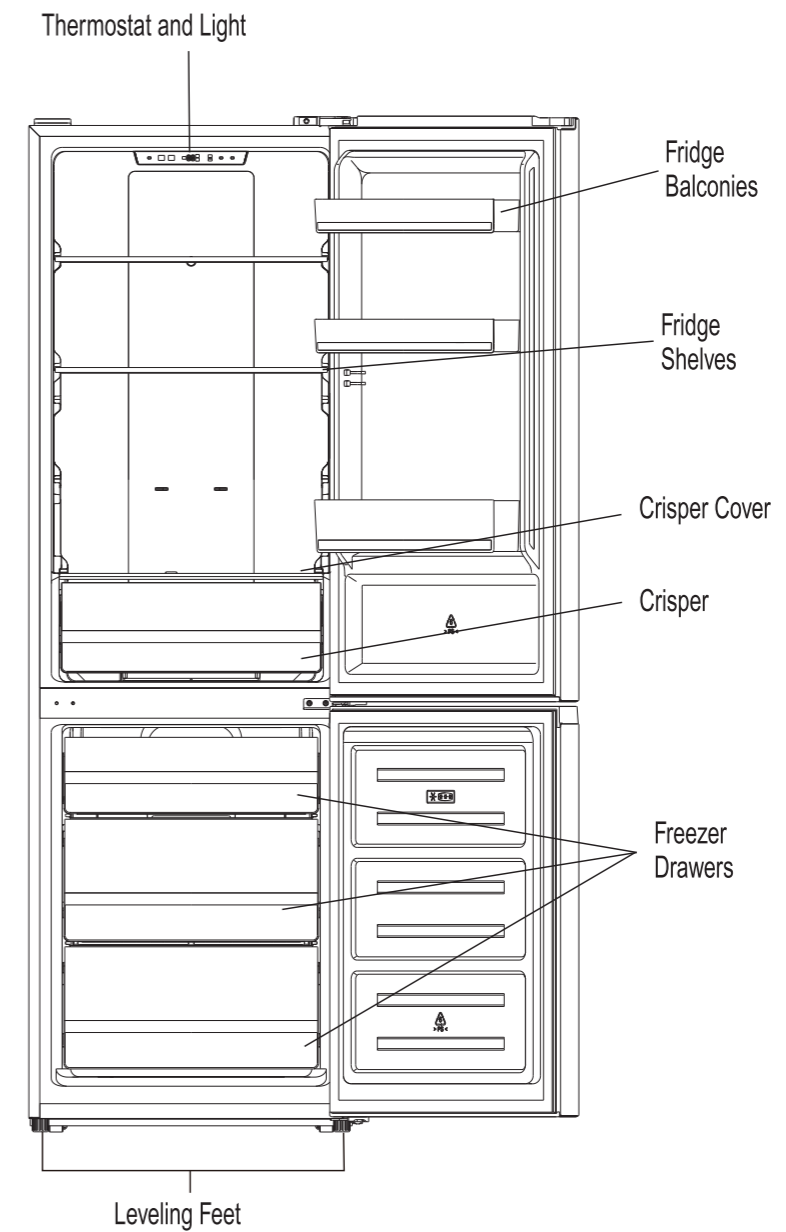


13. Replace the top hinge cover. Before, screw the cover, connect terminals of the door switch.



THE APPLIANCE

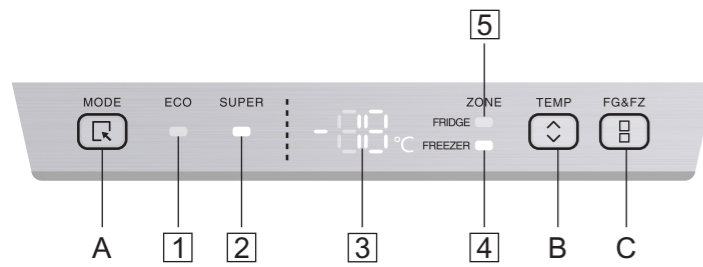
THE APPLIANCE



NOTE: This installation is only for hinting. For details, please check your appliance.

OPERATING THE APPLIANCE

1. CONTROL PANEL



1.1 Operation Button (A & B & C)

- Mode select button
Press this button to select running mode (ECO mode or SUPER mode or user defined mode).
- Temperature select button
Press this button to select setting temperature of fridge compartment and freezer compartment.
- Compartment select button
Press this button consecutively, fridge compartment indicator and freezer compartment indicator will be lit up in a circle. When FRIDGE indicator is on, fridge compartment is selected. When FREEZER indicator is on, freezer compartment is selected.

1.2 Indicators (1 & 2 & 4 & 5)

1. ECO mode indicator. This light is on when ECO mode is selected.
2. SUPER mode indicator. This light is on when SUPER mode is selected.
4. Fridge compartment indicator This indicator is on, current display is the setting temperature of fridge compartment, and temperature setting operation is only for fridge compartment.
5. Freezer compartment indicator This indicator is on, current display is the setting temperature of freezer compartment, and temperature setting operation is only for freezer compartment.

1.3 Display (3)

3. Setting temperature display of fridge compartment or freezer compartment. This area will display setting temperature of fridge compartment or freezer compartment according to the selected compartment. If E0, E1, E2, E3, E5 displays in this area, please call service.

2. ILLUSTRATION OF THE KEY

2.1 Operation and Display.

- Control panel will be 100% lit up for 3s, which operates exactly as per the setting before the power off.
- There will be a prompt beep for any key operation.

2.2 Temperature Setting of Fridge Compartment

1. In user defined mode or SUPER mode, press compartment select button to lit up fridge compartment indicator.
2. Press temperature select button consecutively, setting temperature of fridge compartment will display "2°C, 3°C, 4°C, 5°C, 6°C, 7°C, 8°C, OF".
3. Setting temperature will be confirmed after 5s of flashing of display.

NOTE: If setting temperature of fridge compartment displays OF, it means fridge compartment is set to OFF.

2.3 Temperature Setting of Freezer Compartment

1. In user defined mode or SUPER mod, press compartment select button to lit up freezer compartment indicator.
2. Press temperature select button consecutively, setting temperature of fridge compartment will display "2C, 3C, 4C, 5C, 6c, 7C, 8C, OF".
3. Setting temperature will be confirmed after 5 secs of flashing of display.

2.4 Temperature Setting Recommendation

Temperature setting recommendation		
Environment Temperature	Fridge Compartment	Freezer Compartment
Summer		
Normal		
Winter		

OPERATING THE APPLIANCE

2.5 Eco Mode

Activate Eco Mode

- Press mode select button consecutively until ECO mode indicator is lit up, ECO mode is selected.
- After 5 secs of flashing of ECO mode indicator, ECO mode will be activated.
- When ECO mode is activated, fridge and freezer temperature will be set automatically to 5°C/-18°C.
- In ECO mode, if you set fridge or freezer temperature by manual, ECO mode indicator will flash for 3s, fridge and freezer temperature setting operations are not workable.

Quit Eco Mode

- Press mode select button , when ECO mode indicator is light off, the appliance quits from ECO mode.

2.6 Super Mode

Activate Super Mode

- Press mode select button consecutively until SUPER mode indicator is lit up, SUPER mode is selected.
- After 5 secs of flashing of SUPER mode indicator, SUPER mode will be activated.
- When SUPER mode is activated, freezer temperature will be set automatically to -25°C, fridge temperature setting operation is available.
- In SUPER mode, if you set freezer temperature by manual, SUPER mode indicator will flash for 3s, freezer temperature setting operations are not workable.

Quit Super Mode

- Press mode select button , when SUPER mode indicator is light off, the appliance quits from SUPER mode.

WARNING: In SUPER mode, the appliance will keep running under heavy load, noise level will be slightly higher than normal condition.

2.7 User Defined Mode

- Press mode select button consecutively until ECO mode indicator/ SUPER mode indicator are both light off, user defined mode is activated.
- In user defined mode, users can set fridge temperature and freezer temperature by manual.

2.8 Door Opening Alarm Function

If fridge door keeps open for 60s, door opening alarm will arise.

OPERATING THE APPLIANCE

DAILY USE

Position different food in different compartments according to the below table.

Refrigeration Compartment	Type of Food
Door or balconies of fridge compartment	Foods with natural preservations, such as jams, juices, drinks, condiments Do not store perishable foods
Crisper drawer (salad drawer)	Fruits, herbs and vegetables should be placed separately in the crisper bin Do not store bananas, onions, potatoes, garlic in the refrigerator
Fridge shelf - middle	Dairy products, eggs
Fridge shelf - top	Foods hat do not need cooking, such as read-to-eat foods, deli meats, leftovers
Freezer drawer(s)/shelf	Foods for long-term storage Bottom drawer/shelf for raw meat, poultry, fish Middle drawer/shelf for frozen vegetables, chips Top drawer/shelf for ice cream, frozen fruit, frozen baked goods

THAWING

Deep-frozen or frozen food, prior to be used, can be thawed in the fridge compartment or at room temperature, depending on the time available for this operation.

Small pieces may even be cooked still frozen, directly from the freezer. In this case, cooking will take longer.

ICE CUBES

This appliance may be equipped with one or more ice cube trays to produce ice.

ACCESSORIES & HINTS/TIPS

MOVABLE SHELVES

The walls of the refrigerator are equipped with a series of Runners so that the shelves can be positioned as desired.

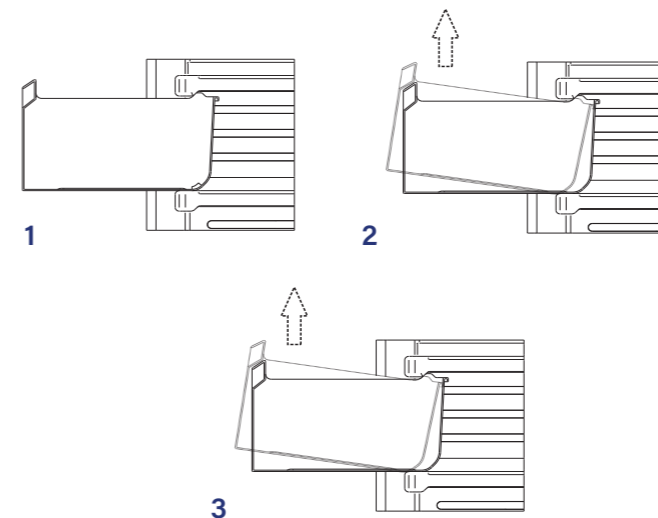
POSITIONING THE DOOR BALCONIES

To permit storage of food packages of various sizes, the door balconies can be placed at different heights. To make these adjustments proceed as follows: gradually pull the balcony in the direction of the arrow until it comes free, then reposition as required.



DISASSEMBLE THE BOTTOM DRAWER

1. Pull out the bottom drawer to stopper position.
2. Lift up the front of drawer.
3. Pull out the bottom drawer.



HELPFUL HINTS AND TIPS HINTS FOR FREEZING

To help you make the most of the freezing process, here are some important hints.

- The maximum quantity of food which can be frozen in 24 hrs. is shown on the rating plate
- The freezing process takes 24 hours. No further food to be frozen should be added during this period
- Only freeze top quality, fresh and thoroughly cleaned, foodstuffs
- Prepare food in small portions to enable it to be rapidly and completely frozen and to make it possible subsequently to thaw only the quantity required
- Wrap up the food in aluminum foil or polythene and make sure that the packages are airtight
- Do not allow fresh, unfrozen food to touch food which is already frozen, thus avoiding a rise in temperature of the latter
- Lean foods store better and longer than fatty ones; salt reduces the storage life of food
- Water ices, if consumed immediately after removal from the freezer compartment, can possibly cause the skin to be freeze burnt,
- It is advisable to show the freezing in date on each individual pack to enable you to keep tab of the storage time

HINTS FOR STORAGE OF FROZEN FOOD

To obtain the best performance from this appliance, you should:

- Make sure that the commercially frozen foodstuffs were adequately stored by the retailer
- Be sure that frozen foodstuffs are transferred from the food store to the freezer in the shortest possible time
- Do not open the door frequently or leave it open longer than absolutely necessary
- Once defrosted, food deteriorates rapidly and cannot be re-frozen

HINTS/TIPS

- Do not exceed the storage period indicated by the food manufacture

HINTS FOR FRESH FOOD REFRIGERATION

To obtain the best performance:

- Do not store warm food or evaporating liquids in the refrigerator
- Do cover or wrap the food, particularly if it has a strong flavour

HINTS FOR REFRIGERATION

- Meat (all types): wrap in polythene bags and place on the glass shelves above the vegetable drawer
- For safety, store in this way only one or two days at the most
- Cooked foods, cold, dishes, etc.: these should be covered and may be placed on any shelf
- Fruit and vegetables: these should be thoroughly cleaned and placed in the special drawer(s) provided
- Butter and cheese: these should be placed in special airtight containers or wrapped in aluminum foil or polythene bags to exclude as much air as possible
- Milk bottle: these should have a cap and should be stored in the balconies on the door
- Bananas, potatoes, onions and garlic, if not packed, must not be kept in the fridge

TROUBLESHOOTING

⚠ CAUTION: Before shooting any trouble, disconnect the power supply. Only a qualified electrician of competent person must do the trouble shooting that is not in this manual. Important! There are some sounds during normal use (compressor, refrigerant circulation).

If the malfunction shows again, contact the Service Centre. This data is necessary to help you quickly and correctly. Write the necessary data here, refer to the rating plate.

.....

.....

Problem	Possible Cause	Solution
Appliance does not work	Mains plug not plugged in or is loose	Insert mains plug
	Fuse has blown or is defective	Check fuse, replace if necessary
	Socket is defective	Mains malfunctions are to be corrected by an electrician
Appliance freezes too much	Temperature is set too cold or the appliance runs at SUPER setting	Turn the temperature regulator to a warmer setting temporarily
The food is not frozen enough	Temperature is not properly adjusted	Please look in the initial Temperature Setting section
	Door was open for an extended period	Open the door only as long as necessary
	A large quantity of warm food was placed in the appliance within the last 24 hours	Turn the temperature regulator to a colder setting temporarily
	The appliance is near a heat source	Please look in the installation location section
Heavy build-up of frost on the door seal	Door seal is not air-tight	Carefully warm the leaking sections of the door seal with a hair dryer (on a cold setting). At the same time shape the warmed door seal by hand such that it sits correctly
Unusual noises	Appliance is not level	Re-adjust the feet
	The appliance is touching the wall or other objects	Move the appliance slightly
	A component, e.g. a pipe, on the rear of the appliance is touching another part of the appliance or the wall	If necessary, carefully bend the component out of the way
Side panels are hot	It's normal. Heat exchange is in the side panels	Take gloves to touch side panels if needed

MAINTENANCE

Before any maintenance or cleaning work is carried out, **DISCONNECT** the appliance from the **ELECTRICITY** supply.

INTERNAL CLEANING

Clean the interior and accessories with warm water and bicarbonate of soda (5ml to 0.5 litre of water). Rinse and dry thoroughly. Do not use detergents, abrasive powders, highly perfumed cleaning products, wax polishes or cleaning products containing bleach or alcohol.

EXTERNAL CLEANING

Wash the outer cabinet with warm soapy water. Do NOT use abrasive products. There may be sharp edges on the underside of the product, so care should be taken when cleaning. Once or twice a year dust the rear of the appliance and the compressor at the back of the appliance, with a brush or vacuum cleaner, as an accumulation of dust will affect the performance of the appliance and cause increased energy consumption.

DEFROSTING

This production has automatic defrosting function, without manual operation.

WHEN THE APPLIANCE IS NOT IN USE

When the appliance is not in use for long periods, remove the contents, disconnect from the electricity supply and clean the appliance, leaving the door ajar until you wish to use the appliance again.

⚠ IMPORTANT! Ethereal oils and organic solvents can attack plastic parts, e.g. lemon juice or the juice for orange peel, butyric acid, cleanser that contain acetic acid.

REPLACING THE LAMP

The internal light is a LED type.

To replace the lamp, please contact qualified technician.

SPECIAL FOR NEW EUROPEAN STANDARD

The parts in the following table can be acquired from customer services.

Part	Provided By	Minimum Time Required for Provision
Thermostats	Professional maintenance personnel	At Least 7 years after the last model is launched on the market
Temperature Sensor	Professional maintenance personnel	At Least 7 years after the last model is launched on the market
Printed Circuit Board	Professional maintenance personnel	At Least 7 years after the last model is launched on the market
Light Source	Professional Repairers & Final Users	At Least 7 years after the last model is launched on the market
Door Handles	Professional Repairers & Final Users	At Least 7 years after the last model is launched on the market
Door Hinges	Professional Repairers & Final Users	At Least 7 years after the last model is launched on the market
Trays	Professional Repairers & Final Users	At Least 7 years after the last model is launched on the market
Baskets	Professional Repairers & Final Users	At Least 7 years after the last model is launched on the market
Door Gaskets	Professional Repairers & Final Users	At Least 10 years after the last model is launched on the market

PRODUCT DATA SHEET CONCERNING (EU) 2019/2019

The product data sheet for your appliance can be found online if you wish to download a copy.

Go to <https://eprel.ec.europa.eu> and enter the model identifier for your appliance to download the data sheet.

Alternatively you can download from www.ice-king.co.uk by going to the relevant product page.

The model identifier for your appliance can be found on the rating plate at the rear/ inside of the appliance.

GUARANTEE

YOUR 2-YEAR MANUFACTURER'S GUARANTEE

THIS DOES NOT AFFECT YOUR STATUTORY RIGHTS

Your new Iceking appliance carries a free guarantee which protects you against the cost of repairs during the first 24 months from date of purchase provided that any claim is accompanied by evidence of the model reference, model serial number and proof of purchase, such as a Sales Receipt, showing that the appliance was purchased within the 24 months prior to the date of claim.

YOUR GUARANTEE IS VALID ONLY IN THE UK & REPUBLIC OF IRELAND

To register your appliance, simply complete the card in your appliance pack and return it with a stamp affixed or alternatively you can register online at www.appliancesupport.co.uk/iceking

Service Helpline

Should your appliance develop a fault, please call the Iceking Service Helpline on: **0330 025 0179**

Please remember to have all your product details available, including the model number, serial number, date of purchase and your retailer's details before registering a fault.

Your service call cannot progress without this information.

 ICEKING

GUARANTEE & WEEE INFORMATION

WHAT YOUR GUARANTEE DOES NOT COVER


- Cost of callout where a fault cannot be found with the appliance
- Cost of callout for work covering routine maintenance, such as, but not exclusively, cleaning of filters or defrosting
- Cost of callout for work required to correct the alignment of doors following door reversal procedures carried out by you
- Use of the appliance by anyone other than the Householder
- Use in any non-domestic environment
- Consumable items, such as, but not exclusively, fuses in plugs, bulbs and breakable items which require routine replacement
- Cosmetic parts such as, but not exclusively, shelves, drawers, door balconies
- Repair costs incurred that have not been authorised by Iceking and/or carried out by a non-approved Iceking engineer

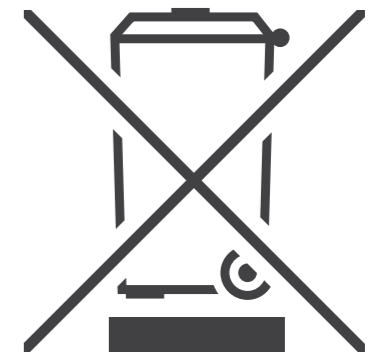
INSURANCE

Any guarantee provided with this product does not cover loss of fridge/freezer content.

Any claim for loss, damage, costs or expenses of an indirect or consequential nature including any economic loss or damage to foodstuffs or any other goods is excluded. We recommend that you inspect your fridge/freezer regularly to check that it is working correctly, losses can result from deterioration following breakdown or accidental failure of the appliance, fuses, plugs or public electricity supply, these can be covered by your standard home insurance or might require extra cover. Check with your insurance provider.

WEEE INFORMATION

 **IMPORTANT!** This appliance is marked according to the European directive 2002/96/EC on Waste Electrical and Electronic Equipment (WEEE). By ensuring this product is disposed of correctly, you will help prevent potential negative consequences for the environment and human health, which could otherwise be caused by inappropriate waste handling of this product. The symbol on the product, or on the documents accompanying the product, the Crossed Out Wheelie Bin, indicates that this appliance may not be treated as household waste. Instead it shall be handed over to the applicable collection point for the recycling of electrical and electronic equipment. Disposal must be carried out in accordance with local environmental regulations for waste disposal. For more detailed information about treatment, recovery and recycling of this product, please contact your local authority, your household waste disposal service or the retailer where you purchased the product.



Issue: 04/30.10.24



30
YEARS
ANNIVERSARY

1995-2025

Henry John House,
Northway Industrial Estate,
Northway Lane,
Ashchurch,
Tewkesbury,
Gloucestershire.
GL20 8JH

 **ICEKING**

T 0330 025 0179

E enquiries@ice-king.co.uk

ice-king.co.uk