




NINJA

COLD PRESS JUICER
POWERS THROUGH PULP FOR HASSLE-FREE JUICING*
JC151UK | Owner's Guide



IMPORTANT SAFETY INSTRUCTIONS

PLEASE READ ALL INSTRUCTIONS BEFORE USE • FOR HOUSEHOLD USE ONLY

	Read and review instructions for operation and use.
	Indicates the presence of a hazard that can cause personal injury, death, or substantial property damage if the warning included with this symbol is ignored.
	For indoor and household use only.
When using electrical appliances, basic safety precautions should always be followed, including the following:	

⚠ WARNING

To reduce the risk of injury, fire, electrical shock, or property damage, basic safety precautions must always be followed, including the following numbered warnings and subsequent instructions. Do not use appliance for other than intended use.

- 1 Read all instructions prior to using the appliance and its accessories.
- 2 Carefully observe and follow all warnings and instructions. This unit contains electrical connections and moving parts that potentially present risk to the user.
- 3 **DO NOT** submerge the motor base or control panel in water or other liquids.
- 4 **DO NOT** spray motor base or control panel with any liquid. Take inventory of all contents to ensure you have all parts needed to properly and safely operate your appliance.
- 5 Always make sure pulp spout is securely in place before motor is turned on. **DO NOT** unfasten parts while juicer is in operation.
- 6 Be sure to turn the appliance off after each use. Make sure the motor stops completely before disassembling.
- 7 Turn the appliance **OFF**, then unplug the appliance from the outlet when not in use, before assembling or disassembling parts, and before cleaning. To unplug, grasp the plug by the body and pull from the outlet. **NEVER** unplug by grasping and pulling the flexible cord.
- 8 Before use, wash all parts that may contact food. Follow washing instructions covered in this instruction manual.
- 9 Before each use, inspect auger for damage. If auger is bent or damage is suspected, contact SharkNinja to arrange for replacement.
- 10 **DO NOT** use this appliance outdoors. It is designed for indoor household use only.
- 11 **DO NOT** modify the plug in any way.
- 12 **DO NOT** operate any appliance with a damaged cord or plug, or after the appliance malfunctions, or is dropped or damaged in any manner. This appliance has no user-serviceable parts. If damaged, contact SharkNinja for servicing.
- 13 This appliance has important markings on the plug blade. The entire supply cord is not suitable for replacement. If damaged, please contact SharkNinja for service.
- 14 Extension cords should **NOT** be used with this appliance.
- 15 To protect against the risk of electric shock, **DO NOT** submerge the appliance or allow the power cord to contact any form of liquid.

*On 320g of carrots.

IMPORTANT SAFETY INSTRUCTIONS

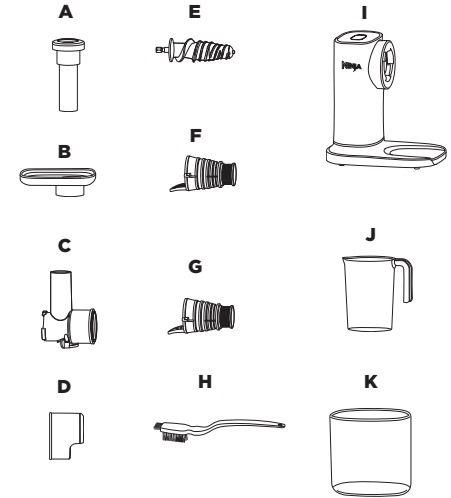
PLEASE READ ALL INSTRUCTIONS BEFORE USE • FOR HOUSEHOLD USE ONLY

- 16 **DO NOT** allow the cord to hang over the edges of tables or counters. The cord may become snagged and pull the appliance off the work surface.
- 17 **DO NOT** allow the unit or the cord to contact hot surfaces, including stoves and other heating appliances.
- 18 **ALWAYS** use the appliance on a dry and level surface.
- 19 **DO NOT** allow children to operate this appliance or use as a toy. Close supervision is necessary when any appliance is used near children.
- 20 This appliance is **NOT** intended to be used by people with reduced physical, sensory, or mental capabilities, or lack of experience and knowledge, unless they have been given supervision or instruction concerning use of the appliance by a person responsible for their safety.
- 21 **ONLY** use attachments and accessories that are provided with the product or are recommended by SharkNinja. The use of attachments, including canning jars, not recommended or sold by SharkNinja may cause fire, electric shock, or injury.
- 22 **DO NOT** put your fingers or other objects into the juicer opening while it is in operation. If food becomes lodged in opening, use the tamper or another piece of fruit or vegetable to push it down. When this method is not possible, turn the motor off and disassemble juicer to remove the remaining food.
- 23 Keep hands, hair, and clothing out of the container when loading and operating.
- 24 During operation and handling of the appliance, avoid contact with moving parts.
- 25 **DO NOT** use the appliance if the rotating sieve is damaged.
- 26 **DO NOT** operate the appliance without the pulp container in place.
- 27 **DO NOT** microwave container or accessories provided with the appliance.
- 28 **NEVER** leave the appliance unattended while in use.
- 29 **DO NOT** juice hot liquids. Doing so may result in pressure build-up and steam exposure that can pose a risk of the user being burned.
- 30 **NEVER** operate the appliance without lids and caps in place. **DO NOT** attempt to defeat the interlock mechanism. Ensure attachments are properly installed before operation.
- 31 Before operation, ensure all utensils are removed from container. Failure to remove utensils can cause container to shatter and potentially result in personal injury and property damage.
- 32 **DO NOT** attempt to remove the feed chute chamber from the motor base while the auger is still spinning. Allow the appliance to come to a complete stop before removing attachments.
- 33 If the appliance is overloaded, the unit will temporarily disable the motor. Wait approximately 2 minutes before using again.
- 34 **DO NOT** juice hot ingredients.
- 35 Remove the seeds and pits from fruits such as mangoes or plums, as well as peels and tough skins from fruits such as oranges, lemons, and limes, as they could damage the unit.
- 36 **DO NOT** add water to the feed chute while the unit is operating to clean the unit.
- 37 **DO NOT** submerge the motor base or control panel in water or other liquids.
- 38 **DO NOT** spray motor base or control panel with any liquid.
- 39 **DO NOT** attempt to sharpen auger.
- 40 Turn off the appliance and unplug the motor base before cleaning.
- 41 **DO NOT** add frozen fruit, frozen vegetables, or ice to the juicer.
- 42 Consumers with sensitivity to pulp may wish to strain their juice as a precaution.

SAVE THESE INSTRUCTIONS

PARTS

- A Tamper
- B Food Tray
- C Feed Chute Chamber with Anti-Drip Lever
- D Pulp Spout
- E Auger
- F Black Filter (less pulp)
- G Orange Filter (lots of pulp)
- H Cleaning Brush
- I Motor Base (power cord not shown)
- J Juice Jug
- K Pulp Container



BEFORE FIRST USE

IMPORTANT: Review all warnings at the beginning of this Owner's Guide before proceeding.

NOTE: All attachments are BPA free and dishwasher safe.

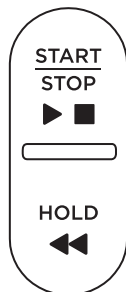
- 1 Remove all packaging materials from the unit.
- 2 Wash parts in warm, soapy water, then thoroughly rinse and air-dry all parts.
- 3 Wipe control panel with a soft cloth. Allow it to dry completely before using.

ORDERING REPLACEMENT PARTS

To order additional parts and attachments, visit ninjakitchen.co.uk.

FEATURES

USING THE CONTROL PANEL



START/STOP

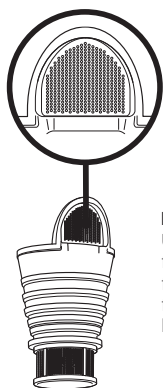
Press once to start continuous running up to 12 minutes; press again to stop.

HOLD

If the feed chute chamber becomes blocked or ingredients are not processing, press and hold **HOLD**. There will be a beep and a brief pause, then the auger will rotate in the opposite direction. Release **HOLD** to stop. Repeat as needed. Press **START/STOP** to resume normal operation.

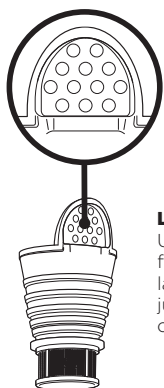
USING THE FILTERS FOR PULP CONTROL

Control the amount of pulp by choosing the appropriate filter.



LESS PULP

Use the Black filter with the finest mesh for juice with less pulp.



LOTS OF PULP

Use the Orange filter with the largest mesh for juice with lots of pulp.

NOTE: For best results, we recommend using the **Orange (Lots of Pulp) filter** when processing soft fibrous fruits like pears, berries, seeded melons, and pineapple.



To watch videos on how to use and clean the Ninja Juicer, scan the QR code.

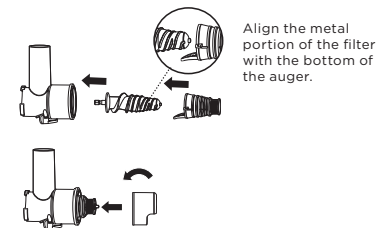
USING THE JUICER

IMPORTANT:

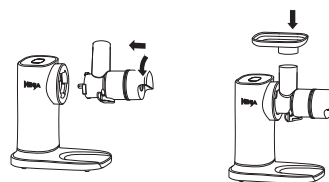
- Review all warnings before proceeding.
- **DO NOT** add frozen fruits and vegetables or ice to the unit.

NOTE: If the feed chute chamber becomes blocked or ingredients are not processing, press and hold **REVERSE**. There will be a beep and a brief pause, then the auger will rotate in the opposite direction. Release **REVERSE** to stop. Repeat as needed. Press **START/STOP** to resume normal operation.

- 1 Plug in motor base and place on a clean, dry, level surface such as a counter top or table.
- 2 Insert the auger into the feed chute chamber, then attach the desired filter onto the auger, with the metal portion of the filter on the bottom of the auger. The filter will sit loosely around the auger.
- 3 Attach the pulp spout to the feed chute chamber by installing at an angle on top of the filter, then turning counterclockwise to lock in place.



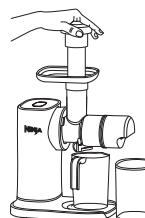
- 4 Install the assembled feed chute chamber on the motor base at an angle, then turn counterclockwise until it clicks into place.
- 5 Install the food tray on the top of the feed chute chamber.



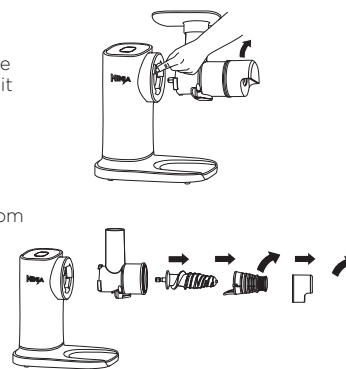
- 6 Place the pulp container under the pulp spout, then place the juice jug under the anti-drip lever on the feed chute chamber.



- 7 Select **START/STOP**, then gradually add ingredients to the feed chute. For best results, allow juicer to process each ingredient before adding more. Use the tamper to push ingredients down through the feed chute, as needed.
- 8 When juicing is complete, select **START/STOP**, then close the anti-drip lever. Stir juice and serve.



- 9 To disassemble, press and hold the **RELEASE** button while turning the feed chute chamber clockwise and removing it from motor base.
- 10 Remove the pulp spout from the feed chute chamber by turning clockwise. Remove the filter and auger by gently pulling them out of the feed chute chamber.
- 11 Unplug the unit when finished. If moving the unit, grab from the bottom of the base. Refer to the Care & Maintenance section for cleaning and storage instructions.



CARE & MAINTENANCE

IMPORTANT: DO NOT attempt to clean the unit by adding water to the feed chute chamber while attached to the motor base.

CLEANING

• Hand-Washing

Separate all parts and wash in warm, soapy water with a soft cloth. Thoroughly rinse and air-dry all parts.

• Dishwasher

All parts, except the motor base, are top-rack dishwasher safe and should **NOT** be cleaned with a heated dry cycle.

• Motor Base

Unplug the motor base before cleaning. Wipe with a clean, damp cloth.

• Filters

If there is pulp build up on the metal portion of the filter, use a cleaning utensil or toothpick to remove the excess before washing.

STORING

For cord storage, wrap cord with hook-and-loop fastener near the back of the motor base.

DO NOT wrap the cord around the bottom of the base for storage.

When moving the unit, lift from the bottom of the motor base. Store the auger and filter assembled in the feed chute chamber with the pulp spout installed. Place the juice jug into the pulp container for easy storage.

OVERLOADING THE UNIT

This unit features a unique safety system that prevents damage to the motor and drive system should you inadvertently overload the motor. If the unit is overloaded, the motor will be temporarily disabled. Should this occur, wait 2 minutes, then press **START/STOP** to start the unit.

If your unit needs servicing, please call Customer Service at 1-877-646-5288. So we may better assist you, please register your product online at registryourninja.com and have the product on hand when you call.

TROUBLESHOOTING GUIDE

⚠WARNING: To reduce the risk of shock and unintended operation, turn power off and unplug unit before troubleshooting.

The REVERSE program is not operating.

- After pressing and holding **REVERSE**, there will be a beep and a brief pause, then the auger will rotate in the opposite direction. Release **REVERSE** to stop. Repeat as needed. Press **START/STOP** to resume normal operation.

The unit stopped working and is beeping.

- The unit was overloaded with ingredients. Wait 2 minutes then press **START/STOP** to start the unit.

Can I juice fruit with seeds and pits in it?

- No. Seeds and pits should be removed from the fruit prior to juicing. For example, remove the seeds from cherries and the pit from a plum.

Can I juice frozen fruits and vegetables or add ice?

- No, do not use frozen fruit, frozen vegetables, or ice with this unit.

The unit makes a squeaking noise when I juice certain ingredients.

- When the auger is breaking down fibrous ingredients like apples, celery, herbs, and leafy greens, the unit will sometimes make this noise. This is normal and not a cause for concern.

The unit is producing less juice than I anticipated based on the amount of produce I used.

- With the Ninja Juicer, you can expect 450g of produce to yield approximately 250ml of juice.
- Depending on the seasonality of ingredients, you may experience lower juice and pulp yield when using the Less Pulp Filter. If this occurs, try using the Lots of Pulp Filter.

MANUFACTURER'S GUARANTEE

The Ninja Guarantee

When a consumer buys a product in the UK, they get the benefit of legal rights relating to the quality of the product (your "legal rights"). You can enforce your legal rights against your retailer, including Ninja if you bought your Ninja kitchen appliance from ninjakitchen.co.uk. However, at Ninja we are so confident about the quality of our products that we give the owner an additional, free parts and labour manufacturer's guarantee of up to 2 years.

The guarantee it comes with is an important consideration - and reflects how much confidence the manufacturer has in its product and manufacturing quality.

The manufacturer's guarantee does not affect your legal rights.

How long are new Ninja machines guaranteed for?

Our manufacturer's guarantee lasts for one year from the date of purchase as standard, or for two years if you register your purchase with us within 28 days.

How do I register my Ninja guarantee?

If you have purchased your Ninja kitchen appliance directly from ninjakitchen.co.uk your guarantee is registered automatically. If you bought it from anywhere else in the UK, you can register your guarantee online within 28 days of purchase.

- To register online, please visit www.ninjakitchen.co.uk/register-guarantee or scan the QR code in your instruction booklet.
- Keep a note of the date you purchased the machine.

IMPORTANT:

- **Keep your receipt** if you bought your Ninja kitchen appliance from anywhere except ninjakitchen.co.uk. You will need it to claim under your guarantee.
- The free Ninja guarantee only applies in the UK.

What are the benefits of registering my free Ninja guarantee?

When you register your guarantee, you will get an extra year of cover. We'll also have your details to hand if we ever need to get in touch. If you further agree to receive communications from us, you can also receive tips and advice on how to get the best out of your Ninja kitchen appliance and hear the latest news about new Ninja technology and launches.

What is covered by the free Ninja guarantee?

Repair or replacement (at Ninja's discretion) of your Ninja machine, including all parts and labour. What is not covered by the free Ninja guarantee?

- Normal wear and tear.
- Accidental damage or faults caused by negligent use or care, misuse, neglect, careless operation or handling of the Ninja kitchen appliance which is not in accordance with the Ninja Operating Manual supplied with your machine.
- Damage caused by use of the Ninja kitchen appliance for anything other than normal domestic household purposes.
- Damage caused by use of parts not assembled or installed in accordance with the operating instructions.
- Damage caused by use of parts and accessories which are not Ninja Genuine Components
- Faulty installation (except where installed by Ninja).
- Repairs or alterations carried out by parties other than Ninja or its agents.

How can I claim under the free Ninja guarantee?

Contact our customer service helpline on 0800 862 0453. For service hours please visit our website under 'Contact Us'. It's free to call, and you'll be put straight through to a Ninja representative. You'll also find online support at <https://support.ninjakitchen.co.uk/>. The Ninja representative will go through some troubleshooting with you, and if we conclude that the item has failed, we will send you a replacement part or a returns label to send the defective item back to us free of charge. When you have delivered the defective product to us, we will send you a replacement.

Please remember that the item will need to be boxed when you return it to us. It can be any suitable box, it does not have to be the original packaging.

Where can I buy genuine Ninja spares and accessories?

Ninja spares and accessories are developed by the same engineers who developed your Ninja kitchen appliance. You'll find a full range of Ninja spares, replacement parts and accessories for all Ninja machines at www.ninjakitchen.co.uk. Please remember that damage caused by the use of non-Ninja spares may not be covered under your guarantee.



REGISTER YOUR PURCHASE



ninjakitchen.co.uk/registerguarantee



Scan QR code using mobile device

RECORD THIS INFORMATION

Model Number: _____

Serial Number: _____

Date of Purchase: _____
(Keep receipt)

Store of Purchase: _____

TECHNICAL SPECIFICATIONS

Voltage: 220-240V-, 50-60Hz
Power: 150 Watts

**SharkNinja Europe Ltd,
1st/2nd Floor Building 3150,
Thorpe Park, Century Way,
Leeds, England, LS15 8ZB**

**+44 (0)800 862 0453
www.ninjakitchen.co.uk**

**SharkNinja Germany GmbH,
Rotfeder-Ring 9,
60327 Frankfurt am Main,
Germany**

www.ninjakitchen.eu

Illustrations may differ from actual product. We are constantly striving to improve our products, therefore the specifications contained herein are subject to change without notice.

NINJA is a registered trademark in the United Kingdom of SharkNinja Operating LLC.

© 2024 SharkNinja Operating LLC

JC151UK_IB_ColdPress_MP_Mv1_241002



@ninjakitchenuk