

Refrigerator  
**FOUR DOOR SERIES**

# USER MANUAL

MDRM706BIE\*



SmartHome



Download the app  
& activate product

Warning notices: Before using this product, please read this manual carefully and keep it for future reference. The design and specifications are subject to change without prior notice for product improvement. Consult with your dealer or manufacturer for details. The diagram above is just for reference. Please take the appearance of the actual product as the standard.

## THANK YOU LETTER

Thank you for choosing Midea! Before using your new Midea product, please read this manual thoroughly to ensure that you know how to operate the features and functions that your new appliance offers in a safe way.

EN

# CONTENTS

THANK YOU LETTER	01
SPECIFICATIONS	02
PRODUCT OVERVIEW	03
PRODUCT INSTALLATION	04
OPERATION INSTRUCTIONS	08
APP SETUP AND OPERATION	14
CLEANING AND MAINTENANCE	16
TROUBLE SHOOTING	18
APPENDIX	21

# SPECIFICATIONS

<b>Product model</b>	<b>MDRM706BIE</b>
Rated Voltage/Frequency	220-240V~/50Hz
Rated Current	1.8A
Total Volume	515L
Fresh Food Storage Compartment Volume	345L
Four-star Compartment Volume	170L
Freezing Capacity	13kg/24h
Temperature Rise Time	7h
Overall Dimension (W x D x H)	833x600x1910mm

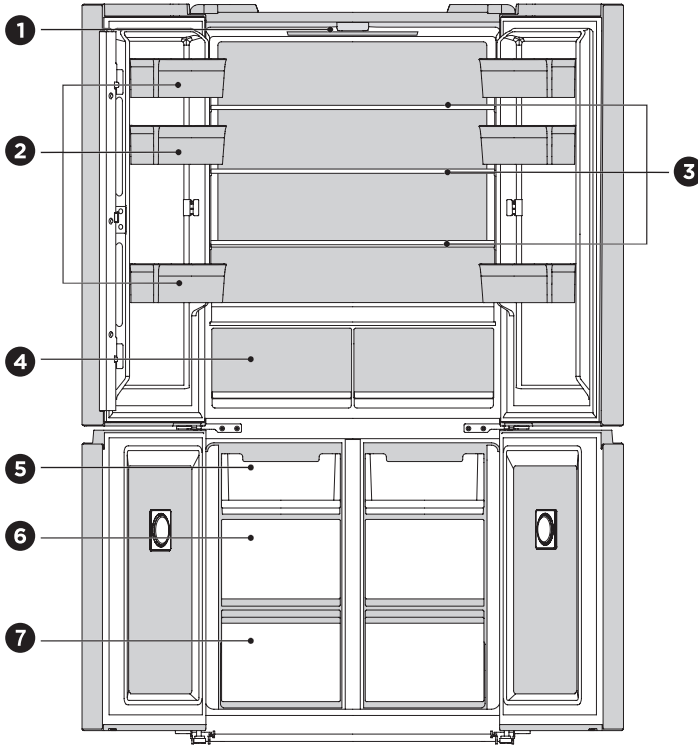


<b>Wireless Network module model</b>	<b>MWB-S-WB01</b>
Standard	IEEE 802.11b/g/n
Antenna Type	Printed PCB antenna
Frequency Band	2400-2483.5 MHz
Operating Temperature	0 °C - 85 °C Operation humidity: 10%-85%
Power Input	DC5V/500mA Maximum Transmission power: <20dBm

# PRODUCT OVERVIEW

## Names of components

### Normal type



- |   |                     |   |               |
|---|---------------------|---|---------------|
| 1 | LED lighting        | 5 | Up drawer     |
| 2 | Door tray           | 6 | Middle drawer |
| 3 | Glass Shelf         | 7 | Down drawer   |
| 4 | Refrigerator drawer |   |               |

### ATTENTION

The picture above is only for reference. The actual configuration will depend on the physical product or statement by the distributor.

EN

# PRODUCT INSTALLATION

## Install Instruction

### For refrigerating appliances with climate class

- Depending on the climate class, this refrigerating appliance is intended to be used at ambient temperatures range as specified following table.
- The product may not operate properly at temperatures outside of the specific range.
- You can find the climate class on the product label.

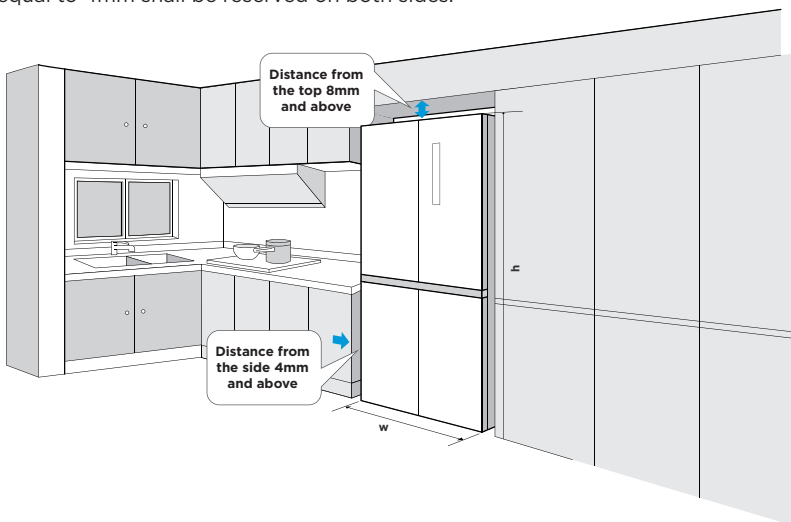
### Effective temperature range

- The product is designed to operate normally in the temperature range specified by its class rating.

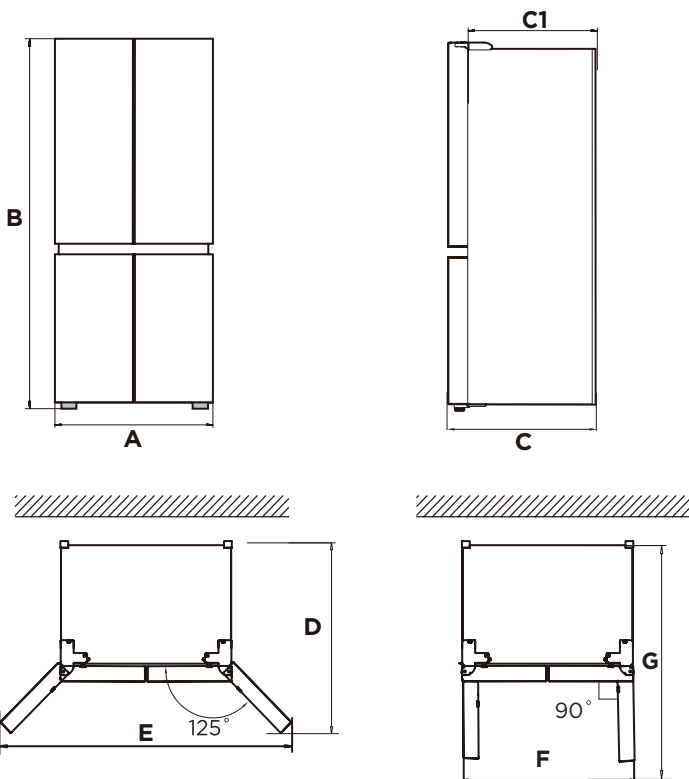
Class	Symbol	Ambient temperature range °C	
		IEC 62552 (ISO 15502)	ISO 8561
Extended temperate	SN	+ 10 to + 32	+ 10 to + 32
Temperate	N	+ 16 to + 32	+ 16 to + 32
Subtropical	ST	+ 16 to + 38	+ 18 to + 38
Tropical	T	+ 16 to + 43	+ 18 to + 43

## Refrigerator Placement

- To ensure the normal operation of the refrigerator, enough space shall be reserved around the refrigerator to maintain air circulation. A distance greater than or equal to 8mm shall be reserved at the top of the refrigerator, and a distance greater than or equal to 4mm shall be reserved on both sides.



Space requirement diagram (when the door is open and when the door is closed)



EN

Width	Overall Height	Depth	Without door	Depth doors open 125°	Width doors open 125°	Width doors open 90°	Depth doors open 90°
A	B	C	C1	D	E	F	G
833	1910	600	540	930	1280	833	980

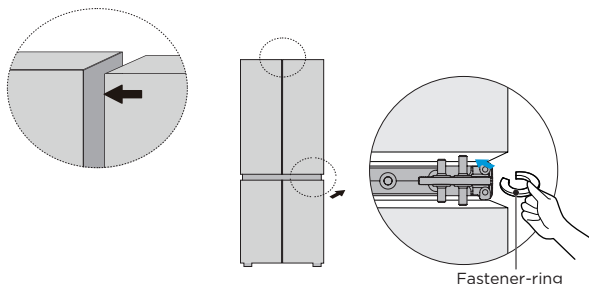
Notice: All dimensions in mm.

## Leveling feet

- To avoid vibration, the appliance must be leveled.
- If required, adjust the leveling feet to compensate for the uneven floor.
- The front should be slightly higher than the rear to aid in door closing.
- Leveling feet can be turned easily by tipping the cabinet slightly.
- Turn the leveling feet counter clockwise ↶ to raise the unit, clockwise ↷ to lower it.

## Leveling doors

- Precautions before operation:
- Before operation of accessories, it shall be ensured that the refrigerator is disconnected from power.
- Before adjusting the door, precautions shall be taken to prevent any personal injury.
- Schematic diagram of leveling the door body.



- Raise the lower door up to the level of the higher door;
- Insert the supplied fastener-ring by using plier in the gap between the hinge-grommet and the lower hinge. The number of fastener-rings you will need to insert depends on the gap.

## Moving the appliance

- Remove all items from the appliance.
- Pull the power plug out, insert and fix it into the power plug hook at the rear or on top of the appliance.
- Tape parts such as shelves and the door to prevent from falling off while moving the appliance.
- Move the appliance with more than two people carefully. When transporting the appliance over a long distance, keep the appliance upright.

### ⚠ ATTENTION

Precautions before operation:

Before making changes the refrigerator must be disconnected from power. precautions should be taken to prevent any personal injury.

## Changing the light

- Any replacement or maintenance of the LED lamps is intended to be made by the manufacturer, its service agent or similar qualified person.

### ATTENTION

This product contains a light source of energy efficiency class (F).

## Connecting the appliance

After installing the appliance, connect the power plug into a socket outlet.

### ATTENTION

After connecting the power supply cord (or plug) to the outlet, wait 2 or 3 hours before you put food into the appliance. If you add food before the appliance has cooled completely, your food may spoil.

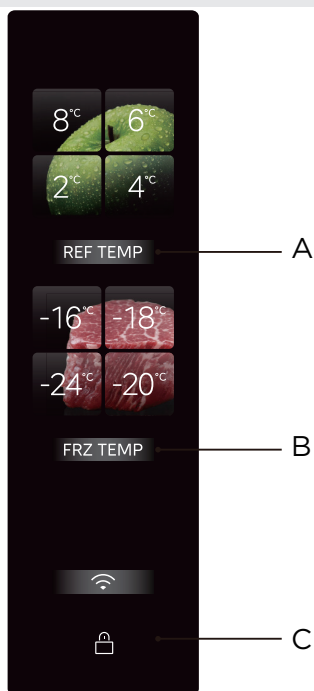
## Tips for energy saving

- Do not place the appliance near cookers, radiators or other heat sources. If the ambient temperature is high, the compressor will run more frequently and for longer, resulting in increased energy consumption.
- Ensure that there is sufficient ventilation at the base of the appliance, on the sides of the appliance and at the back of the appliance.
- Please also observe the spacing dimensions in the chapter "Installation".
- The arrangement of drawers, shelves and trays as shown in the product overview offers the most efficient use of energy and should be retained as far as possible.
- To obtain a larger storage space (e.g. for large refrigerated/frozen goods), the middle drawers and shelves can be removed. The top and bottom drawers and shelves should be removed last if necessary.
- An evenly filled refrigerator/freezer compartment contributes to optimal energy use.
- Allow warm food to cool before placing it in the refrigerator/freezer compartment. Food that has already cooled down increases energy efficiency.
- Allow frozen food to defrost in the refrigeration compartment. The coldness of the frozen food reduces the energy consumption in the refrigerator compartment and thus increases the energy efficiency.
- Open the door only as briefly as necessary to minimise cold loss. Opening the door briefly and closing it properly reduces energy consumption.
- Setting the temperature no colder than necessary contributes to optimal energy use.
- The door gaskets of your appliance must be perfectly intact so that the doors close properly and energy consumption is not increased unnecessarily.

# OPERATION INSTRUCTIONS

## Control panel

EN



	Button
A	Refrigerator temperature setting
B	Freezer temperature setting
C	Lock/Unlock button

### ATTENTION

- The actual control panel may differ from model to model.
- The control panel will turn off automatically for energy saving.

### Initial power-on

- After the refrigerator is powered on for the first time, the display screen lights up, and the refrigerating or freezing compartment can be adjusted according to family needs. For adjustment guidelines, please refer to the temperature setting section of this page.

### Lock /unlock

- In the locked state, press and hold the [Lock/Unlock] button for 3s to enter the unlocked state, and the unlock buzzer will sound.



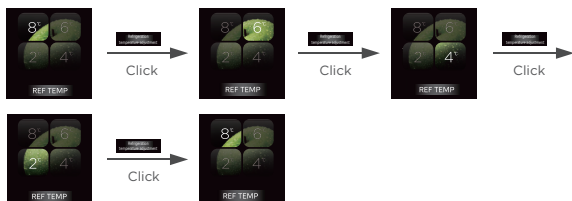
- In the unlocked state, press and hold the [Lock/Unlock] button for 3s to enter the locked state, and the lock buzzer will sound.



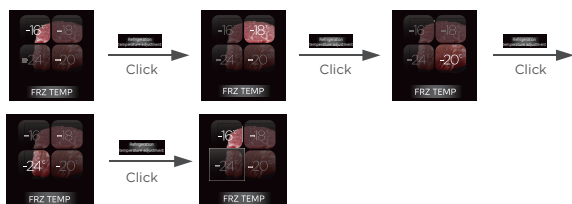
- Except for the alarm sound release operation that can be carried out in the locked state, the following button operations must be carried out in the unlocked state; otherwise, an error buzzer will be given.

### Refrigeration/freezing temperature setting

- Press the refrigeration temperature adjustment button to adjust the temperature of the refrigerating compartment. Each time the refrigeration button is pressed, the temperature changes once;



- It will take effect after being locked.
- Press the freezing temperature adjustment button to adjust the temperature of the refrigerating compartment. Each time the refrigeration button is pressed, the temperature changes once;



- It will take effect after being locked.
- Press the button **REF TEMP** + **[Wi-Fi icon]** for 4S at the same time to enter/exit the refrigeration off mode. When it is turned off, the refrigeration area goes out.
- After turning it off, press and hold the button **REF TEMP** + **[Wi-Fi icon]** again for 4S to enable the refrigeration function, which will be displayed on the screen.
- You can click to close the refrigerating compartment in Smarthome. After turning it off, the freezing compartment will work normally, and the refrigerating compartment will no longer refrigerate. It will work normally after turning it on again.

## Super cooling mode setting

- Press and hold the **REF TEMP** button for 3S, the 2°C indicator is always on, and other indicators of refrigeration are off.the refrigerating compartment operates in super cooling mode.

## Super freezing mode setting

- Press and hold the **FRZ TEMP** button for 3S, -24°C indicator is always on, and other indicators of freezing are off.the freezing compartment is operated in quick freezing mode.

## IPL purify drawer

- The IPL purify drawe can instantaneously sterilize and remove viruses for 3 minutes without disturbing the original freshness of food materials; it can instantaneously kill bacteria and viruses on the surface of food materials by penetrating and irradiating food materials with instantaneous pulse strong light, which can effectively sterilize 99.999% in 3 minutes, and can directly sterilize food materials through common packaging bags, which is convenient to use; 3-minute pulse sterilization needs to be started manually.After closing the door for sterilization for 3 minutes, the function will be automatically turned off and the display screen will go out.



Press and hold



Glass partition operating button

IPL PURIFY mode on

## V-tech fresh drawer

- Provide you with experience of keeping meat, seafood, and other products fresh without freezing.
- Poultry and livestock can be stored in the meat mode. To ensure the taste of meat, it is recommended that you seal it before storage.
- V-tech fresh drawer is the meat preservation expert; millisecond radar temperature sensing directly senses the freezing point temperature of food materials, and combined with Midea V-TECH intelligent cloud preservation technology, it can maintain the original taste of meat for 7 days without freezing.
- The large volume design allows more food materials to be stored, and the doublelayer design meets the partitioned storage of different food materials to prevent cross-infection and odor mixing.



Press and hold



Glass partition operating button

V-TECH FRESH mode on

### PST+ purification module

- The unique PST+ intelligent purification technology of the Midea refrigerator can quickly remove odor, with a sterilization rate as high as 99.999% and a virus removal rate as high as 99.9%. It also has the function of removing ethylene and sulfide to comprehensively protect the health of you and your family
- The odor removal function device can meet the service life of ten years (accelerated aging, simulation test), without consumables and replacement.

### Frozen odor removal module

- An odor removal and sterilization module is arranged at the door liner, which can effectively degrade odor and bacteria.

### Door opening alarm and door opening prompt sound

- When the refrigerator door is not closed for 120s, a short alarm sound will be given to prompt that the door is not closed. Please close the door in time or click any button in the operation area of the display screen to end the alarm sound.

### Power failure memory

- When the refrigerator is powered on again after a power failure, the temperature setting and mode setting status of the display screen before the power failure will be restored.

### Fault indication

- The following warnings appearing on the display indicate corresponding faults of the refrigerator. Though the refrigerator may still have cold storage function with the following faults, the user shall contact a maintenance specialist for maintenance, so as to ensure optimized operation of the appliance.

Fault Code	Fault Description
The 8°C refrigerating lamp and the refrigerating button lamp flash	Refrigeration sensor fault
The -16°C freezing lamp and freezing button lamp flash	Freezing sensor fault
The 4°C refrigerating lamp flashes	Microcrystal main sensor or microcrystal 1 sensor fault
The 6°C refrigerating lamp flashes	Fault of ambient temperature sensor
The 2°C refrigerating lamp flashes	Humidity sensor fault
The -18°C freezing lamp flashes	Freezing and defrosting sensor fault
The refrigerating button lamp and the freezing button lamp flash	Fault of main display communication
The -20°C freezing lamp and microcrystal board lamp flash	Microcrystal and pulse communication fault
The -24°C freezing lamp and pulse board lamp flash	Pulse and main control communication fault

## Tips on storing food

### Freezer compartment

- The freezer compartment is designated for the low-temperature freezing of food, long-term storage of frozen food, and for the production of ice cubes.
- Pay attention to the star classifications (4 star, 2 star and 1 star) in the freezer compartment and the resulting storage periods for frozen food.
- Do not put fresh and frozen food next to each other. The frozen food may thaw.
- When freezing large amounts of fresh food (such as meat, fish or chopped meat), please divide them into several small pieces before putting in, so that they can be quickly frozen and pick up easily.
- Abide by the storage times recommended by food manufacturers on the packages, there is no information on the packaging, food should not be stored frozen for longer than three months from the date of purchase.
- When purchasing frozen food, make sure that it was frozen at a suitable temperature and that the packaging is not damaged.
- Frozen food should be kept in suitable individual packages to ensure that adjacent food cannot be contaminated. Consume thawed and defrosted foods immediately, do not refreeze them.
- In case of prolonged power failure or malfunction of the appliance, remove the stored frozen food and check whether they are still edible, then store them in a sufficiently cool place or in another appliance.
- To defrost food, remove it from the freezer and let it defrost at room temperature or in the refrigerator. To defrost food quickly, you can use the defrost function on your microwave, for example.
- If you only want to defrost part of a pack, remove the portion you need and immediately close the rest of the pack. In this way, you will avoid “freezer burn” and will reduce ice formation on the remaining foods.

### Cooling compartment

- To reduce moisture and subsequent ice build-up, never put liquid into the fridge compartment in unsealed containers. Frost tends to concentrate in the coolest parts of the evaporator. Storing uncovered liquids results in a more frequent need for defrosting.
- Never put warm foods in the fridge compartment. These should first cool down at room temperature and then be placed so as to ensure adequate air circulation in the fridge compartment.
- Foods or food containers should not touch the back wall of the fridge because they could freeze to the wall. Do not keep regularly opening the door of the refrigerator.
- Meat and clean fish (packed in a package or plastic foil) can be placed in the fridge compartment, which can be used in 1-2 days.
- Fruit and vegetables without packaging can be placed in the part designated for fresh fruit and vegetables.

#### ATTENTION

- The optimal temperature setting of each compartment depends on the ambient temperature. Above optimal temperature is based on the ambient temperature of 25 °C.
- When conducting energy consumption tests, please turn off the V-tech fresh and IPL purify functions of the refrigerator compartment.

Order	Compartments TYPE	Target stor- age temp. [°C]	Appropriate food
1	Fridge	$+2 \leq x \leq +8$	Eggs, cooked food, packaged food, fruits and vegetables, dairy products, cakes, drinks and other foods not suitable for freezing.
2	 Four-star rating frozen	$x \leq -18$	With freezing capacity, fast freezing speed, can quickly freeze and store food. Suitable for frozen fresh food such as seafood (fish, shrimp, shellfish), freshwater aquatic products and meat products. Recommended for 3 - 6 months, the longer the storage time, the worse the taste and nutrition.
3	 Three-star rating frozen	$x \leq -18$	With freezing capacity. Suitable for frozen fresh food such as seafood (fish, shrimp, shellfish), freshwater aquatic products and meat products. Recommended no more than 3 months.
4	 Two-star rating frozen	$x \leq -12$	Only suitable for medium-term storage of already frozen food, e.g. ice cream. Recommended no more than 1 month.
5	 One-star rating frozen	$x \leq -6$	Only suitable for refrigeration, and short-term storage of small quantities of already frozen food. Recommended no more than 1 week.
6	0-star	$-6 \leq x \leq 0$	Fresh pork, beef, fish, chicken, some packaged processed foods, etc. (Recommended to eat within the same day, preferably no more than 3 days). Partially encapsulated processed foods (non-freezable foods).
7	Chill	$-2 \leq x \leq +3$	Fresh/ frozen pork, beef, chicken, freshwater aquatic products, etc. (7 days below 0°C and above 0°C is recommended for consumption within that day, preferably no more than 2 days). Seafood less than 0 for 15 days, it is not recommended to store above 0°C.
8	Fresh food	$0 \leq x \leq +4$	Fresh pork, beef, fish, chicken, cooked food, etc. (Recommended to eat within the same day, preferably no more than 3 days)
9	Wine	$+5 \leq x \leq +20$	Red wine, white wine, sparkling wine, etc.

### ● ATTENTION

please store different foods according to the compartments or target storage temperature of your purchased.

# APP SETUP AND OPERATION

## Download the SmartHome App

On an app market (Google Play Store, Apple App Store), search for "SmartHome" and find the SmartHome app. Download and install it on your phone. You can also download the app by scanning the QR code below.



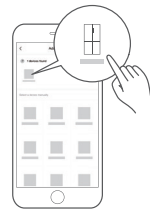
## Register and log in

Open the SmartHome app, and create a new account to start (you can also register through a third-party account). If you already have an existing account, use the account to log in.



## Connect your devices to SmartHome

1. Please make sure your mobile phone is connected to a wireless network. If it is not, go to Settings and enable wireless networks and Bluetooth.
2. Please power on your devices.
3. Open SmartHome App on your phone.
4. If a message of "Smart devices discovered nearby" appears, click to add.
5. If no message appears, select "+" on the page and select your device in the list of nearby devices available. If your device is not listed, please add your device manually by the device category and device model.
6. Connect your device to the wireless network according to instructions on app. If the connection fails, please follow the instructions provided by the app to continue with the operation.



 **NOTE**

1. Make sure your devices are powered on.
2. Keep your mobile phone close enough to your device when you are connecting your device to the network.
3. Connect your mobile phone to the wireless network at home, and make sure you know the password of the wireless network.
4. Check if your wireless router supports 2.4 GHz band and turn it on. If you are not sure whether the router supports 2.4 GHz band, please contact the router manufacturer.
5. The device cannot connect to the wireless network that requires authentication, and it usually appears in public areas such as hotels, restaurants, etc. Please connect to a wireless network that does not require authentication.
6. Turn off the WLAN+ (Android) or WLAN Assistant (iOS) function of your mobile phone when connecting your device to the network.
7. In the case that your device connected to a wireless network before but it needs to reconnect, please click “+” on the app Home page, and add your device again by the device category and model according to the instructions on app.

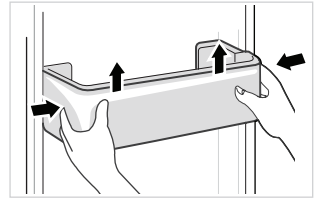
# CLEANING AND MAINTENANCE

## Defrosting

- The refrigerator is based on the air-cooling principle and thus has automatic defrosting function. Frost formed due to change of season or temperature can be manually removed by disconnection of the appliance from power supply or by wiping with a dry towel.

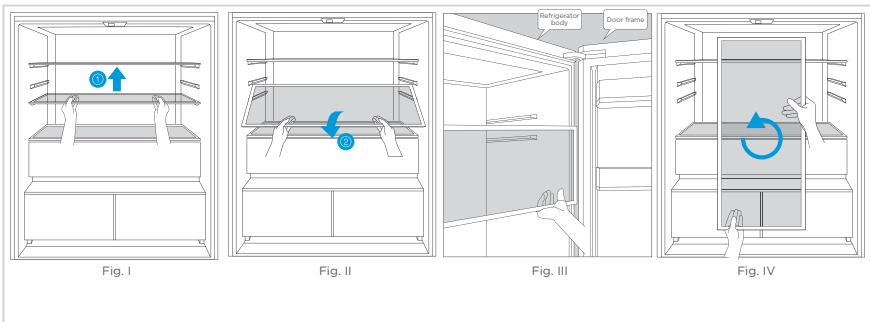
## Cleaning of door tray

- According to the direction arrow in the figure, use both hands to squeeze the tray, and push it upward, then you can take it out.
- After cleaning the door tray, place the tray into the slot on the door and press down until it is in place. On some model products you can adjust its installing height.



## Cleaning of glass shelf

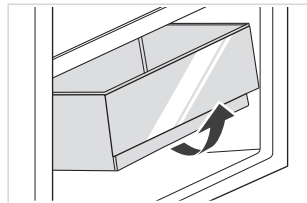
- Lift the rear end of the shelf in the direction to separate it from the slot (as shown in Fig. I).
- Extract the shelf outwards and press it down to vertical (as shown in Fig. II).
- Translate the vertical shelf outward to the gap between the refrigerator body and the door frame (as shown in Fig. III), and then rotate 90° (as shown in Fig. IV) to take out the shelf. It is recommended to take the door tray corresponding to the shelf before taking out the glass shelf.
- After cleaning the glass shelf, place the shelf horizontally on the rails and push inwards until the backstop into the slot. On some model products you can adjust its installing height.



- The installation order is reverse to the removal order. After installation, please confirm whether it is fixed properly.

## Cleaning the drawer

- Remove the contents of the drawer. Hold the handle of the drawer and pull it out completely until it stops.
- Lift the drawer up and remove it out.



**ATTENTION**  
Soft towels or sponge dipped in water and non-corrosive neutral detergents are suggested for cleaning. The freezer of shall be finally cleaned with clean water and dry cloth. Open the door for natural drying before the power is turned on. Do not use hard brushes, clean steel balls, wire brushes, abrasives, such as toothpastes, organic solvents (such as alcohol, acetone, banana oil, etc.), boiling water, acid or alkaline items clean refrigerator considering that this may damage the fridge surface and interior.

## Stop using

### Power failure:

In case of power failure, even if it is in summer, foods inside the appliance can be kept for several hours; during the power failure, the times of door opening shall be reduced, and no more fresh food shall be put into the appliance.

### Long-time nonuse:

The appliance shall be unplugged and then cleaned; then the doors are left open to prevent odor.

### Moving:

Before the refrigerator is moved, take all objects inside out, fix the glass partitions, vegetable holder, freezing chamber drawers and etc. with tape, and tighten the leveling feet; close the doors and seal them with tape. During moving, the appliance shall not be laid upside down or horizontally, or be vibrated; the inclination during movement shall be no more than 45°.

## CAUTION

The appliance shall run continuously once it is started. Generally, the operation of the appliance shall not be interrupted; otherwise the service life may be impaired. Foods can be preserved for a couple of hours even in summer in case of power failure; it is recommended to reduce the frequency of opening door.

# TROUBLE SHOOTING

The following simple issues can be handled by the user. Please call the after-sale service department if the issues are not solved.

Problem	Possible Causes	Solution
Not operate	The power supply is not turned on and the plug is not firmly inserted. Low voltage, power failure or part of the circuit tripped.	Insert the power cord plug firmly. Check the power supply at home.
Light not on	The appliance is not powered on. The light is broken.	Unplug and re-plug the power cord. Replace the light with a new one.
Fruits or vegetables are frozen	Has the food been placed at the back of the fridge? The area near the back wall is where the temperatures are coldest. Fruits or vegetables are stored in the Fresh/Chill zone.	Not placing food which may freeze easily at the back of the fridge compartment. The Fresh/Chill zone is only for meat/fish.
Fridge/freezer is over-cooling	Temperature control is not set correctly.	Set the temperature higher.
Compressor working for a long time	High ambient temperature causing long working time. Putting too much food in at one time. Food is put in before it has cooled down. Opening the door too often. The frost layer inside is too thick.	This is normal. Do not put too much food in at one time. Wait until the food has cooled down before putting it in. Do not open the door too often. Need to defrost.
Door does not close properly	Door is stuck with objects. Too much food in. Door gasket deformed.	Do not put in too much food. Place the appliance stably. Heat the door gasket, then cool it for restoration (with an electrical drier or hot water for heating).
Outer wall is hot	When the appliance is operating, heat is dissipated to the outside through the metal tubes inside the cabinet. Higher ambient temperatures in the summer cause the temperature of the outer wall to rise.	Higher temperature on the outer wall is normal. Increase the heat dissipation space, or put the appliance in a ventilated and cool place.
Cross or vertical beams are hot	There are metal tubes inside the beams, and the heat released from the tubes prevents condensation.	This is normal.
Odors	Spoiled food Food with strong odors The interior compartment is dirty.	Clean and remove any spoiled food. Make sure strong smelling food is wrapped airtight. Clean the interior compartment.
The actual temperature differs from the set temperature	When warm food is put in, the temperature will rise temporarily. After setting a new temperature, it will take some time for the temperature in the compartment to reach the set temperature when the door is not opened. After the temperature stability, the actual temperatures at different locations within the compartment are different, with a deviation of about $\pm 3^{\circ}\text{C}$ .	This is normal. Wait for some time before testing the actual temperature.
Condensation forms on the outside	Condensation may form when the humidity in the room is high.	This is normal. Wipe off the condensation using a dry cloth.

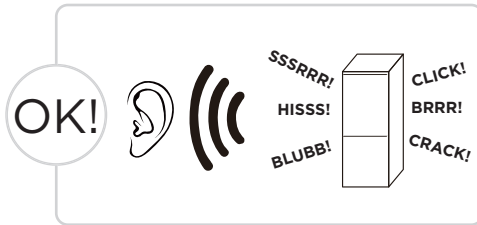
Problem	Possible Causes	Solution
Condensation forms inside the fridge and drawers	The fridge maintains a high humidity to keep vegetables and other food items fresh. Humidity is too high in the room and doors have been opened frequently. The door gasket are not tight.	Wipe off the condensation using a dry cloth. Do not open doors as frequently or do not keep them open too long. Check the door gasket, clean or correct position.
Frost around the vents	Door is not closed properly. The door gasket are not tight.	Make sure food does not block the door. Check the door gasket, clean or correct position.
Hard to open the door	The difference in air pressure between the inside and outside of the compartment may sometimes make it hard to open the freezer door.	Wait a few moments, and then try to open the door slowly.
Not making ice cubes (Only models with ice maker)	The ice making function not turned on. The appliance is not being supplied with water. The water pipe has kinks in it. The water pipe connection is installed incorrectly. Water pressure is too low.	Switch on the ice maker. Check whether the water supply is on. Straighten out the kinks. Check the water connection. Check the pressure of the water supply, or whether the filter is clogged.

**Certain sounds can be heard during normal use of the refrigerator, which do not affect its correct operation.**

**Sounds, which can be easily prevented:**

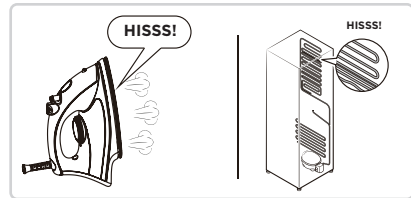
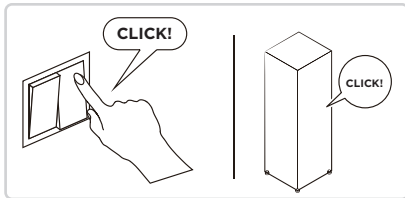
- Noise caused by the appliance which is not level - adjust the position with the adjustable turn-in front feet. Alternatively, place pads made of soft material under the rear rollers, especially when the appliance is placed on tiles.
- Touching the adjacent piece of furniture - move the refrigerator away.
- Creaking of the drawers or shelves - take out and put back the drawer or shelf.
- Sounds of clinking bottles - move bottles apart.

Do you hear these abnormal sounds as below? Usually these sounds are normal.



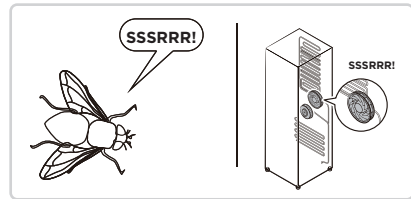
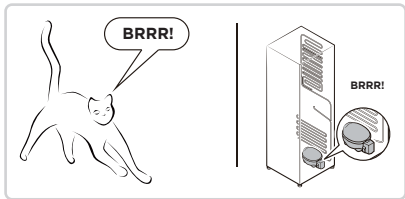
**CLICK:** Some electrical parts in the refrigerator, such as electric valve will make this noise when working. This is normal.

**HISS:** When the refrigerant flows into the evaporator, it will make this noise. This is normal.



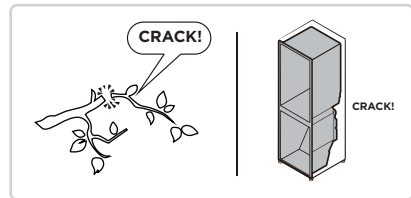
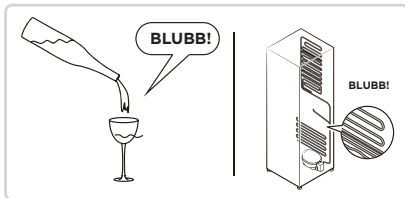
**BRRR:** The compressor will make this noise when working, and the buzzes are loud particularly upon start or stop. This is normal.

**SSSRRR:** The fan motor in the No frost refrigerator will make this noise when working. This is normal.



**BLUBB:** Refrigerant flowing through the pipes in the refrigerator will make this noise. This is normal.

**CRACK:** Cracking sound or broken ice sound: the overall structure of the refrigerator, air duct frost will be with the thermal expansion and contraction of the expansion sound, these are also normal physical phenomenon.



# APPENDIX

## Special for new European standard

The ordered parts in the following table can be acquired from Service provider channel

Ordered part	Provided by	Minimum time required for Provision
Thermostats	Professional maintenance personnel	At least 7 years after the last model is launched on the market
Temperature sensors	Professional maintenance personnel	At least 7 years after the last model is launched on the market
Printed circuit boards	Professional maintenance personnel	At least 7 years after the last model is launched on the market
Light sources	Professional maintenance personnel	At least 7 years after the last model is launched on the market
Door handles	Professional repairers and final users	At least 7 years after the last model is launched on the market
Door hinges	Professional repairers and final users	At least 7 years after the last model is launched on the market
Trays	Professional repairers and final users	At least 7 years after the last model is launched on the market
Baskets	Professional repairers and final users	At least 7 years after the last model is launched on the market
Door gaskets	Professional repairers and final users	At least 10 years after the last model is launched on the market

## Dear customer

1. If you want to return or replace the product, please contact the store where you buy.

(Remember to bring the purchase invoice)

2. If your product breaks down which needs to repair, please contact after-sales service provider.

## ATTENTION

The model information in the product database, as well as the model identifier, can be obtained through a weblink scanned by a QR code, if any, on the energy efficiency label of the product.

For more information about the energy efficiency of the appliance, visit <https://ec.europa.eu> and search using the model name.

The model name can be found on the rating label of the appliance.

# DOC AND CERTIFICATIONS

## Declaration of Conformity

We hereby confirm that the following customer model names and Midea model names match each other respectively.

Brand	Marketing Model	Factory Model
Midea	MDRM706BIE70	BCD-527

Application of Council Directives  
Standards, to which Conformity Is Declared

EN IEC 55014-1:2021  
EN IEC 55014-2:2021  
EN IEC 61000-3-2:2019/A1:2021  
EN 61000-3-3:2013/A2:2021  
EN 301 489-1 V2.2.3:2019  
Draft EN 301 489-17 V3.2.6:2023  
EN 300 328 V2.2.2:2019  
EN 62311:2008  
EN 50665:2017  
EN 50663:2017  
EN IEC 60335-2-24:2022/A11:2022  
EN 60335-1:2012/A15:2021  
EN 62233:2008

Manufacturer's Name: Hefei Hualing Co., Ltd  
Manufacturer's Address: No. 176 Jinxiu road, hefei economic and technical development area, hefei, china, 230601.

We, Hefei Hualing Co., Ltd hereby declare that the above-mentioned products comply with the above-mentioned currently valid regulations and standards.

SIGNATURE: *Kristen Chan*

Date: 2024/4/11



*make yourself at home*



[www.midea.com](http://www.midea.com)

© Midea 2022, všechny práva vyhrazené