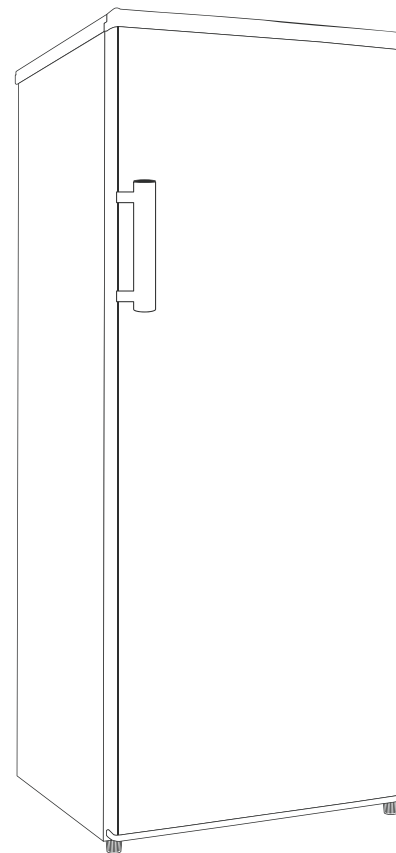


How to use your new Larder Fridge

Model MTL55250 MTL55300



Fridgemaster[®]

SAFETY



WARNING

IT IS HAZARDOUS FOR ANYONE OTHER THAN AUTHORISED SERVICE PERSONNEL TO CARRY OUT SERVICING OR REPAIRS WHICH INVOLVE THE REMOVAL OF COVERS.

TO AVOID THE RISK OF AN ELECTRIC SHOCK DO NOT ATTEMPT REPAIRS YOURSELF.



Locks

If your refrigerator is fitted with a lock, to prevent children being entrapped keep the key out of reach and not in the vicinity of the appliance. If disposing of an old refrigerator, break off any old locks or latches as a safeguard.

The appliance was designed and manufactured in compliance with international safety standards. The following warnings are provided for safety reasons and must be read carefully.



CE marking certifies that this appliance conforms to:
Low Voltage Equipment - 73/23/EEC & 93/68EEC
Electromagnetic Compatibility - 89/336/EEC, 92/31EEC & 93/68EEC

Information concerning disposal

Disposal of packaging



The packaging protects your appliance from damage during transit. Please contribute to a better environment by disposing of the packaging materials in an environmentally friendly manner.

Observe local environmental standards when disposing of packaging material for recycling purposes.

Please ask your dealer or inquire at your local authority about current means of disposal.

Keep packaging materials out of the reach of children! It can become a choking or suffocation hazard.

Disposal of your old appliance



Old appliances are not worthless rubbish! Recycling old appliances can reclaim valuable raw materials.



This appliance has been identified in accordance with the European directive 2002/96/EC on Waste Electrical and Electronic Equipment – WEEE.

The directive requires that old household electronic appliances must not be disposed of in the normal unsorted municipal waste stream. Old appliances must be collected separately in order to optimise the recovery and recycling of the materials they contain and reduce the impact on human health and the environment. The crossed out "wheeled bin" symbol on the product reminds you of your obligation, that when you dispose of the appliance it must be separately collected.

Consumers may take their old appliances to public waste collection areas, other communal collection areas, or if national legislation allows return it to a retailer when purchasing a similar new product.

Old appliances still have some residual value. An environmentally friendly method of disposal will ensure that valuable raw materials can be recovered and used again. The refrigerant used in your appliance and insulation materials require special disposal procedures. Ensure that none of the pipes on the back of the appliance are damaged prior to disposal. Up to date information concerning options for disposing of your old appliance and packaging from the new one can be obtained from your local council office.

Redundant appliances:

Cut off the mains plug and discard it. Refrigerators contain refrigerants and the insulation contains gases. Refrigerant and gases must be disposed of properly.

Ensure the tubing of the refrigerant circuit is not damaged prior to proper disposal.

SAFETY

Safety and warning information

Before you switch ON the appliance

Please read the operating and installation instructions carefully. They contain important information on how to install, use and maintain the appliance. Keep all documentation for subsequent use or for the next owner.

Technical safety

This appliance contains a small quantity of environmentally friendly but flammable R600a refrigerant. Ensure that the tubing of the refrigeration circuit is not damaged during transportation and installation. Leaking refrigerant may ignite.

If damage has occurred

- Keep naked flames and/or ignition sources away from the appliance.
- Pull out the mains plug.
- Thoroughly ventilate the room for several minutes.
- Notify customer services.

The more refrigerant an appliance contains, the larger the room must be. Leaking refrigerant can form a flammable gas-air mixture in rooms which are too small. The room must be at least 1m³ per 8g of refrigerant. The amount of refrigerant in your appliance is indicated on the rating label on your appliance.

Important information when using the appliance

- This appliance is not intended for use by persons (including children) with reduced physical, sensory or mental capabilities, or experience or knowledge, unless they have been given supervision or instructions concerning the use of the appliance by a person responsible for their safety. Children should be supervised to ensure that they do not play with the appliance.
- If the supply cord is damaged, it must be replaced by the manufacturer, its service agent or similarly qualified persons in order to avoid a hazard.
- Never use electrical appliances inside the refrigerator (e.g. heater, electric ice maker, etc.). Explosion hazard!
- Never use a steam cleaner to clean the appliance. The steam may penetrate electrical parts and cause a short circuit. Risk of electric shock!
- Do not store products which contain flammable propellants (e.g. spray cans) or explosive substances in the appliances. Explosion hazard!
- Do not stand or support yourself on the base, drawers or doors, etc.
- Before defrosting and cleaning the appliance, pull out the mains plug or switch off the fuse. Do not pull out the mains plug by tugging the cable.
- Commercially frozen pre-packed food should be stored in accordance with the frozen food manufacturers instruction.
- Bottles containing a high percentage of alcohol must be sealed and stored in an upright position.
- Keep plastic parts and the door seal free of oil and grease. Otherwise, the plastic and door seal will become porous.
- Never cover or block the ventilation openings for the appliance.
- Do not store bottled or canned drinks (especially carbonated drinks) in the ice compartment. Bottles and cans may explode!
- Never put frozen food, or ice cubes, straight from the ice compartment into your mouth. Risk of frost burns to the lips and tongue!
- Avoid prolonged touching of frozen food, ice or the inner freezer walls or tubing etc. Risk of frost burns to the skin.
- Do not scrape off frost or stuck frozen food with a knife or pointed object. You could damage the refrigerant tubing. Leaking refrigerant may ignite. Only use a plastic scraper.
- In the case of malfunction, under no circumstances should you attempt to repair the appliance yourself. Repairs carried out by inexperienced persons may cause injury or further malfunctioning to the appliance.
- When the appliance is unplugged please wait for 5 minutes before plugging it in again. Otherwise, the compressor will be overloaded.

- Do not use electrical appliances such as a hairdryer or heaters near your refrigerator.
- Do not store inflammable gases or liquids inside your refrigerator.

Children in the household

- Keep children away from the packaging and its parts. Danger of suffocation from folding cardboard and plastic film!
- Do not allow children to tamper with the controls or play with the appliance. It is not a toy. Under no circumstances should children be allowed to sit on the bins or hang from the door.
- If the appliance features a lock, keep the key out of the reach of children.

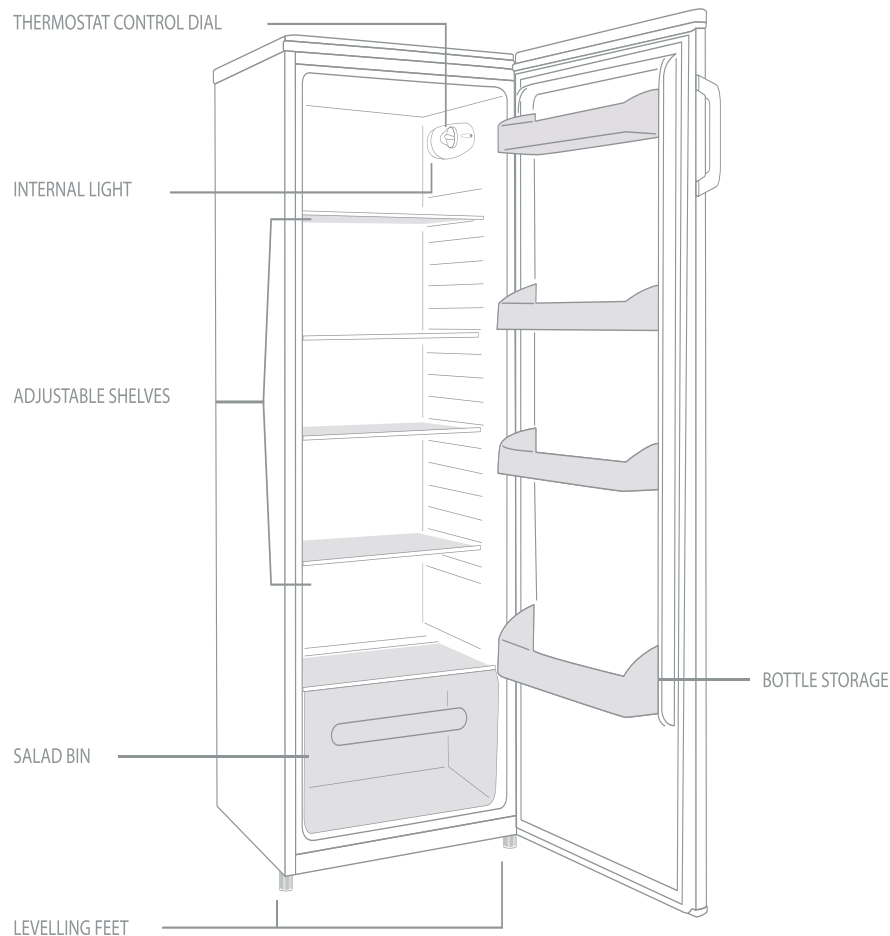
General requirements

- The appliance is designed for domestic use inside the home and is not intended for commercial or industrial use.
- The appliance must be used to store food products by adults only and according to the instruction manual.
- Try to avoid keeping the door open for long periods or opening the door too frequently in order to conserve energy.
- Do not fill the appliance with too much food: cold air must circulate freely for food to be preserved properly.

GETTING TO KNOW YOUR LARDER FRIDGE

Before use

Please read these instructions carefully before using your new Fridgemaster Larder Fridge. The Larder Fridge is for indoor and domestic use only. Please keep these instructions in a safe place for future reference.



INSTALLATION

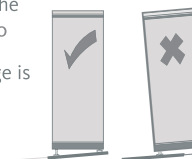
Location

When selecting a position for your Larder Fridge you should make sure the floor is flat and firm, and the room is well ventilated with an average room temperature of between 16°C and 38°C. Avoid locating your Larder Fridge near a heat source, eg. cooker, boiler or radiator. Also avoid direct sunlight. Never place the Larder Fridge in a wall recess or into fitted cabinets or furniture. It must be installed so that there is 10 cm of free space above and at each side and 7.5cm at the rear. Ensure there is sufficient clear space in front of the larder fridge to allow the door to open 160° can either open to the right or the left, depending on the location which suits you. See page 7 if you want to reverse the door swing. Do not drape the Larder Fridge with any covering.

Levelling the Larder Fridge

The Larder Fridge has two adjustable feet at the front and two castors at the back to assist with moving. Once the Larder Fridge is put in its final location

make sure it is level. Use the Levelling Feet at the front. If the Larder Fridge is not level, the doors and magnetic seal alignments will be affected.



Cleaning before use

Wipe the inside of the Larder Fridge with a weak solution of bicarbonate soda. Then rinse with warm water using a 'wrung-out' sponge or cloth. Wipe completely dry before replacing the shelves and baskets. You could clean the Larder Fridge externally with wax polish. If you require more information refer to Cleaning on page 8

Before plugging in YOU MUST

Check that you have a socket which is compatible with the plug supplied with the Larder Fridge. If not, see the section called ELECTRICAL CONNECTIONS on page 10.

Before switching on!

DO NOT SWITCH ON UNTIL FOUR HOURS AFTER MOVING THE LARDER FRIDGE.

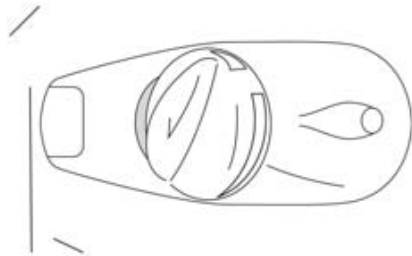
The coolant fluid needs time to settle

USING YOUR LARDER FRIDGE

Operating instructions

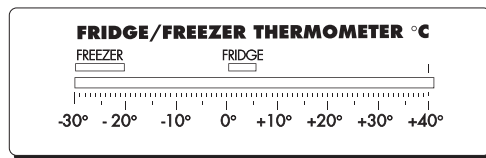
Adjusting the temperature

To change the internal temperature of the Larder Fridge use the control dial, located inside the fridge. The recommended setting at normal room temperature is 3. The Larder Fridge may not operate at the correct temperature if it is in a particularly hot or cold room or if you open the Larder Fridge doors very often.



Is the Larder Fridge cold enough?

If you are concerned that your Larder Fridge is not being kept cold enough, and wish to check the temperature, you will need a special fridge thermometer available from most supermarkets and hardware shops. Place the thermometer on the middle shelf of the fridge cabinet, where it can be read easily. Leave overnight, the temperature in the fridge should be between 2°C and 5°C. See 'Adjusting the temperature'.



Noises inside the Larder Fridge

If you have not owned a refrigerator before, you may notice that it makes some rather unusual noises. Most of these are perfectly normal, but you should be aware of them!

Gurgling, whooshing

These noises are caused by the circulation of the refrigerant liquid in the cooling system. It has become more pronounced since the introduction of CFC free gases. This is not a fault and will not affect the performance of your Larder Fridge.

Humming, purring or pulsating

This is the compressor motor working, as it pumps the refrigerant around the system.

When you store foods in the fridge

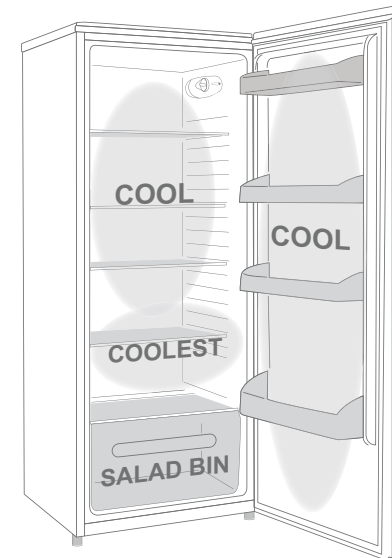
Cool area

This is where to store foods which will keep longer if they are kept cool. Milk, eggs, yogurt, fruit juices, hard cheeses, eg. cheddar. Opened jars and bottles of salad dressings, sauces and jams. Fats, eg. butter, margarine, low-fat spreads, cooking fats and lard.

Coldest area: 0°C to 5°C

This is where foods which must be cold to keep them safe should be kept:

- Raw and uncooked foods should always be wrapped.
- Pre-cooked chilled foods, eg. ready meals, meat pies, soft cheeses.
- Pre-cooked meats eg. ham.
- Prepared salads (including pre-washed chopped, pre-packed mixed green salads, rice, potato salad etc).
- Desserts, eg. fromage frais, home-prepared food and leftovers or cream cakes.



USING YOUR LARDER FRIDGE

Salad bin

This is the most humid part of the fridge.

Fruit, fresh salad items, eg. unwanted whole lettuce. Store vegetables whole tomatoes, radishes, etc here.

WE RECOMMEND THAT ALL PRODUCE KEPT IN THE SALAD BIN IS WRAPPED.

NOTE: ALWAYS WRAP AND STORE RAW MEAT, POULTRY AND FISH ON THE LOWEST SHELF AT THE BOTTOM OF THE FRIDGE. THIS WILL STOP THEM DRIPPING ONTO, OR TOUCHING OTHER FOODS.

DO NOT STORE FLAMMABLE GASES OR LIQUIDS IN THE FRIDGE.

Shopping for chilled foods

Don't buy in your lunch hour!

Unless you have a Larder Fridge at work to keep the food cold in the afternoon. Leaving food in your car or at room temperature for a prolonged period of time could raise food temperature to the level at which harmful bacteria grow.

Keep chilled foods together

When you are going around the supermarket and when you are travelling home, if you keep all the chilled foods together they will help to keep each other cold.

Use a cool bag

Special insulated bags can be bought from most supermarkets and hardware shops. These keep food cold for longer, but are only for getting chilled foods home, not storing it.

Unpack as soon as you get home

Always unpack and place chilled foods in the Larder Fridge before storing dry food-stuffs.

Tips for keeping food perfect in the Larder Fridge

Take extra care with meat and fish

Cooked meats should always be stored on a shelf above raw meats to avoid bacterial transfer. Keep raw meats on a plate which is large enough to collect juices and cover it with cling film or foil.

Leave space around food

This will allow cold air to circulate around the Larder Fridge.

Wrap up food

To prevent transfer of flavours and drying out, food should be separately packed or covered.

Let pre-cooked food cool properly

Always let pre-cooked food cool down before you put it in the Larder Fridge. This will stop the internal temperature of the Larder Fridge from rising.

Shut the door

To prevent cold air escaping, limit the number of times you open the door. When returning from shopping, sort foods to be kept in your Larder Fridge while the door is closed.

REVERSING THE DOOR SWING

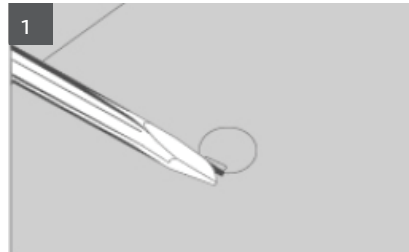
The door of your refrigerator can be reversed.

- . Ensure the fridge is unplugged and empty.
- . We recommend you have someone to assist you

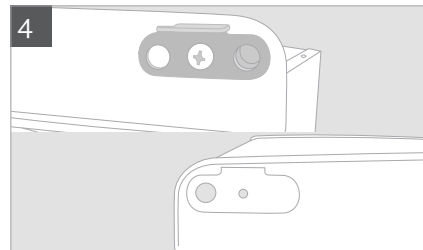
Tools required

- . Philips style screwdriver
- . Flat bladed screwdriver
- . 8mm socket
- . 10mm socket or spanner

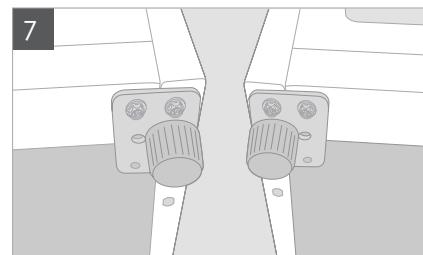
When trying to gain access to the base of the fridge, do not tip it back at more than a 45° angle. Rest the fridge on soft foam packaging or similar material to avoid damaging the back of the appliance



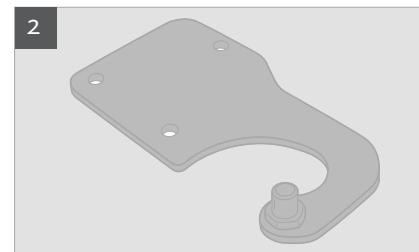
Remove the four blanking plates from the top of the fridge with a flat bladed screwdriver. Remove the screws underneath with a Phillips screwdriver.



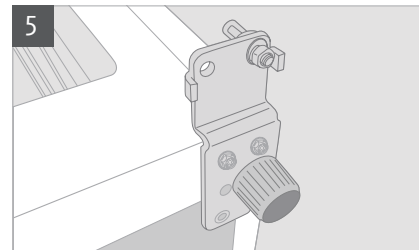
Remove the hinge insert plate from the bottom of fridge door. Replace the plate on the opposite side.



Place the fixing plate on the opposite side of the appliance, secure it with the three bolts, and screw the foot into position.



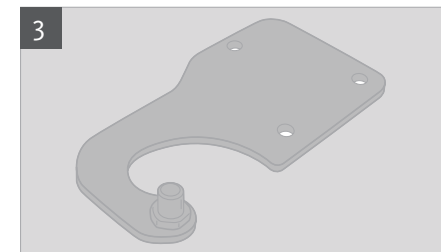
Use the 8mm socket or spanner to remove the three bolts above the door hinge. Lift off the bracket. Remove the fridge door.



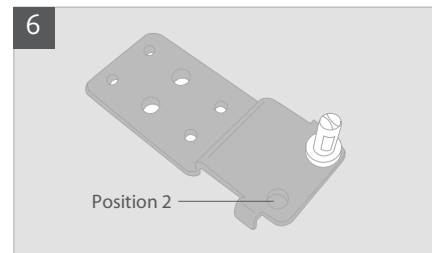
Tilt the fridge back, no more than 45°, to access the bottom hinge and feet. Remove the feet and the bolts securing the right hand hinge plate and the left hand fixing plate.

If the door seal does not fit against the cabinet, on any side, warm the seal with hot water and tease it into position. This can be done using a hair dryer but care must be taken not to overheat the seal or burn your hands.

Check the door is aligned horizontally and vertically and that the seal is closed on all sides before finally tightening hinge bolts. Replace the lid and screws.



Remove the pin from the bracket and replace it into the same hole from the other side.



Remove the hinge pin from position 1 and replace it in position 2. Place the hinge on the opposite side of the cabinet, secure it with the three bolts, and screw in the foot into position.



CLEANING

Cleaning inside the Larder Fridge

You should clean the Larder Fridge internally with a weak solution of bicarbonate of soda. Then rinse with warm water using a 'wrung-out' sponge or cloth. Wipe the Larder Fridge dry before replacing the food. Wash the baskets and shelves in warm soapy water. Ensure they are completely dry before replacing in the Larder Fridge. Plug in and switch on the mains supply

Cleaning the outside of the Larder Fridge

Use standard furniture polish to clean the Larder Fridge exterior. Make sure that the doors are closed, to prevent polish getting on the magnetic door seal or inside. The grille of the condenser at the back of the Larder Fridge and the adjacent components can be vacuumed using a soft brush attachment.

Cleaning tip

- Defrost and clean when food stocks are low.

MAINTENANCE

Moving your Larder Fridge

Location

Do not locate your Larder Fridge near a heat source, eg. cooker, boiler or radiator. Also avoid direct sunlight.

See 'Location' on page 4.

Levelling the Larder Fridge

Make sure the Larder Fridge is level. Use the rotating levelling feet at the front. If the Larder Fridge is not level, the doors and magnetic seal alignments will be affected. See 'Levelling the Larder Fridge' on page 4

Do not turn on the Larder Fridge for 4 hours

After the Larder Fridge is in place it needs to be left for 4 hours. The coolant fluid needs time to settle.

Installation

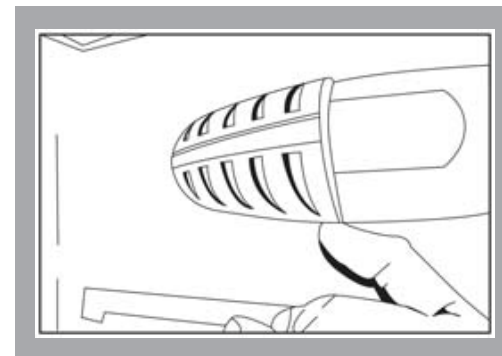
Don't cover or block the vents or grilles of your appliance.

Servicing

Repairs and maintenance of the appliance should only be performed by an authorised, qualified technician.

Changing the internal light

- 1 Before carrying out the bulb replacement always switch off the Larder Fridge and disconnect the electrical supply.
- 2 Push the level at the base of the light to the rear to release the light cover



- 3 Remove the old bulb by unscrewing it in an anti-clockwise direction
- 4 Replace with a new bulb (15W) by screwing it in a clockwise direction making sure that it is secure in the bulb holder
- 5 Replace the light cover back into position and click back into place.
- 6 Re-connect your Larder Fridge to the electrical supply and switch on.

TROUBLESHOOTING

The Larder Fridge is not working

Check it is plugged in and switched on. Check that the fuse in the plug has not blown. Plug in another appliance, such as a lamp, to see if the socket is working. The Larder Fridge should be placed in a well ventilated room with an ambient temperature of between 16°C and 38°C.

Condensation appears on the outside of the LarderFridge

This may be due to a change in the room temperature. Wipe off any residue of moisture. If the problem continues call the Customer Service Department.

Noises

You may hear some unusual noises from time to time. See 'Noises inside the Larder Fridge on page 5.

Tips

If the Larder Fridge won't be used for a long period of time switch it off, unplug and clean it. Leave the door open to prevent the formation of mildew and smell.

TECHNICAL SPECIFICATIONS

Model	MTL55250
Rated Voltage (V)	220-240
Rated Frequency (Hz)	50
Energy Class	A+
Gross Volume (Litres) (Cubic Feet)	255 9.0
Weight (Kg)	42
Product Dimension h/w/d (cm)	144 / 55.4 / 55.1
Sound Decibel Rating (dB[A])	43
The policy of Frigidaire is one of continuously seeking new ways of improving its products. Therefore the Company reserves the right to change the specification of items illustrated and described, at any time.	

MTL55300

220-240
50
A+
305 10.8
50.5
168.7 / 55.4 / 55.1
43

ELECTRICAL CONNECTIONS

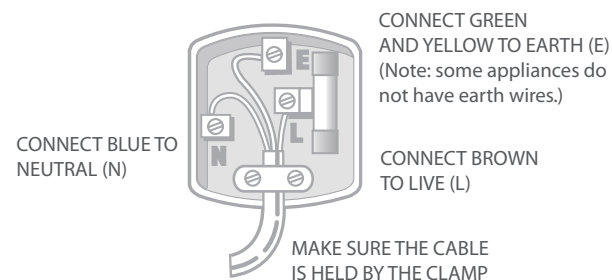
THIS APPLIANCE MUST BE EARTHED.

This appliance is fitted with a fused three pin plug to BS 1363 which will be suitable for use in all houses fitted with sockets to current specifications.

If the fitted plug is not suitable for your socket outlets, it should be cut off and carefully disposed of. To avoid a possible shock hazard, do not insert the discarded plug into a socket.

Fitting a new plug

If for any reason you need to fit a new plug, the flexible mains lead must be connected as shown here.



The wires in the mains lead fitted to this appliance are coloured in accordance with the following code:

If the colours of the wires in the mains lead of this appliance do not correspond with the coloured markings identifying the terminals in your plug, proceed as follows:

The wire which is coloured Green and Yellow MUST be connected to the terminal which is marked with the letter E (Earth) or symbol $\frac{1}{\text{E}}$ or coloured Green. The wire which is coloured Blue MUST be connected to the terminal which is marked with the letter N or coloured Black. The wire which is coloured Brown MUST be connected to the terminal which is marked with the letter L or coloured Red.

Before refitting the plug cover, check that there are no cut or stray strands of wire inside the plug.

Use a 13 Amp BS1362 fuse, only BSI or ASTA approved fuses should be used. If you are in any way unsure which plug or fuse to use, always refer to a qualified electrician.

Note: After replacing or changing a fuse on a moulded plug which has a fuse cover, the cover must be refitted to the plug, the appliance must not be used without a fuse cover. If lost, replacement fuse covers can be obtained from an electrical shop.

This appliance complies with the following EEC Directives: 73 / 23 EEC (Low Voltage Directive) 89 / 336 EEC (EMC Directive).



FRIDGEMASTER

Unit D, Global Avenue

Global Park Millshaw, Leeds LS11 8PR

Tel: +44(0) 113 395 6930

Fax: +44(0) 113 270 8599

For further information please contact
the Fridgemaster Technical Helpline on:
0845 0508536



This symbol on the product or in the instructions means that your electrical and electronic equipment should be disposed at the end of its life separately from your household waste. There are separate collection systems for recycling in the EU.

For more information, please contact the local authority or your retailer where you purchased the product.

