

Hisense

life reimagined

USER'S OPERATION MANUAL

Before operating this unit, please read this manual thoroughly, and retain for future reference

RB403N4ZS2	RB449N4ZS2
RB403N4AC2	RB468N4BC1
RB403N4DC1	RB468N4BW1

English

Contents

Safety and warning information.....	2	Using your appliance.....	17
Installing your new appliance.....	8	Helpful hints and tips.....	19
Description of the appliance.....	13	Cleaning and care.....	20
Display controls.....	15	Troubleshooting.....	21
		Disposal of the appliance.....	23



This appliance is in accordance with the following EU guidelines: 2006/95/EC and 2004/108/EC and 2009/125/EC and EC.643/2009 and 2002/96/EC



Safety and warning information

For your safety and correct usage, before installing and first using the appliance, read this user manual carefully, including its hints and warnings. To avoid unnecessary mistakes and accidents, it is important to make sure that all people using the appliance are thoroughly familiar with its operation and safety features. Save these instructions and be sure that they remain with the appliance if it is moved or sold, **so that anyone using it throughout its life, will be properly informed on its usage and safety notices.**

For the safety of life and property, keep the precautions of these user's instructions as the manufacturer is not responsible for damages caused by omission.

Safety for children and others who are vulnerable people

This appliance can be used by children aged from 8 years and above and persons with reduced physical, sensory or mental capabilities or lack of experience and knowledge if they have been given supervision or instruction concerning use of the appliance in a safe way and understand the hazards involved.

- Children shall not play with the appliance. Cleaning and user maintenance shall not be made by children without supervision.
- Keep all packaging away from children as there is risk of suffocation. If you are discarding the appliance, pull the plug out of the socket, cut the connection cable (as close to the appliance as you can) and remove the door to prevent children playing from suffering an electric shock or from closing themselves inside it. If this appliance, featuring a magnetic door seals, is to replace an older appliance having a spring lock (latch) on the door or lid, be sure to make the spring lock unusable before you discard the old appliance. This will prevent it from becoming a death trap for a child.

General safety



WARNING — This to be used in

household and similar applications such as

-staff kitchen areas in shops, offices and

other working environments;

-farm houses and by clients in hotels,

motels and other residential type environments;

-bed and breakfast type environments;

-catering and similar non-retail applications

WARNING — Do not store explosive

substances such as aerosol cans with a

flammable propellant in this appliance.

WARNING — If the supply cord is

damaged, it must be replaced by the

manufacturer, its service agent or

similarly qualified persons in order to

avoid a hazard.

WARNING — Keep ventilation openings, in the appliance enclosure or in the built-in structure, clear of obstruction.

WARNING — Do not use mechanical devices or other means to accelerate the defrosting process, other than those recommended by the manufacturer.

WARNING — Do not damage the refrigerant circuit.

WARNING — Do not use electrical appliances inside the food storage compartments of the appliance, unless they are of the type recommended by the manufacturer.

WARNING — The refrigerant and insulation blowing gas are flammable. When disposing of the appliance, do so only at an authorized waste disposal centre. Do not expose to flame.

Refrigerant

The refrigerant isobutene (R600a) is contained within the refrigerant circuit of the appliance, a natural gas with a high level of environmental compatibility, which is nevertheless flammable. During transportation and installation of the appliance, ensure that none of the components of the refrigerant circuit becomes damaged. The refrigerant (R600a) is flammable.



Caution: risk of fire

If the refrigerant circuit should be damaged:

- Avoid opening flames and sources of ignition.
- Thoroughly ventilate the room in which the appliance is situated.

It is dangerous to alter the specifications or modify this product in any way.

Any damage to the cord may cause a shortcircuit, fire, and/or electric shock.



Electrical safety

1. The power cord must not be lengthened.
2. Make sure that the power plug is not crushed or damaged. A crushed or damaged power plug may overheat and cause a fire.
3. Make sure that you can access the main plug of the appliance.
4. Do not pull the main cable.
5. If the power plug socket is loose, do not insert the power plug. There is a risk of electric shock or fire.
6. You must not operate the appliance without the interior lighting lamp cover.
7. The fridge is only applied with power supply of single phase alternating current of 220~240V/50Hz.

If fluctuation of voltage in the district of user is so large that the voltage exceeds the above scope, for safety sake, be sure to apply A.C. Automatic voltage regulator of more than 350W to the fridge.

The fridge must employ a special power socket instead of common one with other electric appliances. Its plug must match the socket with ground wire.

- Do not store flammable gass or liquids in the appliance, There is a risk of an explosion.
- Do not operate any electrical appliances in the appliance (e.g. electric ice cream makers, mixers etc.). When unplugging always pull the plug from the mains socket, do not pull on the cable.
- Do not place hot items near the plastic components of this appliance.

-
- Do not place food products directly against the air outlet on the rear wall. Store pre-packed frozen food in accordance with the frozen food manufacture's instructions. The appliances manufactures storage recommendations should be strictly adhered to. Refer to relevant instructions for storage.
 - Do not place carbonated **or** fizzy drinks in the freeze compartment as it creates pressure on the container, which may cause it to explode, resulting in damage to the appliance. Frozen food can cause frost burns if consumed straight from the freezer compartment.
 - Do not place the appliance in direct sunlight. Keep burning candles, lamps and other items with naked flames away from the appliance so that do not set the appliance on fire.
 - The appliance is intended for keeping food stuff and/or beverages in normal household as explained in this instruction booklet The appliance is heavy. Care should be taken when moving it.
 - Do not remove nor touch items from the freezer compartment if your hands are damp/wet, as this could cause skin abrasions or frost/freezer burns.
 - **Never use the base, drawers, doors etc. to stand on or as supports.**
 - **Frozen food must not be refrozen once it has been thawed out.**
-

- Do not consume ice popsicles or ice cubes straight from the freezer as this can cause freezer burn to the mouth and lips.
- To avoid items falling and causing injury or damage to the appliance, do not overload the door racks or put too much food in the crisper drawers.

caution!

Care and cleaning

Before maintenance, switch off the appliance and disconnect the mains plug from the mains socket.

- Do not clean the appliance with metal objects, steam cleaner, ethereal oils, organic solvents or abrasive cleansers.
- Do not use sharp objects to remove frost from the appliance. Use a plastic scraper.

Installation Important!

For electrical connection carefully, follow the instructions given in this manual.

Unpack the appliance and check if there are damages on it. Do not connect the appliance if it is damaged. Report possible damages immediately to the place you bought it. In this case retain packing. It is advisable to wait at least four hours before connecting the appliance to allow the oil to flow back in the compressor. Adequate air circulation should be around the appliance, lacking this leads to overheating. To achieve sufficient ventilation, follow the instructions relevant to installation.

Wherever possible the back of the product should not be too close to a wall to avoid touching or catching warm parts (compressor,

condenser) to prevent the risk of a fire, follow the instructions relevant to installation.

The appliance must not be located close to radiators or cookers. Make sure that the mains plug is accessible after the installation of the appliance.

Service

Any electrical work required to do the servicing of the appliance should be carried out by qualified electrician or competent person. This product must be serviced by an authorized Service Center, and only genuine

Installing your new appliance

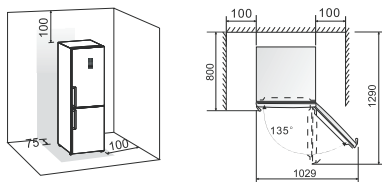
Before using the appliance for the first time, you should be informed of the following tips.

Ventilation of appliance



In order to improve efficiency of the cooling system and save energy, it is necessary to maintain good ventilation around the appliance for the dissipation of heat. For this reason, sufficient clear space should be available around the refrigerator. Suggest :It is advisable for there to be at least 75mm of space from the back to the wall, at least 100mm from its

top, at least 100mm from its side to the wall and a clear space in front to allow the doors to open 135°. As shown in following diagrams.



Note:

- This appliance performs well within the climate class showed in the table below.

It may not work properly if being left at a temperature above or below the indicated range for a long period.

Climate class	Ambient temperature
SN	+10°C to +32°C
N	+16°C to +32°C
ST	+16°C to +38°C
T	+16°C to +43°C

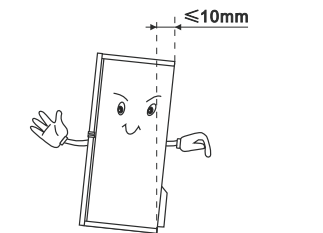
● Stand your appliance in a dry place to avoid high moisture.

● Keep the appliance out of direct sunlight, rain or frost. Stand the appliance away from heat sources such as stoves, fires or heaters.

Leveling of appliance

● For sufficient leveling and air circulating in the lower rear section of the appliance, the bottom feet may need to be adjusted. You can adjust them manually by hand or by using a suitable spanner.

● To allow the doors to self-close, tilt the top backwards by about 10mm.

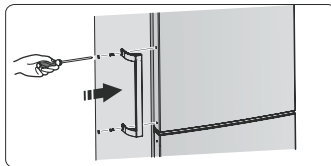


Installing the door handles

For the convenience of transportation, the door handles are separately provided in a plastic bag, you can install the door handles as follows.

1. Lever screw covers on the left side of the door, and then put them back to the plastic bag.

2. Match the handle on the left side of the door, keeping axes of screw holes in the handle and the door in a line, as the picture shows.



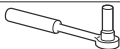
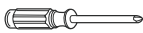
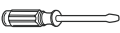

3. Fix the handle with the special screws provided in the plastic bag. And then install the handle covers.

Reversing the door

The side at which the door opens can be changed, from the right side (as supplied) to the left side, if the installation site requires.

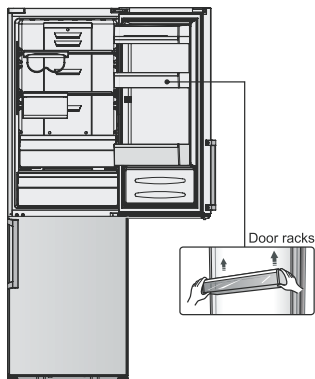
Warning! When reversing the door, the appliance must not be connected to the mains. Ensure that the plug is removed from the mains socket..

Tools you will need

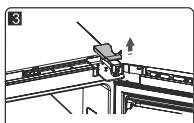
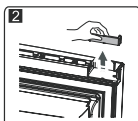
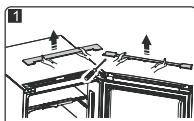
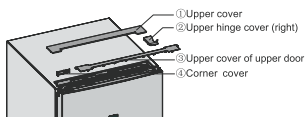
	
8mm socket wrench	Cross-shaped screwdriver
	
Thin-blade screwdriver	8mm wrench

Note: Before you start lay the refrigerator on its back in order to gain access to the base, you should rest it on soft foam packaging or similar material to avoid damaging the backboard of the refrigerator. To reverse the door, the following steps are generally recommended.

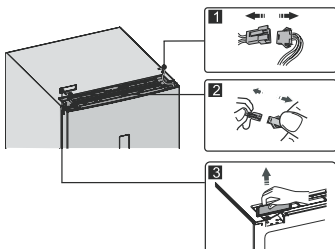
1. Stand the refrigerator upright. Open the upper door to take out all door racks (to avoid racks damaged) and then close the door.



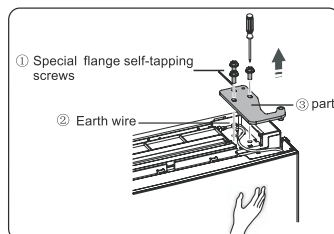
2. Open part ① on top of the refrigerator body from right side and then take down part ③ and part ④ on the upper door in the same way. Take down part ② and put it back to the plastic bag.



3. Disconnect electrical connector ① as well as electrical connector ② and then take down part ③.

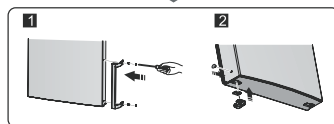
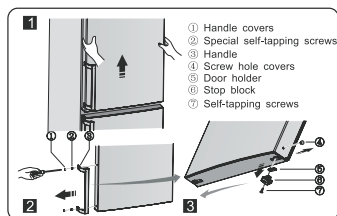


4. Remove the screws ①, loose wire ②, and remove part ③.



Note: Please hold the upper door by hand during step 4 to prevent door dropping.

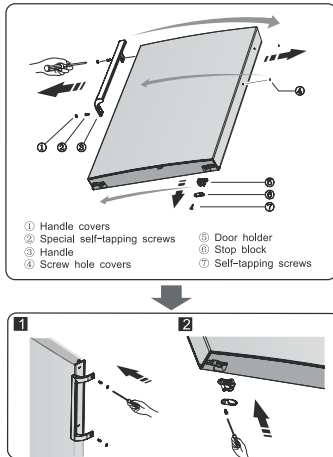
5. Remove the upper door and place it on a smooth surface with its panel upwards. Lever part ① and part ④, then loose screws ②, as shown in the picture. Change handle ③ to the right side, then install screws ②, part ① and part ④ in turn. Loose screws ⑦, detach part ⑥ and part ⑤ then install part ⑤ and another part ⑥ (in the plastic bag) to the left side with screws ⑦. Put part ⑥ just detached back to plastic bag.



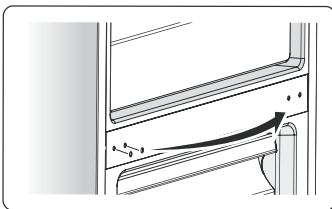
6. Loose screws used to fix the middle hinge and remove middle hinge. Then remove the lower door.



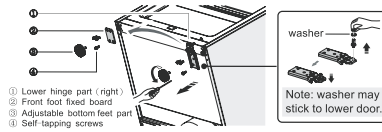
7. Place the lower door on a smooth surface with its panel upwards. Change the handle to the right side according to step 5. Loose screws⑦, detach part⑥ and part⑤. Turn part⑤ by 180° and then install part⑤ and part⑥ to corresponding position on left side together with screws⑦.



8. Change screw hole covers on middle cover plate from left to right (as shown in figure below).

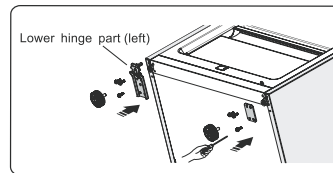


9. Place refrigerator flatwise, remove part③ and then loose screws④. Remove part ② and part①.

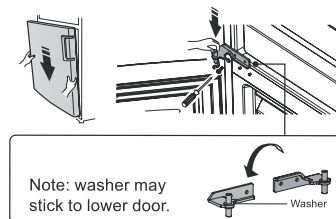


10. Screw out lower hinge, change it to the near hole site, and then screw up and mount washer.

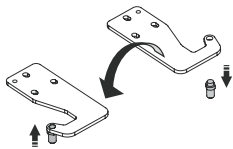
11. Just remount to the step 9, change part① to left and part② to right and then fix them with screws④. Finally install part③.



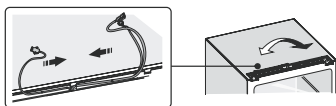
12. Move the lower door and adjust its position to align lower hole site and upper hinge axis. Turn the middle hinge by 180, change the washer on the axis to the upper side, adjust the middle hinge to the appropriate position and then install it.



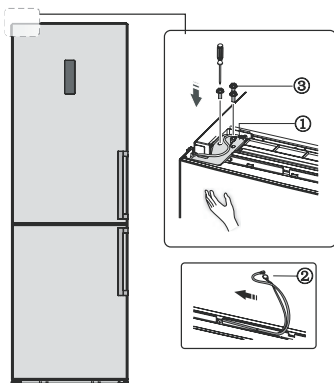
13. Screw out The upper hinge axis, turn the upper hinge over and fix axis on it. Then place it at side for use.



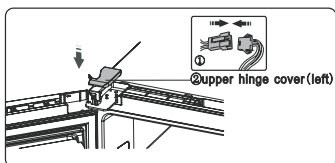
14. Exchange wires both in the left and right slots of refrigerator body.



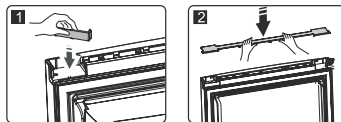
15. Move the upper door to appropriate position, adjust part① and upper door, Move the connecting wire② in the slot of upper door from right to left, and then fix part① and wire② by screws③. (Please hold upper door by hand when installing)



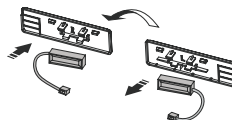
16. Connect electrical connector① in accordance with step 3 and then install part② (which is in the plastic bag).



17. Reverse part① by 180° and install it onto the right corner of upper door, then mount part②. (both of which are taken down in step 2)



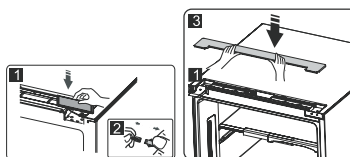
18. Take the reed switch out of the coping block(part③ 6 in step 3) and mount it on another block for use (which is with mark "R" in the plastic bag). Put the coping block just removed back to the plastic bag.



Note:

Be sure character side of reed switch fits well with coping block.

19. Install part ①, connect the wire connector②, and then install part③.

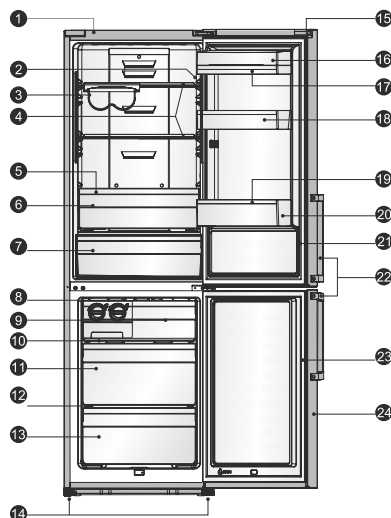


20. Open the upper door, mount door racks and then close it.

Description of the appliance

1. Cabinet
2. LED light
3. Flexible wine rack
4. Glass shelf
5. Crisper cover
6. Fruit and vegetables crisper
7. My fresh choice
8. Twist ice maker
9. Upper freezer drawer
10. Upper freezer glass shelf
11. Middle freezer drawer(huge box)
12. Middle freezer glass shelf
13. Lower freezer drawer
14. Adjustable bottom feet
15. Fridge door
16. Covered dairy rack
17. Egg tray
18. Middle rack
19. Bottle holder
20. Bottle rack
21. Fridge door seal
22. Handle
23. Freezer door seal
24. Freezer door

View 1 of the appliance

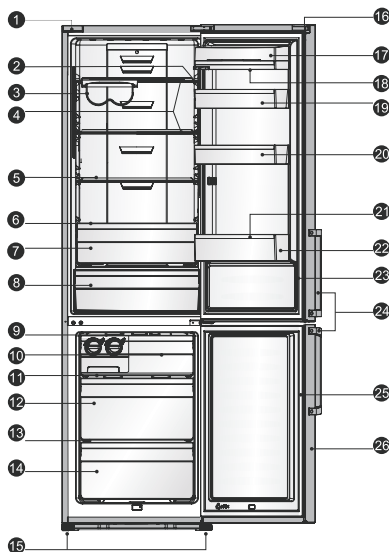


Optional part list

Part \ Model	RB403N4ZS2	RB403N4AC2	RB403N4DC1
Top LED light	X	X	✓
Twin LED light	✓	✓	X
Flexible wine rack	✓	X	X
Wine rack	X	✓	✓
My fresh choice	✓	X	X
Moisture 0 cool	X	✓	X
Moisture fresh crisper	X	X	✓
Twist ice maker	✓	X	X
Integrative ice maker	X	✓	✓
Upper freezer glass shelf	✓	✓	✓
Middle freezer glass shelf	✓	✓	✓
Covered dairy rack	✓	✓	✓
Handle	✓	✓	✓

1. Cabinet
2. LED light
3. Flexible wine rack
4. Glass shelf
5. Folded shelf
6. Crisper cover
7. Fruit and vegetables crisper
8. My fresh choice
9. Twist ice maker
10. Upper freezer drawer
11. Upper freezer glass shelf
12. Middle freezer drawer(huge box)
13. Middle freezer glass shelf
14. Lower freezer drawer
15. Adjustable bottom feet
16. Fridge door
17. Covered dairy rack
18. Egg tray
19. Middle rack
20. Bottle holder
21. Bottle rack
22. Fridge door seal
23. Handle
24. Installation bracket
25. Freezer door seal
26. Freezer door

View 2 of the appliance



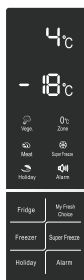
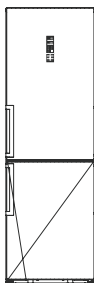
Optional part list

Part \ Model	RB449N4ZS2	RB468N4BC1	RB468N4BW1
Top LED light	X	✓	✓
Twin LED light	✓	X	X
Flexible wine rack	✓	X	X
Wine rack	X	✓	✓
Folded shelf	✓	X	X
My fresh choice	✓	X	X
Moisture 0 cool	X	✓	✓
Twist ice maker	✓	X	X
Integrative ice maker	X	✓	✓
Upper freezer drawer	✓	✓	✓
Upper freezer glass shelf	✓	✓	✓
Middle freezer glass shelf	✓	✓	✓
Covered dairy rack	✓	✓	✓
Handle	✓	✓	✓

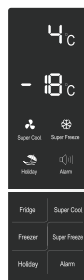
Note: Due to unceasing modification of our products, your refrigerator may be slightly different from this instruction manual, but its functions and using methods remain the same. To get more space in the freezer, you can remove drawers (except lower freezer drawer), installation bracket and integrative ice maker/twistable ice tray.

Display controls

Use your appliance according to the following control regulations, your appliance has the corresponding functions and modes as the control panels showed in the pictures below. When the appliance is powered on for the first time, the backlighting of the icons on display panel starts working. If no buttons have been pressed and the doors are closed, the backlighting will turn off.



RB403N4ZS2
RB449N4ZS2



RB403N4AG2
RB403N4DC1
RB468N4BC1
RB468N4BW1



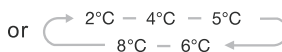
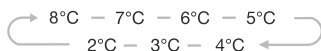
Controlling the temperature

We recommend that when you start your refrigerator for the first time, the temperature for the refrigerator is set to 4°C and the freezer to -18°C. If you want to change the temperature, follow the instructions below.

Caution! When you set a temperature, you set an average temperature for the whole refrigerator cabinet. Temperatures inside each compartment may vary from the temperature values displayed on the panel, depending on how much food you store and where you place them. Ambient temperature may also affect the actual temperature inside the appliance.

1. Fridge

Press "Fridge" to set fridge temperature between 2°C and 8°C as needed, and control panel will display corresponding values according to the following sequence.




2. My fresh choice

There are three modes for my fresh choice function. You can select different modes according to your requirements by pressing the button "My fresh choice" on the control panel, and the corresponding icon will be illuminated.



Vege. ()

- When vege. Mode is selected, the light will be illuminated and the My Fresh Choice compartment will be set at 3°C.

Zero zone. ()

- When Zero zone Mode is selected, the light will be illuminated and the My Fresh Choice compartment will be set at 0°C.

Meat ()

- When meat Mode is selected, the

light will be illuminated and the My Fresh Choice compartment will be set at -2°C.

3. Super Cool

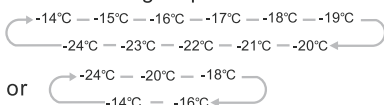


Super Cool can refrigerate your food much faster, keeping food fresh for a longer period

- Press "Super Cool" button to activate this function. The light will be illuminated.
- Super cool automatically switches off after 6 hours and the refrigerator temperature setting displays 2°C.
- When super cool function is on you can switch it off by pressing "Super Cool" or "Refrigerator" button and the refrigerator temperature setting will revert back to the previous setting.

4. Freezer

Press "Freezer" to set freezer temperature between -14°C and -24°C as needed, and the control panel will display corresponding value according to the following sequence.



5. Super Freeze



Super Freeze will quickly lower the temperature within the freezer so food will freeze vitamins and

nutrients of fresh food and keep food fresh longer.

- Press "Super Freeze" button to activate the super freeze function. The light will come on.
- In case of the maximum amount of food to be frozen, please wait about 24 h.
- Super freeze automatically switches off after 26 hours and the freezer temperature setting displays -24°C.
- When super freeze function is on you can switch off super freeze function by pressing "Super Freeze" or "Freezer"

button and the freezer temperature setting will revert back to the previous setting.

6. Holiday



If you are going to be away for a long period of time, you can activate this function by pressing "Holiday" button for 3 seconds until the light comes on.

- When the holiday function is activated, the temperature of the refrigerator is automatically switched to 15°C to minimize the energy consumption.

Important! Do not store any food in the fridge during this time.

- When the holiday function is on, you can switch it off by pressing any button of "Holiday", "Fridge" and "Super Cool" button. The fridge temperature setting will revert back to the previous setting.

7. Alarm

In case of alarm, "Alarm" icon will be on and there will be buzzing sound. Press "Alarm" key to clear alarm and then "Alarm" icon will turn off and stop buzzing.

Door Alarm

- When the door of fridge or freezer is open for over 2 minutes, the door alarm will sound. In case of door alarm, buzzer will sound 3 times every 1 min and will stop alarming automatically after 10 minutes.

- To save energy, please avoid keeping the door open for a long time when using the appliance. The door alarm can also be cleared by closing the fridge door.

Temperature alarm

- If freezer temperature is too high due to power failure or other reasons, there will be a temperature alarm and the freezer temperature setting displays "--" or **nothing**.

- In case of temperature alarm, buzzer will sound constantly for 10 times and then stop automatically.

- In case of temperature alarm, press "Alarm" button for 3 seconds to check the highest freezer temperature. The temperature value and "Alarm" icon will simultaneously flash for 5 seconds. This function may not be available

according to the model.

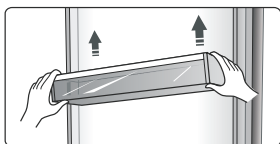
Caution! When power is restored, it is normal that the temperature alarm appears, this can be cleared by pressing "Alarm".

Using your appliance

Your appliance has the accessories as the "Description of the appliance" showed in general, with this part instruction you can have the right way to use them.

Door rack

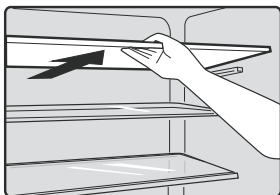
- It is suitable for the storage of eggs, canned liquid, bottled drinks and packed food, etc. Do not place too many heavy things in the racks
- The middle door shelf can be placed at different heights according to your requirements. Please take food out of the shelf before lifting vertically to reposition.



Note: There are egg trays in the upper shelf and bottle holder in the lower shelf.

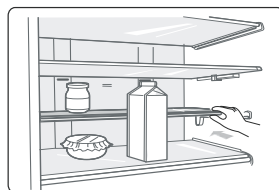
Shelf in Refrigerator chamber

- There are shelves in refrigerator chamber, and they can be taken out to be cleaned.



Folded shelf

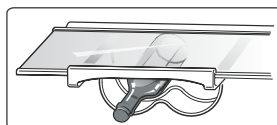
- It is made up of fixed part and flexible part.
- It can be adjusted and folded to achieve different storage volume as you need. See the picture below:



Note : If you want to spread out the folded shelf, please press the outer verge of the flexible part first.

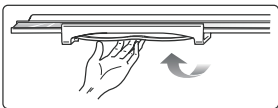
Bottle rack

It is for storing bottled wine or drinks. It can also slide along the shelf if required.



Note: Please use gentle pressure on left or right side face to move the Bottle rack along the shelf.

- Wine rack can be folded up to save space.



- If required, it can also be taken out with its hanger allowing you to adjust the shelf at different heights and save space.

Crisper cover

- It is for controlling the temperature of the crisper and avoiding the vegetable losing moisture.

Crisper of refrigerator chamber

- It is suitable for the storage of fruits and vegetable.

My fresh choice

- The temperature there can be set at -2°C, 0°C and 3°C to meet customers' demand.

- It can store various kinds of food including cheese, meat, fish, fruits, vegetables and other perishable food under proper temperature.

Note: Bottled or canned drinks are not allowed to be stored there.

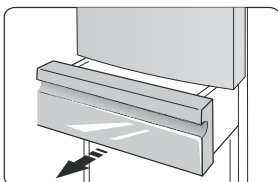
Moisture 0 Cool

- The temperature there is about 2-3°C lower than that in the refrigerator chamber.

- It is used to store fish, meat and other erodible food.

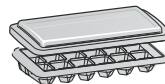
Note: When selecting the Super Freeze function, ensure there is no bottled or canned liquid which could explode caused by volume expanding. Freezer Drawer

- It is used to store food which needs to be frozen, including meat, fish, ice cream, etc.



Integrative ice maker

- It is used for making ice.
- It is a removable accessory which can be taken out to save space. There is an ice maker cover to keep the ice maker clean.



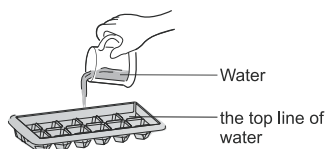
Note: If the ice maker is used for the first time or has not been used for a long time, please clean it before using.

- Ice-making process.

1. Place the integrative ice maker on level and take down the cover.



2. Pour water into the ice tray and Pour water into the ice trays and the water level shall not exceed the top line as the follow picture shows.



3. Place the ice maker in its original position. **After the cubes are formed, gently twist the tray to separate the cubes and trays.**

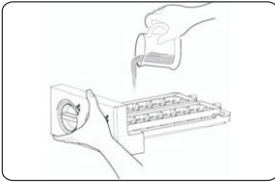


Twistable ice tray (Not in all models)

Note: If the ice tray is used for the first time or has not been used for a long time, please clean it before using.

● The twist ice tray is used to make and deposit ice cubes. You should use it as follows.

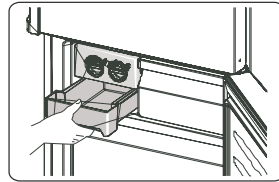
1. Pull out the twistable ice tray from the installation bracket.
2. Pour water into the ice trays and the water level shall not exceed the maximum line.



3. Place the filled ice tray back to the bracket.

4. When ice cubes form, twist the knobs clockwise and the ice will drop into the ice box below.

5. Ice cubes can be stored in the ice box, if you need them, you can pull out the ice box and take them out.



Helpful hints and tips

Energy saving tips

We recommend that you follow the tips below to save energy.

- Try to avoid keeping the door open for long periods in order to conserve energy.
- Ensure the appliance is away from any sources of heat (Direct sunlight, electric oven or cooker etc)
- Don't set the temperature colder than necessary.
- Don't store warm food or evaporating liquid in the appliance.
- Place the appliance in a well ventilated, humidity free, room. Please refer to Installing your new appliance chapter.
- If the diagram shows the correct combination for the drawers, crisper and shelves, do not adjust the combination as this is designed to be the most energy efficient configuration.

Hints for fresh food refrigeration

- Do not place hot food directly into the

refrigerator or freezer, the internal temperature will increase resulting in the compressor having to work harder and will consume more energy.

- Do cover or wrap the food, particularly if it has a strong flavor.
- Place food properly so that air can circulate freely around it.

Hints for refrigeration

- Meat (All Types) Wrap in polythene food: wrap and place on the glass shelf above the vegetable drawer. Always follow food storage times and use by dates suggested by manufacturers.

- Cooked food, cold dishes, etc.:

They should be covered and may be placed on any shelf.

- Fruit and vegetables:

They should be stored in the special drawer provided.

- Butter and cheese:

Should be wrapped in airtight foil or plastic film wrap.

film wrap.

- **Milk bottles:**

Should have a lid and be stored in the door racks.

Hints for freezing

- When first starting-up or after a period out of use, let the appliance run at least 2 hours on the higher settings before putting food in the compartment.

- Prepare food in small portions to enable it to be rapidly and completely frozen and to make it possible to subsequently thaw only the quantity required.

- Wrap up the food in aluminum foil or polyethylene food wraps which are airtight,

- Do not allow fresh, unfrozen food to touch the food which is already frozen to avoid temperature rise of the latter.

- Iced products, if consumed immediately after removal from the freezer compartment, will probably

cause frost burns to the skin.

- It is recommended to label and date each frozen package in order to keep track of the storage time.

Hints for the storage of frozen food

- Ensure that frozen food has been stored correctly by the food retailer

- Once defrosted, food will deteriorate rapidly and should not be re-frozen. Do not exceed the storage period indicated by the food manufacturer.

Switching off your appliance

If the appliance needs to be switched off for an extended period, the following steps should be taken prevent mould on the appliance.

1. Remove all food.
2. Remove the power plug from the mains socket.
3. Clean and dry the interior thoroughly.
4. Ensure that all the doors are wedged open slightly to allow air to circulate.

Cleaning and care

For hygienic reasons the appliance (including exterior and interior accessories) should be cleaned regularly at least every two months.

Caution! The appliance must not be connected to the mains during cleaning. Danger of electrical shock! Before cleaning switch the appliance off and remove the plug from the mains socket.

Exterior cleaning

To maintain good appearance of your appliance, you should clean it regularly.

- Wipe the digital panel and display panel with a clean, soft cloth.

- Spray water onto the cleaning cloth instead of spraying directly on the surface of the appliance. This helps ensure an even distribution of moisture to the surface.

- Clean the doors, handles and cabinet

surfaces with a mild detergent and then wiped dry with a soft cloth.

Caution!

- Don't use sharp objects as they are likely to scratch the surface.

- Don't use Thinner, Car detergent, Clorox, ethereal oil, abrasive cleansers or organic solvent such as Benzene for cleaning. They may damage the surface of the appliance and may cause fire.

Interior cleaning

You should clean the appliance interior regularly. It will be easier to clean when food stocks are low. Wipe the inside of the fridge freezer with a weak solution of bicarbonate of soda, and then rinse with warm water using a wrung-out sponge or cloth. Wipe completely dry before replacing the shelves and baskets.

Thoroughly dry all surfaces and removable parts.

Although this appliance automatically defrosts, a layer of frost may occur on the freezer compartment's interior walls if the freezer door is opened frequently or kept open too long. If the frost is too thick, choose a time when the supply of food stocks are low and proceed as follows:

1. Remove existing food and accessories baskets, unplug the appliance from the mains power and leave the doors open. Ventilate the room thoroughly to accelerate the thawing process.

2. When defrosting is completed, clean your freezer as described above.

Caution! Don't use sharp objects to remove frost from the freezer compartment. Only after the interior is completely dry should the appliance be switched back on and plugged back into the mains socket.

Door seals cleaning

Take care to keep door seals clean. Sticky food and drinks can cause seals to stick to the cabinet and tear when you open the door. Wash seal with a mild detergent and warm water. Rinse and dry it thoroughly after cleaning.

Caution! Only after the door seals are completely dry should the appliance be powered on.

Replacing the LED light:

Warning: The LED light must not be replaced by the user! If the LED light is damaged, contact the customer helpline for assistance. To replace the LED light, the below steps can be followed:

1. Unplug your appliance.
2. Remove light cover by pushing up and out.
3. Hold the LED cover with one hand and pull it with the other hand while pressing the connector latch.
4. Replace LED light and snap it correctly in place.

Troubleshooting

If you experience a problem with your appliance or are concerned that the appliance is not functioning correctly, you can carry out some easy checks before calling for service, please see below. You can carry out some easy checks according to this section before calling for service.

Warning! Don't try to repair the appliance yourself. If the problem persists after you have made the checks mentioned below, contact a qualified electrician, authorized service engineer or the shop where you purchased the product.

Problem	Possible cause & Solution
Appliance is not working correctly	Check whether the power cord is plugged into the power outlet properly.
	Check the fuse or circuit of your power supply, replace if necessary.
	The ambient temperature is too low. Try setting the chamber temperature to a colder level to solve this problem.
	It is normal that the freezer is not operating during the automatic defrost cycle, or for a short time after the appliance is switched on to protect the compressor.
Odours from the compartments	The interior may need to be cleaned
	Some food, containers or wrapping cause odours.
Noise from the appliance	The sounds below are quite normal: <ul style="list-style-type: none"> ●Compressor running noises. ●Air movement noise from the small fan motor in the freezer compartment or other compartments. ●Gurgling sound similar to water boiling. ●Popping noise during automatic defrosting. ●Clicking noise before the compressor starts.
	Other unusual noises are due to the reasons below and may need you to check and take action: The cabinet is not level. The back of appliance touches the wall. Bottles or containers fallen or rolling.
The motor runs continuously	It is normal to frequently hear the sound of the motor, it will need to run more when in following circumstances: <ul style="list-style-type: none"> ● Temperature setting is set colder than necessary ● Large quantity of warm food has recently been stored within the appliance. ●The temperature outside the appliance is too high. ●Doors are kept open too long or too often. ●After your installing the appliance or it has been switched off for a long time.
A layer of frost occurs in the compartment	Check that the air outlets are not blocked by food and ensure food is placed within the appliance to allow sufficient ventilation. Ensure that door is fully closed. To remove the frost, please refer to cleaning and care chapter.
Temperature inside is too warm	You may have left the doors open too long or too frequently; or the doors are kept open by some obstacle; or the appliance is located with insufficient clearance at the sides, back and top
Temperature inside is too cold	Increase the temperature by following the "Display controls" chapter.
Doors cant be closed easily	Check whether the top of the refrigerator is tilted back by 10-15mm to allow the doors to self close, or if something inside

	is preventing the doors from closing.
Water drips on the floor	The water pan (located at the rear bottom of the cabinet) may not be properly leveled, or the draining spout (located underneath the top of the compressor depot) may not be properly positioned to direct water into this pan, or the water spout is blocked. You may need to pull the refrigerator away from the wall to check the pan and spout.
The light is not working	<ul style="list-style-type: none"> ●The LED light may be damaged. Refer to replace LED lights in cleaning and care chapter. ●The control system has disabled the lights due to the door being kept open too long, close and reopens the door to reactivate the lights.

Disposal of the appliance

It is prohibited to dispose of this appliance as household waste.


Packaging materials

Packaging materials with the recycle symbol are recyclable. Dispose of the packaging into a suitable waste collection container to recycle it.

Before disposal of the appliance

1. Pull out the mains plug from the mains socket.
2. Cut off the power cord and discard with the mains plug

Warning! Refrigerators contain refrigerant and gases in the insulation. Refrigerant and gases must be disposed of professionally as they may cause eye injuries or ignition. Ensure that tubing of the refrigerant circuit is not damage prior to proper disposal.

	Correct Disposal of this product
	<p>This marking indicates that this product should not be disposed with other household wastes throughout the EU. To prevent possible harm to the environment or human health from uncontrolled waste disposal, recycle it responsibly to promote the sustainable reuse of material resources. To return your used device, please use the return and collection systems or contact the retailer where the product was purchased. They can take this product for environmental safe recycling.</p>

Hisense Service Help Line: 0844 3460087

Hisense

life reimagined

Hisense UK Ltd

Unit D, Global Avenue

Millshaw

Leeds

LS11 8PR

Tel: +44 (0) 113 395 6930

Fax: +44 (0) 113 270 8599