



BOSCH

Sensixx'x DA50

Operating instructions

Index		Page
	General safety instructions	4
1	Before using your appliance for the first time	6
2	Using the appliance	6
3	Filling the water tank	6
4	Ironing without steam	6
5	Ironing with steam	7
6	Spray	7
7	Shot of steam	7
8	Vertical steam	7
9	Multiple descaling system	7
10	"secure" auto shut-off function	8
11	Drip protection	8
12	Fabric-protection soleplate cover	9
13	After ironing	9
14	Cleaning	10
15	Tips to help you save energy	10
16	Disposal	10
17	Guarantee conditions	10
18	Trouble shooting	11

Thank you for buying the DA50 steam iron from Bosch.

Please visit www.bosch-home.co.uk for more product information or to register your product, just follow the link to the Online guarantee registration.

This iron has been designed according to ecological criteria, related to the sustainable development, analyzing its whole lifecycle –from material selection to its later reusing or recycling– evaluating the improvement possibilities, from a technical, economical and environmental point of view.

We hope that you enjoy ironing with this iron.

Important!

Carefully read through the operating instructions for the appliance and keep them safe for future reference.

Open out the first page of the booklet, this will help you to understand how the appliance works.

This appliance complies with international safety standards.


This appliance has been designed exclusively for domestic use and must not be used for industrial purposes.

This appliance must be used only for the purposes for which it was designed, i.e. as an iron. Any other use will be considered improper and consequently dangerous. The manufacturer will not be held responsible for any damage arising from misuse or improper use.

General safety instructions

- The iron must not be left unattended while it is connected to the supply mains.
- Remove the plug from the socket before filling the appliance with water or before pouring out the remaining water after use.
- The appliance must be used and placed on a stable surface.
- When placed on its stand, make sure that the surface on which the stand is placed is stable.
- The iron should not be used if it has been dropped, if there are visible signs of damage or if it is leaking water. It must be checked by an authorized Technical Service Centre before it can be used again.
- With the aim of avoiding dangerous situations, any work or repair that the appliance may need, e.g. replacing a faulty mains cable, must only be carried out by qualified personnel from an Authorised Technical Service Centre.
- This appliance can be used by children aged from 8 years and above and persons with reduced physical, sensory or

mental capabilities or lack of experience and knowledge if they have been given supervision or instruction concerning use of the appliance in a safe way and understand the hazards involved. Children shall not play with the appliance. Cleaning and user maintenance shall not be made by children without supervision.


- Keep the iron and its cord out of reach of children less than 8 years of age when it is energized or cooling down.
-  **CAUTION.** Hot surface.
Surface is liable to get hot during use.

- This appliance is to be connected and used in accordance with the information stated on its characteristics plate.
- This appliance must be connected to an earthed socket. If it is absolutely necessary to use an extension cable, make sure that it is suitable for 16A and has a socket with an earth connection.
- If the safety fuse fitted in the appliance blows, the appliance will be rendered inoperative. To restore normal operation the appliance will have to be taken to an authorised Technical Service Centre.
- In order to avoid that, under unfavourable mains conditions, phenomena like transient voltage drops or lighting fluctuations can happen, it is recommended that the iron is connected to a power supply system with a maximum impedance of 0.27Ω . If necessary, the user can ask the public power supply company for the system impedance at the interface point.
- The appliance must never be placed directly under the tap to fill the water tank.
- Unplug the appliance from the mains supply after each use, or if a fault is suspected.
- The electrical plug must not be removed from the socket by pulling the cable.
- Never immerse the iron in water or any other fluid.
- Do not leave the appliance exposed to weather conditions (rain, sun, frost, etc.).

1

Before using your appliance for the first time

Remove any label or protective cover from the soleplate.

Fill the tank of the iron with tap water and set the temperature control to "max". Plug in the appliance to the mains. When the steam iron has reached the desired temperature, let the water create steam by setting the steam control to "max" and by repeatedly pressing the button .

During its first use the iron may produce certain vapours and odours that will die away after a few minutes.

2

Using the appliance



The pilot light switches on while the appliance is heating up and switches off as soon as the set temperature is reached. If the temperature of the hot iron drops, you can continue ironing while the iron heats up again to the set temperature.


Sort laundry according to the fabric care labels and start at the lowest temperature "•":

- Synthetics
- Silk – Wool
- Cotton

max Linen

3

Filling the water tank

1 Set the steam regulator to the  position and unplug the iron from the mains!

Use only clean water from the tap without mixing anything with it. The addition of other liquids, such as perfume, will damage the appliance.

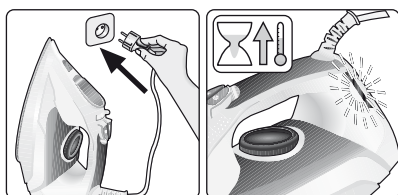
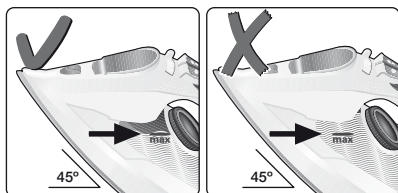
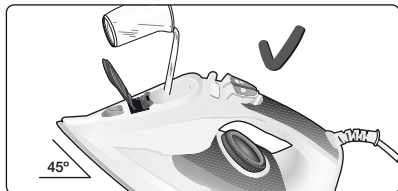
Any damage caused by the use of the aforementioned products, will make the guarantee void.

Do not use condensation water from tumble dryers, air conditionings or similar.

This appliance has been designed to use normal tap water.

To prolong the optimum steam function, mix tap water with distilled water 1:1. If the tap water in your district is very hard, mix tap water with distilled water 1:2.


Never fill beyond the "max" water level mark.

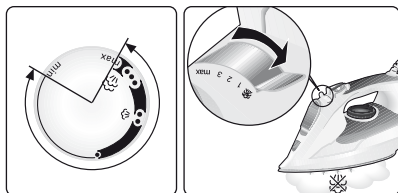


4

Ironing without steam



Set steam control to the  position.



5 Ironing with steam



Temperature setting

Recommended steam regulator setting

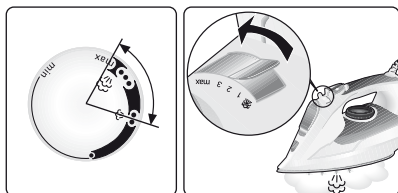
••

1 or 2 / eco*

••• to "max"

1 to "max"

* model dependent



Tip: for better ironing results, iron the last strokes without steam to dry the garment.

6 Spray




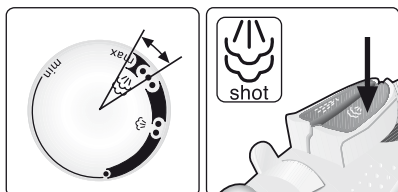
Do not use the spray function with silk.



7 Shot of steam




- Set temperature to "max".
- Press button  repeatedly with intervals of at least 5 seconds.

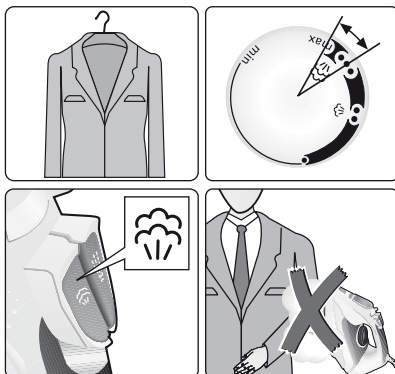


8 Vertical steam



⚠ Never direct the steam jet at garments that are being worn. Never aim the steam at people or animals.

- Set temperature to "max".
- Hang article of clothing on a clothes hanger.
- Operate the iron in a vertical position at a distance of 10 cm / 4 in, and press the  button repeatedly with pauses of at least 5 seconds.

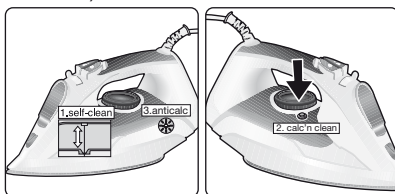


9 Multiple descaling system



AntiCalc

Depending on the model, this range is equipped with the "AntiCalc" (=component 1 + 2 + 3).



1. self-clean

Each time you use the steam regulator, the "self-clean" system cleans the mechanism of scale deposits.

2. Calc'n clean

The "calc'n clean" function helps to remove scale particles out of the steam chamber. Use this function approximately

every 2 weeks, if the water in your area is very hard.

1. Unplug the iron from the mains socket, set the steam regulator to the ~~XX~~ position and fill the water tank with water.
2. Set the temperature selector to the "max" position and plug in the iron.
3. After the necessary warm-up period, the lamp goes out. Then, unplug the iron (**very important!**).
4. Hold the iron over a sink. Press the "clean" button and shake the iron until approximately one third of the water capacity of the tank is evaporated. Boiling water and steam will come out, carrying scale or deposits that might be there.
5. Release the "clean" button, and gently shake the iron for some seconds,
6. Repeat the steps 4 and 5 three times until the tank is empty. Then plug the iron in and heat it up again until the remaining water has evaporated.
7. Unplug the iron and let the soleplate cool down. Wipe the soleplate with a damp cotton cloth only.

3. anti-calc

The "anti-calc" cartridge has been designed to reduce the build-up of scale produced during steam ironing, helping to extend the useful life of your iron. Nevertheless the "anti-calc" cartridge cannot remove all of the scale that is produced naturally over time.

4. Calc'n clean with descaling liquid

For deep descaling, it is recommended to use the descaling liquid especially developed by Bosch.

This procedure should be carried out every 3 months.

- Fill the water tank with tap water mixed with a measure (25 ml) of the descaling fluid.
- Then follow the procedure described above in section "Calc'n clean" (steps 2 to 7)

The descaling liquid can be obtained from our after-sales service or specialist shops :

Accessory code
(After-sales)

311144

Name of accessory
(specialist shops)

TDZ1101

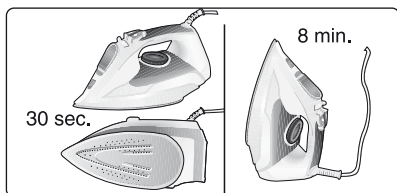
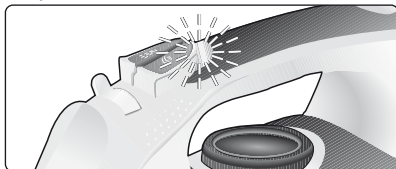
10

"secure" auto shut-off function



(Model dependent)

The "secure" auto shut-off function switches off the iron when it is left unattended, thus increasing security and saving energy. After plugging in the appliance, this function will be inactive for the first two minutes in order to give the appliance time to reach the set temperature.



After such time, if the iron is not moved for 8 minutes while in the upright position or 30 seconds while resting on its soleplate or on its side, then the safety circuit will switch the appliance off automatically and the pilot light will start flashing.

To reconnect the iron, just move it about gently.

11

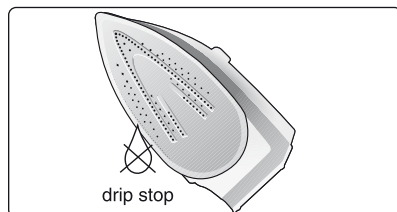
Drip protection



(Model dependent)

If the temperature is set too low, the steam is automatically switched off to avoid dripping.

There may be an audible click when this occurs.



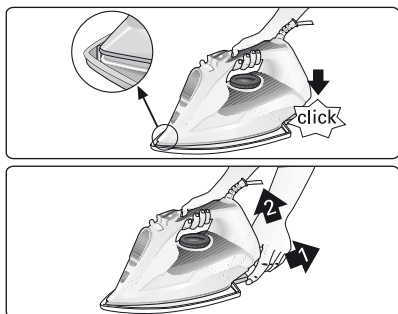
**(Model dependent)**

The fabric-protection is used for steam-ironing delicate garments at maximum temperature without damaging them.

Use of the protector also does away with the need for a cloth to prevent shine on dark materials.

It is advisable to first iron a small section on the inside of the garment to see if it is suitable.

To attach the fabric protector to the iron, place the tip of the iron into the end of the fabric protector and press the rear of the protector upward until you hear a click. To release the fabric protector, pull down on the clip at the rear and remove the iron.



The fabric-protection soleplate cover may be purchased from the customer service or specialist shops:

Accessory code
(After-sales)

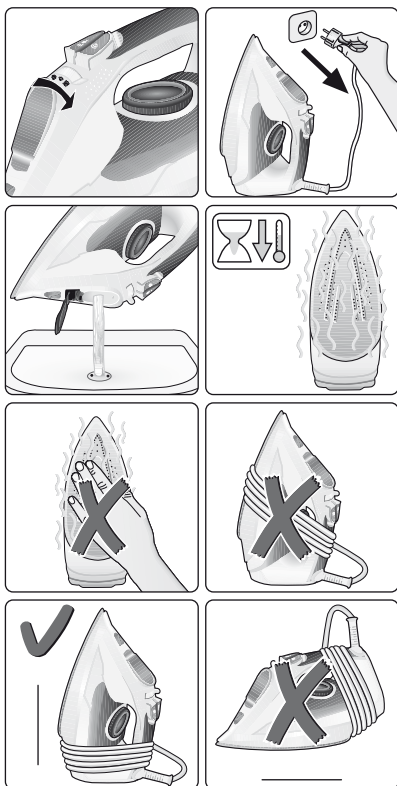
575494

Name of accessory
(Specialist outlets)

TDZ1550



- Switch the steam control from ~~XX~~ to "max" and back again several times (self-cleaning).
- Empty the tank.
- Hold the iron with the point down and shake lightly.
- Store standing on the rear, not on the base.
- Do not wrap the power cord too tight!

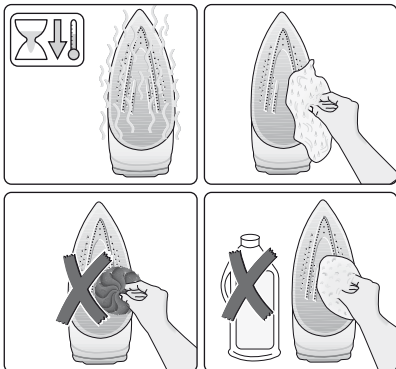


14 Cleaning



⚠ Attention ! Risk of burns !

Always unplug the appliance from the mains supply before carrying out any cleaning or maintenance operation on it.



- If the iron is only slightly soiled, pull out the plug and allow the soleplate to cool down. Wipe the housing and the soleplate with a damp cotton cloth only.
- If the cloth is synthetic, it may melt due to the high temperature on the soleplate, switch off the steam and rub off any residue immediately with a thickly folded, dry cotton cloth.
- To keep the soleplate smooth, you should avoid hard contact with metal objects. Never use a scouring pad, or chemicals to clean the soleplate.
- Never decalcify the tank or treat it with detergents or solvents, otherwise the iron will drip water whilst steaming.

15 Tips to help you save energy



Steam production consumes the most energy. To help minimise the energy used, follow the advice below:

- Start by ironing the fabrics that require the lowest ironing temperature. Check the recommended ironing temperature in the label on the garment.
- Regulate the steam according to the selected ironing temperature, following the instructions in this manual.

- Only use steam if necessary. If possible, use the spray function instead.
- Try to iron the fabrics while they are still damp and reduce the steam setting. Steam will be generated from the fabrics rather than the iron. If you tumble dry your fabrics before ironing them, set the tumble drier on the 'iron dry' programme.
- If the fabrics are damp enough, turn off the steam regulator completely.
- Stand the iron upright during pauses. Resting it horizontally with the steam regulator on generates wasted steam.

16 Disposal

Our goods come in optimised packaging. This basically consists in using non-contaminating materials which should be handed over to the local waste disposal service as secondary raw materials. Your local town council can give you information about how to dispose of obsolete appliances.



This appliance is labelled in accordance with European Directive 2012/19/EU concerning used electrical and electronic appliances (waste electrical and electronic equipment – WEEE).

The guideline determines the framework for the return and recycling of used appliances as applicable throughout the EU.

17 Guarantee conditions

The terms of the guarantee for this appliance are in accordance with that stated by our representative for the country in which it is sold.

The details of these conditions can be obtained from the retailer from whom the appliance was purchased. The purchase receipt must be presented when making any claims against the terms of this guarantee.

18 Trouble shooting

Problem	Probable cause	Solution
The iron does not heat up.	<ol style="list-style-type: none"> 1. Temperature control set to minimum. 2. No mains supply. 3. The "secure" system has been activated. The iron is set to stand-by. 	<ol style="list-style-type: none"> 1. Turn to a higher position. 2. Check with another appliance or plug the iron into a different socket. 3. To reconnect the iron, just move it about gently.
"Auto off" indicator lamp flashes.	<ol style="list-style-type: none"> 1. The "secure" system has been activated. The iron is set to stand-by. 	<ol style="list-style-type: none"> 1. To reconnect the iron, just move it about gently.
The clothes tend to stick.	<ol style="list-style-type: none"> 1. The temperature is too high. 	<ol style="list-style-type: none"> 1. Turn the temperature control down and wait until the iron has cooled down.
Water drips out of the soleplate together with steam.	<ol style="list-style-type: none"> 1. Temperature control setting is too low. 2. Steam control is set too high in conjunction with a low temperature. 3. You have pressed the shot of steam button repeatedly without waiting for 5 seconds between each press. 4. Pure distilled water has been used (see "Filling the water tank" section) or other products such as fragrant water have been added to the tank. 	<ol style="list-style-type: none"> 1. Turn the temperature control to a higher setting (between "••" and "max") and wait until the indicator lamp goes out. 2. Set the steam control to a lower setting. 3. Wait 5 seconds between each press of the jet of steam button. 4. Mix distilled water with tap water as directed in the "Filling the water tank" section and never add any other products to the water tank (unless recommended by Bosch).
Steam does not come out.	<ol style="list-style-type: none"> 1. Steam control is set to XX position. 2. No water in the tank. 3. The temperature is too low. Anti-drip system is activated. 	<ol style="list-style-type: none"> 1. Set the steam control to a higher position. 2. Fill the tank. 3. Set to a higher temperature if compatible with the fabric.
Spray does not work.	<ol style="list-style-type: none"> 1. No water in the tank. 2. Obstructed mechanism. 	<ol style="list-style-type: none"> 1. Fill the water tank. 2. Contact the Technical Service.
Smoke comes out when connecting the iron for the first time.	<ol style="list-style-type: none"> 1. This may be caused by the lubrication of some of the internal parts. 	<ol style="list-style-type: none"> 1. This is normal and will stop after a few minutes.
Deposits come out through the holes in the soleplate	<ol style="list-style-type: none"> 1. Traces of lime scale are coming out of the steam chamber. 	<ol style="list-style-type: none"> 1. Carry out a cleaning cycle (see "Calc'n clean" section).

If none of the above solves the problem, get in touch with an authorised technical service.

You can download this manual from the local homepages of Bosch.



BOSCH

Customer Service

Great Britain

Bosch Customer Service
Grand Union House
Old Wolverton Road
Milton Keynes
MK12 5PT
UK +44 (0)844 892 8979
IRL +353 (0)1450 2655
www.bosch-home.co.uk