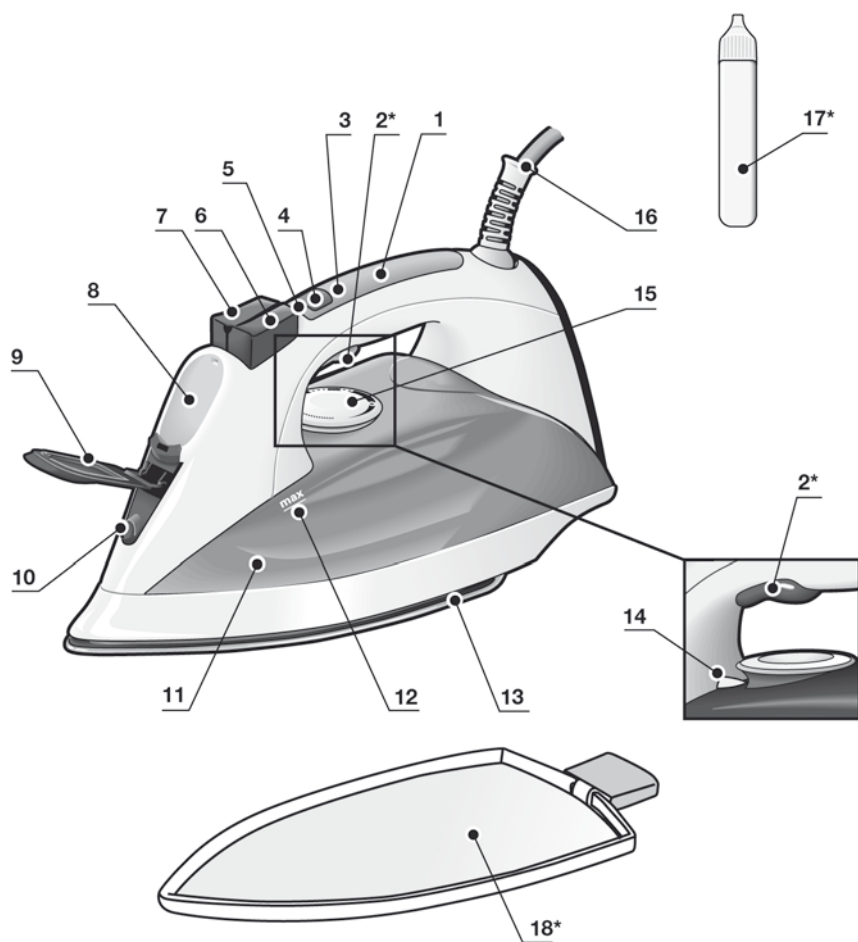


# TDS12.. SensorSteam

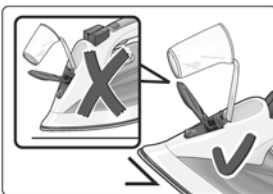
Operating instructions



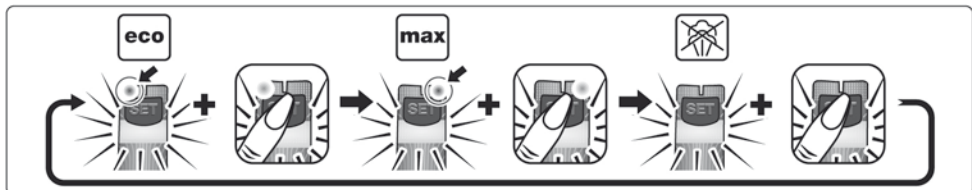
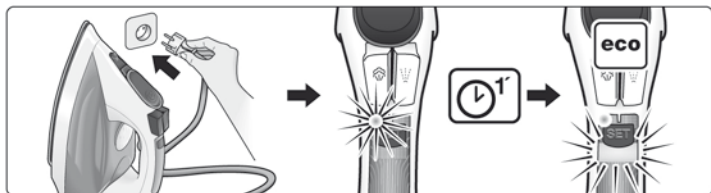
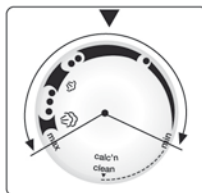
**BOSCH**



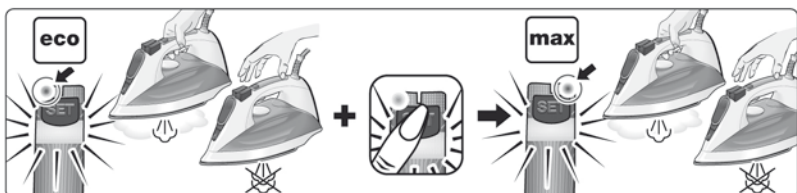
\* Model dependent



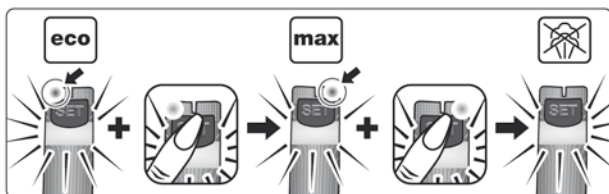
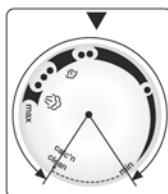
3



4



5



6



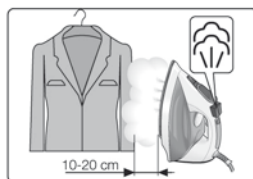
7



shot



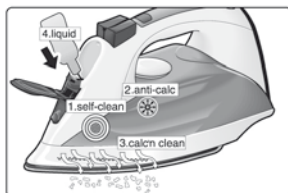
8



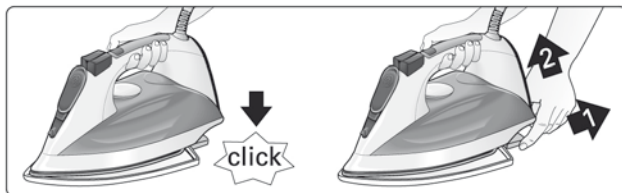
9



AntiCalc



10



11



12



## Index

Index	5
Description	7
Before using the iron for the first time	7
Filling the water tank	8
Setting the temperature	8
Setting the steam amount	8
SensorSteam	8
Ironing with steam	9
Ironing without steam	9
Spray	9
Shot of steam	9
Vertical steam	10
Multiple descaling system	10
Anti-drip system	10
Fabric protection soleplate cover	11
Cleaning & Maintenance	11
Storing the appliance	11
Tips to help you save energy	11
Advice on disposal	11
Guarantee conditions	11
Trouble shooting	12

Thank you for buying the TDS12 steam iron from Bosch.

This iron is a compact steam generator. The water is pumped into the steam chamber with pressure via a special pump. The steam amount when ironing is higher than in conventional irons, therefore the steaming performance is far more effective.

Please visit [www.bosch-home.co.uk](http://www.bosch-home.co.uk) for more product information or to register your product, just follow the link to the Online guarantee registration.

## Introduction

This powerful system produces continuous steam for an ideal ironing performance. It has a large water tank that can be refilled at any time without switching off the system.

We hope that you enjoy ironing with this steam station.


## Important

Please read these instructions for use carefully before using the appliance and save them for future reference.

This appliance complies with international safety standards.

**This appliance has been designed exclusively for domestic use and must not be used for industrial purposes.**

## General safety instructions

- The iron must not be left unattended while it is connected to the supply mains.
- Remove the plug from the socket before filling the appliance with water or before pouring out the remaining water after use.
- The appliance must be used and placed on a stable surface.
- When placed on its stand, make sure that the surface on which the stand is placed is stable.
- The iron should not be used if it has been dropped, if there are visible signs of damage or if it is leaking water. It must be checked by an authorized Technical Service Centre before it can be used again.
- With the aim of avoiding dangerous situations, any work or repair that the appliance may need, e.g. replacing a faulty mains cable, must only be carried out by qualified personnel from an Authorised Technical Service Centre.
- This appliance can be used by children aged from 8 years and above and persons with reduced physical, sensory or mental capabilities or lack of experience and knowledge if they have been given supervision or instruction concerning use of the appliance in a safe way and understand the hazards involved. Children shall not play with the appliance. Cleaning and user maintenance shall not be made by children without supervision.
- Keep the iron and its cord out of reach of children less than 8 years of age when it is energized or cooling down.
-  **CAUTION. Hot surface.**  
Surface is liable to get hot during use.

- This appliance is to be connected and used in accordance with the information stated on its characteristics plate.
- This appliance must be connected to an earthed socket. If it is absolutely necessary to use an extension cable, make sure that it is suitable for 16A and has a socket with an earth connection.
- If the safety fuse fitted in the appliance blows, the appliance will be rendered inoperative. To restore normal operation the appliance will have to be taken to an authorised Technical Service Centre.
- In order to avoid that, under unfavourable mains conditions, phenomena like transient voltage drops or lighting fluctuations can happen, it is recommended that the iron is connected to a power supply system with a maximum impedance of 0.27Ω . If necessary, the user can ask the public power supply company for the system impedance at the interface point.
- The appliance must never be placed directly under the tap to fill the water tank.
- Unplug the appliance from the mains supply after each use, or if a fault is suspected.
- The electrical plug must not be removed from the socket by pulling the cable.
- Never immerse the iron in water or any other fluid.
- Do not leave the appliance exposed to weather conditions (rain, sun, frost, etc.)

## Description

1. Handle with contact sensor
2. Steam activation button\*
3. ActiveControl Advanced indicator lamp. (clear light)
4. Steam setting selection button
5. Steam setting indicator lamps  
green = eco  
red = max
6. Shot of steam button
7. Spray button
8. Water inlet
9. Water inlet lid
10. Spray nozzle
11. Water tank
12. Level mark for maximum filling
13. Soleplate
14. Temperature index
15. Temperature control
16. Power cable
17. Descaling fluid\*
18. Fabric-protection soleplate cover\*

**\* Model dependent**

## Before using the iron for the first time

### **Remove any labels or protective covering from the soleplate (13)**

For further details on the following actions, please refer to the related chapters in this user manual.

- With the iron unplugged, fill the tank (11) of the iron with tap water and set the temperature control (15) to "max".
- Plug in the appliance to the mains.
- When the iron has reached the desired temperature, the green light (5) stops flashing and the clear light (3) starts flashing. Grip the handle (1) and set the steam control to the maximum position "max" (see "setting the steam amount" section).
- Hold the iron horizontally and repeatedly press the shot of steam button (6). Some residue may come out of the soleplate (13).
- If necessary, carefully clean the soleplate (13) down with a dry, folded cotton cloth.
- When using the steam function for the first time, do not use it on your laundry, as there may still be dirt in the steam dispenser.
- When turned on for the first time, your new iron may smell and emit a little smoke and a few particles; this will stop after a few minutes.

## 1 Filling the water tank

### Unplug the iron from the mains!

- Open the water inlet lid (9).
- **Never fill beyond the level mark for maximum filling (12).**
- Use only clean water from the tap without mixing anything with it. The addition of other liquids, (unless recommended by Bosch) such as perfume, will damage the appliance.

**Any damage caused by the use of the aforementioned products will make the guarantee void.**

- Do not use condensation water from tumble dryers, air conditioning systems or similar. This appliance has been designed to use normal tap water.
- To prolong the optimum steam function, you may mix tap water with distilled water 1:1. If the tap water in your district is very hard, mix tap water with distilled water 1:2.  
You can inquire about the water hardness with your local water supplier.

## 2 Setting the temperature



**The temperature control (15) adjusts the temperature of the soleplate (13).**





- Check the temperature instructions shown on the care label of the garment you are ironing.
- Set the temperature control (15) to the corresponding position by lining it up with the temperature index (14) on the iron:

- |     |                |
|-----|----------------|
| •   | Synthetics     |
| ••  | Silk – Wool    |
| ••• | Cotton – Linen |

- Sort your garments based on their care labels, always starting with clothes that have to be ironed at the lowest temperature.
- If you are unsure what type of material the garment is made from, start ironing on the lowest temperature setting and increase accordingly. If the garment is made from mixed fabrics, set the temperature for the most delicate material.
- For silk, woollen or synthetic materials iron the reverse side of the fabric to prevent shiny patches. Avoid using the spray function to prevent stains.

## 3 Setting the steam amount

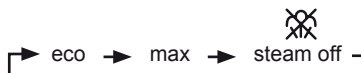
Your iron is equipped with a steam setting selection button (4) and indicator lamps (5) showing the steam setting, according to the table below:

Steam setting	eco	max	 steam off
Indicator lamps			
	Green	Red	Off

Steam can be generated by gripping the handle (1), or by pressing the steam activation button (2\*).

If the “eco” steam mode is selected, the energy consumption of the appliance will be reduced by means of reduction of electricity and water consumption. A good ironing result can be obtained on this setting for most garments.

The steam setting can be changed by pressing the steam setting selection button (4). The iron runs through the following cycle:



## SensorSteam


The “SensorSteam” function automatically switches off the iron when the handle is no longer gripped, thus increasing safety and energy saving.

**When plugging the iron in, during the first minute:**

- The soleplate (13) heats up to the temperature corresponding to the selected setting.
- The steam generation is blocked.
- The green lamp (5) flashes.

**After the initial 1 minute period:**

- “eco” setting is automatically selected.
- The green lamp (5) stops flashing.
- The “ActiveControl Advanced” indicator lamp (3) (clear light) goes on and starts flashing.

**From this moment on, when the handle (1) of the iron is gripped or if the steam activation button (2\*) is pressed at  steam setting:**

- The “ActiveControl Advanced” indicator lamp (3) stops flashing.



- The pump starts working and steam is generated automatically.

**If the handle (1) is released:**

- Steam generation will stop.
- The “ActiveControl Advanced” indicator lamp (3) will flash
- The iron shuts off automatically. If the handle is gripped again, the iron turns on.

**If the iron remains plugged in and is not used for several minutes:**

- After the handle (1) is touched or the steam activation button (2\*) is pushed again, the green light starts flashing.
- Steam generation will not be possible for several seconds, until the appropriate working temperature has been reached.

## 4 Ironing with steam



The steam control is used to adjust the amount of steam produced when ironing (see “setting the steam amount” section).

Steam can be generated in two ways:

**1. Continuous steam generation:**

- Grip the handle (1).
- Set the steam control to “eco” or “max” position.

**2. Steam on demand\*:**

(only on models equipped with steam activation button).

- Set the steam control to the “” position, to cancel continuous steam generation while gripping the handle (1). On this setting, steam can only be produced when manually pressing the steam activation button (2\*) under the handle.
- Press the steam activation button (2\*).

**Important:**

- Steam is only available if the temperature control (15) is set at the steam symbols - between “••” and “max”.
- Adjust the temperature setting and then set the steam control according to the table below. Steam will automatically be produced:

Temperature control (15) setting	Steam setting
••	eco
••• to “max”	max

Note: Once a steam ironing setting has been chosen using the temperature control (15), steam generation may be delayed for several seconds until the appropriate working temperature has been reached.

## 5 Ironing without steam



**This enables the iron to be used for dry ironing.**

- Grip the handle (1) and set the steam control to the setting.
- The temperature control (15) adjusts the temperature of the soleplate (13). Set it to the corresponding position by lining it up with the temperature index (14) on the iron.  
Select an appropriate temperature for the type of material being ironed (see “setting the temperature” section).
- While ironing, do not press the steam activation button (2\*).

## 6 Spray

**This can be used to remove stubborn wrinkles.**

- Do not use the spray function with silk as staining may occur.
- When ironing, press the spray button (7) and water will spray out of the spray nozzle (10) onto the garment.

## 7 Shot of steam



**This can be used to remove stubborn wrinkles or to press in a sharp crease or pleat. It cannot be used on a synthetic setting for delicate items.**

- Set the temperature control (15) to the “•••” or “max” position.
- Set the steam control to the “max” position.
- Press the shot of steam button (6) on the handle repeatedly at intervals of 5 seconds.

## 8 Vertical steam



This can be used to remove creases from hanging clothes, curtains etc.

### Warning!

**Do not iron clothing while it is being worn! Never spray or aim the steam at persons or animals!**

1. Set the temperature control (15) to the “...” or “max” position.
2. **Models with steam activation button (2\*):**
  - Grip the handle (1) and set the steam control (4) to the “max” position.
  - Or set the steam control to the position and press the steam activation button (2\*).
- Models without steam activation button (2\*):**
  - Grip the handle (1) and set the steam control (4) to the “max” position.
3. Hold the iron in an upright position about 15 cm away from the garment being steamed. The shot of steam button (6) on the handle may be additionally pressed at intervals of 5 seconds. However, after 4 shots of steam, wait for 10 seconds to allow for continued steam production.

- c) Fill the water tank (11) to the maximum level with clean tap water.
- d) Plug in the iron and select the maximum steam setting “max” by pressing the steam selection button (4).
- e) Hold the iron over a sink or a container to collect the water.
- f) Grip the handle (1) until the water tank (11) is empty. This could take several minutes.
- g) Repeat the procedure until particles no longer come out of the soleplate (13) of the iron.
- h) Turn the temperature control (15) to the maximum setting. The iron will begin to emit steam. Wait until the water inside the iron has evaporated.
- i) Clean the soleplate (13) of the iron.
- 4. calc’n clean with descaling fluid** (model dependent)

For deep descaling, use the descaling fluid (17\*) supplied.

This should be carried out every 3 months.

The descaling fluid (17\*) can be obtained from our After-sales service or from our website.

Accessory code (After-sales)	Name of accessory (Online shop)
311144	TDZ1101

Follow the procedure described below:

- a) Remove the plug from the socket, ensure that the iron has cooled down and that the water tank (11) is empty.
- b) Set the temperature control (15) to the “calc’n clean” setting.
- c) Fill the water tank (11) with tap water mixed with a measure (25 ml) of the descaling fluid (17\*).
- d) Plug in the iron and select the maximum steam setting “max” by pressing the steam selection button (4).
- e) Hold the iron over a sink or a container to collect the water.
- f) Grip the handle (1) until the water tank (11) is empty. This could take several minutes.
- g) Then follow the procedure described above in section “3. calc’n clean” until particles no longer come out of the soleplate (13) of the iron.

## 9 Multiple descaling system

Depending on the model, this range of irons is equipped with the following de-scaling features “AntiCalc”.

### 1. self-clean

The self-clean filter between the water tank and the pump prevents scale impairing the steam generation system and ensures the optimum production of steam.

### 2. anti-calc

The “anti-calc” cartridge has been designed to reduce the build-up of scale produced during steam ironing, helping to extend the useful life of your iron. Nevertheless the “anti-calc” cartridge cannot prevent all of the scale that is produced naturally over time.

### 3. calc’n clean

The “calc’n clean” function helps to remove scale particles out of the steam chamber. Use this function approximately every 2 weeks, if the water in your area is very hard.

Follow the procedure described below:

- a) Remove the plug from the socket, ensure that the iron has cooled down and that the water tank (11) is empty.
- b) Set the temperature control (15) to the “calc’n clean” setting.

## Anti-drip system

If the temperature control (15) is set too low (below “...”), the steam is automatically switched off to prevent water from dripping out of the soleplate (13).

The “ActiveControl Advanced” indicator lamp (3) on the handle flashes and the pump will not work.



(model dependent)

The fabric-protection cover (18\*) is used for steam-ironing delicate garments at maximum temperature without damaging them.

Use of the protector also does away with the need for a cloth to prevent shine on dark materials.

It is advisable to first iron a small section on the inside of the garment to see if it is suitable.

To attach the fabric protector to the iron, place the tip of the iron into the end of the fabric protector and press the rear of the protector upward until you hear a click. To release the fabric protector, pull down on the clip at the rear and remove the iron.



### **⚠ Attention ! Risk of burns !**

**Always unplug the appliance from the mains supply before carrying out any cleaning or maintenance operation on it.**


- If the iron is only slightly soiled, pull out the plug and allow the soleplate (13) to cool down. Wipe the housing and the soleplate with a damp cotton cloth only.
- If the cloth is synthetic, it may melt due to the high temperature on the soleplate (13), switch off the steam and rub off any residue immediately with a thickly folded, dry cotton cloth.
- To keep the soleplate (13) smooth, you should avoid hard contact with metal objects. Never use a scouring pad, or chemicals to clean the soleplate.
- Never decalcify the tank (11) or treat it with detergents or solvents, otherwise the iron will drip water whilst steaming.



- Open the water inlet lid (9).
- Hold the iron with the front facing down and shake it gently until the water tank (11) is empty.
- Set the iron aside in a vertical position to cool down.
- Coil the power cable (16) loosely around the heel of the iron, before storing.
- Store the iron in an upright position.



Steam production consumes the most energy. To help minimise the energy used, follow the advice below:

- Start by ironing the fabrics that require the lowest ironing temperature. Check the recommended ironing temperature in the label on the garment.
- Regulate the steam according to the selected ironing temperature, following the instructions in this manual. Iron at "eco" steam setting (see "setting the steam level" section).
- Try to iron the fabrics while they are still damp and reduce the steam setting. Steam will be generated from the fabrics rather than the iron. If you tumble dry your fabrics before ironing them, set the tumble drier on the 'iron dry' programme.
- If the fabrics are damp enough, set the steam to the  position (see "ironing without steam" section).

## Advice on disposal

Our goods come in optimised packaging. This basically consists in using non-contaminating materials which should be handed over to the local waste disposal service as secondary raw materials. Your local town council can give you information about how to dispose of obsolete appliances.



**This appliance is labelled in accordance with European Directive 2002/96/EU concerning used electrical and electronic appliances (waste electrical and electronic equipment -WEEE).**

**The guideline determines the framework for the return and recycling of used appliances as applicable throughout the EU.**

## Guarantee conditions

The terms of the guarantee for this appliance are in accordance with that stated by our representative for the country in which it is sold. The details of these conditions can be obtained from the retailer from whom the appliance was purchased. The purchase receipt must be presented when making any claims against the terms of this guarantee.

## Trouble shooting

Problem	Probable cause	Solution
The iron does not heat up.	<ol style="list-style-type: none"> <li>1. Temperature control (15) set to minimum.</li> <li>2. No mains supply.</li> <li>3. The "SensorSteam" system has been activated. The iron is set to stand-by.</li> </ol>	<ol style="list-style-type: none"> <li>1. Turn to a higher position.</li> <li>2. Check with another appliance or plug the iron into a different socket.</li> <li>3. Grip the handle (1) of the iron to re-start it.</li> </ol>
"ActiveControl Advanced" indicator lamp (3) flashes.	<ul style="list-style-type: none"> <li>• The "SensorSteam" system has been activated. The iron is set to stand-by.</li> </ul>	<ul style="list-style-type: none"> <li>• Grip the handle (1) of the iron to re-start it.</li> </ul>
Iron difficult to slide on the clothing.	<ul style="list-style-type: none"> <li>• Clothing is too wet.</li> </ul>	<ul style="list-style-type: none"> <li>• Reduce the steam amount by selecting "eco" or "XX" settings.</li> </ul>
The clothes tend to stick.	<ul style="list-style-type: none"> <li>• The temperature is too high.</li> </ul>	<ul style="list-style-type: none"> <li>• Turn the temperature control (15) down and wait until the iron has cooled down.</li> </ul>
Water drips out of the soleplate together with steam.	<ol style="list-style-type: none"> <li>1. Temperature control (15) setting is too low.</li> <li>2. Steam control is set too high in conjunction with a low temperature.</li> <li>3. You have pressed the shot of steam button (6) repeatedly without waiting for 5 seconds between each press.</li> <li>4. Pure distilled water has been used (see "Filling the water tank" section) or other products such as fragrant water have been added to the tank.</li> </ol>	<ol style="list-style-type: none"> <li>1. Turn the temperature control (15) to a higher setting (between "••" and "max") and wait until the green steam setting indicator lamp stops flashing.</li> <li>2. Set the steam control to a lower setting.</li> <li>3. Wait 5 seconds between each press of the jet of steam button.</li> <li>4. Mix distilled water with tap water as directed in the "Filling the water tank" section and never add any other products to the water tank (unless recommended by Bosch).</li> </ol>
Steam does not come out.	<ol style="list-style-type: none"> <li>1. Steam control is set to "XX" position.</li> <li>2. No water in the tank (11).</li> <li>3. The temperature is too low. Anti-drip system is activated.</li> </ol>	<ol style="list-style-type: none"> <li>1. Set the steam control to "eco" or "max" position.</li> <li>2. Fill the tank (11).</li> <li>3. Set to a higher temperature if compatible with the fabric.</li> </ol>
Spray does not work.	<ol style="list-style-type: none"> <li>1. No water in the tank (11).</li> <li>2. Obstructed mechanism.</li> </ol>	<ol style="list-style-type: none"> <li>1. Fill the water tank (11).</li> <li>2. Contact the Technical Service.</li> </ol>
Smoke comes out when connecting the iron for the first time.	<ul style="list-style-type: none"> <li>• This may be caused by the lubrication of some of the internal parts.</li> </ul>	<ul style="list-style-type: none"> <li>• This is normal and will stop after a few minutes.</li> </ul>
Deposits come out through the holes in the soleplate	<ul style="list-style-type: none"> <li>• Traces of lime scale are coming out of the steam chamber.</li> </ul>	<ul style="list-style-type: none"> <li>• Carry out a cleaning cycle (see "calc'n clean" section).</li> </ul>
The appliance makes a pumping sound.	<ul style="list-style-type: none"> <li>• Water is being pumped into the steam chamber.</li> </ul>	<ul style="list-style-type: none"> <li>• This is normal.</li> </ul>

If none of the above solves the problem, get in touch with an authorised technical service.

**You can download this manual from the local homepages of Bosch.**



**Great Britain**

Bosch Customer Service  
Grand Union House  
Old Wolverton Road  
Milton Keynes  
MK12 5PT  
UK +44 (0)844 892 8923  
IRL +353 (0)1450 2655  
[www.bosch-home.co.uk](http://www.bosch-home.co.uk)