

User Manual

GETTING STARTED? EASY.



ZWF 71440W

EN User Manual
Washing Machine

ZANUSSI

SAFETY INFORMATION

Before the installation and use of the appliance, carefully read the supplied instructions. The manufacturer is not responsible if an incorrect installation and use causes injuries and damages. Always keep the instructions with the appliance for future reference.

CHILDREN AND VULNERABLE PEOPLE SAFETY

- This appliance can be used by children aged from 8 years and above and persons with reduced physical, sensory or mental capabilities or lack of experience and knowledge if they have been given supervision or instruction concerning use of the appliance in a safe way and understand the hazards involved.
- Do not let children play with the appliance.
- Children of less than 3 years should be kept away unless continuously supervised.
- Keep all packaging away from children.
- Keep all detergents away from children.
- Keep children and pets away from the appliance door when it is open.
- If the appliance has a child safety device, we recommend you activate it.
- Cleaning and user maintenance shall not be made by children without supervision.

GENERAL SAFETY

- Do not change the specification of this appliance.
- Obey the maximum load volume of 7 kg (refer to the “Programme chart” chapter).
- The operating water pressure (minimum and maximum) must be between 0,5 bar (0,05 MPa) and 8 bar (0,8 MPa).
- The ventilation openings in the base (if applicable) must not be obstructed by a carpet.
- The appliance is to be connected to the water mains using the new supplied hose-sets. Old hose sets must not be reused.

- If the supply cord is damaged, it must be replaced by the manufacturer, its Authorised Service Centre or similarly qualified persons in order to avoid a hazard.
- Before maintenance, deactivate the appliance and disconnect the mains plug from the mains socket.
- Do not use water spray and steam to clean the appliance.
- Clean the appliance with a moist soft cloth. Only use neutral detergents. Do not use abrasive products, abrasive cleaning pads, solvents or metal objects.

SAFETY INSTRUCTIONS

INSTALLATION

- Remove all the packaging and the transit bolts.
- Keep the transit bolts. When you move the appliance again you must block the drum.
- Always be careful when you move the appliance because it is heavy. Always wear safety gloves.
- Do not install or use a damaged appliance.
- Obey the installation instruction supplied with the appliance.
- Do not install or use the appliance where the temperature is less than 0 °C or where it is exposed to the weather.
- Make sure that the floor where you install the appliance is flat, stable, heat resistant and clean.
- Make sure that there is air circulation between the appliance and the floor.
- Adjust the feet to have the necessary space between the appliance and the carpet.
- Do not install the appliance where the appliance door can not be fully opened.

ELECTRICAL CONNECTION

- The appliance must be earthed.
- Always use a correctly installed shockproof socket.
- Make sure that the electrical information on the rating plate agrees with the power supply. If not, contact an electrician.
- Do not use multi-plug adapters and extension cables.
- Make sure not to cause damage to the mains plug and to the mains cable. Should the mains cable need to be replaced, this must be carried out by our Authorised Service Centre.
- Connect the mains plug to the mains socket only at the end of the installation. Make sure that there is access to the mains plug after the installation.

- Do not touch the mains cable or the mains plug with wet hands.
- Do not pull the mains cable to disconnect the appliance. Always pull the mains plug.
- Only for UK and Ireland: The appliance has a 13 amp mains plug. If it is necessary to change the fuse in the mains plug, use a 13 amp ASTA (BS 1362) fuse.
- This appliance complies with the E.E.C. Directives.

WATER CONNECTION

- Make sure not to cause damage to the water hoses.
- Before you connect the appliance to new pipes or pipes not used for a long time, let the water flow until it is clean.
- The first time you use the appliance, make sure that there is no leakage.

USE



WARNING! Risk of injury, electrical shock, fire, burns or damage to the appliance.

- Use this appliance in a household only.
- Obey the safety instructions on the detergent packaging.
- Do not put flammable products or items that are wet with flammable products in, near or on the appliance.
- Make sure that you remove all metal objects from the laundry.
- Do not put a container to collect possible water leakage under the appliance. Contact the Authorised Service Centre to ensure which accessories can be used.
- Do not touch the glass of the door while a programme operates. The glass can be hot.

SERVICE

- To repair the appliance contact an Authorised Service Centre.
- Use original spare parts only.

DISPOSAL

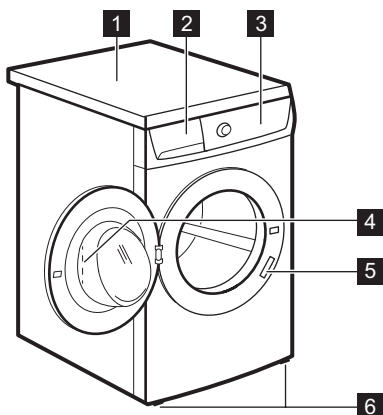


WARNING! Risk of injury or suffocation.

- Disconnect the appliance from the mains supply.
- Cut off the mains cable and discard it.
- Remove the door catch to prevent children and pets to get closed in the appliance.

PRODUCT DESCRIPTION

APPLIANCE OVERVIEW



- 1 Worktop
- 2 Detergent dispenser
- 3 Control panel
- 4 Door handle
- 5 Rating plate
- 6 Feet for the appliance level

INSTALLATION ON SUSPENDED FLOORING

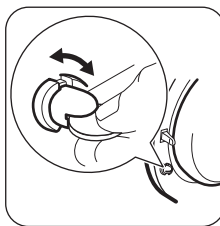
Suspended wooden floors are particularly susceptible to vibration.

To help prevent vibration we recommend you place a waterproof wood panel, at least 15 mm thick under the appliance, secured to at least 2 floor beams with screws, the wood panel must extend beyond the front feet.

If possible install the appliance in one of the corners of the room, where the floor is more stable.

CHILD SAFETY

This device prevents children or pets to be closed in the drum.



- Turn the device clockwise, until the groove is horizontal. You cannot close the door.
- To close the door, turn the device anti-clockwise until the groove is vertical.

FIXING PLATE KIT (4055171146)

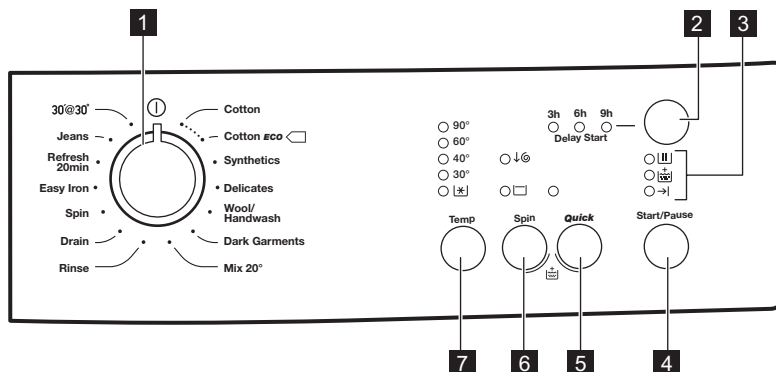
Available from your authorized dealer.

If you install the appliance on a plinth, secure the appliance in the fixing plates.

Read carefully the instructions supplied with the accessory.

EASY START

CONTROL PANEL DESCRIPTION



- 1** Programme knob
- 2** Delay Start button (Delay Start)
- 3** Indicators
- 4** Start/Pause button (Start/Pause)
- 5** Super Quick button (Quick)
- 6** Automatic spin reduction ↓⌀ and Rinse Hold
- 7** Temperature button (Temp)

INDICATORS



- *Washing phase*

The indicator comes on after pressing the Start button. This means the appliance is operating.



- *Extra rinse*


The indicator comes on when the appliance performs the extra rinse phase.

→| - *End of cycle*

The indicator comes on when the programme is completed.

PROGRAMME CHART

Programme Temperature range	Maximum load Maximum spin speed	Programme description (Type of load and soil level)
Cotton 90°C - Cold	7 kg 1400 rpm	White cotton and coloured cotton. Normal soil and light soil.

Programme Temperature range	Maximum load Maximum spin speed	Programme description (Type of load and soil level)
 Cotton Eco ¹⁾ 60°C - 40°C	7 kg 1400 rpm	White cotton and colour-fast cotton. Normal soil. The energy consumption decreases and the time of the washing programme is extended.
Synthetics 60°C - Cold	3 kg 1200 rpm	Synthetic items or mixed fabric items. Normal soil.
Delicates 40°C - Cold	3 kg 700 rpm	Delicate fabrics as acrylics, viscose, polyester items. Normal soil.
Wool/Handwash 40°C - Cold	2 kg 1200 rpm	Machine washable wool, hand washable wool and delicate fabrics with «hand washing» care symbol. ²⁾
Dark Garments 40°C	3 kg 1400 rpm	Cotton items or mixed fabric items in dark colours. Normal soil.
Mix 20° 20°C	2 kg 1200 rpm	Special programme for cotton, synthetic and mixed fabrics with light soil. Set this programme to decrease the energy consumption. Make sure that the detergent is for low temperature in order to have good washing results ³⁾ .
Rinse	7 kg 1400 rpm ⁴⁾	To rinse and spin the laundry. All fabrics.
Drain	7 kg	To drain the water in the drum. All fabrics.
Spin	7 kg 1400 rpm	To spin the laundry and to drain the water in the drum. All fabrics.
Easy Iron 60°C - Cold	1 kg 900 rpm	Synthetic items to be gentle washed. Normal and light soil. ⁵⁾
Refresh 20min 30°C	1 kg 900 rpm	Synthetic and delicate items. Light soil items or items to refresh.
Jeans 60°C - Cold	3 kg 1200 rpm	Items in denim and jersey. Normal soil.

Programme Temperature range	Maximum load Maximum spin speed	Programme description (Type of load and soil level)
30° @ 30° 30°C	3 kg 700 rpm	A short cycle for synthetics and delicate items with light soil level or for items to freshen up.

1) Standard programmes for the Energy Label consumption values. According to regulation 1061/2010, these programmes are respectively the «Standard 60°C cotton programme» and the «Standard 40°C cotton programme». They are the most efficient programmes in terms of combined energy and water consumption for washing normally soiled cotton laundry.



The water temperature of the washing phase may differ from the temperature declared for the selected programme.

2) During this cycle the drum rotates slowly to ensure a gentle washing. It can seem that the drum doesn't rotate or doesn't rotate properly. Consider this as a normal functioning of the appliance.




3) The appliance performs the short heating phase if the water temperature is below 20°C. The appliance can show the temperature setting as "cold".

4) The default spin speed is 700 rpm.

5) To reduce the creases of the laundry, this cycle regulates the water temperature and performs a soft wash and spin phase. The appliance adds some rinses.

Programme options compatibility

Programme			Quick ¹⁾		Delay Start
Cotton	■	■	■	■	■
Cotton Eco	■	■		■	■
Synthetics	■	■	■	■	■
Delicates	■	■	■	■	■
Wool/Handwash	■	■			■
Dark Garments	■	■		■	■
Mix 20°	■	■		■	■
Rinse	■	■		■	■
Drain					■
Spin	■				■
Easy Iron	■	■		■	■
Refresh 20min	■				■
Jeans	■	■			■

Programme			Quick ¹⁾		Delay Start
30' @ 30°	■				■

1) When you set the Quick option, we recommend that you decrease the quantity of the laundry. It is possible to keep the full load but the washing results can be unsatisfactory. Recommended load: cotton: 3,5 kg, synthetics and delicates: 1,5 kg.

CONSUMPTION VALUES



The data of this table are approximate. Different causes can change the data: the quantity and type of laundry, the water and ambient temperature.

Programmes	Load (kg)	Energy consumption (kWh)	Water consumption (litre)	Approximate programme duration (minutes)	Remaining moisture (%) ¹⁾
Cotton 60 °C	7	1,34	68	157	53
Cotton 40 °C	7	0,78	61	157	53
Synthetics 40 °C	3	0,60	56	103	35
Delicates 40 °C	3	0,55	59	81	35
Wool/Handwash 30 °C ²⁾	2	0,30	53	57	30

Standard cotton programmes

Standard 60 °C cotton	7	0,92	45	250	53
Standard 60 °C cotton	3,5	0,68	35	204	53
Standard 40 °C cotton	3,5	0,53	36	189	53

1) At the end of spin phase.

2) Not available for some models.


Off Mode (W)	Left On Mode (W)
0,48	0,48

The information given in the chart above are in compliance with the EU Commission regulation 1015/2010 implementing directive 2009/125/EC.

OPTIONS

TEMP

With this option you can change the default temperature.


Indicator  = cold water.


The indicator of the set temperature comes on.

SPIN

With this button you can set one of these options:

The indicator of the set option comes on.

- **Automatic spin reduction** 
Set this option to decrease the maximum spin speed to a half, but not less than 400 rpm.
Suitable for very delicate fabrics.

- **Rinse Hold** 
Set this option to prevent the laundry creases.
The drum turns regularly to prevent the laundry creases.



There is a water in the drum when the programme is completed. The door stays locked. You must drain the water to unlock the door. To drain the water refer to 'At the end of the programme'.

QUICK

Press this button to decrease the programme duration.

Set this option for items with light soil or items to refresh.

The related indicator comes on.

EXTRA RINSE

With this option you can add some rinses to a washing programme.

Use this option for persons allergic to detergents and in areas where the water is soft.

The related indicator comes on.¹⁾

DELAY START


With this option you can delay the start of a programme by 3, 6 or 9 hours.

The indicator of selected delay comes on.

SETTINGS

PERMANENT EXTRA RINSE

With this option you can permanently have an extra rinse when you set a new programme.

- To **activate/deactivate** this option press Spin and Quick at the same time until the indicator  **comes on/goes off**.

BEFORE FIRST USE

1. Put a small quantity of detergent in the compartment for washing phase.
2. Set and start a programme for cotton at the highest temperature without laundry.

This removes all possible dirt from the drum and the tub.

DAILY USE



WARNING! Refer to Safety chapters.

LOADING THE LAUNDRY

Open the water tap. Connect the mains plug to the mains socket.

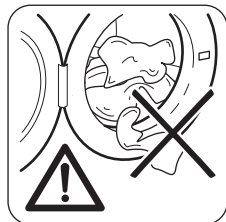
1. Pull the door handle to open the appliance door.
2. Put the laundry in the drum, one item at a time.

¹⁾ See in "Settings" how to activate this option.

3. Shake the items before you put them in the appliance.

Make sure not to put too much laundry in the drum. Refer to max. loads indicated in "Programme chart".

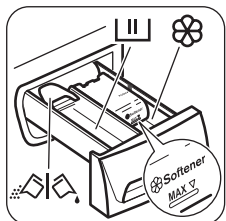
4. Close the door.



CAUTION!





Make sure that no laundry stays between the seal and the door. There is a risk of water leakage or damage to the laundry.

USING DETERGENT AND ADDITIVES

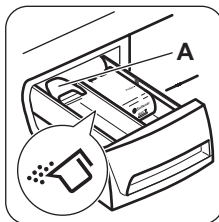


1. Measure out the detergent and the fabric conditioner.
2. Put the detergent and the fabric conditioner into the compartments.
3. Carefully close the detergent drawer.

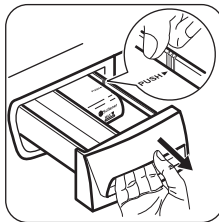
DETERGENT COMPARTMENTS

	<p>Detergent compartment for washing phase.</p> <p>If you use liquid detergent, put it immediately before you start the programme.</p>
	<p>Compartment for liquid additives (fabric conditioner, starch).</p> <p> CAUTION! Do not exceed the MAX level.</p>
	<p>Flap for powder or liquid detergent.</p>

LIQUID OR POWDER DETERGENT

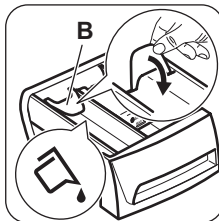


The default position of the flap is **A** (powder detergent).



To use liquid detergent:

1. Remove the drawer.
- Push the drawer edge in the place with the arrow (PUSH) to remove the drawer easily.

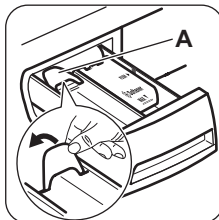


2. Adjust the flap in position **B**.
3. Put back the drawer in the recess.



When you use the liquid detergent:

- Do not use gelatinous or thick liquid detergents.
- Do not put more liquid than 120 ml.
- Do not set the delay start.



When the flap is in position **B** and you want to use powder detergent:

1. Remove the drawer.
2. Adjust the flap in position **A**.
3. Put back the drawer in the recess.

SETTING A PROGRAMME

1. Turn the programme knob to switch the appliance on and set the programme:
The indicator of the button Start/Pause flashes.
2. If necessary, change the temperature and the spin speed or add available options.

When you activate an option, the indicator of the set option comes on.




If you set something incorrect, the indicator of button Start/Pause flashes red.

STARTING A PROGRAMME WITHOUT THE DELAY START

Press the button Start/Pause.

The corresponding indicator stops to flash.

The phase indicator  illuminates and stays on. The programme starts and the door locks.



The drain pump can operate for a short time at the beginning of the washing cycle.

STARTING A PROGRAMME WITH THE DELAY START OPTION

1. Press the button Delay Start repeatedly to set the required delay.

The indicator of the set delay comes on.

2. Press the button Start/Pause:
 - The door is locked.
 - The appliance starts the countdown.
 - When the countdown is completed, the programme starts automatically.



You can cancel or change the delay setting before you press the button Start/Pause. After pressing the button Start/Pause, you can only cancel the delay.

To cancel the delay start:

- a. Press the button Start/Pause to set the appliance to pause. The corresponding indicator flashes.
- b. Press the button Delay Start once; the indicator of the set delay goes off. Press the button Start/Pause again to start the programme immediately.

INTERRUPTING A PROGRAMME AND CHANGING THE OPTIONS

You can change only some options before they operate.

1. Press the button Start/Pause.

The indicator flashes.

2. Change the options.
3. Press the button Start/Pause again.

The programme continues.

CANCELLING A RUNNING PROGRAMME

1. Turn the programme knob to position ① to cancel the programme and to deactivate the appliance.
2. Turn the programme knob again to activate the appliance. Now, you can set a new washing programme.



Before starting the new programme the appliance could drain the water. In this case, make sure that the detergent is still in the detergent compartment, if not fill the detergent again.

OPENING THE DOOR

While a programme or the delay start operates, the appliance door is locked.



CAUTION! If the temperature and level of the water in the drum are too high and the drum still rotates, you cannot open the door.


To open the door during the first minutes of the cycle or when the delay start operates:

1. Press the button Start/Pause to pause the appliance.
2. Wait some minutes until the door unlocks.
3. You can open the door.
4. Close the door and touch the button Start/Pause again. The programme (or the delay) continues.

AT THE END OF THE PROGRAMME

- The appliance stops automatically.
- The indicator of the button Start/Pause goes off. After a couple of minutes the phase indicator →| illuminates and stays on.
- Turn the programme knob to position ① to deactivate the appliance.
- You can open the door.
- Remove the laundry from the appliance. Make sure that the drum is empty.
- Close the water tap.
- Keep the door and the detergent drawer ajar, to prevent the mildew and odours.

The washing programme is completed, but there is water in the drum:

- The drum turns regularly to prevent the creases in the laundry.
- The indicator  stays on to remind you to drain the water.
- The indicator of the button Start/Pause is off. The door is locked.

- You must drain the water to open the door.

Draining the water:

1. Set a draining (Drain) or a spinning (Spin) programme.
2. Press the button Start/Pause.
The appliance drains the water and spins.
3. When the programme is completed:
 - The indicator of the button Start/Pause goes off and after a couple of minutes the phase indicator → illuminates.
 - You can open the door.
4. Turn the programme knob to the position ① to deactivate the appliance.

HINTS AND TIPS

THE LAUNDRY LOAD

- Divide the laundry in: white, coloured, synthetics, delicates and wool.
- Obey the washing instructions that are on the laundry care labels.
- Do not wash together white and coloured items.
- Some coloured items can discolour with the first wash. We recommend that you wash them separately for the first times.
- Button up pillowcases, close zippers, hooks and poppers. Tie up belts.
- Empty the pockets and unfold the items.
- Turn inside out multilayered fabrics, wool and items with painted illustrations.
- Remove hard stains.
- Wash with a special detergent heavy soil stains.
- Be careful with the curtains. Remove the hooks or put the curtains in a washing bag or pillowcase.
- Do not wash in the appliance laundry without hems or with cuts. Use a washing bag to wash small and/or delicate items (e.g. underwired bras, belts, tights, etc.).
- A very small load can cause balance problems with the spin phase. If this occurs, adjust manually the items in the tub and start the spin phase again.

STUBBORN STAINS

For some stains, water and detergent is not sufficient.

We recommend that you remove these stains before you put the items in the appliance.

Special stain removers are available. Use the special stain remover that is applicable to the type of stain and fabric.

STAND BY

Some minutes after the end of the washing programme, if you do not deactivate the appliance, the energy saving status activates. The energy saving status decreases the energy consumption when the appliance is on the standby:

- All indicators go off.
- The indicator of the button Start/Pause flashes slowly.

Press one of the buttons to deactivate the energy saving status.

DETERGENTS AND ADDITIVES

- Only use detergents and additives specially made for washing machines:
 - powder detergents for all types of fabric,
 - powder detergents for delicate fabrics (40 °C max) and woollens,
 - liquid detergents, preferably for low temperature wash programmes (60 °C max) for all types of fabric, or special for woollens only.
- Do not mix different types of detergents.
- To help the environment, do not use more than the correct quantity of detergent.
- Obey the instructions that you find on the on packaging of these products.
- Use the correct products for the type and colour of the fabric, the programme temperature and the level of soil.
- If your appliance has not the detergent dispenser with the flap device, add the liquid detergents with a dosing ball (supplied by the detergent's manufacturer).

ECOLOGICAL HINTS

- Set a programme without the prewash phase to wash laundry with normal soil.
- Always start a washing programme with the maximum load of laundry.
- If necessary, use a stain remover when you set a programme with a low temperature.
- To use the correct quantity of the detergent, check the water hardness of your domestic system

WATER HARDNESS

If the water hardness in your area is high or moderate, we recommend that you use a water softener for washing machines. In areas where the

water hardness is soft it is not necessary to use a water softener.

To know the water hardness in your area, contact your local water authority.

Use the correct quantity of the water softener. Obey the instructions that you find on the packaging of the product.

CARE AND CLEANING



WARNING! Refer to Safety chapters.

EXTERNAL CLEANING

Clean the appliance only with soap and warm water. Fully dry all the surfaces.



CAUTION! Do not use alcohol, solvents or chemical products.

DESCALING

If the water hardness in your area is high or moderate, we recommend that you use a water descaling product for washing machines.

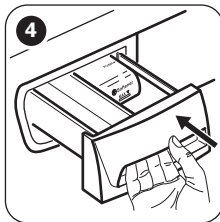
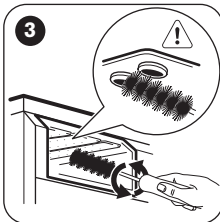
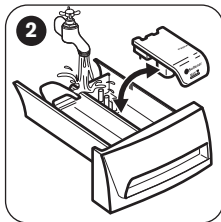
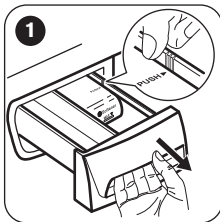
Regularly examine the drum to prevent limescale and rust particles.

To remove rust particles use only special products for washing machine. Do this separately from the laundry wash.

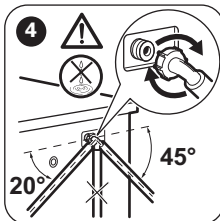
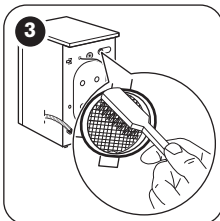
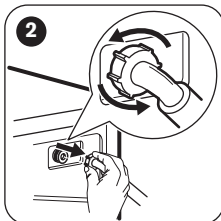
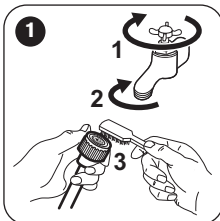


Always obey the instructions that you find on the packaging of the product.

CLEANING THE DETERGENT DISPENSER



CLEANING THE INLET HOSE AND THE VALVE FILTER



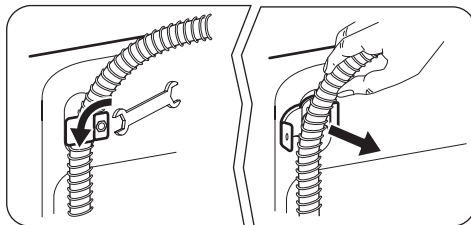
FROST PRECAUTIONS

If the appliance is installed in an area where the temperature can be less than 0 °C, remove the remaining water from the inlet hose and the drain pump.



Do this procedure also when you want to do the emergency drain.

1. Disconnect the mains plug from the mains socket.
2. Remove the water inlet hose.
3. Remove the drain hose from the rear support and unhook it from sink or spigot.
4. Put the ends of the drain and inlet hose in a container. Let the water flow out of the hoses.



5. When no more water flows, install the inlet hose and the drain hose again.



WARNING! Make sure that the temperature is more than 0 °C before you use the appliance again. The manufacturer is not responsible for damages caused by low temperatures.

TROUBLESHOOTING






WARNING! Refer to Safety chapters.

INTRODUCTION

The start of the appliance does not occur or it stops during operation.

First try to find a solution to the problem (refer to the table). If not, contact the Authorised Service Centre.

With some problems, the acoustic signals operate. The **red** indicator of the button Start/Pause flashes and one of the phase indicators comes on, to show an alarm code:

-  - The appliance does not fill with water properly.
-  - The appliance does not drain the water.
-  - The appliance door is open or not closed correctly. Please check the door!
- The indicator of button Start/Pause flashes in red 11 times and 1 (or 2 or 3) time(s) in green: the mains supply is unstable. Wait until the mains supply is stable and the appliance automatically starts operating.



WARNING! Deactivate the appliance before you do the checks.

POSSIBLE FAILURES

Problem	Possible solution
The programme does not start.	<ul style="list-style-type: none"> ▪ Make sure that the mains plug is connected to the mains socket. ▪ Make sure that the appliance door is closed. ▪ Make sure that there is not a damaged fuse in the fuse box. ▪ Make sure that the Start/Pause has been pressed. ▪ If the delay start is set, cancel the setting or wait for the end of countdown. ▪ Deactivate the Child Lock function if it is on (if available).

Problem	Possible solution
The appliance does not fill with water properly.	<ul style="list-style-type: none"> ▪ Make sure that the water tap is open. ▪ Make sure that the pressure of the water supply is not too low. For this information, contact your local water authority. ▪ Make sure that the water tap is not clogged. ▪ Make sure that the filter of the inlet hose and the filter of the valve are not clogged. Refer to "Care and cleaning". ▪ Make sure that the inlet hose has no kinks or bends. ▪ Make sure that the connection of the water inlet hose is correct. ▪ Make sure that the drain hose is in the correct position. The hose may be too low.
The appliance does not drain the water.	<ul style="list-style-type: none"> ▪ Make sure that the sink spigot is not clogged. ▪ Make sure that the drain hose has no kinks or bends. ▪ Make sure that the connection of the drain hose is correct. ▪ Set the drain programme if you set a programme without drain phase. ▪ Set the drain programme if you set an option which ends with water in the drum. ▪ If above mentioned solutions do not help, contact the Authorised Service Centre (as the filter of the drain pump may be clogged).
The spin phase does not operate or the washing cycle lasts longer than usually.	<ul style="list-style-type: none"> ▪ Set the spin programme. ▪ Adjust manually the items in the tub and start the spin phase again. This problem may be caused by balance problems. ▪ If above mentioned solutions do not help, contact the Authorised Service Centre (as the filter of the drain pump may be clogged).
There is water on the floor.	<ul style="list-style-type: none"> ▪ Make sure that the couplings of the water hoses are tight and there is not water leakages. ▪ Make sure that the inlet hose and/or the drain hose have no damages. ▪ Make sure you use the correct detergent and the correct quantity of it.
You cannot open the appliance door.	<ul style="list-style-type: none"> ▪ Make sure that the washing programme is finished. ▪ Set the drain or the spin programme if there is water in the drum.
The appliance makes an unusual noise.	<ul style="list-style-type: none"> ▪ Make sure the levelling of the appliance is correct. Refer to 'Installation Instruction'. ▪ Make sure that the packaging and/or the transit bolts are removed. Refer to 'Installation Instruction'. ▪ Add more laundry in the drum. The load may be too small.
The washing results are not satisfactory.	<ul style="list-style-type: none"> ▪ Increase the detergent quantity or use a different detergent. ▪ Use special products to remove the stubborn stains before you wash the laundry. ▪ Make sure that you set the correct temperature. ▪ Decrease the laundry load.
You cannot set an option.	<ul style="list-style-type: none"> ▪ Make sure that you press only the wanted button(s).

After the check, activate the appliance. The programme continues from the point of interruption. If the problem occurs again, contact the Authorised Service Centre.

SERVICE

We recommend the use of original spare parts. When contacting the Authorised Service Centre, make sure that these data are available. You can

find the information on the rating plate: model (Mod.), PNC (Prod.No.), Serial number (Ser.No.).


TECHNICAL DATA


Dimension	Width/ Height/ Depth/ Total depth	600 mm/ 850 mm/ 559 mm/ 578 mm
Electrical connection	Voltage Overall power Fuse Frequency	230-240 V 2200 W 13 A 50 Hz
Level of protection against ingress of solid particles and moisture ensured by the protective cover, except where the low voltage equipment has no protection against moisture		IPX4
Water supply pressure 1)	Minimum Maximum	0,5 bar (0,05 MPa) 8 bar (0,8 MPa)
Water supply 2)		Cold water
Maximum Load	Cotton	7 kg
Energy Efficiency Class		A+++
Spin Speed	Maximum	1400 rpm

1) The appliance works correctly if the water pressure is not less than 0.05 MPa (0.5 bar). If you can not connect the water inlet hose to the cold water tap of the primary hydraulic system, connect it to your domestic cold water storage system. Make sure not to have more than a distance of 5.02 m (16.5 ft) between the appliance inlet hose and the bottom of the water storage tank.

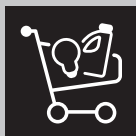
2) Connect the water inlet hose to a water tap with a 3/4" thread.

ENVIRONMENT CONCERNS

Recycle the materials with the symbol . Put the packaging in applicable containers to recycle it. Help protect the environment and human health and to recycle waste of electrical and electronic appliances. Do not dispose appliances marked with

the symbol  with the household waste. Return the product to your local recycling facility or contact your municipal office.

WWW.ZANUSSI.COM/SHOP



192965150-A-122015