

THE COLT COLLECTION

TORQUAY ROAD - GOLF LANE
FOXROCK | DUBLIN 18

Meticulously Designed 5 Bedroom
Detached Family Homes



Welcome to



THE COLT COLLECTION

Exclusive Boutique Living in the Heart of Foxrock

Discover The Colt Collection, an exclusive development of just four luxurious five-bedroom detached homes, ideally positioned on Torquay Road and Golf Lane in the prestigious suburb of Foxrock, South County Dublin.

These impressive residences combine contemporary architectural design with timeless elegance. Each home offers generous living spaces, five beautifully appointed bedrooms and refined finishes throughout, perfectly suited to modern family living.

The Colt Collection has been carefully conceived to provide the privacy, space and quality expected of a Foxrock address. Comprising just four detached homes set within beautifully landscaped grounds, the development balances contemporary architecture with generous proportions, exceptional specification and a strong connection to its private garden setting. Every aspect of the homes has been thoughtfully designed to support modern family living in one of Dublin's most established and sought-after residential neighbourhoods.



Elegance in a Prestigious Foxrock Setting

Nestled within the leafy surroundings of Foxrock, The Colt Collection on Torquay Road and Golf Lane enjoys an exceptional setting just moments from Foxrock Golf Club and within easy reach of Foxrock Village. Here, tranquillity and convenience combine, offering a refined lifestyle in one of South Dublin's most sought-after residential neighbourhoods.

Each home is approached via a private driveway finished in Ballylusk stone, framed by elegant rendered pillars, granite walls with silver granite cappings and mature landscaping - setting the tone for the exceptional craftsmanship found throughout.



Type A Homes

Cedarvale & Beechside

Approx. 259 sq.m / 2,788 sq. ft | Torquay Road

DESIGNED FOR MODERN FAMILY LIVING, THE TYPE A HOMES AT CEDARVALE AND BEECHSIDE COMBINE EXCEPTIONAL SPACE, TIMELESS ELEGANCE AND OUTSTANDING CRAFTSMANSHIP TO CREATE A HOME OF REMARKABLE QUALITY.

From the moment you step inside, the impressive entrance hallway sets the tone, offering a wonderful sense of light, space and sophistication. A practical boot room and beautifully appointed guest WC, featuring premium Duravit sanitary ware, provide both convenience and style for everyday living

To the front of the home, the elegant bay-windowed living room is a welcoming retreat, filled with natural light and ideal for relaxing or entertaining. Pocket doors lead through to the dining room, while striking Crittall-style doors create a stylish transition into the magnificent open-plan kitchen, dining and family area – the true heart of the home. Designed with flexibility in mind, these interconnected spaces can be opened up for modern family living or closed off to create more intimate settings when desired.



The bespoke kitchen by Michael Cox Furniture is a standout feature, showcasing beautifully hand-painted cabinetry, luxurious Calacatta Gold worktops and a thoughtfully designed pantry dock with ambient lighting. A full suite of integrated appliances ensures both functionality and elegance. Expansive sliding doors open directly onto a granite patio and professionally landscaped rear garden, seamlessly blending indoor and outdoor living and creating the perfect setting for family gatherings and summer entertaining. A separate utility room, finished to complement the kitchen, offers additional storage and practicality.

Upstairs, the first floor accommodates four generously sized bedrooms, each thoughtfully designed to maximise comfort and natural light. The luxurious principal suite serves as a private sanctuary, complete with a bespoke walk-in wardrobe and an exquisitely finished en-suite bathroom. A second bedroom also benefits from a walk-in wardrobe, further enhancing the exceptional storage and convenience offered throughout the home.



The top floor provides outstanding versatility, featuring a spacious fifth bedroom with en-suite. Whether used as guest accommodation, a private home office, a teenager's retreat or additional family living space, this level adapts effortlessly to your lifestyle.

Combining elegant design, premium finishes and exceptional attention to detail, these impressive homes offer a rare opportunity to enjoy contemporary luxury in a beautifully crafted family

residence. Every element has been carefully considered to create a home that is as practical as it is beautiful — a place where families can grow, entertain and create lasting memories for years to come.



Type B Homes

Pinecrest & Willowview

Approx. 288 sq.m / 3,100 sq. ft | Golf Lane

THESE IMPRESSIVE HOMES OFFER EXPANSIVE, WELL-BALANCED ACCOMMODATION DESIGNED TO SUPPORT A VARIETY OF MODERN LIFESTYLES.



From the moment you enter, the sense of space and quality is evident. A generous entrance hallway is complemented by a practical boot room and a stylish guest WC finished with premium Duravit sanitary ware.

The ground floor is thoughtfully arranged to provide both elegance and flexibility. A beautifully proportioned living room to the front features a striking bay window, allowing natural light to pour in and creating a warm,

inviting atmosphere. From here, pocket doors lead seamlessly into the dining room, offering a natural flow between spaces that is ideal for both everyday living and entertaining. In addition, a separate reception room enhances the versatility of the home, providing an adaptable space that works perfectly as a home office, snug or playroom.

The kitchen is accessed from the main hallway through elegant Crittall-style doors, creating

a seamless transition between spaces while allowing light to flow beautifully throughout the home. The kitchen and dining area are thoughtfully arranged to balance functionality with comfort, offering a refined yet practical setting for everyday living and entertaining alike. Overhead, a sleek Velux window floods the room with an abundance of natural light. Fully automated, it responds intelligently to changing weather conditions, closing automatically in the event of rain or strong winds - providing both convenience and peace of mind while maintaining a bright, airy atmosphere throughout the day. The space also enjoys direct access to the landscaped rear garden, with large sliding doors opening onto a granite patio, creating a seamless connection between indoor and outdoor living.

As with all homes in The Colt Collection, the kitchen is finished to an exceptional standard, featuring bespoke cabinetry, Calacatta Gold Worktops, a pantry dock with ambient lighting and a full suite of integrated Miele appliances. A separate utility room provides additional practicality, with direct access to the back garden. Upstairs, the first floor hosts four spacious bedrooms, including a luxurious primary suite with walk-in wardrobe and en-suite, alongside a beautifully refined family bathroom, complete with a free standing bathtub, a rain-head shower and a matching vanity unit.

The top floor features a generous fifth bedroom complete with a walk-in wardrobe and en-suite, offering an ideal private retreat for guests or family members. Combining generous proportions, exceptional flexibility and a premium specification throughout, the Type B homes offer an outstanding standard of contemporary family living. Carefully designed to adapt to the evolving needs of modern families, these homes provide a rare combination of space, comfort and elegance in one of Dublin's most desirable residential settings.





Unrivalled Location

A Prime Foxrock Location

Residents enjoy the best of Foxrock living, with the village just moments away. One of Dublin's most sought-after residential addresses, Foxrock is renowned for its village atmosphere, mature surroundings and strong sense of community. The village offers an excellent selection of cafés, restaurants, boutiques and everyday conveniences, all within easy reach.

Additional amenities nearby include:

- 

Foxrock Village with its charming cafés, restaurants, boutiques and local services
- 

Major retail destinations including Cornelscourt, Stillorgan, Dundrum Town Centre and Blackrock
- 

Renowned schools such as St. Gerard's, Loreto Foxrock, Blackrock College and St. Andrew's College
- 

Excellent sporting and leisure facilities including Foxrock Golf Club, Carrickmines Croquet & Lawn Tennis Club, Leopardstown Racecourse and numerous local sports clubs
- 

Convenient transport links via the N11, M50 and LUAS at Carrickmines, providing easy access to Dublin City Centre and beyond

For outdoor enthusiasts, nearby green spaces including Cabinteely Park and Kilbogget Park offer scenic walking trails, playgrounds and recreational amenities, while the Dublin Mountains and coastline are both within easy reach.

Combining the charm and prestige of Foxrock with outstanding amenities, excellent schools and superb connectivity, this exceptional location offers an enviable quality of life.

Conveniently Connected

DRIVING TIMES	TIME
M50 (Junction 15)	c. 4 mins
Carrickmines Park & Ride	c. 4 mins
Cornelscourt & N11	c. 5 mins
Carrickmines Retail Park	c. 8 mins
Leopardstown Racecourse	c. 5 mins
Westwood Club	c. 6 mins
Dundrum Town Centre	c. 15 mins
Dublin City Centre	c. 25 mins
Dublin Airport	c. 30 mins



Life at The Colt Collection

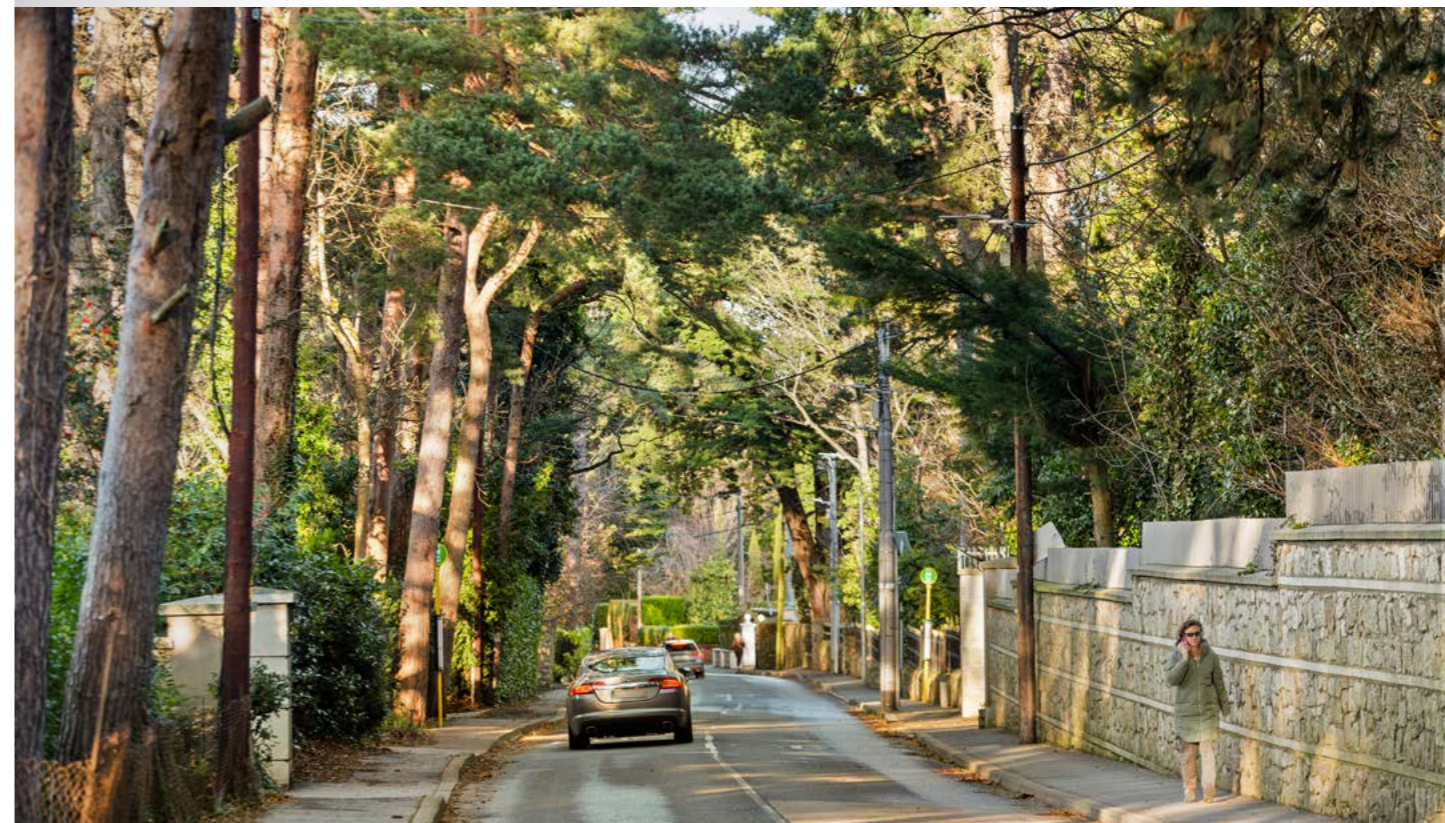
The Best of Foxrock Living

Residents of The Colt Collection will enjoy the benefits of living within easy reach of Foxrock Village, surrounded by elegant homes, mature landscaping and quiet, tree-lined roads that define the area's timeless appeal. The neighbourhood is particularly valued for its welcoming atmosphere and close-knit community, making it an ideal setting for families and those seeking a more relaxed pace of life.

For outdoor enthusiasts, Foxrock's leafy surroundings are complemented by an exceptional range of recreational amenities. Foxrock Golf Club, Leopardstown Racecourse, Carrickmines Croquet & Lawn Tennis Club, Cabinteely Park and Kilbogget Park are all nearby, offering everything from scenic walking trails to sporting facilities.



Despite its tranquil setting, The Colt Collection is exceptionally well connected. A range of public transport options are available nearby, offering easy access across Dublin. Frequent bus services link the area to Blackrock and Dublin City Centre, making daily commuting straightforward and convenient.



You have a choice of two Luas stops which are approximately 2 kilometres away, providing regular services across the city including direct access to St. Stephen's Green. Choose from either the Carrickmines Luas Park & Ride or Central Park Luas stop.



The Colt Collection offers a rare opportunity to enjoy the peace and prestige of Foxrock, with excellent connectivity and an abundance of nearby amenities, all within a thriving and well-regarded community.



Modern Living Redefined

Every Detail Considered

EXTENDING TO APPROXIMATELY 259–288 SQ.M (2,788–3,100 SQ. FT), EACH HOME OFFERS:

- Expansive open-plan living spaces.
- Private gardens for outdoor living
- Elegant kitchens with premium appliances
- Bright, spacious bedrooms with fitted wardrobes
- Luxurious bathrooms and en-suites by Duravit
- Private driveway parking
- Pre-wired for CCTV







Site Plan

Cedarvale

House No. 1

5 Bedroom Detached Home
c. 259 sq.m / 2,788 sq.ft

Beechside

House No. 2

5 Bedroom Detached Home
c. 259 sq.m / 2,788 sq.ft

Pincrest

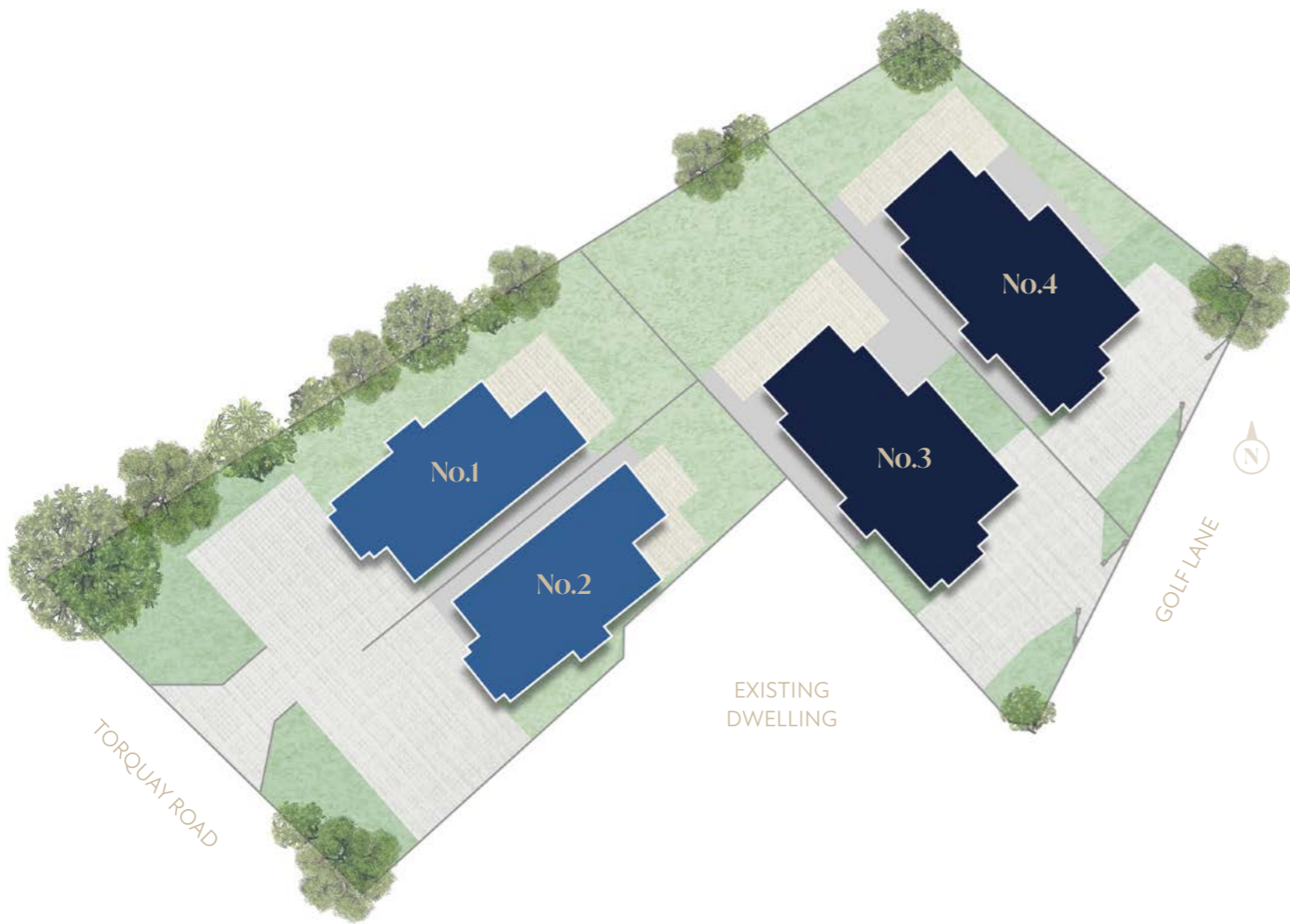
House No. 3

5 Bedroom Detached Home
c. 288 sq.m / 3,100 sq.ft

Willowview

House No. 4

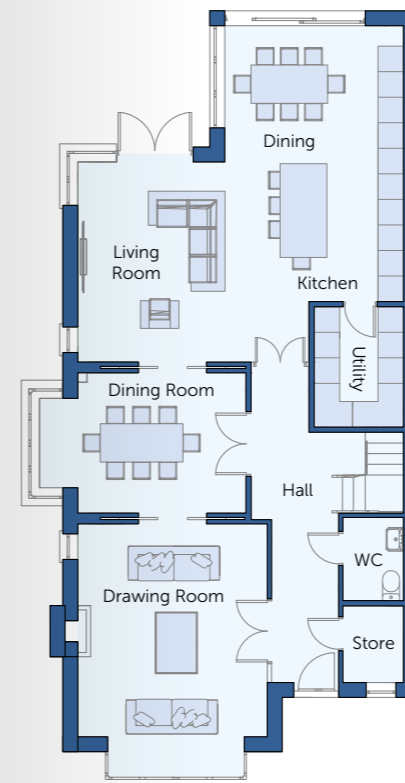
5 Bedroom Detached Home
c. 288 sq.m / 3,100 sq.ft



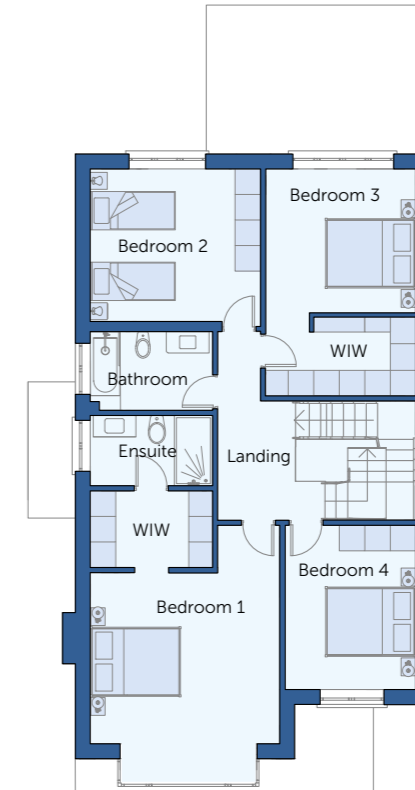
House No. 1

Cedarvale

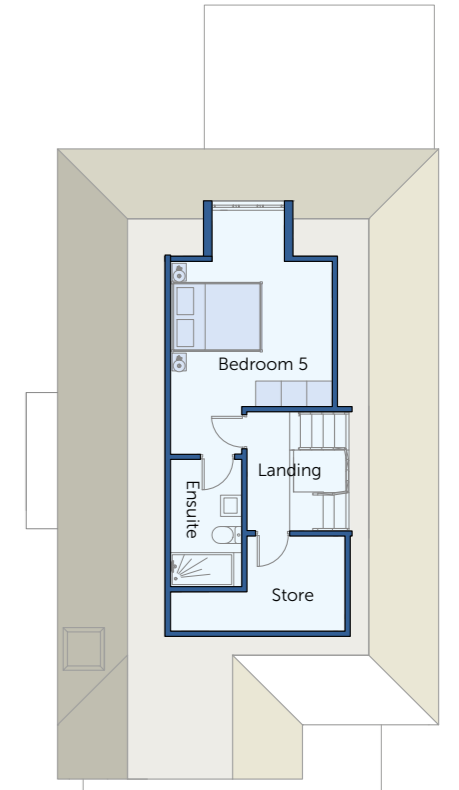
5 Bedroom Detached Home
c. 259 sq.m / 2,788 sq.ft



Ground Floor



First Floor



Second Floor

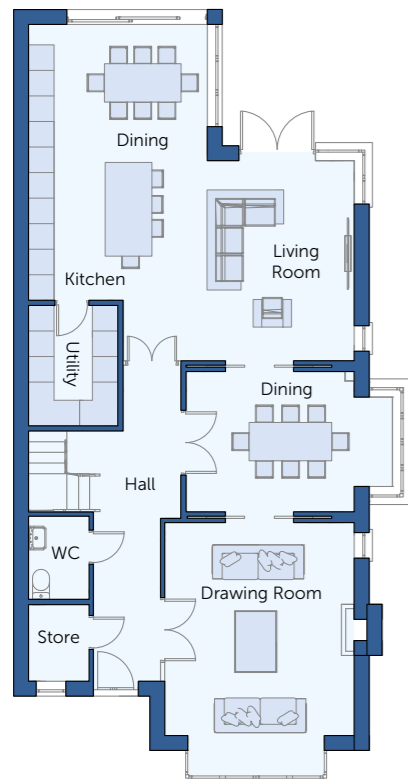
Please speak to a sales agent for any queries. The Site Plan is intended for illustrative purposes only. Construction and landscaping details are subject to change in the course of development. Trees and planting shown are indicative only and the final number and location may vary. Oakwood Group reserves the right to alter the layout, landscaping, and specifications at any time without notice. The Site Plan does not constitute or form part of an offer or contract nor may it be regarded as a representation.

Please note: Floor plans, room areas, and dimensions are indicative only and subject to change. In line with our policy of continuous improvement, we reserve the right to alter the layout, building style, landscaping, and specifications at any time without notice.

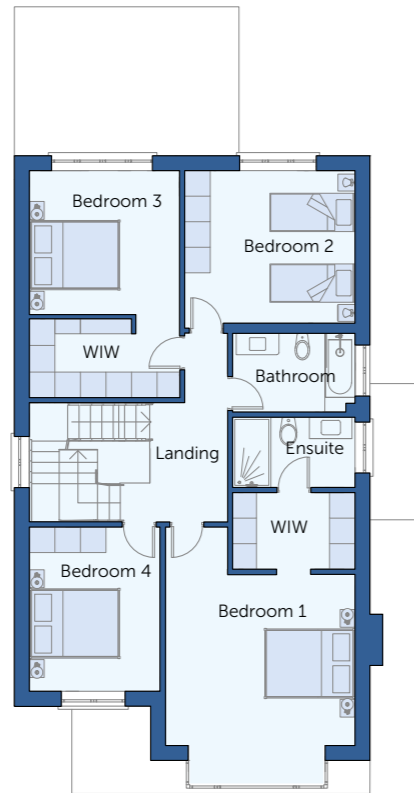
House No. 2

Beechside

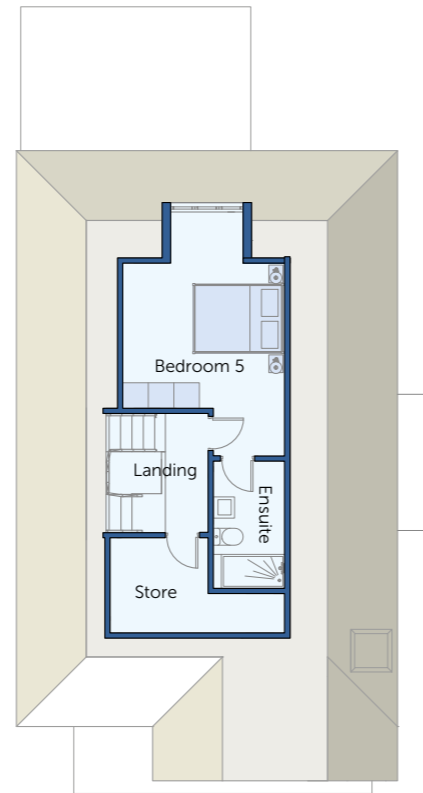
5 Bedroom Detached Home
c. 259 sq.m / 2,788 sq.ft



Ground Floor



First Floor



Second Floor

Please note: Floor plans, room areas, and dimensions are indicative only and subject to change. In line with our policy of continuous improvement, we reserve the right to alter the layout, building style, landscaping, and specifications at any time without notice.

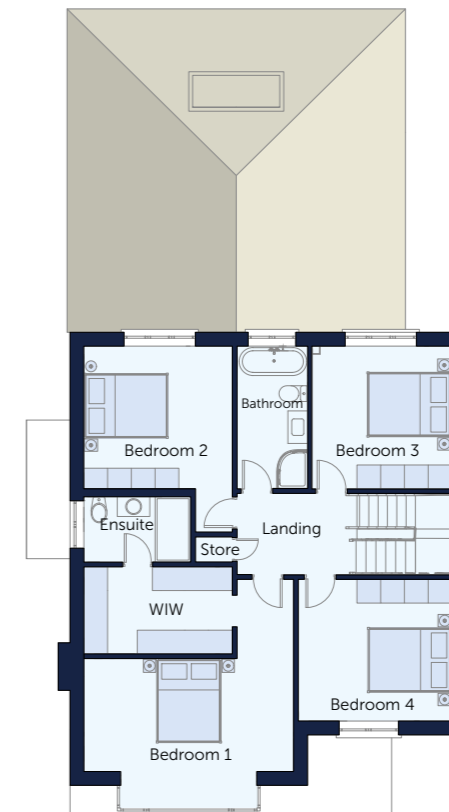
House No. 3

Pinecrest

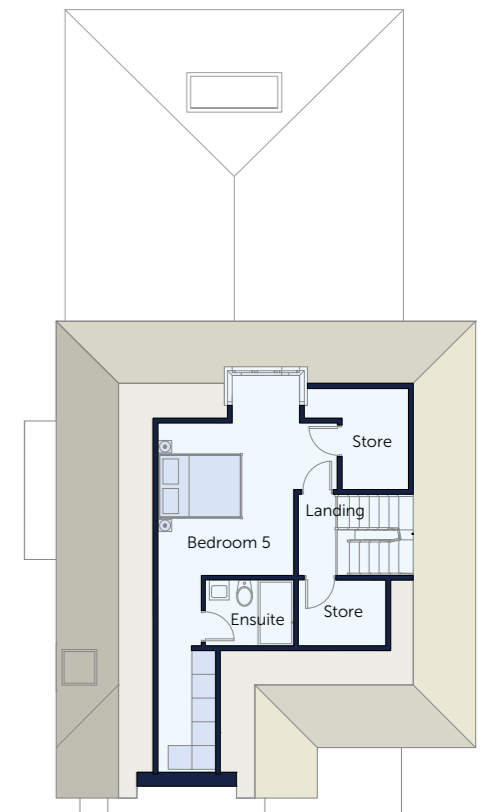
5 Bedroom Detached Home
c. 288 sq.m / 3,100 sq.ft



Ground Floor



First Floor



Second Floor

Please note: Floor plans, room areas, and dimensions are indicative only and subject to change. In line with our policy of continuous improvement, we reserve the right to alter the layout, building style, landscaping, and specifications at any time without notice.



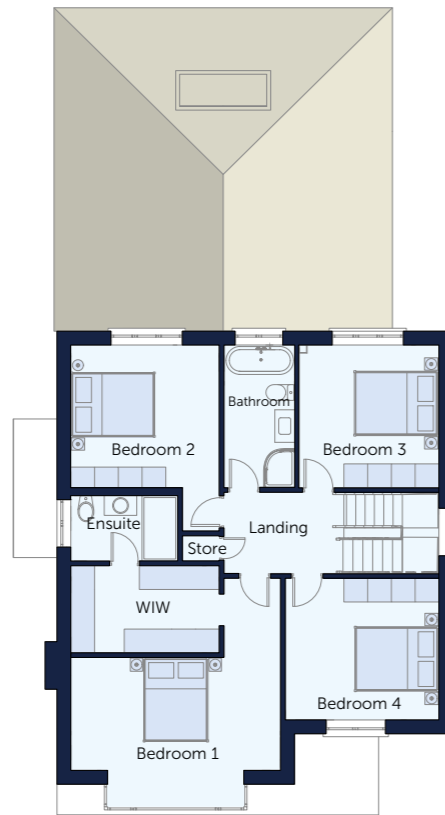
House No. 4

Willowview

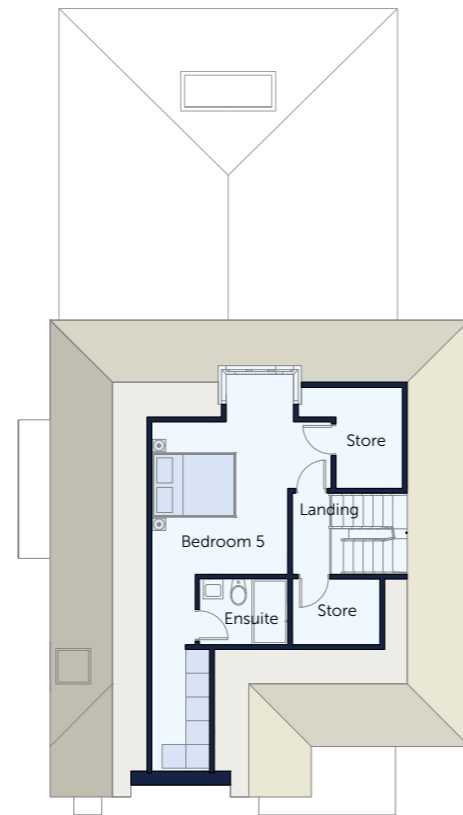
5 Bedroom Detached Home
c. 288 sq.m / 3,100 sq.ft



Ground Floor

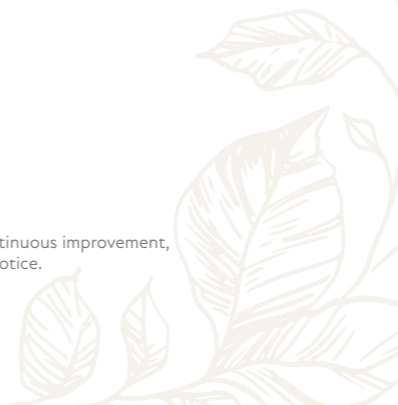


First Floor

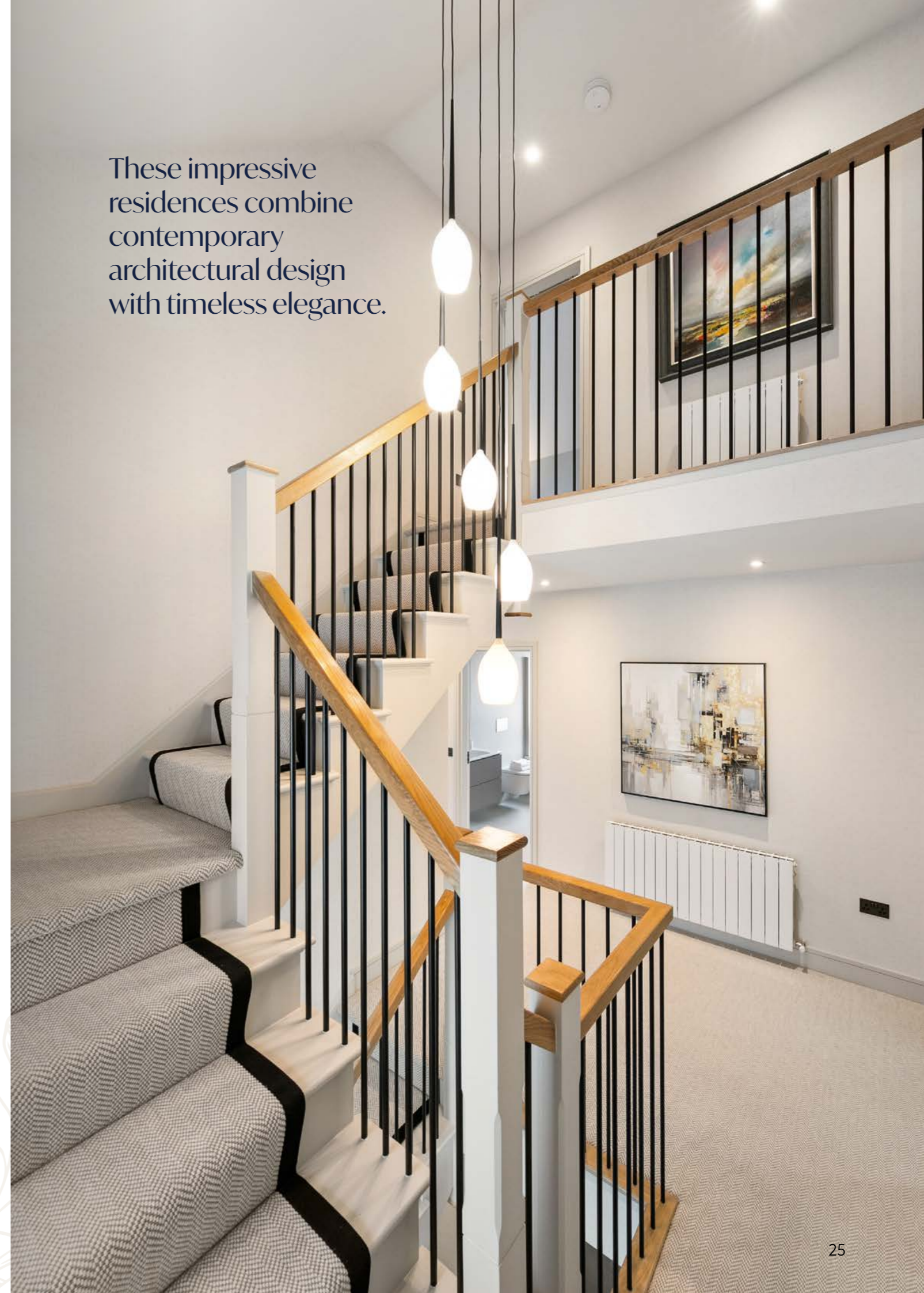


Second Floor

Please note: Floor plans, room areas, and dimensions are indicative only and subject to change. In line with our policy of continuous improvement, we reserve the right to alter the layout, building style, landscaping, and specifications at any time without notice.



These impressive residences combine contemporary architectural design with timeless elegance.



Specifications

A New Standard in Contemporary Living

The Colt Collection represents a refined approach to modern living, where innovative construction meets timeless design. Built using advanced Insulated Concrete Formwork (ICF), each home offers exceptional durability, superior energy efficiency and outstanding comfort. Solid concrete walls throughout set these homes apart, ensuring strength, quietness and long-term performance.

Carefully considered in every detail, this exclusive development by Oakwood Group combines innovative building techniques with elegant architecture to create a truly distinctive address in Foxrock.

External Features – Designed to Impress

Each home is thoughtfully designed to complement its surroundings while delivering a striking contemporary finish.

- Elegant façades combining stained hardwood, painted render and granite detailing.
- NorDan alu-clad windows maximise natural light while enhancing energy efficiency.
- Gabled pitched roof covered in red clay tiles, paying homage to the characteristic style of the Edwardian period, synonymous with historic Foxrock.
- Private rear gardens with granite patios, slatted fencing and ambient landscape lighting.
- Professionally designed landscaping by Gannon Associates, featuring mature planting and curated green spaces.
- Granite kerbing and Ballylusk driveways.
- Feature exterior lighting has been thoughtfully incorporated to accentuate the architectural character of the home and create a welcoming arrival experience.
- External power for everyday convenience.
- Each home is equipped with an Ohme electric vehicle (EV) charging point.

Energy Efficiency & Comfort – Built for the Future

Sustainability and comfort are at the core of every home within The Colt Collection.

- A-rated BER ensuring excellent energy performance and reduced running costs.
- Heat recovery ventilation system (HRV). This heat recovery system is designed for continuous 24-hour exhaust ventilation of

stale moist air from kitchens and bathrooms. As the stale air is extracted, a heat exchanger within the unit transfers up to 90% of the heat into the fresh air supply entering the lounge and the bedrooms. This process saves 90% of the energy that would be otherwise lost.

- A-rated air-to-water heat pump system from leading brand Samsung by Joule, offering exceptional energy efficiency, reliability and year-round comfort.
- Zoned heating for personalised comfort throughout the home.
- Underfloor heating at ground level with radiators to upper floors.
- High-performance insulation and enhanced airtightness exceeding regulations.
- Energy-efficient LED lighting throughout.

Interiors – Crafted for Modern Living

Designed by Elk House Interiors, each home balances elegance with functionality, creating spaces that are both beautiful and practical.

- Generous 2.7m ceiling heights at ground floor level, enhancing light and space.
- A refined palette of neutral tones, carefully selected to complement architectural details.
- Moulded panel doors with coordinated skirtings and architraves, finished in brass ironmongery.
- Contemporary Crittall-style doors adding light and definition between living spaces.
- Bespoke handcrafted string cut staircase, adding warmth and character.

- Smooth skimmed walls and ceilings for a flawless finish.
- Concrete ground floors for enhanced insulation and acoustic performance.
- Cleverly designed eaves storage within the insulated envelope.

Kitchen – The Heart of the Home

Beautifully designed and expertly crafted, the kitchens combine timeless style with premium functionality.

- Bespoke hand-painted kitchens by Michael Cox Furniture with brass detailing.
- Calacatta Gold worktops with full-height matching splashbacks.
- Premium appliances including cooker, hob, combi oven, dishwasher, fridge, freezer, wine cooler, washing machine and dryer.
- Large kitchen island providing additional workspace and informal seating.
- Integrated storage solutions including multi-bin system.
- Quooker tap delivering instant boiling water for everyday ease.

Utility & Boot Room – Everyday Practicality

- Dedicated utility room with fitted cabinetry, sink and tiled splashback
- Plumbed for raised washing machine and tumble dryer.*

*Where applicable

Bathrooms – A Luxurious Retreat

Bathrooms are designed to offer a calm, spa-like experience with high-quality finishes throughout.

- Elegant Duravit sanitary ware in all bathrooms and en-suites
- Built-in niches with integrated lighting for added style and convenience.
- Pressurised showers with rain head fittings and sleek slimline enclosures.
- Contemporary fittings in nickel and gunmetal finishes.
- Heated towel rails as standard.
- Freestanding bathtubs in selected homes.
- Large-format porcelain tiling to floors and wet areas.

- **Bedrooms & Storage – Thoughtfully Designed**
- High-quality fitted wardrobes by Michael Cox Furniture in all bedrooms.
- Luxurious walk-in wardrobe to the primary suite
- Smart internal layouts including shelving and drawers.
- Seamless handleless finishes with oak-lined interiors.

Lighting & Electrical – Smart and Sophisticated

- Carefully considered lighting design combining feature pendants and recessed downlights
- Matt Bronze-finish sockets and switches throughout.
- USB charging points in key areas including kitchen and bedrooms.
- Provision for multiple TV and broadband providers.
- CAT 6 cabling for high-speed connectivity and smart home integration.

Security & Peace of Mind

- Pre-wired for alarm and CCTV systems.
- Automated electric entrance gates with intercom access.
- Comprehensive smoke, heat and carbon monoxide detection.
- Complete Ubiquiti networking throughout the property, comprising wired network infrastructure, Wi-Fi access points for whole-home coverage, and a Ubiquiti video intercom at the gate with mobile call forwarding capability.

Warranty

Each home is covered by HomeBond for complete peace of mind:

- 10-year structural guarantee.
- 5-year defects cover.

Interior Designer:

By Elk House Interiors.

Landscape Designer:

By Gannon + Associates Landscape Architecture.



About Your Developer

Oakwood Group is a family-run development company dedicated exclusively to building high-quality, A-rated homes that combine cutting-edge energy efficiency with design excellence. Specialising in boutique developments, Oakwood takes a highly focused approach, ensuring each home receives meticulous attention to detail from concept to completion. With an unwavering commitment to craftsmanship, Oakwood homes are built using premium materials and the expertise of skilled tradesmen. Every element, from structural design to final finishes, is thoughtfully considered and executed to the highest standard, creating homes that are not only beautiful but built to last.

Combining exceptional craftsmanship with advanced construction techniques, Oakwood Group creates beautifully designed, expertly finished homes engineered for outstanding performance. The result is exceptional comfort, enduring quality and contemporary design, tailored to modern living.



MOUNT MERRION



MONKSTOWN



DUNDRUM



THE COLT COLLECTION

TORQUAY ROAD - GOLF LANE
FOXROCK | DUBLIN 18

SELLING AGENT



(01) 491 2600

Milltown House
Mount Saint Anne's
Milltown, Dublin 6

PSRA No. 004017

A DEVELOPMENT BY



OAKWOOD
GROUP

www.thecoltcollection.ie

DNG Group Ltd, for themselves and for the vendors Oakwood Group or lessors of the property, whose agents they are, give notice that: (i) These particulars are provided as a general outline for the guidance of prospective purchasers or lessees and do not constitute part of any offer or contract. (ii) All descriptions, dimensions, references to condition, permissions for use and occupation, and other details are given in good faith and are believed to be correct. However, any intending purchasers or tenants should not rely on them as statements or representations of fact and must satisfy themselves by inspection or otherwise as to their accuracy. (iii) No person in the employment of DNG Group Ltd has any authority to make or give any representation or warranty whatsoever in relation to this development.

