

Mason Owen & Lyons

Commercial Property Consultants



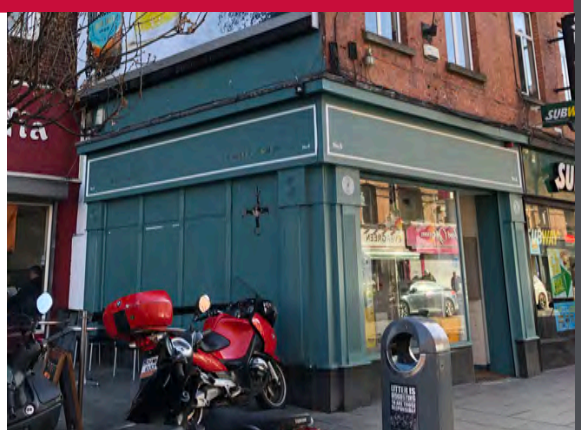
SHORT TERM LEASE

RETAIL UNIT

6 WEXFORD STREET, DUBLIN 2



- High Profile Retail Premises
- Separate Access
- Dual Frontage
- Shop 58.72 sq. m. / 632 sq. ft.



01 66 11 333

TO LET

www.mol.ie

SHOP TO LET
6 WEXFORD STREET, DUBLIN 2

LOCATION

The property is located in a high profile position on the east side of Wexford Street, just south of its junction with Cuffe Street, Kevin Street & Aungier Street, and is a short distance from St Stephen's Green.

DESCRIPTION

6 Wexford Street is of modern construction behind a period brick facade. The ground floor comprises a retail shop with glazed timber framed shop front.

Toilet accommodation is provided in the staff breakout space to the rear.

The building is air conditioned through out.

LETTING AGENTS

For further information or viewing arrangements please contact:

Mason Owen & Lyons
Harry Byrne - hbyrne@mol.ie
Tel: 01 - 66 11 333

**Mason Owen
& Lyons**
Commercial Property Consultants

ACCOMMODATION

Ground	58.72 sq.m.	632 sq.ft.
--------	-------------	------------

All intending tenants are specifically advised to verify the floor areas and undertake their own due diligence.

TERMS

The shop is available on a short term lease / licence - suitable for a pop-up store. MOL are asking €3,500 per month for the retail space.

RATES 2020:

Shop - c. €5,000

Building Energy Rating:

Shop - 



**Mason Owen
& Lyons**

Commercial Property Consultants

PSR Licence No. 001281

134/135 Lr. Baggot Street
Dublin 2
info@mol.ie . www.mol.ie

01 66 11 333