

Commercial

Coonan
PROPERTY



International Apartments, Station Road, Bray, Co. Wicklow

Prime Multi-Unit Residential & Retail Investment Opportunity

Coonan Property is pleased to present International Apartments, a landmark multi-unit residential development extending to 9,648 sq.ft (897 sq.m) over five storeys.

Completed in 2025 by McEleney Homes, the property has been finished to an exceptional standard and comprises:

- 12 high-quality residential apartments
- 2 ground-floor retail units
- To be sold in its entirety as a single investment block

Ideally positioned in a prime town-centre location directly opposite Bray Train Station, the property offers unrivalled convenience for both residents and commercial occupiers. Bray's famous promenade and Strand Road are just a short walk away.

Most apartments benefit from full sea views from generously sized balconies.

12 Apartments and
2 Retail Units
extending to 9,648
sq.ft (897 sq.m)

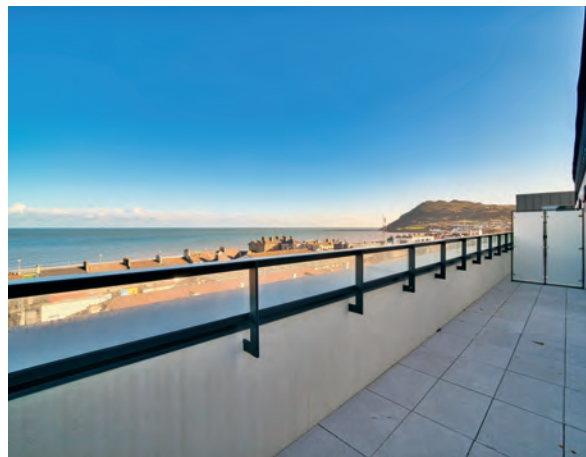
Guide Price:
POA

Private Treaty

Investment Highlights

Coonan
PROPERTY

- Landmark newly completed (2025) block in an established commuter town
- Strong rental demand driven by proximity to transport, coastline, employment and amenities
- High footfall retail location directly opposite Bray Train Station
- Exceptional energy efficiency across residential units (A-rated BER)
- Fully completed turnkey block ready for immediate letting or sale
- Rare opportunity to acquire a complete high-quality residential/retail building in Bray town centre



Investment Highlights

Coonan
PROPERTY



Location

Coonan
PROPERTY

The property occupies a prominent position on Station Road, immediately adjacent to Bray Train & DART Station and approximately 900 metres from Bray Town Centre.

Bray is a thriving coastal town in North Co. Wicklow, approximately 20 km south of Dublin City Centre. With a 2022 census population of 33,512, Bray is Ireland's tenth-largest urban area.

The town benefits from strong employment, amenities, and tourism drivers, including:

- Ardmore Studios
- Multiple retail and business parks
- Extensive hospitality, leisure, and outdoor amenities

Transport Connectivity:

Bray offers exceptional commuter links via:

- DART & mainline rail services
- Dublin Bus
- M11 & M50 motorways
- Rapid access to Dublin City Centre and South Dublin employment zones



Location

Coonan
PROPERTY



Accommodation Summary

Coonan
PROPERTY

Residential Units:

- 10 × 1-bed apartments (47–52 sq.m)
- 1 × 2-bed apartment (76 sq.m)
- 1 × 3-bed apartment (102 sq.m)

All apartments are completed to an exceptional specification, including:

- Minimum A3 BER rating
- Air-to-water heat-pump systems
- Fully painted interiors
- Contemporary fitted kitchens

Retail Units

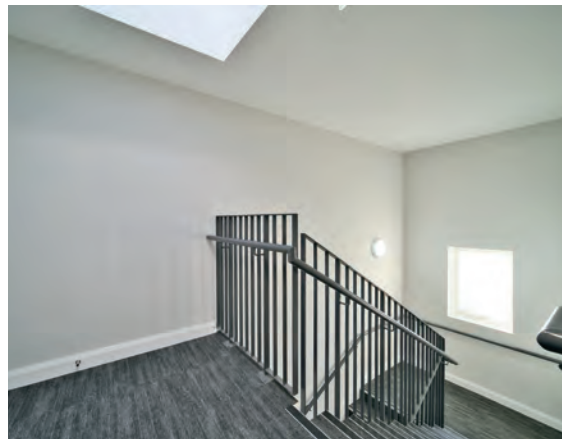
- Unit 1: 63 sq.m
- Unit 2: 66 sq.m
- Both units benefit from high visibility and heavy footfall generated by the adjacent train station.

Building Features:

- Lift access to all floors
- Secure bin storage
- Bicycle storage
- Contemporary entrance lobby

Services:

All mains services connected.



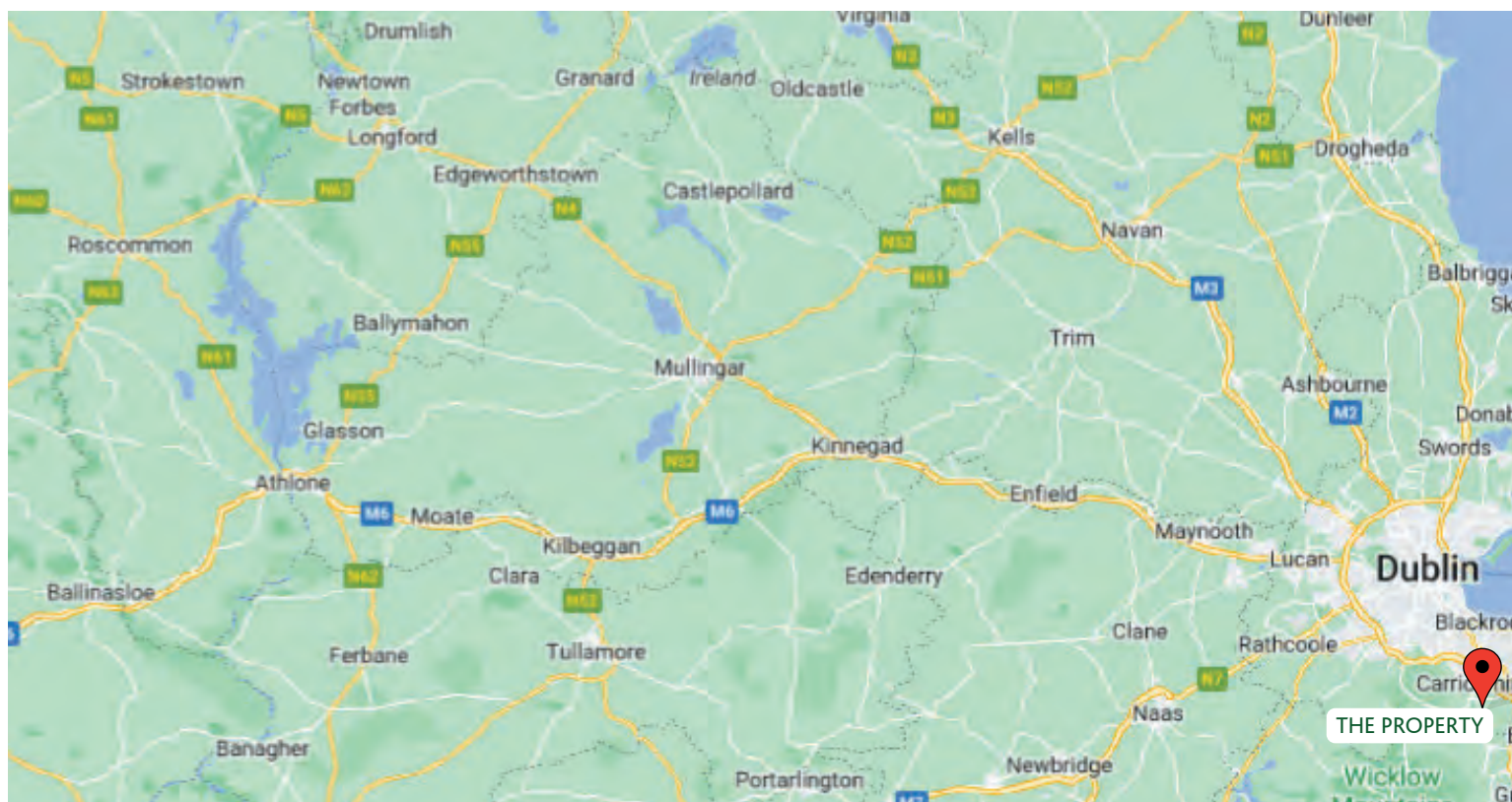
Accommodation Summary

Coonan
PROPERTY



Directions

Coonan
PROPERTY



BER

BER A2

BER A3

Viewing

By appointment only.

Coonan
PROPERTY

Contact:

Mick Wright

T: 01 628 8400

E: mickw@coonan.com

PSRA No.: 003764.

The above particulars are issued by Coonan Property on the understanding that all negotiations are conducted through them. Every care is taken in preparing particulars which are issued for guidance only and the firm does not hold themselves responsible for any inaccuracies. All reasonable offers will be submitted to the vendors for consideration but the contents of this brochure shall not be deemed to form the basis of any contract subsequently entered into. The vendor or lessor do not make, give or imply nor is Coonan Property or its staff authorised to make, give or imply any representation or warranty whatsoever in respect of this property.