



FOR SALE | TO LET

High-Bay Warehouse
with Offices

Approx. 3,514.3 sq m
(37,828 sq ft)

Site of Approx. 1.1
Hectares (2.6 Acres)

- ➔ High Profile Unit Adjoining the M50 Orbital Motorway
- ➔ Access Controlled And Secure Business Park Environment
- ➔ Only Minutes From Airport, Port Tunnel, M50 And M1 Motorways
- ➔ Adjoining Quality Bus Corridor giving high frequency access to surrounding areas and City Centre
- ➔ Market Leading Sustainability Features
- ➔ Extensive secure yard facility
- ➔ Available within 12 months



NORTH City BUSINESS PARK

FINGLAS | DUBLIN 11

UNIT A9

LOCATION

North City Business Park is a high quality development fronting the M50 motorway in one of Dublin's most accessible commercial locations. North City Business Park is strategically located at M50 Junction 5 (where it intersects with the North Road/N2). It adjoins key centres of employment and amenities including Charlestown Shopping Centre. With immediate access to the M50 Motorway, the park benefits from rapid motorway access to all of the main arterial routes to and from the city centre, to the Port Tunnel and to Dublin Airport.

NORTH CITY BUSINESS PARK

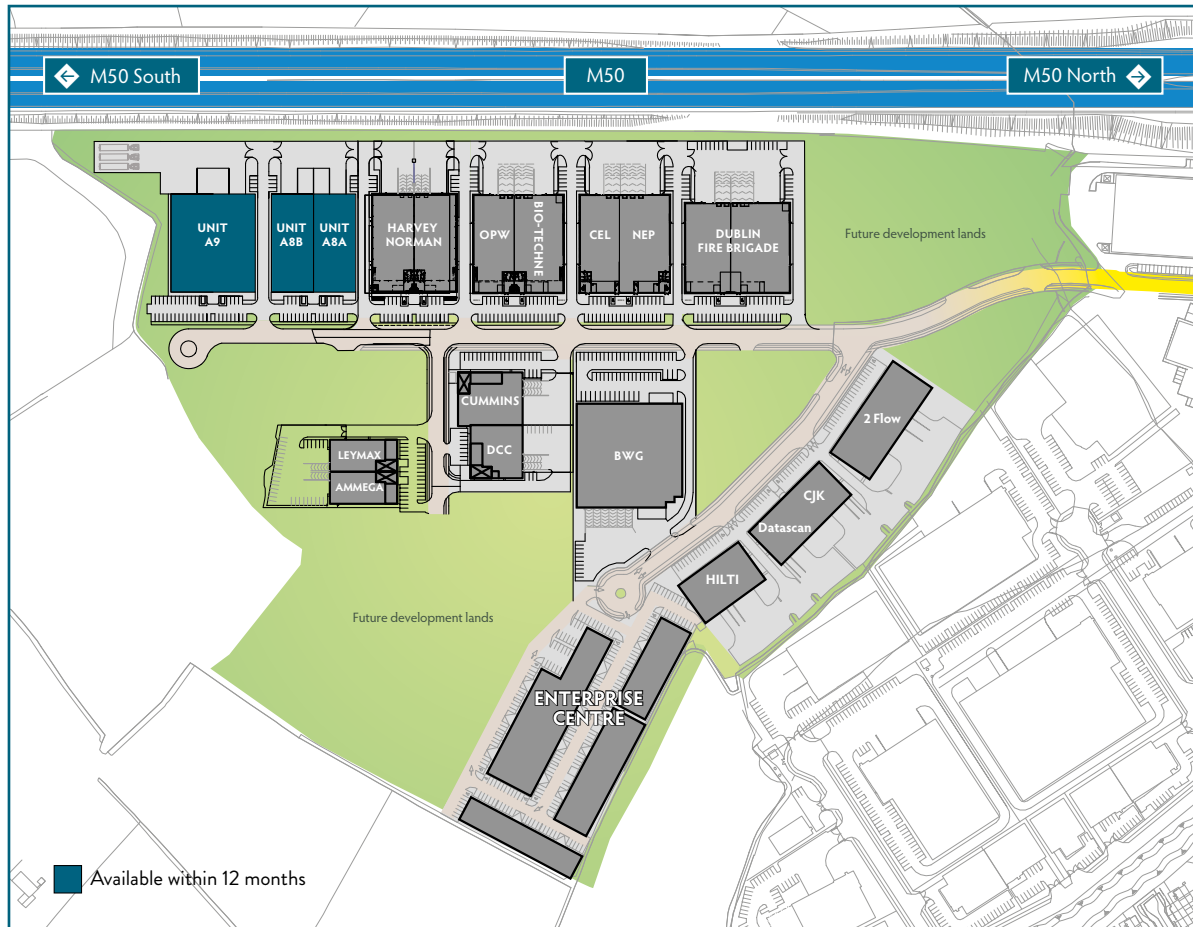
- ➔ has immediate access to the M50/M2 motorway junction (J5),
- ➔ has frontage of over 200 metres directly onto the M50,
- ➔ is within 10 minutes' drive time of the Port Tunnel and Dublin Airport,
- ➔ has over 20 acres of industrial land available for development.



ENVIRONMENT & SUSTAINABILITY

With a focus on sustainability being a key driver for Rohan as a developer and long term investor, this property is targeting LEED Gold sustainability accreditation. The planned specification of the property includes:

- ➔ Electric vehicle charging
- ➔ Rainwater harvesting
- ➔ LED lighting
- ➔ Low flow WCs
- ➔ Heat pumps
- ➔ PV power generation (subject to planning)



SPECIFICATIONS/FEATURES

(in addition to features outlined on Page 2)

GENERAL

- ⊕ LEED Gold targeted.
- ⊕ 12m clear internal height.
- ⊕ Steel portal frame construction.
- ⊕ Extensive secure service yard with depth of approx. 33 metres with additional storage area / truck parking area.
- ⊕ 4 dock levellers with tailgate loading.
- ⊕ 2 roller shutter doors.
- ⊕ 60kn/m² floor loading.
- ⊕ 2.4 metre high wall to inside of external cladding wall.
- ⊕ Electric vehicle (EV) charging.
- ⊕ Electrical distribution centre designed for three phase electrical supply and CT metering.
- ⊕ High quality actively managed estate.

OFFICES / AMENITIES

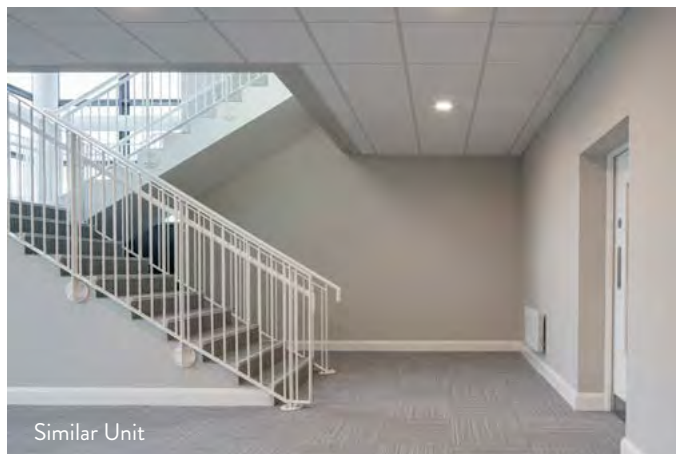
- ⊕ Feature reception area.
- ⊕ Open plan design suitable for compartmentation.
- ⊕ Shower and staff changing facilities at ground and first floor.
- ⊕ VRF air conditioning.
- ⊕ Suspended acoustic tiled ceilings with LED lighting.
- ⊕ Painted and plastered walls.
- ⊕ Fully fitted toilets and tea station facilities.
- ⊕ Perimeter trunking.
- ⊕ Fully bonded heavy contact carpet to offices, reception and main stairs.

ACCOMMODATION

APPROXIMATE GROSS EXTERNAL FLOOR AREAS

Units A9	Sq M	Sq Ft
Warehouse	3,160	34,014
Offices	354.3	3,814
Total	3,514.3	37,828

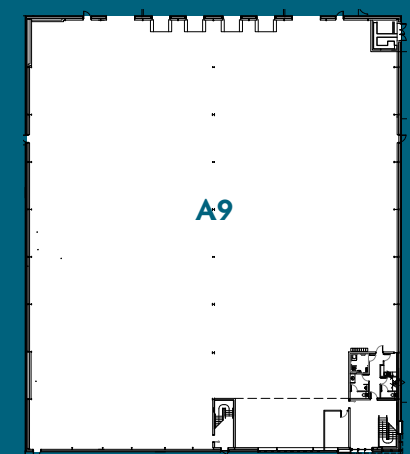
Site area of approx. 1.1 Hectares (2.6 Acres)



Similar Unit



Similar Unit





NORTH City BUSINESS PARK
FINGLAS | DUBLIN 11

UNIT A9



JOIN LEADING OCCUPIERS INCLUDING:



www.rohanholdings.ie



This project is registered with the certification goal of LEED Gold. LEED (Leadership in Energy and Environmental Design) is a voluntary rating system to certify sustainable buildings and neighbourhoods.



Rohan Holdings is a proud member of the Irish Green Building Council. The IGBC is a non-profit organisation, launched in 2011 with member organisations and businesses from the entire value chain of the built environment. All are united in one common goal to accelerate the transformation of the built environment, related industry and supply chain to one that is sustainable through leadership, research, education and providing policy input to local and national government.

For more information, visit www.igbc.ie



TERMS
Available upon request.

TARGETED BER
BER A3

RATES
Commercial Rates payable to Fingal County Council.

OTHER OUTGOINGS
Available upon request.

CONTACT



Styne House
Upper Hatch Street
Dublin 2, Ireland.
www.jll.ie

+353 (0)1 673 1600
info@jll.ie

Contact:
CATHAL MORLEY
cathal.morley@jll.ie



4th Floor, Block 2,
Harcourt Centre, Harcourt Street,
Dublin 2, Ireland.
www.rohanholdings.ie

+353 (0)1 662 4455
info@rohanholdings.ie

Contact:
JOHN CASEY
jcasey@rohanholdings.ie

JLL PSRA Licence No. 002273 | Rohan PSRA Licence No.003550

The particulars and information contained in this brochure are issued by Jones Lang LaSalle on the understanding that all the negotiations are conducted through them. Whilst every care has been taken in the preparation of the particulars and information they do not constitute an invitation to treat, an offer or a contract of any nature whether express or implied. All descriptions, dimensions, maps, plans, artists' impressions, references to condition, permissions or licences of use or occupation, access and other details are for guidance only and may be subject to change, without prior notification. The particulars and information are given in good faith but no intending purchaser/tenant should rely on them as statements or representations of fact and is specifically advised to undertake its own due diligence (at its own expense) to satisfy itself as to the accuracy and/or correctness of the particulars and information given. None of Jones Lang LaSalle, its employees, agents or affiliate companies, makes any warranty or representations whether express or implied with respect to the particulars and/or information and which are to the fullest extent permitted by law, disclaimed; furthermore, such parties accept no liability in respect of any loss suffered by any intending purchaser/tenant or any third party arising out of the particulars or information. Prices are quoted exclusive of applicable taxes such as VAT (unless otherwise stated) and all negotiations are conducted on the basis that the purchaser/lessee shall be liable for any applicable taxes or VAT arising out of the transaction.