



33 Newtown Manor, Castletroy, Limerick



Guide Price

€445,000



GVM Auctioneers bring to the market 33 Newtown Meadows, a superb three-bedroom semi-detached residence situated in the heart of the ever-popular Monaleen/Castletroy area. This property is located in one of Limerick's most established and desirable residential locations, offering the perfect balance of convenience, connectivity, and family-friendly living.



This attractive home is ideally positioned just minutes from a whole host of amenities, including the renowned University of Limerick, Plassey Technological Park, Castletroy Shopping Centre, excellent primary and secondary schools, sporting facilities, scenic riverside walks, and an extensive range of cafés, restaurants, and leisure amenities.



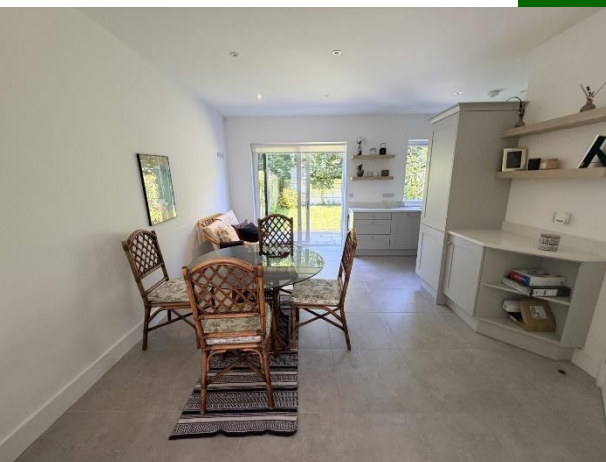
Castletroy continues to be one of Limerick's strongest residential markets, driven by exceptional employment opportunities, educational facilities, and outstanding quality of life. Residents of Newtown Manor benefit from easy access to the M7 motorway network, making commuting to Limerick City Centre, Shannon, Dublin, and beyond both convenient and efficient.



The property itself offers bright, well-proportioned accommodation with three bedrooms, generous living space, private rear gardens, and off-street parking, providing an ideal setting for modern family living.

It boasts a very efficient A2 Energy rating allowing occupiers to benefit from green mortgages and low running costs. The property benefits from under floor heating on the ground floor.

Whether you are seeking your first home, a family residence in a prime suburban location, or a strong investment opportunity, 33 Newtown Manor represents a rare chance to acquire a property in one of Limerick's most sought-after and consistently high performing residential areas.



Rooms:

Entrance Hall Tiled flooring. Under stairs storage.

4.05m (13'3") x 2m (6'7")

Living Room Laminated Flooring. False Chimney breast, with wiring for electric fire and TV insert. Pocket doors leading to the kitchen dining area.

4.04m (13'3") x 3.07m (10'1")

Kitchen/Dining room Open plan kitchen/dining room.

Tiled flooring. Generous eye and floor level shaker style presses. Solid counter top. Intergrated appliances.



Recessed lighting. Double doors leading to sun drenched rear garden 5.06m (16'7") x 5.01m (16'5")

Guest WC Tiled flooring. Recessed mirror. Hidden cisterns. High quality Sanitary wear.

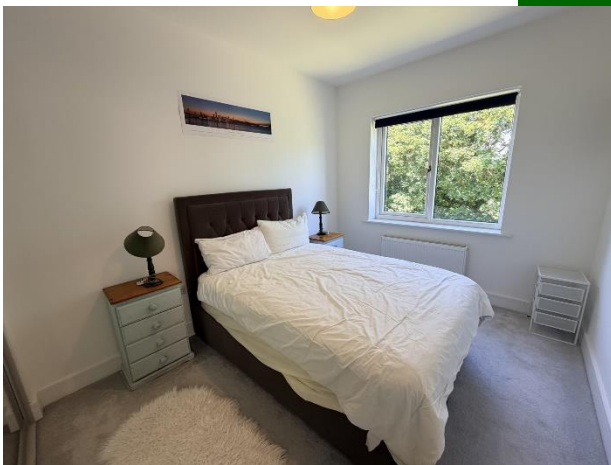
Bedroom 1 Single. Carpet flooring
2.05m (6'9") x 2.04m (6'8")



Bedroom 2 Double. Carpet flooring. Built in wardrobes. 2.02m (6'8") x 4m (13'1")

Master Bedroom Double room. Carpet flooring,
Walk in Wardrobe En-Suite (1.3 x 2.0)
3.04m (10'0") x 4m (13'1")

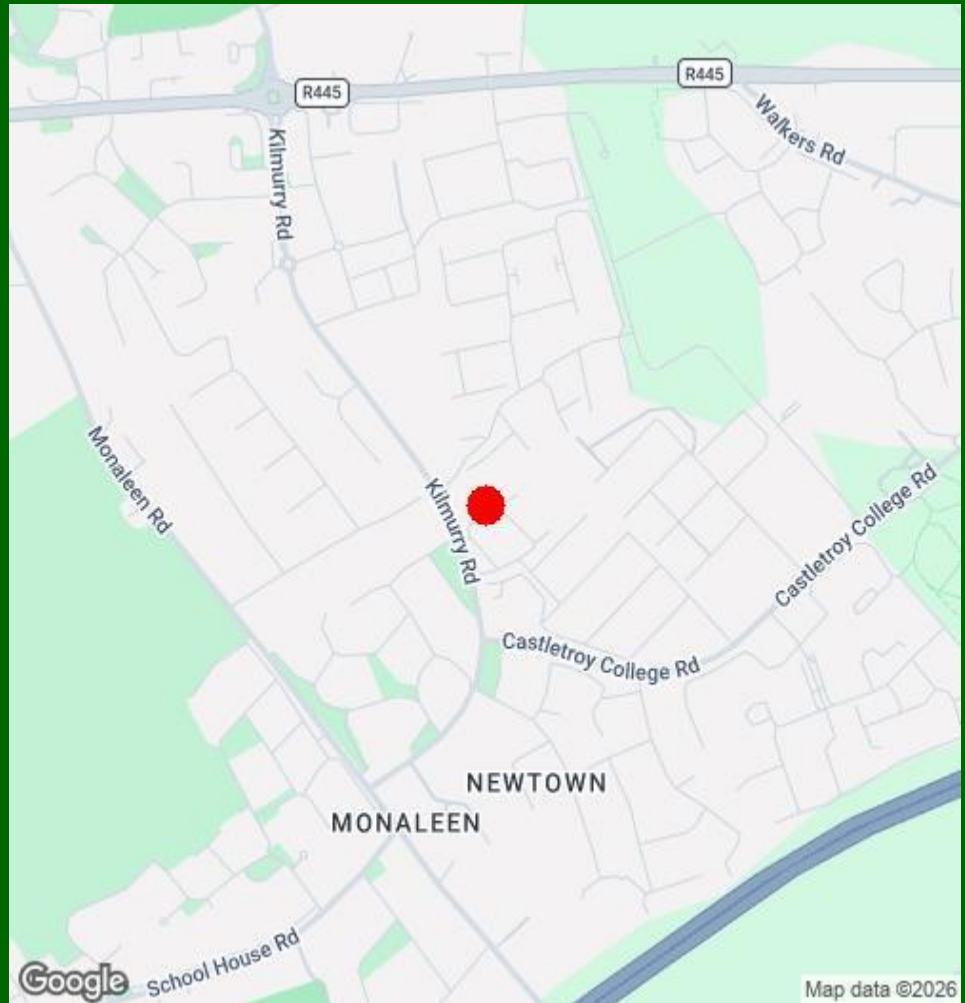
Main Bathroom Tiled flooring. Recessed mirrors.
Hidden cisterns. High quality Sanitary wear.
2.04m (6'8") x 2m (6'7")



Features:

- A2 Energy rating
- EV Charging point
- Bright and spacious living accommodation
- Private rear garden
- Air to water heating system
- Shaker style kitchen with solid counter top
- High quality finished
- Cobblelock driveway
- Built in 2021
- Walking distance to University of Limerick and Plassey Technological Park





Agent Information:

Contact :- Paul Crosse

Mobile :- 087-2026886

Email :- paulcrosse@gvm.ie

Disclaimer

These particulars do not form any contract and are for guidance purposes only. Computer generated images, maps and plans are not drawn to scale and measurements are approximate and for guidance only. Intending purchasers must satisfy themselves as to the accuracy of detail given to them verbally or as part of this brochure. Such information is given in good faith and believed to be correct. However neither the vendor nor their agents shall be held liable for any inaccuracies therein.

Limerick Office

25-26 Glentworth St,
Co. Limerick,
V94WE12

Phone: (061)413522

Email: limerick@gvm.ie

Kilmallock Office

Head Office,
Railway Road,
Kilmallock,
Co. Limerick

Phone: (063)98555

Email:
kilmallock@gvm.ie

Tullamore Office

GVM Mart,
Arden Road,
Tullamore,
Co. Offaly

Phone: (057)9321196

Email:
tullamoreproperty@gvm.ie



PSRA Number: 002030