

PRIME DUBLIN CITY CENTRE RETAIL INVESTMENT  
FOR SALE BY PRIVATE TREATY • TENANT NOT AFFECTED



HENRY STREET, DUBLIN 1

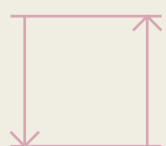




# Investment Highlights



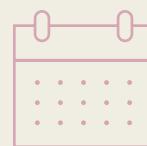
3GPO



Ground floor, basement and mezzanine extending to approximately 139.9 sq m (1,506 sq ft) NIA



Let to Swarovski Ireland Ltd at an annual rent of €150,000 p.a.



Unexpired lease term of c. 2.4 years to expiry



Prime retail location on Henry Street and within 20m of O'Connell Street



Strong covenant, established brand and modern fit-out



# Location



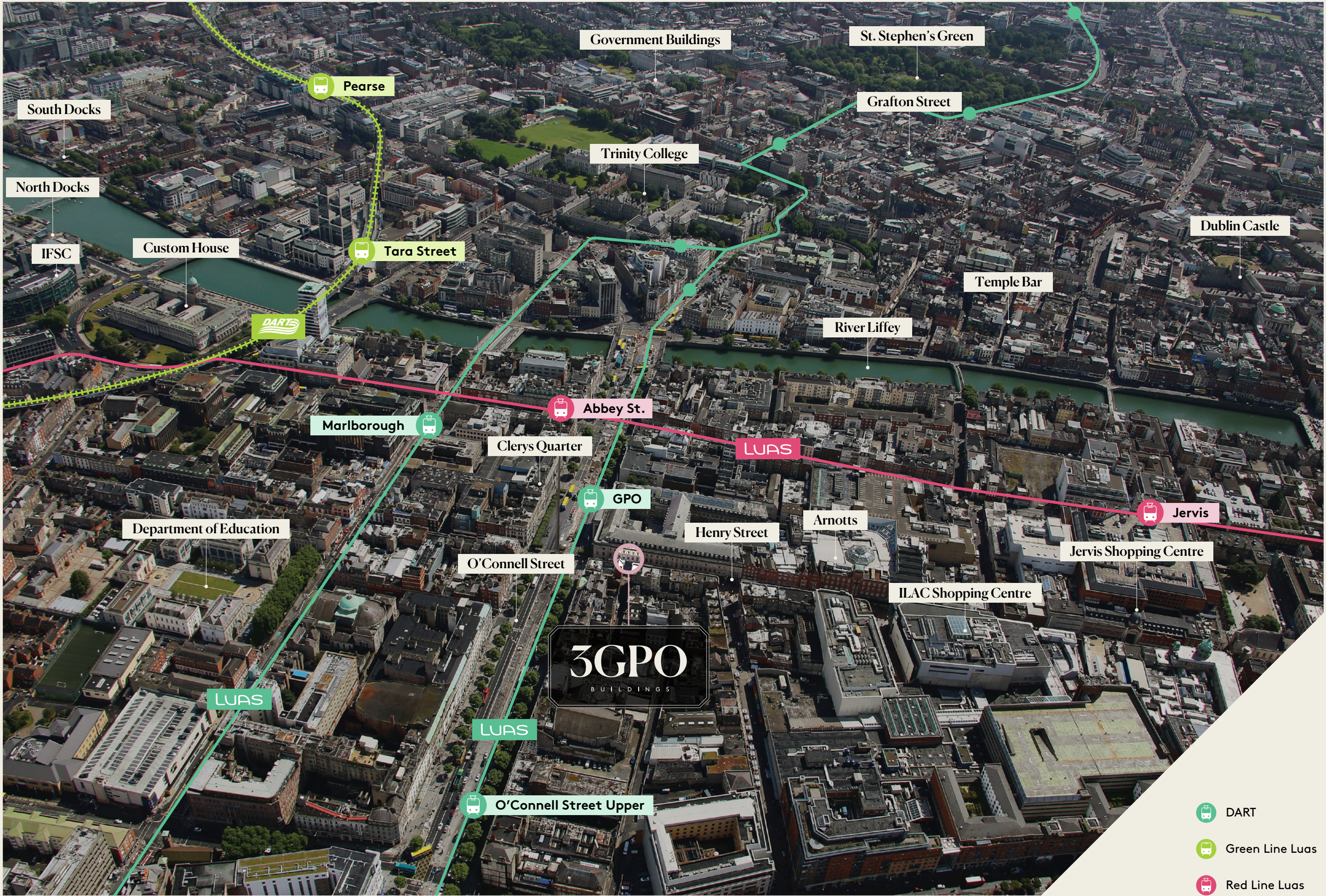
Henry Street occupies a prime position at the heart of Dublin's north-side retail core and is one of the city's two dominant pedestrianised shopping streets, alongside Grafton Street on the south side.




The street benefits from the presence of two major city-centre shopping centres, the Ilac Centre and Jervis Shopping Centre, both of which have undergone significant investment and refurbishment in recent years. Henry Street is home to a strong mix of international fashion, lifestyle and convenience brands. Occupiers include leading high-street retailers such as Zara, Mango, Pull & Bear, JD Sports, Normal, Primark and Stradivarius, alongside established department store anchors including Arnotts, Dunnes Stores and Marks & Spencer.

Beyond retail, Henry Street also functions as a key tourism and transport corridor. The location benefits from excellent public transport connectivity, with the LUAS Red Line and Green Line providing direct access via nearby stops at O'Connell Street, Jervis Street and Abbey Street. Numerous Dublin Bus routes, taxi ranks and Dublin Bike stations further enhance accessibility, while multiple multi-storey car parks are available within the adjoining shopping centres.



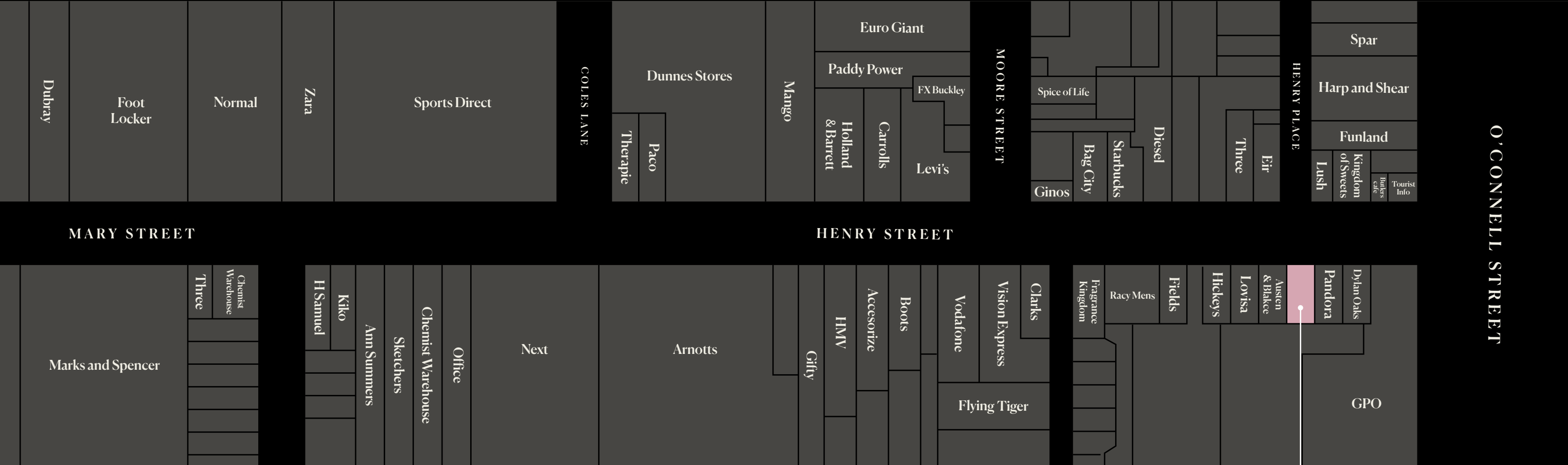




-  DART
-  Green Line Luas
-  Red Line Luas



# Notable Neighbours





# Accommodation

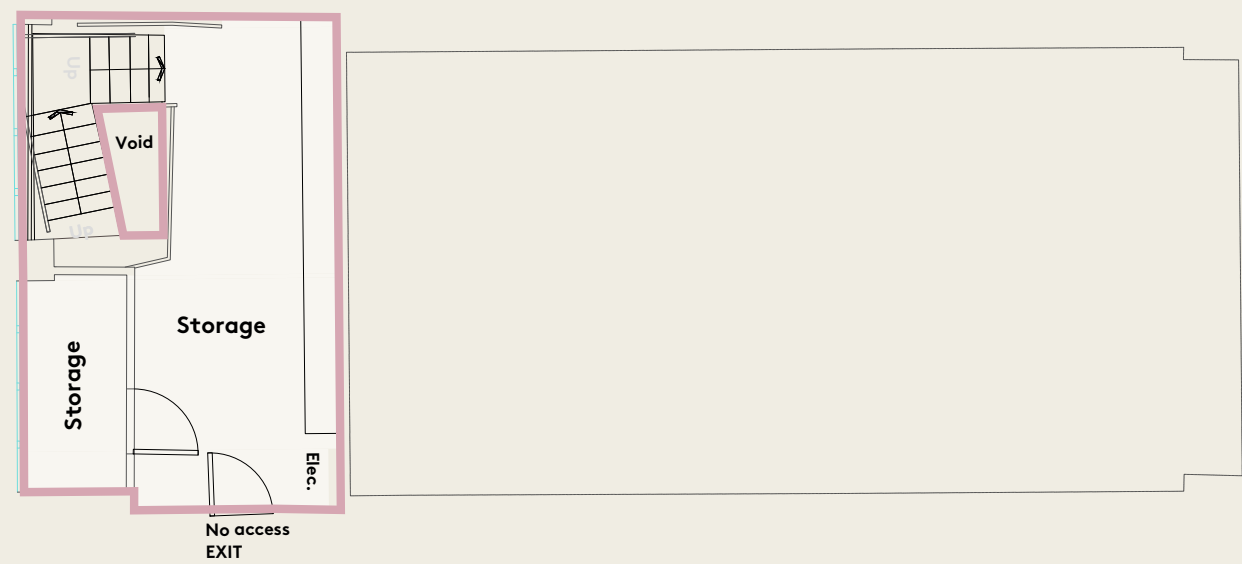


3 GPO comprises an attractive ground floor trading unit with ancillary basement and mezzanine storage, extending to approximately 1,506 sq ft. The property forms part of the iconic historic GPO buildings.

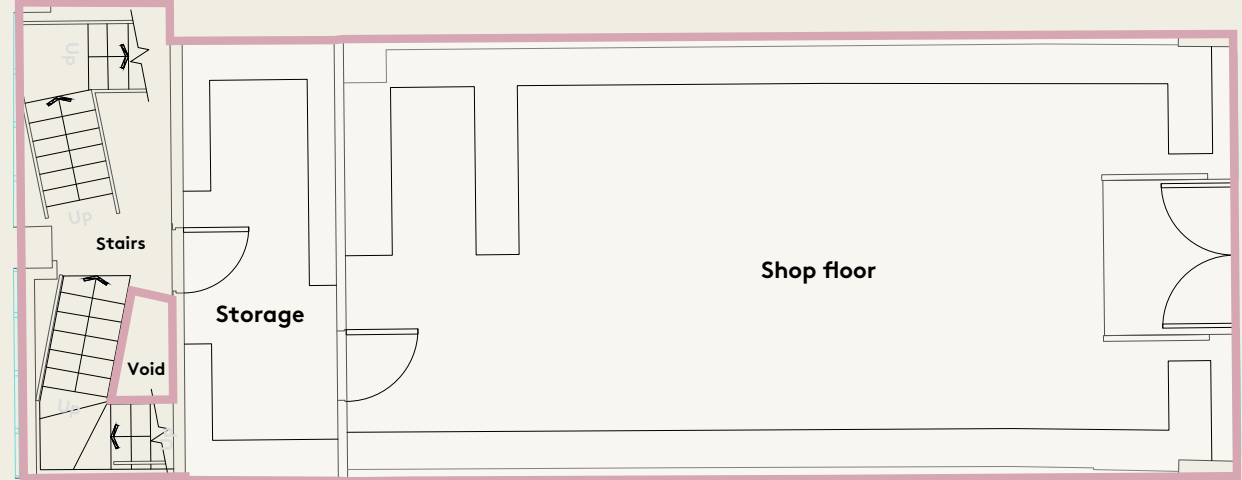
LEVEL	USE	AREA SQ M	AREA SQ FT
Mezzanine Level	Storage	16.1	173
Ground Level	Shop	65.5	705
Basement Level	Storage	58.3	628
Overall Total (NIA)		139.9	1,506



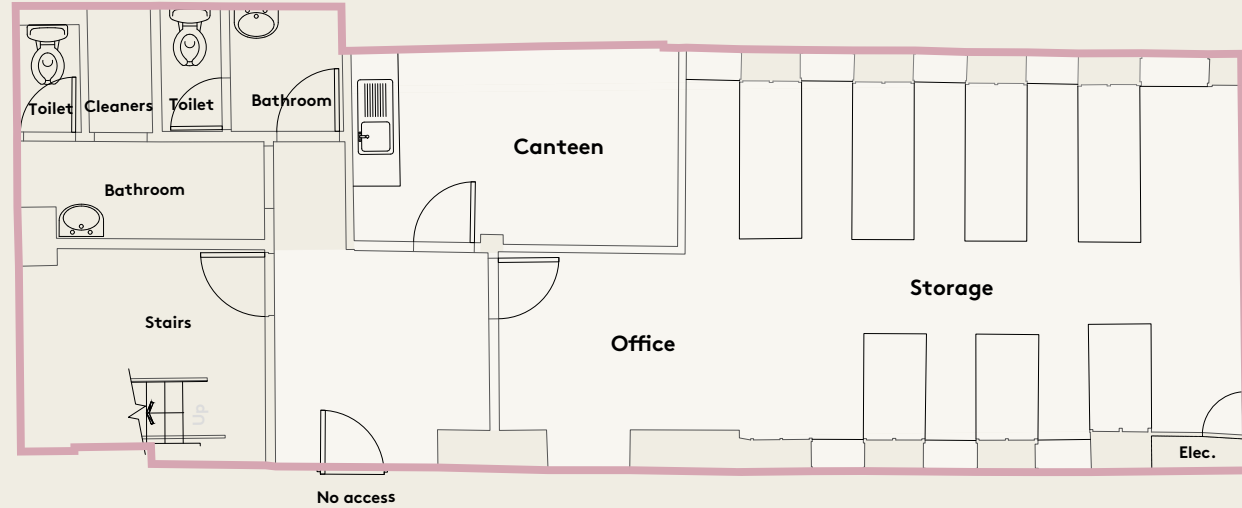
First Level:



Ground Level:



Basement Level:



HENRY STREET



# Tenancy Details

TENANT:	Swarovski Ireland Limited
GUARANTOR:	Swarovski UK Limited
LEASE START DATE:	01/06/2022
LEASE EXPIRY:	31/05/2028
RENT:	€150,000 per annum
DEMISE:	Ground, basement and mezzanine
FLOOR AREA:	1,506 sq ft
RETAIL TRADING AREA:	705 sq ft

\* The Landlord holds a rent deposit of €116,604

## Covenant

### SWAROVSKI

Swarovski is a globally recognised luxury crystal and jewellery brand founded in 1895. The company operates a substantial international retail network spanning over 140 countries. In Ireland, Swarovski has an established and well-located retail footprint across prime city centre, suburban and outlet destinations, including Dublin’s leading shopping streets and Kildare Village.

The strength and stability of the covenant are evidenced by Swarovski’s Dun & Bradstreet rating of 2A2, reflecting solid financial standing and low credit risk.



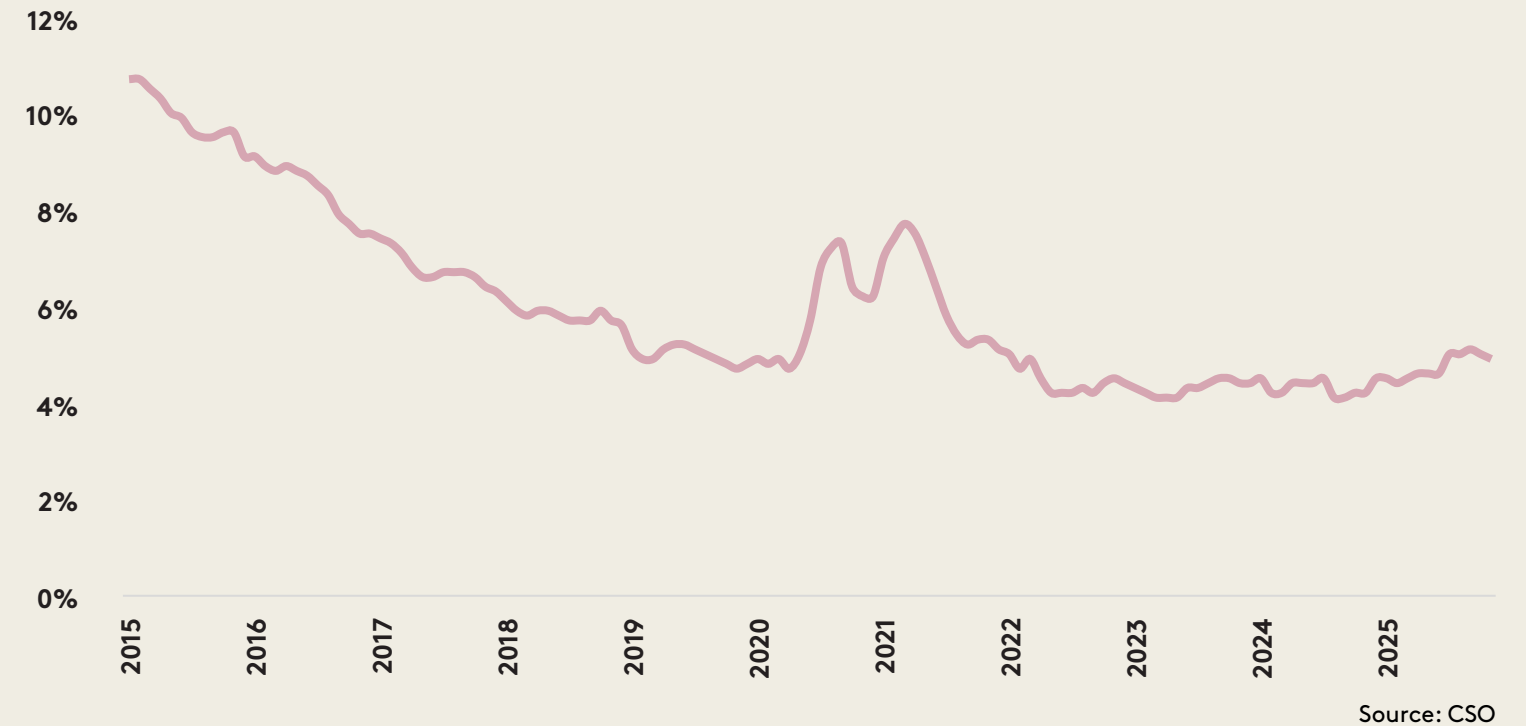


# Market Commentary



The retail economy is underpinned by a strong labour force of 2.8 million people as of Q3 2025, albeit annual growth in the labour force has slowed from 3.7% a year ago to 1.1% in the most recent data. There has also been an uptick in the unemployment rate, which has risen from 4.2% to 4.9% over the past year. That said, it is still just within the rate generally considered to be full employment, when all available labour resources are being utilised. As such, the strong labour force, combined with lower inflation, resulted in real earnings growth of 2.2% y/y in Q3 2025. With a workforce characterised by a young age profile (42% of the population was aged 15-45 as of April 2025), this implies a strong demographic backdrop which is supportive of consumption.

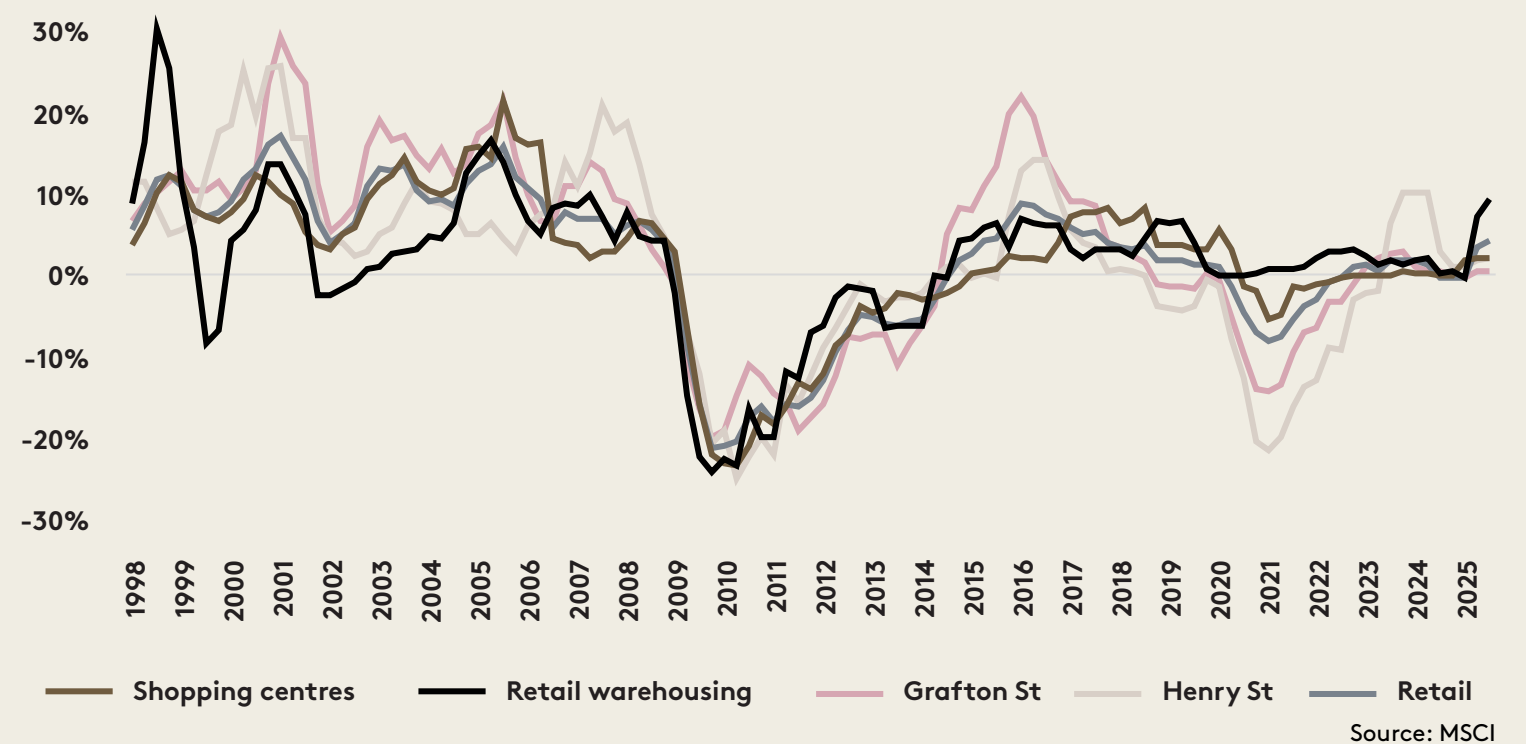
Figure 1: Unemployment rate by month



Retail rents increased by 4.0% y/y in September 2025 across the basket of investment grade shops covered by MSCI. Shopping centres grew by 1.8%, while retail warehousing rose strongly by 9.2%. Furthermore, rents on Henry St increased by 2.0%, while Grafton St rents edged up by 0.2%. Overall, there has been a substantial improvement in retail rents across each subsector over the past year.

The Central Bank of Ireland (CBol) is forecasting consumer spending growth of to 2.2% in 2026, down from an expected 2.9% for full-year 2025. In recent years, consumer spending has been driven by a rapidly expanding labour market with more than 450,000 jobs added to the Irish economy since the beginning of 2020. However, employment growth is expected to slow from 2.1% last year to 1.9% and 1.8% in 2026 and 2027 respectively, potentially constraining consumption in the short term. Although the CBol expects real wage growth to remain positive in 2026 at 0.7%, this represents a decline from 2.0% as forecast for 2025, as well as the 2015–2019 average of 1.9%. Overall, moderate consumption growth should be expected across the year as the labour market softens and real wage growth slows.

Figure 2: Annual change in MSCI index – y/y% rent





# Further Information



## Title

The property is held under a long leasehold title from the Minister of Communications. The lease is for a term of 200 years from the 1 June 1990 at a fixed rent of €8,888 payable per annum

## BER



## Viewings

All viewings are to be arranged strictly by prior appointment through Savills as sole selling agent

## Method of Sale

For sale by private treaty

# Contacts



## SELLING AGENT:



savills.ie | PSRA no. 002233

### Seán Ryan McCaffrey

+353 1 618 1383  
+353 87 773 6008  
sean.ryanmccaffrey@savills.ie

### Izzy Agnew

+353 1 618 1476  
+353 86 206 1391  
izzy.agnew@savills.ie

### Jason Breen

+353 1 618 1785  
+353 86 833 9764  
jason.breen@savills.ie

## SOLICITOR:

# McCANN FITZGERALD

### Emily MacNicholas

+353 1 607 1749  
Emily.MacNicholas@mccannfitzgerald.com

Savills, their clients and any joint agents give notice that they are not authorised to make or give any representations or warranties in relation to the property either here or elsewhere, either on their own behalf or on behalf of their client or otherwise. They assume no responsibility for any statement that may be made in these particulars. These particulars do not form part of any offer or contract and must not be relied upon as statements or representations of fact. Any areas, measurements or distances are approximate. The text, images and plans are for guidance only and are not necessarily comprehensive. It should not be assumed that the property has all necessary planning, building regulation or other consents and Savills has not tested any services, equipment, or facilities. Purchasers must satisfy themselves by inspection or otherwise.