


A photograph of a family of three in a bright, modern living room. A woman with reddish-brown hair, wearing a light blue button-down shirt over a yellow top and white pants, sits on a light-colored rug. A young boy in a blue and white striped shirt and brown pants stands on her lap, holding up a large white geometric block. A man with a beard and glasses, wearing a white t-shirt and a blue denim shirt, sits to the right, also holding up the block. The background shows a brown sofa and a large window with white curtains.

Glenview Manor

A place to **belong.**

 Wicklow Town

Welcome to Glenview Manor

Glenview Manor is where modern sophistication meets luxury family living, set amidst the breathtaking natural beauty of Wicklow.

Located just outside the picturesque town of Wicklow, this exclusive enclave features 15 meticulously crafted 4-bedroom homes that exemplify high-end quality with elegantly appointed interiors, premium finishes, and state-of-the-art energy-efficient technology.

Enjoy refined living with effortless access to iconic attractions such as Brittas Bay, Mount Usher Gardens, Powerscourt Waterfall, and Glendalough, as well as the chic boutique villages of Ashford, Delgany, and Greystones. Perfectly situated off the M11 and within easy reach of Dublin City Centre via the M50, Glenview Manor offers an unparalleled blend of exclusivity, connectivity, and a vibrant community, an exquisite haven for discerning families.

Contents

Why choose kdmHomes?....	4
Glenview Manor	8
Accessibility	11
At home in Wicklow	14
High standards	16
At a glance	18
House plans	20
Support for the buyer	28
Contact details	30

A place to **explore.**

Why choose kdmHomes?

Building homes for **generations**.

At kdmHomes, we take pride in delivering quality, energy efficient homes that combine modern style with everyday comfort. With a steadfast commitment to high standards, sustainable construction, and exceptional customer service, we ensure every home exceeds the expectations of today's homeowners.

We believe that a house is more than just bricks and mortar, it is the foundation for a lifetime of memories. Drawing on years of experience, our design journey is a continuous evolution of past learnings and embracing evolving technologies while understanding the needs of our buyers. We always look to the future, crafting homes that are not only built for modern living but are designed for generations to enjoy.



Innovative Design

Contemporary architecture with functional, stylish layouts.



Energy Efficiency

A-rated homes designed for sustainable, low-cost living.



High-Quality Craftsmanship

Built with the finest materials and finishes.



Customer-Focused Approach

We work with buyers at every step to deliver a home they love.



A place to **thrive**.

**Glenview Manor
close to Wicklow
Town**, offers an
outstanding blend of
modern convenience,
community living,
and easy access to
essential amenities.





Wicklow Town
combines the
tranquility of coastal
living with the ease of
city commuting.

Glenview Manor, Wicklow Town

The perfect place to **call home.**

Glenview Manor, Wicklow, offers an outstanding blend of modern convenience, luxurious community living, and easy access to essential amenities. Situated just minutes from the M11 corridor, commuting to Dublin is effortless, while Wicklow itself serves as a gateway to Ireland’s breathtaking natural landscapes—from the majestic Wicklow Mountains and the historic charm of Glendalough to the pristine shores of Brittas Bay.

<p>Prime Location</p> <p>Ideally located just off the M11, ensuring effortless commutes to Dublin and the sunny south east.</p>	<p>Remote work/Strong employment hub</p> <p>Co-working hubs and major employers in pharma, tech, and industry.</p>	<p>Education</p> <p>Primary schools, secondary schools, Montessori, crèches, special education, and remote learning.</p>
<p>Community</p> <p>Family-friendly atmosphere with local clubs and activities.</p>	<p>Retail</p> <p>Local supermarkets, boutiques, artisan shops, and nearby retail hub in Arklow.</p>	<p>Healthcare</p> <p>Access to healthcare services, including GP clinics, pharmacies, and mental health support services.</p>
<p>Outdoors</p> <p>Boasts stunning outdoor amenities, including coastal walks, beaches and mountain trails.</p>	<p>Recreation</p> <p>GAA, soccer, rugby, golf, gyms, watersports, horse riding and hiking trails.</p>	<p>Culture</p> <p>Theatres, live performances, and arts venues accessible in nearby Bray and Greystones.</p>

A place to **have some fun.**



A place to **connect.**

Accessibility

Distances from **Glenview Manor**, Wicklow Town.

Location	Distance (km)	Approx. Travel Time
Dublin city centre		
By car	53.5km	1hr 10min
By train		1hr 30min
Wexford town centre		
By car	90km	1hr
By train		2hr 11min
All other distances by car		
Dublin port	56km	1hr 10min
Dublin airport	76km	1hr 30min
Rosslare harbour	107km	1hr 15min
Brittas Bay	9km	11min
Mount Usher Gardens	7.5km	10min
Powerscourt waterfall & Estate	34km	30min
Glendalough	25km	30min
Delgany town	26km	20min
Greystones town	28.5km	25min
The Murrough	3.7km	8min
Kilmacurragh Botanic Gardens	11.5km	11min
Maghermore beach	5km	6min
Wicklow golf club	3.8km	8min
The Devil's Glen	19km	26min
Wicklow Bowl	4.2km	8min
Wicklow Harbour	3.5km	8min
Wicklow skate park & outdoor gym	6km	10min
Coral Leisure Centre	3.2km	7min
Town centre and retail hub	2.5km	5min
Ashvale Creche	1km	2min
Hillview Community Centre	2km	4min
Little Monkey's Playschool	2.8km	4min
Tesco	3.4km	6min
Gormanstown Driving Range	4.2km	6min
Blainroe Golf Club	6.5km	8min



Wicklow Town offers the perfect blend of modern convenience, rich heritage, and scenic natural beauty, making it an ideal place to live, work, and thrive.

At home in Wicklow.

The perfect blend of **modern convenience**, rich heritage, and scenic natural beauty.

Your Coastal Hometown

With the Irish Sea on one side and the Wicklow Mountains on the other, Wicklow Town offers stunning scenery, a rich heritage, and a strong community spirit, making it a place you're proud to call home.

A nurturing environment

A welcoming community for all stages of life, offering excellent schools, accessible healthcare, and diverse leisure activities, from fitness centres to scenic outdoor trails, ensuring a high quality of life.

A wealth of amenities

Wicklow Town offers a vibrant mix of outdoor adventure, cultural heritage, and family-friendly activities with Murrough Playground, Wicklow SkatePark, and Coral Leisure Centre.

A Lifestyle Like No Other

With Dublin and Wexford Town just short commutes away, Wicklow Town offers the perfect blend of convenience and tranquility, coastal beauty, and a vibrant community, making it an exceptional place to live.

Accessibility & connectivity

Excellent connectivity with the Dublin-Rosslare rail line, frequent bus services including the 133 and 131, Wexford Bus, and Local Link. Residents enjoy easy access to Dublin via the M50 and N11.

Exploring the outdoors

Wicklow Town is perfectly positioned between the Irish Sea and the Wicklow Mountains, offering endless outdoor adventures. Wicklow is a haven for nature lovers and active lifestyles.



For more details on all that Wicklow offers, visit [wicklow.ie](https://www.wicklow.ie).

A place to **relish.**

High standards

Built for Comfort. Designed for Life.

At kdmHomes, every home is created to the highest standards of craftsmanship, efficiency, and style. Glenview Manor is no exception – a collection of A-rated, energy-efficient homes designed for modern living and lasting value.

From the foundation to the finishing touches, every detail has been considered to create a space that is stylish, functional, and built for a lifetime of comfort. Expect bright, welcoming interiors, exceptional build quality, and sustainable technology that works quietly in the background to keep your home warm, efficient, and economical all year round.

Energy & Comfort

- **A-rated energy efficiency** – reduces running costs while delivering year-round comfort.
- **Block-built construction** – superior insulation to minimise heat loss.
- **Underfloor heating** on the ground floor and energy-efficient radiators upstairs.
- **Advanced airtightness** to keep warmth in and draughts out.
- **Aereco Demand-Controlled Ventilation (DCV)** for a continuous supply of fresh air.
- **A-rated Air-to-Water Heat Pump** with smart thermostatic and multi-zone controls.
- **High-performance pipe insulation** for maximum energy conservation.
- **EV charging enabled** for future-ready living.

- **High-performance, double-glazed windows and doors** for insulation, soundproofing, and security.

Interior Finishes

- **Bespoke fitted kitchens** with premium cabinetry and quartz worktops as standard.
- **Fully fitted utility rooms.**
- **Contemporary bathrooms** with premium sanitary ware and high-quality tiling.
- **Master en-suites** with sleek modern fittings.

Smart Home & Electrical

- **Cat 6 cabling** for seamless broadband connectivity.
- **Fibre-to-the-home (FTTH)** enabled.
- **Pre-wired** for intruder alarm for added peace of mind.
- **LED lighting** throughout for energy efficiency.
- **External electrical points** for garden and outdoor use.

Additional Features

- **Attics with light and power** supply. (where applicable)
- **Block-paved driveways** and low-maintenance render & brick façades.
- **Seeded and landscaped gardens** to front and rear.
- **Fully landscaped communal areas** for residents to enjoy.

Glenview Manor offers more than just a place to live – it's a home designed for how you live today and how you want to live tomorrow. With sustainability, quality, and comfort at its core, this is a home that's future-proofed for generations to come.



At a glance

Offering you 4 bedroom homes.

Ardagh
4 Bed Home

4 bed
4 bath

Detached
197.4 sqm | 2125 sqft

Carrick
4 Bed Home

4 bed
4 bath

Detached
197.3 sqm | 2124 sqft

Kilmore
4 Bed Home

4 bed
4 bath

Detached
205.3 sqm | 2210 sqft

Doonan
4 Bed Home

4 bed
4 bath

Detached
183.5 sqm | 1975 sqft

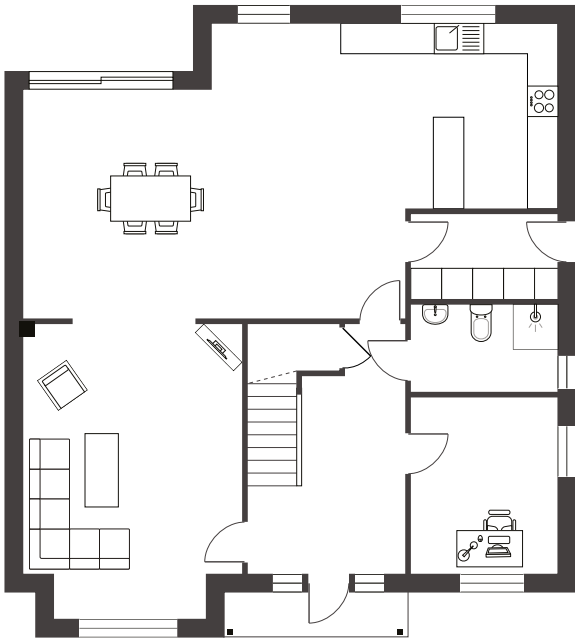


- Ardagh**
4 BEDROOM
Detached
197.4 sqm | 2125 sqft
- Carrick**
4 BEDROOM
Detached
197.3 sqm | 2124 sqft
- Kilmore**
4 BEDROOM
Detached
205.3 sqm | 2210 sqft
- Doonan**
4 BEDROOM
Detached
183.5 sqm | 1975 sqft

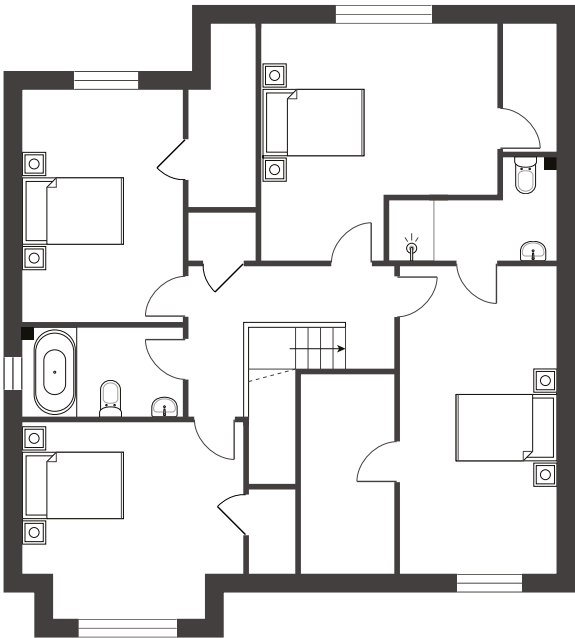
Ardagh

4 Bed
Detached
197.4 sqm | 2125 sqft

Our A-rated, energy-efficient homes are designed to lower utility bills and reduce environmental impact, ensuring that every family enjoys long-term savings while creating a legacy of care for generations to come.



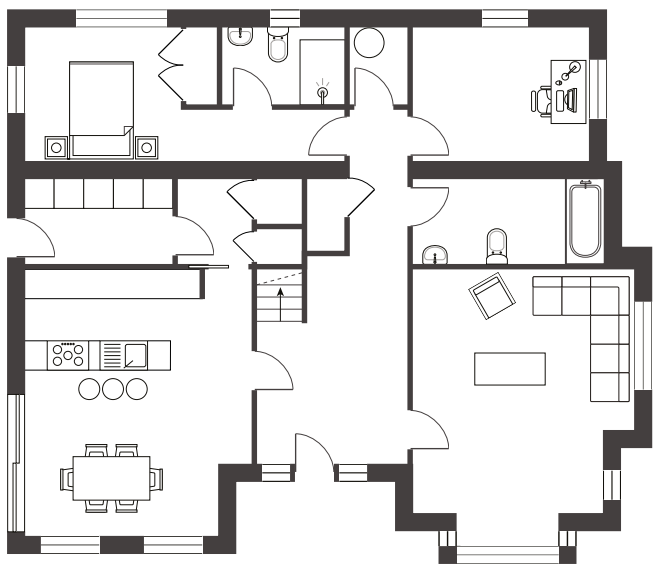
GROUND FLOOR



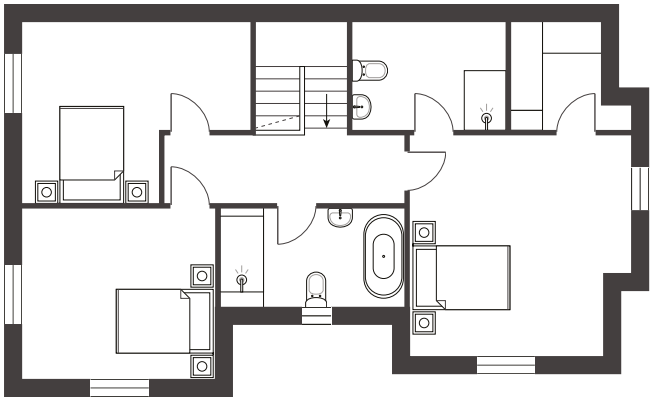
FIRST FLOOR

Carrick

4 Bed
Detached
197.3 sqm | 2124 sqft



GROUND FLOOR

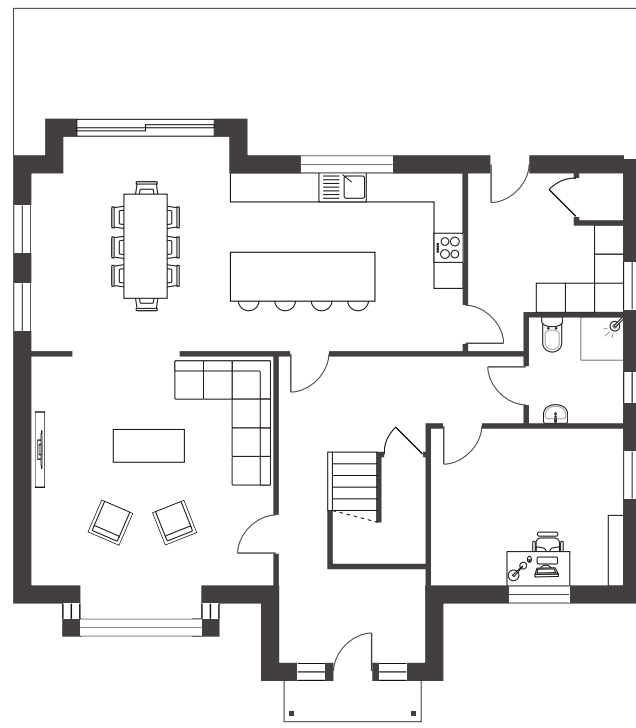


FIRST FLOOR

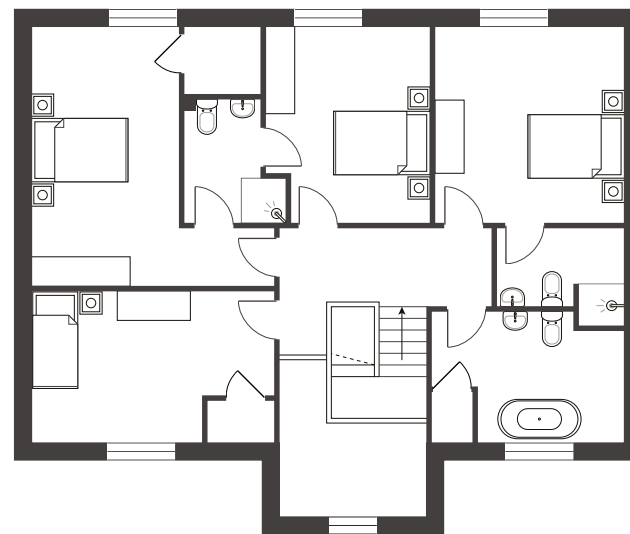
Kilmore

4 Bed
Detached
205.3 sqm | 2210 sqft

With a strong reputation built on expertise, precision, and quality, kdmHomes take pride in **delivering homes that not only meet but exceed expectations**; every project reflects our unwavering commitment to detail, superior materials, and timeless craftsmanship.



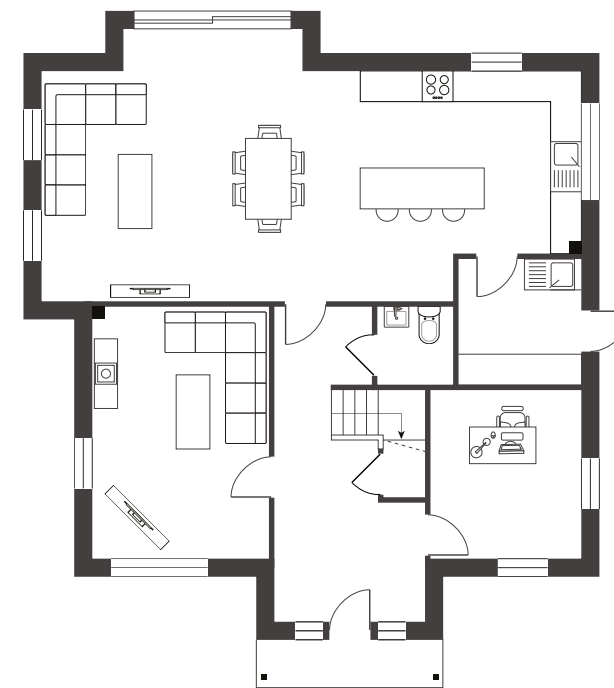
GROUND FLOOR



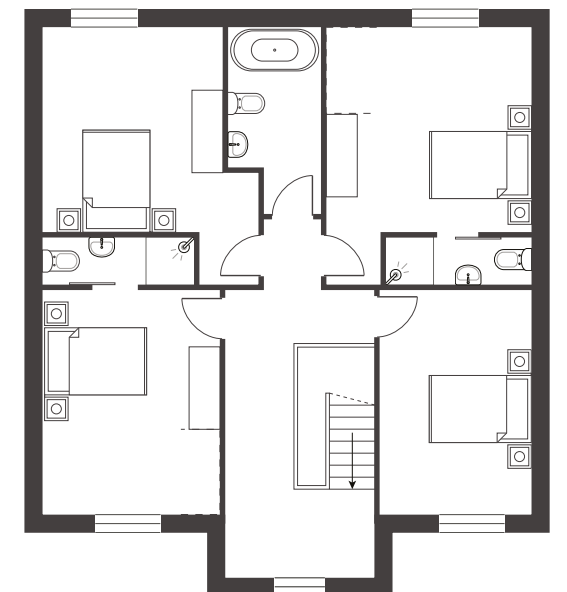
FIRST FLOOR

Doonan

4 Bed
Detached
183.5 sqm | 1975 sqft



GROUND FLOOR



FIRST FLOOR





Glenview Manor offers homeowners a space designed for modern family life, whether you're a first-time buyer, growing family, or looking to downsize, this development provides a home that adapts to your needs, now and into the future.

Click on the link below and a member of our team will be in touch.

Register your interest here

Selling Agent:
Dillion Marshall Property
Consultants
e: **Glenviewmanor@dmpc.ie**
t: +353 1 496 7574



Click on the link below and a member of our team will be in touch.

Register your interest here

Selling Agent:
SherryFitzgerald Wicklow Town
e: **wicklow@sherryfitz.ie**
t: +353 404 66466



Crafting
Homes,
Building
Communities.

kdmHomes Disclaimer

The information contained in this document, including any plans, descriptions, images, specifications, or dimensions, or communicated to prospective buyers are indicative, are for illustrative purposes only and serves as a general guide for prospective buyers. Images shown are of a previous showhouse completed by kdmHomes and represent a similar standard of design and finish. Any such information, whether provided in writing, verbally, or otherwise, should not be relied upon as the basis for any offer or contract and does not constitute a statement of fact, representation, or warranty. All plans are not to scale, and measurements or areas provided are estimates only and subject to change. Prospective buyers are responsible for conducting their own enquiries and verifying the accuracy of all information through inspection or other means. kdmHomes reserves the right to make changes to designs, features, finishes, and specifications. As a result, the completed home may differ from the information provided. Details regarding transport, local amenities, and surrounding infrastructure are indicative only and may be subject to change.

Please refer to your contract pack (if applicable) for further information on any matters not covered in this document. kdmHomes does not authorise agents or staff to make any representation or warranty regarding this development. All statements in this document are provided without liability on the part of kdmHomes.

kdm
homes