

B U I L D I N G

2 6 0 0

AVENUE 2000, CORK AIRPORT BUSINESS PARK

Modern Office
Accommodation To Let





OFFICE ACCOMMODATION

This modern office building provides a unique opportunity to occupy an impressive refurbished and upgraded office property in a sought-after business park location. Available with immediate effect.

Accommodation extends to 3,806 sq m (40,967.78 sq ft) GIA and is well presented including open plan office space at ground and first floor, a staff restaurant, numerous boardrooms, meeting rooms, private offices, break-out space and reception lobby. Other facilities include shower and changing rooms, a bicycle store, direct lift access to each floor and 162 surface car parking spaces. The offices have been designed to offer high levels of natural light and can be sub-divided, if required.

ACCOMMODATION SCHEDULE

FLOOR	SQ M GIA	SQ FT GIA
Ground	1,903	20,483.89
First	1,903	20,483.89
Total	3,806 approx.	40,967.78 approx.

Please note, measurements are for guidance purposes only.

This modern **office building extends to 3,806 sq m (40,967.78 sq ft) GIA**

CORK AIRPORT BUSINESS PARK

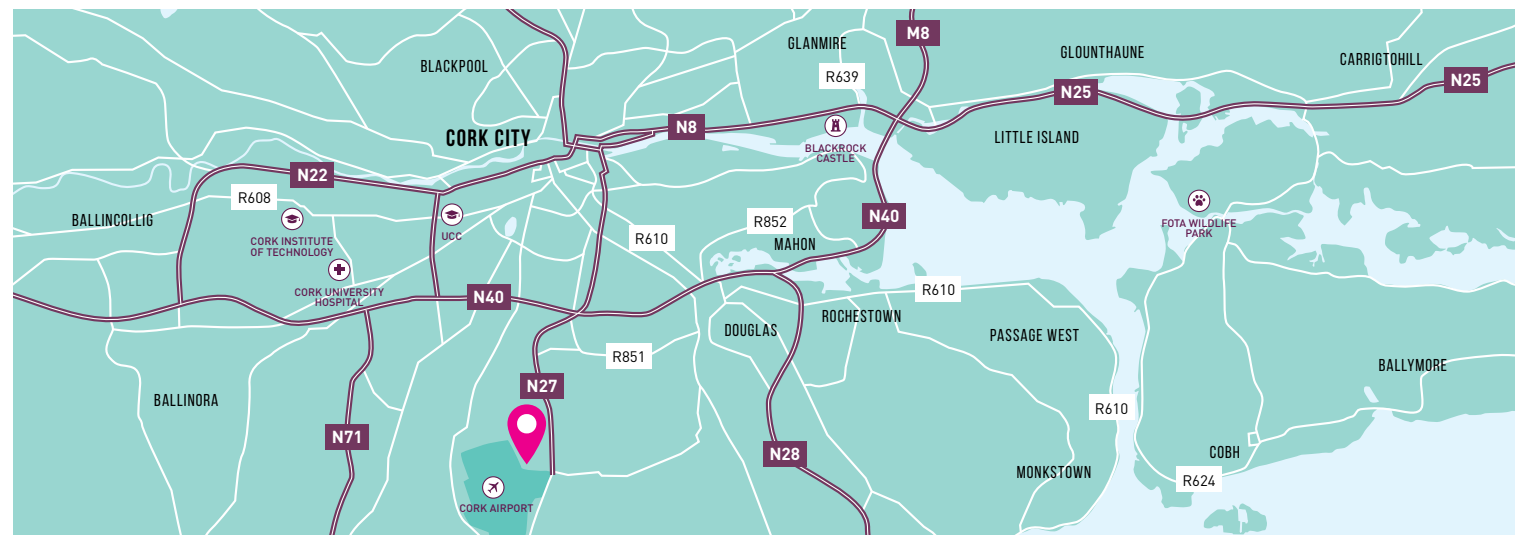
The park is strategically situated in a prominent location at the entrance to Cork Airport and has been designed to provide modern office accommodation to a wide range of international occupiers including Amazon, OpenText, RedHat, Aon, Logitech, IBM and BNY Mellon.

Travel times from the City centre is approximately 15 minutes and approximately 10 minutes to City Gate, Mahon. Ease of access to all major transport links including CIE public bus routes, South Link, N27, N71, N25, N40 and M8.



LOCAL OCCUPIERS

- | | |
|-----------------------------|-----------------------------|
| 1. Airport Terminal | 8. Amazon |
| 2. Cork Airport Hotel | 9. RedHat |
| 3. Café | 10. AON |
| 4. Analog Devices | 11. Poppulo |
| 5. OpenText | 12. IBM |
| 6. CAPS | 13. Atlantic Flight Academy |
| 7. Cork International Hotel | 14. Logitech |
| | 15. BNY Mellon |





SPECIFICATION & FEATURES

- › Fully refurbished to a high standard
- › Passenger lift
- › Extensive surface car parking
- › Suspended ceilings
- › Air conditioning
- › Comms Rooms
- › Multiple meeting rooms and board rooms
- › Open plan and private office space
- › Staff restaurant
- › Coffee stations and kitchenettes
- › Shower facilities and changing rooms

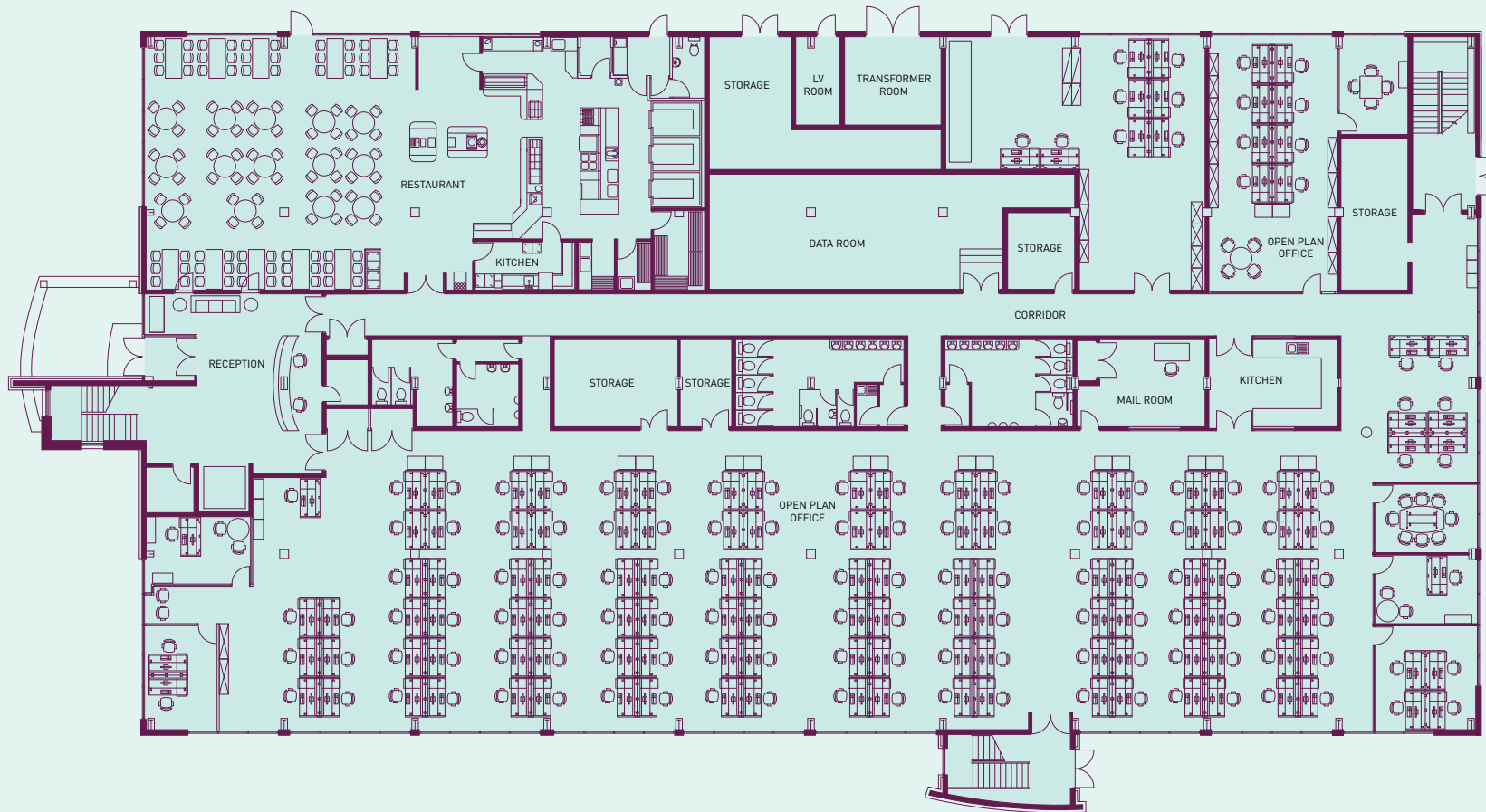
Large **flexible**
floor plates



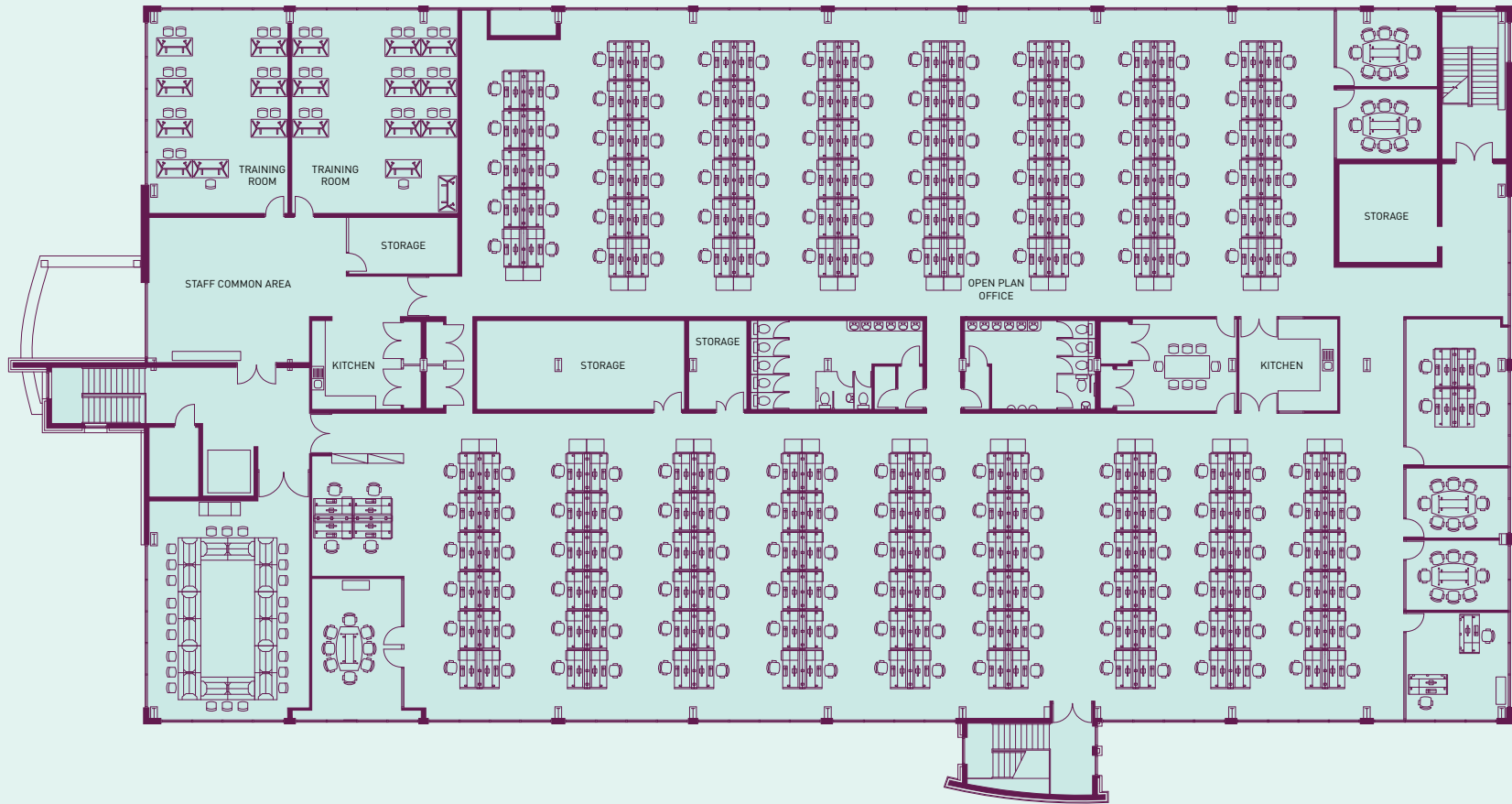


The office building
includes **162**
parking spaces





GROUND FLOOR PLAN



FIRST FLOOR PLAN



JOINT AGENT CONTACT INFORMATION



89/90 South Mall, Cork
cork@cushwake.ie
+353 (0)21 427 5454
cushmanwakefield.ie

Licence No.: 002607

Peter O'Flynn
+353 (0)21 464 8502
peter.oflynn@cushwake.ie

Sean Healy
+353 (0)21 427 5454
sean.healy@cushwake.ie



11 South Mall, Cork
+353 (0)21 427 1371
savills.ie

Licence No.: 002233

Niall Guerin
+353 (0)21 490 6340
niall.guerin@savills.ie

Emmet Finnegan
+353 (0)21 490 6118
emmet.finnegan@savills.ie

FURTHER INFORMATION

LEASE DETAILS

Available upon request

AVAILABILITY

Immediate

VIEWINGS

By appointment

BER DETAILS

BER Number: 800622755



Conditions to be noted: Conditions to be noted: A full copy of our general brochure conditions can be viewed on our website at <http://www.cushmanwakefield.ie/terms/> and <https://www.savills.ie/footer/terms-and-conditions.aspx>, or can be requested from your local Cushman & Wakefield / Savills office. We strongly recommend that you familiarise yourself with these general conditions. While care has been taken to ensure that information contained within publications is correct at the time of publication, changes in circumstances after the time of publication may impact on the accuracy of this information.

Cushman & Wakefield's PSRA Registration Number: 002607
Savills PSRA Registration Number: 002233

