



18 Whitethorns, Castletroy, Limerick



Price €325,000





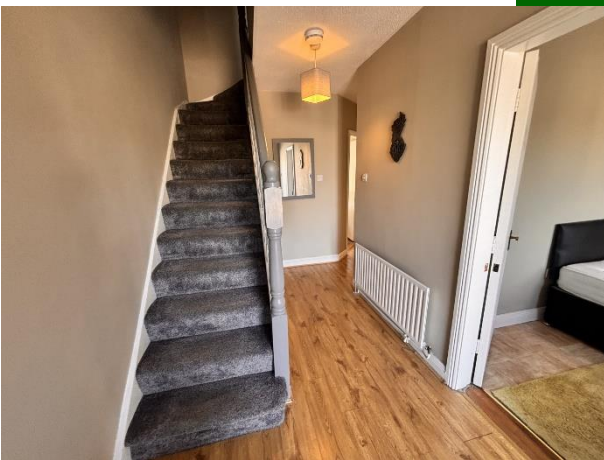
This impressive property enjoys close proximity to an array of local amenities including the University of Limerick, Castletroy Shopping Centre, excellent primary and secondary schools, Plassey Technological Park, cafés, restaurants, gyms, scenic riverside walks, the Greenway and Newtown Recreation Park. Other local focal points include Castletroy Golf Club, Monleen GAA Club, Aisling Annacotty FC and UL Bohs RFC.



Internally, this property is finished to a high standard throughout providing well-proportioned, bright and spacious living and bedroom accommodation.

The welcoming interior comprises an entrance hallway, a generously sized living room with ample natural light, a modern fitted kitchen/, large open plan living/dining area, four spacious bedrooms with built in wardrobes, and a well-appointed main bathroom.

This attractive unit offers an ideal blend of comfort, convenience, and contemporary living in a thriving residential location.



Rooms:

Entrance Hall Laminated flooring.

4.08m (13'5") x 2m (6'7")

Living/Dining room Laminated flooring.

Open fire. Sliding door to allow natural light

4.01m (13'2") x 6m (19'8")



Kitchen

Generous eye and floor level presses.

Tiled flooring.

3.01m (9'11") x 2.05m (6'9")

Bedroom 1

Laminated flooring.

Built in wardrobes.

3.06m (10'0") x 2.08m (6'10")



Bedroom 2

Double.

Laminated flooring.

Built in wardrobes.

3.06m (10'0") x 3m (9'10")



Bedroom 3

Double.

Laminated flooring.

Built in wardrobes.

2.08m (6'10") x 3.06m (10'0")

Bedroom 4

Double. Laminated flooring.

Built in wardrobes. 3.02m (9'11") x 3.03m (9'11")



Bathroom

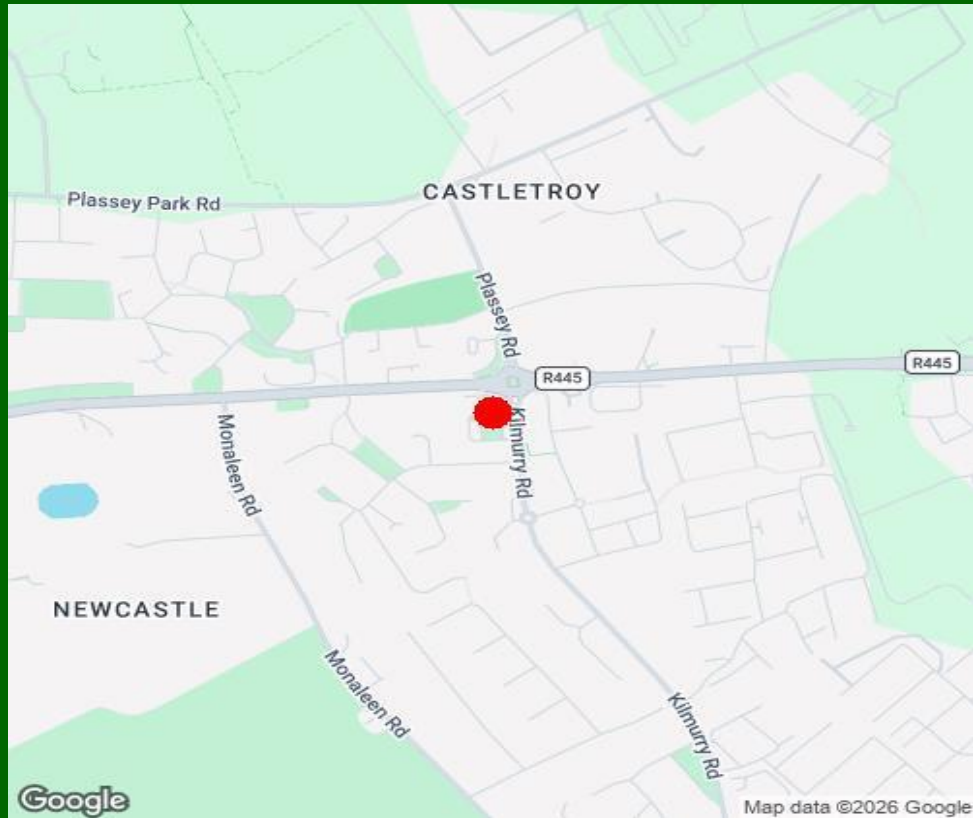
Electric shower. Tiled flooring.

1.05m (3'5") x 2.06m (6'9")

Features:

- Very spacious 4 bedroom duplex unit
- Bright and modern living accommodation
- Excellent condition throughout
- Double glazed UPVC windows
- Gas fired central heating
- Walking distance to University of Limerick and Plassey Technological Park
- Easy access to M7 Motorway
- Prime Castletroy location
- Bus service at your doorstep
- Great local walkways (Greenway) and cycle lanes





Property Directions:

Enter V94 YC82 into your mobile device. GVM sign thereon

Agent Information:

Contact :- Paul Crosse

Mobile :- 0872026886

Email:- paulcrosse@gvm.ie

Disclaimer

These particulars do not form any contract and are for guidance purposes only. Computer generated images, maps and plans are not drawn to scale and measurements are approximate and for guidance only. Intending purchasers must satisfy themselves as to the accuracy of detail given to them verbally or as part of this brochure. Such information is given in good faith and believed to be correct. However neither the vendor nor their agents shall be held liable for any inaccuracies therein.

Limerick Office

25-26 Glentworth St,
Co. Limerick,
V94WE12

Phone: (061)413522

Email: limerick@gvm.ie

Kilmallock Office

Head Office,
Railway Road,
Kilmallock,
Co. Limerick

Phone: (063)98555

Email:
kilmallock@gvm.ie

Tullamore Office

GVM Mart,
Arden Road,
Tullamore,
Co. Offaly

Phone: (057)9321196

Email:
tullamoreproperty@gvm.ie



PSRA Number: 002030