

Residential

Coonan
PROPERTY



Ancalagon, Clonmahon, Summerhill, Co. Meath

- Superb B rated six bedroom detached dormer bungalow extending 220 sq. m /2368 sq. ft sitting on 0.64 acre site
- Accommodation comprises of entrance hallway, guest bathroom, living/dining room, kitchen, utility, six bedrooms, three en-suite, walk in wardrobe, family bathroom and detached garage
- Large South west facing garden acts as an extended living area during the course of the summer months, equipped for the enthusiastic gardener with polytunnel, established vegetable and fruit patch, mature fruit trees, water feature, raised beds, patio area, flowers and a variety of shrubs
- This family home offers generous living area and high quality fittings, including granite countertops, Stanley oven, hardwood pine flooring are among the many attributes that make this an exceptional home
- Ideally located only a short walk to Summerhill village with a host of local amenities such as shops, cafes, restaurants, schools, sporting facilities and public transport
- Dublin airport and city is easily accessed via the M4 and M3 motorway which are both circa 10 minutes drive away, only 45 minute drive from Dublin City Centre and 20 minute drive from The National University of Maynooth

6 bedroom detached
dormer bungalow
extending to approx.
220 sq.m (2,368 sq.ft)

Guide Price:

€675,000

Private Treaty

Accommodation

Coonan
PROPERTY

Entrance Hallway	6.36m x 2.35m	Tiled flooring, recessed lights, radiator cover, hotpress, hardwood stair case and recessed space under stair.
Guest W.C.	1m x 2.12m	Fully tiled, w.c., w.h.b. and light fitting.
Living/Dining Room	7m x 4.2m	Semi solid flooring, feature gas fire with hardwood mantel piece, coving, TV point, light fitting, feature windows looking onto front garden, ample dining area with door leading into kitchen area.
Kitchen	4.6m x 6.13m	Tiled floor, fitted wall and floor unts, tiled splashback, granite worktop, stainless sink with Franke food waste disposer, Neff oven, Neff hob, Neff extractor fan, island with integrated units and wine rack, Stanley Range cooker, integrated dishwasher, recessed lights and coving.
Utility Room	1.81m x 2.69m	Tiled flooring, additional wall and floor storage units, worktop, fully plumbed, integrated shelving and cloak area.



Accommodation

Coonan
PROPERTY

Inner Hallway	9.99m x 4.41m	Semi solid flooring and recessed lights.
Bedroom 1	3.98m x 2.9m	Semi solid flooring, fitted wardrobes and light fitting.
En-suite	1.7m x 2.62m	Fully tiled, shower cubicle, w.c., w.h.b., heated towel rail and recessed lights.
Bedroom 2	3.77m x 2.62m	Semi solid flooring, fitted wardrobes and light fitting.
Bedroom 3	4m x 2.72m	Semi solid flooring, fitted wardrobes and light fitting.



Accommodation

Coonan
PROPERTY

Bedroom 4	2.7m x 3.34m	Semi solid flooring, fitted wardrobes and light fitting.
Bathroom	1.67m x 2.32m	Fully tiled wetroom with power shower, w.c., w.h.b., heated towel rail and recessed lights.
Landing	3m x 3.77m	Hardwood pine staircase, hardwood pine flooring, recessed space, attic access and recessed lights.
Master Bedroom	6.85m x 5.57m	Hardwood pine flooring, recessed lights, feature windows overlooking southwest facing rear garden.
Walk In Wardrobe	3.88m x 1.7m	Integrated shelving units and recessed lights.



Accommodation

Coonan
PROPERTY

En-suite	4.1m x 2.75m	Pine hardwood flooring, Jacuzzi bath, shower cubicle with electric shower, w.c., w.h.b., shaving light and mirror and recessed lights.
Bedroom 6	5m x 6m	Hardwood pine flooring, recessed lights, integrated shelving and Velux window.
En-suite	2m x 1.17m	Pine hardwood flooring, shower cubicle with electric shower, w.c., w.h.b., shaving light and mirror, recessed lights and Velux window.
Garden and Garage		South west facing garden with patio area, large lawn space, water feature, patio area, mature trees including apple, fruit & Veg patch, fruit trees, 4 raised beds and polytunnel for potting & propagating.
Block Built & Rendered Garage	(9m x 4.5m) (2.45m x 4.27m)	Sub divided garage with garage and storage area and second section laidout as a home gym. Alarmed, wired and concrete floor.



Accommodation

Coonan
PROPERTY

Additional Information:

Gross internal floor area approx. 221sq.m
(2,389 sq. ft)
Built in 1985
Property sits on 0.64 acre site
House and garage are fully alarmed and all
sensors upgraded/ replaced recently
Smoke alarms upstairs and downstairs
Carbon monoxide alarm downstairs
Two side entrances gated
Outside lights
Outside tap

Entrance Driveway:

Tarmacadam driveway, wood fence, lawn, mature trees and planting.

Items Included in sale:

Fixtures, fittings and window
dressings, Neff oven, induction hob,
extractor fan, Stanley Range
cooker, integrated dishwasher and
light fittings.

Services:

Mains water
Mains sewerage
Oil fire central heating
Two zoned heating system



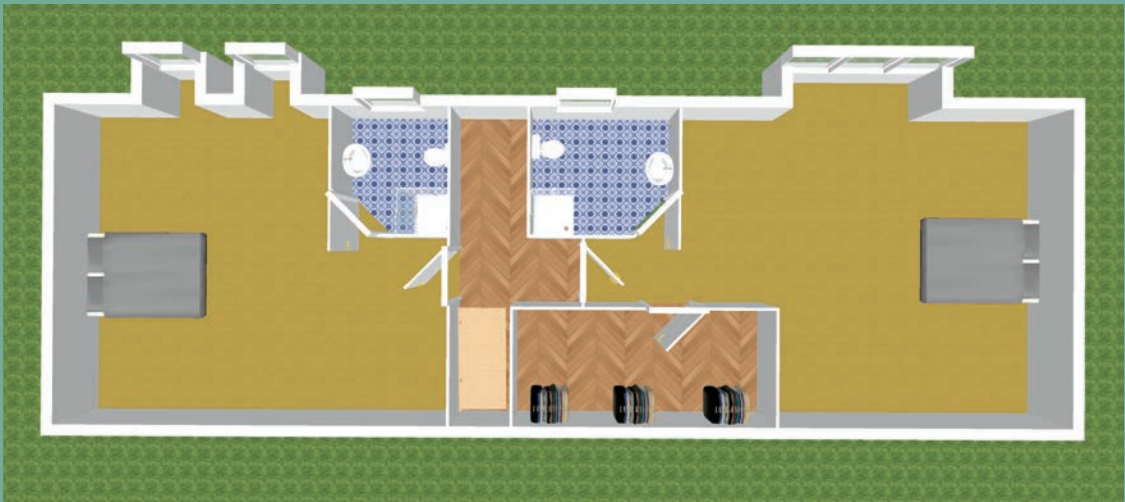
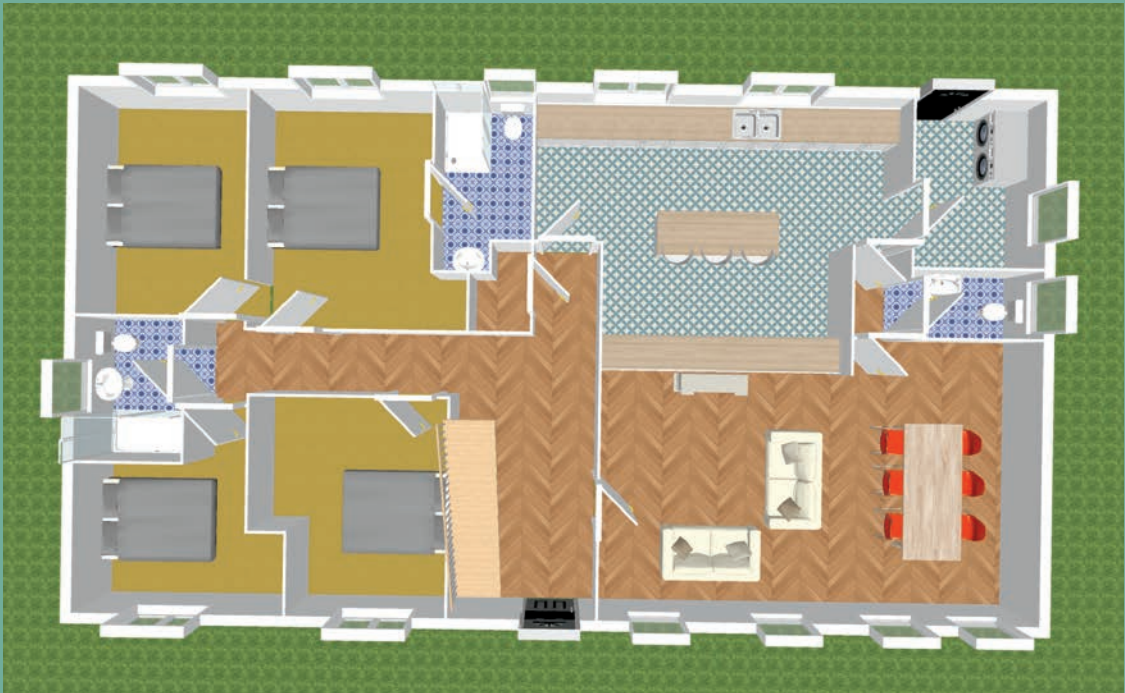
Accommodation

Coonan
PROPERTY



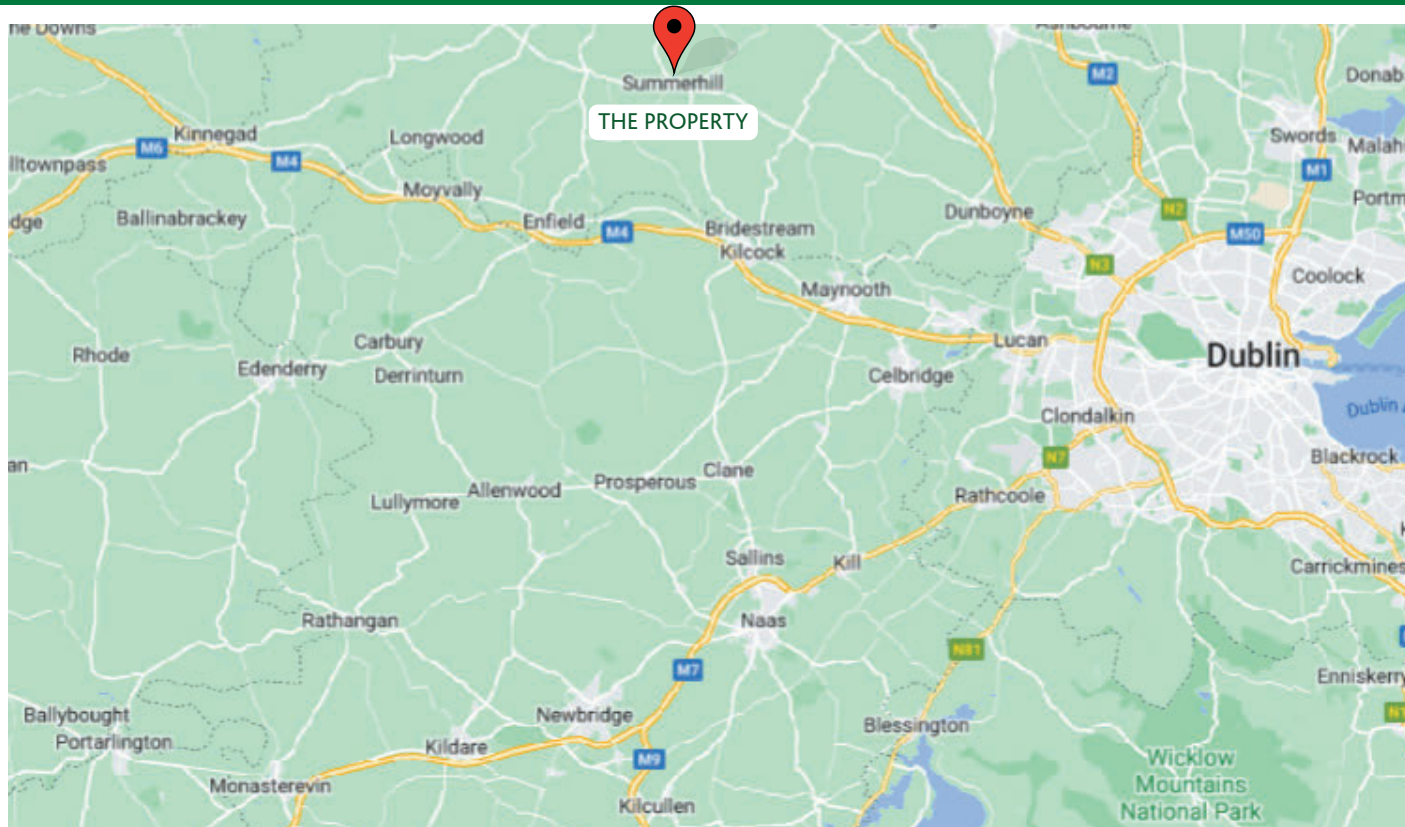
Floor Plans

Coonan
PROPERTY



Directions

Coonan
PROPERTY



Directions

A83 NA09

BER

BER B3

Viewing

By prior appointment at any reasonable hour.

Coonan
PROPERTY

Contact Information:

Jill Wright

016286128

jillw@coonan.com

PSRA No.: 003764.

The above particulars are issued by Coonan Property on the understanding that all negotiations are conducted through them. Every care is taken in preparing particulars which are issued for guidance only and the firm does not hold themselves responsible for any inaccuracies. All reasonable offers will be submitted to the vendors for consideration but the contents of this brochure shall not be deemed to form the basis of any contract subsequently entered into. The vendor or lessor do not make, give or imply nor is Coonan Property or its staff authorised to make, give or imply any representation or warranty whatsoever in respect of this property.

Coonan
FINANCIAL GROUP

Coonan Mortgage Group Limited t/a Coonan Financial Group is regulated by the Central Bank of Ireland. Registration No.: 431200

For all your mortgage needs contact:

Dermot Horan / Romana Anca

01 505 2718

admin@coonanmortgage.com

coonan.com