

BARONSCOURT

Medical Centre & Pharmacy



MARYBOROUGH VILLAGE

- Portlaoise 1557 -

A DEVELOPMENT BY:



HELPING YOU FEEL AT HOME SINCE 1972

ESTD 1940

HUME
AUCTIONEERS

We get the pick of the crop



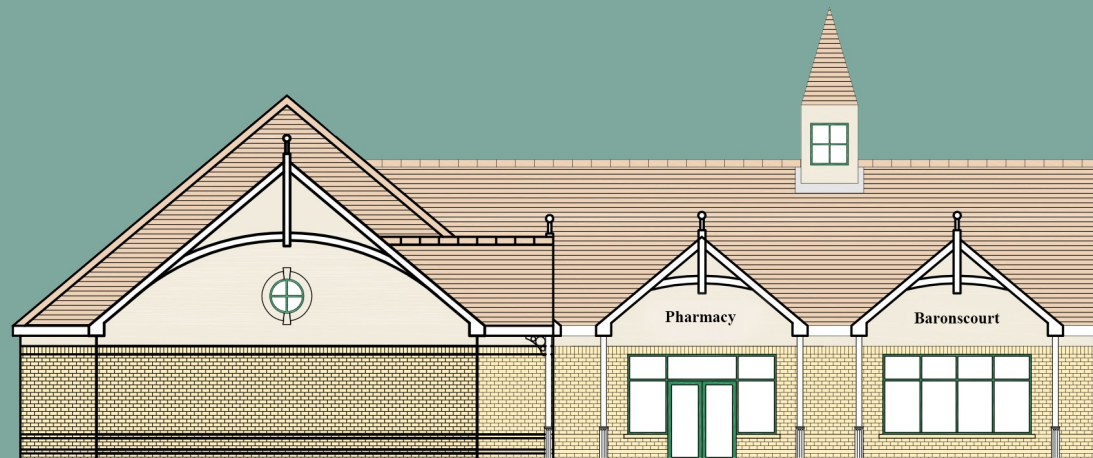
Prime Location



Ideally Suited For Medical Practice



Ireland's Fastest Growing Town



BARONSCOURT MEDICAL CENTRE: 500 Sq. M . in one or two units.



Prestigious Development



Ideally Suited For Pharmacy



Ideally Suited For Dental Practice

BARONSCOURT MEDICAL CENTRE is a brand new A-Rated property ideally located within a prestigious development of 433 prestigious homes in Portlaoise; Ireland's fastest growing town.

Enjoying an exceptional location **BARONSCOURT** is within walking distance of Portlaoise Town Centre and Train Station and just minutes from the M7 motorway and Midland's Hospital Portlaoise.

With over 500 Sq. Metres of beautiful high-spec accommodation divided into two individual units the property is ideally suited for a range of medical professional practices and a complimenting Pharmacy seeking to service a high-end client base.

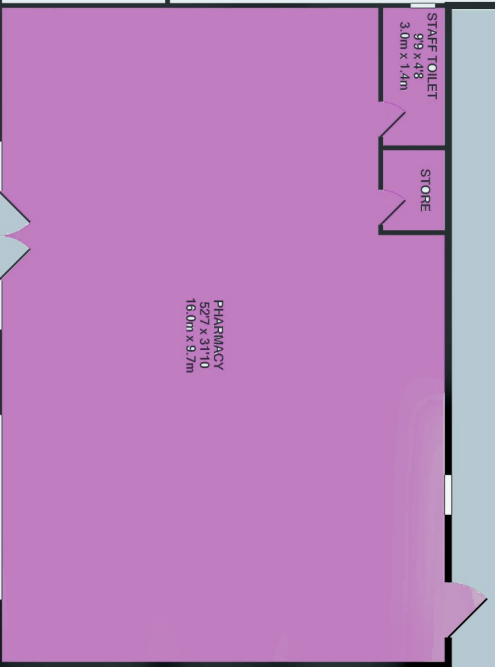
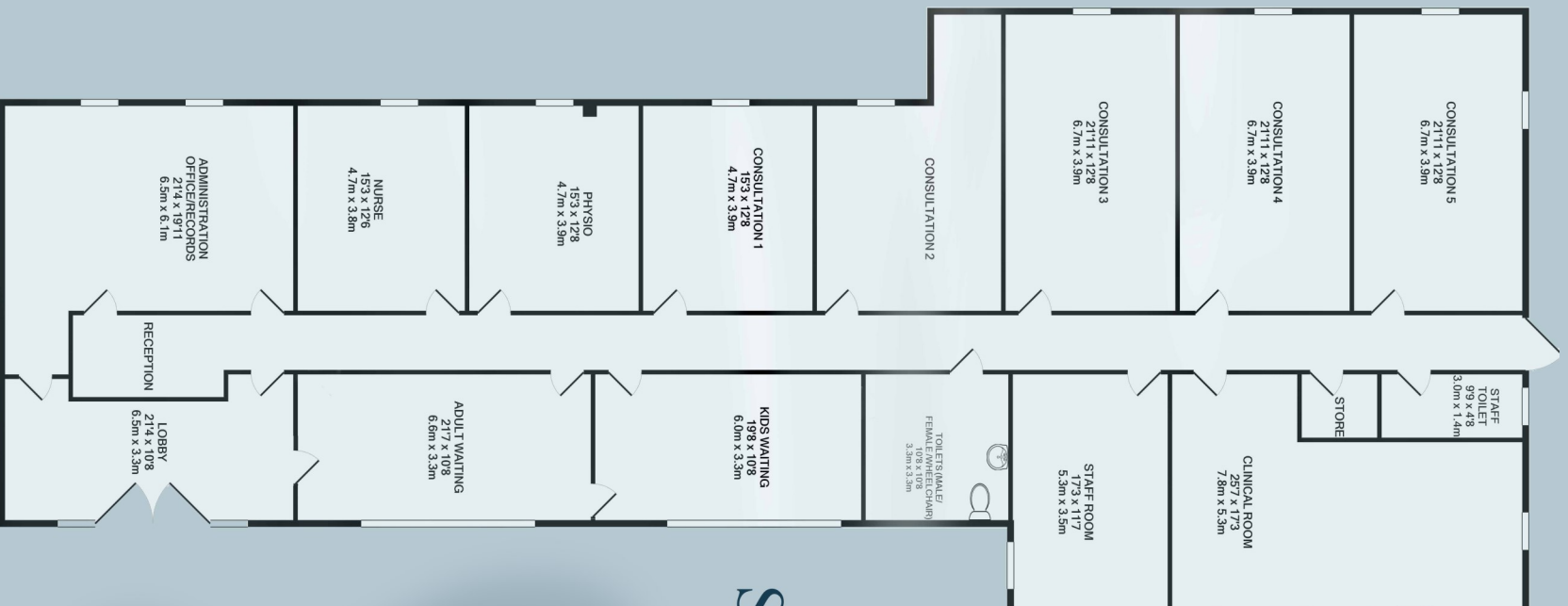
Graham Developments are a household name in the region and the leading development company here since 1972. Construction begins in 2020 and can be tailored to suit the individual requirements of the end users.

All Enquiries:



John Dunne MRICS
Hume Auctioneers
Portlaoise
057 8681111. info@hume.ie

License No. 002446



Site Map

