

# FOR SALE

AMV: €275,000

File No.E190. BF



## 6 Harbour View, Maudlintown, Wexford

- A stunning fully refurbished two bedroomed townhouse boasting magnificent un-interrupted views across Wexford Harbour and out to sea. Conveniently situated in this mature location just off Trinity Street, this property is within walking distance of the Town Centre and all amenities.
- This charming traditional townhouse was recently refurbished to a high standard, with upgrades including wall and attic insulation, new floors with dpc, radon barrier and insulation, complete re-wiring, re-plumbing, double glazed uPVC windows, oil-fired condensing boiler, solid fuel stove with back boiler supplementing the heating system, modern fitted kitchen and stylish contemporary bathrooms.
- This characterful residence offers immense appeal to discerning purchasers seeking a stylish coastal home. It represents an ideal starter home while also offering a superb low-maintenance option for those looking to enjoy convenient in-town living. Equally, it would make a perfect coastal retreat in the sunny south-east, with all that Wexford Town has to offer right on your doorstep.
- Early viewing is highly recommended - to book an appointment contact Wexford Auctioneers Kehoe & Associates 053-9144393

**Kehoe  
& ASSOC.**



**Description:** A stunning fully refurbished two bedroomed townhouse boasting magnificent uninterrupted views across Wexford Harbour and out to sea. Conveniently situated in this mature location just off Trinity Street, this property is within walking distance of the Town Centre and all amenities. Local shops, pharmacy, medical centre and pubs are only a short stroll away in The Faythe.

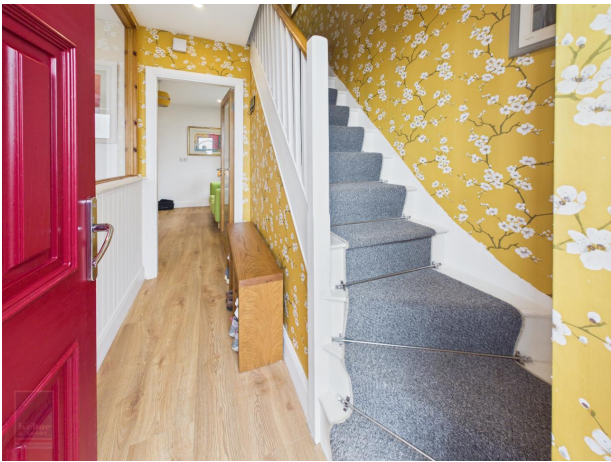
This charming traditional townhouse was recently refurbished to a high standard, with upgrades including wall and attic insulation, new floors with dpc, radon barrier and insulation, complete re-wiring, re-plumbing, double glazed uPVC windows, oil-fired condensing boiler, solid fuel stove with back boiler supplementing the heating system, modern fitted kitchen and stylish contemporary bathrooms.

Boasting bright and beautifully presented accommodation, the interior is both spacious and free flowing. The ground floor comprises an inviting living room, a well-appointed modern kitchen, bathroom and a versatile study/home office/bedroom 3 featuring a striking picture window framing breathtaking views out to sea and across to the Raven Point and Curracloe Beach. Upstairs, there are two generously proportioned double bedrooms, including a well-appointed ensuite. The entire property is finished to a high specification and presented in turnkey condition, ready for immediate occupation.

Externally, the home is equally impressive. To the front lies an attractive cottage-style garden, thoughtfully planted with a colourful array of flowering shrubs and plants. A private driveway provides valuable off-street parking. To the rear, a fully paved, totally enclosed south-facing courtyard style garden offers low maintenance outdoor living, complemented by a spacious west-facing patio to the side – perfect for enjoying the spectacular sea views.

This characterful residence offers immense appeal to discerning purchasers seeking a stylish coastal home. It represents an ideal starter home while also offering a superb low-maintenance option for those looking to enjoy convenient in-town living. Equally, it would make a perfect coastal retreat in the sunny south-east, with all that Wexford Town has to offer right on your doorstep.

Early viewing is highly recommended - to book an appointment contact Wexford Auctioneers Kehoe & Associates 053-9144393



## ACCOMMODATION

### ***Ground Floor***

Entrance Hallway	2.62m x 1.87m	With wainscoting and laminate floor.
Living Room	3.58m x 4.03m	With solid fuel stove, built-in shelving, hotpress with dual immersion, understairs cloaks closet and laminate floor.
Study/Bedroom 3	2.59m x 2.53m	With built-in book case, laminate floor and picture window with stunning views out to sea and across to the Raven Point and Curacloe Beach.
Inner Hallway	2.28m x 1.01m	With With laminate floor and built-in laundry/storage presses plumbed for washing machine.
Bathroom	2.20m x 1.35m	Bath with electric shower over, w.c., vanity w.h.b., heated towel rail, part tiled walls and tiled floor.
Kitchen	3.29m x 3.92m	With excellent range of fitted units, gas hob, extractor, fridge freezer, part tiled walls, laminate floor and sliding patio doors to outside.

### ***First Floor***

Bedroom 1	3.50m x 2.93m	With built-in wardrobes, timber floor and shower room ensuite.
Ensuite	2.47m x 0.89m	Tiled shower stall with electric shower, w.c., w.h.b., part tiled walls and tiled floor.
Bedroom 2	3.29m x 2.71m	With built-in wardrobes and timber floor.

**Total Floor Area: c. 77.20 sq. m. (c. 831 sq. ft.)**









## Features

- Stunning unrivalled sea views
- Convenient in town location
- Recently refurbished
- Presented in mint condition

## Outside

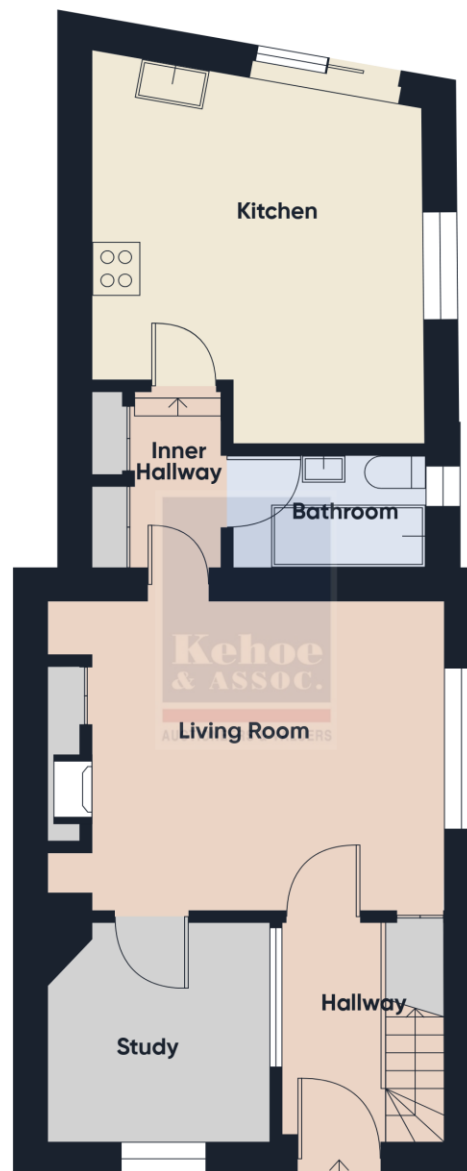
- Off-street parking
- South facing courtyard style rear garden
- Westerly facing patio area with sea views
- Garden shed/potting shed

## Services

- Mains electricity
- Mains water
- Mains drainage
- OFCH / SFCH

**VIEWING:** Strictly by prior appointment with the sole selling agents only.

**DIRECTIONS:** Eircode Y35N7F2



Floor 0







**Building Energy Rating (BER): B3 BER No. 118715721**

**Energy Performance Indicator: 140.77 kWh/m<sup>2</sup>/yr**

**VIEWING:**

Strictly by prior appointment with the sole selling agents.

**Selling Agent: Bernie Farrell**

**Contact No: 0872501492**

**Email: [bernie@kehoeproperty.com](mailto:bernie@kehoeproperty.com)**

**Kehoe & Assoc.,**

Commercial Quay,

Wexford

053 9144393

[www.kehoeproperty.com](http://www.kehoeproperty.com)

Email: [sales@kehoeproperty.com](mailto:sales@kehoeproperty.com)



These particulars are issued for guidance purposes only and do not form part of any contract and are issued on the understanding that all negotiations regarding this property will be conducted through this firm. PRA No. 002141