



Oakley Meadows

A place to **belong.**

 Sligo Town

Welcome to Oakley Meadows

Oakley Meadows offers a fresh perspective on modern living in Sligo – where contemporary design, family comfort, and scenic beauty come together.

Set within view of the majestic Knocknarea Mountain, this carefully planned development features a selection of A-rated semi-detached, terraced, and detached homes. Each home is thoughtfully designed with generous living spaces, high-quality finishes, and energy-efficient systems that keep your home comfortable and your costs down.

Perfectly located on Pearse Road, Oakley Meadows is within easy reach of Sligo town centre – a lively hub for education, business, shopping, and leisure. With excellent transport links, nearby schools and amenities, and a strong sense of community, Oakley Meadows is a place to put down roots, build your future, and enjoy a balanced, connected lifestyle.

Contents

Why choose kdmHomes?....	4
Oakley Meadows	8
Accessibility	11
At home in Sligo	14
High standards	16
At a glance	18
House plans	20
Support for the buyer	28
Contact details	30

A place to **explore.**

Why choose kdmHomes?

Building homes for **generations**.

At kdmHomes, we take pride in delivering quality, energy efficient homes that combine modern style with everyday comfort. With a steadfast commitment to high standards, sustainable construction, and exceptional customer service, we ensure every home exceeds the expectations of today's homeowners.

We believe that a house is more than just bricks and mortar, it is the foundation for a lifetime of memories. Drawing on years of experience, our design journey is a continuous evolution of past learnings and embracing evolving technologies while understanding the needs of our buyers. We always look to the future, crafting homes that are not only built for modern living but are designed for generations to enjoy.



Innovative Design

Contemporary architecture with functional, stylish layouts.



Energy Efficiency

A-rated homes designed for sustainable, low-cost living.



High-Quality Craftsmanship

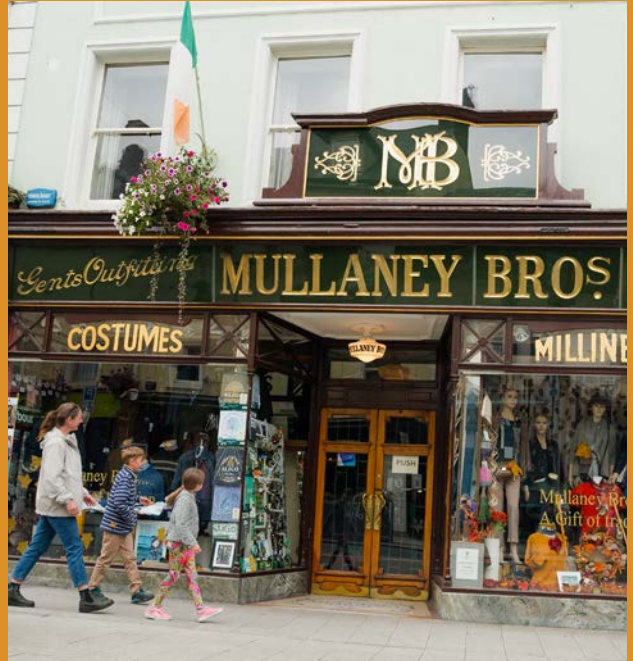
Built with the finest materials and finishes.



Customer-Focused Approach

We work with buyers at every step to deliver a home they love.





A place to **thrive.**

A two-story brick house with a woman and a child walking on the sidewalk and a car parked on the street. The house has a gabled roof and multiple windows. The woman is wearing a green dress and sunglasses, and the child is wearing a patterned shirt and dark pants. A dark grey car is parked on the street to the right of the house. The sky is blue with some clouds.

kdmHomes

deliver innovative, sustainable, A-rated homes with functional layouts, quality craftsmanship, and a customer-focused approach—building energy-efficient spaces designed for comfort today and generations ahead.



Oakley Meadows, Sligo

The perfect place to **call home.**

Located on Pearse Road in the heart of Sligo, Oakley Meadows delivers the best of both worlds – a welcoming neighbourhood with modern homes and everyday amenities close at hand. With the N4 just minutes away, travel to Dublin or beyond is simple, while Sligo’s vibrant mix of education, enterprise, and natural beauty – from Knocknarea and Benbulbin to the wild Atlantic coastline – makes this a place where lifestyle and opportunity go hand in hand.

Prime Location

Easy access to the N4 for Dublin and midland commutes.

Remote work/Strong employment hub

Co-working hubs and major employers in pharma, tech, and industry.

Excellent Schools

Primary, secondary & third-level education options.

Community

Family-friendly atmosphere with local clubs and activities.

Retail

Access to supermarkets and nearby Sligo town centre for a broader shopping experience.

Healthcare

Access to GP clinics, pharmacies, veterinary clinics and Sligo Hospital just minutes away.

Outdoors

Stunning outdoor amenities, coastal walks, mountain trails, and the serene Sligo Way for hiking.

Recreation

GAA, rugby, tennis, pitch & putt, running tracks, horse riding and golf courses.

Culture

Theatres, festivals, dining, and entertainment options.



Oakley Meadows offers the best of Sligo – close to the town centre, yet peacefully removed from the hustle and bustle, blending urban convenience with a true sense of community.



A place to **have some fun.**




A place to **connect.**

Accessibility

Distances from **Oakley Meadows**, Sligo.

Location	Distance (km)	Approx. Travel Time (Car)
Motorway/Transport		
Sligo Town Centre	3.6 km	12 min
Sligo Library	3.0 km	12 min
Sligo University Hospital	3.6 km	13 min
Sligo Train/Bus Station	2.7 km	9 min
Knock Airport	52 km	45 min
Shannon Airport	206 km	2hr 24 min
Dublin Airport	210 km	2hr 41 min
Galway City Centre	135 km	2 hr
Enniskillen	70 km	1hr 16min
Belfast airport	200 km	3 hr
ATU University Sligo	5.0 km	12 min
Carraroe Retail Park	700 m	3 min
Sligo Park Hotel	300 m	1 min
Markievicz Park GAA Stadium	700 m	2 min
Our Lady of Mercy Primary School	1.8 km	5 min
Carraroe National School	1.6km	4 min
Scoil Eoin Naofa	2.0 km	5 min
Sligo School Project	2.2 km	5 min
Sligo Grammar School	3.4 km	9 min
Summerhill college	1.9 km	5 min
Ursuline college	4.6 km	8 min

A photograph of two surfers in black wetsuits walking through the shallow ocean surf. The surfer in the foreground is carrying a large, dark, textured surfboard under his arm. The surfer in the background is carrying a white surfboard. The sky is overcast and grey, and the waves are white and foamy. A semi-transparent brown rectangular box is overlaid on the left side of the image, containing white text.

Sligo offers the perfect blend of modern convenience, rich heritage, and scenic natural beauty, making it an ideal place to live, work, and thrive



At home in Sligo.

The perfect blend of **modern convenience**, rich heritage, and scenic natural beauty.

A vibrant town

Situated in the heart of the northwest, Sligo offers a stunning coastal and mountain landscape, a vibrant cultural scene, and a welcoming community, making it a place where you can truly feel at home.

A nurturing environment

From the excitement of starting a family to the ease of retirement, Sligo offers a nurturing environment for all. With excellent schools, accessible healthcare, and a range of leisure activities.

A wealth of amenities

Enjoy excellent shopping, diverse dining options, lively farmers' markets, and a thriving arts and cultural scene—all enhanced by scenic outdoor spaces and top-class recreational facilities in Sligo.

Employment opportunities

As a thriving commercial hub, Sligo is home to a diverse range of businesses, including financial services, technology, retail, and tourism.

Unmatched accessibility

Sligo offers excellent connectivity via the N4 and N17 road networks, train services, and bus routes. Whether traveling to Dublin, Galway, or beyond, Sligo provides a well-connected and convenient base.

Exploring the outdoors

Sligo sits along the Wild Atlantic Way, offering opportunities for surfing, coastal walks, sailing, and outdoor adventures. From the waves of Strandhill to the scenic trails of Knocknarea and Benbulbin.

For more details on all that Sligo offers, visit [sligo.ie](https://www.sligo.ie).



A place to **relish.**

High standards

Built for a **lifetime of comfort and efficiency.**

At kdmHomes, our focus is on creating exceptional A-rated homes that combine smart design, energy efficiency, and long-lasting quality. Oakley Meadows has been thoughtfully developed to suit modern lifestyles, offering well-built, sustainable homes that deliver long-term value. Each home is constructed to rigorous energy standards, helping to reduce everyday running costs while ensuring year-round comfort for you and your family.

House Build specifications – Heating and Ventilation

- Every house will have an A-rated BER Certificate. A-rated energy efficiency is the highest standard in energy performance, reducing utility costs today and into the future.
- Block-built construction – High insulation levels to minimise heat loss through floors, walls, and roofs.
- Underfloor heating on the ground floor with energy-efficient aluminium radiators on first and second floors (where applicable.)
- Advanced airtightness – Keeps warmth inside and eliminates draughts for greater comfort.
- Demand-Controlled Ventilation (DCV) System – Ensures a constant flow of fresh air while maintaining energy efficiency.
- A-rated Air-to-Water Heat Pump – Smart thermostatic and multi-zone controls for efficient heating and hot water.
- High-performance pipe insulation, reduces uncontrolled heat loss for maximum energy conservation.
- Double-glazed, high-performance windows and doors – enhancing insulation, soundproofing, and security.

Windows & doors

- Premium energy-efficient double-glazed uPVC windows in a sleek cement grey exterior and white interior, offering both style and abundant natural light.
- High-performance, premium insulated composite GRP front door in cement grey, complete with a six-point locking system.
- Elegant double uPVC French patio doors offering seamless access to outdoor spaces and excellent thermal performance.

Electrical & Smart Home Features

- Cat 6 cabling throughout for seamless broadband connectivity.
- Fibre-to-the-home broadband (FTTH) enabled
- Pre-wired for intruder alarm for added security.
- Electrical supply to garden areas for added convenience.
- Data and TV connection points installed for convenience.
- Ample electrical sockets provided throughout, including USB charging points in the kitchen, living room, and two bedrooms.
- Comprehensive and thoughtfully designed electrical and lighting specification.

- Energy-efficient LED lighting throughout.
- Exterior lighting provided to both the front and rear of the property.
- Kitchen includes LED downlighters, under-counter lighting, and a central pendant.
- A combination of pendant and recessed downlighters featured in other rooms for balanced illumination.
- Enabled for Electric Vehicle (EV) charging – Future-proofing for modern homeowners.

Kitchen & Utility

- Bespoke kitchens with superior-quality cabinetry and sleek quartz countertops as standard.
- Fitted cabinets in utility rooms included in 3 and 5 bedroom homes for added convenience and functionality.

Bathrooms, WC & En-suites

- Contemporary bathrooms featuring premium sanitary ware.
- Part tiled wet areas featuring high-quality tiling.
- Master en-suite bathrooms featuring stylish, modern fittings and tiling on floor and wet areas.
- Downstairs WC featuring a stone-effect large floor tile and chrome fixtures.
- Additional bathrooms in 5-bed homes for greater practicality.

Internal Finishes

- All walls and ceilings are skim-finished and painted throughout in a soft, neutral palette – walls in Colourtrend Mucky Swan.
- All internal joinery finished in satin wood paint, with skirting and architraves in elegant matt white.
- Contemporary skirting boards and architraves featured throughout.
- Generous ceiling height of at least 2.4 metres in all rooms.
- Airtight attic access hatch with fitted ladder for easy access (where applicable).

Internal Doors

- Hampton Shaker-style internal doors with an elegant, contemporary design.
- Modern Merida door handles on a rose in satin chrome finish.

Attic Space

- Light & power supply fitted in all attics.
- Fire alarm fitted
- Conversion possible attics in 3 and 2 bedroom homes, offering additional storage and living space. Velux roof windows in 3-bedroom homes.
- Conversion possible attics are pre-prepared for potential future conversion, with all necessary services, including pipework and wiring, in place.

Exterior & Landscaping

- Block-paved driveways; durable and visually appealing.
- A refined exterior featuring low-maintenance monocouche render and Vecto brick façade with natural granite window cills for a timeless, elegant appearance.
- Durable, maintenance-free uPVC rainwater goods designed for long-lasting performance.
- Aluminium fascia and soffit with seamless gutters, complemented by traditional round matt black PVC downpipes for a clean, contemporary finish.
- Anthracite grey roof tiles.
- Seeded and landscaped gardens; to create an attractive outdoor space.
- Electrical supply to garden areas
- Futured proofed homes, enabled for Electric Vehicle (EV) charging.
- Outdoor tap for convenience
- Houses divided by elegant Portuguese laurel hedge.
- Landscaped communal areas for the community to enjoy.

Durability - Peace of Mind

- 10-Year HomeBond Structural Warranty for peace of mind.

At a glance

Offering you 1, 2, 3 and 5 bedroom homes.

Carrick 1 Storey

1 Bed Home

Semi-Detached
Bungalow
Front Entrance
60.3 sqm | 649.15 sqft

Tumna 2 Storey

2 Bed Home

Dormer Bungalow
End Terrace
Front Entrance
94.6 sqm | 1018.81 sqft

Tumna 2 Storey

2 Bed Home

Dormer Bungalow
Mid Terrace
Front Entrance
94.6 sqm | 1018.81 sqft

Clonroe 3 Storey

3 Bed Home

Semi-Detached
Front Entrance
122.8 sqm | 1321.94 sqft

Clonroe 3 Storey

3 Bed Home

Detached
Side Entrance
122.2 sqm | 1315.49 sqft

Moylan 2 Storey

2 Bed Home

Semi-Detached
Front Entrance
92.2 sqm | 992.83 sqft

Moylan 2 Storey

2 Bed Home

End Terrace
Side Entrance
92.6 sqm | 996.83 sqft

Moylan 2 Storey

2 Bed Home

End Terrace
Front Entrance
92.2 sqm | 992.83 sqft

Moylan 2 Storey

2 Bed Home

Mid Terrace
Front Entrance
95 sqm | 1022.03 sqft

Doonan 2 Storey

3 Bed Home

Semi-Detached
Front Entrance
114.8 sqm | 1235.92 sqft

Doonan 2 Storey

3 Bed Home

Semi-Detached
Side Entrance
116 sqm | 1248.61 sqft

Ardagh 3 Storey

5 Bed Home

Semi-Detached
Front Entrance
160.5 sqm | 1727.88 sqft

Ardagh 3 Storey

5 Bed Home

Detached
Side Entrance
179.1 sqm | 1928.03 sqft

Ardagh 3 Storey - Extended

5 Bed Home

Semi-Detached
Front Entrance
176.9 sqm | 1904.36 sqft

Ardagh 3 Storey - Extended

5 Bed Home

Semi Detached
Side Entrance
178.1 sqm | 1917.26 sqft



Illustrative purposes only. All plans and dimensions are for guidance only and may be subject to change. kdmHomes reserves the right to modify layouts, building styles, landscaping, and specifications without prior notice. As a result, the completed home may differ from the details provided.

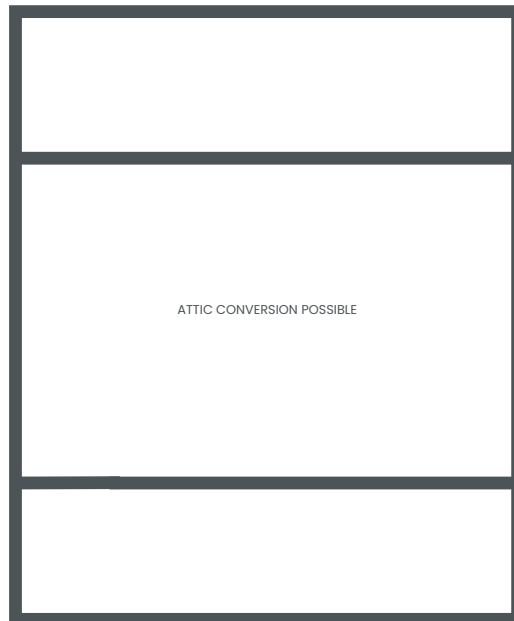
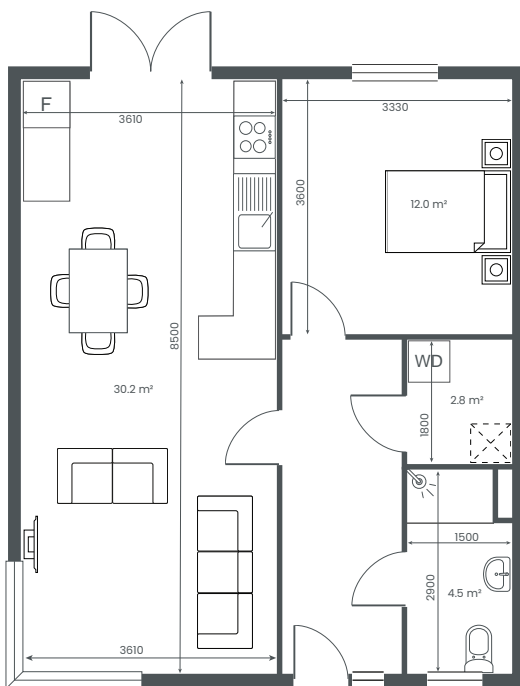
Carrick 1 Storey

1 Bed

Semi Detached Bungalow

Front Entrance

60.3 sqm | 649.15 sqft



Illustrative purposes only. All plans and dimensions are for guidance only and may be subject to change. kdmHomes reserves the right to modify layouts, building styles, landscaping, and specifications without prior notice. As a result, the completed home may differ from the details provided.

Tumna 2 Storey

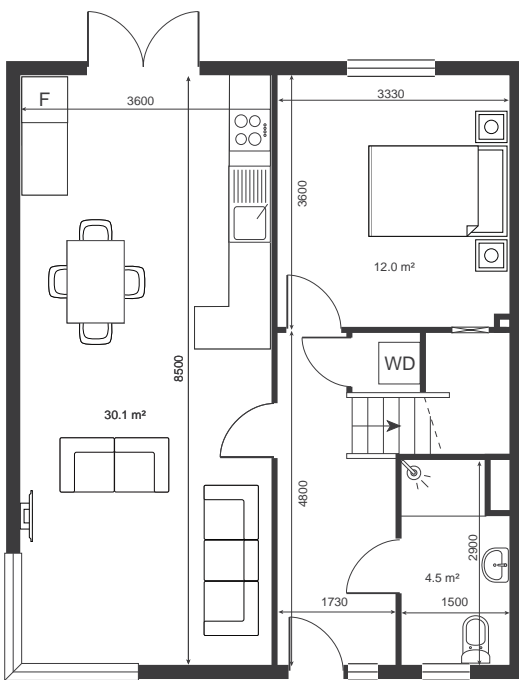
2 Bed

Dormer Bungalow

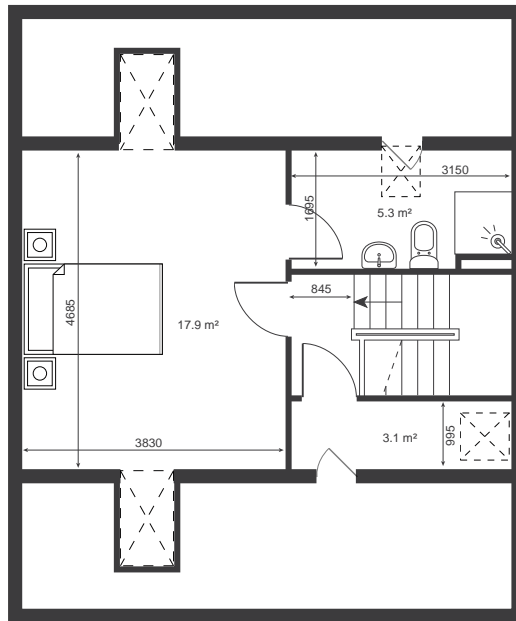
End Terrace - Front Entrance

94.6 sqm | 1018.81 sqft

Our A-rated, energy-efficient homes are designed to lower utility bills and reduce environmental impact, ensuring that every family enjoys long-term savings while creating a legacy of care for generations to come.



GROUND FLOOR



FIRST FLOOR

Illustrative purposes only. All plans and dimensions are for guidance only and may be subject to change. kdmHomes reserves the right to modify layouts, building styles, landscaping, and specifications without prior notice. As a result, the completed home may differ from the details provided.

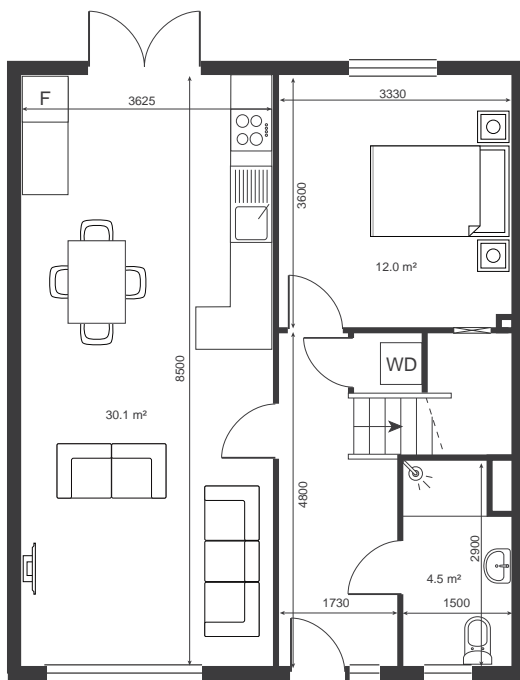
Tumna 2 Storey

2 Bed

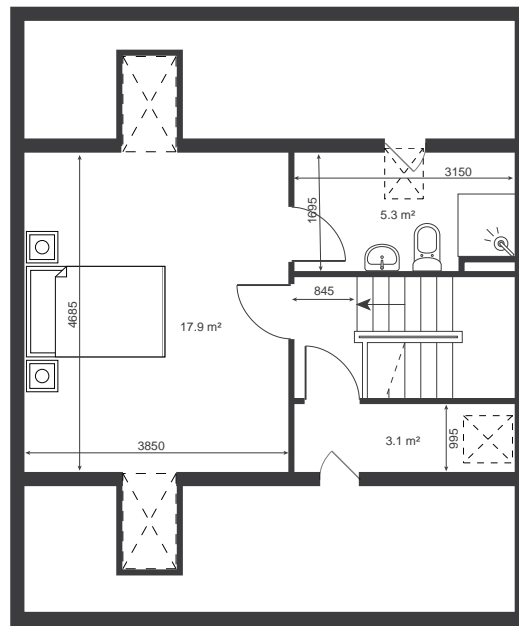
Dormer Bungalow

Mid Terrace - Front Entrance

94.6 sqm | 1018.81 sqft



GROUND FLOOR



FIRST FLOOR

Illustrative purposes only. All plans and dimensions are for guidance only and may be subject to change. kdmHomes reserves the right to modify layouts, building styles, landscaping, and specifications without prior notice. As a result, the completed home may differ from the details provided.

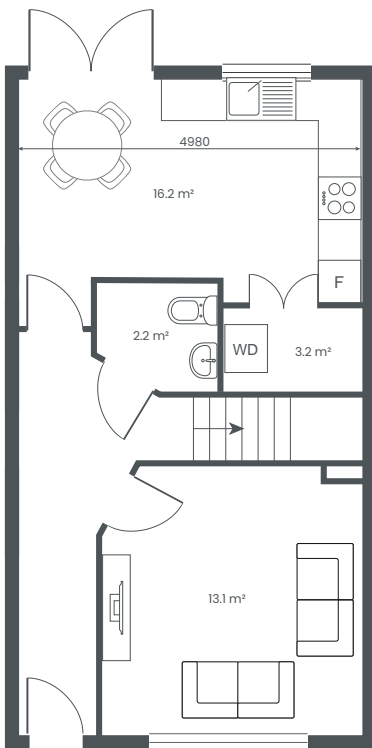
Moylan 2 Storey

2 Bed

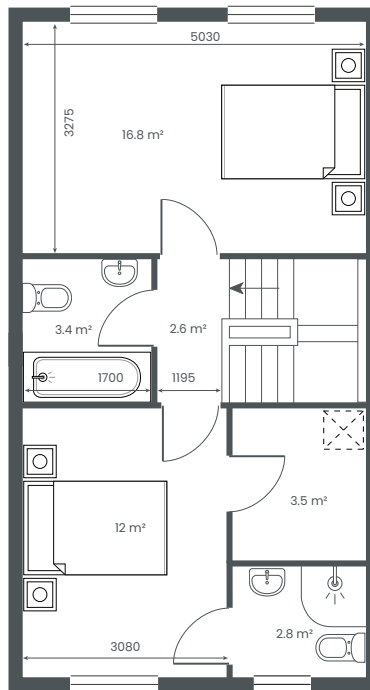
Semi-Detached

Front Entrance

92.2 sqm | 992.83 sqft



GROUND FLOOR



FIRST FLOOR



SECOND FLOOR

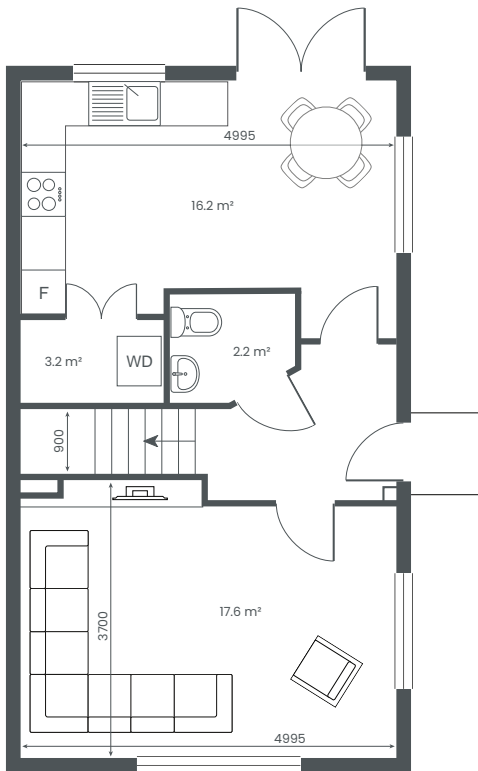
Moylan 2 Storey

2 Bed

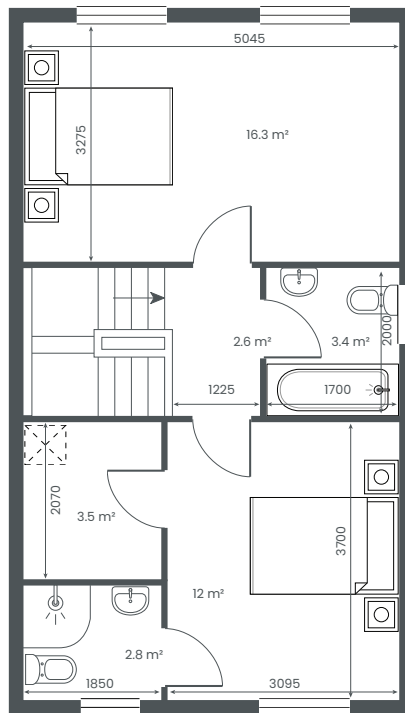
End Terrace

Side Entrance

92.6 sqm | 996.83 sqft



GROUND FLOOR



FIRST FLOOR



SECOND FLOOR

Illustrative purposes only. All plans and dimensions are for guidance only and may be subject to change. kdmHomes reserves the right to modify layouts, building styles, landscaping, and specifications without prior notice. As a result, the completed home may differ from the details provided.

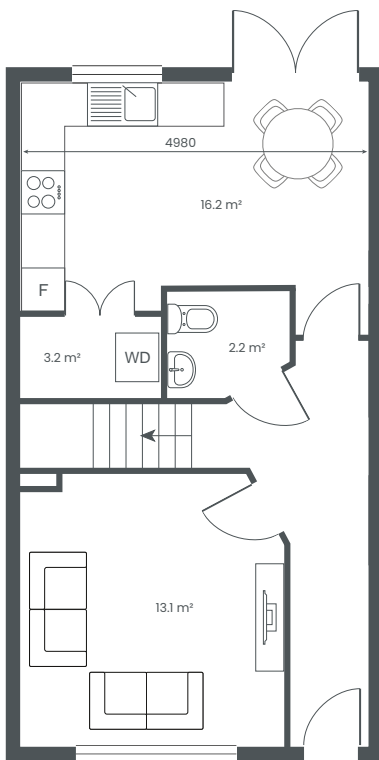
Moylan 2 Storey

2 Bed

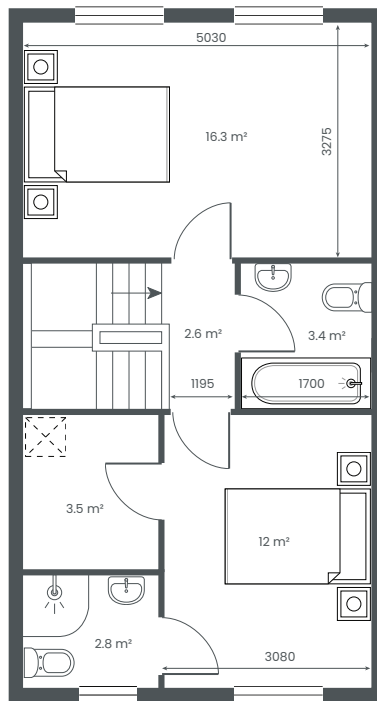
End Terrace

Front Entrance

92.2 sqm | 992.83 sqft



GROUND FLOOR



FIRST FLOOR



SECOND FLOOR

Illustrative purposes only. All plans and dimensions are for guidance only and may be subject to change. kdmHomes reserves the right to modify layouts, building styles, landscaping, and specifications without prior notice. As a result, the completed home may differ from the details provided.

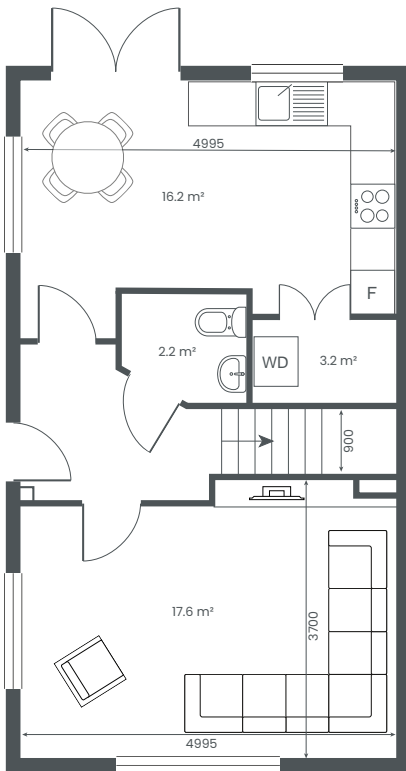
Moylan 2 Storey

2 Bed

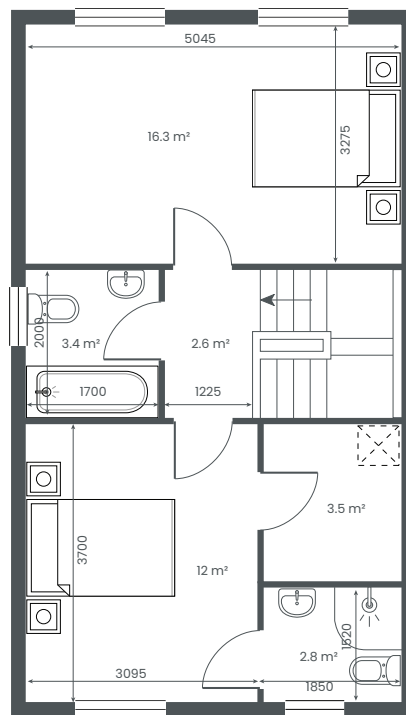
End Terrace

Side Entrance

92.6 sqm | 996.83 sqft



GROUND FLOOR



FIRST FLOOR



SECOND FLOOR

Illustrative purposes only. All plans and dimensions are for guidance only and may be subject to change. kdmHomes reserves the right to modify layouts, building styles, landscaping, and specifications without prior notice. As a result, the completed home may differ from the details provided.

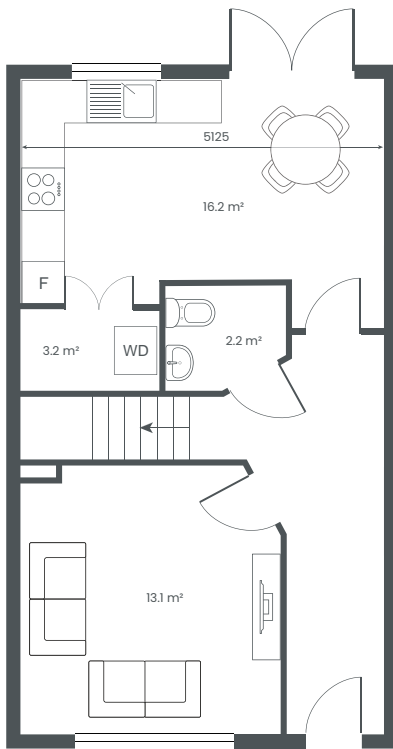
Moylan 2 Storey

2 Bed

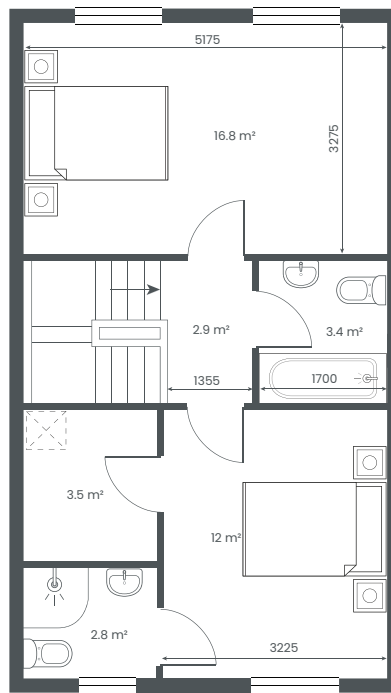
Mid Terrace

Front Entrance

95 sqm | 1022.03 sqft



GROUND FLOOR



FIRST FLOOR



SECOND FLOOR

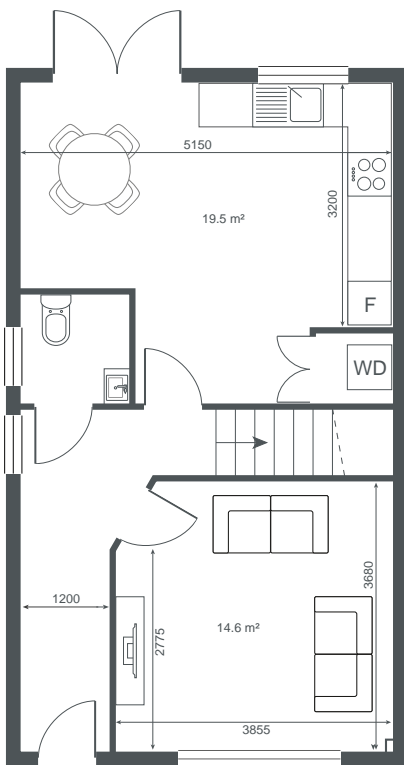
Clonroe 3 Storey

3 Bed

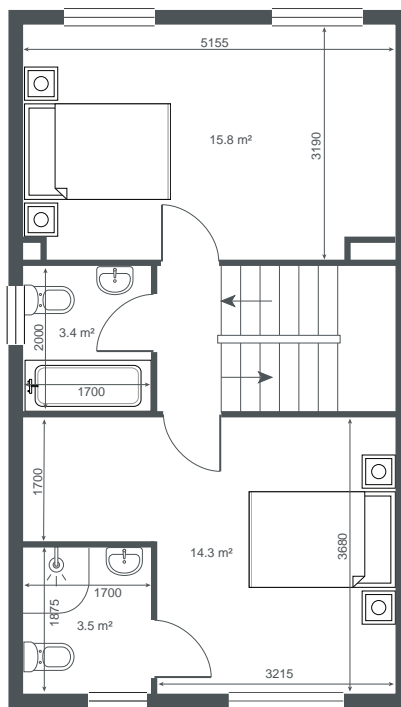
Semi Detached

Front Entrance

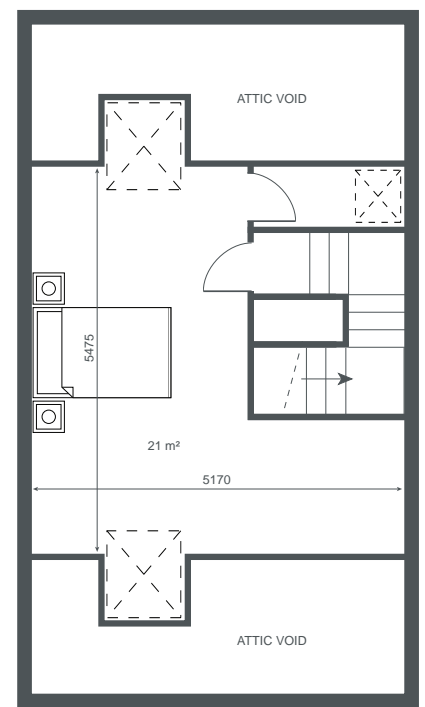
122.8 sqm | 1321.94 sqft



GROUND FLOOR



FIRST FLOOR



SECOND FLOOR

Illustrative purposes only. All plans and dimensions are for guidance only and may be subject to change. kdmHomes reserves the right to modify layouts, building styles, landscaping, and specifications without prior notice. As a result, the completed home may differ from the details provided.

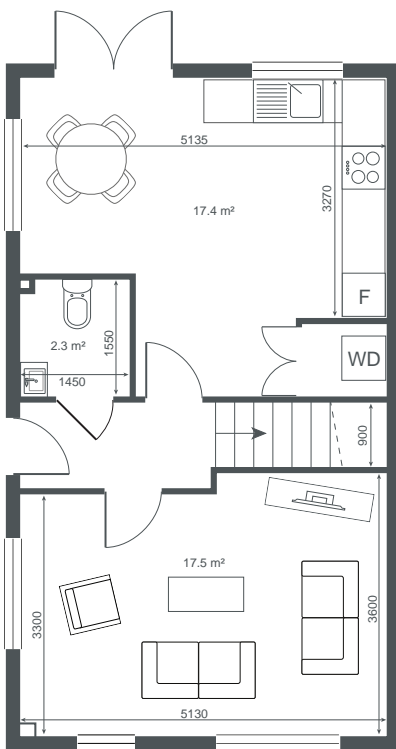
Clonroe 3 Storey

3 Bed

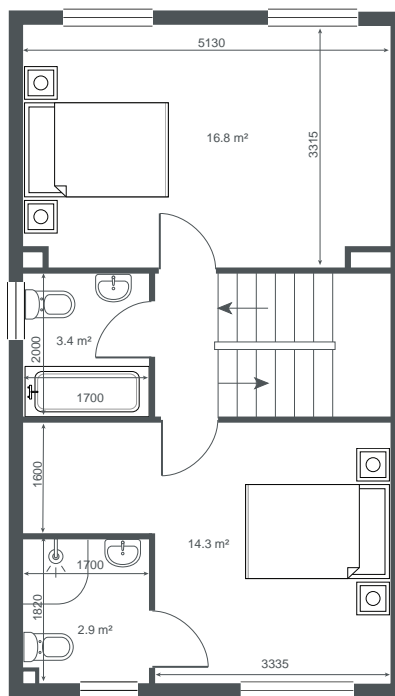
Detached

Side Entrance

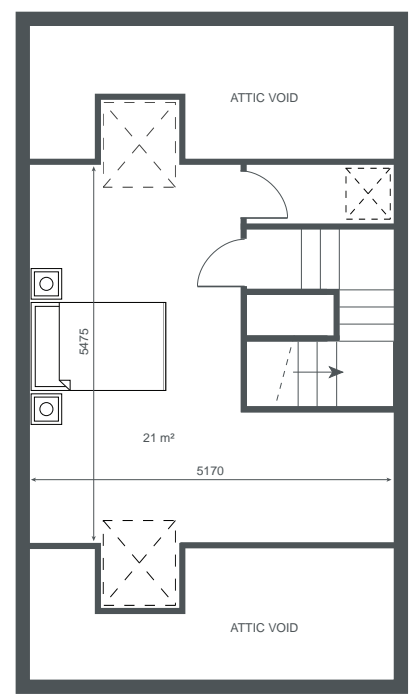
122.2 sqm | 1315.49 sqft



GROUND FLOOR



FIRST FLOOR



SECOND FLOOR

Doonan 2 Storey

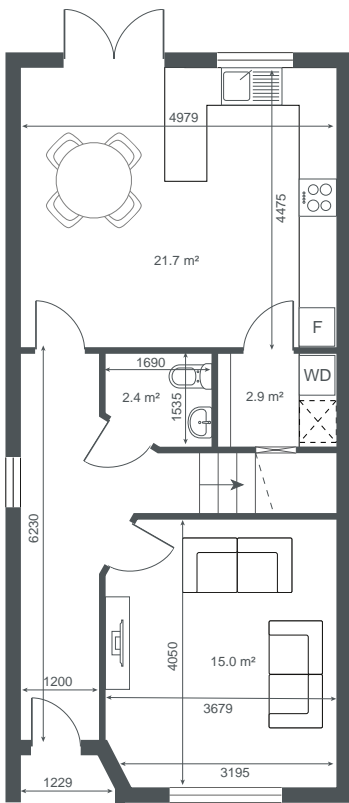
3 Bed

Semi Detached

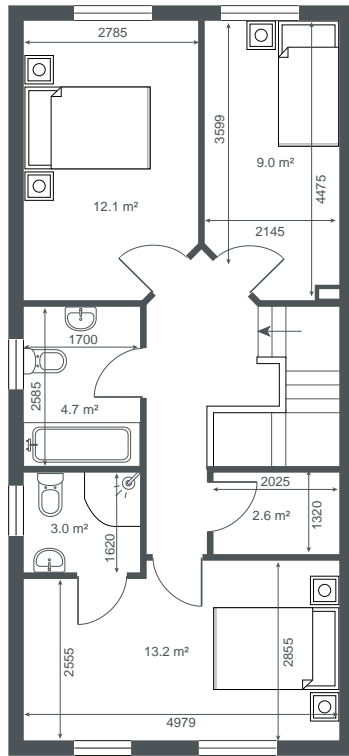
Front Entrance

114.8 sqm | 1235.92 sqft

With a strong reputation built on expertise, precision, and quality, kdmHomes take pride in **delivering homes that not only meet but exceed expectations**; every project reflects our unwavering commitment to detail, superior materials, and timeless craftsmanship.



GROUND FLOOR



FIRST FLOOR



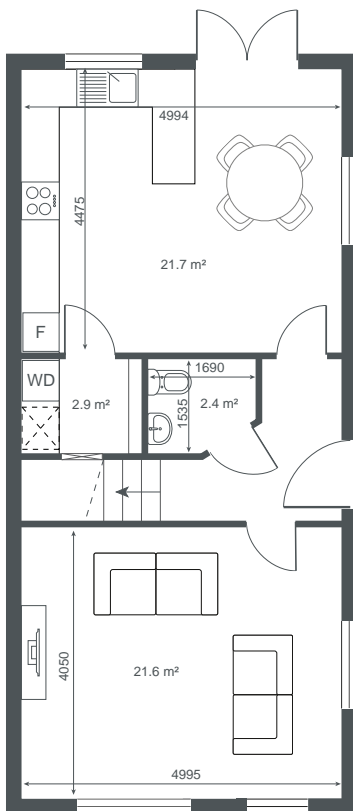
Doonan 2 Storey

3 Bed

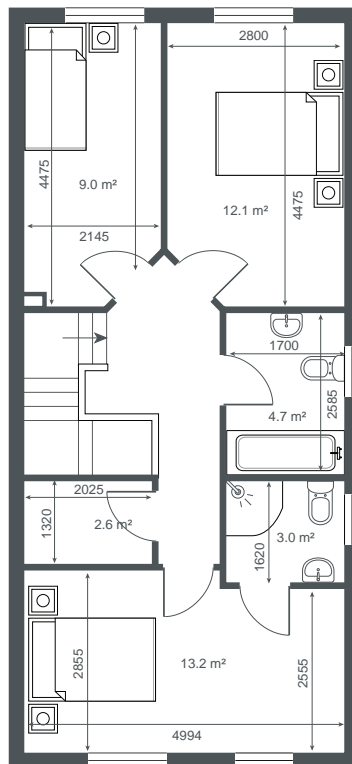
Semi Detached

Side Entrance

116 sqm | 1248.61 sqft



GROUND FLOOR



FIRST FLOOR



Illustrative purposes only. All plans and dimensions are for guidance only and may be subject to change. kdmHomes reserves the right to modify layouts, building styles, landscaping, and specifications without prior notice. As a result, the completed home may differ from the details provided.

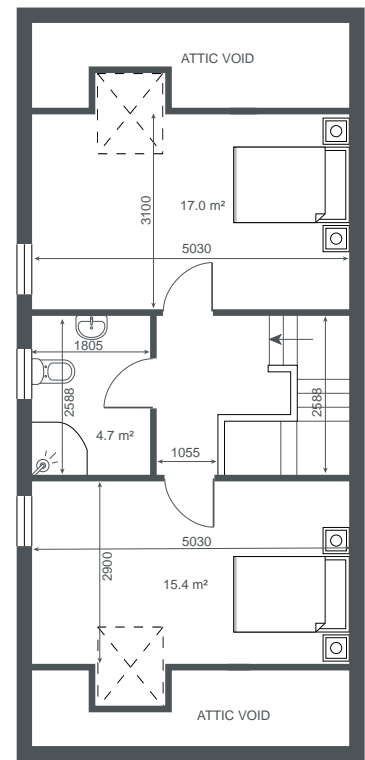
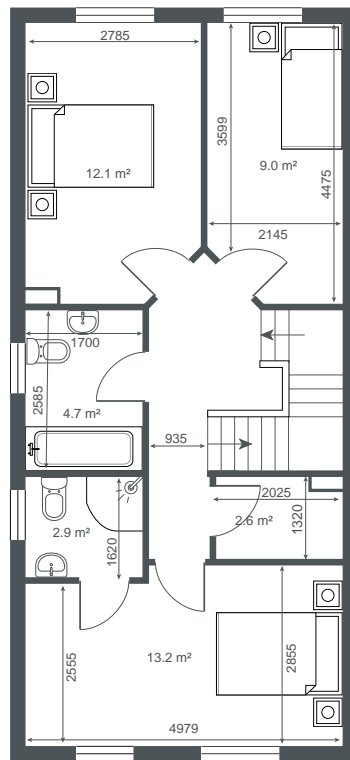
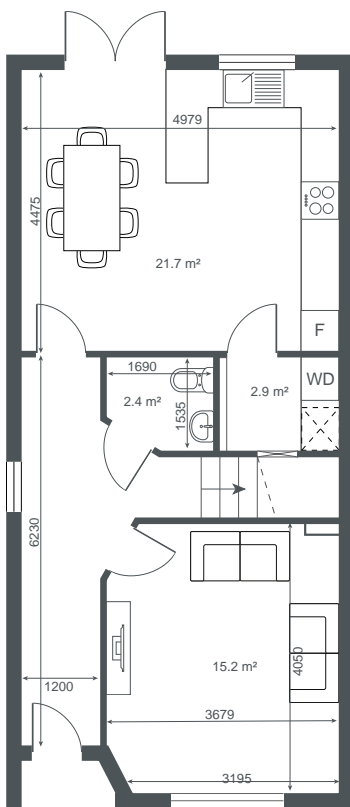
Ardagh 3 Storey

5 Bed

Semi Detached

Front Entrance

160.5 sqm | 1727.88 sqft



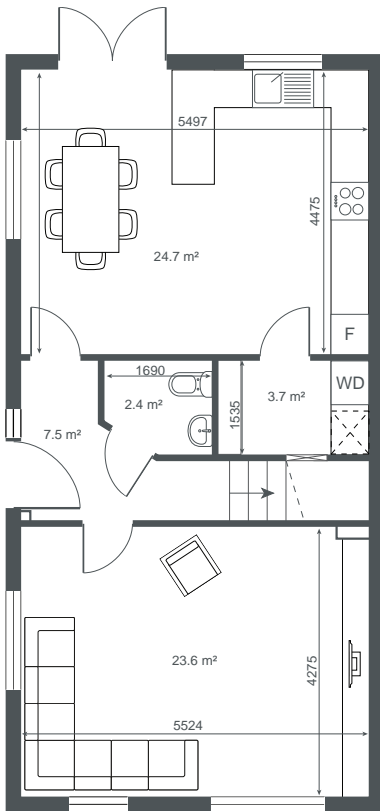
Ardagh 3 Storey

5 Bed

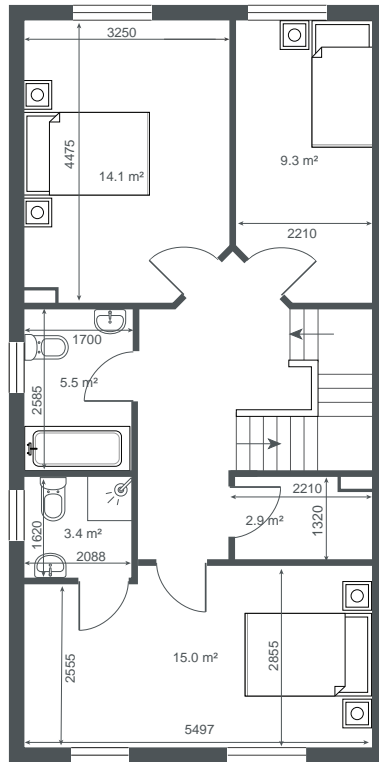
Detached

Side Entrance

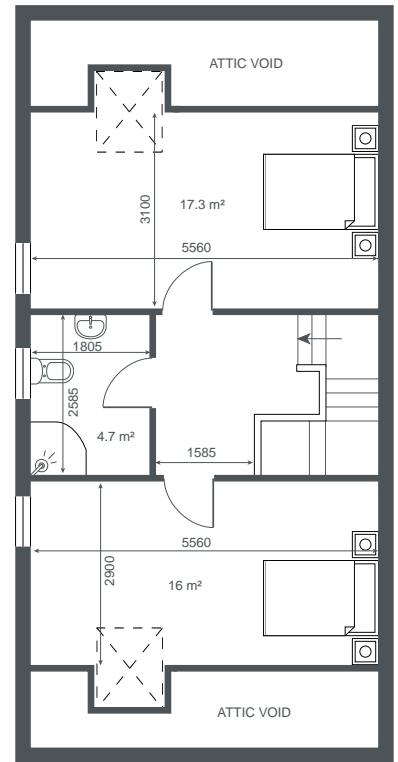
179.1 sqm | 1928.03 sqft



GROUND FLOOR



FIRST FLOOR



SECOND FLOOR

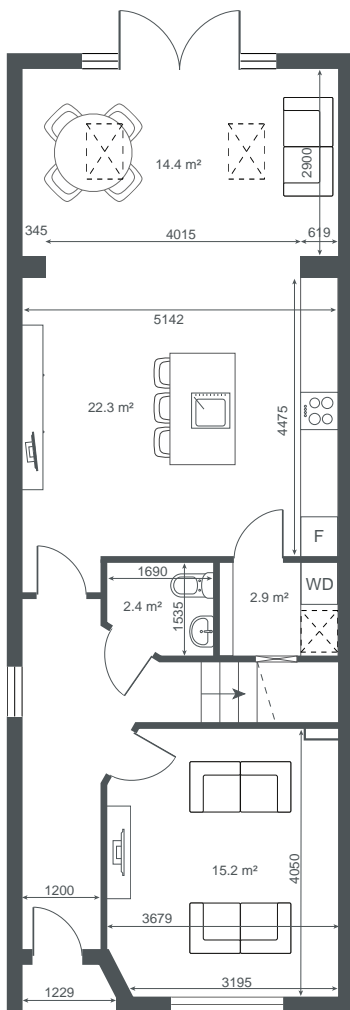
Ardagh 3 Storey - Extended

5 Bed

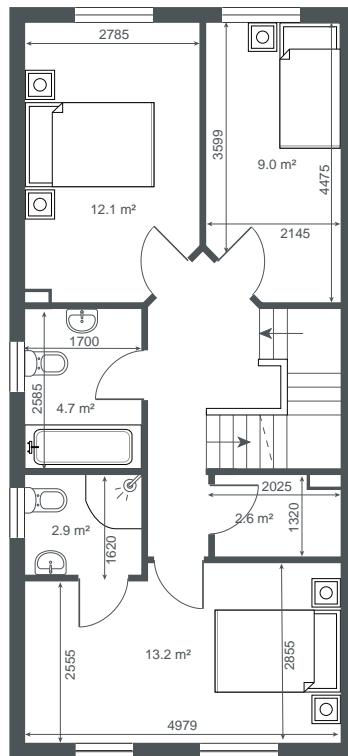
Semi Detached

Front Entrance

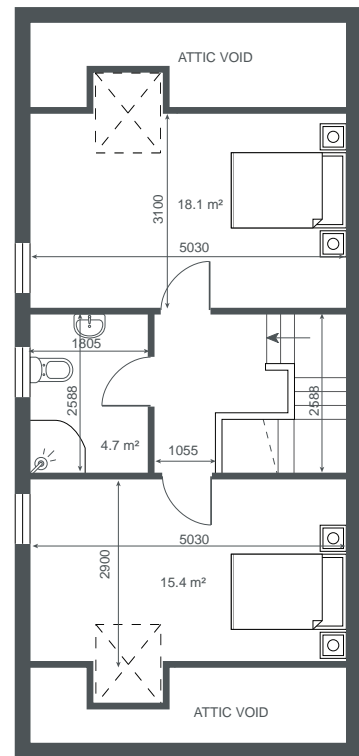
176.9 sqm | 1904.36 sqft



GROUND FLOOR



FIRST FLOOR



SECOND FLOOR

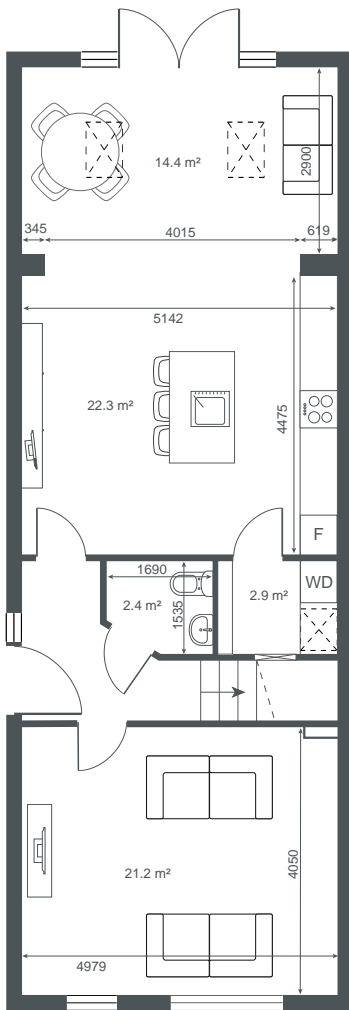
Ardagh 3 Storey - Extended

5 Bed

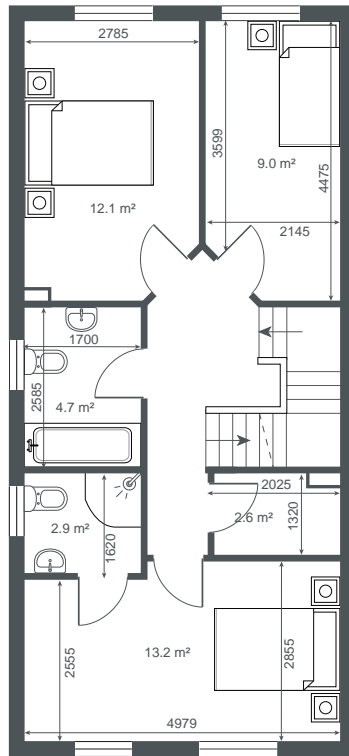
Semi Detached

Side Entrance

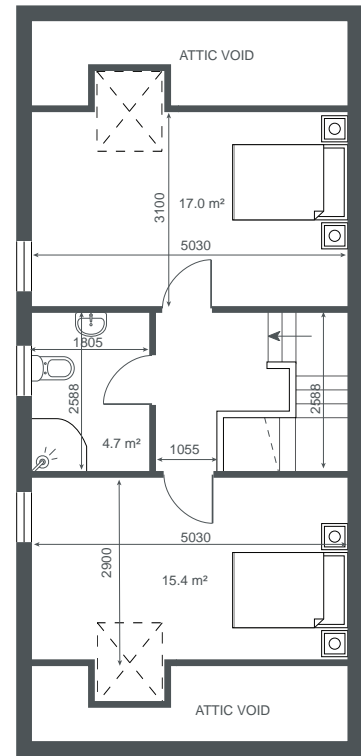
178.1 sqm | 1917.26 sqft



GROUND FLOOR



FIRST FLOOR



SECOND FLOOR

Illustrative purposes only. All plans and dimensions are for guidance only and may be subject to change. kdmHomes reserves the right to modify layouts, building styles, landscaping, and specifications without prior notice. As a result, the completed home may differ from the details provided.





Oakley Meadows is designed to meet the needs of contemporary living, with homes that offer superior construction, sustainability and long-term savings for homeowners.





Oakley Meadows offers homeowners a space designed for modern family life, whether you're a first-time buyer, growing family, or looking to downsize, this development provides a home that adapts to your needs, now and into the future.



Support for the buyer

Government supports for Oakley Meadows homebuyers

Homebuyers at Oakley Meadows, Sligo Town, may benefit from several government support schemes designed to ease the purchase of a new home:

Help to Buy (HTB) Scheme: This provides a tax rebate of up to €30,000 (or 10% of the property value, whichever is lower) to assist with your deposit. It applies to new builds or self-builds and is available to those who have paid income tax in Ireland over the past four years.

First Home Scheme (FHS): A shared equity scheme that helps first-time buyers bridge the gap between their mortgage and the purchase price. The government takes an equity share (up to 30%, or 20% when combined with HTB) with no rent or repayments required while you live in the home.

Government Backed Mortgage: A government-backed mortgage option available to those with incomes below €50,000 (outside Dublin, Cork, and Galway) that can finance up to 90% of the property's value at a fixed interest rate, ensuring affordable, stable repayments.

Each of these supports is designed to make homeownership more accessible for families purchasing a new build in Sligo.

First-Time Buyers?



- Help to Buy Scheme – Up to €30,000 tax rebate for first-time buyers
- First Home Scheme
- Government-backed equity support

See www./kdm.ie/support-schemes/





A place to **belong.**

Click on the link below and a member of our team will be in touch.

Register your interest here 

Or contact us on:

e: oakleymeadows@kdm.ie

t: +353 87 032 4024

Crafting Homes, Building Communities.

kdmHomes Disclaimer

The information contained in this document, including any plans, descriptions, images, specifications, or dimensions, or communicated to prospective buyers are indicative, are for illustrative purposes only and serves as a general guide for prospective buyers. Images shown are of a previous showhouse completed by kdmHomes and represent a similar standard of design and finish. Any such information, whether provided in writing, verbally, or otherwise, should not be relied upon as the basis for any offer or contract and does not constitute a statement of fact, representation, or warranty. All plans are not to scale, and measurements or areas provided are estimates only and subject to change. Prospective buyers are responsible for conducting their own enquiries and verifying the accuracy of all information through inspection or other means.

kdmHomes reserves the right to make changes to designs, features, finishes, and specifications. As a result, the completed home may differ from the information provided. Details regarding transport, local amenities, and surrounding infrastructure are indicative only and may be subject to change.

Please refer to your contract pack (if applicable) for further information on any matters not covered in this document. kdmHomes does not authorise agents or staff to make any representation or warranty regarding this development. All statements in this document are provided without liability on the part of kdmHomes.

kdm
homes