



BER C3

4 The Woodlands, Castletown, Celbridge, Co. Kildare

- Coonan Property proudly presents a rare opportunity to acquire a home on a substantial site, positioned on the edge of the beautiful Castletown House Parklands and just a short stroll from Celbridge town centre
- Accommodation includes an entrance hallway, living room, kitchen/dining area, three bedrooms and bathroom
- The generous south-facing rear garden extends to approx. 25m (82ft) and offers excellent potential to further extend or develop, subject to the necessary planning permission
- Enjoy a stunning outlook with a mature treeline backdrop along the main avenue to Castletown House, with direct access to this exceptional parkland setting on the banks of the River Liffey
- Celbridge Town Centre, along with a wide range of schools, shops, cafés, restaurants and pubs, is all within easy walking distance
- Excellent transport links include local bus services (C4, X27) and the L59 route providing direct access to Hazelhatch Train Station
- The property is just a five-minute drive from the M4, offering easy access to Dublin City Centre, the M50 and beyond
- A truly unique home in a prime location, offering outstanding potential to create a superb family residence

**3 bedroom home
extending to approx.
90 sq.m (969 sq.ft)**

Guide Price:

€425,000

Private Treaty

Accommodation

Coonan
PROPERTY

Entrance
Hallway

**3.7m x 1.4m,
4.3m x 2m**

Tiled flooring from porch to hallway, fitted lights and hot press.

Living Room

3.5m x 6.7m

Carpet flooring, coved ceiling, fitted lights, feature fireplace with marble surround and hearth, radiator cover, fitted curtains and blinds.

Kitchen/Dining
Area

3.5m x 5.4m

Tiled flooring and splash back, sink, washing machine, dryer, fridge/freezer, double oven and light fitting.



Accommodation



Master
Bedroom
(Front)

3.5m x 3.4m

Carpet flooring, fitted wardrobes, hanging pendant light with shades, fitted curtains and blinds.

Bedroom 2
(Rear)

3m x 3.5m

Lino flooring, hanging pendant light with shades, fitted wardrobe and blinds.



Accommodation

Coonan
PROPERTY

Bedroom 3
(Rear)

2.4m x 2.3m

Laminate flooring and hanging pendant light with shades.

Family
Bathroom

2.4m x 1.8m

Tiled flooring, bathtub, w.c., w.h.b., light fitting and access to attic.

Garden

26.5m x 15.2m

Side entrance, block shed, PVC fascia & soffit and an outdoor tap.



Accommodation

Coonan
PROPERTY

Additional Information:

Gross internal floor area approx. 89.8 sq.m.
Year of construction 1984
South facing rear garden
Large driveway – space for 3 cars
Mature estate
Located on a cul-de-sac
Direct access to Castletown Demesne and Parklands

Services:

Mains water
Oil fire central heating

Items Included in sale:

Sold as Seen



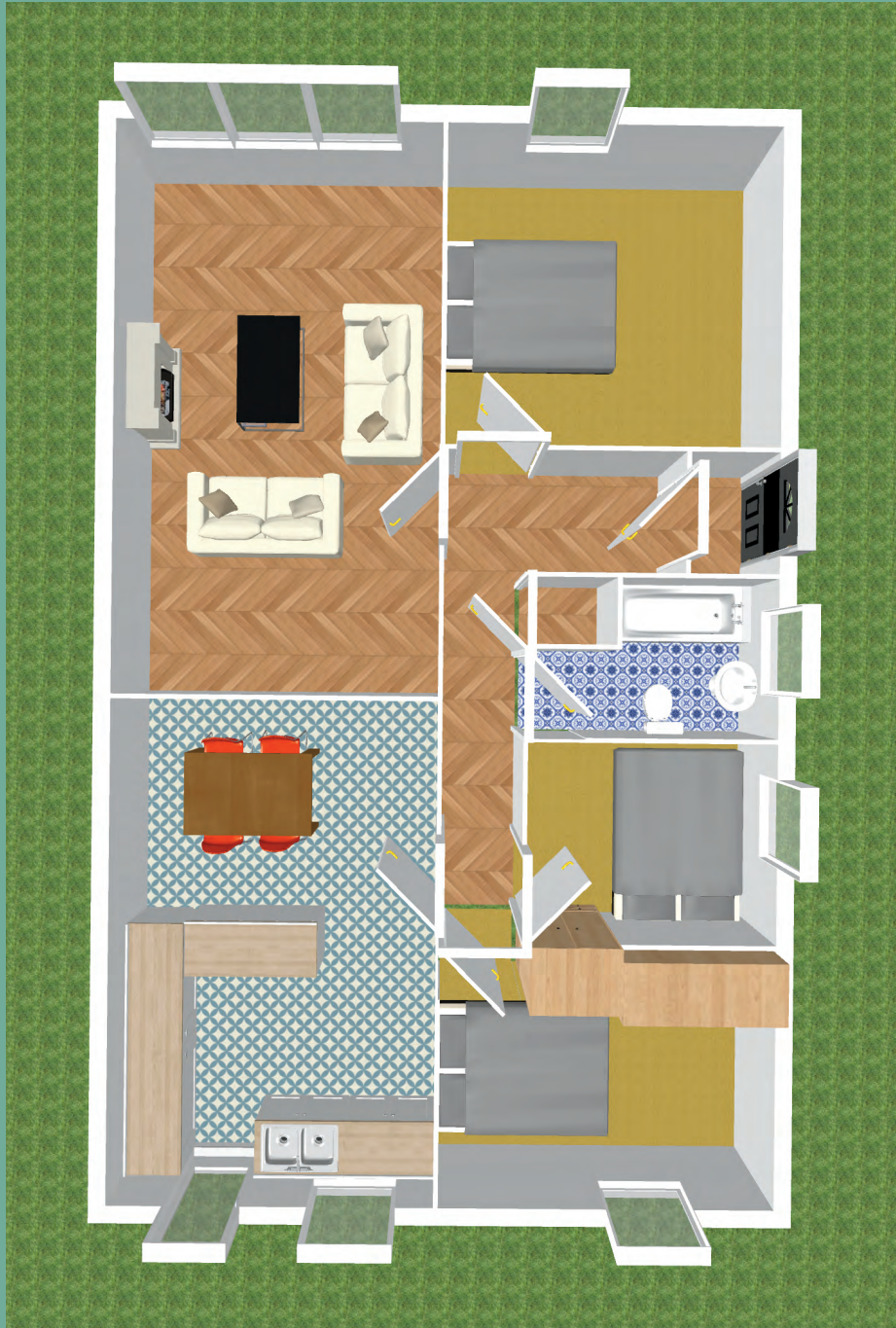
Accommodation

Coonan
PROPERTY



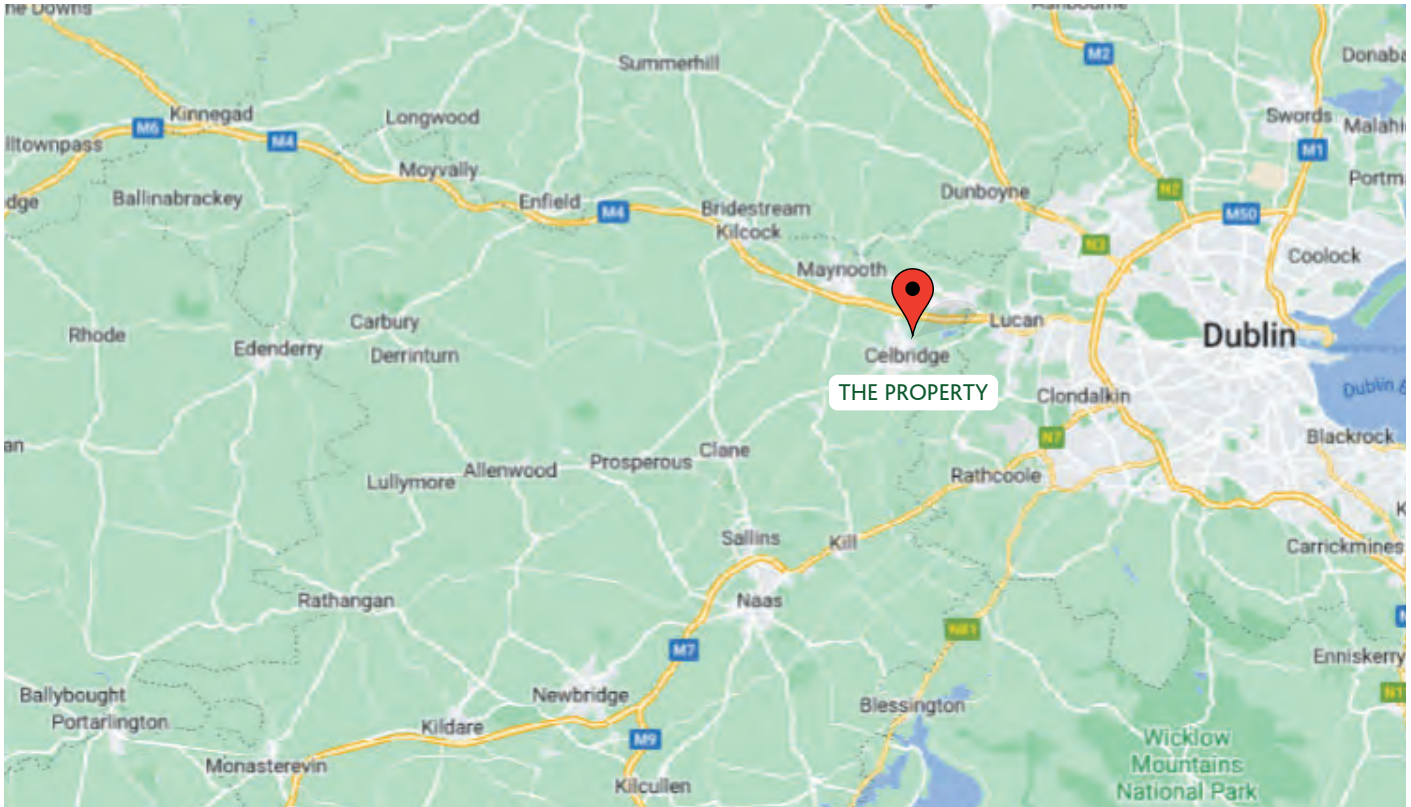
Floor Plans

Coonan
PROPERTY



Directions

Coonan
PROPERTY



Directions

W23 W268

BER

BER C3

Viewing

By prior appointment at any reasonable hour.

Coonan
PROPERTY

Contact Information:

Mick Wright

01 6288400

mickw@coonan.com

PSRA No.: 003764.

The above particulars are issued by Coonan Property on the understanding that all negotiations are conducted through them. Every care is taken in preparing particulars which are issued for guidance only and the firm does not hold themselves responsible for any inaccuracies. All reasonable offers will be submitted to the vendors for consideration but the contents of this brochure shall not be deemed to form the basis of any contract subsequently entered into. The vendor or lessor do not make, give or imply nor is Coonan Property or its staff authorised to make, give or imply any representation or warranty whatsoever in respect of this property.

Coonan
FINANCIAL GROUP

Coonan Mortgage Group Limited t/a Coonan Financial Group is regulated by the Central Bank of Ireland. Registration No.: 431200

For all your mortgage needs contact:

Dermot Horan / Romana Anca

01 505 2718

admin@coonanmortgage.com

coonan.com