



CORNMILL

RATOATH | CO. MEATH

A vibrant lifestyle awaits

Stunning 1 & 2 Bedroom Bungalows

A vibrant lifestyle awaits



Stunning 1 & 2 Bedroom Bungalows

A rare opportunity to acquire a beautifully designed bungalow in the heart of Ratoath Village, offering the perfect balance of space, style, and convenience in a highly sought-after setting.

This elegant A-rated home has been thoughtfully designed for relaxed living, combining quality finishes with a practical, single-level layout ideal for ease of living and long-term comfort. Flooded with natural light, the spacious open-plan kitchen and dining area forms the heart of the home, creating an inviting space for both relaxing and entertaining.

The property features well-proportioned bedrooms, along with a large bathroom with a walk in shower finished to a high standard. Every detail has been carefully considered to deliver comfort, efficiency, and low-maintenance living.

CORNMILL



Effortless Living in an Exceptional Location

This home will particularly appeal to those looking to right-size from a larger family residence, without compromising on quality, space, or location. It offers the opportunity to enjoy a more manageable home while retaining generous accommodation and access to excellent amenities.

Externally, the property benefits from a private garden, and attractive low-maintenance landscaping, making day-to-day living effortless.





Ratoath

Situated just a short stroll from Ratoath village centre, residents enjoy immediate access to shops, cafés, restaurants, schools, and sporting facilities, with excellent transport links to Dublin, Ashbourne, and surrounding areas.

This is a unique opportunity to secure a modern bungalow in a prime village location—ideal for those seeking to simplify their lifestyle while upgrading their quality of living.





CORNMILL

RATOATH | CO. MEATH



The Ash
1 Bedroom
Mid Terrace
c. 589 Sq Ft



The Ash
1 Bedroom
End of Terrace
c. 550 Sq Ft



The Willow
2 Bedroom
End and Mid Terrace
c. 820 Sq Ft



The Willow
2 Bedroom
End Terrace
c. 841 Sq Ft



The Willow
2 Bedroom
End Terrace
c. 860 Sq Ft



The Rowan
2 Bedroom
End and Mid Terrace
c. 735 Sq Ft



The Birch
2 Bedroom
End of Terrace
c. 734 Sq Ft



The Hazel
2 Bedroom
Mid Terrace
c. 758 Sq Ft

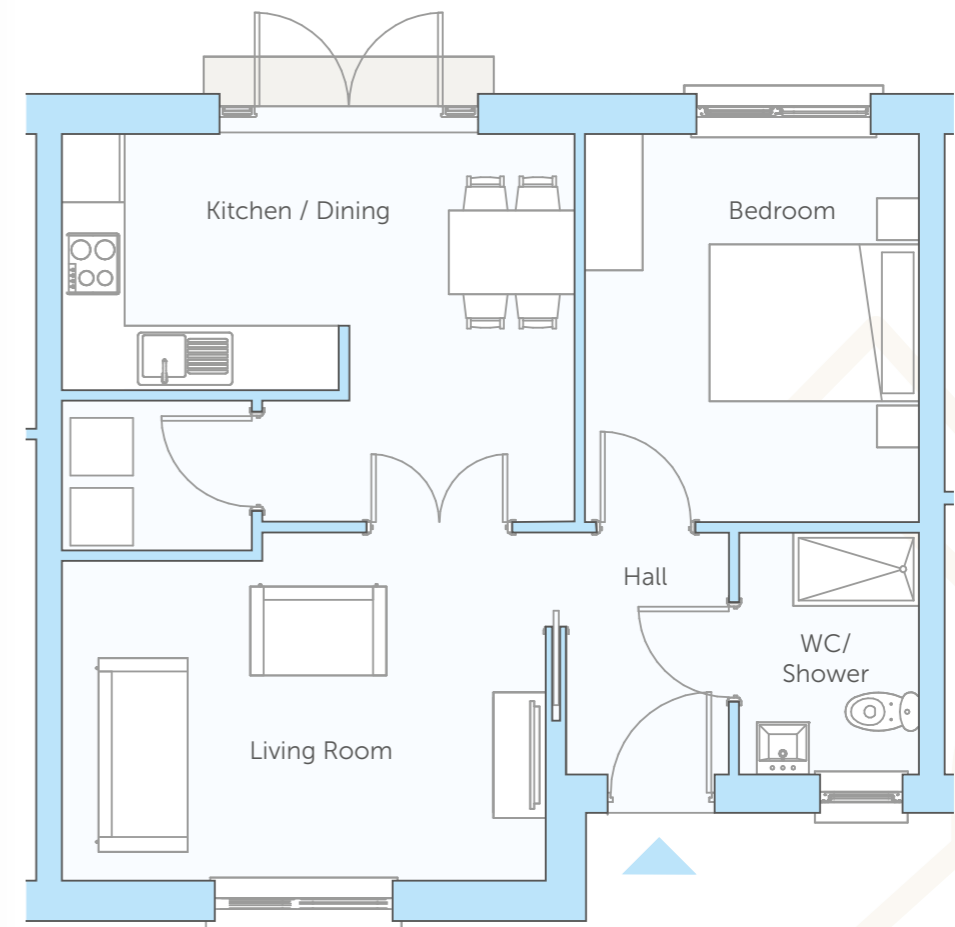


Please speak to a sales agent for any queries. The Site Plan is intended for illustrative purposes only. Construction and landscaping details are subject to change in the course of development. Trees, planting and the open areas shown are indicative only and the final number and location may vary. The developer reserves the right to alter the layout, landscaping, and specifications at any time without notice. The Site Plan does not constitute or form part of an offer or contract nor may it be regarded as a representation.



The Ash

1 Bedroom Mid Terrace (No. 11)
c. 589 Sq Ft

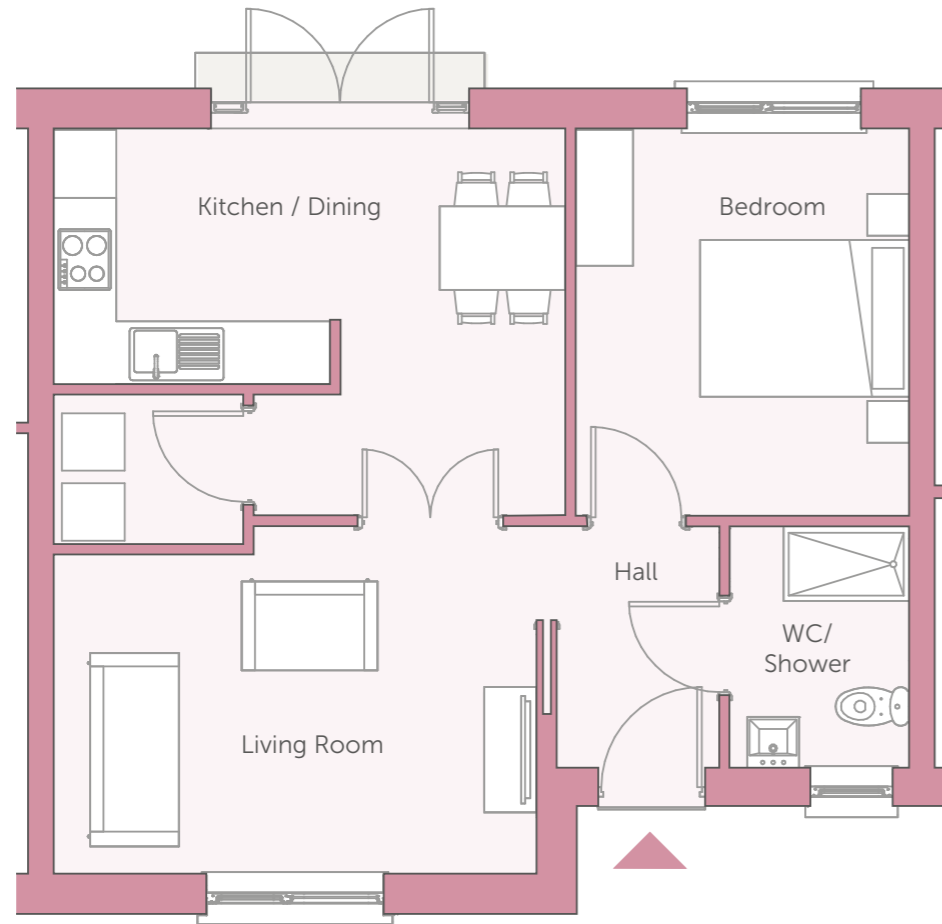


Please note: Floor plans, room areas, and dimensions are indicative only and subject to change. In line with our policy of continuous improvement, we reserve the right to alter the layout, building style, landscaping, and specifications at any time without notice. Window placements and certain features may vary. For full details, please contact the Selling Agent for further information or clarification.



The Ash

1 Bedroom End of Terrace (No. 13)
c. 550 Sq Ft

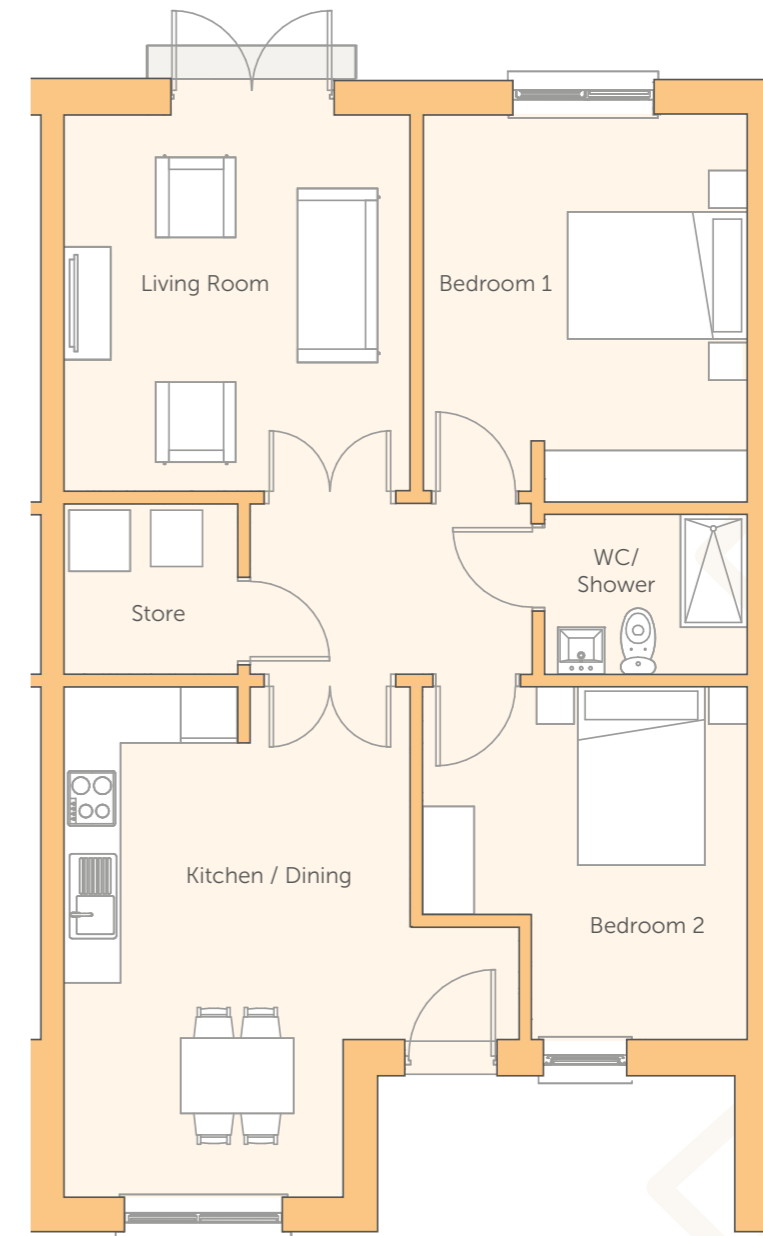


Please note: Floor plans, room areas, and dimensions are indicative only and subject to change. In line with our policy of continuous improvement, we reserve the right to alter the layout, building style, landscaping, and specifications at any time without notice. Window placements and certain features may vary. For full details, please contact the Selling Agent for further information or clarification.



The Willow

2 Bedroom End and Mid Terrace (No. 1 - 6, 16 & 17)
c. 820 Sq Ft

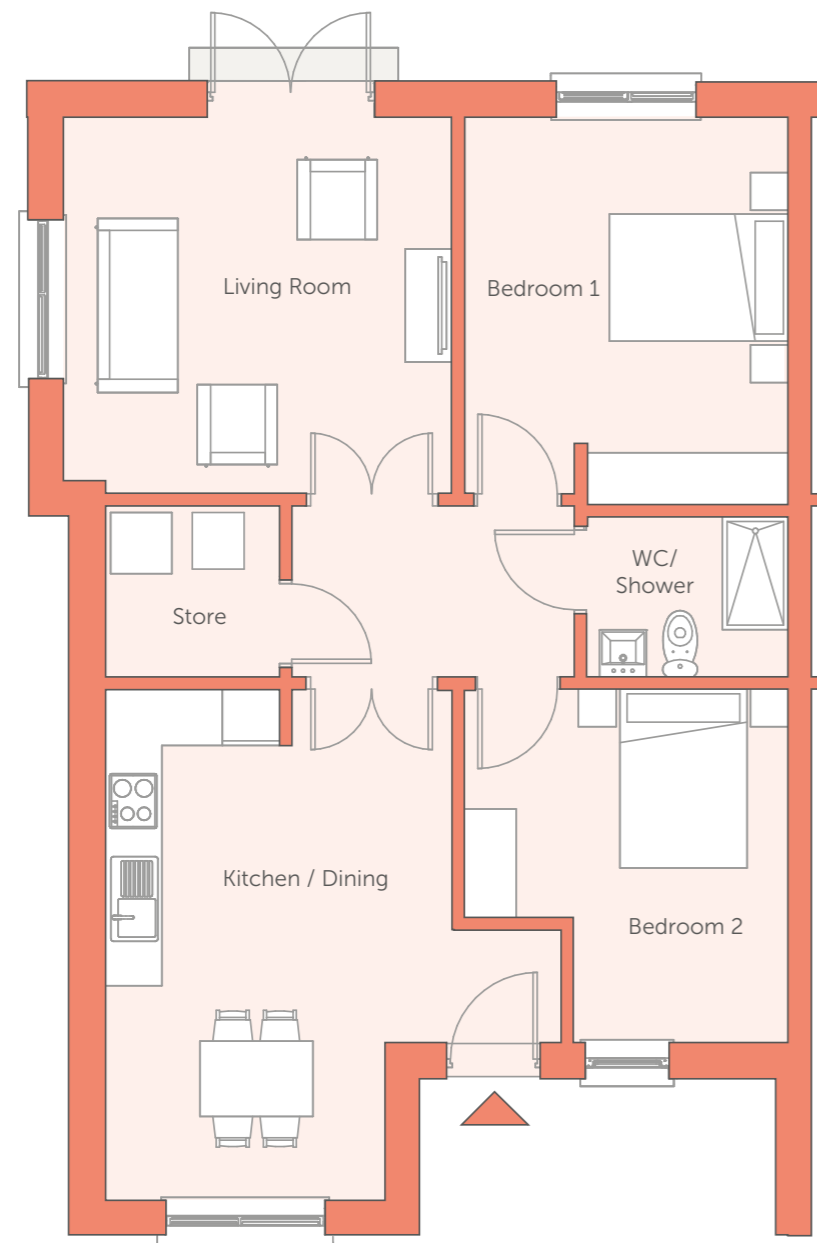


Please note: Floor plans, room areas, and dimensions are indicative only and subject to change. In line with our policy of continuous improvement, we reserve the right to alter the layout, building style, landscaping, and specifications at any time without notice. Window placements and certain features may vary. For full details, please contact the Selling Agent for further information or clarification.



The Willow

2 Bedroom End Terrace (No. 15)
c. 841 Sq Ft

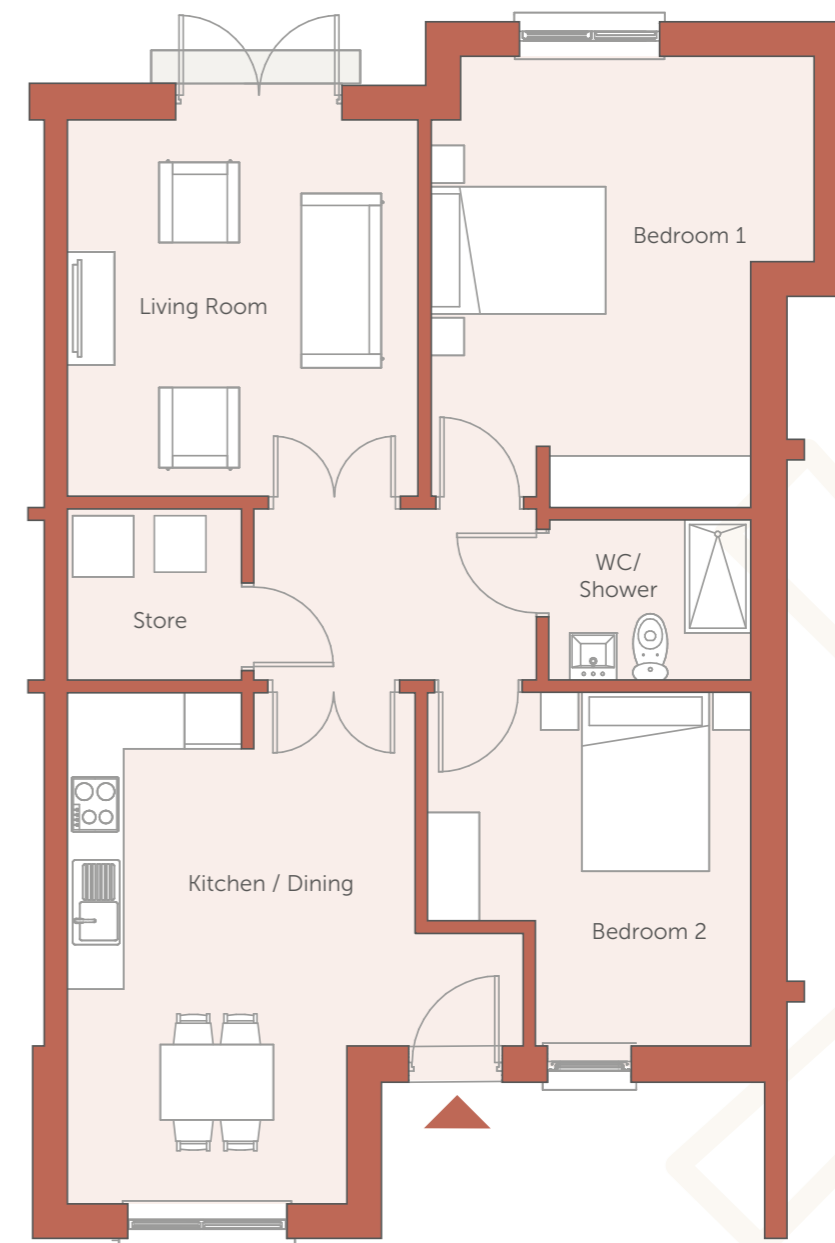


Please note: Floor plans, room areas, and dimensions are indicative only and subject to change. In line with our policy of continuous improvement, we reserve the right to alter the layout, building style, landscaping, and specifications at any time without notice. Window placements and certain features may vary. For full details, please contact the Selling Agent for further information or clarification.



The Willow

2 Bedroom End Terrace (No. 18)
c. 860 Sq Ft

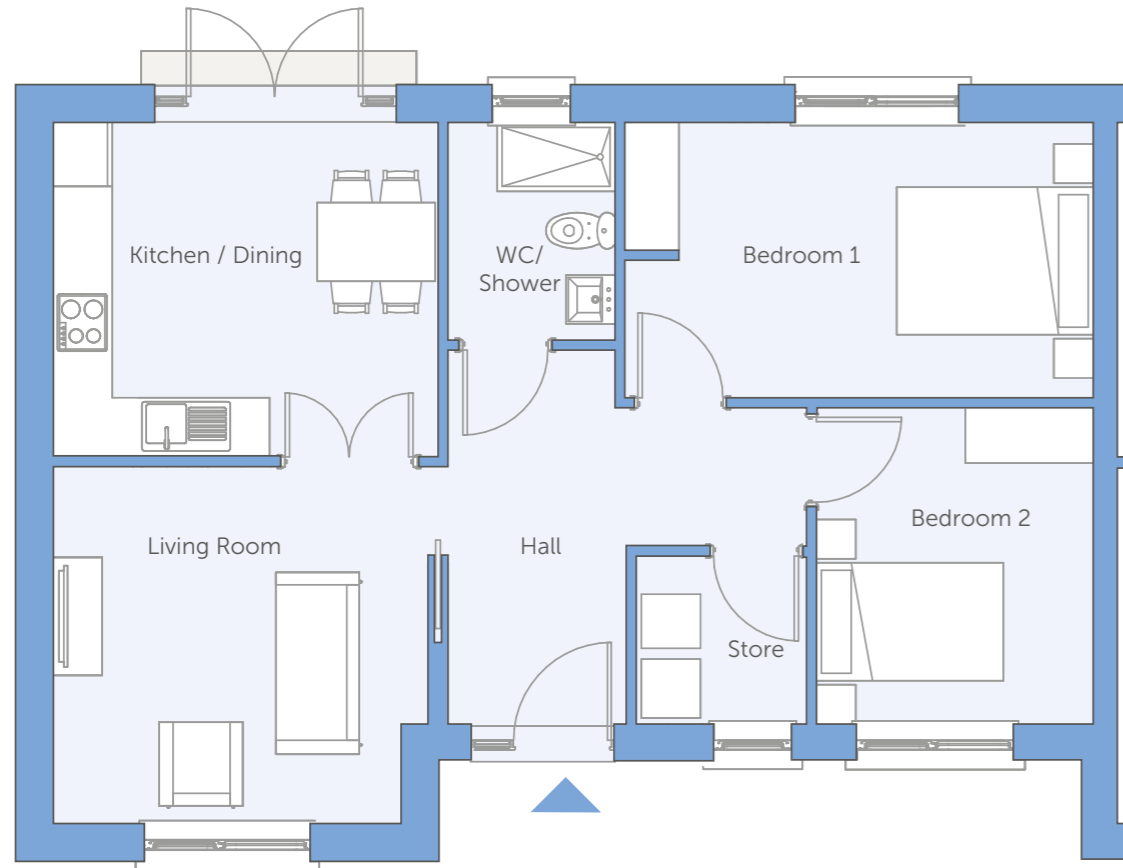


Please note: Floor plans, room areas, and dimensions are indicative only and subject to change. In line with our policy of continuous improvement, we reserve the right to alter the layout, building style, landscaping, and specifications at any time without notice. Window placements and certain features may vary. For full details, please contact the Selling Agent for further information or clarification.



The Rowan

2 Bedroom End and Mid Terrace (No. 7, 8, 9 & 14)
c. 735 Sq Ft

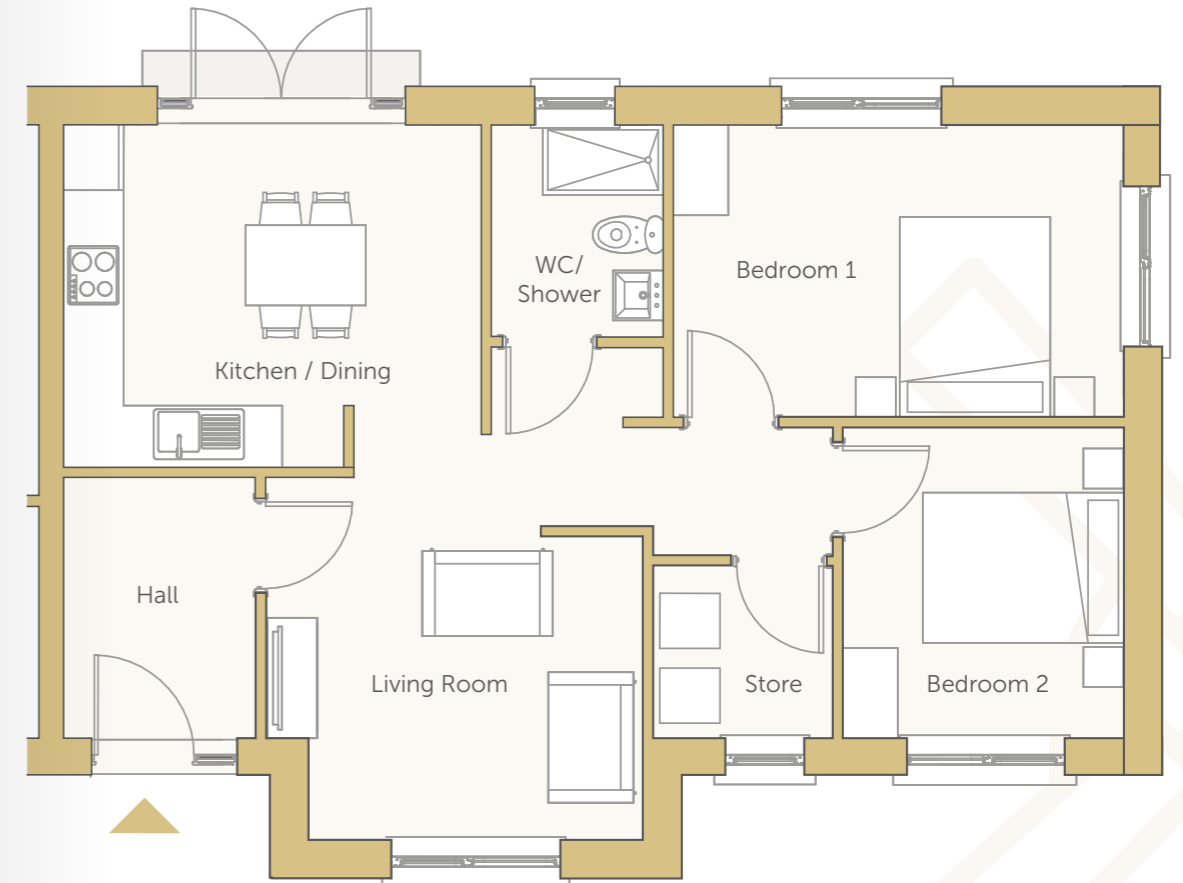


Please note: Floor plans, room areas, and dimensions are indicative only and subject to change. In line with our policy of continuous improvement, we reserve the right to alter the layout, building style, landscaping, and specifications at any time without notice. Window placements and certain features may vary. For full details, please contact the Selling Agent for further information or clarification.



The Birch

2 Bedroom End of Terrace (No. 12)
c. 734 Sq Ft



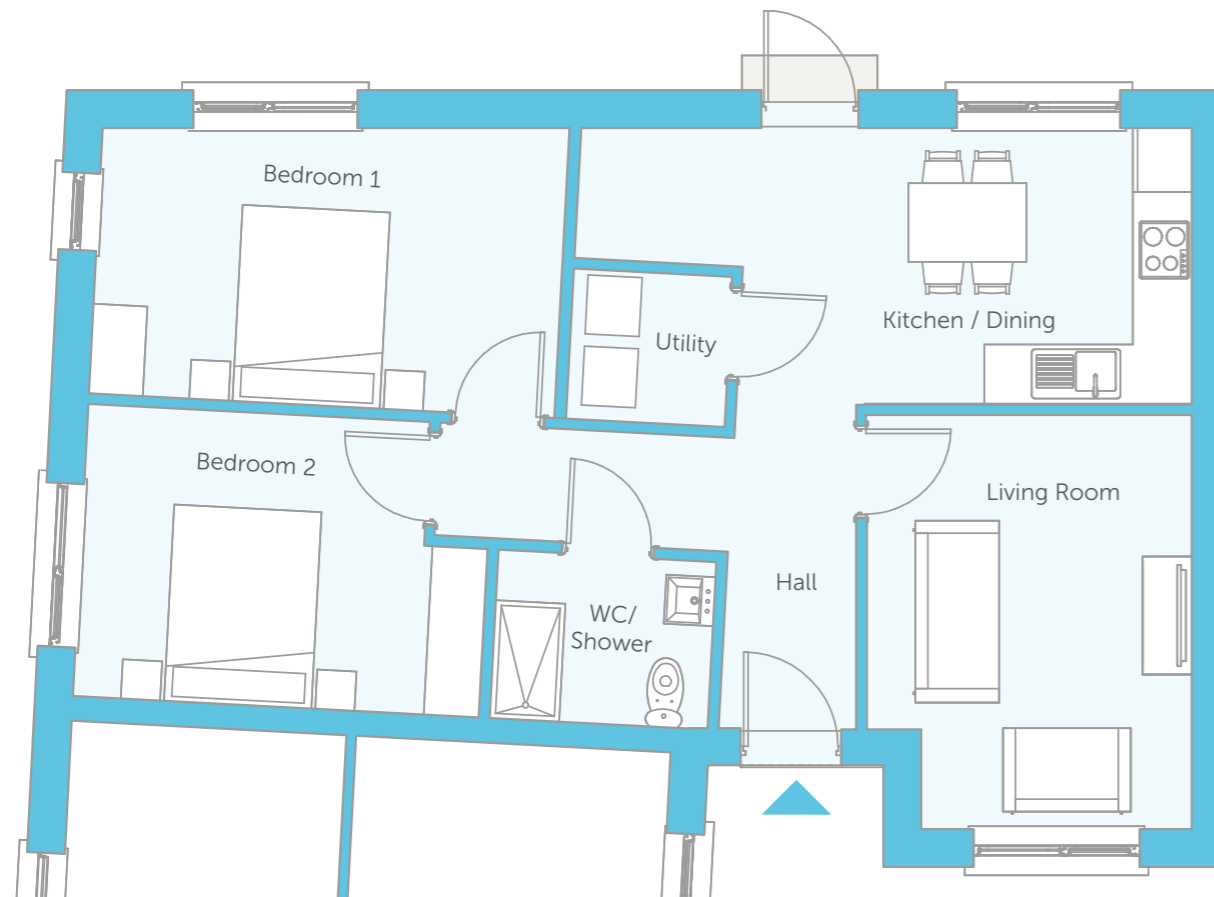
Please note: Floor plans, room areas, and dimensions are indicative only and subject to change. In line with our policy of continuous improvement, we reserve the right to alter the layout, building style, landscaping, and specifications at any time without notice. Window placements and certain features may vary. For full details, please contact the Selling Agent for further information or clarification.



The Hazel

2 Bedroom Mid Terrace (No. 10)

c. 758 Sq Ft



Specifications

External Features

- Maintenance free, mix of brick and render exteriors
- PVC fascia, gutters and downpipes
- Future Proof PVC A rated windows
- Future Proof PVC Patio doors to rear garden
- Ultra tech front door
- Back gardens are top soiled and seeded with timber panel and concrete post fencing
- Wiring for external lighting to front & rear

Internal Finishes

- Walls painted throughout in white
- Quality interior joinery to include painted doors, skirting, architraves

Electrical & Heating

- Exhaust Air Heat Pump System
- Generous lighting and power points throughout
- Smoke detectors and heat detectors fitted as standard
- Wired for TV, telephone and broadband

Kitchens & utility

- Superb contemporary fitted kitchen
- Fitted extractor fan
- Utility room plumbed for washing machine

Bathroom

- Stylish contemporary sanitary ware to bathroom with walk in shower
- Tiling in bathrooms as per show house

Wardrobes

- Fitted wardrobe in second bedroom

Energy Efficiency

- All homes are A-rated and incorporate sustainable and renewable technology resulting in lower energy costs
- All houses are constructed to provide a high level of air tightness in order to retain heat

Guarantee

- 10 year Homebond structural guarantee

Please note: Floor plans, room areas, and dimensions are indicative only and subject to change. In line with our policy of continuous improvement, we reserve the right to alter the layout, building style, landscaping, and specifications at any time without notice. Window placements and certain features may vary. For full details, please contact the Selling Agent for further information or clarification.





CORNMILL

RATOATH | CO. MEATH

www.cornmill.ie

Agent

00353 835 7089
DNG
TORMEYLEE
01 835 7089

tormylee@dng.ie

PSL No. 003940

Developer


LEAFEND LTD



These particulars are for guidance purposes only, do not form part of any contract and should not be relied upon as statements of fact. The Vendor, their advisors (and associated companies) shall not be held responsible for any inaccuracies. The developer reserves the right to make alterations to design and finish. DNG Tormylee issue these particulars on the understanding that all the negotiations are conducted through them. These particulars do not constitute, nor constitute any part of, an offer or contract. All statements, descriptions, dimensions, references to condition, permissions or licenses of use or occupation, access and other details are for guidance only and are made without responsibility on the part of DNG Tormylee or the vendor/landlord. None of the statements contained in these particulars, as to the property are to be relied upon as statements or representations of fact and any intending purchaser should satisfy themselves (at their own expense) as to the correctness of the information given. Prices are quoted exclusive of VAT (unless otherwise stated) and all negotiations are conducted on the basis that the purchaser shall be liable for any VAT arising on the transaction. The Vendor does not make or give, and neither DNG Tormylee or any of their employees has any authority to make or give any representation or warranty whatsoever in respect of this property.