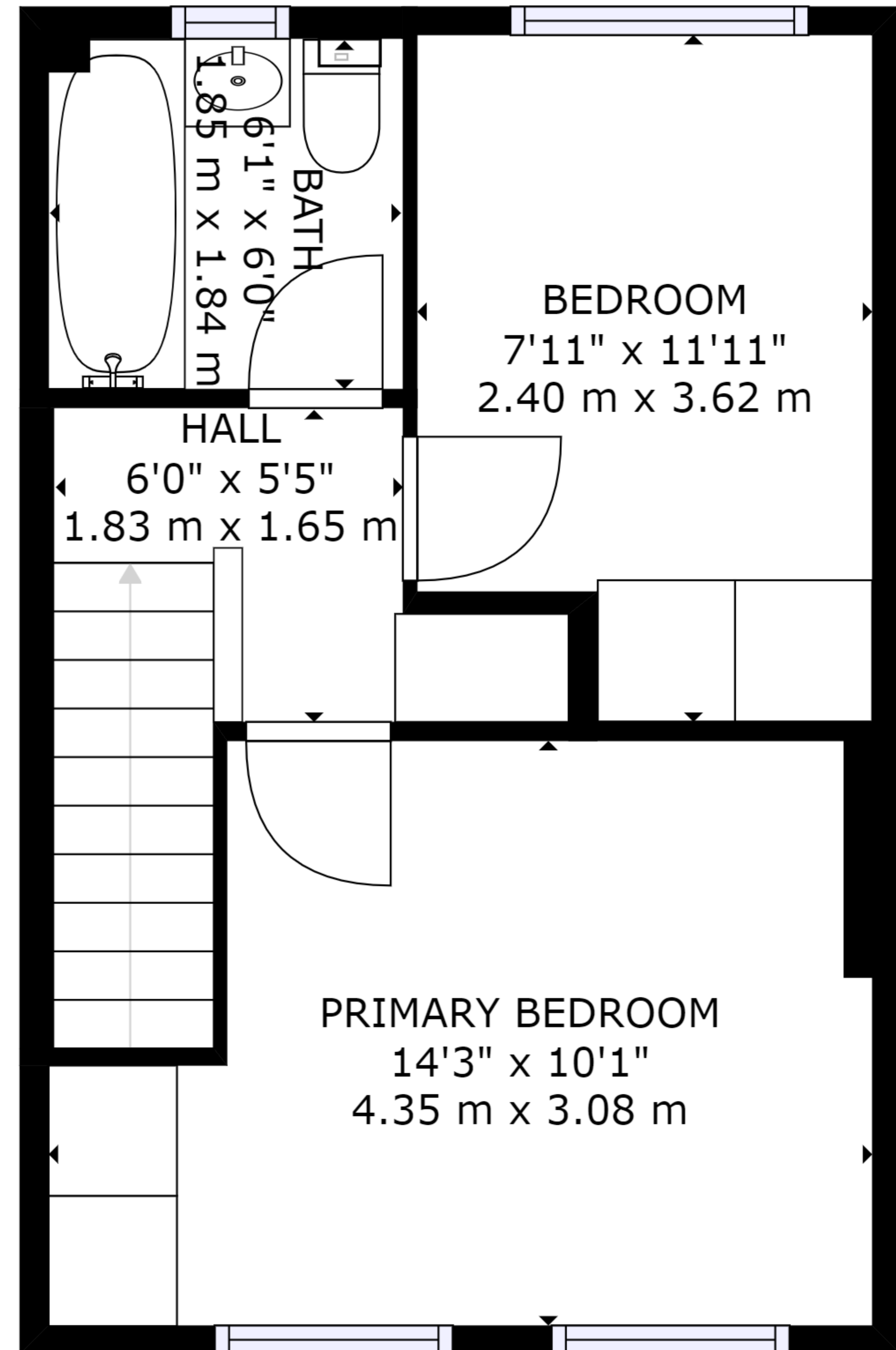


EAT-IN KITCHEN
 14'1" x 8'10"
 4.28 m x 2.69 m

LIVING ROOM
 11'1" x 12'10"
 3.39 m x 3.91 m

FOYER

FLOOR 1



BATH
 6'1" x 6'0"
 1.85 m x 1.84 m

BEDROOM
 7'11" x 11'11"
 2.40 m x 3.62 m

HALL
 6'0" x 5'5"
 1.83 m x 1.65 m

PRIMARY BEDROOM
 14'3" x 10'1"
 4.35 m x 3.08 m

FLOOR 2

GROSS INTERNAL AREA
 FLOOR 1: 318 sq. ft, 30 m², FLOOR 2: 317 sq. ft, 29 m²
 TOTAL: 635 sq. ft, 59 m²
 SIZES AND DIMENSIONS ARE APPROXIMATE, ACTUAL MAY VARY.