



Arms of the de Meppershall Family

MEPPERSHALL MESSENGER



FEBRUARY 2009

Meppershall Village Website: www.meppershall.org

THE MEPPERSHALL MESSENGER

CONTRIBUTIONS

The editor welcomes contributions to the Messenger, whether as letters, articles or notices. Contributions should preferably be as attachments to e-mail but hand written contributions may be sent by post, left at the Editor's address below or in the folder kept at the Village Stores. Contributions should run to not more than one A5 page (except by prior arrangement) and should be received by the Editor not later than the 12th of the month for publication at the end of that month. Contributions received after the deadline may be held over.

DISCLAIMER

The Editor reserves the right to omit or alter any ad or article and to change the content, format or issue date of the magazine without prior notice. The Editor cannot be held responsible for the factual correctness of, or for any libellous comment or statement made in any advert, article or other contribution published in this magazine. Every effort will be made to avoid any deliberate attempt to mislead or otherwise cause harm or damage to any person or persons by any advert, article or any other contribution published in this magazine.

THE TEAM

Editor:	Dick Bulley, 116 Shefford Road	815114
	e-mail: richard@bulleyr.fsnet.co.uk	
Advertising Manager:	Christine Elbourne, 5 St. Mary's Place	817409
Distribution Manager:	Colette House, 90 Fildyke Road	815585
Treasurer:	John Thompson, 16 Brookmead	812983

CONTENTS

Editorial		Page 2
Village News		3 - 10
Free Cycle		11
Collating	Dates	12
School Report		13 - 14
Features:	Rogers Bees	15
	Travel Guide	16
	R U Redundant?	17 - 18
	Computer Tips	19
Calendar of Forthcoming Events		20
Who's Who and Organisations		21 - 24
Village Announcements		25 - 32
District Announcements		33 - 34
St Mary's Church		35 - 38
Recipe		40
Garden Tips		41
Bus Times		42 - 43
Birthdays		44

EDITORIAL

A Very Happy New Year to you all! I hope your Christmas was excellent, if cold, and that the New Year will bring you health and prosperity.

To begin, as usual, with thanks for the last issue: thanks to the printers, Phyl & Beverley; to the collators who struggled man(and woman)fully to staple and fold the extra thickness of the December issue, and especially to the Distribution team who get the product round so quickly under the energetic leadership of Colette House.

And while I am thanking my Committee, another mention of our Treasurer, John Thompson, for his phenomenal success in raising funds towards the purchase of our new printer. I am delighted to thank the Beds and Luton Community Foundation for their grant towards this good cause under their Grassroots scheme.

It is hard to believe that this issue marks a year in office for the current committee! We have extended our financial year to bring it into line with Volumes of issues, which start afresh in April each year. So the next Messenger AGM will be on 2nd April 2009 in the room at The Sugar Loaf, starting at 7.30 PM. I am delighted to report that all the current committee are willing to stand for re-election, but please come along and show them support and tell us how we can make your magazine even better.

As I wrote in the last issue, we plan to mark the start of volume 25 in April by introducing a new cover, featuring a colour photo taken by a reader. We have some excellent entries already, but not so many that there is not plenty of opportunity for more to come. So send in your pictures and make our distinguished judges earn their distinction! We need a winning entry for every issue from April 2009 to our jubilee issue in April 2010.

Thinking of our jubilee issue reminds me that we have now commissioned the new display case to hold all our past issues. Dave Walker will make up his winning design, and we hope to have a ceremonial unveiling in April/May by County Councillor Robin Younger who made a significant contribution to its cost. The new cabinet will replace the current case in the village hall, which will be relocated to the bar. There will be a special display for the "brick" that was awarded to the Messenger in 1985.

Dick Bulley

LETTERS

Dear Editor,

I should be most grateful if you would convey our thanks to The Meppershall Players for providing us with a very enjoyable time at the pantomime Snow White. My family and I were fully entertained during the matinee performance: my 8 year old daughter rarely concentrates on anything for 2 +hours! The cast were great and it was obvious how much work had gone into making the whole thing such a success. Thank you to all involved.

Wishing all readers a happy and peaceful 2009,

With very best wishes

Sarah, Ray and Katie Johnson

Grandad agrees with them: see p.6

Letter from Pam Parker

Sugar Loaf ladies darts team

The new tenants of four months of the Sugar Loaf, Charlie and Glynis have reintroduced darts to the pub.

Glynis is the captain of the ladies' team, and one Friday night after one or two too many wines, I joined the team. I have met a great bunch of girls and we play on Monday nights in the Shefford and district league. We have played nine games so far, and two have been cancelled. On Monday 24th November we won our first match, against the Greyhound at Haynes ladies. We were delighted, shocked and amazed!

Has the tide turned? I hope so. A big "thank you" from all the girls to our small band of supporters who were as delighted as we were.

ROYAL BRITISH LEGION POPPY APPEAL

Once again, many thanks for supporting the 2008 Poppy Appeal. We raised £914.77.

Joyce Harris
Poppy Appeal Village Organiser

oOo

I should like to thank everybody for their kind support throughout this difficult time for me and my family. Thank you all so much for your lovely Christmas gifts.

*May I wish you all a Very Happy New Year.
Louise (Post lady)*

Thank you from Hoo Road residents to Viv and Lisa for collecting salt from the container in Fildyke Rd and de-icing much of Hoo Road during the recent icy and snowy period.

Name and address supplied.

This is bothering me!!

Who on earth is allowing their dog to poo on the High Street and Shefford Road? It's a disaster, creating a situation where even more folks will have a beef about us dog owners, even if we are not responsible.

I am a dog owner. I carry tiny, little, light nappy bags whenever I'm out with them. They are cheap as chips also!

There is NO excuse for leaving this mess on the busy pavements, where mothers and children walk to school amongst other people.

You most probably have trouble not treading in it the next day when you take your dog to do it again. Pick it up PLEASE.

If your dog is not wormed adequately, then the dog poo can cause a health problem for children.

Please train your poor dog to defecate in the correct place. Preferably in the back garden.

Name and address supplied

This is one of several letters received on this vexed subject. See the message from Mid Beds that follows. Ed.



DOG FOULING ON MEPPERSHALL HIGH STREET

Mid Beds District Council has received a number of complaints regarding dog fouling on Meppershall High Street; from the Village Hall to the Lower School.

The route is well used by all in the village, especially parents and children travelling to and from school. This has been an ongoing problem for the Mid Beds District and Meppershall Parish Council and residents over the last year. There have even been reports where children and parents have been unable to avoid the mess on the pavements.

It is your responsibility to clear up after your dog! Mid Beds provide dog waste bins around the village and we clearly state that dog waste must be picked up and disposed of properly. Please think of the other people who walk the route.

Mid Beds will be monitoring and patrolling this area more frequently and additional signs will be placed in this area. If you are found letting your dog foul without clearing up any mess, you will receive a fixed penalty of £50.

If any person witnesses and has details of dog walkers failing in their responsibility or wishes to report fouling that needs to be cleared, please contact Mid Bedfordshire District Council on (01462) 611222 or you can email customer.services@midbeds.gov.uk

GRANDAD SEES SNOW WHITE

Even in his dotage, Grandad was smart enough to take Holly (aged 6) and Emily (aged 2) to the Meppershall Village Hall on 7th December for the matinee performance of Snow White by the Meppershall Players. In the packed hall we were joined by an expectant crowd of other youngsters and their young-at-heart parents (and grandparents); and we were not disappointed. (Oh no we weren't!)

From the opening chorus of “anything goes” to the reprise that closed the show we enjoyed fun, colour and music, and especially the scary bits: the wolf had Emily hiding behind her mother in exactly the way that mummy herself had done when the Daleks came on the TV! I was not watching Emily when Alison Heath’s wicked Queen Maligna was frightening us all, because her performance was so spell-binding (ho, ho!), and not forgetting her alter ego, Pat Bass. Thank heavens that we had Chuckles (Karen Mitchell) to ensure that good, in the glamorous persons of Princess Millie (Helen Orechoff) and Prince Michael (Mel Cutts), triumphed in the end, with the benefit of some truly awful jokes. And talking of glamour, what can I say about Dame Goodheart (John Nye) – I do hope those legs are properly insured! To complete the line-up of star principals, Mick Trundle gave us a “towering” performance as Alonzo, the “high” Chamberlain.

Lower on the height scale the magnificent seven smaller people gave us the traditional performance with aplomb, ably supported by white mice, while everyone was supported by the Chorus. The musical score had us singing along, especially all those grown-up scouts and guides who were happy and they knew it - thanks to Cheryl Parr at the keyboard, while the costumes were dazzling. Thanks too to all the “behind the scenes” staff who provided the setting for so much enjoyment.

And all this was in the convenience of our own Village Hall, with its wonderful bar prices and the facility for very small members of the audience to be carried out as often as necessary! Thank you, Players, for a great afternoon; but now “it’s behind you!”, until next year.

SHEFFORD LEISURE GROUP

The month of November saw three coaches making their way to Thursford in Norfolk on three separate dates for their very popular Christmas Spectacular Show. Some of us travelled in sunshine whilst others experienced the first of the Winter snow. We finished each trip with a pre-booked evening meal at The Norfolk Hero. These venues have proved so popular that many people have put their names down again for this year, and we have applied for the tickets – fingers crossed we are allocated all those asked for.

Bury St.Edmunds Annual Christmas Fayre was another success with many stalls displaying Christmas wares. The public carol concert in the Cathedral was well worth a visit.

During December we enjoyed our Turkey & Tinsel holiday in Bournemouth with visits to many interesting places during our stay. Christmas Showtime at Wickstead Park also proved a success with many of us braving the cold for a ride on the Carousel! We finished the year at Westminster Central Hall for the ever popular John Rutter's Christmas celebration

We started 2009 with an annual visit to Milton Keynes for their pantomime 'Peter Pan'. Everyone regardless of age seemed to enjoy the 'ohs and ahs'!

We are still taking bookings for our 2009 holidays which includes a cruise to the Dutch Bulbfields in May and our 8-day holiday to Paignton and Torbay in June.

Our Annual 'Get-Together' at the Memorial Hall in Shefford, is Saturday 28th March at 7pm. Bookings now being taken.

Saturday 18th April – Newmarket and The National Stud – leaving Shefford at 8am.

Thursday 23rd April – Brick Lane Music Hall – starring ‘The Bachelors’, leaving Shefford at 11am. (This venue includes a lunch).

Wednesday 27th May – Pensthorpe Conservation Centre, Norfolk. We hope our visit will coincide with BBC’s ‘Springwatch’. Leaving Shefford at 9.30am.

Wednesday 29th July – Stoke Bruerne – This venue includes coffee and lunch at The Boat Inn, followed by a two and a half hour cruise through the Blisworth Tunnel. Leaving Shefford at 9am.

Venues are also being planned for London’s newest attraction and ‘Creeks, Cockles and Cockneys’, this will take us to Southend and Leigh-on-Sea. This event hopefully will take place later in the year. We are also planning our Turkey & Tinsel in the West Country from Monday 30th November to Friday 4th December.

Shefford Leisure Group is open to everyone in the local community who feels they would like to join us on our ventures. We are always happy to meet new friends. Raffles are held and the proceeds are for Keech Cottage Children’s Hospice. For further information regarding dates, prices and availability or to receive our monthly newsletter, please contact Enid on 01462 851397 or e-mail Enidpamment@aol.com.

Piano for Pleasure

Lessons for beginners of any age

Learn to play for your own enjoyment by means of carefully planned lessons and friendly encouragement

For further details contact Val Moules

Tel: 01462 815943

email: valerie@moules.freemove.co.uk

Meppershall Parish Council Report

The January meeting of the Parish Council took place on Wednesday 7th January at Meppershall Lower School.

Highways and Lighting

The proposed scheme to form a footpath from the village to Shefford is ready for submission to the funding committee and it is hoped that approval and a date for starting the works may soon be obtained. Notification was received of the need to close Campton Road for emergency repairs.

Environment and Leisure

A further quotation for replacement of the play equipment on Foster's Field had been received and will be considered. The tender documents for grass cutting around the village are nearing completion and quotations will be sought. It is expected that having defined the full scope of the maintenance works it will be easier to monitor the contractor performance in the future. It was resolved to proceed with erecting the gate on the access road to the allotments which has been proposed in order to improve security in this area.

Planning and Housing

Two new applications had been received. After consideration the Council expressed strong opposition to

one but had no adverse comments to pass to the Planning Authority on the second.

From the District and County Councillors

Councillor Carne gave a brief report from the District Council. Much of the work being done at present will be completed by the new Unitary Authority after it comes into being in April. Reports of the progress being made may be viewed on the authority website. Councillors and parishioners are being encouraged to establish links with the new organisation.

Other Matters

The Council received a copy of the crime statistics for the area from the Police Community Support Officer and were advised that the data is being made available via the Bedfordshire Police website.

The Council reviewed the financial statement for the current year in preparation for submitting details of proposed expenditure for next year to the District Council. It was resolved to continue with the work aimed at improving the village. This will result in a modest increase in Council spending and in order to limit the demands on the Council Tax payers a significant proportion of the increase will be funded by withdrawals from reserves held over from previous years.

John Parsons, Chairman, Meppershall Parish Council

The next Parish Council meetings will be held on
Wednesday 4th February and Wednesday 4th March at
7.45 pm at Meppershall Lower School.



NOVEMBER

Items available	Phone		Items Wanted	Phone
			Leaflet stand for parent support info in local school. Wall mounted or freestanding.	01462 815663

Please call the phone number given for the item you wish to collect or wish to donate in order to make necessary arrangements.

Please leave details of further items and your phone number in the Messenger folder at the Village Store, or at 116 Shefford Road or 17 Hoo Road, or e-mail to the Editor.

Messenger Collating Dates 2009

February	23	
March	30	
April	27	
May	No	Bank holiday
June	1	
June	29	
July	27	double issue
August	No	
September	28	
October	26	
November	30	double issue
December	No	

School Report

Meppershall VA Lower School 'An Outstanding Church of England School'

The Spring term brings more busy times at Meppershall VA Lower School.

Parents of pre-school children may start becoming aware of the months flying by before their 'little one' starts at 'big school' in September. These children have already started to make links by coming to the church to see the pupils perform their Christmas play - 'Peace at Christmas'. There will be other occasions this term and next when they come to visit us and vice versa. In previous years these have included a music morning in our hall, a teddy bears' picnic in our grounds, races at our sports day and 'play' in our 'outstanding' Foundation Stage classroom.

The oldest children too, are beginning to look forward to the next stage of their learning journey. Some will go to Henlow Middle and some to Robert Bloomfield Middle in Shefford. Links with both schools are good, with the teachers and subject leaders already coming in to work with the children or talk with the lower school teachers. In this way understanding is built, expertise shared and the children can move seamlessly on to the next stage.

Admission to each stage of the children's education is co-ordinated by the team at County Hall. As a Church of England Voluntary Aided school, we follow this procedure and parents apply direct to County Hall. However we are also our own

Admission Authority following government Code of Practice guidelines, laid out in our Local Authority and St Albans Diocese approved Admissions Policy.

Our catchment area too, goes beyond county catchment lines as it covers children who live within our Parish boundaries. A little known fact is that this boundary includes the houses in the Shefford estate around the Esso/Tesco petrol station on the bypass. The families that live there, are currently in the unusual position of being eligible for both Shefford Lower, their county catchment school, and Meppershall VA Lower, their Diocesan catchment school. Should places be available, these would be allocated in accordance with both schools' Admissions policies. Clarification of parish boundaries can be found on the website www.achurchnearyou.org.uk

If your child's birth date falls between 1/9/04 and 31/8/05 and you haven't yet applied for a place in our 'Outstanding' Foundation Stage class in September 2009, please contact the school office on 01462 813293. Mrs Reynolds, our secretary, will arrange a time for you to visit. We also have a few spaces in two other year groups. You can read our excellent report on the Ofsted website.

**MEPPERSHALL PLAYERS
DRAMA WORKSHOPS**

For Juniors and Adults

Led by Paul Carne

Wed 18th Feb

Wed 25th Feb

Wed 18th March

All in Village hall at 7.45 PM

Enquiries: contact Colette House, Tel: 815585

Meppershall Bakery Bees *by Roger*

Hi. It's the beginning of another year and time to reflect on our successes of last year and things that were not so successful. Of course the wet weather in the summer was a main cause of the small honey crop. I ran out just before Christmas, as predicted.

February heralds longer days and great expectations for spring. The weather can be variable but usually there are a few warm, calm, sunny days when the bees and I can enjoy getting outside doing some clearing up.

The winter bees are coming to the end of their lives. The old winter bees will try to leave the hive to find fresh nectar and pollen. They will be desperate to defecate away from the hive and will also be aware of the need to maintain the availability of food within the hive in order for new brood to be raised. The winter bees will literally work themselves to death for the colony and the total numbers of workers in the hive will drop rapidly. As long as the new workers are able to take over the duties of the winter bees, the colony will thrive and build up quickly to take advantage of the spring flora.

The queens are laying eggs – a good start for the season to come.

February is the month when my winter preparation gets its greatest test. Unless adequate stores of food are present in each colony, then some form of feeding will be necessary for a colony survival at this stage. I have already placed 2kg of fondant on each hive and will have to keep feeding them until the new workers can sustain the colony when the weather warms up. This month is a good time to watch the entrance of the hive: as the weather warms the bees will start flying and this is a good opportunity to assess the state of the colony without opening the hive. If all is right in the hive, the queen will have started to lay eggs and there will be brood that requires feeding. The workers are keen to feed brood with fresh pollen and will look for early flowers with pollen easily available.

As they fly back to the hive they will be carrying pollen loads that you can see. If we see plenty of bees entering the hive with pollen we can be sure that there is new brood and the colony is started to develop for the coming year. Crocuses are a valuable early nectar source as is willow.

January first inspection – detected woodpecker holes to roof – replaced with tin roof – now break your beak on that!

Small jars of Honey available at Rogers Bakery-see you there.

Travel Guide: Canary Islands

The Canary Islands are a collection of 4 small islands just off the African coast, approximately 60 miles from the Sahara Desert. They offer fabulous weather all year round and enjoy warm, clean, unpolluted seas for bathing. Inexpensive budget flights take approx 4 hours, making an ideal destination to enjoy in the sun! A stay in a Canary island hotel or holiday villa will grant you a virtual 'guarantee' of daily sunshine, plus you'll never be far from a beach.

Fuerteventura-a large and sometimes windy island, has excellent beaches and a Championship Golf course. There are more than 150 enormous sand dunes and long sandy beaches, but if you wish to stay close to the sea, you'll find a good selection of hotels, villas and self-catering apartments in Corralejo, north of the island. More centrally situated is Calherta de Fuste, a great beach resort for all ages. An exciting drive into the mountains is an experience not to be missed.

Lanzarote-is the 2nd largest of the Canaries with plenty of beaches like Playa Blanca and Playa Flamingo. As no high rise building is permitted, Lanzarote has relied upon top quality private villa developments to accommodate visitors.

The pretty resort of Puerto del Carmen boasts a wide sweeping sandy beach with great facilities, there's also the fishing port and harbour nearby offering delightful restaurants and plenty of night-life if needed. A good choice of beaches near villa developments built along the Costa Teguise, are only a short distance from the capital, Arrecife.

Tenerife-has an exceptional all-year-round climate, although the North can be rather humid and often cloudy with little sun. The South however, beyond the central mountain range, is extremely hot and dry, with almost unbroken daily sunshine. The liveliest resorts are Los Christianos and Playa de las Americas, both hugely developed now with plenty of luxury villas and apartments to choose from.

Gran Canaria-enjoys a mix of mountainous landscapes and tropical plantations. You may choose to holiday in Playa del Ingles, a lively resort boasting a gorgeous beach that's popular with families and has excellent facilities. Enjoy too, the Sahara sand-dunes near Maspolomas, or take a drive westwards to Puerto Rico and Playa de Mogan. The recent development of Tauro offers exclusive beach and golf villas in quieter surroundings.

For more information about the Canary Islands please visit: www.holidayrentalcentre.com or contact the writer: Stuart Johnston

Facing Redundancy?

If you are facing redundancy at this time, here are 5 points for you to remember:

- 1 Take stock of your skills and your experience: These are yours to keep whatever happens to a job title, employer or regular salary. Use the skills and experience you have gained throughout your life to produce a unique C.V. that can apply only to you.
- 2 Remember that being made redundant is nothing personal. What is happening to many people is a reflection of the global economic climate and absolutely nothing to do with you as an individual.
- 3 When you are exploring new ways of producing an income, work out the minimum amount that you need to survive on, so that you are open to applying for the greatest number of jobs that appeal to you. To begin with, you may take a job that has a much lower salary than you are used to but if the prospects are good, it is a job you will enjoy or has other significant benefits, it may be worth it.
- 4 If possible, get expert financial advice. There may be benefits or financial assistance available that you are not aware of and these can make all the difference during a difficult time.

- 5 Think of redundancy as an opportunity to do something different. If you look at things a different way, could it be an exciting time? Can you use this time to spend more time with loved ones, walk in the countryside, practice a skill, talk to interesting people, research something interesting, read more etc? Maybe, you will even decide to go and live somewhere you have always dreamed of now that the job is not to stop you?

Finally, remember that nothing lasts forever and in the words of the song 'things can only get better'!

Meppershall Strollers

The next Meppershall Strollers walk will be on Sunday 15th February at 2.00pm. We will meet outside the Village Hall and we will decide on the route nearer the date when we have some idea of what the weather will be like. However, we will finish the walk before it gets dark.

Please be aware that Meppershall Strollers does not represent any specific organisation and is simply made up of individuals who enjoy walking in the company of others. All walkers participate entirely at their own risk.

Jill Foskett - 01462 851770

Part 1 of 2.

Windows - Files & Folders

Windows runs like a filing cabinet for your data, "Windows Explorer" is the cabinet, "Folders" (the yellow ones) are equivalent to the suspension files which in turn hold the "Data Files" (your Word documents, photos etc.).

Right Click on "Start" and *Left Click* on "Explore" – the Windows filing cabinet will now present itself a bit like a family tree. *Left Click* on "My Documents" (near the top) and this is where windows keeps all its default folders like My Pictures and all your folders and files. The right hand panel shows everything that is in My Documents. To access folders from here, *Double Left Click* on any one and its contents will appear. This is the same for any folder in this pane (the folders shown in the left hand pane need only one left click to open in the right hand pane). To get back to where you were, just go to the *Back* and *Forward Arrows* top left of the screen. Why not try this a few times to get used to it. If you get in a panic just *Left Click* on the X in the top right hand corner and start again, all will be well!

Double Left Click on any file and Windows will load it into the relevant software and bring it up on the screen for you. When you close any files you have been working on or viewing, the *Save* function puts it back from where it came and overwrites what was there. If you want to retain the original information, use *Save As* and rename the altered file (changing or adding only one character will suffice) and this will save your changes as a new File in the same Folder as the original.

John Chapman - www.cekay.co.uk

Tip of the Month: Download the "Windows Desktop Search" tool from Microsoft (it's free folks). This is a brilliant and very fast method of searching your files or the Internet from a little box in your system tray (the strip at the bottom of your screen). Just type in any word or phrase in the box and all relevant files will be presented to you. It learns your computing habits and improves its accuracy and speed as time goes on. Search the Internet using the italicised words above, download and click "Run". (XP users only as this is included in Vista).

Calendar of Forthcoming Events

January 2009

<u>Saturday 31st January</u>		
<i>Friends of St Mary's Quiz Night</i>	<i>7.30 for 8.00PM</i>	<i>Village Hall</i>

February 2009

<u>Wednesday 4th February</u>		
<i>Parish Council meeting</i>	<i>7.45 PM</i>	<i>Meppershall School</i>
<u>Saturday 14th February</u>		
<i>The Rock Factor</i>	<i>8.00PM</i>	<i>Village hall</i>
<u>Sunday 15th February</u>		
<i>Strollers Walk</i>	<i>2.00PM</i>	<i>Outside Village Hall</i>
<u>Sunday 15th February</u>		
<i>Charity Quiz Night</i>	<i>7.30 PM</i>	<i>Sugar Loaf</i>
<u>Wednesday 18th February</u>		
<i>Players Drama Worksop</i>	<i>7.45 PM</i>	<i>Village hall</i>
<u>Wednesday 25th February</u>		
<i>Players Drama Worksop</i>	<i>7.45 PM</i>	<i>Village hall</i>
<u>Friday 27th February</u>		
<i>Free Music Night</i>	<i>8.00 PM</i>	<i>Sugar Loaf</i>

March 2009

<u>Wednesday 4th march</u>		
<i>Parish Council meeting</i>	<i>7.45 PM</i>	<i>Meppershall School</i>
<u>Wednesday 18th march</u>		
<i>Players Drama Worksop</i>	<i>7.45 PM</i>	<i>Village hall</i>
<u>Saturday March 21st</u>		
<i>The Vauxhall Male Voice Choir</i>	<i>7.30 PM</i>	<i>St Mary's Church</i>

WHO'S WHO AND WHAT'S WHAT IN MEPPERSHALL CHURCHES

St. Mary's Parish Church

Rector:	Rev. John Harper	
	The Rectory, Church Road	813334
Curate:	Rev. Patsy Critchley	
	39 Rooktree Way, Haynes	01234 381510
	(normally available Wed, Fri & Sun)	
Church Wardens:	Mr. Brian Bellamy, 125 High Street	815944
	Mrs. Brenda Wright, 75 High Street	816446
Lay Reader:	Pam Halliwell, 15 Buxton Close.	817069
Junior Church leaders	Alex Sinfield 97, High Street	851473
	Gillian Marshall-Davies, 9 Brookmead	850947

Parochial Church Council

Secretary:	Mrs. Janice Middleton, 11 Shefford Road	813925
Treasurer:	Mr. D. Bartlett, 14 Taylors Close	811191

Methodist Chapel

Minister:	Rev. P. Snelson, 79 Amphil Road, Shefford	813284
-----------	---	--------

Roman Catholic Church

Priest:	Father Bennie Noonan	813436
---------	----------------------	--------

SCHOOLS

Meppershall Lower School	Head Teacher	Mrs. Moira Coomes	813293
Henlow Middle School	Head	Mr. Payne	813733
Samuel Whitbread Community College	Head	Mr. Rob Robson	629900

DOCTORS

Cakebread & Partners,	The Health Centre, Iveldale Drive, Shefford	814899
Puritz & Collins,	The Surgery, 109 Station Road, Lower Stondon	850305

LOCAL REPRESENTATIVES

Chairman, Parish Council	Mr. John Parsons, 17, Shillington Road	813333
Council meets 1 st Wednesday each month, in Meppershall Lower School at 7.45pm		
Clerk:	Mr. C. Waghorn, 15 Church Lane, Letchworth	637531
	Email: waggers.uk@ntlworld.com	
County Councillor:	Cllr. Robin Younger	
	Jesmond House, High Street, Flitton	01525 717090
	Email: robin.younger@bedscc.gov.uk	
Surgery/Advice Centre: 1 st Friday each month (except August), Shefford Library 10am – 11.30am		
District Councillors:	Mr. Paul Carne, 6 Hoo Road, Meppershall	857803
	Email: paul.carne@midbeds.gov.uk Fax:	857804
	Mr. Tony Rogers, 3 Poppyhill, Henlow	816305
	Email: tony/rogers@midbeds.gov.uk Fax:	816510
Member of Parliament:	Mrs. Nadine Dorries, House of Commons	
	London SW1A 0AA	0207 2194239
Member of Euro Parliament:	Christopher Beazley (Con)	
	C/o Herts & Stotfold Conservative Ass, 4a Swains Mill	
	Crane Mead, Ware, Herts. SG12 9PY	01920 463064

SHOPS

Roger's Bakery & General Store (next to School)		
	Mon-Fri 8.15am – 5.30pm / Sat 8am – 1.30pm	813398
Post Office & Village Store, 6 High Street		
		811252
Post Office:	Mon-Fri 9am – 1pm & 2pm – 5.30pm (closes 12..30 Sat)	
Shop:	Mon-Thurs 6am – 6pm, Friday 6am – 7pm	
	Saturday 6.00am – 6pm, Sunday 6.30am – 1pm	

PUB

The Sugar Loaf	25 High Street (Charlie & Glynis Bailey)	813513
----------------	--	--------

ORGANISATIONS**Meppershall Village Hall Committee**

Chairman:	Steve Ansell 6, High Street	811252
Treasurer:	Mr. D. Birch	817014
Secretary	Linda Gold 18, High Street	815629
Booking Secretary:	Karen Lucas, 51A High Street	811581
Village Hall Telephone Number		817359

Babysitting Circle

Vacant

Brownies

	Mondays 6pm – 7.30pm	Village Hall	
Brown Owl:	Mrs. Christine Elbourne		811964
Snowy Owl:	Mrs. Suzanne Brightwell		815752

Beavers

	Tuesdays 6.30pm – 7.30pm	Shefford Scouts HQ	
Leader:	Mrs. Hayley Henshall		817446
Leader (Shillington):	Jan Montgomery		712386

Bingo

Fridays 7pm Village Hall

Mid Beds Conservative Association

Chairman:	Mrs. Pippa McLuskie, 4 Stondon Road	813417
Secretary:	Mrs. G. Bird	811260

Cubs

Shefford	Wednesdays 6.45pm	David Cousins	811441
Shillington		Pauline Goodman	711943

Evergreen(over 60s) Alternate Thursdays 2.30pm Village Hall
Miss E. Ashton (Poppy), 20 Fildyke Road 07931 636544**Friends of St. Mary's Church**

Chairman:	Mr. Trevor Thorley, 9 Hoo Road	813357
Secretary:	Margaret Evesham, 107A, High Street	814291
Treasurer:	Mr. H. Davies, 15 Hoo Road	812127

Shefford Leisure Group

Mrs. Enid Pamment, 112 High Street 851397

Meppershall Players (Amateur Dramatic Society)

Chairman:	John Stinson	816919
Contact	Colette House	815585
Treasurer & Contact:	Graham Scrase	813966

Meppershall Lower School Association

Chairperson:	Sarah Saunders	850817
Secretary:	Lorraine Jarvis	811216
Treasurer:	Ann Cawley	819434

Meppershall Social Club

	(see Notice Board for opening times)	
Chairman:	Mr. G.R.Walker, 37 Brookmead	815183

Meppershall Baby & Toddler

	Tuesdays 1.30pm – 3.pm	Village Hall	
Chairperson:	Jessica Bryant		819143
Secretary:	Liz Gormley-Fleming		814110
Treasurer:	Nicola Metcalfe		816785

Meppershall Pre-School

		Village Hall	
	Monday - Friday	9.30am – 12 noon.	
	Mon, Wed, Fri:	12.45 – 3.15	
	Lunch Clubs: Mon, Wed, Fri:	12.00 – 12.45	
Chairperson:	Catherine Turner		812134
Secretary:	Rachael Bamford		819403
Registrar:	Louise Hutson		814148

Scouts

Shefford	Diane Landau	01234	381153
Shillington	Paul Major		834251

Tennis (at Langford)

	Neil Franklin	815735
--	---------------	--------

Womens Institute

	2 nd Wednesday in month 7.30pm	Village Hall	
President:	Gillian Thomas		815979

COMING EVENTS AT THE SUGAR LOAF

Sunday 15th Feb Charity Quiz Night 7.00 for 7.30 PM
Teams of any number - £1.00 per head
All proceeds to St John's Hospice, Moggerhanger

Fri 27th Feb Free Music Night 8.00 PM 'til late
Featuring Paul Adams

AMENITIES

Banks	Barclays, 6 North Bridge Street, Shefford Monday – Friday 9.30am – 4.30pm	0845 7555 555
B&B	Old Joe's	815585
Dentist	Mr. Lakhani, High Street, Shefford	814020
Fishmonger	Les Braithwaite (Mobile Van) – Thursdays approx 11.45am	
Flower Workshops	Joanne Sheppard, 74 High Street. Booking essential. Children: Saturday 10.30-12.00; adults Tue & Wed 7.30-9.00	816849
Greengrocer	Nigel Mann (Mobile Van) – Fridays 12.30pm – 2.30pm	711802
Hedgehog Rescue	Hedgehog Trust St. Tiggywinkles	01584 890801 01844 292292
Henlow Bowls Club	Dennis Neilson	01462 851208
Kennels/Cattery	Wayside, Chapel Road	813261
Library	High Street, Shefford	639070
Livery Yard & Training Centre	Caroline Carter, Fildyke Road	07747 686118
Mobile Library (alternate Wed)	High Street/School 1.55pm – 2.10pm Village Hall 2.15pm – 2.30pm Fildyke Road 2.35pm – 2.50pm	
Newspapers	Meppershall Village Stores & PO	811252
Police	Emergencies/Police attendance required Shefford Police Post (non emergencies)	01234 841212 Or 01582 471212 01234 841212
School of Dance	Positive Moves Saturday Mornings Emma Scott, 29, Fildyke Road	Village Hall 07914 063892
Whitbread Wanderbus		01767 318444

USEFUL NUMBERS

Bedfordshire Police	01234 841212	Brit Transport Police	0800 405040
Lister Hospital	01438 314333	Bedford Hospital	01234 355122
Beds County Council	01234 363222	QE2 Hospital	01707 328111
National Rail Enqs	0845 484950	Mid Beds Dist.Council	01462611222
Gas Emergency	0800 111999	NHS Direct	0845 4647
Fire Safety Advice	0800 0435042	Electrical Emergency	0800 838838

Meppershall Village hall

Presents

The Rock Factor

Valentine's Night

Saturday 14th February 2009

8pm til late

*Tickets only £5 per person available at
Village Stores in advance, or call Karen on
811581.*

*Limited number, so buy early to avoid
disappointment.
Over 15's only*

*Come and enjoy an evening of
live music and entertainment on Valentine's
Night*



**THE FRIENDS OF ST. MARY'S
PRESENT**

**QUIZ
NIGHT**

**Meppershall Village Hall
SATURDAY, 31st JANUARY 2009**

**Start 7.30pm = Bar 7pm= Prizes
TABLES of 6 or TICKETS £5 from:**

**Trevor Thorley 813357
Margaret Evesham 814291
& other Trustees**

**Enjoy this unique experience of friendly rivalry,
do come along and join in the fun!**

Do you have a party to organise and no venue?
 Do you have a wedding to organise and no venue?
 Do you have any event to organise and no venue?

Have you thought about hiring

Meppershall Village Hall

The Hall is available and can cater for all events, large or small.

There are tables, chairs, lighting, kitchen, licensed bar and all facilities needed for your event to run smoothly.

Our very reasonable rates vary with the time of day and day of the week eg:

Children's party (afternoon) -	£36
Saturday Evening -	£140
Wedding (all day) -	£220

If this sounds like what you need, please contact our
 Bookings Secretary
 Karen Lucas on 01462 811581

You can also visit our website for full information on
www.meppershallvillagehall.co.uk

Remember, it's your village. It's your Village Hall!

The Friends of St. Mary's, Meppershall,
bring to you

**“THE VAUXHALL
MALE VOICE
CHOIR”**

Saturday, March 21, 2009

St.Mary’s Church 7.30pm

*Tickets £12.00 to include Buffet
refreshments; with red or white wine
FROM:*

Trevor Thorley 01462 813357

Margaret Evesham 01462 814291

Roger’s Bakery & The Post Office

FRIENDS NEWS

When you read this issue of the Meppershall Messenger, it might not be too late to get a team together and book a table for The Friends of St. Mary's very popular annual **QUIZ NIGHT**, which will take place on Saturday, 31 January, in the Village Hall at 7pm for 7.30pm. Tables are in numbers of 6, or if you can't find a table, there may be vacant places where you can join a table to make up a team. Entry is £5; there is a Bar from 7pm and also a raffle during the evening. Every evening so far has been extremely successful with lots and lots of laughter and fun. If you want to join in, give me a ring on 01462 813357. It's your shout!

The Friends of St. Mary's go to great lengths of thought and effort to bring you quality entertainment of the highest standard. The next big event is on **21 MARCH** when, due to popular demand, we have engaged **THE VAUXHALL MALE VOICE CHOIR** to sing for you again in St. Mary's Church. This will be an entirely new programme and you may well remember that last year **ALL** tickets had been sold 2 weeks 'before' the event. Tickets are £12, which also includes the now customary and popular buffet supper, with a glass (or two) of quality red or white wine to accompany it. If you don't drink, then we have squash available, our aim is always to please. Tickets for this event will go on sale later this month so please don't miss it.

All proceeds go towards the church restoration fund. For tickets and further information call Trevor Thorley on 01462 813357
trevor.thorley1@btinternet.com.

MEPPERSHALL BABY & TODDLER GROUP



COME ALONG AND JOIN US.

MEPPERSHALL VILLAGE HALL

TUESDAY AFTERNOONS 1.45–3.15PM



WE HAVE A WIDE RANGE OF TOYS AND ACTIVITIES
TO AMUSE AND ENTERTAIN YOUR UNDER 5'S

BABY AREA CRAFT TABLE



£1.50 PER SESSION
(INC. CHILDREN'S REFRESHMENTS)

NEW FAMILIES ALWAYS WELCOME



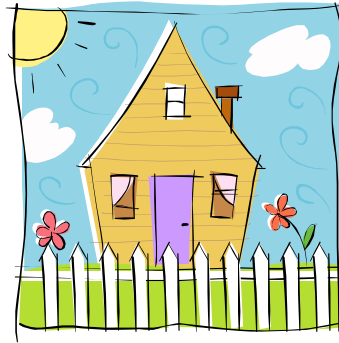
FURTHER INFO. TEL: (01462) 819143 JESSICA

(01462) 814110 LIZ

(01462) 816785 NICOLA



SPRING HOUSE
BEAUTY & HOLISTICS



2 Fildyke Close, Meppershall.

01462 851629

SATURDAY 7th FEBRUARY 2009

To celebrate our 2nd year in business

OPEN DAY 10am – 3pm

FREE

Mini Beauty / Holistic Treatments

- ❖ File & Varnish on fingers or toes
- ❖ Indian Head Massage
- ❖ Hand Massage or Foot Massage
- ❖ Back Massage or Hot Stones

All of the above treatments are mini versions
for 10 -15 minutes only.

Plus a chance to win free treatments in the Raffle!

Please call 851629 to book your free treatment.

20% off future bookings paid for on the day.



*A New Gardening
Group*

**MEPPERSHALL
GARDEN
CLUB**

Are you interested in gardens and gardening and would like to meet others in the village who share your enthusiasm, then why not join this newly formed group.

The aim of the club is to bring together a small group of garden and gardening enthusiasts on a regular monthly basis. As well as swapping plants, seeds and information with each other, we plan to visit local gardens and possibly trips to other gardens of interest outside of the village. We are also keen to see Meppershall blossom through our labours by sharing our time and efforts with the community.

Our first meeting, to be held on Wednesday 25th February at 11am, is to introduce ourselves and to put forward ideas and suggestions on how we want our Garden Club to grow.

If you are interested in coming to our first meeting or joining us then why not pick up the phone now and call either:

Linda Parker 01462 812144

Sarah Till 01462 817176

Kim Lee Tyler 01462 811750

Vision of Seven Day Air Ambulance Service for Bedfordshire Realised

The Charity "The East Anglian Air Ambulance" (EAAA), operator of air ambulance Anglia Two, has just completed its first full year's operation over Bedfordshire and what a year it's turned out to be for the charity's hard working crew, staff and volunteers.

The undoubted highlight is that, despite the challenging economic climate, the charity was able to announce in mid-December that funding levels now mean that the aircraft, which also serves Cambridgeshire, is able to fly seven days a week. Anglia Two is one of the most advanced air ambulances in the UK but, since it first took to the skies in August 2007, it has only been operational five days a week because of the cost.

Research shows that victims of medical emergencies or accidents stand a better chance of surviving or making a full recovery if they receive definitive medical attention within the first hour, or 'Golden Hour'. The availability of an air ambulance enables medical teams to reach patients, even those in remote or inaccessible areas, quickly and because Magpas' clinicians are so highly trained, they can begin treatment at the accident site. Anglia Two carries an array of the latest medical equipment and the range of procedures which can be carried out by its crew on site is increasing all the time.

Paul Airtion is Fundraising Coordinator for the EAAA in Bedfordshire and says the people of the county have started to take the air ambulance to their heart, especially as they are increasingly witnessing its work at first hand in all corners of the county.

"In a short time, we've built up a team of loyal and deeply committed volunteers and supporters who are generous with their time and money," he says. "They're a pleasure to work with and are invaluable to me as I strive to ensure that the county is delivering the funds to cover the cost of the service." "Anglia Two is now providing a 365 day life saving service across Bedfordshire but we're a charity and receive no government or National Lottery funding. We're completely dependent on fundraising and donations to raise the £3 million we need to keep Anglia Two and its sister aircraft Anglia One flying and to provide the advanced medical equipment they carry."

Executive Director, Simon Gray said, "The people of Bedfordshire and the other counties we serve have brought our vision of a dedicated air ambulance for the county to reality and they should feel very proud of what they have achieved. We know times are more difficult and that everyone is feeling the pinch but we hope that despite tougher times, our supporters will dig deep and continue to support us. We have lots of ideas as how they can do this inexpensively – and people can also give their time, which is a great help to us. 2009 looks as if it will be a challenging year for all of us but with a little bit of help from many people, I'm hopeful we will weather the storm and continue to deliver the air ambulance service which everyone in Bedfordshire deserves."

For more information and fundraising ideas, please contact the East Anglian Air Ambulance on 0845 066 9999 or check out <http://www.eastanglianairambulance.org.uk/index.html>
Magpas is a separate emergency medical charity; more details on <http://www.magpas.org.uk/>



Anglia Two

***ST MARY THE VIRGIN
MEPPERSHALL PARISH CHURCH
(CHURCH OF ENGLAND)
Church Rd, off Campton Rd***

Rector: (Meppershall & Shefford) Rev John Harper, Rectory, Church Rd,
Meppershall. revjohnharper@talktalk.net 01462 813334
(usual day off: Monday)

Curate: Rev Patsy Critchley; 01234 381510

(Patsy's usual ministry days are Weds, Fri & Sun)

Lay Reader: Pam Halliwell 01462 817069 (usual day off: Friday)

Churchwardens: Brian Bellamy 01462 815944 (Pastoral Assistant); Brenda
Wright 01462 816446

February

Sun 1st 11.15 a.m. Parish Communion & 'JC'
(Junior Church/Jesus Club) - in Rectory.

Sun 8 8.30 a.m. Holy Communion
11.15 a.m. Family service

Sun 15 8.30 a.m. Holy Communion
6pm Evensong

Sun 22 8.30 a.m. Holy Communion
11.15 a.m. Parish Communion & 'JC'

Wed 25 **Ash Wednesday – First day of Lent**
10.00 a.m. Holy Communion
Also at 7.30 pm at St Michael's, Shefford

Sun 11.15 a.m. Parish Communion & 'JC'
Mar 1 (Junior Church/Jesus Club) - in Rectory.

Weekday Services:

Wednesdays : 10a.m. Holy Communion (B.C.P.)

Fridays : 7.30p.m. Compline (Evening Prayer)

Saturdays 9.30a.m. Morning Prayer

‘Alpha’ in Meppershall

‘Alpha’ is a programme of Christian fellowship and discussion that is now established world wide, and has just begun here in Meppershall. It’s a user-friendly approach to appreciating the core features of Christian belief, and is designed both for those who would like to renew their grasp of faith as well as for those who regard themselves as enquirers. We have just started evening meetings at Meppershall School on most weeks, and if others would like to join us it’s not too late come along. Each session comprises a simple cooked supper, a talk or film on a different topic each session, and an informal group chat where all views and questions are welcome. Please let me know if you would like to attend – there is no fee (opportunity to donate for expenses). Just ring if you’d like to know more – or simply turn up.

John Harper. – 01462 813334

Alpha 3	Tues 3 rd Feb	How can I be sure of my faith?
Alpha 4	Weds 11 th Feb	Why & how should I read the Bible?
	WEEK OFF	
Alpha 5	Weds 25 th Feb	Why and how do I pray?
Alpha 6	Tues 3 rd Mar	How does God guide us?
Alpha 7	Weds 11 th Mar	How can I resist evil?
DAY AWAY	Sat 21 st Mar	The Holy Spirit
Alpha 8	Weds 25 th Mar	Why and how should we tell others?
Alpha 9	Weds 1 st April	Does God heal today and What about the Church?

Lent lunches are being held as last year at Shefford's Community Hall (by the fish shop on Ampthill Rd) 12.30 - 1.30. Organised by the four town churches, the lunches start on Sat Feb 28 and continue on Mar 7, 14, 21, 28 & April 4. Brief reflection & prayer at

1p.m.ish. Simple meal - donation in support of the work of Christian Aid. No booking - just come along

On Weds Feb 18 7.30p.m. the Shefford Deanery Synod meets at St Michael's, when the first part of the meeting will be open to any interested in a talk by Christina Rees, author and broadcaster and member of General Synod, followed by discussion, on the topical issue of **Women Bishops** in the Church of England.

Do you have any practical skills you could contribute to your Parish Church and/or Churchyard ?

The task of maintaining and improving our beautiful Church and churchyard is a continuing challenge that is normally shared by a relatively small group of willing volunteers. If you would consider helping the team in any way, even if for just an hour now and then, your contribution would be much appreciated. For example:

- a helping hand with keeping the church interior clean
- a share in mowing or tidying the churchyard
- 'one off' DIY tasks (currently the main notice board could do with a thorough makeover!)
- joining a Spring time ' working party'

Please let us know if you 'd like to know more
Brian – 815944; John 813334

John Harper

ST. FRANCIS OF ASSISI CATHOLIC CHURCH HIGH STREET, SHEFFORD		
<u>Sunday Masses</u>		
First Mass of Sunday	6pm	RAF Henlow
Saturday Evening	9am	Shefford
	5.15pm	Shefford
Weekday Services	See notice at Church or telephone	
Parish Priest:	Parish Secretary:	
Fr. Bennie Noonan 813436	Rose Boulton 811547	

Letter from St Mary's.

I'm writing this between Christmas and New Year but by the time you read it the decorations will be put away and even the Epiphany season will be almost over. Epiphany means the showing of Christ to the Gentiles but to-day I suppose it means spreading the Good News of the coming of the Saviour to all who don't know it. At St Mary's our Alpha course is under way and some who are coming don't know or understand it but hopefully will find out more as the weeks go by.

My thoughts are beginning to look ahead to Lent when we remember the 40 days Christ spent in the wilderness preparing for His ministry. We are told to use it to prepare for Easter and I am sure you are all looking forward to the next official holiday and the warmer weather! So how should we plan for Lent? I suspect it will be a lot easier this year. All of us are having to tighten our belts as the financial crisis deepens. Many of us know or have heard of those who have lost their homes or their jobs. We can't ignore it so giving up something will fit in well. Perhaps you will be cooking at home instead of going out for a meal or postponing buying those new clothes till the next sales. I'm sure we all have to think more carefully about what we are doing and perhaps even whether we really need to spend that money.

Another way of preparing for Lent is to plan to do something extra. We could plan to find out something; - new-books come free at the Library and perhaps we could learn a new skill which will save money. Even better perhaps we could look around and see if we can help those worse off than ourselves, by asking them to a meal or looking after the children while they fill in job applications or look for accommodation. Whatever we do let's see if we can carry the good will and love we experienced at Christmas into the days ahead. All of us at St Mary's wish you a peaceful and blessed New Year and if we can help in any way let us know

Pam Halliwell Lay Reader



**SPORTS AND REMEDIAL
MASSAGE THERAPY**
Jon Aikman CertSMT MHFST

Treatment in the comfort
of your own home including:



Running Related Injuries
General Sports Injuries
Runners' Biomechanics
Muscle Conditioning
Deep Tissue Massage
Injury Rehabilitation
Postural Correction
Neck and Back Pain
Everyday Aches and Pains



Please phone (01462) 812572 or 07900 224418
to arrange an appointment

Fully Insured

SPLICED COFFEE CAKE,

A surprise for your loved one on Valentines Day.

This cake is soaked in brandy flavoured coffee while still warm, then allowed to cool in the tin. Topped with whipped cream to make a delicious desert. Any spirit or liqueur may be used instead of brandy.

Ingredients

125g (4oz) butter.
300ml (1/2 pint) strong fresh coffee.
125g (4oz) light brown soft sugar.
1 teaspoon gelatine.
2 eggs, beaten.
4 tablespoons brandy.
125g (4oz) self raising flour, sifted.
200ml (1/3 pint) double cream, whipped.
50g (2oz) walnuts, chopped.
walnut halves to decorate.

Method

1. Grease and base-line an 18cm (7 inch) loose bottomed round cake tin.
2. Cream the butter and sugar together until pale and fluffy. Beat in the eggs a little at a time, then fold in the flour and walnuts.
3. Transfer the mixture to the prepared tin and bake in a preheated oven, 180c 350f Gas mark 4, for 25 - 30 minutes, until risen and firm to touch.
4. Place about 3 tablespoons of the coffee in a small pan. Sprinkle over the gelatine, leave to soak for a few minutes, then heat gently until dissolved. Add the remaining coffee and brandy and stir well.
5. Pour the coffee mixture over the cake while it is still hot. Leave in tin until cold.
6. Transfer to a serving plate and cover with the whipped cream, swirling it attractively. Decorate with walnut halves to serve.

Serves 10

Preparation time: 35 minutes.

Cooking time: 25 to 30 minutes.

Freezing: Recommended at end of stage 5.

GARDEN TIPS FOR FEBRUARY

With acknowledgements to the RHS

- Make sure garden birds have food and water.
- Apply organic-based fertilisers.
- Continue planting trees, shrubs and fruit trees and bushes as the weather allows.
- Firm newly planted trees and shrubs if lifted by frost.
- Prune winter-flowering shrubs that have finished flowering, including winter heathers.
- Prune summer-flowering shrubs that flower on new wood.
- Prune hardy evergreen trees and shrubs.
- Prune jasmines and late-summer-flowering clematis.
- Prune off old stems of herbaceous perennials.
- Start dahlia tubers into growth.
- Divide and plant snowdrops.
- Repot or top-dress shrubs in containers.
- Bring in the last of spring bulbs being forced.
- Prepare seed beds for vegetables.
- Lime vegetable plots if necessary.
- Mulch fruit trees after feeding.
- Protect gooseberry bushes from bird damage.
- Prick out or pot up seedlings sown last month.
- Start tender perennials under cover into growth.

LAST CHANCE

- Cut-back overgrown shrubs and hedges before the nesting season starts.
- Finish pruning fruit.

GET AHEAD

- Check tools and equipment and plant supports are sound before you need them.
- Make sure all pots and seed trays are clean.
- Check on stocks of pots, compost and labels.

Bus Timetables – (Weekdays only given here)

In developing the Meppershall Village Plan it was clear that there was a lack of knowledge about the buses serving Meppershall.

The following information has been taken from the web and has been abbreviated to show the main stops, including Meppershall.

Full information can be obtained from the bus companies or their websites.

Route 79 to Sheffield – Meppershall – Barton – Luton

Sheffield, High Street,				1533	1740	1840
Meppershall, Sugar Loaf				1538	1745	1845
Meppershall, Rectory Road	0728	0928	1118	1540	1747	1847
Meppershall, opp Sugar Loaf	0730	0930	1120			
Sheffield, High Street,	0735	0935	1125	1335		
Barton, Windsor Parade	0801	1003	1153	1403	1759	1859
Luton, Silver St				1554	1825	1925
Luton, Galaxy Centre	0838	1031	1221	1431	1622	

Route 79 to Luton – Barton – Meppershall – Sheffield

Luton, Galaxy Centre,					1630	1750
Barton, Windsor Parade					1656	1812
Sheffield, High Street,	0712	0912	1102	1252	1740 ^p	1840
Meppershall Loaf, Sugar				1320	1530	1745
Meppershall, Rectory Road	0728	0928	1118	1328	1538	1747
Meppershall opp, Sugar Loaf	0730	0930	1120	1335	1540	1847
Sheffield, High Street,	0735	0935	1125		1330	

Route 89 to Henlow Camp – Meppershall - Hitchin					
Henlow Camp					
Sugar Loaf					
Hitchin, Bancroft	06:45	NSch	Sch	09:52	13:27
Hitchin Station		07:37	07:37	10:00	13:35
Hitchin, Bancroft		07:45	07:45		
Hitchin, Grove Road Rd		08:20	08:25		
Hitchin, Wilbury Way		08:23	08:35B		
Train departs to London	07:19				
Sch = School Days. NSch = non-school days.	07:22			10:35	14:10
		08:30	08:42		
	07:32				
	B =via	Girls	School		
Route 89 to Hitchin – Meppershall - Henlow Camp					
Train arrives from London					
Hitchin, Wilbury Way					
Hitchin, Grove Road,				17:05	18:16
Hitchin Station					18:20
Hitchin, Bancroft,					
Sugar Loaf	12:35	15:54B	15:57	17:12	18:27
Henlow Camp,	13:08	16:00	16:00	17:15	18:30
	13:16	16:33	16:33	17:48	On request
		16:41	16:41	17:56	

**A very HAPPY BIRTHDAY to those of you
celebrating birthdays in FEBRUARY**

Elodie Hunt who will be 5 on the 2nd
Gemma Parr-Smith who will be 12 on the 6th
Keira Thomason who will be 6 on the 6th
Joseph Fairy who will be 11 on the 14th
Evie MacCormick who will 11 be on the 15th
Benjamin Saunders who will be 5 on the 16th
Abbey Lowden who will be 11 on the 18th
James Wallace who will be 10 on the 19th
Emma Brightwell who will be 13 on the 25th
Jesse Gold who will be 13 on the 28th

If you are under 16 and would like your name added to
the birthday page, please call Louise Hutson on 814148