



Arms of the de
Meppershall Family

THE MEPPERSHALL MESSENGER



EDGAR ARTHUR WILLIAM HOLDEN
1923—2011

VOLUME 27 – Issue 3
JUNE 2011

Meppershall Village Website: www.meppershall.org

WHAT'S IN YOUR MESSENGER THIS MONTH?

Page

2	Editorial	
3	Readers' Letters	Anonymous resident & John Chapman
4	Bakery Bees	By Roger
5	29/04/11 and all that stuff	By Chris Waghorn
6	Parish Council Report	Last meeting of this Council
8	Your Shout	Eddie Holden
10	School Report	
12	Leisure Group	Far & Near
14	Financial news update	Thoughts on Investments
16	Polehanger Diaries	Weather or not; Oakley; 50 years ago
18	Meppershall's Past	John Blundell
20	Life on the Wild Side	Nepenthes Holdenii by Jeremy Holden
22	Wine Society	Oak
24	Calendar of events	June & July
25	Advert	Meppershall Music Festival
26	Young Messenger	Summer Word Search
27	Ringmaster	Local crimes and police advice
30	Advert	Summer Fair
31	Social Club News	
32	Village Hall News	AGM Notice + Summer Fair
33	Baby & Toddler Group	New Times
34	Meppershall Players	Forthcoming productions
35	Advert	Art Exhibition
36	MGC	Recent events + Fair competitions
37	Significant Birthdays	+ In Memoriam – Minnie Tink
38	Notice Board	Foresters + Wayne Allen
39	Cover Picture	+ Langford Tennis Club
40	Pre-school Ponderings	+ St Francis RC Church
41	St Mary's Church	Services in May
42		Notices
43		Letter from Pam Halliwell
44	Advert	Jonah Man Jazz
45	Recipe	Seafood Jumbalaya
46	Garden Tips	RHS tips for May
47	Birthdays	In June
48	The Messenger	The Team, Contributions, Disclaimer & Collating Dates

EDITORIAL

After something of a spate of deaths in the last few months, it is sad to have to record in this issue the deaths of two more prominent and well loved villagers, Minnie Tink and Eddie Holden. Both will be missed by their respective families and by the many in the village that knew and loved them.

In the Parish Council Report on page 6, Peter Chapman reports that he has been elected to serve a further (and final) year in the Chair, while Roger Bryant will serve a further year as PC Governor to the School, and Sandra Read has been co-opted again to fill one of the vacant places on the Council; the other is still open to a volunteer. Congratulations to all these office-holders.

One small innovation this month appears on page 38. Called simply "Notice Board", it aims to provide the facility for anyone to make a statement or an announcement to the rest of the village. Letters will continue on the Letters pages, but the Notice Board is for announcements not in the form of a letter. Please make use of this by sending me your notices or by leaving them in the folder in the Stores.

This is the last issue before the Summer Fair. Lots of people are working extremely hard to make this year a repeat of last year's run-away success. The work has gone in; only two things are needed now:

1. Weather like last year
2. A turnout like last year.

Come and support all the local organisations who are setting out to entertain you (and separate you from a little of your money!) and enjoy the community highlight of the year. As Roger says each month: "See you there."

Dick Bulley

LETTERS

Letter from a concerned resident.

Hi,

I was wondering if you could put something in The Messenger about youths riding mini motorbikes and quad bikes around and on paths everyday. Our front door is directly on a path and if they fly past as we or anyone else is coming out, they will hit someone, and it's constant noise. I have reported them a few times but I think it needs more people to do so, so that they are caught and stopped. Thank you if something could be put in; I just don't want a nice village turning into a place like others where this happens. Thanks again.

Name supplied

The police regularly urge us to report problems so that they can build up a picture. If any one has a problem similar to this resident, they should report it: the more reports go in, the more likely action will follow. - Ed

Letter from John Chapman

Hi Dick

I recently came across a film I took on VHS of the Meppershall School Concert 1981 having a 1920's theme; the show is very well done. The film shows the whole concert and all the children can be seen variously. At the end they are all presented with a commemorative Charles and Diana Marriage coin. Several of the children in this film now have their children at the school.

I have transposed the film on to DVD-R (VHS quality of course but digital sound). If anyone would like a copy they can get suitable information by emailing me on athought@f2s.com. The cost is £3.00 collected and £1.00 p&p if posted.

Kind regards

John

Meppershall Bakery Bees *by Roger*

It's May 10th and we are in the start of the swarming season. My inspection today started off as normal until I arrived at the apiary and saw a few bees going into an old nuc box which was stored over winter on some milk crates. I checked all five hives which are all okay and doing well. Two are stronger with two supers on and filling nicely with lovely honey. One of the strong hives is a little snotty and I received one sting on the arm. No swelling as yet.

Going back to the old nuc, I saw 30 or 40 bees flying around the small entrance. Blowing one or two puffs of smoke in to the entrance and under the lid. I could not believe my eyes! My first swarm of the year! The only thing was it had hived itself. When I took the lid off there were 3 old brood frames which the bees had started to clean up and in the middle of the nuc a field mouse had spent the winter, but had long gone. The bees had started to make wild comb and were bringing in pollen and honey.

The next day I returned to the apiary with a brood box containing 9 frames of foundation. Placing an empty hive next to the nuc I started to take the frames one by one looking to see if I could spot the queen. I did not see her at first but before I tipped the mouse nest out on to the floor, I checked the frames once more and there she was scurrying along the bottom of the frame, a big golden queen hooray! A lovely big queen and two or three hundred bees all in a new home. So now we have six hives. What a start to the season. (Back of the net)

I was asked in April if I would go to Campton School and show the children some of my bee equipment. I took along the empty nuc and some of the wild comb. The children had great delight in sticking their fingers in the fresh runny honey, which was mainly rape with some buttercup and horse chestnut, and having a lick. We also attracted some local bees as we were outside talking about the hives and equipment. I suppose it was the smell of the honey and comb that attracted them. It was a nice afternoon and a lot of questions were asked and answered. Perhaps a few little beekeepers in the making. See you all at the village show later this month with lots of fresh honey.

Honey available at Rogers Bakery. See you there.

29th April 2011 and all that stuff

Did you catch it on the telly? - The wedding's what I mean
 When Bill and Kate got married, our future King and Queen!
 I didn't watch it from the start - I don't get up at six
 For anyone or anything - I'm too old for such tricks.

I thought the bride looked beautiful and Bill scrubbed up quite well
 Tears of pride came to my eyes, I'm English – you can tell.
 Some folk'll tell you royalty is just a waste of space
 They cost a lot of money and they ought to be replaced.

That point of view I won't accept because it just ain't true;
 They do an awful lot of good for folks like me and you.
 Let's face it – in a single day they put us on the map
 The world was tuned to Britain so don't get in a flap.

No other country in the world has got what we have got
 And I'd be feeling nervous now had I been born a Scot.
 They want to go their own way – Independence - yeah, then what
 Salmond stand for President? Is he the best they've got?

O K – like any family, the royals ain't all good
 But overall they'll do for me and all the doubters should
 Consider the alternatives – President? Dictator?
 Another Olly Cromwell? - Go on, I'll see you later.

For pomp and ceremonials our record is the best
 And on that day we proved it when we put it to the test.
 Our organising's brilliant - well, we've done it long enough
 A thousand years of history - just watch us strut our stuff.

So in a way, the wedding was just a practice run
 For sorting out th'Olympics - now there we'll have some fun
 Historically we're best of all - it shows up in our genes
 And part of it's the royals, and at their head – the Queen.

Chris Waghorn.

Meppershall Parish Council Report

This report is for the latest meeting of the Parish Council which was held at Meppershall Village Hall on Monday 9th May 2011 and which was the annual meeting where the Chairman and other posts are elected.

I have been elected to complete my final year as Chairman (no Chairman can be elected for more than three consecutive years) and all the Councillors signed their declaration of office. The next item was to decide how to fill the two vacancies on the Council: one position was filled by co-opting Mrs. Sandra Read back on to the Council; the other post is still vacant. If anyone is interested in joining the Council please contact the Clerk or myself. Dave Foskett is once again Vice Chairman and Roger Bryant is remaining the Parish Council representative on Meppershall Lower School Board of Governors. Cllr Martin Morris is the new representative on the Village Hall Management Committee. The spokesmen for the groups remain the same.

The elections to Central Beds Council resulted in Tony Brown and Lew Birt being returned with a larger majority.

In the open part of the meeting, a landowner in Shefford Road complained about the rabbits coming onto his land from the small wooded area known locally as 'Carne forest'. He said that it was difficult to do anything because of all the brambles in the trees.

A complaint was also received about the amount of litter in the play areas and it was suggested that it may be caused by the litter bins being in the wrong place.

Planning & Housing (spokesman Cllr. Peter Chapman)

Recent Applications: - none received.

The application for a house on the land behind 47 Hoo Road mentioned last month has been refused.

Notification has been received about Neighbourhood Planning as it may be enshrined in the Localism Bill which is being debated in Parliament. The Parish Council will be able to produce a Neighbourhood Development Plan (NDP) which will establish general planning policies for the development and use of land in the neighbourhood. The NDP will have to meet specific criteria, be passed by an independent assessor and be accepted by the Parish in a referendum, but it will help stop unwanted development and make it easier for special schemes required by the Parish to proceed. We await the legislation.

A representative of Aragon Housing had asked the Clerk for his thoughts on using the ground where the garages sat behind the houses in Cracklehill Road for use as additional parking. As this area would be accessed from Shefford Road along the track owned by the Parish Council, the Clerk said the Council would be against the plan and, if they wished to continue with the idea, Bob Hoskins would have to attend a future meeting to explain the rationale behind the scheme.

Highways & Lighting (spokesman Cllr. Roger Bryant)

Cllr Bryant reported that he just received an e-mail saying that improvement to the road surface of Chapel Road would take place in June.

Environment & Leisure (spokesman Cllr. Paul Merryweather)

The container behind the village hall should have been moved by the date of this meeting, but unfortunately the mother of one the people who was to carry out the work had died. It should now be moved in the next fortnight.

The Village Caretaker reported that the wooden surrounds of the safety surfaces were broken. It was agreed that a contractor to be asked to carry out the repairs.

Old Road Meadow:

Tony Edwards who, for many years cut the grass in the meadow, is no longer in a position to do so therefore the work has been added to O'Connor's grass cutting contract. The Council would like to thank Mr. Edwards for all his efforts in making the area what it is today.

The weed control has been undertaken and there was a lot less weed to control this year

The next Parish Council meetings will be held Mondays 13th June and 25th July 2011 at Meppershall Village Hall, both commencing at 7.45pm.

Peter Chapman - Chairman of Meppershall Parish Council

YOUR SHOUT with Trevor Thorley

EDGAR ARTHUR WILLIAM HOLDEN: Strangers entering Meppershall in the afternoon of Tuesday, 10 May 2011, could have been forgiven for thinking that they were witnessing a Classic Car Rally, but they would have been wrong. TR Classic car enthusiasts from up and down the country had journeyed to Meppershall in their gleaming cars to pay their last respects to their friend, Eddie Holden, who passed away on 17 April 2011. The cars processed to St. Mary's Church to join many local friends and family for the funeral service in St. Mary's to celebrate Eddie's life.

Eddie was carried into church to the music of 'Fields of Gold', which was followed by a welcome from the Rev John Harper and with words of scripture and opening prayer. The first hymn was a rousing rendering of 'Jerusalem', followed by a poem 'Chestnut Candles Are Lit Again' by William Kerr and then a reading from St. John's Gospel, Chapter 14, verses 1-7. This was followed by Simon Holden's tribute to his father. Simon commenced by saying how his mother Jean and family were overwhelmed that so many had turned out to mourn his father's passing and to celebrate his life. All present joined the family in a round of applause for the life of **EDGAR ARTHUR WILLIAM HOLDEN**.

The service concluded with the hymn 'Who Would True Valour See', the Lord's Prayer, the hymn 'Abide With Me' and the recessional music of 'Lara's Theme'. Eddie was laid to rest in St. Mary's Church grounds. Afterwards all were invited back to the Sugar Loaf to join Jean and other family members for refreshments.

Edgar Arthur William Holden was born to Arthur and Edith Holden in Brixton on 2 April 1923. After moving out to North West London Eddie was educated at Quainton Hall School, Harrow. In 1939, aged 16, he left to join the Royal Air Force at Cranwell, and went on to serve for 12 years in defence of his country, of which he was very proud. In 1951 Eddie moved to Hertfordshire and commenced work at Kodak. In 1963 he bought his first TR3 and later that year met his wife to be, Lillian Jean and they married in early 1965.

There were two sons, Simon and Jeremy; Jeremy was unable to get back from an expedition in Burma, but in early April he had returned home and had been able to spend some quality time with his brother Simon, his mother and of course their dad.



In 1976 Eddie bought a TR4, and he and Jean joined the TR register, a shared interest which lasted until ill health in 2009 enforced the sale of their beloved TR5. During this time Eddie was group leader of the Lea Valley TR club, overseas co-ordinator for the TR Register and Honorary President.

LITTER CLEAN-UP: Just a reminder that if you have a spare hour or so, and I am sure that you have pride in your village, then please join Pam Halliwell and others at 9.40am outside the Village Hall on **SATURDAY, JUNE 11 AT 9.40AM** for a litter clean-up exercise. Gloves will be provided but please bring along a couple of plastic bags.

REMEMBER IT'S YOUR SHOUT!

Trevor Thorley. Tel: 01462 813357
trevor.thorley1@btinternet.com

Meppershall VA CE Lower School

*'An outstanding Church of
England School'*

June 2008 and December 2010



Our summer term this academic year is a very short one, so it will be action packed as usual. We started off with our own celebration of the Royal Wedding. Everyone came dressed in their finest clothes and hats, our hall was decorated with bunting and flags and we ate our lunch from Union Flag plates with matching napkins and cups. At the end of the day we received a visit from two surprise guests who visited our assembly where parents and friends alike waved flags and sang the National Anthem. Our PTA presented every child with a commemorative bookmark and we all went home ready to celebrate a moment in history.

We hope the good weather continues as we have many sporting fixtures to attend this term too. Some are organised by Redborne School Sports Partnership and others by us and our local Middle Schools. Our Oaks class has already taken part in a swimming gala and they are starting swimming lessons at Flitwick Leisure Centre this term too. Other fixtures from Redborne include a tennis tournament. We will be taking part in the annual Henlow Middle School football tournament with a team coached by Mr. Smith and Mr. Clark. Hazel's class learnt some French Country Dances this year and they will be teaching them to the other children and indeed yourselves at the Meppershall Village Fair!

As usual in the summer term we are out and about a great deal. Some of you may have seen some of our younger children at the allotments learning about how things grow. We have organised trips to local farms and museums in London. Our Oaks class will also be taking part in a Lifepath event at Elstow Abbey based on the life and work of John Bunyan. They are busy learning the songs so they can join in with the other schools and the rock

band who accompany them. Hazels class will be taking part in the national initiative 'Sing Up' at The Corn Exchange in Bedford.

So as you can see another busy time is ahead of us at Meppershall Lower School!

Lyn Fairweather - Headteacher



St Mary's Church Meppershall tea towels and mugs for sale!

Did you know that you can easily buy mugs and tea towels commemorating our beautiful church of St Mary's at the Village Stores? Please have a look! The quality Linen Union tea towels also show other important village institutions (village hall and the school, to name a couple) drawn by a local artist. Both mugs and tea towels have the attractive traditional blue colour of St Mary.

Prices are as follows:

Linen Union St Mary's Tea Towels: 1 for £4.50, 2 for £8.00, 3 for £12.00, 4 for £15.00. St Mary's mugs: £3.50 each or 3 for £10.

Rest assured that all proceeds from the sale of these items go towards church funds. With thanks for your valued support.

SHEFFORD LEISURE GROUP

Although we were few in numbers our second visit to the Newmarket Gallops was a huge success. We were joined again by Janet our guide who was just as interesting and hilarious as before. The Gallops proved to be spectacular particularly in the early morning sunshine where we were able to see at very close range the jockeys exercising their horses and passing the time of day; some of their comments were quite amusing. From there we made our way to Tattersalls where some of us decided we would sit and bid for one of the classic race horses. (In our dreams!). Our onward journey was to the Stud where coffee and biscuits awaited us before joining with the public tour of the Stud. We were taken through the Stud, stopping along the way to see the mares and their foals before being taken to their nursery. The Guide on this occasion was both interesting and humorous, explaining the work carried out in the nurseries! Our volunteer guide was particularly funny as he was telling us he wasn't as good as the rest of the guides and then his 'bus' broke down!! and we waited for a replacement. The afternoon was spent in Newmarket itself where we were able to enjoy lunch at either the museum gardens or the local pubs. After which there was a little free time before wending our way home after a very exciting day.

Early in May, we made our way in our own cars to Moggerhanger, originally planned as a 'bluebell walk'; unfortunately due to our climate the bluebells had flowered earlier than expected! However, it did not stop our people from taking a stroll through the woods prior to meeting at the house for a tour. The house itself is steeped in history, very interesting and well worth a visit and afterwards, the highlight of the day was for us to take afternoon cream tea, beautifully served sandwiches followed by delicious cakes – we all agreed what an interesting afternoon it had been.

Our day trip to the Historic Dockyard at Chatham, turned out to be very interesting, there really is so much to do and see one could not possibly cover the complete Dockyard. On arrival we were given maps of the site before making our way to the restaurant for a welcome drink and to meet our guide. We then boarded our coach for a guided tour of the Dockyard and to learn a little of the history before returning to the restaurant for a delicious lunch. Afterwards we had a tour booked at the 'Ropery', where our Guide 'Rose' was waiting for us ready to explain how rope was made and how many miles of it were used to secure the cannons and sails etc. on The Victory and other vessels of that nature. Rose really sounded like a 'cockney' and her sense of humour had us all laughing. She showed us how rope was made and four of our 'males' were chosen to assist her with the machinery. Rose certainly kept them in order and presented them with a piece of rope for their trouble – 'I think it will be a day to remember!'

Next month, we will be able to report on our trip to Frogmore Paper Trail at Hemel Hempstead. This is a most interesting trip where you not only learn but can make your own paper!

Forthcoming Events 2011

Frogmore Paper Trail & short river trip	Sunday 5 th June
Tour of the Cotswolds	Thursday 16 th June
Afternoon tour of Chicksands Priory	Sunday 17 th July
Black Country Museum	Thursday 28 th July
Lincs Heritage Aviation Centre Air Show	Saturday 6 th August
Grebe canal cruise with cream tea	Sunday 21 st August
Wizard of Oz (Matinee)	Wednesday 31 st August
Ashdown Forest Explorer	Thursday 8 th September
Pembrokeshire and Tenby	Mon.10 th – Fri 14 th Oct
Thursford Xmas Spectacular (evening perf)	Wed 16 th & Sat 20 th Nov
Christmas in the Royal Landscape	Thursday 1 st December
Carols with the Stars at RAH	Thursday 8 th December
John Rutter Xmas Celebrations RAH (Matinee)	Saturday 10 th December
Brick Lane Music Hall, including lunch	Tuesday 20 th December

London Theatre trips are available with a coach 'pick up' in Shefford. If there is a particular show you would like to see, please don't hesitate to contact me. I am only too happy to help. Shows currently available-
 Matinees: Love Never Dies; Royal Ballet Romeo & Juliet; Legally Blond.
 Evenings: Les Miserables; Million Dollar Quartet; The Wizard of Oz.
 For all holidays which include hotel accommodation, Shefford Leisure Group acts as an agent for the Tour Operator, their terms and conditions apply.

Enid Pamment, Shefford Leisure Group

Shefford Leisure Group is open to everyone in the local community who would like to join us on our ventures. We are always happy to meet new friends. Raffles are held and the proceeds are for Keech Cottage Children's Hospice. For further information regarding dates, prices and availability or to receive our monthly newsletter, please contact Enid on: 01462 851397 or e-mail Enidpamment@aol.com

Financial News Update

A significant part of the work I do involves helping people to make the most out of their investments, having regard to their appetite for risk, the length of time they are prepared to invest for, and whether they are needing an income from the investment, or just wanting capital growth amongst some of the many factors to consider.

In the current climate it is understandable that people are feeling more cautious, and are reluctant to invest for fear of it going down in value. As a result a great many people are inclined to keep all their money in Bank & Building Society accounts. It is important to keep some money in readily accessible form, however beyond that many would benefit from having a spread of different investments.

If I were to say to a client that I could pretty much guarantee to lose them up to 3.5% a year with little effort, they would quite rightly show me to the door; however by keeping all their money in cash, that's exactly what they are already doing! The belief that cash deposits are risk-free is a myth; any investment that returns less than inflation is losing money on the grounds that you can buy less with it now than you could previously. Inflation is currently running at 4% and predicted to reach 5% soon, and so anything earning less than this (i.e. every deposit account) is declining in 'Real' value.

Deposits do not go down in absolute terms, but they do not go up much either. Other types of investments do of course go up and down to various extents and it is this that tends to put people off buying them. It is normally recommended that non-cash type investments be entered into with the intention of investing for at least five years to give the short term ups and downs time to even themselves out. One could be forgiven for thinking that the banking crisis/recession of 2007, 2008 etc., had resulted in negative investment returns, and that money was safer in the bank? Well, over the last five years the UK Stockmarket has returned nearly 20% growth despite the recession.

Over the longer term it has returned nearly 10% p.a. on average. Sure, there have been good years and not so good years, but if you hold your nerve and ride it out you will do well.

This brings me to another important aspect, and that is the time in the market. Trying to play Warren Buffett and swapping and changing can be very costly indeed. Here are some fascinating statistics to illustrate the point: an investor who put money into the UK Stockmarket on 31st March 1990, and stayed invested throughout for 20 complete years would have seen the ERM crisis (UK interest rates at 15%), the first Gulf War, the Dotcom crisis, 9/11 attacks, the Russian Crisis, the second Gulf War and the banking crisis/recession. Despite all of this their investment would have produced an average annual return of 8.7%. But...if they had tried to predict the market and had missed the best 10 days in 20 years, they would have seen their return fall to an average of just 5.4% p.a. Miss the best 20 days in 20 years (i.e. just one day a year) and your return falls further to 3.2%. In the extreme, if you had missed the best 40 days you would have lost 0.2% p.a.!

So the moral of the story here is to invest for the long term (at least 5 years), in a well diversified manner, and leave well alone – let the experts look after it, and you will do well. Leave it in the bank and you are guaranteed to lose money. Remember the saying about the rich getting richer.....? Well this plays a part, ‘Real returns’ i.e. those above inflation are the ones that increase wealth, and to get those you have to invest for the longer term.

Jon Ingarfill

Tel: 07870 564115 or email: jon.ingarfill@pocockrutherford.com

Polehanger: A Farming Diary

Episode 23

Weather or not

The very dry weather continues. Only 12" have fallen since the beginning of September 2010. This is very bad news for crops in this area, particularly those sown in the spring. Our winter wheat is suffering and we estimate a potential yield loss of 25% as I write, and it's likely to become higher as there is no sign of significant rainfall to overcome the soil moisture deficit. Some areas of the country had a good 1" or more last week end (7/8 May) but we had less than ¼".

This is all part of the challenge of farming

Virtually the whole of Europe is suffering from lack of rainfall. Ironically the area that is not suffering is the Spanish and French Mediterranean coast!

There is also widespread drought across the main wheat growing areas of the US apparently although the Missouri/Mississippi river is on the highest level of flood alert since 1925.

Strange goings on weather wise . . .

Oakley: a month in the life of a wheat plant

My comments in the May issue were relevant for a normal season, but this isn't one. Oakley is suffering and there is nothing we can do to help. The plants are stressed and a paler green than they should be. Fungicide will be applied to combat fungal 'rust' disease which is prevalent in these conditions. The top flag leaf and the grain bearing ear must be kept healthy in order to have the maximum surface area to photosynthesise, and make the most of difficult conditions.

Wheat prices have remained high though volatile on the back of a world - wide reduction in strategic reserves and harvest predictions. This should offset the yield reduction, if those prices remain.

The worst effects of the drought on wheat can be seen on 'light' sand and chalk soils. Our heavier clay soils hang on to moisture relatively better. The best resistance to the drought seems to be where we had years of grassland and a consequent build up of fertility and water retaining organic matter.

Elsewhere on the Farm

About 15 years ago we planted Chestnut trees down the farm drive. The leaves on most of them are turning brown by mid May. Is this drought stress from which they will recover or the 'new' chestnut fungal disease from which they may not? It will be a shame if we lose them. It takes the best part of a generation for a tree to grow to a decent height.

Global Issue

I had intended to refer last month to the Foresight Report, published by the UK Chief Scientist, Sir John Beddington. In it he addresses the issue of how to feed an ever increasing world population with only modest increases in land available, without destroying the natural environment. He identifies the following 5 challenges (in simple terms):

- Balancing supply and demand to keep food affordable
- Ensuring a stable food supply to protect the poorest from food price volatility
- Achieving global access to food and an end to 'hunger'
- Managing food production to reduce climate change due to greenhouse gas emissions
- Managing biodiversity whilst feeding the world

Overall, the report concludes that a more integrated approach to global food security is needed, given the inevitable pressure on water supplies, energy and land use, together with problems of increased volatility which is itself a factor of higher demand and low world food stocks.

Some challenge then . . . !

Warm off the Press

64 million people in Asia could be pushed into poverty by the record increase in global food prices in the first two months of 2011.

650 price lines slashed at Booker cash and carry.

50 Years Ago: Michael Foster's Diary Extract

24th May: spent morning carting 6 tons sugar beet pulp (cattle feed) from Shefford (railway) station

28th May: afternoon spent making tree hut for boys (then aged 10 and 9!) so only 1 hr in the garden in evening.

29th May: very hot all week. Flat out irrigating Brussels plants just transplanted (into field for winter hand picking).

18th June: Village Hall Fete

Thought for the Month

Looking at the 'Warm off the Press' statistics makes me wonder how complacent we have become in the affluent west.

Chris Foster: 10th May 2011

The History of Meppershall - 11

Based on documents from the County Archives and the Public Record Office

Dear Cousin Thomas,

1733

William and I are relieved that the Quarter Sessions trial is finished - we gave evidence last week. If you remember, William Christmas, a village labourer, was being tried for the theft of one and a half bushels of peas from our barn.

It is many years since there was a theft in the village that went to the courts. The older people do remember that there was a lamb stolen from Polehanger and two sheep stolen from this farm but it seems that they can remember no other thefts that were not dealt with here in the village. I do feel slightly uncomfortable about the situation, however we did have the right to do so and given that not four weeks ago we gave sixpence each to many of the poor people in the village out of charity of the heart I do feel that it was disgraceful of anyone to then steal from the barn.

We now await the sentencing.

Cousin John Blundell

My dear Nephew,
6th March 1760

I write with curiosity to ask whether your village has received any foundlings from the Thomas Coram Foundlings Hospital in the city of London. If so I would be grateful for any details about the fate of such foundlings. It is due to the delicacy of this matter that I refrained from writing to my dearest niece, your wife.

Following the 1756 ruling in the House of Commons that all children presented to the hospital would be received, wet nurses were found

in the countryside for large numbers of such infants. The payment received has been a great attraction to village mothers of course.

In just under four years seven of these poor unfortunate infants have joined William's little adopted daughter Sarah and his true daughter Mary in our churchyard. Last year, of the four people dying in Meppershall three of them were London foundlings and I have just heard that the second foundling death this year has occurred.

Unlike my nieces there buried, the infant will not leave grieving parents. My poor unhappy brother William [*this is how John referred to his brother at this time*] is under the care of doctors and I miss his company badly. I would not wish such deep, long lasting and crippling grief on any person.

I await your response with interest.

Yours,
John Blundell.

At this time a few members of the clergy and some doctors ran small asylums for gentlefolk, the only alternative to Bethlam Royal Hospital, known as Bedlam in London. It is assumed that William went to live at one of these places.

In the four years that the practice of sending foundlings to the country lasted, it cost the government £500, which horrified the House of Commons who ceased funding in 1760. Of the 14,934 infants left at the foundling hospital in London in the four year period, and farmed out to new mothers in country villages, only 4,400 survived.

Copyright Sandra Read, Manor Farm. Not to be reproduced without permission.

Nepenthes Holdenii

When I called my parents to inform them that the Holden name was about to have a historical continuity they naturally assumed I was, at last, announcing the future arrival of a dusky-skinned grandchild. I quickly amended the misconception with the news that I had discovered a new and interesting plant that, when it was finally described, would bear the Holden name. This particular plant was interesting because it was carnivorous; a type of insect-eating pitcher plant of the Old World genus *Nepenthes*. From obscurity in the mountain forests of Cambodia's Cardamom Mountains it was about to enter the scientific world as *Nepenthes Holdenii*.

Discovering a species new to science may seem like a singular event in itself, but over the years it has become a familiar part of my work in the rain forest. It is generally assumed that with the world now so thoroughly trampled there is nothing new left to find. This, as any biologist, - tropical, deep sea, or micro- knows, is not the case. There are currently around 2.5 million species recognized on the planet: most biologists agree that the final number will exceed 10 million, while some put the figure as high as 30 million.

I am not a scientist, just a photographer with an eye for detail. Nevertheless, in the past decade I have either discovered, or been party to the discovery of, about a dozen new species. The most notable of these was a small tree frog with green blood and turquoise-coloured bones. Others have included a red-eyed snake, a cave-dwelling gecko, and most recently a blind and legless lizard. Most of these new species were cryptic and nocturnal and not easily stumbled across: their discovery reflected many hours tramping through the night time forests with a torch, sometimes in the company of tigers and unfriendly elephants. Stumbling across an undescribed and flamboyant carnivorous plant was of a different order. *Nepenthes* are not easy to miss. They grow as a straggling liana often bearing large and colourful pitchers that are in fact modified leaves containing a soup of digestive juices.

It is not actually very difficult to find a new species. Go into the rain forest with a mercury-vapour light trap and within a single night it is very likely that a new species of insect will turn up – a jewel-like beetle or a slender snout moth. Finding someone to identify this as a new species is the hard part. I first found *Nepenthes Holdenii* five years ago. I photographed it and tried to identify it later. Due to Cambodia's unsettled past, little field work had been conducted in the kingdom for many years and botanical texts that could pin down the identity of the plant proved hard to find. Contacting experts in the field I eventually found a French national who thought the plant might be new. In a flurry of excitement he came out to Cambodia and we made the gruelling trek up into the mountains. Within ten seconds of seeing the plant he announced it was a new species, and for my diligence he was going to name it after me. At first I was uncomfortable with this. Although not uncommon, the practice of naming a species after an individual has fallen out of fashion. At best it is seen as not giving the species a nominal link to its environment or a particular unique characteristic, at worst as smacking of imperialism, especially if the name is not that of a national from the country in which the species occurs.

Before a species can enter the scientific literature as valid it must first be rigorously described and given a binomial scientific name, often but not always derived from the Latin. This description is then reviewed by at least three independent experts. If they are convinced of its veracity it can be published. The first species I found was named *Philautus cardamonus* - *Philautus* denotes the family and *cardamonus* the Cardamom Mountains where it was found. Similarly, the green-blooded frog was given the specific name *samkosensis* after a particular mountain. In conservation circles this type of naming is preferred as it helps to highlight the habitat, which more often than not is threatened. With this in mind I declined permission to give my name to this species. However the choice lies with the person doing the describing, and in this case I was overruled. This new carnivorous plant was going to be named *Nepenthes Holdenii* whether I liked it or not. On reflection I decided I did like the idea. Unlikely ever to have children, this could serve as my legacy. I was amused by the irony, too: a carnivorous plant named after a vegetarian – beautifully ironic.

The Wine Society's Guide To Wine Tasting

The benefits of learning how to taste wine are both immediate and tangible. Being able to interpret appearance, smell and taste in the glass, and recognising the characteristics of the small number of grape varieties which lie behind most wine labels not only enhances enjoyment, but boosts wine confidence, two excellent reasons for learning the ropes. Anybody with working faculties and the will to succeed can do it, and, with a little practice, achieve a good standard of wine appreciation. This monthly guide aims to set out the general principles of tasting and understanding wine. We have looked at grape varieties, vineyards and winemaking – this month we see where they grow

3. Oak

The vanilla aromas and toasty flavours which are present in wine which has been fermented and/or aged in a barrel are instantly recognisable. The mighty oak has always been associated with wine production from *quercus suber*, the bark of which is used to manufacture cork, to the many species of coopering oak which fall into two groups: European or American. Within these broad categories are several regions of production, each with its following, and each different, as befits a natural product. To complicate matters further, the inside of a barrel is finished by firing on a range or lightly toasted to charred, all with their own effects on the wine which will be stored in them. Two more things to consider are the age of the barrel, the intensity of which decreases with time, and its size. Very large barrels influence texture more than taste, so that wines fermented or aged in them may display more subtle effects of oak, such as a creaminess of taste, or roundness of texture.

A producer's investment in wood can be enormous, as in the case of premium wines, including the top châteaux of Bordeaux, which use only new wood. At the other extreme, the use of wood chips to flavour everyday wines provides a quick and inexpensive fix, at around 5% of the cost of a new barrel. The winemaker's decision is not, however, based only on price. Some grape varieties are better suited to oak than others, and vintage characteristics also have a part to play, as does wine style. The differences between a gently oxidised tawny port, aged entirely in cask, and a deeper-coloured, fruity vintage Port, aged in bottle, are striking.

If oak provides an enormous range of options for the winemaker, for the wine drinker it is very much a matter of personal choice. With practice, it becomes easier to separate these different elements, and to evaluate the degree of oak which is acceptable to your own palate.

.....

Next month, we shall look at tannin and acidity.

For more information about The Wine Society, including how to join, go to www.thewinesociety.com/join

Life membership of The Society can be yours for a one-off payment of £40, giving you a share in this co-operative business.

June 2011

Saturday 4th		
Meppershall Art Exhibition	2.30 – 5.00 pm	Village Hall
Meppershall Music Festival	7.30 pm	Village hall
Thursday 9th		
Village Hall AGM	8.00 pm	Village Hall
Saturday 11th		
Village Clean up	9.40 am	Outside Village Hall
Sunday 12th		
Shefford Gala	10.00 – 4.00 pm	Shefford
Monday 13th		
Parish Council Meeting	7.45 pm	Village Hall
Saturday 25th		
Meppershall Summer Fair	1.00 - 5.00 pm	Fosters Field
Summer Fair Disco	8.00 pm	Social Club
Monday 27th		
Messenger Collating	2.pm	Snooker room
Wednesday 29th		
Meppershall Players AGM	7.45 pm	Village Hall

July 2011

Saturday 2nd		
RBMS Summer Ball	8.pm - midnight	Robert Bloomfield, Shefford
Saturday 16th		
Foresters Social Nite	8.pm - midnight	Village Hall
Monday 25th		
Messenger Collating	2.00 pm	Snooker room
Parish Council Meeting	7.45 pm	Village Hall
Mon. 25th Thur -28th		
Sparks	10 am – 2 pm	St Mary's Church
Saturday 30th		
Neil Sartain		Village Social Club

MEPPERSHALL
MUSIC
FESTIVAL

SAT. JUNE 4th

7.30pm

VILLAGE HALL

£5 & £2.50

**[Tickets available from P.O.,
Bakery, Rectory & 813334]**

BAR

**PROFITS for garden furniture
for Lavender House,
Meppershall Nursing Home.**

**Sandra Harper 813334
sandray.harper@yahoo.co.uk**

FROM OUR YOUTH EDITOR – Brigid Holmes

Summer Word Search

BARBECUE

CAMPING

FISHING

FRISBEE

ICE CREAM

PICNIC

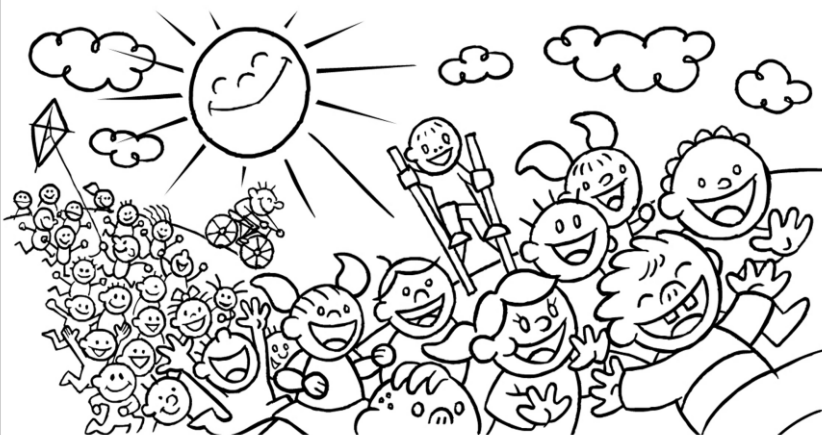
POOL

SUNGLASSES

SUN TAN

VACATION

M	B	P	A	P	N	Z	E	N	B	P	G
X	A	L	I	A	A	U	H	O	F	O	N
C	O	E	T	C	C	Q	B	I	R	O	I
O	A	N	R	E	N	V	V	T	I	L	H
X	U	M	B	C	B	I	N	A	S	L	S
S	C	R	P	Q	E	I	C	C	B	R	I
T	A	S	K	I	A	C	L	A	E	Z	F
B	S	N	N	Y	N	L	I	V	E	Z	T
S	E	S	S	A	L	G	N	U	S	A	L





This is a Ringmaster message from Bedfordshire Police. Please pass the details of this message on to any friends and neighbours.

Bedfordshire Police ask residents in Meppershall to be vigilant and to report anything suspicious immediately, after a metal theft took place in the High Street, this weekend. The offence took place between 9:00 a.m. on the 29th and 10:00 a.m. on the 30th of April. The offender climbed onto the roof of the garage and removed the lead. If you have any information about this crime or other suspicious incidents, please call the Police Control Centre on (01234) 841212, and quote crime reference, J, D,/,1,8,0,6,3,/2011.

Bedfordshire Police are repeating this warning following a spate of lead thefts. In the last four days thieves have targeted several homes in the Henlow and Biggleswade areas and stripped relatively easy-to-reach lead flashing, such as that found around bay windows. The incidents, which happened during the day and night, follow a similar series in the Spoundell area of Dunstable the previous weekend and coincide with high scrap metal prices. However, householders can help by remaining vigilant, moving items that can be easily climbed and contacting police the moment they spot anything suspicious. They will not mind if a call turns out to be a false alarm.

Ways to protect lead include:

- Coating it with anti-climb paint, which makes it messy and difficult to remove. The paint is non-drying and marks clothing and skin, helping to identify offenders
- Forensic marking helps identify stolen metal and trace it back to the owner. Products available include SmartWater, Red Web and SelectaDNA Grease
- Check your roof regularly, since the earlier you report a theft the more chance there is of finding the stolen metal, particularly if it is marked
- Regularly check the perimeter security of your home and bolt gates to the rear garden. Ensure security lighting is in good working order.
- If lead or copper is due for replacement, consider modern alternatives that are less attractive to thieves.

Residents in Meppershall are also asked to review the security of all garages and outbuildings, after a burglary took place in Buxton Close. The offence took place between the 1st of February and the 16th of April. The door was forced open and a large amount of fishing equipment has been taken. If you have any information about this crime or other suspicious incidents, please call the Police Control Centre on (01234) 841212, and quote crime reference, J, D/,1,6,0,2,8,/2011.

Outbuildings, sheds and garages can be especially, vulnerable to criminals, and are often not the best place to store high value items. Always lock shed and garages, and help keep sheds secure with a good quality padlock, and hasp. If possible anchor down items, like bikes and lawn mowers. Consider an alarm and make sure your security lighting is covering your shed and garage.

Bedfordshire Police remind vehicle owners to remove all property from vehicles when parked, after a theft took place in Orchard Close,

in Meppershall. The offence took place at 3:00 a.m. on Monday the 9th of May. The vehicle was a White, 05 registered Citroen Berlingo. The rear window was smashed and power tools were taken from the back of the vehicle. The owner heard the sound of breaking glass and has heard someone running from the vehicle. If you have any information about this crime or other suspicious incidents, please call the Police Control Centre on (01234) 841212, and quote crime reference, J,D,/,1,9,3,8,0,/2011.

A similar offence took place between 6:30 p.m. on the 7th and 6:35 a.m. on the 8th of May. The vehicle was a green, Y registered Vauxhall Vectra. A side window was smashed and a nail gun was taken. If you have any information about this crime or other suspicious incidents, please call the Police Control Centre on (01234) 841212, and quote Crime reference, J,D,/,1,9,3,8,1,/2011.

Please remember to remove all valuables from the vehicle when ever it is left unattended. Remember to remove the holder for any Satellite Navigation Systems or Mobile phones, and clean away any marks left on the windscreen or dashboard. Leaving the empty glove box open will also discourage an offender breaking into the vehicle.

For more information on reducing vehicle crime visit http://www.safer-beds.org/rmwebportal/rm_desktop/files/Crime%20Reduction%20-%20Vehicle%20Crime.html

Thank you for your support.

MEPPERSHALL SUMMER FAIR

SATURDAY 25th JUNE 2011 : 1pm – 5pm

Officially opening by Mrs. Nadine Dorries MP

***Lots of stalls, attractions and fun for everyone
including***

***Crafts and Accessories, Children's Rides,
Scruffs, Stocks and
Entertainment in the Central Arena***

***See you all there for what is going to be a wonderful
village event!***



Remember, it's your village. It's your Village Hall!

MEPPERSHALL SOCIAL CLUB

Regular Activities:

Tuesdays:	Darts
Thursday:	Dominoes/Crib
Friday:	Bingo Night

If you don't fancy any of the above, why not pop in on any night for a friendly chat and a drink? And become a member:

Family membership	- £15.00
Single membership	- £7.50
OAP Family Membership	- £10.00
OAP Single Membership	- £5.00

See a member of the bar staff for a membership form.

We also have two full size snooker tables open to members only, so why not become a member and come and enjoy yourself?

SPECIAL ATTRACTIONS FOR 2011

25 th June	SUMMER FAIR DISCO with A/C	All Welcome – Mums, Dads, Kids
30 th July	NEIL SARTAIN UB40, Bob Marley & Reggae	Ticket only: £5.00 & £3.00
24 th Sept	DENNI Fantastic Soul Singer	Ticket only: £5.00 & £3.00
29 th Oct	HALLOWEEN DISCO with DJ Ben	All Welcome – Mums, Dads, Kids
5 th Nov	BONFIRE NIGHT DISCO with A/C	All Welcome – Mums, Dads, Kids
24 th Dec	XMAS EVE DISCO with A/C	All Welcome – Mums, Dads, Kids
31 st Dec	NEW YEAR'S EVE DISCO with DJ Ben	All Welcome – Mums, Dads, Kids

Watch out for posters & banners around the village and in the Social Club for these fantastic events. For tickets and any queries, call Louise Savory on 07909 600199 or call round to 8, Hill Top View, Meppershall.

MEPPERSHALL VILLAGE HALL NEWS

*Notice is hereby given of the Village Hall Committee
Annual General Meeting*

Thursday 9th June 2011 at 8pm in the Village Hall

Approval of Previous Minutes

Treasurer's Report

Chairman's Report

Elections and Replacements

Any Other Business

Date for Meeting of New Committee

*Everyone is invited to attend and we look forward to seeing
you all there.*

Remember, it's your village. It's your Village Hall!

~ ~ ~ ~ ~

MEPPERSHALL SUMMER FAIR

Yes, not long to go now. We are all looking forward to seeing ***everyone*** on Saturday 25th June for a really fun day. We have loads of attractions, stalls, food, drink and entertainment. We are delighted to announce that ***Mrs. Nadine Dorries MP*** has agreed to officially open the fair.

We had asked for donations for the bottle stall – our last plea managed to generate one bottle from the entire village!! Not what you would call a great success. Surely, more of you must have a couple of spare bottles in your cupboards (anything at all that is stored in a bottle is what we are after). Please have another look and drop as many as you can into the shop (not literally). Also, volunteers on the day would be most welcome. Please leave your name and contact number with either Steve or Linda at the shop.

We look forward to see you all on Saturday 25th June at the Meppershall Summer Fair 2011. Thank you.

Meppershall Baby and Toddler Group News



New Opening Times!

Tuesdays 1:30 – 3:00pm

Do you look after a child under five years of age? If so – come and join us for:

- Variety of toys – including dressing-up clothes and ride-ons
- Craft table
- Refreshments
- Singing/games
- Separate baby area
- Friendly atmosphere
- Holiday meet-ups in local areas
- Parties – including bouncy castle

and lots more!

We meet in Meppershall Village Hall on Tuesday afternoons (term time only) and welcome new members. First session is FREE!

Come and find us at the Village Fete!

We are still collecting books for our stall – if you have any to donate (adult or children's) – drop into the village hall on a Tuesday afternoon or call Catherine (812134) to arrange collection.

For further information call Sam: 07590290078



The Meppershall Players



I don't know about the rest of you, but I can't believe its June. This year is just flying past. The "Evening of One Acts" which we'd been rehearsing for, has now taken place and was well received by appreciative audiences.

The Players have a stall at this year's Summer Fair on 25th June. We'll be doing Guess the Pantos: ten photos, ten Panto names, match correct photo to name, easy! 50p a go, first correct entry drawn out the hat will win two tickets for this year's Panto. We will also be raffling some cute soft toys in aid of charity, so please come and see us we're very friendly and love meeting people.

The Players A.G.M is on Wednesday 29th June at 7.45pm everybody is welcome, members and non members.

The 2011 Pantomime: we still have a possible script and a director for this years Pantomime. The read through of this possible script will be on Wednesday 6th July, and if all goes well the auditions will take place on Wednesday 13th July. Hopefully I will have more information for you in July's Messenger

Pianist Still Wanted: If you play piano and you're reading this thinking "I wouldn't mind playing piano for the Players, contact me (Karen) or come to the hall on a Wednesday evening.

The Players meet every Wednesday evening at 7.30pm in the Village Hall. Membership is very reasonable: Senior's £5 & Junior's £2 per year. We welcome anyone from the age of 9 years to 90+ to indulge in acting, singing, directing, choreographing, sound, lighting, set building, scenery painting, front of house, backstage, stage managing, make up, costumes, etc.

If you are interested in any of the above we look forward to meeting you.

Karen Mitchell

01462 816336



Meppershall Pre-school Ponderings



This month we are saying goodbye and best wishes to Ben, who is moving to a new village, and hello and welcome to Ethan.

The children have been having great fun making cards and cooking. They have also been sawing wood and banging in nails with real tools! Our theme for next term is 'The World and the Planets', looking at the hot and cold countries of the world, tasting foods from those countries and making rockets. We will also be holding a Mini Olympics!

Finally we would like to say a big Thank You to those who attended our Ladies Pamper Evening at the village hall in March. We raised approximately £350 which is fantastic!

Meppershall Pre-school is situated in the village hall. Children can attend from the age of 2 years 6 months.

Session times (term time only):

Monday to Friday	9.30 am – 12.00 pm
Monday to Friday Lunch club	12.00 pm – 12.30 pm
Monday, Wednesday and Friday	12.30 pm – 3.00 pm

If you are interested and would like to arrange a visit please contact us on (01462) 817359 during session times or e-mail info@meppershall-ps.co.uk, alternatively you will find more information and our prospectus on our website www.meppershall-ps.co.uk.

Meppershall Garden Club

In April the MGC visited the Swiss Garden at Old Warden. This was followed by afternoon tea.

May was a busy month as we had our 'Open Gardens' for members and, by the time you read this, we will have had our 'Gardeners Question Time' with Keith Hichisson from Langford Garden Centre. I do hope that many of you attended and enjoyed this event. Thank you again to Keith and his team for a very special evening.

Just before I go I would like to remind you of our competitions coming up at the Summer Fair. Looking forward to seeing you at the Summer Fair – lets hope for weather like last year!

Meppershall Garden Club Summer Fair 2011 Competition Entry Form		
	Tick	Fee £1.00 per Entry
Children's: Make a Vegetable Animal. (animals, birds, insects etc. all acceptable)		
Adults: Flower Arrangement on the theme of 'Afternoon Tea'. An all round interpretive design.		
	Total Fee	£
Name:	Age* (children)	
Address:	Contact 'Phone no:	
Parent/Guardian Signature*:		
Please return all entry forms to Meppershall Village Stores with your entry fee. Additional copies of this form can be photocopied, collected from the above store, or downloaded from the Village Hall website (under events).		

SIGNIFICANT BIRTHDAYS IN JUNE

4 th June	Kathleen Foster	86
11 th June	Peggy Parsons	90
28 th June	Joan Wood	81

ooOoo

In Memoriam

Minnie Rose Tink, who died 17th April, aged 92.

Minnie was one of the nonagenarians whom we featured in our Souvenir issue last year. In that piece we said:

Minnie was born 15th August 1918 at 43, Cumberland Street, next to Pentonville Prison in east London. Her father was a navy, working on the London roads.



On 5th September 1936 Minnie married the boy next door, Charlie Tink, at St James Church, Islington. She was 18 and Charlie was 23 and their home was in Lulot St. They moved to Meppershall when Charlie worked at RAF Henlow as an aircraft fitter.

Minnie ran the Evergreens with Charlie for many years and also served on the Parish Council.

They have 2 sons, 4 grandchildren and 4 great-grandchildren!

NOTICE BOARD

Foresters Friendly Society - Coming Events

Saturday 16th July – Village Hall Social Nite. 8.00- Midnight
Music by Chris Cole and The Rockets. Tickets £5.00, including
buffet.

Saturday 22nd October - Village Hall Social Nite. 8.00-
Midnight
Music by Denni Harris. Tickets £5.00 including buffet.

Motor Cycles

If any motorcycle enthusiast would like to display their
machines, be they vintage, classic or new, at the
Meppershall Summer Fair on 25th June, please contact:

Wayne Allen

E-mail: goose1100@yahoo.co.uk

or

mobile 07837 485430

COVERS BY REQUEST

John Chapman took this month's cover picture of the MG cavalcade through the village in tribute to the passing of Eddie Holden. He also took the picture on page 9 of the gathering of friends and relatives outside Eddie's house following the funeral. We understand that the video which John made of the whole cavalcade will be posted on the Village Archive website. Thank you John.

If you would like to see a specific picture on our cover, please get in touch in time for us to arrange with one of our in-house "paparazzi" to do the business.
Ed.

A New Season at Langford Tennis Club

Langford Tennis Club is keen to welcome new members from all surrounding villages to join us to play fun or competitive tennis. We offer both junior and adult coaching for all levels and have an ex-professional player, Justin Layne, as coach. Justin lives in the village and was recently a top ten player in the country; he now runs a professional tennis programme for the LTA - we are lucky to have a coach with his experience. As well as coaching there are Wednesday evening and Saturday club afternoons for adults and we run several men's, women's and mixed teams in local leagues. If you are interested in joining please come down to a club evening/afternoon at the Playing Field in the middle of Langford village to meet us or contact:

- Membership enquiries – Julie Larman 01462 701289
- Coaching & tennis development – Paul Metcalfe 01462 700991.
pauln.metcalfe@ntlworld.com



Meppershall Pre-school Ponderings



Meppershall Pre-school is situated in the village hall and children can attend from the age of 2 years 6 months.

Session times (term time only):

Monday to Friday	9.30 am – 12.00 pm
Monday to Friday Lunch club	12.00 pm – 12.30 pm
Monday, Wednesday and Friday	12.30 pm – 3.00 pm

If you are interested and would like to arrange a visit please contact us on (01462) 817359 during session times or e-mail info@meppershall-ps.co.uk, alternatively you will find more information and our prospectus on our website www.meppershall-ps.co.uk.

**ST. FRANCIS OF ASSISI
CATHOLIC CHURCH
HIGH STREET SHEFFORD**

SATURDAY MASS	6pm RAF HENLOW
SUNDAY MASSES	9am & 5.15pm AT SHEFFORD

For weekday services and confessions please see notices in the church or telephone:

Parish Priest Canon Noonan on 813436 or

Parish Secretary Rose Boulton on 811547 or email

rosedene@talktalk.net

ST MARY THE VIRGIN

MEPPERSHALL PARISH CHURCH (CHURCH OF ENGLAND) Church Rd, off Campton Rd

Rector: (Meppershall & Shefford) Rev John Harper, The Rectory,
Church Rd, Meppershall revjohnharper@talktalk.net

01462 813334 (usual day off – Monday)

Lay Reader: Pam Halliwell (usual day off – Friday) 01462 817069

Churchwardens: Brian Bellamy 01462 815944 (Pastoral Assistant);

Brenda Wright 01462 816446

Services for June

Date	Time	Service
Sun 5 th After Ascension	11.00 am	Parish Communion & Junior Church at Rectory
Sun 12 th Whit Sunday	8.30 am	Holy Communion
Sun 19 th Trinity Sunday	8.30 am 11.00 am	Holy Communion Family (All age) Service led by Meppershall School with baptism of William Mayes
Sunday 26 th Trinity 1	11.00 am	Family Communion & Junior Church

St Mary's Weekday Services:

Wednesdays : 10a.m. Holy Communion (B.C.P.)

Fridays : 7.30p.m. Compline (Evening Prayer)

Saturdays 9.30a.m. Morning Prayer

Also this month...

You will be welcome to join a group from Meppershall and Shefford at

The Alban Pilgrimage
 Saturday June 18 at St Alban's Abbey
 Pilgrimage Procession (with mega sized puppets)
 10.30a.m. Festival Eucharist 11.30a.m.
 Festival Evensong 4p.m.

Full afternoon programme (all age) of activities
 Come for all or part of the day - travel by shared cars - See
www.stabanscathedral.org or ring 813334 for details.
 Sign up on notice in Church

Saturday June 25 - Meppershall Village Fair -

St Mary's will be pleased to see you at the Tea Tent, where home made goodies will be in plenty, and where you can also meet up with the 'Friends of St Mary's'.

St Mary's Village Choir will also be providing some of the afternoon's entertainment

And at Shefford.....

Sunday June 12 – Shefford Gala at Robert Bloomfield School grounds from 2p.m.

The four town churches will be involved in the Parade and in other ways that reflect the Whitsunday story. Do come and say hello.

Thursday June 23 - 7.30p.m. 'A Midsummer Meander' – a reflective stroll around the town with opportunities to appreciate the diversity of God's creation . Meet at St Michael's. Details from Jenny Dann – 01462 817337

The next United Service of Prayer for Healing and Wholeness will be at St Francis' Catholic Church, High St, Tuesday July 5, 7.30p.m.

A letter from Pam Halliwell.

June! The gardens are beautiful and we have the Art and Music Festival and the Village Fair to look forward to, to say nothing of the Litter clear up. Those all important exams will soon be over and can be forgotten for now and hopefully we will have a great summer, weather-wise. By the time you read this I shall have had the wonderful luxury of two week's holiday and will be full of energy and with lots of happy memories to look back on. So why, you may ask, is there an air of slight despondency up at St Mary's? Well for some 7 years we have been blessed with a well loved and enormously hard working Rector who, with Sandra, has led us into new initiatives and adventures and we are going to miss them. Of course we rejoice that they will be able to take life more easily in retirement and see more of the family, but the congregation know that there will be a lot to do if we are to continue to grow, so I hope the Village will support us and challenge us to continue to grow. There will be other opportunities later to express our appreciation to John and Sandra. Meanwhile we are preparing to rise to the challenge

This reminded me of Pentecost, or if you prefer it, Whitsun, which we shall be celebrating this month. Christ having risen from the dead and shown Himself alive to many people, had left his followers and returned to His Father, but not before He had promised to send them His Holy Spirit who would dwell within them and be their constant companion, inspiration and guide. When the Holy Spirit came at Pentecost the disciples were transformed from an anxious and grieving group into a growing Church which opposition and persecution could not destroy. The young Christian Church grew and spread and is still growing to-day. So we at St Mary's will not be despondent for long but will expect the help we have been promised and have experienced in the past and I believe we shall be amazed at what God has in store for us!



JONAH MAN JAZZ

MEPPERSHALL SPARKS 2011

The Sparkling Christian Holiday Club!

- | | |
|--------------|--|
| When | - 25 th - 28 th July 2011. |
| Time | - 10am – 2pm |
| Where | - St Marys' Church, Rectory & Field. |
| Who | - children 5 – 12 years. |
| Cost | - £2-50 a day. |
| Wear | - old clothes. |
| Food | - bring your packed lunch. |

Info. Sandra 01462 813925, sandray.harper@yahoo.co.uk

**Registration forms from - St Marys' Church, The Rectory, and
St. Michaels' Church and through local schools.**

OATY RAISIN COOKIES

JUNE 2011

MAKES 36

175g/6oz butter, plus extra for greasing

175g/6oz plain flour

1 tsp baking powder

175g/6oz soft light brown sugar

1 tsp vanilla essence

2 eggs, beaten

175g/6oz porridge oats

100g/3 1/2 oz raisins

METHOD

- 1) Preheat the oven to 180oC/350oF/Gas 4. Grease 3 non-stick baking sheets.
- 2) Sift the flour and baking powder together. In a large bowl, beat the butter and sugar until the mixture is light and fluffy.
- 3) Add the vanilla essence to the butter mixture. Beat in the eggs until the mixture is smooth.
- 4) Using a wooden spoon gradually beat in the flour until thoroughly combined. Add the oats and raisins and beat until blended.
- 5) Drop rounded spoonfuls of dough onto the baking sheets, leaving plenty of space between them.
- 6) Use a fork to flatten the cookies slightly. Bake for 12 minutes or until crisp and golden.
- 7) Allow the cookies to cool slightly and harden on the baking sheets before transferring them to a wire rack.
- 8) Serve warm or cold.

Recipes are kindly supplied each month by Brenda Putwain

GARDEN TIPS FOR JUNE

(With acknowledgements to the RHS)

- Keep weeding and deadheading to maintain beds, borders and container displays.
- Water new and young plants as necessary.
- Look out for pests and suckers on roses.
- Prune spring-flowering shrubs.
- Propagate climbers by layering.
- Cut back and tidy up spring flowering perennials.
- Take cuttings from pinks.
- Sow seed for perennials.
- Cut down faded foliage of bulbs; lift and divide overgrown clumps.
- Plant out summer bedding in borders and containers, including hanging baskets.
- Sow plants for winter and spring colour, such as polyanthus and pansies.
- Introduce new fish into the pond.
- Remove blanket weed and duck weed to prevent them clogging up features.
- Mow the lawn and trim edges regularly.
- Give tired lawns a boost with a liquid feed.
- Water new lawns made in the spring.
- Harvest vegetables as they mature.
- Plant winter brassicas and protect them from pets.
- Keep fruit and vegetables well watered during dry spells.
- Shade and ventilate plants in the greenhouse.

LAST CHANCE

- Plant new plants before the summer heats up.
- Sow hardy annuals outside to flower this year.
- Plant out tender vegetables such as tomatoes and runner beans to get good crops this year.

GET AHEAD

- Sow chicory to force in winter for salads.
- Peg down strawberry runners to make new plants.
- Sow seed for pot plants to flower in winter.

•

*A very Happy Birthday to those of you
celebrating birthdays in June*

*Chloe Marshall who will be 11 on the 1st
Vinnie Simpkins who will be 6 on the 1st
Yasmine Vara who will be 12 on the 3rd
Abbie Bradshaw who will be 8 on the 3rd
Niamh Fairweather who will be 9 on the 3rd
Francesca Gavin who will be 14 on the 4th
Abigail Lougher who will be 9 on the 4th
Aliyah Vara who will be 10 on the 5th
Hannah Stock who will be 14 on the 5th
Lewis Savuto who will be 9 on the 10th
Alison Watson who will be 7 on the 14th
Maya Cox who will be 11 on the 15th
Louis Fairy who will be 10 on the 22nd
Adelle Gainsford who will be 14 on the 22nd
Liberty Simpkins who will be 10 on the 22nd
Tayla Woodcock who will be 5 on the 25th
Monica Steeley who will be 8 on the 26th
Naomi Crowson who will be 13 on the 27th
William Lambley who will be 5 on the 28th
Maya Derrick who will be 12 on the 28th*

Finn Rose who will be 6 on the 30th

*If you are under 16 and would like your name added to
the birthday page, please call Louise Hutson on 814748
or email at louhuts@btconnect.com*

THE MEPPERSHALL MESSENGER

CONTRIBUTIONS

The editor welcomes contributions to the Messenger, whether as letters, articles or notices. Contributions should preferably be as attachments to e-mail but hand written contributions may be sent by post, left at the Editor's address below or in the folder kept at the Village Stores. Contributions should run to not more than one A5 page (except by prior arrangement) and should be received by the Editor not later than the 12th of the month for publication at the end of that month. Contributions received after the deadline may be held over.

DISCLAIMER

The Editor reserves the right to omit or alter any advertisement or article and to change the content, format or issue date of the magazine without prior notice. The Editor cannot be held responsible for the factual correctness of, or for any libellous comment or statement made in any advertisement, article or other contribution published in this magazine. Every effort will be made to avoid any deliberate attempt to mislead or otherwise cause harm or damage to any person or persons by any advertisement, article or any other contribution published in this magazine.

THE TEAM

Editor	Dick Bulley	116 Shefford Road	815114
		E-mail: richard.bulley@btinternet.com	
Youth Editor	Brigid Holmes		
Advertising	Christine Elbourne	5 St. Mary's Place	817409
Manager		Email: mail@elbourne.co.uk	
Distribution	Colette House	90 Fildyke Road	815585
Manager		Email: colettehouse@gmail.com	
Treasurer	John Thompson	16 Brookmead	812983
		Email: jthompson244@btinternet.com	

Collating Dates for your diaries

2011

June	27	
July	25	Double
August	No	
September	26	
October	31	
November	28	Double

2012

December	No
Jan 2012	30
February	27
March	26
April	23