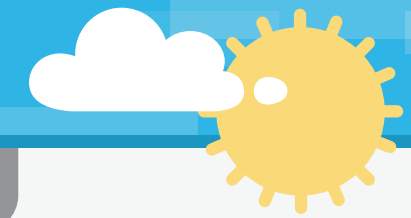


# CORPORATE CITIZENSHIP



## OUTCOMES

## GOALS

## CURRENT ACTIONS



Strengthen the bond between our staff and our community

**1** Identify opportunities to give back to our local community

▶ Launch Volunteer time-matching: employees submit proposals for disadvantaged, people centric charitable activities. 1 employee hour:1 Monodraught hour

▶ Partnered local charity Buckinghamshire Mind

**2** Make our staff proud to work for us

▶ Ad-hoc employee events to encourage both well being and team building

▶ Achieve Investors In People status and all employees to be paid a minimum of the Living Wage



Celebrate an innovation and learning ethos

**1** Inspire future young professionals

▶ Collaborate with Engineering departments at universities for R&D

▶ Employ 2-3 summer placement students

**2** Intensify culture of innovation

▶ Celebrate R&D Innovation

▶ Innovation encouraged in Marketing department to think of creative ways to tell the Monodraught story. Most recently through use of business cards with augmented reality to demonstrate the main product lines



Live by our green building principles

**1** Invest in sustainable products and services

▶ Understand our main indirect & direct energy impacts

▶ Become a member of the Supply Chain sustainability School

**2** Reduce carbon emissions

▶ Promote participation in Earth Hour for staff at home and at work

▶ Our products help customers deliver their own sustainability ambitions to cut carbon emissions



Grow the business through sustainable means

**1** Keep suppliers close

▶ More than 85% of our suppliers come from within 100 mile radius

▶ Close proximity to suppliers increases confidence in how materials are produced and allows us to be more flexible and responsive in our approach

**2** Be "green" throughout the supply chain

▶ Aim to re-use our packaging at least 3 times

▶ Conform to ISO9001 and ISO14001

**3** Champion the highest ethical standards

▶ Apply sustainable procurement strategy to our top 3 suppliers and demonstrate commitment to the environment and community

