



Monodraught are the recognised market leaders in ultra-low carbon, low energy solutions for Natural Ventilation, Natural Cooling and Natural Lighting.

WINDCATCHER®, **SUNPIPE®** and **COOL-PHASE®** brands are synonymous with quality and innovation (ISO9001 & 14001) and are supported by our market leading design service.

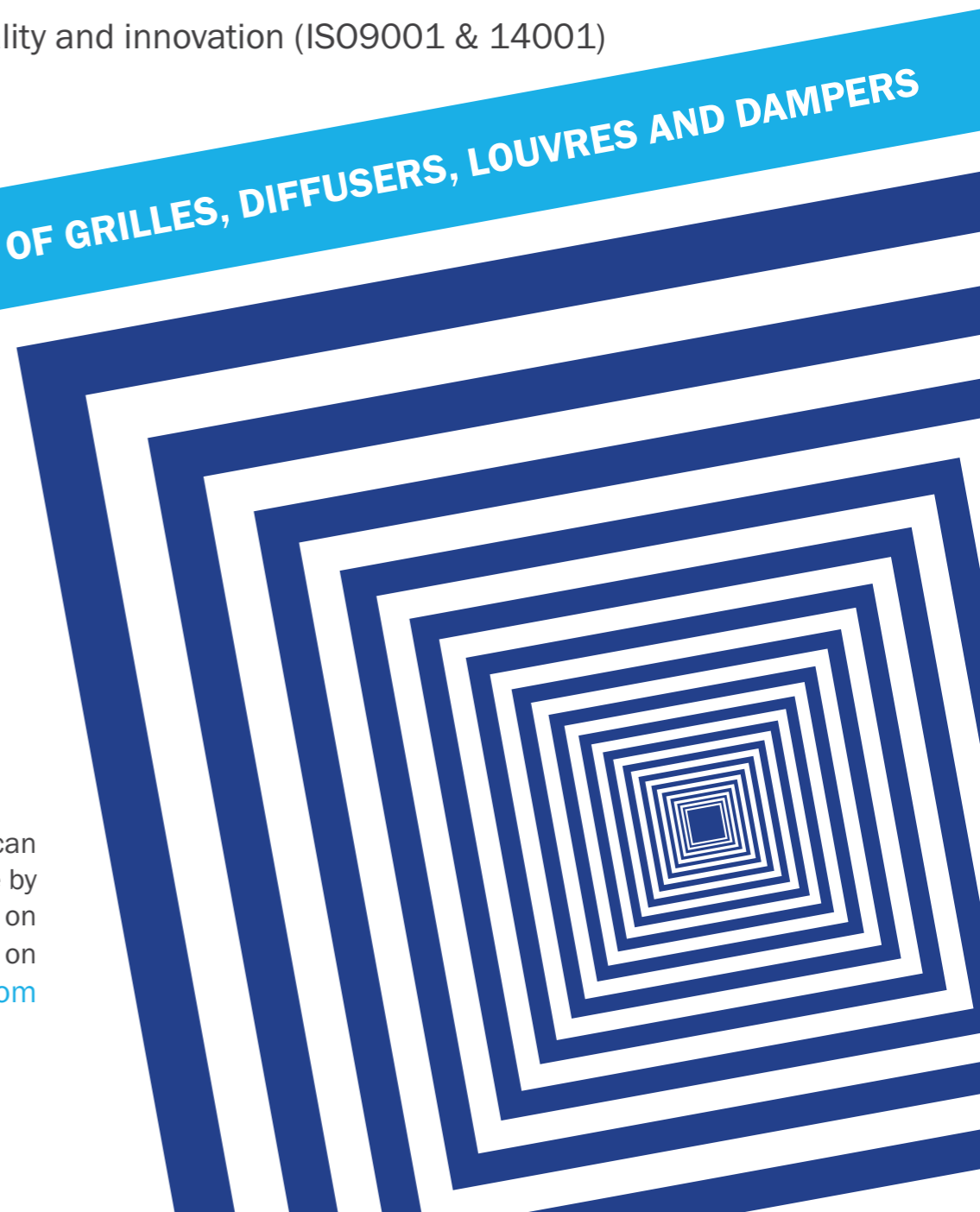
Air-Precision is an addition to Monodraught's portfolio including grilles, diffusers, external louvres and volume control dampers.

PRODUCT RANGE OF GRILLES, DIFFUSERS, LOUVRES AND DAMPERS

We are supporting this range with:

- £1 million of fast moving stock
- Bespoke manufacture with any standard RAL colour within 5 days
- 15 dedicated selection experts
- Designed with industry leading software
- Belimo actuators used throughout
- AA5 anodisation (ISO7599) utilised
- Market leading quality fully supported by a **10 year guarantee**

We are confident that we can beat any quotation you have by 10% so please contact us on **01494897700** or email us on air-precision@monodraught.com



Floor Swirl Diffusers - FSW

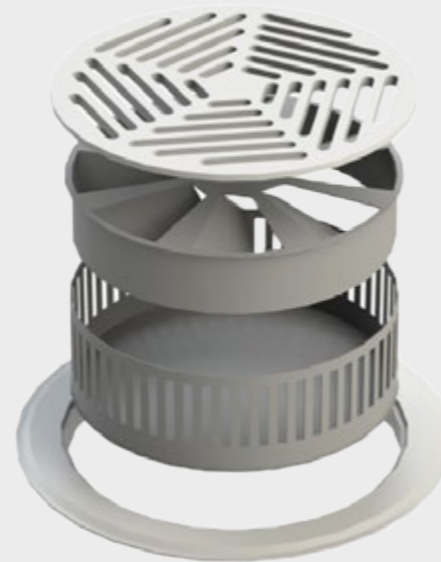


Floor swirl diffusers are specially reinforced units, providing an effective method of supplying air to areas like open plan offices.

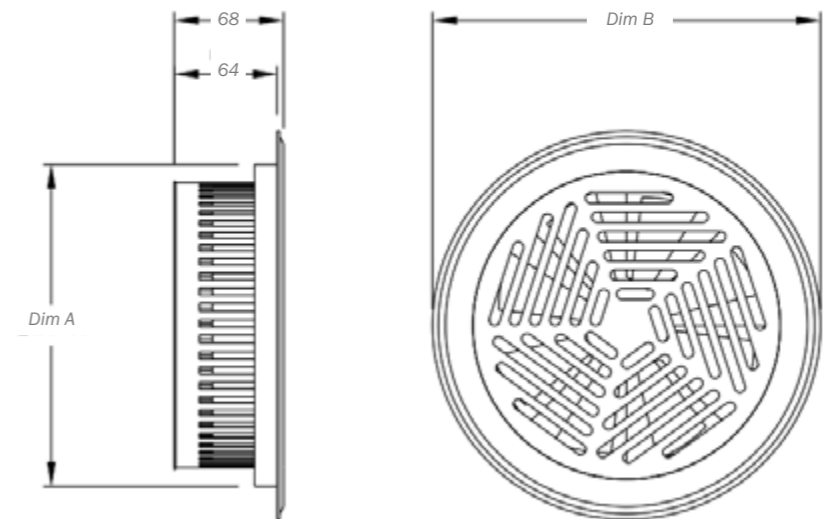
Suitable for any sort of raised flooring and available in 150 mm and 200 mm diameter models.

Constructed from four main components:

- Outer Ring:**
 Manufactured from cast aluminium, the outer ring is the main support for the rest of the unit. It also holds the three clips which secure the unit into the floor.
- Inner Core:**
 Also from cast aluminium, this perforated 6.4 mm thick section is strong enough to support light foot traffic. Fully removable from the outer ring and fitted with a captive bolt from which the deflector set and dirt catchment tray are mounted.
- Swirl Deflector Set:**
 Polyester powder coated matt black, this is screwed onto the captive bolt on the underside of the inner core and provides the swirling throw required for good mixing of supplied and resident air.
- Dirt Catchment Tray:**
 Hung underneath the swirl set, the dirt catchment tray is designed to catch any dirt or debris which may fall through the inner core, ensuring floor voids are kept clean and making maintenance easier.



Technical Drawings:



SIZES	Dim A (mm)	Dim B (mm)
FSW150	150	190
FSW200	200	240

Materials:

- Cast aluminium fascia plate and outer ring
- Galvanised steel dirt collection pan and swirl blade set (power coated matt black)

Core:

- Removable to allow cleaning and fitting

Mass / Unit:

- Approx 1 kg

Sizes:

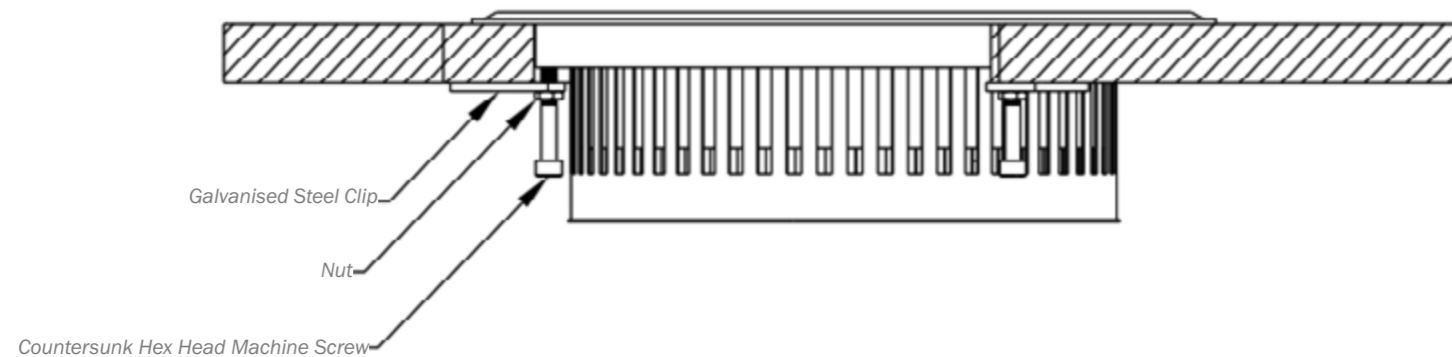
- 150 mm and 200 mm diameter

Floor Swirl Diffusers - FSW

Fitting:

Fitting is quick and simple:


- Fit the three steel clips into position using the tapped holes in the underside of the outer ring and the nuts and machine screws.
- Turn the clips to face inside the outer ring and then lay it into a pre-cut hole in the floor.
- Turn the steel clips 180 degrees so they protrude from the outer ring to sit underneath the floor tile.
- Adjust the machine screw and nut to secure the outer ring to the floor.
- Lay in the assembled inner core, swirl set and dirt tray.





Finish:


- Standard: Cast aluminium
- RAL: Polyester powder coated to RAL
- BS: Polyester powder coated to BS



 Halifax House, High Wycombe
Buckinghamshire, HP12 3SE


 +44 01494 897700

 +44 01494 532465

 www.monodraught.com

 info@monodraught.com

 Monodraught Ltd

 @MonodraughtLtd

 Monodraught Ltd

 **Monodraught**[®]
engineering delivered. naturally

