



Monodraught are the recognised market leaders in ultra-low carbon, low energy solutions for Natural Ventilation, Natural Cooling and Natural Lighting.

WINDCATCHER®, **SUNPIPE®** and **COOL-PHASE®** brands are synonymous with quality and innovation (ISO9001 & 14001) and are supported by our market leading design service.

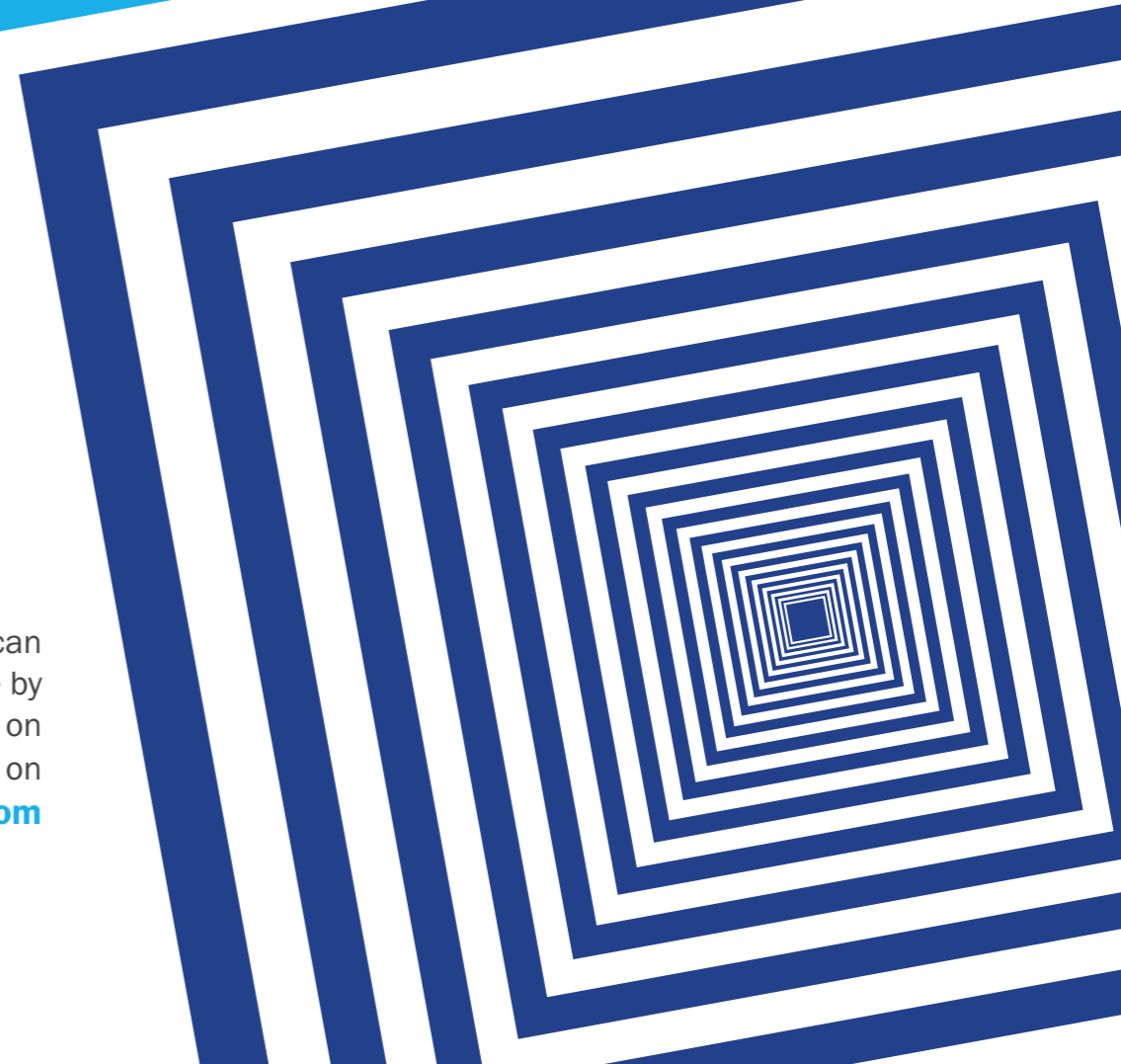
Air-Precision is an addition to Monodraught's portfolio including grilles, diffusers, external louvres and volume control dampers.

PRODUCT RANGE OF GRILLES, DIFFUSERS, LOUVRES AND DAMPERS

We are supporting this range with:

- £1 million of fast moving stock
- Bespoke manufacture with any standard RAL colour within 5 days
- 15 dedicated selection experts
- Designed with industry leading software
- Belimo actuators used throughout
- AA5 anodisation (ISO7599) utilised
- Market leading quality fully supported by a **10 year guarantee**

We are confident that we can beat any quotation you have by 10% so please contact us on **01494897700** or email us on **air-precision@monodraught.com**



Stainless Steel Weather Louvre - WLSS



Manufactured for use in areas demanding the aesthetics given by stainless steel or for where corrosion resistance is essential.

Series WLSS weather louvres are manufactured using the latest CNC press brake technology, ensuring perfectly crisp bend lines in both the frame and blades.

Manufactured with a single bank of blades, stainless steel louvres present very little resistance to airflow, whilst ensuring rain ingress is kept to a minimum.

Materials:

- Stainless steel in grades 430, 304 and 316 (marine spec)

Blade:

- 47 mm pitch with approximately 40° face slope

Core:

- Fixed

Frame:

- Flanged: 30F (30 mm flat flange) and 50F (50 mm flat flange)

Debris Screen:

- BS: Bird Screen (12 mm x 12 mm mesh)
- IS: Insect Screen

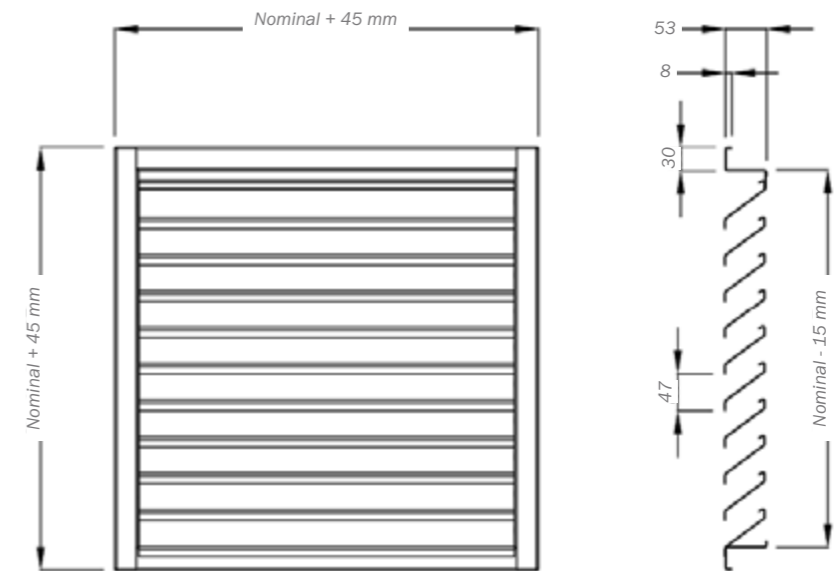
Mass/m² face area:

- 20 kg

Free Area:

- Approx 55% (varies with size)

Technical Drawings:



Frame Types:

The table below shows the standard and optional frames available for WLSS louvres, along with ordering codes and dimensions.

These are only standard frame types. If you have a special requirement not shown here, please contact us.

FRAME CODE	DESCRIPTION	STANDARD OR OPTIONAL	NOMINAL TO OVERALL SIZE	OVERALL DEPTH
30F	30 mm flat	Standard	+ 45 mm	53 mm
50F	50 mm flat	Optional	+ 85 mm	53 mm

Stainless Steel Weather Louvre - WLSS

Please note: Images show fixing methods on Series WL standard louvres, the fixings supplied with Series WLSS louvres may vary slightly from that shown.

Fixings:

- **None (standard):**

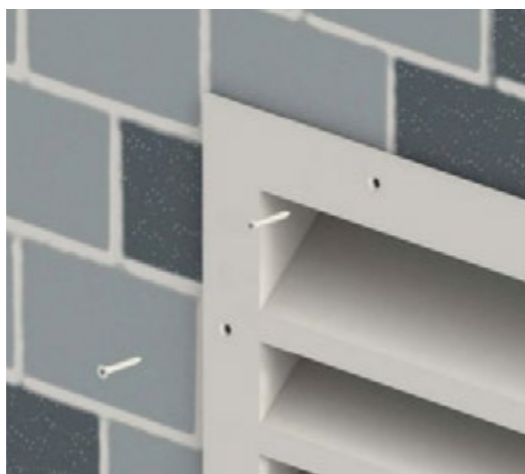
Most weather louvres are supplied with no fixings. In this instance we recommend drilling through either the louvre flange or the neck and screwing directly into the supporting structure with an appropriate fixing.



- **Predrilled Face Fixing Holes - FH:**

5 mm fixing holes will be drilled into the louvre frame allowing quick and easy fitting on site.

Number and layout of fixing holes will be appropriate to louvre size. Arrangements can be specified.



- **Glazing Bar - GZ (required depth needed):**

An additional frame can be fixed to the louvre neck to create a glazing bar frame suitable for installation into uPVC channels in place of glass window panes.

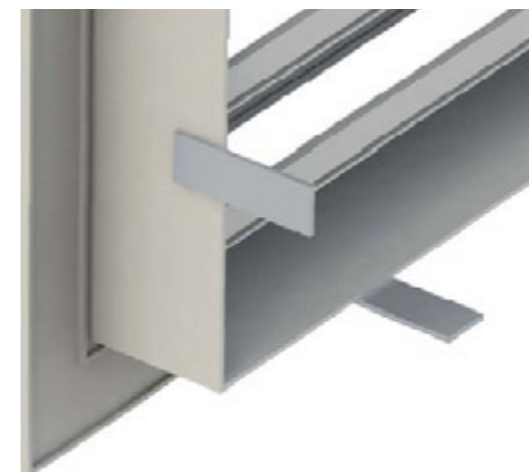


- **Rear Mounted Concealed Fixing Lugs - FL:**

25 mm wide lugs, protruding 50 mm from the back of the louvre neck can be factory fitted to your louvre.

Lugs are supplied undrilled to accept whatever fixing is required on site and are either welded or double riveted to the louvre.

An appropriate amount of lugs will be fitted to suit the louvre size.



Stainless Steel Weather Louvre - WLSS

Technical Notes:

Stop Gaps:

Louvre blades are laid out starting with the bottom blade and then working upwards.

Should a whole number of blades not be possible to fit into the required height, the top-most blade will either be cut down or a stop gap will be fitted.

The maximum heights of stop gaps is approximately 25 mm.

Stop gaps are visible only as flat stainless steel sections.

Welds:

In some areas of the louvre minor discolouration may be visible due to welds.

Large Units:

Large louvres may need to be produced in sections. The number of sections can be stated in your ordering code, or will be decided by Monodraught and stated on your order acknowledgment.

Side-by-Side Sections:

Non continuous appearance. Blades will be edged with a flat profile to be butted up to its adjacent profile.

Vertically Stacked Sections:


Units will be manufactured in sections of equal height, to be stacked together upon installation.


Joining strips can be supplied if required to ensure alignment.


Finish:


- Bare metal only



 Halifax House, High Wycombe
Buckinghamshire, HP12 3SE


 +44 01494 897700

 +44 01494 532465

 www.monodraught.com

 info@monodraught.com

 Monodraught Ltd

 @MonodraughtLtd

 Monodraught Ltd

 **Monodraught**[®]
engineering delivered. naturally

