



An Roinn Sláinte
Department of Health

SláinteCare.

Right Care. Right Place. Right Time.



Sláintecare Implementation Plan

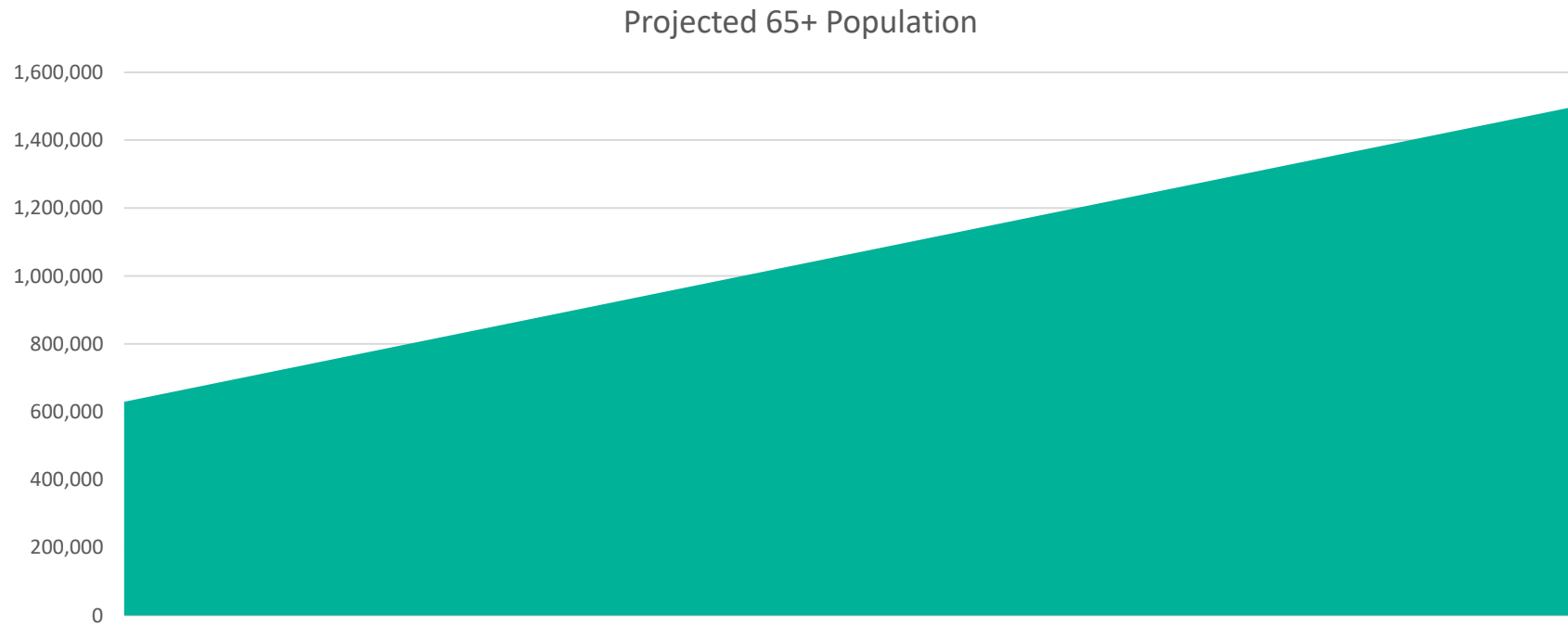
**Laura Magahy, Executive Director
Sláintecare Programme Implementation Office**

NOCA Annual Conference 2019 'Connected Healthcare'

Over the next ten years our population will change radically and our health service must change with it.

Growing from 4.6 million people
to
5.2 million people...

...including a rapidly rising 65+ population.



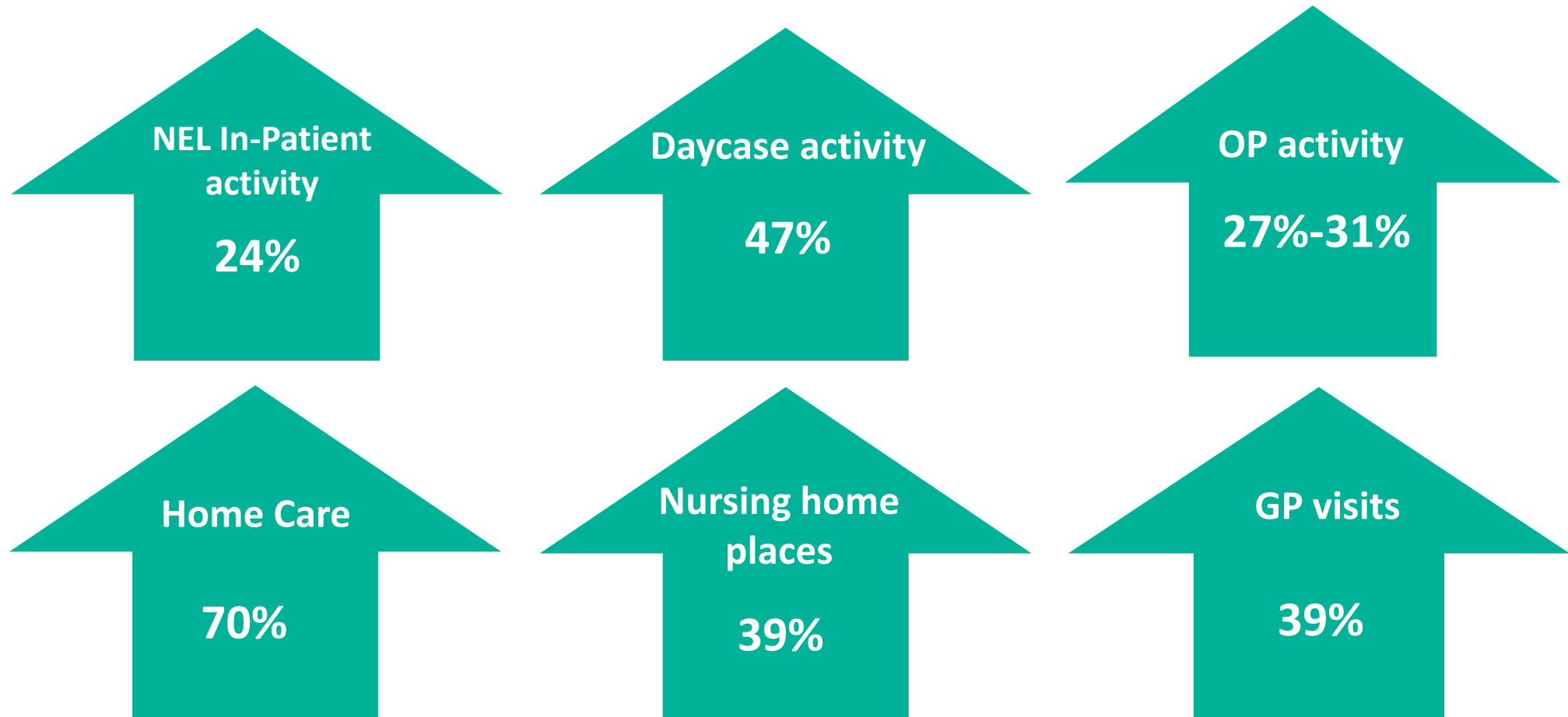
This means that health needs are changing...

**+
Co-
morbidity**

**+
Life
Expectancy**

**+
Chronic
Disease**

...with demand set to increase across our services.



* Figures from Health Service Capacity Review

Sláintecare has been designed to create a modern, responsive health and social care service which meets the changing needs of Ireland's population.

Sláintecare Objectives:



Over the next 10 years, **together** we will...

- Promote the health of our population to prevent illness
- Bring the majority of care into the community
- Create an **integrated** system of care, with healthcare professionals working closely together
- Create a system where care is provided on the basis of need, not ability to pay
- Move our system from long waiting times to a timely service
- Drive accountability and performance in the health service
- Deliver a health service that has the capacity and ability to plan for, and manage, changing needs

The goal is to enable the...



Clinical Audit is vital for underpinning service improvements, policy and planning, and to inform our future health service delivery.



Source: HSE Quality and Patient Safety Directorate

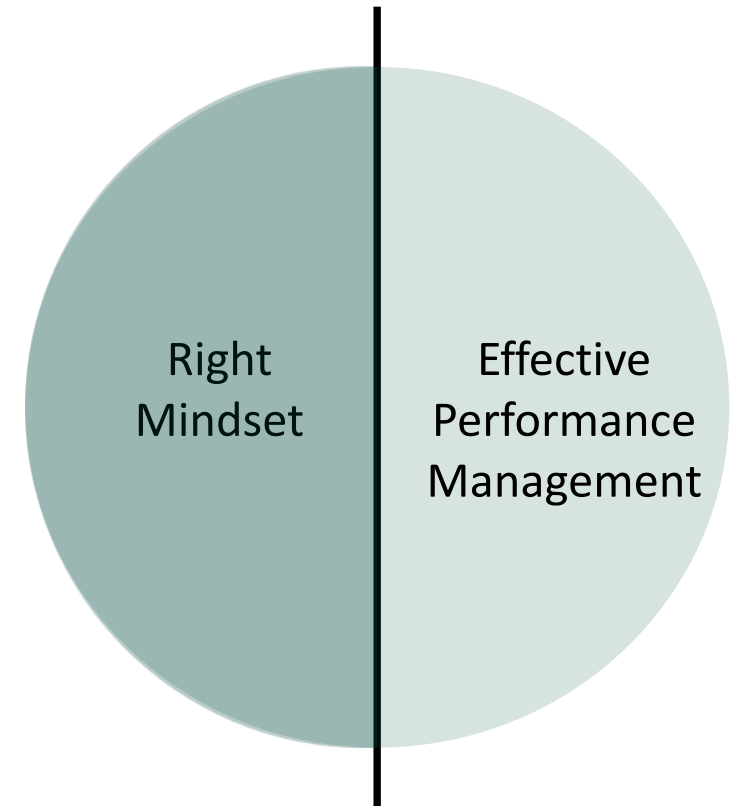
How Sláintecare will be delivered...

Transformation will depend on

The Right Mindset

- Guiding coalition
- Shared vision
- Ambition
- Clear priorities
- Urgency
- Capacity to learn rapidly
- Collaboration

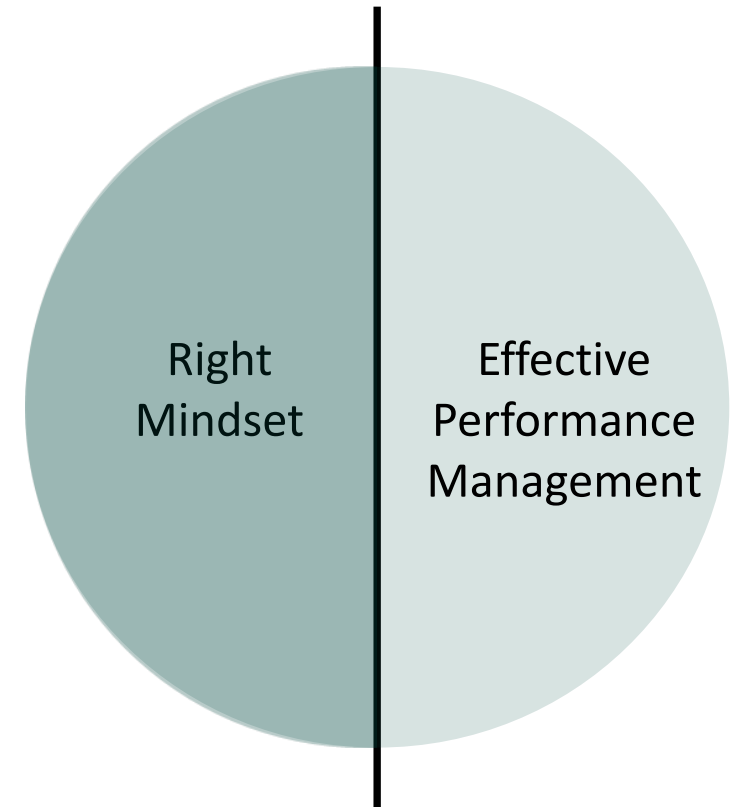
Two sides of the same coin



... And Effective Performance Management

- Good real-time data
- Targets
- Best practice transfer
- Transparency
- Management against trajectory
- Capacity to intervene where necessary
- Methods of recognising success

Two sides of the same coin

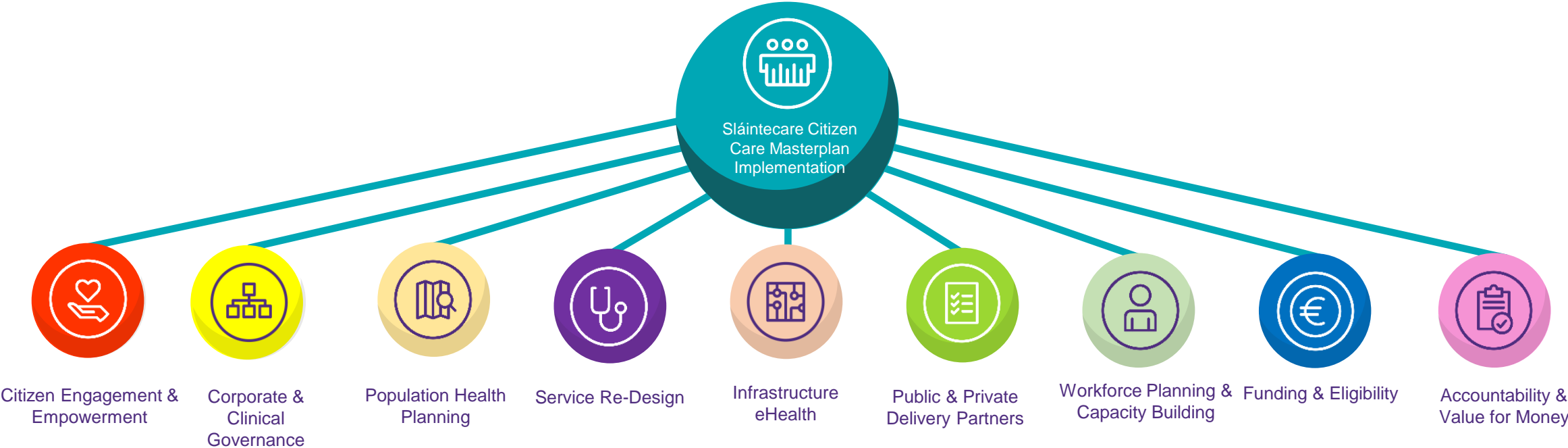


Approach of Programme Implementation Office:

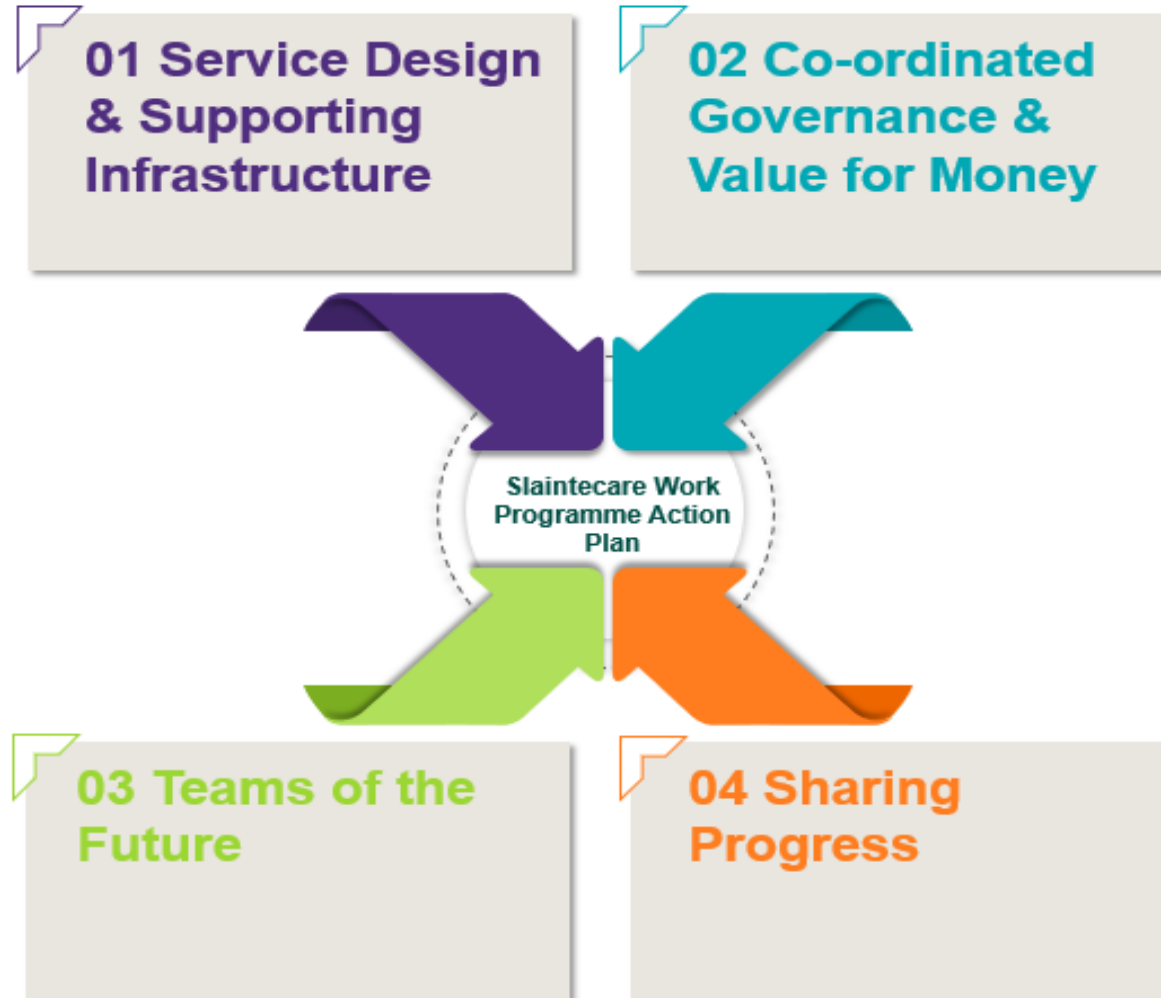
- To establish the programme of reform
- To develop a strategic and programmatic approach to implementation
- To ensure all parts of the system are following the strategy
- To work collaboratively with stakeholders
- To support work of colleagues and reform efforts
- To report on progress

- **Not** to duplicate effort

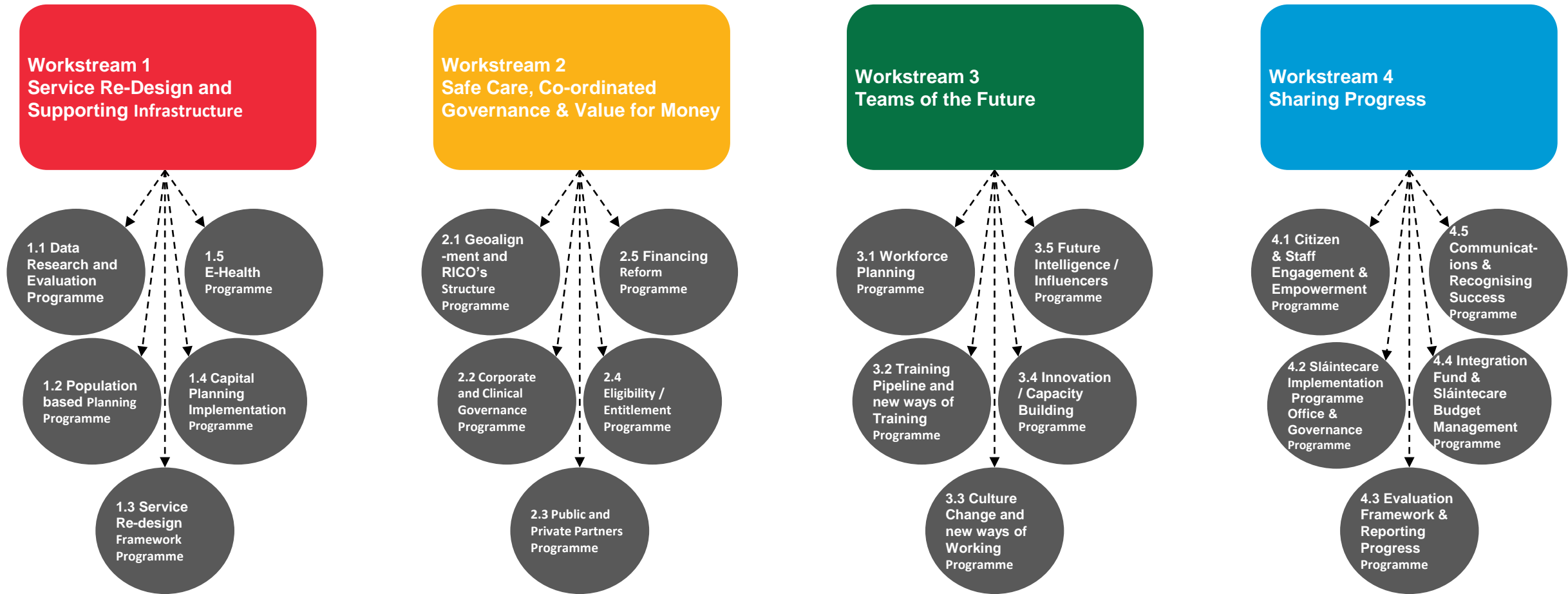
A whole-system framework:



Four workstreams...



...with detailed work programmes under each:



2019 priorities for Workstream 1

Workstream 1 Service Re-Design and Supporting Infrastructure

Providing the right care, in the right place, at the right time, where the patient / service user is paramount and there is a strong emphasis on prevention and public health.

In 2019, we will:

- Develop a national framework for models of care design.
- Roll out Healthy Ireland programme, with a focus on prevention
- Improve management of chronic disease and older people's services in the right location
- Commence planning for an additional 2,600 acute beds and 13,000 community beds
- Prototype a Citizen Health Portal, continue EHR roll-out and explore scale up of telehealth solutions.

2019 priorities for Workstream 2

Workstream 2 Safe Care, Co-ordinated Governance & Value for Money

Enable a safe, devolved and accountable system to support the delivery of Irish health and social care services.

In 2019, we will:

- Model various scenarios to develop a roadmap and policy proposals towards universal entitlement
- Consider recommendations from the de Buitléir report, examining the removal of private practice from public acute hospitals
- Agree a new organisational and operational structure for the future reconfigured health service including the Department of Health, HSE and Regional Integrated Care Organisations
- Pilot 9 Community Health Networks across the country
- Conclude agreement on the GP Contract

2019 priorities for Workstream 3

Workstream 3 Teams of the Future

Plan, build and support a healthcare workforce which can deliver on the Sláintecare reform programme.

In 2019, we will:

- Implement the workforce planning framework with a focus on engagement with education sector and training bodies to agree new ways of training multidisciplinary teams
- Support staff to work to the full scope of their licence to ensure that patients are seen at the lowest level of complexity possible

2019 priorities for Workstream 4

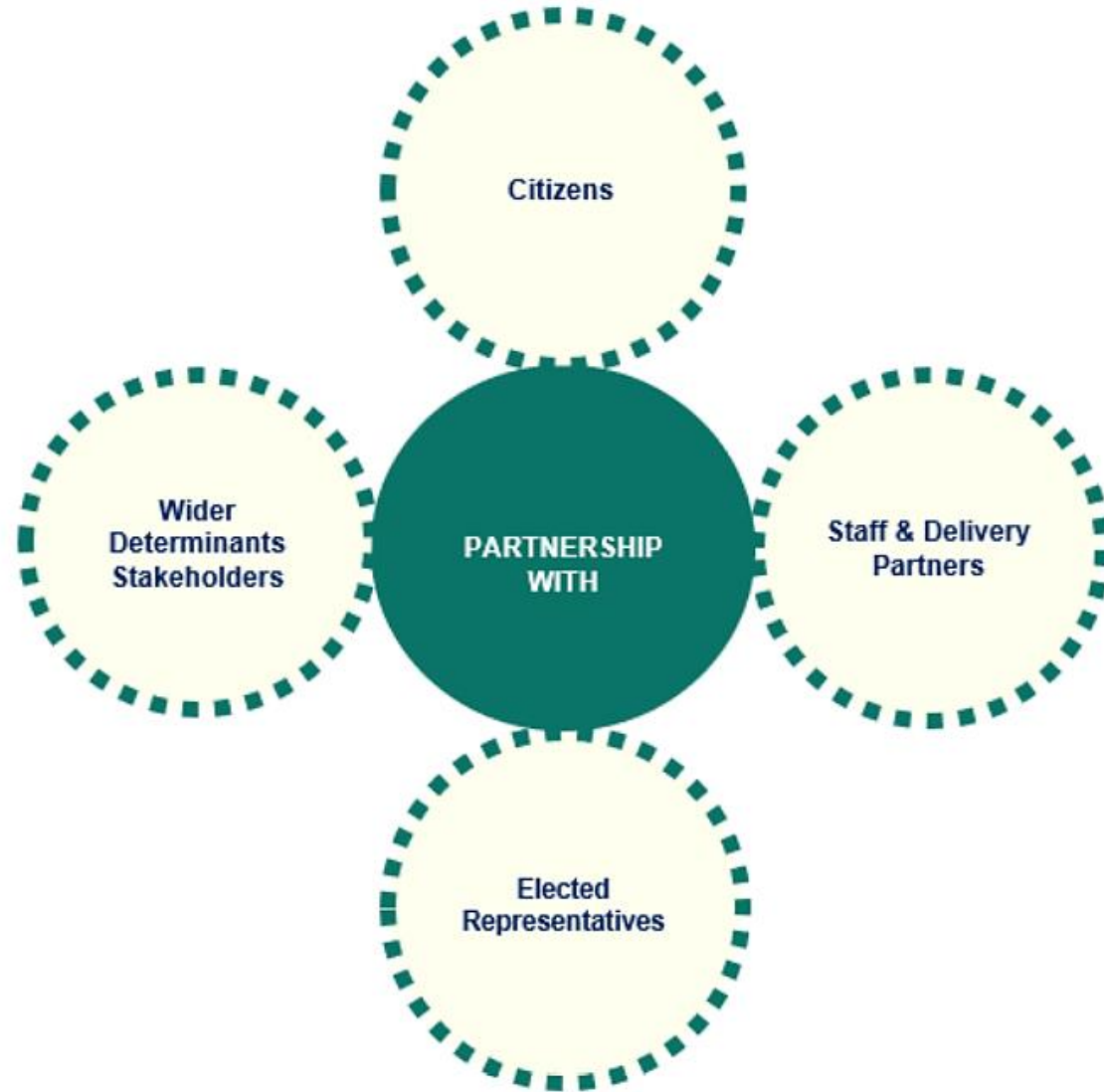
Workstream 4 Sharing Progress

Foster the support of citizens and stakeholders in the Sláintecare reform process.

In 2019, we will:

- Roll out a Citizen and Staff Engagement & Empowerment Programme
- Develop an evaluation and reporting framework for Sláintecare
- Establish a Sláintecare Integration Fund
- Launch a programme for promoting good practice so that successful projects can be recognised and scaled

We will do this in partnership.



Implementation is not easy...

Success



what people think
it looks like

Success



what it really
looks like

SLÁINTECARE PROVIDES AN OPPORTUNITY TO ENGAGE AND EMPOWER LEADERS WITHIN THE DELIVERY SYSTEM

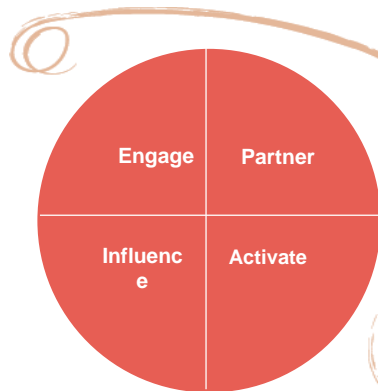


- Identify leaders – top-down, bottom up
 - Ask for their opinions and help
 - Devise guiding coalition
 - Develop shared sense of purpose
 - Devise network of champions
 - Develop enthusiasm & advocacy
- Select best practice service delivery demonstration projects
 - Devise scaling and roll-out Programme
- Develop capacity in Service Design, Lean, PM, values-in-action
 - Recognise success
 - Communicate!

OUTPUTS

- **Commitment to Implementation**
- **Active ownership and involvement of Health and Social Care Leaders**

AND AN OPPORTUNITY TO ENGAGE & EMPOWER CITIZENS



- Identify Stakeholders, potential partners, and advocates
 - Ensure clarity of understanding and agreement on implementation steps
 - Create a sense of urgency
- Engage to keep up momentum, goodwill, support and continuity
- Partner in programmes, e.g. Colleges, Government departments, HSE, media, business, the public
 - Communicate!

OUTPUTS

- **Enthusiastic buy in and advocates of Implementation Plan**
- **Wider H&W Partnership Programme signed up**
- **Key tasks agreed and commitment attained**

**Thank you for your attention
and collaboration in helping to make Sláintecare
happen.**