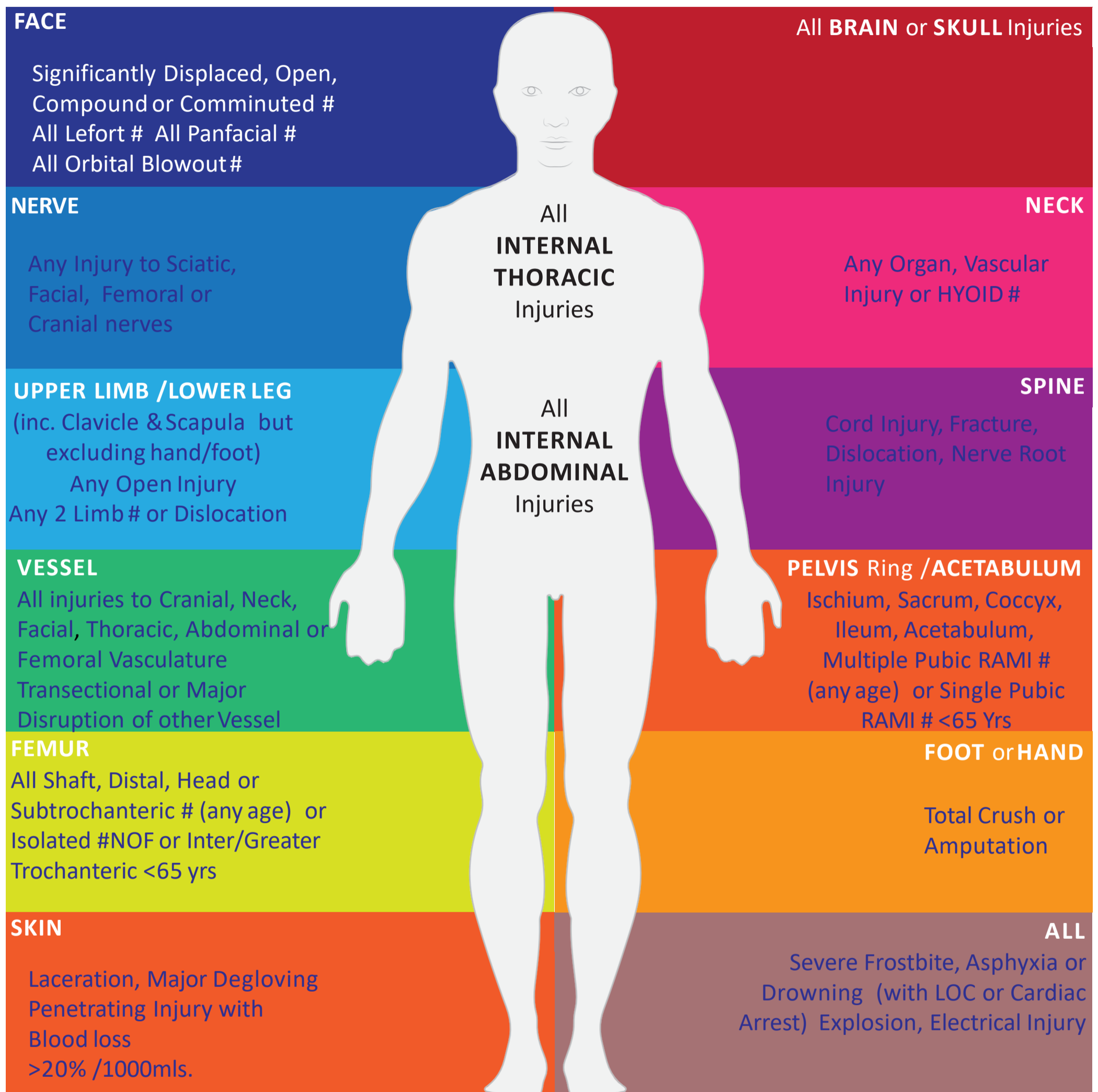


# Traumadoc criteria:

## When should I use proforma?



**MECHANISM WITH ANY OF ANATOMY/PHYSIOLOGY CRITERIA OR OTHER = ACTIVATE TRAUMA TEAM**

MECHANISM OF INJURY	PHYSIOLOGY	OTHER
MCA >60kph	RR <12 or >24 bpm	Fatality in vehicle
Motor/cyclist impact >30kph	O2 Sa <90%	Penetrating neck/chest/abdo injuries
Pedestrian impact >30kph	SBP <90mmHg	3 or more patients expected
Ejection from vehicle	HR >124 bpm	<b>PREGNANCY</b>
Prolonged extrication >30mins	GCS <9 / GCS<13 (With Head Injury)	>20/40 PROM
Explosion	<b>ANATOMY</b>	PV Bleed
Fall >8ft	Airway compromise	Foetal HR <100BPM
Major burns (>20% TBSA) / Airway burns	Flail chest	<b>PAEDIATRIC</b>
Crush injury to torso or upper thigh	Major pelvic injury	Vital signs > 1SD from normal for age
>2 Long bone fractures	Limb amputation / Pulseless limb	

**CONTACT EM CONSULTANT / REGISTRAR / NURSE IN CHARGE**