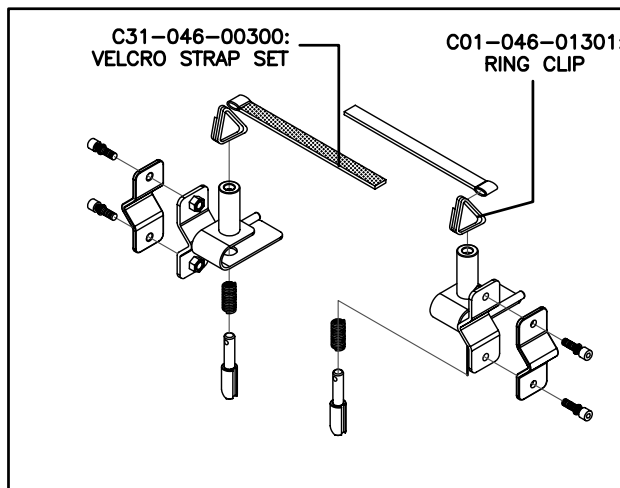
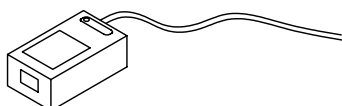


S10-046-00100:
HANDSET (COMPLETE)



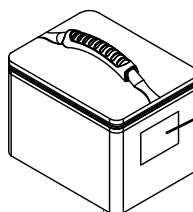
S01-046-00200:
BRACKETRY AS'Y



3D1200300000:
2A CHARGER

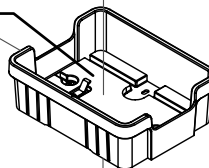
OPTIONAL EXTRAS:

- Z23014-08 EXTENDED TELESCOPIC BAR (UP TO 24" WHEELCHAIR SEAT WIDTH)
- Z10700-01 RHS PARKING BRAKE
- Z10750-01 LHS PARKING BRAKE



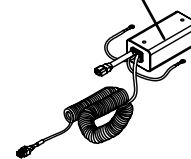
S17-046-00200:
BATTERY PACK
(INCLUDES BAG, BASE AND LEADS. DOES NOT INCLUDE BATTERIES)

S17-046-00300:
BATTERY TRAY AS'Y



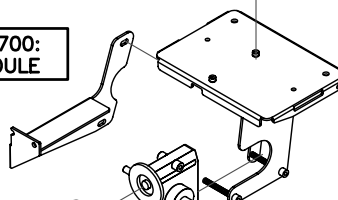
C31-046-00200:
LIFT UP STRAP

CONTROLLER
(see note below)



S01-046-00100:
TELESCOPIC BAR
(INC. 2 BARS & KNOB)

C10-046-00700:
REVERSE MODULE

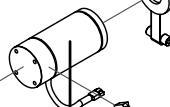


C30-001-10201:
M8 X 20 KNOB

C30-046-00300
QUICK REL. SCREW

C01-046-01500:
MOTOR HANDLE

MOTOR
(see note below)



C06-046-00100:
WHEEL C/W TYRE



C09-005-00601:
MOTOR BRUSH 7x11

C09-005-02400:
MOTOR BRUSH CAP

MOTORS AND CONTROLLERS:

- C09-046-00200: 150W MOTOR
- C09-046-00600: 200W MOTOR (HEAVY DUTY)
- C10-046-00500: CONTROLLER (NO REVERSE)
- C10-046-00502: CONTROLLER (FOR REVERSE)

REV No.	DETAILS	DATE	DRAWN
A	PARTS FOR REVERSE AND HEAVY DUTY MODELS ADDED	01/05/09	PMK

drive
MEDICAL DESIGN & MANUFACTURING

Ainley's Industrial Estate, Elland HX5 9JP
T: +44 (0) 1422 314488
E: enquiries@drivemedical.co.uk
W: www.drivemedical.co.uk/technical

TITLE:

POWERSTROLL (FROM 2008)
PARTS MANUAL

DATE: 08-07-08

SHEET No: 1 of 1

DRAWN: PMK

CHECKED:

REVISION No: A

SCALE: NTS

DWG No:

Z24099