

NEVADA

Rise & Recliner
Dual Motor

**Restwell.**

*“Stylishly
designed dual
motor chair”*



CE

The Nevada Rise & Recline Armchair features a Dual Motor mechanism allowing you to operate and move the legrest and the backrest independently. This provides countless recline options, helping you to find your most comfortable position.

www.restwellchairs.co.uk | www.drivemedical.co.uk

drive
 **DeVilbiss**
HEALTHCARE

The Nevada allows you to relax with ease at the simple touch of a button, or alternatively it will gently lift you into a standing position. The Nevada has a stylish design, is upholstered in a Rembrandt fabric and is available in four colour options as well as Anti-Microbial PVC.

Superb Comfort, Style & Performance...



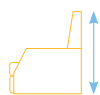
- » Available in Standard and Petite size options.
- » The footrest can be elevated and the backrest can be reclined independently.
- » It will rise and tilt, helping you to your feet.
- » Easy to use electronic hand controller.
- » Ergonomically contoured seat & back.
- » User friendly four button hand controller.
- » Provides countless recline positions.
- » Waterfall back design.
- » Reclines to an excellent snooze position.
- » Excellent quiet and smooth actions.
- » Built in convenient storage pocket.
- » Safety key function.
- » Battery back up facility included.*
- » Craftsman upholstered.
- » Weight capacity 150kg (23st).
- » Available in four Rembrandt colour options and Black AM PVC (Standard Only).

*Batteries not included.

NEVADA

CODE: CLR12 (Standard)
CLR22 (Petite)

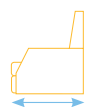
Max Weight:
150kg (23st)



Height:
110cm / 101cm



Width:
86cm / 83cm



Depth:
94cm / 90cm



Seat Depth:
54cm / 48cm

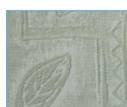


Seat Height:
48cm / 43cm



Seat Width:
51cm / 47cm

Colour Options



Green



Terracotta



Gold



Cream



Am Pvc
(Standard Only)

Leaflet Code: LL132

If you would like to view this product please contact your local stockist, details below.



Four button hand controller.



2 Independent motors.

